

----- AMP Data Entry Page -----

1. Losing Facility Information

Type of Distribution to Consolidate: Destinating **Orig & Dest** MODS/BPI Office
Facility Name & Type: Altoona PA P&DF
Street Address: 141 Patchway Road
City: Duncansville
State: PA
5D Facility ZIP Code: 16635
District: Western Pennsylvania
Area: Eastern
Finance Number: 410152
Current 3D ZIP Code(s): 166,168
Miles to Gaining Facility: 43
EXFC office: Yes
Plant Manager: Charles Burford
Senior Plant Manager: Jeffery Bergen
District Manager: Charles McCreadie
Facility Type after AMP: DDC

Approved AMP signed with
 Destinating, however it should
 have been Orig & Dest. Package
 modified 3/15/13 to show Orig &
 Dest. - HQ AMP

2. Gaining Facility Information

Facility Name & Type: Johnstown PA P&DF
Street Address: 235 Jari Drive
City: Johnstown
State: PA
5D Facility ZIP Code: 15904
District: Western Pennsylvania
Area: Eastern
Finance Number: 414080
Current 3D ZIP Code(s): 155,157,158,159
EXFC office: Yes
Plant Manager: Thomas Haynal, Jr
Senior Plant Manager: Jeffery Bergen
District Manager: Charles P McCreadie

3. Background Information

Start of Study: 9/15/2011
Date Range of Data: Jul-01-2010 : Jun-30-2011
Processing Days per Year: 310
Bargaining Unit Hours per Year: 1,745
EAS Hours per Year: 1,822
**Date of HQ memo, DAR Factors/Cost of Borrowing/
 Facility Start-up Costs Update** **New**

	June 16, 2011
Date & Time this workbook was last saved:	3/15/2013 6:35

4. Other Information

Area Vice President: Jordan Small
Vice President, Network Operations: David E. Williams
Area AMP Coordinator: Bob Roseberry
HQ AMP Coordinator: Lane Stalsberg

rev 10/10/2011

Approval Signatures

Losing Facility Name and Type: Altoona PA P&DF
Street Address: 141 Patchway Road
City: Duncansville
State: PA
Facility ZIP Code: 16635
Finance Number: 410152
Current 3D ZIP Code(s): 166168

Type of Distribution to Consolidate: ~~Destinating~~ **Orig & Dest**

Gaining Facility Name and Type: Johnstown PA P&DF
Street Address: 235 Jari Drive
City: Johnstown
State: PA
Facility ZIP Code: 15904
Finance Number: 414080
Current 3D ZIP Code(s): 155,157,158,159

ACKNOWLEDGEMENT OF ACCOUNTABILITY - I acknowledge that I am accountable for respecting and supporting the integrity of all official postal reporting systems, including financial reports and those relating to compliance with contracting, complement, or similar efforts involving the investment and expenditure of funds, as well as all systems to service to our customers.

LOSING FACILITY:

Postmaster or Plant Manager:

Charles Burford *fa.* Michael Hudak ALSR, ROOM 12-2-11
Printed Name Signature Date

Senior Plant Manager:

Jeffery Bergen [Signature]
Printed Name Signature Date

District Manager:

Charles McCreadie Charles P. McCreadie 12/02/11
Printed Name Signature Date

GAINING FACILITY:

Plant Manager:

Thomas Haynal, Jr. Th. Haynal Jr 12/19/11
Printed Name Signature Date

Senior Plant Manager:

Jeffery Bergen [Signature]
Printed Name Signature Date

District Manager:

Charles P McCreadie Charles P. McCreadie 12/02/11
Printed Name Signature Date

AREA OFFICE:

Area Vice President:

Jordan Small [Signature] 2/15/12
Printed Name Signature Date

Implementation Date: _____

HEADQUARTERS:

Approved: Disapproved:

Vice President, Network Operations:

David E Williams [Signature] 2/18/12
Printed Name Signature Date

Comments: _____

Executive Summary

Last Saved: February 17, 2012

Losing Facility Name and Type: Altoona PA P&DF

Street Address: 141 Patchway Road

City, State: Duncansville, PA

Current 3D ZIP Code(s): 166168

Type of Distribution to Consolidate: ~~Destination~~ **Orig & Dest** **Facilities to Gaining Facility:** 43

Gaining Facility Name and Type: Johnstown PA P&DF

Current 3D ZIP Code(s): 155,157,158,159

Summary of AMP Worksheets

Savings/Costs

Mail Processing Craft Workhour Savings =	<u>\$2,352,633</u>	from Workhour Costs - Proposed
Non-MP Craft/EAS + Shared LDCs Workhour Savings (less Maint/Trans) =	<u>(\$368)</u>	from Other Curr vs Prop
PCES/EAS Supervisory Workhour Savings =	<u>\$13,235</u>	from Other Curr vs Prop
Transportation Savings =	<u>(\$39,718)</u>	from Transportation (HCR and PVS)
Maintenance Savings =	<u>\$74,281</u>	from Maintenance
Space Savings =	<u>\$0</u>	from Space Evaluation and Other Costs
Total Annual Savings =	<u>\$2,400,062</u>	
Total One-Time Costs =	<u>\$207,972</u>	from Space Evaluation and Other Costs
Total First Year Savings =	<u>\$2,192,090</u>	

Staffing Positions

Craft Position Loss =	<u>13</u>	from Staffing - Craft
PCES/EAS Position Loss =	<u>(1)</u>	from Staffing - PCES/EAS

Volume

Total FHP to be Transferred (Average Daily Volume) =	<u>497,786</u>	from Workhour Costs - Current
Current FHP at Gaining Facility (Average Daily Volume) =	<u>1,036,596</u>	from Workhour Costs - Current
Losing Facility Cancellation Volume (Average Daily Volume) =	<u>135,205</u>	(= Total TPH / Operating Days)

Service

Service Standard Impacts by ADV

	UPGRADED ADV	DOWNGRADED ADV	Unchanged + Upgrades ADV	Unchanged + Upgrades %
First-Class Mail®	0	0	0	#DIV/0!
Priority Mail®	0	0	0	#DIV/0!
Package Services	0	0	0	#DIV/0!
Periodicals	N/A*	N/A*	N/A*	N/A*
Standard Mail	N/A*	N/A*	N/A*	N/A*

Code to destination 3-digit ZIP Code volume is not available

rev 10/15/2009

Summary Narrative

Last Saved: February 17, 2012

Losing Facility Name and Type: Altoona PA P&DF

Current 3D ZIP Code(s): 166168

Type of Distribution to Consolidate: ~~Destinating~~- Orig & Dest

Gaining Facility Name and Type: Johnstown PA P&DF

Current 3D ZIP Code(s): 155,157,158,159

Altoona P&DF to Johnstown P&DF AMP

BACKGROUND

The Western PA District with assist from the Eastern Area has completed this brief summary of the Altoona P&DF AMP into Johnstown study, which was conducted to determine if the Postal Service could increase efficiency by consolidating some of Altoona's mail processing operations currently being performed at the Altoona P&DF office into the Johnstown P&DF.

The Altoona P&DF is a facility with approximately 63,940 square feet of space in a single one-story building owned by the USPS. The AMP study proposes that Altoona P&DF's 385,345 outgoing (originating) collection mail pieces already scheduled to be AMP'd into Johnstown this spring and the Altoona P&DF's 330,790 destinating SCF mail be processed at the Johnstown P&DF. The Johnstown P&DF is approximately 36 miles (45 minutes) from the Altoona P&DF, and 44 miles (1 hour) from the Altoona Post Office

FINANCIAL JUSTIFICATION SUMMARY

The financial results for this relocation are:

Total Annual Savings:	\$ 2,400,213
Total First Year Savings:	\$ 2,192,241
Total One-Time Cost:	(\$207,972)

This reflects keeping the Altoona P&DF building open as a DDC and cross-dock operation for the SCF 166/168 area, while moving the Incoming Primary (SCF) operations to Johnstown.

CUSTOMER & SERVICE IMPACTS

If implemented, the consolidation will involve a shift of approximately 330,790 destinating (Incoming Primary) pieces to the Johnstown P&DF in addition to the 325,557 originating pieces already slated to go to Johnstown in the spring of 2012.

The Proposal calls for a change in AADC from Pittsburgh PA to Johnstown PA and ADC sortation from Pittsburgh PA to Johnstown PA. According to the Service Standard Impacts Destinating First Class there would be no changes to any 2 or 3 day destinations. There will be no changes to the collection box times.

Specific service standard changes associated with this Area Mail Processing consolidation are contingent upon the resolution of both (a) the rulemaking in which current market dominant product service standards in 39 CFR Part 121 are being evaluated, and (b) all remaining AMP consolidation proposals that are part of the same network rationalization initiative. A complete file reflecting any new service standards will be published at www.usps.com once all of the related AMP decisions that provide the foundation for new service standards are made. Priority and Express Mail service standards will be based upon the capability of the network.

Summary Narrative *(continued)*

RETAIL AND BUSINESS MAIL ENTRY UNIT (BMEU) IMPACTS

BMEU in Altoona will remain at the former P&DF facility. There is no retail at the P&DF so there would be no retail impact.

CFS and PARS

At this point in time both the Altoona P&DF and the Johnstown P&DF send their PARS CFS to Pittsburgh PA. There will be no changes in PARS or CFS for the Altoona P&DF.

Staffing Impacts:

As a matter of policy, the Postal Service follows the Worker Adjustment and Retraining Notification Act's ("WARN") notification requirements when the number of employees experiencing an employment loss within the meaning of WARN would trigger WARN's requirements. Some or all of the impacted employees described above may not experience an employment loss within the meaning of WARN due to transfers or reassignments.

Based on HQ Organizational Effectiveness review a Manager, Distribution Operations is proposed for Johnstown P&DF.

Management and Craft Staffing Impacts							
	Altoona PA			Johnstown PA			Net Diff
	Total Current On-Rolls	Total Proposed	Diff	Total Current On-Rolls	Total Proposed	Diff	
Craft ¹	180	121	(59)	205	259	54	(5)
Management	11	8	(3)	12	16	4	1

¹ Craft = FTR+PTR+PTF+Casuals

Mail Processing Management to Craft Ratio				
Management to Craft ² Ratios	Current		Proposed	
	SDOs to Craft ₁ (1:25 target)	MDOs+SDOs to Craft ₁ (1:22 target)	SDOs to Craft ₁ (1:25 target)	MDOs+SDOs to Craft ₁ (1:22 target)
Altoona PA	1 : 22	1 : 22	1 : 15	1 : 15
Johnstown PA	1 : 28	1 : 28	1 : 21	1 : 21

Johnstown PA

¹ Craft = FTR+PTR+PTF+Casuals

² Craft = F1 + F4 at Losing; F1 only at Gaining

Summary Narrative *(continued)*

TRANSPORTATION

Incoming:

Incoming AADC and ADC mail for the SCF 166 and SCF 168 areas will go directly to the Johnstown P&DF for any required MMP and SCF sortation. Letter mail ready for DPS will be transported to the Altoona DDC on several additional trips scheduled to run from the Johnstown P&DF to the Altoona DDC and back to meet the new operating windows. Standard SCF flat drop-shipments will be directed to the Altoona DDC to be broken down (due to space constraints in Johnstown), with 3-digit bundles dispatched throughout the operating window to the Johnstown P&DF for primary sortation on the return trips.

Outgoing:

The plan for the collection mail in the approved AMP for Outgoing mail includes the jackpotting of all collection mail into the Altoona P&DF for consolidated transport to Johnstown; with the Priority Mail continuing to get shape-sorted at the Altoona P&DF with dispatch to the Pittsburgh L&DC, and Express Mail continuing to get consolidated in Altoona with dispatch to the Pittsburgh P&DC. Trips to the Johnstown P&DF with collection mail will be added as part of the already planned Outgoing AMP, with trips from Altoona to Harrisburg and Altoona to the Pittsburgh Air Field being canceled.

Net transportation costs will be approximately \$39,718 a year.

DAR / EXPANSION OR RENOVATION

The Johnstown P&DF will need to have their workroom floor revised to accommodate the DIOSS and AFCS from Altoona, along with any necessary wiring changes, at minimal cost.

EQUIPMENT RELOCATION

1 DIOSS would be moved to Johnstown P&DF from the Altoona P&DF. The approved Outgoing AMP from Altoona to Johnstown already includes the transfer of one AFCS from Altoona to Johnstown. Total relocation costs (both Outgoing AMP and SCF AMP) will be approximately \$57,572.

SUMMARY

Transportation has been assessed and costs will be incurred to ensure service commitments and processing capabilities, as well as investment in a building expansion. Operational clearance times and effectiveness will be improved and/or maintained with the shift in all operations and volumes to the Johnstown P&DF. The study will enable the Western PA District to consolidate resources and better manage costs and functions for efficient mail processing.

24 Hour Clock

Last Saved: February 17, 2012

Losing Facility Name and Type: Altoona PA P&DF

Current 3D ZIP Code(s): 166168

Type of Distribution to Consolidate: **Destinating** **Orig & Dest**

Gaining Facility Name and Type: Johnstown PA P&DF

Current 3D ZIP Code(s): 155,157,158,159

Weekly Trends Beginning Day	24 Hour Indicator Report			80%	100%	100%	100%	Millions	100%	100%	86.9%	BPI Performance Achievement
			Facility	Cancelled by 2000 Data Source = EDW MCRS OGP Cleared by	2300 Data Source = EDW EOR	2400 Data Source = EDW EOR	MMP Cleared by 2400 Data Source = EDW EOR	MMP Volume On Hand at 2400 Data Source = EDW MCRS	Mail Assigned Commercial / FedEx By 0230 Data Source = DPS 2nd Pass Cleared by 0700 Data Source = EDW EOR	Trips On-Time 0400 - 0900 Data Source = EDW TIMES		
		%										
14-May	SAT	5/14	ALTOONA PO	73.7%	99.9%			0.2	100.0%	100.0%	94.6%	
21-May	SAT	5/21	ALTOONA PO	75.4%	100.0%			0.1	100.0%	100.0%	94.6%	
28-May	SAT	5/28	ALTOONA PO	66.8%	100.0%			0.2	100.0%	100.0%	79.7%	
4-Jun	SAT	6/4	ALTOONA PO	75.4%	100.0%			0.3	100.0%	100.0%	96.0%	
11-Jun	SAT	6/11	ALTOONA PO	72.5%	100.0%			0.2	100.0%	100.0%	94.6%	
18-Jun	SAT	6/18	ALTOONA PO	75.2%	100.0%			0.2	100.0%	100.0%	93.9%	
25-Jun	SAT	6/25	ALTOONA PO	68.3%	100.0%			0.2	100.0%	100.0%	91.2%	
2-Jul	SAT	7/2	ALTOONA PO	68.6%	100.0%			0.3	100.0%	99.1%	86.9%	
9-Jul	SAT	7/9	ALTOONA PO	72.5%	100.0%			0.1	100.0%	96.8%	69.6%	
16-Jul	SAT	7/16	ALTOONA PO	80.4%	100.0%			0.2	100.0%	100.0%	100.0%	
23-Jul	SAT	7/23	ALTOONA PO	76.0%	100.0%			0.2	100.0%	99.8%	91.2%	
30-Jul	SAT	7/30	ALTOONA PO	69.7%	100.0%			0.2	100.0%	100.0%	90.5%	
6-Aug	SAT	8/6	ALTOONA PO	28.0%	100.0%			0.1	100.0%	100.0%	96.0%	
13-Aug	SAT	8/13	ALTOONA PO	76.5%	100.0%			0.1	100.0%	100.0%	100.0%	
20-Aug	SAT	8/20	ALTOONA PO	84.9%	100.0%			0.2	100.0%	100.0%	98.6%	
27-Aug	SAT	8/27	ALTOONA PO	73.2%	100.0%			0.2	100.0%	100.0%	98.6%	
3-Sep	SAT	9/3	ALTOONA PO	77.1%	99.7%			0.2	100.0%	99.4%	96.9%	
10-Sep	SAT	9/10	ALTOONA PO	77.6%	100.0%			0.3	100.0%	100.0%	67.4%	
17-Sep	SAT	9/17	ALTOONA PO	69.9%	100.0%			0.2	100.0%	99.6%	67.4%	
24-Sep	SAT	9/24	ALTOONA PO	65.4%	100.0%			0.2	100.0%	100.0%	91.8%	
1-Oct	SAT	10/1	ALTOONA PO	69.5%	100.0%			0.2	100.0%	99.3%	78.9%	87.2%

Weekly Trends Beginning Day	24 Hour Indicator Report			80%	100%	100%	100%	Millions	100%	100%	86.9%	BPI Performance Achievement
			Facility	Cancelled by 2000 Data Source = EDW MCRS OGP Cleared by	2300 Data Source = EDW EOR	2400 Data Source = EDW EOR	MMP Cleared by 2400 Data Source = EDW EOR	MMP Volume On Hand at 2400 Data Source = EDW MCRS	Mail Assigned Commercial / FedEx By 0230 Data Source = DPS 2nd Pass Cleared by 0700 Data Source = EDW EOR	Trips On-Time 0400 - 0900 Data Source = EDW TIMES		
		%										
14-May	SAT	5/14	JOHNSTOWN PO	73.4%	97.8%		100.0%	#VALUE!	100.0%	99.7%	97.3%	
21-May	SAT	5/21	JOHNSTOWN PO	73.8%	91.8%		100.0%	#VALUE!	100.0%	100.0%	100.0%	
28-May	SAT	5/28	JOHNSTOWN PO	75.2%	98.5%		100.0%	#VALUE!	100.0%	99.9%	91.3%	
4-Jun	SAT	6/4	JOHNSTOWN PO	72.1%	98.4%		100.0%	#VALUE!	100.0%	100.0%	95.5%	
11-Jun	SAT	6/11	JOHNSTOWN PO	78.7%	98.1%		100.0%	#VALUE!	100.0%	100.0%	100.0%	
18-Jun	SAT	6/18	JOHNSTOWN PO	74.4%	99.4%		100.0%	#VALUE!	100.0%	99.6%	89.1%	
25-Jun	SAT	6/25	JOHNSTOWN PO	79.6%	93.0%		100.0%	#VALUE!	100.0%	99.8%	97.3%	
2-Jul	SAT	7/2	JOHNSTOWN PO	64.9%	96.8%		100.0%	#VALUE!	100.0%	99.6%	80.4%	
9-Jul	SAT	7/9	JOHNSTOWN PO	76.6%	100.0%		100.0%	#VALUE!	100.0%	99.7%	91.8%	
16-Jul	SAT	7/16	JOHNSTOWN PO	74.1%	99.5%		100.0%	#VALUE!	100.0%	99.9%	94.6%	
23-Jul	SAT	7/23	JOHNSTOWN PO	63.9%	98.1%		100.0%	#VALUE!	100.0%	100.0%	99.1%	
30-Jul	SAT	7/30	JOHNSTOWN PO	75.3%	100.0%		100.0%	#VALUE!	100.0%	100.0%	100.0%	
6-Aug	SAT	8/6	JOHNSTOWN PO	80.8%	100.0%		100.0%	#VALUE!	100.0%	100.0%	99.1%	
13-Aug	SAT	8/13	JOHNSTOWN PO	69.2%	94.1%		100.0%	#VALUE!	100.0%	100.0%	99.1%	
20-Aug	SAT	8/20	JOHNSTOWN PO	79.6%	98.9%		100.0%	#VALUE!	100.0%	100.0%	93.6%	
27-Aug	SAT	8/27	JOHNSTOWN PO	82.7%	98.7%		100.0%	#VALUE!	100.0%	99.1%	85.5%	
3-Sep	SAT	9/3	JOHNSTOWN PO	70.6%	98.9%		100.0%	#VALUE!	100.0%	98.4%	82.6%	
10-Sep	SAT	9/10	JOHNSTOWN PO	78.8%	98.6%		100.0%	#VALUE!	100.0%	99.8%	88.2%	
17-Sep	SAT	9/17	JOHNSTOWN PO	83.4%	100.0%		100.0%	#VALUE!	100.0%	100.0%	99.1%	
24-Sep	SAT	9/24	JOHNSTOWN PO	80.6%	95.8%		100.0%	#VALUE!	100.0%	100.0%	93.6%	
1-Oct	SAT	10/1	JOHNSTOWN PO	78.8%	99.0%	100.0%	100.0%	#VALUE!	100.0%	99.8%	88.2%	93.7%

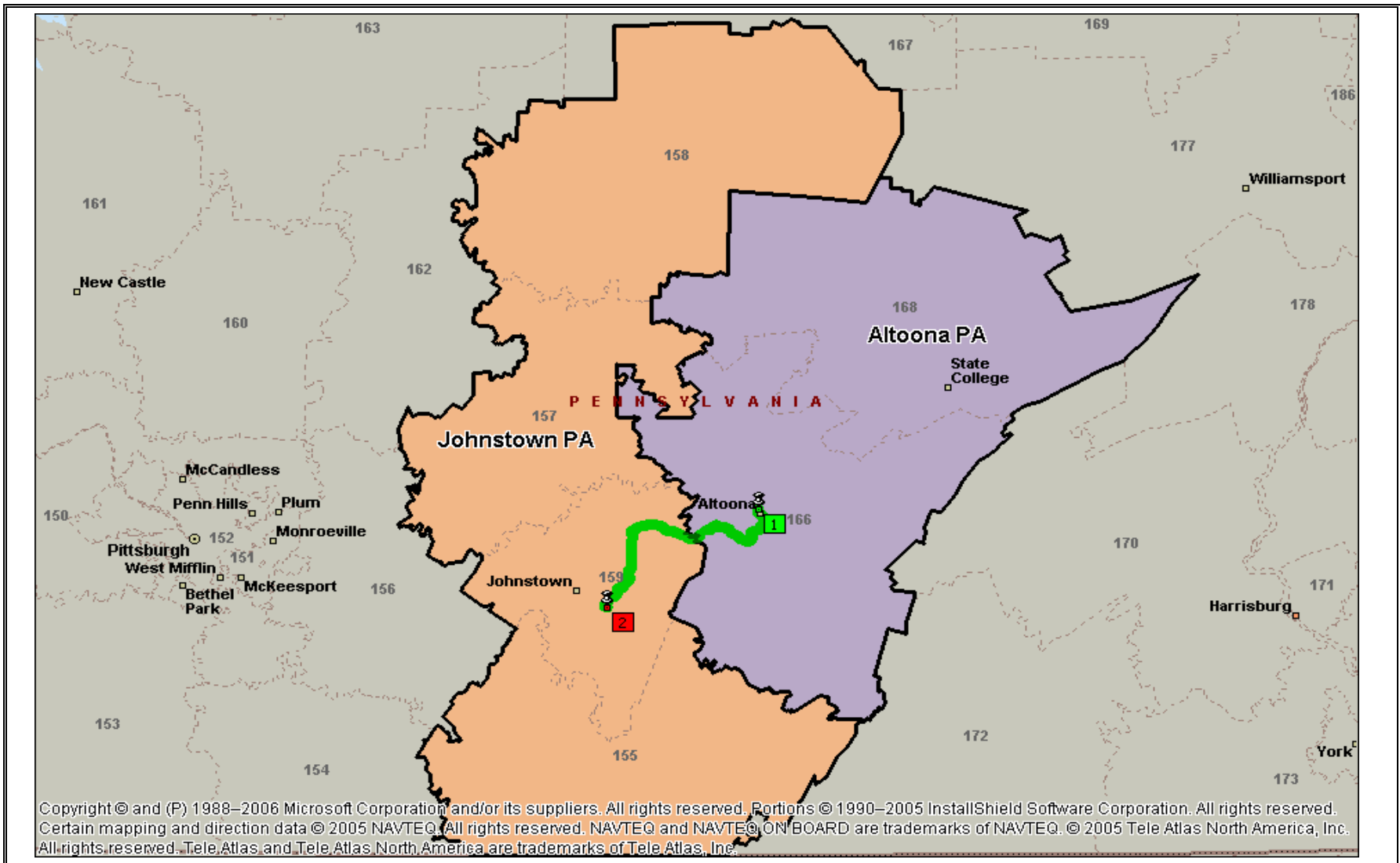
rev 04/2/2008

MAP

Last Saved: February 17, 2012

Losing Facility Name and Type: Altoona PA P&DF
Current 3D ZIP Code(s): 166168
Miles to Gaining Facility: 43

Gaining Facility Name and Type: Johnstown PA P&DF
Current 3D ZIP Code(s): 155,157,158,159



rev 03/20/2008

Service Standard Impacts

Last Saved: February 17, 2012

Losing Facility: Altoona PA P&DF

Losing Facility 3D ZIP Code(s): 166168

Gaining Facility 3D ZIP Code(s): 155,157,158,159

Based on report prepared by Network Integration Support dated: mm/dd/yyyy

Service Standard Changes - Average Daily Volume (data obtained from ODIS is derived from sampling and may vary from actual volume)																
	FCM						PRI		PER *		STD *		PSVC		ALL CLASSES	
	Overnight	% Change	All Others	% Change	Total	% Change	All	% Change	All	% Change	All	% Change	All	% Change	All	% Change
UPGRADE																
DOWNGRADE																
TOTAL																
NET UP+NO CHNG																
VOLUME TOTAL																

* - Periodical and Standard mail origin 3-digit ZIP Code to destination 3-digit ZIP Code volume is not available

Selected summary fields are transferred to the *Executive Summary*

Service Standard Changes - Pairs																
	FCM						PRI		PER		STD		PSVC		ALL CLASSES	
	Overnight	% Change	All Others	% Change	Total	% Change	All	% Change	All	% Change	All	% Change	All	% Change	All	% Change
UPGRADE																
DOWNGRADE																
TOTAL																
NET																

TBD.

Stakeholders Notification

(WorkBook Tab Notification - 1)

Last Saved: February 17, 2012

Stakeholder Notification Page 1

Losing Facility: Altoona PA P&DF

AMP Event: Start of Study

Workhour Costs - Current

Last Saved: February 17, 2012

Losing Facility: Altoona PA P&DF

Gaining Facility: Johnstown PA P&DF

Date Range of Data 07/01/10 <<=== ==>> 06/30/11

Losing Current Workhour Rate by LDC			
LDC	Function 1	LDC	Function 4
11	\$40.50	41	\$0.00
12	\$53.12	42	\$34.63
13	\$0.00	43	\$44.72
14	\$46.69	44	\$45.76
15	\$33.86	45	\$36.75
16	\$0.00	46	\$0.00
17	\$42.23	47	\$0.00
18	\$41.55	48	\$36.87

Gaining Current Workhour Rate by LDC			
LDC	Function 1	LDC	Function 4
11	\$37.39	41	\$0.00
12	\$33.89	42	\$37.03
13	\$36.47	43	\$49.04
14	\$43.33	44	\$35.93
15	\$0.00	45	\$39.13
16	\$0.00	46	\$0.00
17	\$41.33	47	\$0.00
18	\$38.50	48	\$38.60

(1) Current Operation Numbers	(2) % Moved to Gaining	(3) Current Annual FHP Volume	(4) Current Annual TPH or NATPH Volume	(5) Current Annual Workhours	(6) Current Productivity (TPH or NATPH)	(7) Current Annual Workhour Costs
002	100.0%					\$2,779
009	100.0%					\$11,231
010	100.0%					\$38,980
011	100.0%					\$190
012	100.0%					\$38,483
015	100.0%					\$73,517
017	100.0%					\$79,202
020	100.0%					\$11,286
021	50.0%					\$49,176
022	50.0%					\$2,541
030	100.0%					\$112,113
040	100.0%					\$3,630
044	100.0%					\$126,439
060	100.0%					\$48,475
066	100.0%					\$7,231
067	100.0%					\$1,643
074	100.0%					\$87,592
079	100.0%					\$76,457
100	100.0%					\$6,415
110	40.0%					\$120,099
114	100.0%					\$67,957
120	100.0%					\$41,881
122	100.0%					\$235,748
124	100.0%					\$29,363
126	25.0%					\$85,537
127	25.0%					\$258,248
130	100.0%					\$261
141	100.0%					\$24,961
144	100.0%					\$45,249
180	70.0%					\$99,483
210	25.0%					\$439,251
229	25.0%					\$131,655
261	100.0%					\$153
264	100.0%					\$6,699
271	100.0%					\$79,732
281	100.0%					\$109,824
441	100.0%					\$3,595
442	100.0%					\$0
444	100.0%					\$17,576
446	20.0%					\$0

(8) Current Operation Numbers	(9) % Moved to Losing	(10) Current Annual FHP Volume	(11) Current Annual TPH or NATPH Volume	(12) Current Annual Workhours	(13) Current Productivity (TPH or NATPH)	(14) Current Annual Workhour Costs
002						\$245,502
009						\$0
010						\$127,020
015						\$133,583
012						\$0
015dup						\$0
017						\$0
020						\$0
021						\$0
022						\$271
030						\$135,086
040						\$78,798
044						\$215,137
060						\$2,603
066						\$0
067						\$0
074						\$81,999
079						\$98,846
100						\$76,671
110						\$9,847
114						\$0
120						\$94,785
122						\$0
124						\$0
126						\$2,560
127						\$284,536
130						\$0
141						\$0
144						\$0
180						\$38,891
210						\$36,905
229						\$14,917
261						\$0
264						\$0
271						\$117,639
281						\$82,110
060dup						
060dup						
074dup						
074dup						

Workhour Costs - Proposed

Last Saved: February 17, 2012

Losing Facility: Altoona PA P&DF

Gaining Facility: Johnstown PA P&DF

(1) Proposed Operation Numbers	(2) Proposed Annual FHP Volume	(3) Proposed Annual TPH or NATPH Volume	(4) Proposed Annual Workhours	(5) Proposed Productivity (TPH or NATPH)	(6) Proposed Annual Workhour Costs
002					\$0
009					\$0
010					\$0
011					\$0
012					\$0
015					\$0
017					\$0
020					\$0
021					\$24,588
022					\$1,270
030					\$0
040					\$0
044					\$0
060					\$0
066					\$0
067					\$0
074					\$0
079					\$0
100					\$0
110					\$72,059
114					\$0
120					\$0
122					\$0
124					\$0
126					\$64,153
127					\$193,686
130					\$0
141					\$0
144					\$0
180					\$29,845
210					\$329,438
229					\$98,741
261					\$0
264					\$0
271					\$0
281					\$0
441					\$0
442					\$0
444					\$0
446					\$0
481					\$0
776					\$0
798					\$0
811					\$0
812					\$0
814					\$0
891					\$0
893					\$0
894					\$0

(7) Proposed Operation Numbers	(8) Proposed Annual FHP Volume	(9) Proposed Annual TPH or NATPH Volume	(10) Proposed Annual Workhours	(11) Proposed Productivity (TPH or NATPH)	(12) Proposed Annual Workhour Costs
002					\$248,221
009					\$10,989
010					\$165,161
015					\$222,236
012					\$37,656
015dup					\$0
017					\$77,499
020					\$11,044
021					\$24,059
022					\$1,514
030					\$234,665
040					\$81,278
044					\$326,812
060					\$49,953
066					\$1,755
067					\$2,880
074					\$169,276
079					\$0
100					\$81,680
110					\$56,853
114					\$61,185
120					\$135,765
122					\$230,678
124					\$28,732
126					\$23,485
127					\$347,710
130					\$235
141					\$9,207
144					\$23,530
180					\$107,032
210					\$144,356
229					\$47,123
261					\$3,554
264					\$5,928
271					\$178,083
281					\$316,438
060dup					\$0
060dup					\$0
074dup					\$0
074dup					\$0
481					\$124,350
481dup					\$0
798					\$4,687
331					\$92,336
331dup					\$0
334					\$22,038
891					\$181,295
893					\$6,770
894					\$322,673

Other Workhour Move Analysis

Last Saved: February 17, 2012

Losing Facility: Altoona PA P&DF

Gaining Facility: Johnstown PA P&DF

Date Range of Data: 07/01/10 to #REF!

Current Other Craft Workhours

Losing Facility					Gaining Facility				
Current MODS Operation Number	Percent Moved to Gaining (%)	Reduction Due to EoS (%)	Current Annual Workhours	Current Annual Workhour Cost (\$)	Current MODS Operation Number	Percent Moved to Losing (%)	Reduction Due to EoS (%)	Current Annual Workhours	Current Annual Workhour Cost (\$)
668	30.0%			\$164,405	668				\$186,564
745	0.0%	47.1%		\$153,083	745				\$144,148
750	0.0%	10.1%		\$872,974	750				\$1,013,054
228				\$7,180	228				\$38,519
354				\$3,122	354				\$9,165
544				\$148,484	544				\$71,131
550				\$67,597	550				\$66,013
558				\$31,776	558				\$946
568				\$133,369	568				\$197,159
591				\$34,164	591				\$76,490
613				\$11,303	613				\$13,766
632				\$3,418	632				\$3,133
660				\$65,219	660				\$23,516
665				\$78,170	665				\$72,821
709				\$20	709				\$368
722				\$444	722				\$2,068,101
727				\$3,533,035	727				\$0
728				\$1,523,395	728				\$860
731				\$77,702	731				\$67,995
732				\$137	732				\$0
733				\$32,746	733				\$17,526
735				\$40	735				\$2,957
739				\$130	739				\$0
742				\$76,236	742				\$90,797
743				\$4,540	743				\$290
747				\$560,535	747				\$550,926
753				\$150,629	753				\$340,229
756				\$4,383	756				\$39,238
					353				\$3,345
					355				\$160,911
					515				\$356
					569				\$279
					608				\$100
					621				\$25
					622				\$117
					631				\$322
					658				\$163
					721				\$4,451,583
					724				\$1,029
					737				\$97
					746				\$240
					749				\$48
					761				\$259
					762				\$123
					763				\$118
					768				\$563

Proposed Other Craft Workhours

Losing Facility			Gaining Facility		
Proposed MODS Operation Number	Proposed Annual Workhours	Proposed Annual Workhour Cost (\$)	Proposed MODS Operation Number	Proposed Annual Workhours	Proposed Annual Workhour Cost (\$)
668		\$115,083	668		\$236,223
745		\$80,981	745		\$144,148
750		\$784,785	750		\$1,013,054
228		\$7,180	228		\$38,519
354		\$3,122	354		\$9,165
544		\$148,484	544		\$71,131
550		\$67,597	550		\$66,013
558		\$31,776	558		\$946
568		\$133,369	568		\$197,159
591		\$34,164	591		\$76,490
613		\$11,303	613		\$13,766
632		\$3,418	632		\$3,133
660		\$65,219	660		\$23,516
665		\$78,170	665		\$72,821
709		\$20	709		\$368
722		\$444	722		\$2,068,101
727		\$3,533,035	727		\$0
728		\$1,523,395	728		\$860
731		\$77,702	731		\$67,995
732		\$137	732		\$0
733		\$32,746	733		\$17,526
735		\$40	735		\$2,957
739		\$130	739		\$0
742		\$76,236	742		\$90,797
743		\$4,540	743		\$290
747		\$560,535	747		\$550,926
753		\$150,629	753		\$340,229
756		\$4,383	756		\$39,238
			353		\$3,345
			355		\$160,911
			515		\$356
			569		\$279
			608		\$100
			621		\$25
			622		\$117
			631		\$322
			658		\$163
			721		\$4,451,583
			724		\$1,029
			737		\$97
			746		\$240
			749		\$48
			761		\$259
			762		\$123
			763		\$118
			768		\$563

Staffing - Management

Last Saved: February 17, 2012

Losing Facility: Altoona PA P&DF

Data Extraction Date: 11/02/11

Finance Number: 410152

Management Positions						
Line	(1) Position Title	(2) Level	(3) Current Auth Staffing	(4) Current On-Rolls	(5) Proposed Staffing	(6) Difference
1	POSTMASTER (F)	EAS-24	1	1	1	0
2	MGR MAIL PROCESSING OPERATIONS	EAS-19	1	1	0	-1
3	MGR MAINTENANCE	EAS-18	1	1	1	0
4	OPERATIONS SUPPORT SPECIALIST	EAS-17	1	1	0	-1
5	SUPV CUSTOMER SERVICES	EAS-17	3	3	3	0
6	SUPV DISTRIBUTION OPERATIONS	EAS-17	4	4	2	-2
7	Supervisor Maintenance Operations		0	0	1	1
8						
9						
10						
11						
12						
13						
14						
15						
16						
17						
18						
19						
20						
21						
22						
23						
24						
25						
26						
27						
28						
29						
30						
31						
32						
33						
34						
35						
36						
37						
38						
39						
40						
41						
42						
43						

44						
45						
46						
47						
48						
49						
50						
51						
52						
53						
54						
55						
56						
57						
58						
59						
60						
61						
62						
63						
64						
65						
66						
67						
68						
69						
70						
71						
72						
73						
74						
75						
76						
77						
78						
79						
	Totals		11	11	8	(3)

Retirement Eligibles: 3

Position Loss: 3

Management Positions						
Line	(12) Position Title	(13) Level	(14) Current Auth Staffing	(15) Current On-Rolls	(16) Proposed Staffing	(17) Difference
1	POSTMASTER (F)	EAS-24	1	1	1	0
2	MGR MAIL PROCESSING OPERATIONS	EAS-21	1	1	1	0
3	MGR MAINTENANCE	EAS-18	1	1	1	0
4	OPERATIONS SUPPORT SPECIALIST	EAS-17	2	1	2	1
5	SUPV CUSTOMER SERVICES	EAS-17	4	4	4	0
6	SUPV DISTRIBUTION OPERATIONS	EAS-17	4	3	6	3
7	SUPV MAINTENANCE OPERATIONS	EAS-17	1	1	1	0
8						
9						
10						
11						
12						
13						
14						
15						
16						
17						
18						
19						
20						
21						
22						
23						
24						
25						
26						
27						
28						
29						
30						
31						
32						
33						
34						
35						
36						
37						
38						
39						
40						
41						
42						
43						
44						
45						
46						

47						
48						
49						
50						
51						
52						
53						
54						
55						
56						
57						
58						
59						
60						
61						
62						
63						
64						
65						
66						
67						
68						
69						
70						
71						
72						
73						
74						
75						
76						
77						
78						
79						
	Total		14	12	16	4

Retirement Eligibles: 1

Position Loss: **(4)**

Total PCES/EAS Position Loss: **(1)** (This number carried forward to the *Executive Summary*)

rev 11/05/2008

Staffing - Craft

Last Saved: February 17, 2012

Losing Facility: Altoona PA P&DF

Finance Number: 410152

Data Extraction Date: 11/02/11

Craft Positions	(1) Casuals/PSEs On-Rolls	(2) Part Time On-Rolls	(3) Full Time On-Rolls	(4) Total On-Rolls	(5) Total Proposed	(6) Difference
Function 1 - Clerk	5	0	47	52	17	(35)
Function 4 - Clerk	0	0	9	9	9	0
Function 1 - Mail Handler	2	0	26	28	4	(24)
Function 4 - Mail Handler	0	0	0			
Function 1 & 4 Sub-Total	7	0	82	89	30	(59)
Function 3A - Vehicle Service	0	0	0			
Function 3B - Maintenance	0	0	22	22	22	0
Functions 67-69 - Lmtd/Rehab/WC		0	0			
Other Functions	0	6	63	69	69	0
Total	7	6	167	180	121	(59)

Retirement Eligibles: 49

Gaining Facility: Johnstown PA P&DF

Finance Number: 414080

Data Extraction Date: 11/02/11

Craft Positions	(7) Casuals/PSEs On-Rolls	(8) Part Time On-Rolls	(9) Full Time On-Rolls	(10) Total On-Rolls	(11) Total Proposed	(12) Difference
Function 1 - Clerk	8	0	56	64	96	32
Function 1 - Mail Handler	3	2	14	19	21	2
Function 1 Sub-Total	11	2	70	83	125	34
Function 3A - Vehicle Service	0	0	0			
Function 3B - Maintenance	3	0	23	26	38	12
Functions 67-69 - Lmtd/Rehab/WC		0	1	1	1	0
Other Functions	0	6	89	95	95	0
Total	14	8	183	205	259	46

Retirement Eligibles: 62

Total Craft Position Loss: 13 (This number carried forward to the *Executive Summary*)

(13) Notes: _____

rev 11/05/2008

Maintenance

Last Saved: February 17, 2012

Losing Facility: Altoona PA P&DF

Gaining Facility: Johnstown PA P&DF

Date Range of Data: Jul-01-2010 : Jun-30-2011

	(1) Current Cost	(2) Proposed Cost	(3) Difference
Workhour Activity			
LDC 36 Mail Processing Equipment	\$ 872,974	\$ 784,785	\$ (88,188)
LDC 37 Building Equipment	\$ 150,629	\$ 150,629	\$ 0
LDC 38 Building Services <i>(Custodial Cleaning)</i>	\$ 560,535	\$ 560,535	\$ 0
LDC 39 Maintenance Operations Support	\$ 153,083	\$ 80,981	\$ (72,102)
LDC 93 Maintenance Training	\$ 28,751	\$ 24,438	\$ (4,313)
Workhour Cost Subtotal	\$ 1,765,972	\$ 1,601,369	\$ (164,603)
Other Related Maintenance & Facility Costs			
Total Maintenance Parts, Supplies & Facility Utilities	\$ 496,285	\$ 416,685	\$ (79,600)
Adjustments <i>(from "Other Curr vs Prop" tab)</i>	\$ 0		
Grand Total	\$ 2,262,257	\$ 2,018,054	\$ (244,203)

	(4) Current Cost	(5) Proposed Cost	(6) Difference
Workhour Activity			
LDC 36 Mail Processing Equipment	\$ 1,013,054	\$ 1,013,054	\$ 0
LDC 37 Building Equipment	\$ 340,229	\$ 340,229	\$ 0
LDC 38 Building Services <i>(Custodial Cleaning)</i>	\$ 550,974	\$ 550,974	\$ 0
LDC 39 Maintenance Operations Support	\$ 144,387	\$ 144,387	\$ 0
LDC 93 Maintenance Training	\$ 740	\$ 2,265	\$ 1,525
Workhour Cost Subtotal	\$ 2,049,384	\$ 2,050,909	\$ 1,525
Other Related Maintenance & Facility Costs			
Total Maintenance Parts, Supplies & Facility Utilities	\$ 448,959	\$ 496,959	\$ 48,000
Adjustments <i>(from "Other Curr vs Prop" tab)</i>		\$ 120,397	
Grand Total	\$ 2,498,343	\$ 2,668,265	\$ 169,921

Annual Maintenance Savings: **\$74,281** (This number carried forward to the Executive Summary)

(7) Notes: Losing facility remains staffing (6)LDC 36 Electronics Techs, (2) LDC 37 Maintenance Mechanics (6) custodians, 1 MOS Clerk. Gaining facility required additional staffing (3) LDC 36 Electronic Techs, (1) LDC 36 MPE. Gaining facility additional training \$20,000 (not included in proposed costs) . Johnstown will have 3 AFCSS, 5 DBCSS, 3 DIOSS, 1 AFSM100; keeping Altoona as an annex with 1 AFSM100, 1 Merlin and 4 DBCSS.

rev 04/13/2009

Transportation - PVS
Last Saved: February 17, 2012

Losing Facility: Altoona PA P&DF
Finance Number: 410152
Date Range of Data: 07/01/10 -- to -- 06/30/11

Gaining Facility: Johnstown PA P&DF
Finance Number: 414080

	(1) Current	(2) Proposed	(3) Difference
PVS Owned Equipment			
Seven Ton Trucks			0
Eleven Ton Trucks			0
Single Axle Tractors			0
Tandem Axle Tractors			0
Spotters			0
PVS Transportation			
Total Number of Schedules			0
Total Annual Mileage			0
Total Mileage Costs			\$0
PVS Leases			
Total Vehicles Leased			0
Total Lease Costs			\$0
PVS Workhour Costs			
LDC 31 (617, 679, 764)	\$0	\$0	\$0
LDC 34 (765, 766)	\$0	\$0	\$0
Adjustments (from "Other Curr vs Prop" tab)		\$0	
Total Workhour Costs	\$0	\$0	\$0

	(4) Current	(5) Proposed	(6) Difference
PVS Owned Equipment			
Seven Ton Trucks			0
Eleven Ton Trucks			0
Single Axle Tractors			0
Tandem Axle Tractors			0
Spotters			0
PVS Transportation			
Total Number of Schedules			0
Total Annual Mileage			0
Total Mileage Costs			\$0
PVS Leases			
Total Vehicles Leased			0
Total Lease Costs			\$0
PVS Workhour Costs			
LDC 31 (617, 679, 764)	\$0	\$0	\$0
LDC 34 (765, 766)	\$0	\$0	\$0
Adjustments (from "Other Curr vs Prop" tab)		\$0	
Total Workhour Costs	\$0	\$0	\$0

PVS Transportation Savings (Losing Facility):

PVS Transportation Savings (Gaining Facility):

Total PVS Transportation Savings: <<<< (This number is summed with Total from 'Trans-HCR' and carried forward to the Executive Summary as Transportation Savings)

(7) Notes: _____

MPE Inventory

Last Saved: February 17, 2012

Lossing Facility: Altoona PA P&DF

Gaining Facility: Johnstown PA P&DF

Data Extraction Date: 09/20/11

Equipment Type	(1) Current Number	(2) Proposed Number	(3) Difference
AFCS	2	0	(2)
AFCS200	0	0	0
AFSM - ALL	1	1	0
APPS	0	0	0
CIOSS	0	0	0
CSBCS	0	0	0
DBCS	6	4	(2)
DBCS-OSS	0	0	0
DIOSS	1	0	(1)
FSS	0	0	0
SPBS	0	0	0
UFSM	0	0	0
FC / MICRO MARK	0	0	0
ROBOT GANTRY	0	0	0
HSTS / HSUS	0	0	0
LCTS / LCUS	0	0	0
LIPS	0	0	0
MPBCS-OSS	0	0	0
TABBER	0	0	0
PIV	0	0	0
LCREM	0	0	0

Equipment Type	(4) Current Number	(5) Proposed Number	(6) Difference	(7) Equipment Change	(8) Relocation Costs
AFCS	2	3	1	(1)	\$30,000
AFCS200	0	0	0	0	
AFSM - ALL	1	1	0	0	
APPS	0	0	0	0	
CIOSS	0	0	0	0	
CSBCS	0	0	0	0	
DBCS	7	5	(2)	3	\$20,679
DBCS-OSS	0	0	0	1	
DIOSS	1	3	2	1	\$6,893
FSS	0	0	0	0	
SPBS	0	0	0	0	
UFSM	0	0	0	0	
FC / MICRO MARK	0	0	0	0	
ROBOT GANTRY	0	0	0	0	
HSTS / HSUS	0	0	0	0	
LCTS / LCUS	0	0	0	0	
LIPS	0	0	0	0	
MPBCS-OSS	0	0	0	0	
TABBER	0	0	0	0	
PIV	0	0	0	0	
LCREM	0	1	1	1	

Mail Processing Equipment Relocation Costs from Losing to Gaining Facility: \$57,572 (This number is carried forward to *Space Evaluation and Other Costs*)

(9) Notes: The equipment set is for retaining Altoona PDF as an Annex

rev 03/04/2008

Customer Service Issues

Last Saved: February 17, 2012

Losing Facility: Altoona PA P&DF

5-Digit ZIP Code: 16635

Data Extraction Date: 10/18/11

1. Collection Points

Number picked up before 1 p.m.
 Number picked up between 1-5 p.m.
 Number picked up after 5 p.m.
 Total Number of Collection Points

3-Digit ZIP Code: 166		3-Digit ZIP Coc 168		3-Digit ZIP Code:		3-Digit ZIP Code:	
Current		Current		Current		Current	
Mon. - Fri.	Sat.	Mon. - Fri.	Sat.	Mon. - Fri.	Sat.	Mon. - Fri.	Sat.
78	191	30	132				
159	60	131	44				
18	4	25	7				
255	255	186	183	0	0	0	0

2. How many collection boxes are designated for "local delivery"?

3. How many "local delivery" boxes will be removed as a result of AMP?

4. Delivery Performance Report

% Carriers returning before 5 p.m.

Quarter/FY	Percent
QTR 3 FY11	99.0%
QTR 2 FY11	99.1%
QTR 1 FY11	98.4%
QTR 4 FY10	99.4%

5. Retail Unit Inside Losing Facility (Window Service Times)

	Current		Proposed	
	Start	End	Start	End
Monday				
Tuesday				
Wednesday				
Thursday				
Friday				
Saturday				

6. Business (Bulk) Mail Acceptance Hours

	Current		Proposed	
	Start	End	Start	End
Monday	9:00	16:30	9:00	16:30
Tuesday	9:00	16:30	9:00	16:30
Wednesday	9:00	16:30	9:00	16:30
Thursday	9:00	16:30	9:00	16:30
Friday	9:00	16:30	9:00	16:30
Saturday				

7. Can customers obtain a local postmark in accordance with applicable policies in the *Postal Operations Manual*? _____

8. Notes: _____

Gaining Facility: Johnstown PA P&DF

9. What postmark will be printed on collection mail?

Line 1 Johnstown 159

Line 2 Date and Time

rev 6/18/2008

Space Evaluation and Other Costs

Last Saved: February 17, 2012

Lossing Facility: Altoona PA P&DF

Space Evaluation

1. Affected Facility

Facility Name: Altoona PA P&DF
 Street Address: 141 Patchway Road
 City, State ZIP: Duncansville PA 16635

2. Lease Information. (If not leased skip to 3 below.) Owned

Enter annual lease cost _____
 Enter lease expiration date _____
 Enter lease options/terms _____

3. Current Square Footage

Enter the total interior square footage of the facility: 63,940
 Enter gained square footage expected with the AMF: 11,998

4. Planned use for acquired space from approved AMI

The Altoona site will be surveyed for Customer Service layout opps. Eastern FSO will see about off
The Altoona P&DC manual operations now use 15,012 sq.ft. The avg. quantity of equipment use
64 APCs, 12 BMCs, 20 hampers, 10 pallets, 36 racks, 8 trucks 25 u-carts, 4 wires, 10 letter cases, 11 flats,
trucks, 25 u-carts, 4 wires, 10 letter cases, 11 flats cases & 3 tray carts, Elim. Of AFSC, 3 DBCSS &

5. Facility Costs

Enter any projected one-time facility costs: \$150,400
 (This number shown below under One-Time Costs section.)

6. Savings Information

Space Savings (\$): _____
 (This number carried forward to the Executive Summary)

7. Notes (1) AFCS w/VFS \$30,000, (2) DIOSS \$15,400, BDS \$5,000, Barney Mod \$100,000

One-Time Costs

Employee Relocation Costs: _____

Mail Processing Equipment Relocation Costs: \$57,572
 (from MPE Inventory)

Facility Costs: \$150,400
 (from above)

Total One-Time Costs: \$207,972
 (This number carried forward to Executive Summary)

Remote Encoding Center Cost per 1000

Lossing Facility: Altoona PA P&DF

Gaining Facility: Johnstown PA P&DF

YTD Range of Report: 07/01/10 : 06/30/11

(1) Product	(2) Associated REC	(3) Current Cost per 1,000 Images
Letters	WICHITA	\$34.66
Flats	WICHITA	\$32.43
PARS COA	WICHITA	\$157.52
PARS Redirects	WICHITA	\$40.21
APPS	WICHITA	\$30.91

(4) Product	(5) Associated REC	(6) Current Cost per 1,000 Images
Letters	WICHITA	\$34.66
Flats	WICHITA	\$32.43
PARS COA	WICHITA	\$157.52
PARS Redirects	WICHITA	\$40.21
APPS	WICHITA	\$30.91

rev 9/24/2008