

FOR IMMEDIATE RELEASE  
Jan. 29, 2019

Contact: Roy Betts  
202-268-3207

[roy.a.betts@usps.gov](mailto:roy.a.betts@usps.gov)  
[usps.com/news](https://usps.com/news)



## U.S. Postal Service Announces Updates to the 2019 Stamp Program *Tennis Champion Maureen Connolly Brinker, Artist Ellsworth Kelly and Transcontinental Railroad Among the New Additions*

WASHINGTON — The U.S. Postal Service today revealed five additional subjects to the 2019 Stamp Program. More details on dates and locations for the first-day-of-issue ceremonies are coming.



### **Star Ribbon**

The Postal Service issues Star Ribbon, a stamp designed to meet the needs of business mailers. The artwork features a digital illustration of a star made of red, white and blue ribbon. The white space in the middle of the ribbon creates a second smaller star. The tri-colored ribbon, folded into a patriotic symbol, is intended to evoke the connectedness of the American people. The stamp will be sold in coils of 10,000 and in panes of 20. Greg Breeding was the art director. Aaron Draplin designed the stamp and created the artwork.



### **“Little Mo”**

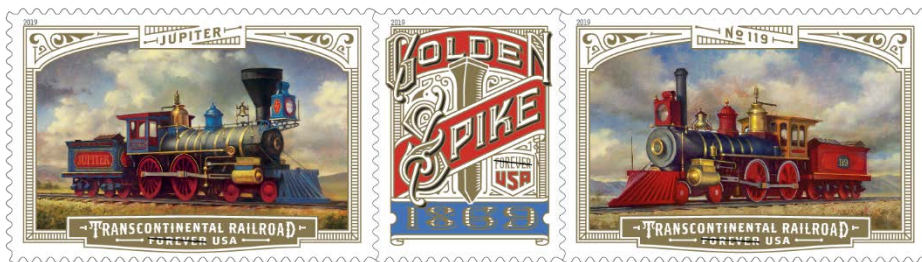
This issuance honors extraordinary tennis champion Maureen Connolly Brinker (1934–1969). The stamp art features an oil-on-linen painting of the tennis star by Gregory Manchess. Based on a black-and-white photograph taken in 1952, the portrait is a colorful interpretation of Connolly hitting a low volley. Nicknamed "Little Mo," the 5-foot-4-inch dynamo used powerful groundstrokes to become the first woman to win all four major tennis tournaments in a calendar year. Art director Derry Noyes designed the stamp.



## Ellsworth Kelly

This issuance honors artist Ellsworth Kelly (1923–2015). Kelly pioneered a distinctive style of abstraction based on real elements reduced to their essential forms. His artworks include paintings, sculpture and works on paper. The 20 stamps on

the pane feature 10 pieces, each represented twice: *Yellow White* (1961), *Colors for a Large Wall* (1951), *Blue Red Rocker* (1963), *Spectrum I* (1953), *South Ferry* (1956), *Blue Green* (1962), *Orange Red Relief (for Delphine Seyrig)* (1990), *Meschers* (1951), *Red Blue* (1964) and *Gaza* (1956). A detail from *Blue Yellow Red III* (1971) appears in the selvage. Derry Noyes served as art director and designer for this issuance.



## Transcontinental Railroad

Three new stamps in a pane of 18 mark the 150th anniversary of the completion of the transcontinental railroad, a massive

engineering feat that reduced travel time across the country from as many as six months to about one week and made the American West an integral part of the nation. Two different stamps feature the *Jupiter* and the *No. 119* locomotives that powered the trains carrying the officers and guests of two train companies to the "Golden Spike Ceremony," held when the two rail lines were joined at Promontory Summit in Utah. A third stamp portrays the famous golden spike that was a prominent part of the ceremony. Art director Greg Breeding designed the issuance. Michael J. Deas painted the *Jupiter* and *No. 119* stamps. Kevin Cantrell illustrated the stamp depicting the ceremonial golden spike and did the border treatments and typography for all three stamps.



## Military Working Dogs

The Postal Service honors the nation's brave and loyal military working dogs with this new booklet of 20 stamps. Each block of four stamps features one stamp of each of the following breeds — German shepherd, Labrador retriever, Belgian Malinois and Dutch shepherd — that commonly serve in America's armed forces. The background of each stamp features a detail of a white star. A star appears in the center of each block. The stylized digital illustrations are in red, white, blue and gold to represent the American flag and patriotism. The art was created by DKNK Studios. Art director Greg Breeding designed the stamps

The Postal Service receives no tax dollars for operating expenses and relies on the sale of postage, products and services to fund its operations.

###

**Please Note:** For U.S. Postal Service media resources, including broadcast quality video and audio and photo stills, visit the [USPS Newsroom](#). Follow us on [Twitter](#), [Instagram](#), [Pinterest](#), and [LinkedIn](#). Subscribe to the [USPS YouTube Channel](#), like us on [Facebook](#) and enjoy our [Postal Posts blog](#). For more information about the Postal Service, visit [usps.com](#) and [facts.usps.com](#).