



# Greetings from the USPSAL SERVICE



Winter Sports



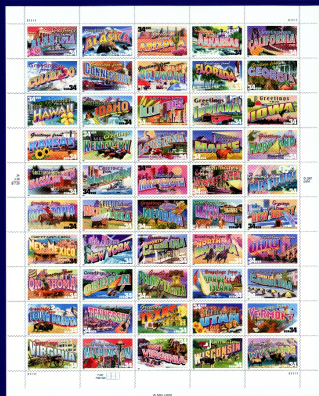
Year of the Horse



Mentoring a Child



Langston Hughes



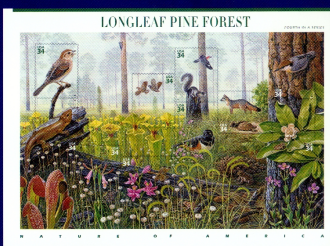
Greetings from America



United States Military Academy



Happy Birthday



Longleaf Pine Forest



Masters of American Photography

## Masters of American Photography



Irving Berlin



John James Audubon



Harry Houdini



Andy Warhol



Teddy Bears



Ogden Nash



Marguerite Higgins



Ida M. Tarbell



Ethel L. Payne



Mollie Bly



Duke Kahanamoku



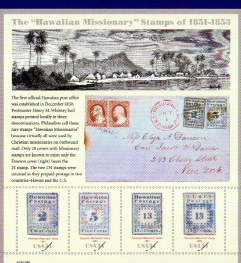
Spay



American Bats



Holiday Snowmen



Hawaiian Missionaries

**Winter Sports**  
The U.S. Postal Service recognizes the competitive drive of athletes who take part in winter sports by issuing a pane of stamps depicting figure skating, ice hockey, snowboarding, and ski jumping.  
Issuance: January 8  
Format: PSA pane of 20 with header

**Lunar New Year: Year of the Horse**  
This stamp, tenth in the award-winning Lunar New Year series of twelve stamps designed by Clarence Lee, colorfully combines a paper-cut design of a horse with grass-style calligraphy.  
Issuance: February 11; Format: PSA pane of 20

**Mentoring a Child**  
Mentors—dedicated volunteers who offer friendship, guidance, and support to youth—can fill a need for positive adult role models. With this stamp, the U.S. Postal Service continues its tradition of raising public awareness of social issues.  
Issuance: January 10; Format: PSA pane of 20 with selvage

**Black Heritage: Langston Hughes**  
The innovative poetry of Langston Hughes combined jazz, blues, and the black vernacular with traditional poetry. This 25th stamp in the Black Heritage series honors this extraordinary writer on the centennial of his birth.  
Issuance: February 1; Format: PSA pane of 20

**Happy Birthday**  
With vibrant colors and a shower of confetti, this new Happy Birthday stamp makes it easy to add a festive touch to birthday cards and packages.  
Issuance: February 9; Format: PSA pane of 20

**United States Military Academy**  
The United States Military Academy, located at West Point on the Hudson River in New York State, prepares graduates for careers as officers in the U.S. Army and lifetimes of service to the nation. Featuring the West Point coat of arms, this stamp recognizes the bicentennial of the academy.  
Issuance: March 14; Format: PSA pane of 20

**Greetings from America**  
Inspired by retro "large letter" postcards, these colorful stamps feature depictions of local scenes in each of the 50 states. Tied on the back of each stamp lies that state's bird, flower, tree, capital, and date of entry into the Union. Greetings from America is the first pane of 50 stamps to be issued in ten years.  
Issuance: April 4; Format: PSA pane of 50

**Notable of America: Longleaf Pine Forest**  
The longleaf pine forest occupies parts of the coastal plains from southeastern Virginia to eastern Texas. This stamp pane, fourth in an educational series designed to promote appreciation of North America's major plant and animal communities, takes us to the heart of a longleaf pine forest with artwork by John S. Douvan.  
Issuance: April; Format: PSA souvenir sheet of 10

**Irving Berlin**  
An accomplished songwriter, Irving Berlin indeed chose the direction of American popular music with more than 1,000 songs. Many of them, including "God Bless America," became standards that are still favorites today.  
Issuance: May 11; Format: PSA pane of 20

**American Treasures: John James Audubon**  
John James Audubon's vividly colored and exquisitely rendered portrait of two tanager species—Louisiana Tanager and Scarlet Tanager—appears on this second issuance in the American Treasures series.  
Issuance: June 27; Format: PSA pane of 20 with header

**Masters of American Photography**  
This pane of 20 stamps honors some of our country's most important and influential photographers with a chronological sampling of the art form. From its initial steps through the late 20th century, included are stunning examples of portrait, documentary, landscape, still life, abstract, and fine art photography.  
Issuance: June  
Format: PSA pane of 20 with selvage

**Harry Houdini**  
This stamp honors Harry Houdini, America's most famous escape artist and magician. Houdini served as president of the Society of American Magicians from 1917 until his death in 1926; this stamp issuance coincides with the 100th anniversary of the society.  
Issuance: July 3; Format: PSA pane of 20

**Andy Warhol**  
This stamp pays tribute to Andy Warhol, a leading figure in the pop art movement and one of the most influential artists of his time. Warhol's career also included ventures in design, photography, film, television, writing, and publishing.  
Issuance: August 9  
Format: PSA pane of 20 with selvage

**Teddy Bears**  
These stamps feature four lovable and cuddly teddy bears that were manufactured in the U.S. during the first half of the 20th century.  
Issuance: August 15  
Format: PSA pane of 20 with header

**Literary Arts: Ogden Nash**  
A gentle satirist, Ogden Nash poked fun at human foibles without cynicism in poetry that expressed his wit and demonstrated his playfulness with language. This 18th stamp in the Literary Arts series honors Nash on the centennial of his birth.  
Issuance: August 19; Format: PSA pane of 20

**Duke Kahanamoku**  
Internationally known as a champion swimmer, father of modern surfing, and Hawaii's goodwill ambassador, Duke Kahanamoku was renowned not only for his incredible athletic prowess, but also for his grace and good sportsmanship.  
Issuance: August 24; Format: PSA pane of 20

**Women in Journalism**  
This souvenir sheet reproduces examples of Hawaii's first four postage stamps, the rare Hawaiian Missionaries. These stamps, considered among the world's finest philatelic items, earned their name because they were primarily used by missionaries in Hawaii as correspondence to the U.S. in the early 1850s.  
Issuance: October  
Format: General souvenir sheet of 4

**Holiday Snowmen**  
Popular in folklore, literature, and song, snowmen have come to symbolize the joy and magic of the holiday season. Photographs of four whimsical snowman figures comprise this year's Holiday Snowman issuance.  
Issuance: October; Format: PSA pane of 20

**Neuter or Spay**  
Animal shelters and veterinarians throughout the country urge pet owners to combat the problem of animal overpopulation by neutering or spaying their dogs and cats. The U.S. Postal Service raises awareness of this important issue with these stamps featuring a neutered puppy and a spayed kitten.  
Issuance: September  
Format: PSA pane of 20 with header

**American Bats**  
Long misunderstood, bats are essential to nature's balance. They consume farm and forest pests, pollinate flowers, and carry seeds to new locations. This stamp pane features striking photographs of four bats whose ranges include the continental United States: the red bat, the pallid bat, the spotted bat, and the leaf-eared bat.  
Issuance: September  
Format: PSA pane of 20 with header

**Hawaiian Missionaries**  
This souvenir sheet reproduces examples of Hawaii's first four postage stamps, the rare Hawaiian Missionaries. These stamps, considered among the world's finest philatelic items, earned their name because they were primarily used by missionaries in Hawaii as correspondence to the U.S. in the early 1850s.  
Issuance: October  
Format: General souvenir sheet of 4