



## Don't Fall for Romance Scams

See page 3

# Contents

## COVER STORY

Don't Fall for Romance Scams . . . . . 3

## POLICIES, PROCEDURES, AND FORMS UPDATES

### Manuals

DMM Revision: Parcel Return Service Clarification . . . . . 5

IMM Revision: International Product Change . . . . . 6

### Forms

PS Form 2181-A Revision: Pre-Employment  
Screening — Authorization and Release . . . . . 7

## ORGANIZATION INFORMATION

### Environmental Management

Environmental Compliance Reminder: Training  
Requirements . . . . . 8

### Human Resources

February is Heart Disease Awareness Month . . . . . 8

### Safety and Health

Statutory Requirement to Review and Post OSHA  
Form 300A Summary for Calendar Year 2022 . . . . . 10

### Stamp Services

Stamp Announcement 23-14: Art of the Skateboard  
Stamps . . . . . 11

Stamp Announcement 23-15: Tulip Blossoms Stamps . . . . . 33

Stamp Stock Items Withdrawn from Regular Sale and  
from Sale at Philatelic Centers . . . . . 35

Pictorial Postmarks Announcement . . . . . 36

How to Order the First-Day-of-Issue Digital Color or  
Traditional Postmarks . . . . . 39

## PULL-OUT INFORMATION

### Fraud

Invalid USPS Corporate Account Numbers . . . . . 13

Missing, Lost, or Stolen U.S. Money Order Forms . . . . . 15

Missing, Lost, or Stolen Canadian Money Order Forms . . . . . 21

Verifying U.S. Postal Service Money Orders . . . . . 23

Counterfeit Canadian Money Order Forms . . . . . 23

Toll-Free Number Available to Verify Canadian  
Money Orders . . . . . 23

### Other Information

Overseas Military/Diplomatic Mail . . . . . 24

Thrift Savings Plan Fact Sheet . . . . . 30

Freely Associated States Restrictions . . . . . 32

## POSTAL BULLETIN 2022 ANNUAL INDEX

2022 Annual Index . . . . . PB 22616 (1-26-23)

Find the latest in mail and delivery information  
and services offered by U.S. Postal®  
in the *Postal Bulletin* at  
[about.usps.com/postal-bulletin](https://about.usps.com/postal-bulletin)

**Mail Moment®**

# Cover Story

## Don't Fall for Romance Scams

With online dating and social media, it's easier than ever to meet new people and find that special someone. Unfortunately, scammers can bring heartache to those looking for love. In these romance scams, con artists create compelling backstories — and phony identities — to trick you into falling for someone *who doesn't even exist*.

Targets of romance schemes are usually older Americans, but veterans, active military members, or anyone looking for a new friendship or romance can be fooled. Frequently, scammers will use fake profiles or stolen identities (Facebook or LinkedIn accounts) to market themselves as a potential love interest.

Beware of new or romantic relationships found through:

- Dating sites or apps.
- Social media.
- Online groups.
- Anywhere the meeting is not face-to-face.

Watch out for these “red flags” when you receive communications from someone you don't know:

- Urgent requests for money for supplies, travel, medical needs, or an emergency.

- Requests to receive or forward money or packages on someone's behalf.
- Facts that don't match, like their name and the name in their email address.
- Strict refusal to meet in person.

If you suspect that the person you are communicating with is a scammer:

- Do not send money to someone you just met.
- Do not act impulsively. Stop, take your time, and think before acting.
- Discuss the situation with friends or family.
- Concerned family or friends should be on the lookout for suspicious or unusual receipts (i.e., money orders, gift cards, or overnight mailing receipts).

For more information about romance scams, visit [uspis.gov/news/scam-article/romance-scam](https://uspis.gov/news/scam-article/romance-scam).

If you need to report a romance scam or any other crime involving the mail, visit [uspis.gov/report](https://uspis.gov/report) or call 877-876-2455.

— *Communications, Governance, and Strategy*,  
U.S. Postal Inspection Service, 2-23-23

# Enjoy the Thrill of Iconic **Pony Cars** Forever® Stamps



**ON SALE NATIONWIDE: AUGUST 25, 2022**  
Sold as a full pane.

# Policies, Procedures, and Forms Updates

## Manuals

### DMM Revision: Parcel Return Service Clarification

Effective July 9, 2023, the Postal Service™ will revise *Mailing Standards of the United States Postal Service*, Domestic Mail Manual (DMM®), section 505.4.0, to clarify resources for information on Parcel Return Service (PRS).

Effective January 22, 2023, in the article titled “DMM Revision: Domestic Competitive Products Pricing and Mailing Standards Changes” in *Postal Bulletin 22615* (1-12-23, pages 6–12), the Postal Service revised standards for PRS to be a competitive product only available through a Negotiated Service Agreement. This revision will add PostalPro as a resource for information on PRS.

Although the Postal Service will not publish this revision in the DMM until July 9, 2023, the standard is effective immediately.

#### ***Mailing Standards of the United States Postal Service, Domestic Mail Manual (DMM)***

#### **500 Additional Mailing Services**

\* \* \* \* \*

#### **505 Return Services**

\* \* \* \* \*

#### **4.0 Parcel Return Service**

*[Revise the text of 4.0 to read as follows:]*

Parcel Return Service (PRS) applies to parcels that are picked up in bulk at authorized locations and schedules by authorized permit holders or their agents. Parcel Return Service is only available through a Negotiated Service Agreement (NSA) (see 709.1.0). For additional details, see “Parcel Return Service” at PostalPro or contact a USPS sales representative.

\* \* \* \* \*

The Postal Service will incorporate this revision into the July 9, 2023, edition of the online DMM, which is available via Postal Explorer® at [pe.usps.com](https://pe.usps.com).

— *Product Classification, Product Solutions, 2-23-23*

## IMM Revision: International Product Change

The Postal Service™ is revising *Mailing Standards of the United States Postal Service*, International Mail Manual (IMM®) to reflect the discontinuation of Priority Mail International Regional Rate® Boxes — Non-Published Rates and Priority Mail International Regional Rate Boxes, which were available only to commercial customers with an agreement with the Postal Service specifically for Priority Mail International Regional Rate Boxes.

On November 10, 2022, in Postal Regulatory Commission (PRC) Docket No. MC2023-45, the Postal Service filed a request to remove Priority Mail International Regional Rate Boxes — Non-Published Rates and Priority Mail International Regional Rate Boxes Contracts from the Competitive Price List. In addition, on November 10, 2022, in PRC Docket No. MC2023-46, the Postal Service filed a request for changes to the Global Reseller Expedited Package Contracts product to remove mention of Priority Mail International Regional Rate Box.

On November 21, 2022, the Postal Service published notice of the filings in PRC Docket Nos. MC2023-45 and MC2023-46 in the *Federal Register* notices titled “International Product Change — Removal of Priority Mail International Regional Rates Boxes — Non-Published Rates and Priority Mail International Regional Rates Boxes Contracts” and “International Product Change — Global Reseller Expedited Package Contracts” (87 FR 70869).

As stated in the PRC’s Order No. 6378 issued in Docket Nos. MC2023-45 and MC2023-46 on December 20, 2022, the PRC favorably reviewed the requests, which have an effective date of January 22, 2023. The order is available on the PRC website at [prc.gov](https://www.prc.gov).

Although these revisions will be published in the next edition of the online IMM, the standards are effective immediately.

### ***Mailing Standards of the United States Postal Service, International Mail Manual (IMM)***

\* \* \* \* \*

## **1 International Mail Services**

### **110 General Information**

\* \* \* \* \*

### **116 Trademarks of the USPS**

#### **116.1 USPS Trademarks in the IMM**

\* \* \* \* \*

Exhibit 116.1

#### **USPS Trademarks in the IMM**

*[Remove the entry for “Priority Mail International Regional Rate” from the list.]*

\* \* \* \* \*

## **2 Conditions for Mailing**

\* \* \* \* \*

### **230 Priority Mail International**

\* \* \* \* \*

### **232 Eligibility**

\* \* \* \* \*

#### **232.5 Priority Mail International Parcels**

*[Revise 232.5 by removing the title of 232.51 and the title and text of 232.52 — the revised 232.5 will contain only the text from 232.51.]*

\* \* \* \* \*

The Postal Service will incorporate these revisions into the next edition of the online IMM, which is available via Postal Explorer® at [pe.usps.com](https://pe.usps.com).

— Product Classification,  
Product Solutions, 2-23-23

## Forms

### PS Form 2181-A Revision: Pre-Employment Screening — Authorization and Release

Effective January 2023, the Postal Service™ revised PS Form 2181-A, *Pre-Employment Screening — Authorization and Release*. The Privacy Act Statement has been updated to align with the Privacy Act System of Records (SOR) 7000.000, Inspection Service Investigative File System.

The use of revised PS Form 2181-A is effective immediately. All previous editions of PS Form 2181-A are obsolete and must be recycled.

Revised PS Form 2181-A is available on the PolicyNet website:

- Go to [blue.usps.gov](https://blue.usps.gov).
- In the left-hand column, click *Essential Links*, and then click *PolicyNet*.
- Go to the right-hand side under “Published Forms and Directives,” click *Forms*, and then click on the range 2000–2999.
- Scroll down to the form entry and click the PDF icon.

The direct URL for the Postal Service PolicyNet website is [blue.usps.gov/cpim](https://blue.usps.gov/cpim).

— *National Human Resources,  
Human Resources, 2-23-23*

# Organization Information

## Environmental Management

### Environmental Compliance Reminder: Training Requirements

Environmental compliance training ensures that employees are competent to perform tasks that can have a significant impact on the environment. This training is also required by federal, state, and local environmental laws and regulations, as well as Postal Service™ policy.

Environmental compliance training requirements vary based on the operations and systems at each site, local jurisdiction, and employee roles and responsibilities. Postal Service sites that generate hazardous or regulated waste, store oil in aboveground or underground storage tanks, or conduct vehicle maintenance activities may have more training requirements.

Site installation heads are responsible for ensuring that employees receive required environmental compliance training based on their responsibilities. Employees must be

trained before performing the activity or within a specified period after hire (e.g., within the first 90 days). Additionally, recurring training may be required.

Environmental compliance training courses are now virtual and available on demand in HERO at [usps.csod.com/saml/default.aspx](https://usps.csod.com/saml/default.aspx).

For more information about required courses, the employee audience for each course, and the associated training frequency, see the Environmental Training Matrix at [blue.usps.gov/sustainability/\\_pdf/env-training-matrix.pdf](https://blue.usps.gov/sustainability/_pdf/env-training-matrix.pdf).

Additional training materials, including service talks and videos, are available on the Sustainability website at [blue.usps.gov/sustainability/environmental/training.htm](https://blue.usps.gov/sustainability/environmental/training.htm).

— *Environmental Affairs and Corporate Sustainability,  
Corporate Affairs, 2-23-23*

## Human Resources

### February is Heart Disease Awareness Month

In 2020, according to the Centers for Disease Control and Prevention (CDC), 697,000 people in the United States died from heart disease (about one in every five deaths). Heart disease refers to several types of heart conditions. In the United States, coronary artery disease (CAD) is the most common type of heart disease. CAD affects blood flow to the heart which can cause a heart attack.

Some risk factors cannot be controlled, such as your age and family history. If you have high blood pressure, high cholesterol, or are a smoker, you have an increased risk of heart disease. About half of the people in the United States have at least one of these three risk factors. Several other medical conditions and lifestyle choices can also put people at a higher risk for heart disease:

- Diabetes.
- Obesity.
- Unhealthy diet.
- Physical inactivity.
- Excessive alcohol use.

You can reduce your risk of heart disease by making changes to your diet and lifestyle. Eating a diet that is low in saturated fat, trans fat, and cholesterol is recommended. If you take in more cholesterol than the body can use, the extra cholesterol can build up in the walls of the arteries, including those of the heart. This leads to narrowing of the arteries and can decrease the blood flow to the heart, brain, kidneys, and other parts of the body.

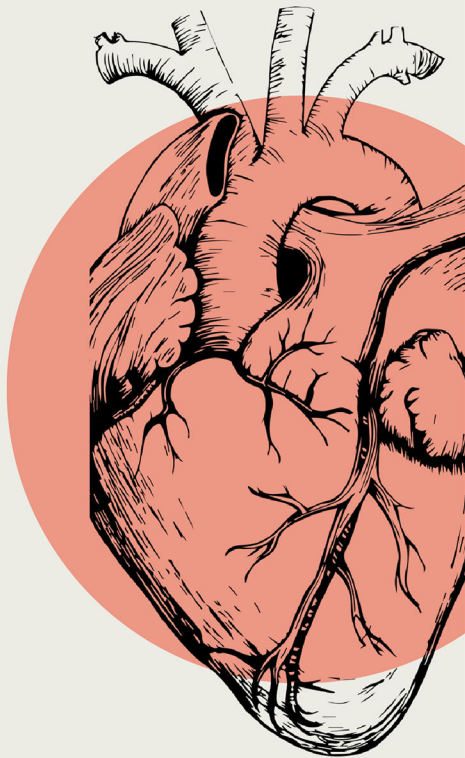
Limiting alcohol consumption and quitting smoking will also reduce your risk. The CDC recommends that women have no more than one drink per day and men have no more than two drinks per day. If you are a smoker and would like to quit smoking, most Federal Employee Health Benefits insurance plans offer smoking cessation support.

For more information, visit [cdc.gov/heartdisease/risk\\_factors.htm](https://cdc.gov/heartdisease/risk_factors.htm).

— *Benefits and Wellness,  
Human Resources, 2-23-23*

# Heart Disease Facts

Heart disease is the leading cause of death for men, women, and people of most racial and ethnic groups in the United States.



Heart disease and stroke can affect anyone, but some groups are more likely to have conditions that increase their risk for cardiovascular disease.

Heart disease is the leading cause of death for people of most racial and ethnic groups in the United States, including African Americans, American Indians and Alaska Natives, and white people.

## Did you know?

- 1** One person dies every 34 seconds in the United States from cardiovascular disease.
- 2** In the United States, someone has a heart attack every 40 seconds.
- 3** About 1 in 5 heart attacks are silent—the damage is done, but the person is not aware of it.
- 4** Coronary heart disease is the most common type of heart disease, killing 382,820 people in 2020.
- 5** Diabetes, obesity, excessive alcohol use, unhealthy diet, and physical inactivity increase the risk of heart disease.
- 6** Reduce your risk of heart disease by engaging in at least 2 hours and 30 minutes of physical activity weekly.

**February 3, 2023 is National Wear Red Day.**

Wear red to show your support of the prevention of heart disease.



Sources:  
<https://www.cdc.gov/heartdisease/facts.htm>  
[https://www.cdc.gov/heartdisease/risk\\_factors.htm](https://www.cdc.gov/heartdisease/risk_factors.htm)

## Safety and Health

### Statutory Requirement to Review and Post OSHA Form 300A Summary for Calendar Year 2022

The Occupational Safety and Health Administration (OSHA) requires all Postal Service™ installation and establishment heads to complete and post the OSHA Form 300A, *Summary of Work-Related Injuries and Illnesses*, for calendar year (CY) 2022, in accordance with 29 CFR 1904, and the *Employee and Labor Relations Manual* (ELM), part 821, Actions in the Event of Accident, Injury, or Illness.

From February 1 through April 30, 2023, installations are required to post a copy of the OSHA Form 300A for CY 2022 in a conspicuous place at every establishment where employees work or report to work.

When reviewing the OSHA 300 Log, installation heads must pay close attention to the following columns:

- Column F, which includes:
  - A description of the injury or illness.
  - The parts of the body affected (including which side of the body).
  - The object or substance that directly injured or made the person ill (e.g., Second-degree burns on right forearm from acetylene torch).
- Columns K and L. If an injury is identified as “days away from work” in column K or “on the job transfer or restriction” in column L, installation heads must ensure that the number of days entered is accurate.

For every entry on the OSHA 300 Log, the installation head must ensure that there is a corresponding Accident Report.

The left side of OSHA Form 300A contains sets of information data points with a letter, such as the letter “K,” that corresponds to each data point. The data points come from the OSHA 300 Log summary columns with the same letter.

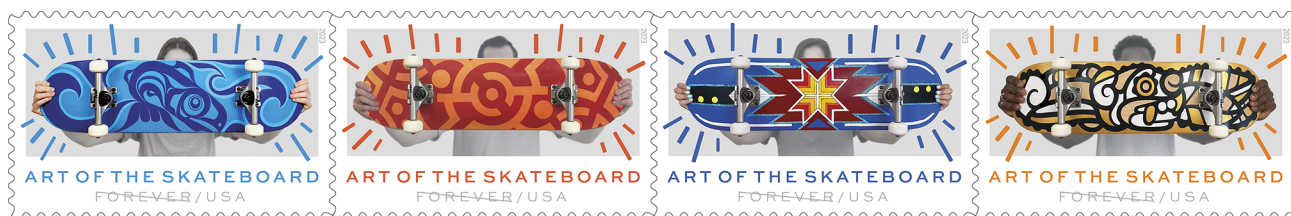
The right side of the OSHA Form 300A is self-explanatory except for the North American Industrial Classification code. The code for Vehicle Maintenance Facilities is 811111, and the code for all other Postal Service establishments is 491110.

Before posting and signing the OSHA Form 300A, the installation or establishment heads must review the OSHA 300 Log and the OSHA 300A Summary Reports. When they sign the OSHA Form 300A, they are affirming that they have reviewed both OSHA forms for accuracy and completeness, whether they use manual or automated versions of the forms.

— *Occupational Safety and Health,  
Human Resources, 2-23-23*

## Stamp Services

### Stamp Announcement 23-14: Art of the Skateboard Stamps



©2022 USPS

On March 24, 2023, in Phoenix, AZ, the United States Postal Service® will issue the *Art of the Skateboard* stamps (Forever® priced at the First-Class Mail® rate) in four designs, in a pressure-sensitive adhesive (PSA) pane of 20 stamps (Item 483400). These stamps will go on sale nationwide March 24, 2023, and must not be sold or canceled before the first-day-of-issue. **The *Art of the Skateboard* commemorative pane of 20 stamps must not be split and the stamps must not be sold individually.**

With four new stamps, the Postal Service celebrates the “Art of the Skateboard.” The bold designs featured on the pane of 20 stamps capture the excitement of skateboarding and reflect the diverse creators of these artistic decks:

- A blue and indigo salmon design expresses one artist’s Tlingit/Athabascan heritage.
- A striking red and orange graphic abstraction by a self-taught Virginia artist energizes another skateboard.
- Another represents Navajo culture, featuring a turquoise-inlaid skateboard that displays eagle feathers and the colors of the rising or setting sun.
- A design featuring a stylized jaguar painted in black, white, and gold is by a Colombian-born, Washington, DC-raised muralist.

Art director Antonio Alcalá designed the stamp issuance, using photographs of skateboards created for these stamps by, respectively, Crystal Worl, William James Taylor Junior, Di’Orr Greenwood, and MasPaz (Frederico Frum).

#### **Availability to Post Offices: Item 483400, Art of the Skateboard (Forever Priced at the First-Class Mail Rate) Pane of 20 Stamps**

Stamp Fulfillment Services will not make an automatic push distribution to Post Offices. Post Offices may begin ordering stamps before the first-day-of-issue through SFS Web at [sfsweb.usps.gov/sfsweb](https://sfsweb.usps.gov/sfsweb).

#### **How to Order the First-Day-of-Issue Postmark**

Customers have 120 days to obtain the first-day-of-issue postmark by mail. They may purchase new stamps at their local Post Office™ or at The Postal Store® website at [store.usps.com/store/home](https://store.usps.com/store/home). They must affix the stamps to envelopes of their choice, address the envelopes (to themselves or others), and place them in a larger envelope addressed to:

FDI – Art of the Skateboard Stamps  
USPS Stamp Fulfillment Services  
8300 NE Underground Drive, Suite 300  
Kansas City, MO 64144-9900

After applying the first-day-of-issue postmark, the Postal Service will return the envelopes through the mail. There is no charge for the postmark up to a quantity of 50. There is a 5-cent charge for each additional postmark over 50. All orders must be postmarked by July 24, 2023.

#### **How to Order First-Day Covers**

The Postal Service also offers first-day covers for new stamp issues and Postal Service stationery items postmarked with the official first-day-of-issue cancellation. Each item has an individual catalog number and is offered in the *USA Philatelic* catalog and online at [store.usps.com/store/home](https://store.usps.com/store/home). Customers may register to receive a free *USA Philatelic* catalog online at [usps.com/philatelic](https://usps.com/philatelic).

**Locally produced items are not authorized. Only merchandise that has been approved and assigned an item number by Headquarters Retail Marketing may be produced and sold.**

|                               |  |
|-------------------------------|--|
| Issue:                        | <i>Art of the Skateboard</i> Stamps  |
| Item Number:                  | 483400   |
| Denomination & Type of Issue: | First-Class Mail Forever   |
| Format:                       | Pane of 20 (4 designs)   |
| Series:                       | N/A  |
| Issue Date & City:            | March 24, 2023, Phoenix, AZ 85026  |
| Art Director:                 | Antonio Alcalá, Alexandria, VA   |
| Designer:                     | Antonio Alcalá, Alexandria, VA   |
| Artist:                       | Crystal Worl   |
| Artist:                       | William James Taylor Junior  |
| Artist:                       | Di'Orr Greenwood   |
| Artist:                       | MasPaz (Frederico Frum)  |
| Modeler:                      | Sandra Lane / Michelle Finn  |
| Manufacturing Process:        | Offset   |
| Printer:                      | Banknote Corporation of America  |
| Press Type:                   | Gallus RCS   |
| Stamps per Pane:              | 20   |
| Print Quantity:               | 18,000,000 stamps  |
| Paper Type:                   | Phosphor Tagged Paper, Block   |
| Adhesive Type:                | Pressure-sensitive   |
| Colors:                       | Cyan, Magenta, Yellow, Black, Cool Gray 5C, Pantone 7688C, Pantone 172C, Pantone 715C, Pantone 7684C |
| Stamp Orientation:            | Horizontal   |
| Image Area (w x h):           | 1.42 x 0.84 in / 36.068 x 21.336 mm  |
| Overall Size (w x h):         | 1.56 x 0.98 in / 39.624 x 24.892 mm  |
| Full Pane Size (w x h):       | 7.24 x 5.92 in / 183.896 x 150.368 mm  |
| Press Sheets Size (w x h):    | 21.72 x 11.84 in./ 551.688 x 300.736 mm  |
| Plate Size:                   | 120 stamps per revolution  |
| Plate Number:                 | "B" followed by nine (9) single digits   |
| Marginal Markings:            |  |
| Front:                        | Plate number in four corners of the pane   |
| Back:                         | ©2022 USPS • USPS logo • Two barcodes (483400) • Plate position diagram (6) • Promotional text       |

— Stamp Services,  
Marketing, 2-23-23

# Pull-Out Information

## Fraud

### Invalid USPS Corporate Account Numbers

Provide this listing to Contract Postal Units and acceptance clerks in non-POS locations without intranet access to validate a USPS Corporate Account (USPSCA) number online. For all other locations, online USPSCA validation is preferred. This list supersedes all previous notices, which you must recycle.

Acceptance clerks must not accept Priority Mail Express® shipments bearing an invalid USPSCA number in the “Payment by Account” or “Agreement Number” section of the label or form.

**Note:** The first 6 digits of a 9-digit Custom Designed Service and Next Day Pickup Agreement make up the Corporate Account Number.

---

|               |        |               |        |               |               |               |               |               |        |               |        |        |        |
|---------------|--------|---------------|--------|---------------|---------------|---------------|---------------|---------------|--------|---------------|--------|--------|--------|
| <b>005691</b> | 022631 | 076080        | 113018 | 142822        | <b>326003</b> | 381543        | 495078        | <b>604333</b> | 731432 | <b>811045</b> | 904532 | 940086 | 995356 |
| 008176        | 022913 | 077311        | 117097 | 152668        | 366005        | <b>454436</b> | 497318        | 608032        | 752076 | 853411        | 921198 | 941004 | 997170 |
| 018005        | 027188 | <b>105324</b> | 124187 | 185066        | 379505        | 473150        | <b>553006</b> | <b>708474</b> | 752118 | 853902        | 927981 | 941516 |        |
| 021177        | 056013 | 107997        | 125228 | <b>221361</b> | 380180        | 481264        | 553019        | 725044        | 754027 | 875121        | 931775 | 967069 |        |
| 021636        | 070421 | 110398        | 142272 | 223281        | 381529        | 481366        | 554787        | 730836        | 757072 | <b>901629</b> | 933181 | 995022 |        |

— Product Information Requirements, Mail Entry and Payment Technology, 2-23-23

# Send Warmth and Cheer in Winter with ***Snowy Beauty*** Forever® Stamps



**ON SALE NATIONWIDE: OCTOBER 11, 2022**



|                     |           |             |              |    |      |                     |           |             |              |    |      |
|---------------------|-----------|-------------|--------------|----|------|---------------------|-----------|-------------|--------------|----|------|
| 214 303 6239        | to        | 6258        | 252 833 3286 | to | 3297 | 258 405 6900        | to        | 6999        | 262 337 4800 | to | 4899 |
| 214 877 4251        | to        | 4273        | 253 470 3948 | to | 3999 | 258 405 7000        | to        | 7099        | 262 337 4900 | to | 4999 |
| 215 252 3918        | to        | 3992        | 253 565 7400 | to | 7499 | 258 405 7100        | to        | 7199        | 262 337 5000 | to | 5099 |
| <b>217 585 1400</b> | <b>to</b> | <b>1499</b> | 254 252 2800 | to | 2899 | 258 405 7200        | to        | 7299        | 262 337 5100 | to | 5199 |
| 218 698 2157        | to        | 2199        | 254 252 2900 | to | 2999 | 258 405 7300        | to        | 7399        | 262 337 5200 | to | 5299 |
| 218 746 0800        | to        | 0899        | 254 252 3000 | to | 3099 | 258 405 7400        | to        | 7499        | 262 337 5300 | to | 5399 |
| 219 095 0100        | to        | 0399        | 254 252 3100 | to | 3199 | 258 405 7800        | to        | 7899        | 262 337 5400 | to | 5499 |
| 219 389 1885        | to        | 1899        | 254 252 3200 | to | 3299 | 258 405 7900        | to        | 7999        | 262 337 5500 | to | 5599 |
| 219 568 7435        | to        | 7456        | 254 252 3300 | to | 3399 | 258 405 8000        | to        | 8099        | 262 337 5600 | to | 5699 |
| 219 568 7469        | to        | 7487        | 254 252 3400 | to | 3499 | 258 405 8100        | to        | 8199        | 262 337 5700 | to | 5799 |
| <b>221 316 5757</b> | <b>to</b> | <b>5799</b> | 254 252 3500 | to | 3599 | 258 405 8200        | to        | 8299        | 262 337 5800 | to | 5899 |
| 223 476 3914        | to        | 3999        | 254 252 3600 | to | 3699 | 258 405 8300        | to        | 8399        | 262 337 5900 | to | 5999 |
| 223 565 4921        | to        | 4957        | 254 252 3700 | to | 3799 | 258 405 8400        | to        | 8499        | 262 337 6000 | to | 6099 |
| 223 565 4979        | to        | 4999        | 254 252 3800 | to | 3899 | 258 405 8500        | to        | 8599        | 262 337 6100 | to | 6199 |
| 224 636 4745        | to        | 4765        | 254 252 3900 | to | 3999 | 258 405 8600        | to        | 8699        | 262 337 6200 | to | 6299 |
| 224 636 4776        | to        | 4799        | 254 252 4000 | to | 4099 | 258 405 8700        | to        | 8799        | 262 337 6300 | to | 6399 |
| 224 636 4855        | to        | 4885        | 254 252 4100 | to | 4199 | 258 405 8800        | to        | 8899        | 262 337 6400 | to | 6499 |
| 224 636 4932        | to        | 4948        | 254 252 4200 | to | 4299 | 258 405 8900        | to        | 8999        | 262 337 6500 | to | 6599 |
| 224 636 4950        | to        | 4962        | 254 252 4300 | to | 4399 | 258 405 9600        | to        | 9699        | 262 337 6600 | to | 6699 |
| 224 636 4985        | to        | 4999        | 254 252 4400 | to | 4499 | 258 405 9700        | to        | 9799        | 262 337 6700 | to | 6799 |
| 224 723 0757        | to        | 0799        | 254 252 4500 | to | 4599 | 258 405 9800        | to        | 9899        | 262 337 6800 | to | 6899 |
| 224 730 2207        | to        | 2299        | 254 252 4600 | to | 4699 | 258 405 9900        | to        | 9999        | 262 337 6900 | to | 6999 |
| 225 970 0500        | to        | 0599        | 254 252 4700 | to | 4799 | 259 014 9989        | to        | 9999        | 262 337 7000 | to | 7099 |
| 225 970 0600        | to        | 0699        | 254 252 4800 | to | 4899 | 259 062 4788        | to        | 4798        | 262 337 7100 | to | 7199 |
| 225 970 0700        | to        | 0799        | 254 252 4900 | to | 4999 | 259 218 1400        | to        | 1499        | 262 337 7200 | to | 7299 |
| 227 033 8679        | to        | 8699        | 254 565 7607 | to | 7700 | 259 218 1500        | to        | 1599        | 262 337 7300 | to | 7399 |
| 227 275 9400        | to        | 9999        | 254 907 1203 | to | 1299 | 259 218 1600        | to        | 1699        | 262 337 7400 | to | 7499 |
| 228 463 2456        | to        | 2499        | 255 185 9527 | to | 9599 | 259 590 5654        | to        | 5699        | 262 337 7500 | to | 7599 |
| 228 510 4852        | to        | 4899        | 255 397 1557 | to | 1576 | 259 670 8268        | to        | 8299        | 262 337 7600 | to | 7699 |
| 229 462 8451        | to        | 8475        | 255 425 2989 | to | 2998 | 259 835 6238        | to        | 6399        | 262 337 7700 | to | 7799 |
| 229 668 5977        | to        | 5999        | 255 728 6412 | to | 6499 | 259 835 6701        | to        | 6799        | 262 337 7800 | to | 7899 |
| 229 923 9176        | to        | 9199        | 255 728 9842 | to | 9899 | <b>260 224 4600</b> | <b>to</b> | <b>4699</b> | 262 337 7900 | to | 7999 |
| 229 924 6696        | to        | 6699        | 256 134 9833 | to | 9839 | 260 224 5941        | to        | 5999        | 262 337 8000 | to | 8099 |
| <b>230 051 9500</b> | <b>to</b> | <b>9999</b> | 256 134 9840 | to | 9849 | 260 310 2821        | to        | 2899        | 262 337 8100 | to | 8199 |
| 236 366 2431        | to        | 2499        | 256 134 9850 | to | 9859 | 260 452 0010        | to        | 0022        | 262 337 8200 | to | 8299 |
| 236 607 6882        | to        | 6899        | 256 134 9860 | to | 9869 | 260 452 0049        | to        | 4299        | 262 337 8300 | to | 8399 |
| 236 660 5853        | to        | 5872        | 256 134 9870 | to | 9879 | 260 553 8200        | to        | 8299        | 262 337 8400 | to | 8499 |
| 239 322 5200        | to        | 5299        | 256 134 9880 | to | 9889 | 260 553 8600        | to        | 8699        | 262 337 8500 | to | 8599 |
| 239 322 5400        | to        | 5499        | 256 134 9890 | to | 9899 | 260 553 9600        | to        | 9799        | 262 337 8600 | to | 8699 |
| 239 322 5600        | to        | 5699        | 256 247 6900 | to | 6999 | 260 553 9800        | to        | 9899        | 262 337 8700 | to | 8799 |
| 239 322 5800        | to        | 5899        | 256 550 5536 | to | 5545 | 260 553 9900        | to        | 9999        | 262 337 8800 | to | 8899 |
| 239 322 5900        | to        | 5999        | 256 799 2257 | to | 2299 | 260 761 1603        | to        | 1662        | 262 337 8900 | to | 8999 |
| 239 607 4783        | to        | 4799        | 257 154 8763 | to | 8799 | 261 183 2100        | to        | 2299        | 262 337 9000 | to | 9099 |
| <b>240 593 1879</b> | <b>to</b> | <b>1899</b> | 257 154 8800 | to | 8899 | 261 426 0408        | to        | 0499        | 262 337 9100 | to | 9199 |
| 242 591 2048        | to        | 2099        | 257 765 4567 | to | 4599 | 262 082 8000        | to        | 8099        | 262 337 9200 | to | 9299 |
| 242 735 0388        | to        | 0398        | 257 765 4610 | to | 4696 | 262 082 8100        | to        | 8199        | 262 337 9300 | to | 9399 |
| 242 951 7276        | to        | 7299        | 257 765 4737 | to | 4799 | 262 082 8200        | to        | 8299        | 262 337 9400 | to | 9499 |
| 243 535 6370        | to        | 6399        | 257 792 7800 | to | 7889 | 262 082 8300        | to        | 8399        | 262 337 9500 | to | 9599 |
| 244 004 9985        | to        | 9999        | 257 792 7900 | to | 7999 | 262 082 8400        | to        | 8499        | 262 337 9600 | to | 9699 |
| 244 004 9985        | to        | 9999        | 257 792 8000 | to | 8099 | 262 288 7302        | to        | 7399        | 262 337 9700 | to | 9799 |
| 244 268 9765        | to        | 9799        | 257 856 9863 | to | 9899 | 262 288 7400        | to        | 7499        | 262 337 9800 | to | 9899 |
| 244 347 4471        | to        | 4499        | 258 103 1773 | to | 1782 | 262 288 9900        | to        | 9999        | 262 337 9900 | to | 9999 |
| 249 056 1551        | to        | 1599        | 258 405 1800 | to | 1899 | 262 337 2600        | to        | 2699        | 262 472 3188 | to | 3199 |
| 249 336 9438        | to        | 9499        | 258 405 1900 | to | 1999 | 262 337 2700        | to        | 2700        | 262 472 3200 | to | 3299 |
| 249 399 4000        | to        | 4099        | 258 405 3300 | to | 3399 | 262 337 2800        | to        | 2800        | 262 546 3100 | to | 3199 |
| 249 399 4100        | to        | 4199        | 258 405 3400 | to | 3499 | 262 337 2900        | to        | 2900        | 262 546 3200 | to | 3299 |
| 249 399 4200        | to        | 4299        | 258 405 3500 | to | 3599 | 262 337 3000        | to        | 3099        | 262 546 3300 | to | 3399 |
| 249 399 4300        | to        | 4399        | 258 405 3700 | to | 3799 | 262 337 3100        | to        | 3199        | 262 546 3400 | to | 3499 |
| 249 399 4400        | to        | 4499        | 258 405 3800 | to | 3899 | 262 337 3200        | to        | 3299        | 262 546 3500 | to | 3599 |
| 249 399 4500        | to        | 4599        | 258 405 3900 | to | 3999 | 262 337 3300        | to        | 3399        | 262 546 3600 | to | 3699 |
| 249 399 4600        | to        | 4699        | 258 405 4000 | to | 4099 | 262 337 3400        | to        | 3499        | 262 546 3900 | to | 3999 |
| 249 399 4700        | to        | 4799        | 258 405 4100 | to | 4199 | 262 337 3500        | to        | 3599        | 262 546 4300 | to | 4399 |
| 249 399 4800        | to        | 4899        | 258 405 4200 | to | 4299 | 262 337 3600        | to        | 3699        | 262 546 4400 | to | 4499 |
| 249 399 4900        | to        | 4999        | 258 405 4600 | to | 4699 | 262 337 3700        | to        | 3799        | 262 546 4500 | to | 4599 |
| <b>250 159 7502</b> | <b>to</b> | <b>7599</b> | 258 405 5600 | to | 5699 | 262 337 3800        | to        | 3899        | 262 546 4600 | to | 4699 |
| 250 566 9644        | to        | 9699        | 258 405 5700 | to | 5799 | 262 337 3900        | to        | 3999        | 262 546 4700 | to | 4799 |
| 250 661 8425        | to        | 8499        | 258 405 5800 | to | 5899 | 262 337 4000        | to        | 4099        | 262 546 4800 | to | 4899 |
| 251 335 5731        | to        | 5799        | 258 405 5900 | to | 5999 | 262 337 4100        | to        | 4199        | 262 546 4900 | to | 4999 |
| 251 379 2380        | to        | 2399        | 258 405 6000 | to | 6099 | 262 337 4200        | to        | 4299        | 262 546 7100 | to | 7199 |
| 252 005 7626        | to        | 7699        | 258 405 6100 | to | 6199 | 262 337 4300        | to        | 4399        | 262 546 7200 | to | 7299 |
| 252 421 8401        | to        | 8499        | 258 405 6200 | to | 6299 | 262 337 4400        | to        | 4499        | 262 546 7300 | to | 7399 |
| 252 464 2810        | to        | 2899        | 258 405 6300 | to | 6399 | 262 337 4500        | to        | 4599        | 262 546 7400 | to | 7499 |
| 252 612 3683        | to        | 3699        | 258 405 6400 | to | 6499 | 262 337 4600        | to        | 4699        | 262 546 9800 | to | 9899 |
| 252 469 2125        | to        | 2199        | 258 405 6800 | to | 6899 | 262 337 4700        | to        | 4799        | 262 546 9900 | to | 9999 |

|                     |           |             |                     |           |             |                     |           |             |                     |           |             |
|---------------------|-----------|-------------|---------------------|-----------|-------------|---------------------|-----------|-------------|---------------------|-----------|-------------|
| 262 567 1788        | to        | 1799        | 389 696 2400        | to        | 2799        | 410 867 0970        | to        | 0999        | 435 666 6092        | to        | 6399        |
| 263 254 2500        | to        | 2500        | 389 846 3104        | to        | 3135        | 411 868 1023        | to        | 1199        | 436 082 6400        | to        | 6899        |
| 263 340 0000        | to        | 0099        | 389 846 3145        | to        | 3195        | 411 922 2322        | to        | 2399        | 436 160 6441        | to        | 6499        |
| 263 340 0100        | to        | 0199        | 389 887 9211        | to        | 9230        | 412 193 0900        | to        | 0999        | 437 316 7115        | to        | 7199        |
| 263 340 0500        | to        | 0599        | 389 887 9234        | to        | 9299        | 412 395 8599        | to        | 8699        | 437 427 0500        | to        | 3499        |
| 263 340 0600        | to        | 0699        | <b>390 001 3182</b> | <b>to</b> | <b>3199</b> | 412 485 6500        | to        | 6599        | 439 179 2300        | to        | 2399        |
| 263 340 2700        | to        | 2799        | 390 001 3500        | to        | 3699        | 412 485 6610        | to        | 6699        | 439 310 0458        | to        | 0499        |
| 263 340 2800        | to        | 2899        | 390 545 5974        | to        | 5999        | 412 885 5953        | to        | 5999        | <b>440 698 1947</b> | <b>to</b> | <b>1999</b> |
| 263 340 3000        | to        | 3099        | 391 104 6146        | to        | 6199        | 414 193 3608        | to        | 3674        | 440 858 6300        | to        | 6399        |
| 264 341 2360        | to        | 2399        | 391 574 1466        | to        | 1499        | 414 193 3677        | to        | 3699        | 440 858 6420        | to        | 7299        |
| 264 380 4000        | to        | 4099        | 391 783 3020        | to        | 3599        | 414 411 7348        | to        | 7399        | 441 199 1655        | to        | 1699        |
| 264 380 4100        | to        | 4199        | 391 792 6100        | to        | 6199        | 414 640 0757        | to        | 0799        | 443 127 3648        | to        | 3699        |
| 264 799 6049        | to        | 6099        | 392 668 2956        | to        | 2999        | 414 965 1727        | to        | 1799        | 443 127 4000        | to        | 4099        |
| 264 860 7832        | to        | 7868        | 392 854 8500        | to        | 8899        | 417 302 8104        | to        | 8199        | 443 673 7900        | to        | 7999        |
| 265 127 3658        | to        | 3699        | 393 584 7566        | to        | 7699        | 417 887 6532        | to        | 6599        | 443 800 9335        | to        | 9399        |
| 265 380 7111        | to        | 7137        | 393 650 0074        | to        | 0099        | 417 496 6800        | to        | 6999        | 444 382 8822        | to        | 8899        |
| 265 444 4762        | to        | 4799        | 393 838 8316        | to        | 8499        | 417 871 9250        | to        | 9299        | 444 390 1667        | to        | 1699        |
| 265 548 7074        | to        | 7099        | 393 893 6007        | to        | 6099        | 417 930 9533        | to        | 9599        | 444 457 3854        | to        | 3899        |
| 266 106 0000        | to        | 2499        | 394 126 6907        | to        | 6999        | 418 164 6500        | to        | 6799        | <b>450 048 4173</b> | <b>to</b> | <b>4199</b> |
| 266 129 5809        | to        | 5899        | 394 189 0405        | to        | 0599        | 418 423 9863        | to        | 9899        | 450 048 4442        | to        | 4699        |
| 266 673 0000        | to        | 2499        | 394 822 3243        | to        | 3278        | 418 633 5922        | to        | 5999        | 450 560 5173        | to        | 5199        |
| 266 749 7900        | to        | 7999        | 394 990 1810        | to        | 1899        | 418 719 8520        | to        | 8599        | 450 620 3077        | to        | 3099        |
| 266 868 0952        | to        | 0999        | 395 343 3264        | to        | 3299        | 418 744 2235        | to        | 2299        | 450 620 3135        | to        | 3199        |
| 266 868 1028        | to        | 1099        | 395 373 3035        | to        | 3099        | 418 962 2848        | to        | 2899        | 450 780 2716        | to        | 2799        |
| 266 868 1100        | to        | 1199        | 395 396 9649        | to        | 9799        | 419 543 0286        | to        | 0299        | 450 801 2700        | to        | 2799        |
| 266 868 1200        | to        | 1299        | 395 970 3240        | to        | 3299        | 419 730 0300        | to        | 0399        | 451 109 2967        | to        | 2984        |
| 267 296 1237        | to        | 1299        | 397 622 4054        | to        | 4099        | <b>420 277 0015</b> | <b>to</b> | <b>0049</b> | 451 115 4110        | to        | 4125        |
| 267 324 8946        | to        | 8998        | 397 819 8902        | to        | 8999        | 420 599 0734        | to        | 0798        | 451 115 4127        | to        | 4199        |
| 268 072 1203        | to        | 1299        | 398 149 7200        | to        | 7699        | 420 661 4115        | to        | 4199        | 451 746 0700        | to        | 0799        |
| <b>271 660 4333</b> | <b>to</b> | <b>4400</b> | 399 070 0872        | to        | 0899        | 420 758 9500        | to        | 9699        | 452 265 0074        | to        | 0099        |
| 273 520 0000        | to        | 9999        | 399 156 7119        | to        | 7199        | 420 969 3951        | to        | 3971        | 452 265 0246        | to        | 0299        |
| 273 520 6000        | to        | 8999        | 399 203 5064        | to        | 5099        | 420 969 3973        | to        | 3999        | 452 265 0335        | to        | 0999        |
| 273 775 7700        | to        | 7899        | 399 296 9910        | to        | 9999        | 421 116 3565        | to        | 3599        | 452 509 1169        | to        | 1199        |
| 273 882 1913        | to        | 1998        | 399 396 8935        | to        | 8999        | 421 130 9300        | to        | 9399        | 452 855 6471        | to        | 6499        |
| 274 750 0300        | to        | 0400        | 399 792 7775        | to        | 7799        | 421 313 4500        | to        | 4999        | 452 890 4679        | to        | 4799        |
| 274 782 0549        | to        | 0599        | 399 792 8300        | to        | 8399        | 421 364 5537        | to        | 5599        | 452 900 8215        | to        | 8238        |
| 279 517 9330        | to        | 9399        | <b>400 427 1051</b> | <b>to</b> | <b>1999</b> | 421 656 2609        | to        | 2699        | 453 117 9146        | to        | 9199        |
| 279 517 9594        | to        | 9599        | 401 045 1505        | to        | 1549        | 421 988 9700        | to        | 9799        | 453 334 3631        | to        | 3699        |
| 279 517 9623        | to        | 9699        | 401 045 1571        | to        | 1599        | 422 172 4667        | to        | 4699        | 453 603 7841        | to        | 7891        |
| <b>282 667 2500</b> | <b>to</b> | <b>4999</b> | 401 294 2700        | to        | 2799        | 422 484 4212        | to        | 4299        | 453 650 1140        | to        | 1199        |
| <b>302 000 0000</b> | <b>to</b> | <b>9999</b> | 401 310 9505        | to        | 9599        | 422 556 1270        | to        | 1299        | 453 741 1300        | to        | 1399        |
| <b>349 746 2056</b> | <b>to</b> | <b>2099</b> | 401 382 5312        | to        | 5399        | 422 587 7024        | to        | 7099        | 454 013 2919        | to        | 2999        |
| <b>350 518 7350</b> | <b>to</b> | <b>7374</b> | 402 578 7876        | to        | 7899        | 422 819 7533        | to        | 7599        | 454 186 2411        | to        | 2499        |
| <b>360 011 1690</b> | <b>to</b> | <b>1699</b> | 403 125 6744        | to        | 6799        | 422 842 5073        | to        | 5087        | 454 268 4883        | to        | 4899        |
| 360 168 6008        | to        | 6099        | 403 260 7000        | to        | 7499        | 422 907 7563        | to        | 7599        | 454 302 5400        | to        | 5499        |
| 360 173 8800        | to        | 8899        | 403 280 6470        | to        | 6499        | 424 500 6050        | to        | 6099        | 454 490 8300        | to        | 8399        |
| 360 324 2326        | to        | 2399        | 403 685 8600        | to        | 8699        | 424 641 8500        | to        | 8599        | 454 547 7434        | to        | 7499        |
| 362 861 3064        | to        | 3099        | 404 003 0300        | to        | 0399        | 424 871 6600        | to        | 6699        | 454 922 4867        | to        | 4895        |
| <b>373 006 2176</b> | <b>to</b> | <b>2199</b> | 404 041 8838        | to        | 8899        | 425 298 2352        | to        | 2399        | 455 221 1348        | to        | 1499        |
| 374 768 2600        | to        | 2699        | 404 071 4268        | to        | 4299        | 425 418 4269        | to        | 4299        | 455 364 2147        | to        | 2199        |
| 375 169 4400        | to        | 4599        | 404 347 5356        | to        | 5399        | 425 418 4405        | to        | 4499        | 455 399 5400        | to        | 5499        |
| 375 829 3400        | to        | 3499        | 404 347 5548        | to        | 5599        | 426 547 4566        | to        | 4599        | 455 476 0676        | to        | 0699        |
| 375 851 9100        | to        | 9199        | 404 726 4500        | to        | 4599        | 427 412 6337        | to        | 6499        | 455 543 0618        | to        | 0699        |
| 376 196 0911        | to        | 0999        | 404 961 5001        | to        | 5199        | 427 481 0900        | to        | 0999        | 456 410 9006        | to        | 9099        |
| 378 085 3679        | to        | 3699        | 405 325 0188        | to        | 0198        | 428 027 2742        | to        | 2752        | 456 470 4146        | to        | 4299        |
| 378 351 1063        | to        | 1099        | 406 009 4587        | to        | 4599        | 429 474 4172        | to        | 4199        | 456 619 4460        | to        | 4499        |
| 379 843 5100        | to        | 5199        | 406 260 6830        | to        | 6899        | 429 889 2900        | to        | 2999        | 457 333 2686        | to        | 2699        |
| <b>380 093 9600</b> | <b>to</b> | <b>9699</b> | 406 459 6641        | to        | 6999        | <b>430 150 4401</b> | <b>to</b> | <b>4599</b> | 457 729 1767        | to        | 1777        |
| 380 165 1165        | to        | 1199        | 406 733 3000        | to        | 3999        | 430 172 9800        | to        | 9899        | 457 937 8615        | to        | 8699        |
| 381 325 4500        | to        | 4599        | 407 545 1557        | to        | 1599        | 430 177 1900        | to        | 2099        | 458 028 9810        | to        | 9899        |
| 381 604 2510        | to        | 2699        | 407 594 0412        | to        | 0599        | 430 444 9500        | to        | 9699        | 458 057 2712        | to        | 2999        |
| 381 645 9525        | to        | 9599        | 407 692 9100        | to        | 9299        | 430 664 4070        | to        | 4099        | 458 069 9537        | to        | 9599        |
| 383 314 3968        | to        | 3999        | 407 959 2190        | to        | 2199        | 432 168 8419        | to        | 8499        | 458 069 9665        | to        | 9699        |
| 383 892 1000        | to        | 1344        | 408 265 2275        | to        | 2288        | 432 708 6800        | to        | 6999        | 458 337 5222        | to        | 5299        |
| 383 892 1382        | to        | 1399        | 408 499 7700        | to        | 7799        | 432 744 1544        | to        | 1599        | 458 354 7653        | to        | 7999        |
| 384 925 3641        | to        | 3654        | 408 499 7900        | to        | 7999        | 432 995 9775        | to        | 9799        | 458 671 8678        | to        | 8699        |
| 385 568 2331        | to        | 2399        | 408 682 8484        | to        | 8599        | 433 003 5800        | to        | 5899        | 458 671 8721        | to        | 8798        |
| 385 599 7554        | to        | 7575        | 408 698 7015        | to        | 7099        | 433 757 3047        | to        | 3099        | 458 847 5044        | to        | 5999        |
| 385 774 2024        | to        | 2099        | 409 072 3941        | to        | 3999        | 433 765 4003        | to        | 4099        | 459 274 7624        | to        | 7699        |
| 386 624 1412        | to        | 1599        | <b>410 491 2311</b> | <b>to</b> | <b>2399</b> | 434 482 7060        | to        | 7199        | 459 365 5432        | to        | 5499        |
| 386 883 8936        | to        | 8999        | 410 694 8400        | to        | 8599        | 434 513 2386        | to        | 2399        | 459 378 5764        | to        | 5799        |
| 387 314 5574        | to        | 5599        | 410 775 1500        | to        | 1599        | 434 968 3076        | to        | 3092        | 459 472 4816        | to        | 4999        |
| 387 837 6300        | to        | 6399        | 410 795 7927        | to        | 7999        | 435 303 1831        | to        | 1842        | <b>460 349 6878</b> | <b>to</b> | <b>6899</b> |
| 388 828 0656        | to        | 0699        | 410 867 0917        | to        | 0966        | 435 303 1986        | to        | 1999        | 460 550 1909        | to        | 1999        |

|                     |           |             |                     |           |             |                     |           |             |                     |           |             |
|---------------------|-----------|-------------|---------------------|-----------|-------------|---------------------|-----------|-------------|---------------------|-----------|-------------|
| 460 997 5234        | to        | 5299        | 481 072 9463        | to        | 9499        | 504 045 4030        | to        | 4099        | 609 493 1100        | to        | 1199        |
| 461 973 6443        | to        | 6499        | 481 673 0074        | to        | 0095        | 504 166 0200        | to        | 0599        | 609 766 8091        | to        | 8999        |
| 462 152 0107        | to        | 0299        | 482 527 1500        | to        | 1599        | 504 240 1062        | to        | 1399        | 609 825 4100        | to        | 4115        |
| 462 274 1072        | to        | 1099        | 482 541 5255        | to        | 5299        | 504 805 3300        | to        | 3499        | 609 884 2981        | to        | 2999        |
| 462 277 8373        | to        | 8399        | 482 729 6800        | to        | 6899        | 505 096 0662        | to        | 0699        | 609 893 1000        | to        | 1099        |
| 462 554 6051        | to        | 6099        | 483 363 7207        | to        | 7299        | 505 893 7739        | to        | 7799        | <b>610 092 3200</b> | <b>to</b> | <b>3299</b> |
| 463 011 5529        | to        | 5540        | 483 402 2356        | to        | 2399        | 505 893 7800        | to        | 7999        | 610 582 4200        | to        | 4299        |
| 463 176 4115        | to        | 4199        | 483 486 5100        | to        | 5199        | 506 124 0800        | to        | 0999        | 611 879 6939        | to        | 6999        |
| 463 176 4229        | to        | 4299        | 483 632 1521        | to        | 1599        | 506 165 7027        | to        | 0099        | 612 291 8013        | to        | 8099        |
| 463 185 2600        | to        | 2799        | 483 632 2600        | to        | 2799        | 506 502 5209        | to        | 5299        | 612 751 5171        | to        | 5199        |
| 463 227 7711        | to        | 7799        | 483 849 1615        | to        | 1699        | 506 756 1682        | to        | 1699        | 612 751 5226        | to        | 5299        |
| 463 414 4869        | to        | 4899        | 484 174 4803        | to        | 5299        | 506 756 1700        | to        | 1799        | 612 751 6083        | to        | 6099        |
| 463 808 3484        | to        | 3499        | 484 323 8900        | to        | 9199        | 506 756 1800        | to        | 1899        | 612 751 6268        | to        | 6299        |
| 463 945 7400        | to        | 7899        | 484 680 5000        | to        | 5038        | 506 836 5326        | to        | 5399        | 612 751 6572        | to        | 6599        |
| 464 629 9000        | to        | 9399        | 484 680 5040        | to        | 5074        | 508 488 6226        | to        | 6299        | 612 774 2111        | to        | 2199        |
| 464 711 4332        | to        | 4399        | 484 680 5077        | to        | 5099        | 508 789 8332        | to        | 8399        | 612 774 2254        | to        | 2299        |
| 465 692 3963        | to        | 3999        | 485 029 4913        | to        | 4999        | 508 789 8400        | to        | 8499        | 612 774 2500        | to        | 2599        |
| 465 698 8300        | to        | 8599        | 486 176 0600        | to        | 0699        | 509 909 0425        | to        | 0435        | 614 469 0979        | to        | 0999        |
| 465 743 7745        | to        | 7799        | 486 559 7555        | to        | 7599        | <b>510 150 2400</b> | <b>to</b> | <b>2499</b> | 614 474 3000        | to        | 3099        |
| 466 798 6056        | to        | 6067        | 486 696 3023        | to        | 3199        | 510 381 3200        | to        | 3299        | 614 521 3490        | to        | 3499        |
| 467 147 4300        | to        | 4399        | 488 173 7900        | to        | 7999        | 510 587 9500        | to        | 9599        | 614 645 1800        | to        | 1899        |
| 468 079 5782        | to        | 5799        | 488 206 4100        | to        | 4199        | 510 587 9659        | to        | 9699        | 614 832 1100        | to        | 2099        |
| 469 067 2817        | to        | 2899        | 488 226 0200        | to        | 0299        | 510 269 9770        | to        | 9999        | 615 017 7505        | to        | 7599        |
| 469 127 8000        | to        | 8199        | 488 709 3906        | to        | 3999        | 511 021 5042        | to        | 5099        | 617 711 6609        | to        | 6699        |
| 469 213 0359        | to        | 0399        | 488 855 8359        | to        | 8399        | 511 021 5100        | to        | 5199        | 617 760 5266        | to        | 5299        |
| 469 213 0500        | to        | 0599        | 489 181 8963        | to        | 8999        | 511 468 1747        | to        | 1799        | 617 813 3601        | to        | 3699        |
| 469 561 8011        | to        | 8099        | 489 223 2000        | to        | 2099        | 511 844 0100        | to        | 0199        | 618 840 9200        | to        | 9299        |
| 469 658 1961        | to        | 1999        | 489 311 1930        | to        | 1999        | 511 844 0340        | to        | 0399        | 619 551 7229        | to        | 7299        |
| 469 666 9900        | to        | 9999        | 489 318 6200        | to        | 6300        | 512 805 3913        | to        | 3919        | 619 859 3000        | to        | 3099        |
| 469 678 1900        | to        | 1999        | 489 384 0027        | to        | 0099        | 513 046 0700        | to        | 0726        | <b>620 073 9400</b> | <b>to</b> | <b>9499</b> |
| 469 781 4900        | to        | 4999        | 489 427 0658        | to        | 0899        | 513 149 0600        | to        | 0699        | 621 614 7907        | to        | 7930        |
| 469 947 6960        | to        | 6999        | 489 997 5252        | to        | 5299        | 513 445 3000        | to        | 3199        | 621 614 7932        | to        | 7999        |
| <b>470 755 5800</b> | <b>to</b> | <b>5818</b> | <b>490 669 5850</b> | <b>to</b> | <b>6099</b> | 513 466 2034        | to        | 2044        | 621 648 8021        | to        | 8199        |
| 471 918 0300        | to        | 0999        | 490 717 7080        | to        | 7099        | 513 539 9052        | to        | 9099        | 621 648 8500        | to        | 8599        |
| 471 985 2408        | to        | 2419        | 490 721 6000        | to        | 6099        | 513 539 9267        | to        | 9299        | 621 904 8351        | to        | 8599        |
| 472 191 6700        | to        | 6799        | 490 793 1500        | to        | 2099        | 513 539 9800        | to        | 9899        | 621 916 1978        | to        | 1989        |
| 472 270 2555        | to        | 2599        | 490 886 8171        | to        | 8199        | 513 539 9985        | to        | 9999        | 622 989 8032        | to        | 8099        |
| 472 987 0213        | to        | 0241        | 490 977 9221        | to        | 9240        | 513 606 5459        | to        | 5490        | 623 076 9300        | to        | 9399        |
| 472 987 0290        | to        | 0299        | 491 258 8100        | to        | 9099        | 513 812 1751        | to        | 1799        | 623 819 5006        | to        | 5099        |
| 473 151 2069        | to        | 2199        | 491 567 1376        | to        | 1399        | 514 103 3600        | to        | 3699        | 623 895 8200        | to        | 8399        |
| 473 666 9138        | to        | 9199        | 492 254 4800        | to        | 4899        | 514 103 3700        | to        | 3799        | 623 917 0000        | to        | 0099        |
| 473 952 3429        | to        | 3499        | 492 283 5100        | to        | 5199        | 514 103 3800        | to        | 3899        | 623 917 0200        | to        | 0299        |
| 474 108 5402        | to        | 5499        | 492 610 6813        | to        | 6899        | <b>600 645 3223</b> | <b>to</b> | <b>3299</b> | 624 468 5288        | to        | 5299        |
| 474 356 5193        | to        | 5299        | 493 394 5568        | to        | 5599        | 601 339 1200        | to        | 1399        | 624 665 3162        | to        | 3198        |
| 474 949 3366        | to        | 3399        | 493 470 2562        | to        | 2599        | 601 653 5884        | to        | 5899        | 625 088 6735        | to        | 6799        |
| 475 134 9362        | to        | 9399        | 493 473 7700        | to        | 7799        | 601 661 7700        | to        | 7799        | 625 916 9500        | to        | 9799        |
| 475 167 9667        | to        | 9699        | 493 716 2153        | to        | 2199        | 601 682 5343        | to        | 5399        | 625 968 8956        | to        | 8999        |
| 475 319 3415        | to        | 3499        | 494 206 2972        | to        | 2999        | 601 928 1600        | to        | 1699        | 627 005 3938        | to        | 3999        |
| 475 319 3649        | to        | 3799        | 494 217 3446        | to        | 3999        | 602 512 2972        | to        | 2999        | 627 384 3907        | to        | 4099        |
| 475 340 6400        | to        | 6599        | 494 224 0500        | to        | 0599        | 602 555 2400        | to        | 2799        | 627 496 7549        | to        | 7599        |
| 475 424 8410        | to        | 8499        | 495 145 0600        | to        | 0699        | 602 829 7061        | to        | 7099        | 627 708 3605        | to        | 3699        |
| 475 629 9156        | to        | 9199        | 496 209 7425        | to        | 7499        | 603 483 9572        | to        | 9599        | 627 776 2500        | to        | 2599        |
| 475 850 6101        | to        | 6199        | 496 213 8728        | to        | 8799        | 603 490 7200        | to        | 7299        | 628 226 3100        | to        | 3199        |
| 475 875 2500        | to        | 2599        | 496 474 5226        | to        | 5248        | 603 678 7100        | to        | 7199        | 628 814 4702        | to        | 4799        |
| 476 169 8264        | to        | 8299        | 497 053 8517        | to        | 8699        | 603 678 7662        | to        | 7699        | 628 851 9689        | to        | 9699        |
| 476 189 3000        | to        | 3499        | 497 854 8673        | to        | 8699        | 603 678 7902        | to        | 7999        | 629 510 7200        | to        | 7299        |
| 476 331 2480        | to        | 2499        | 498 449 8888        | to        | 8899        | 603 678 8418        | to        | 8499        | 629 964 4200        | to        | 4294        |
| 477 289 8601        | to        | 8699        | 498 929 8285        | to        | 8499        | 603 678 8700        | to        | 9999        | <b>630 389 3056</b> | <b>to</b> | <b>3071</b> |
| 477 681 5206        | to        | 5299        | 498 936 5310        | to        | 5399        | 604 086 0880        | to        | 0899        | 630 463 0588        | to        | 0599        |
| 478 010 4243        | to        | 4268        | 499 016 5425        | to        | 5499        | 604 349 1414        | to        | 1499        | 631 459 9117        | to        | 9199        |
| 478 010 4270        | to        | 4291        | 499 440 8575        | to        | 8899        | 604 503 7776        | to        | 7799        | 631 762 9325        | to        | 9399        |
| 478 450 5071        | to        | 5099        | 499 731 6717        | to        | 6799        | 605 520 9037        | to        | 9099        | 632 217 4933        | to        | 4999        |
| 478 469 7838        | to        | 7858        | <b>500 064 1858</b> | <b>to</b> | <b>1869</b> | 605 685 4010        | to        | 4099        | 632 500 0000        | to        | 640 3999    |
| 478 469 7883        | to        | 7899        | 500 070 5725        | to        | 7799        | 605 988 6467        | to        | 6499        | 633 110 4165        | to        | 4199        |
| 479 280 9800        | to        | 9899        | 501 058 0016        | to        | 0026        | 607 689 7951        | to        | 7960        | 633 110 4303        | to        | 4499        |
| 479 365 9116        | to        | 9176        | 501 331 0300        | to        | 0399        | 607 728 1276        | to        | 1299        | 633 438 6429        | to        | 6599        |
| 479 412 9900        | to        | 9999        | 501 460 0977        | to        | 0999        | 608 727 7100        | to        | 7199        | 633 588 7173        | to        | 7182        |
| 479 667 6190        | to        | 6199        | 502 227 7645        | to        | 7699        | 608 727 7273        | to        | 7599        | 634 725 0700        | to        | 0799        |
| 479 748 9680        | to        | 9699        | 502 424 0200        | to        | 0499        | 608 813 9950        | to        | 9999        | 634 803 3239        | to        | 3299        |
| 479 860 7000        | to        | 7199        | 502 424 0600        | to        | 0699        | 609 067 5325        | to        | 5399        | 634 807 2474        | to        | 2499        |
| <b>480 526 2000</b> | <b>to</b> | <b>2099</b> | 502 496 6923        | to        | 6999        | 609 067 5488        | to        | 5499        | 634 827 5900        | to        | 5999        |
| 480 640 6330        | to        | 6399        | 503 003 2700        | to        | 2899        | 609 067 5600        | to        | 5699        | 634 886 3428        | to        | 3499        |
| 480 658 0568        | to        | 0599        | 503 194 5144        | to        | 5153        | 609 289 6123        | to        | 6199        | 635 559 3449        | to        | 3499        |
| 480 689 5100        | to        | 5199        | 503 790 9922        | to        | 9948        | 609 438 4400        | to        | 4499        | 636 289 6214        | to        | 6299        |

|                     |           |             |                     |           |             |                     |           |             |                     |           |             |
|---------------------|-----------|-------------|---------------------|-----------|-------------|---------------------|-----------|-------------|---------------------|-----------|-------------|
| 636 634 8007        | to        | 8042        | 651 882 2800        | to        | 2899        | 683 118 2389        | to        | 2399        | 701 838 2800        | to        | 2899        |
| 637 150 1200        | to        | 1299        | 652 754 6317        | to        | 6399        | 683 378 2000        | to        | 2099        | 701 941 0600        | to        | 0699        |
| 637 562 5828        | to        | 5899        | 653 131 4945        | to        | 4999        | 683 378 2117        | to        | 2299        | 702 171 1603        | to        | 1699        |
| 638 042 1647        | to        | 1699        | 653 426 3300        | to        | 3399        | 683 415 1200        | to        | 1499        | 702 195 5109        | to        | 5199        |
| 638 049 4984        | to        | 4999        | 653 455 4874        | to        | 4899        | 683 444 8159        | to        | 8199        | 702 254 9300        | to        | 9399        |
| 638 318 1115        | to        | 1199        | 654 238 0000        | to        | 0399        | 685 154 7780        | to        | 7789        | 702 264 7569        | to        | 7599        |
| 638 318 1453        | to        | 1499        | 654 404 3065        | to        | 3092        | 685 297 7645        | to        | 7699        | 702 519 0513        | to        | 0524        |
| 638 885 0000        | to        | 0299        | 654 962 2900        | to        | 3199        | 685 623 5264        | to        | 5299        | 702 713 1800        | to        | 1809        |
| 638 903 4362        | to        | 4373        | 655 103 5081        | to        | 5199        | 685 650 9487        | to        | 9499        | 702 821 5730        | to        | 5799        |
| 639 415 1929        | to        | 1999        | 655 523 2600        | to        | 2999        | 685 669 4200        | to        | 4299        | 702 821 5805        | to        | 5899        |
| 639 415 2019        | to        | 2099        | 656 305 2448        | to        | 2499        | 685 757 8452        | to        | 8499        | 702 844 6975        | to        | 6994        |
| 639 420 6200        | to        | 6299        | 657 347 4438        | to        | 4999        | 686 071 2694        | to        | 2799        | 702 846 6331        | to        | 6399        |
| 639 469 3517        | to        | 3799        | 657 710 8100        | to        | 8999        | 686 176 3333        | to        | 3354        | 702 848 3900        | to        | 3999        |
| 639 605 2143        | to        | 2199        | 657 780 0985        | to        | 0999        | 686 372 3200        | to        | 3299        | 702 857 7302        | to        | 7499        |
| 639 657 8600        | to        | 8799        | 658 586 1400        | to        | 1499        | 686 644 5879        | to        | 5899        | 702 878 0114        | to        | 0199        |
| <b>640 289 7500</b> | <b>to</b> | <b>7599</b> | 658 877 8000        | to        | 8199        | 686 899 1371        | to        | 1399        | 703 364 1707        | to        | 1799        |
| 640 289 7700        | to        | 7999        | 658 880 8000        | to        | 8199        | 686 931 7636        | to        | 7699        | <b>740 002 7710</b> | <b>to</b> | <b>7719</b> |
| 641 170 4420        | to        | 4499        | 659 398 7300        | to        | 7399        | 687 601 0973        | to        | 0999        | 740 037 6730        | to        | 6800        |
| 641 318 3133        | to        | 3199        | 659 706 8113        | to        | 8199        | 687 614 6774        | to        | 6799        | 740 119 2275        | to        | 2284        |
| 641 378 6500        | to        | 6999        | 659 846 7837        | to        | 7899        | 688 120 9000        | to        | 9999        | 740 130 6688        | to        | 6698        |
| 641 383 8739        | to        | 8799        | <b>660 510 4100</b> | <b>to</b> | <b>4199</b> | 688 314 3107        | to        | 3191        | 740 144 2780        | to        | 2795        |
| 641 877 3187        | to        | 3299        | 660 673 0400        | to        | 0599        | <b>690 291 1361</b> | <b>to</b> | <b>1371</b> | 740 241 9049        | to        | 9099        |
| 641 877 3310        | to        | 3399        | 661 488 5000        | to        | 5099        | 690 788 2877        | to        | 2899        | 740 252 9265        | to        | 9294        |
| 642 355 8094        | to        | 8199        | 661 609 9100        | to        | 9199        | 690 893 5344        | to        | 5399        | 740 255 1718        | to        | 1799        |
| 642 355 8308        | to        | 8999        | 661 716 9420        | to        | 9499        | 690 893 5512        | to        | 5599        | 740 274 2602        | to        | 2619        |
| 642 900 0018        | to        | 0099        | 661 906 6522        | to        | 6599        | 690 904 1300        | to        | 1599        | 740 277 0366        | to        | 0392        |
| 643 030 6254        | to        | 6299        | 662 021 8332        | to        | 8399        | 690 941 6000        | to        | 6199        | 740 332 7658        | to        | 7671        |
| 644 066 0882        | to        | 0899        | 662 068 0700        | to        | 0899        | 691 313 6383        | to        | 6399        | 740 348 6641        | to        | 6658        |
| 644 069 0600        | to        | 0699        | 662 553 0774        | to        | 0799        | 691 313 6600        | to        | 6699        | 740 351 4790        | to        | 4799        |
| 644 077 7506        | to        | 7699        | 663 078 7034        | to        | 7099        | 691 582 8003        | to        | 8099        | 740 374 7416        | to        | 7499        |
| 644 085 8157        | to        | 8199        | 663 763 5300        | to        | 5399        | 691 664 1800        | to        | 1999        | 740 470 2420        | to        | 2443        |
| 644 112 9839        | to        | 9899        | 663 883 7039        | to        | 7499        | 691 664 2400        | to        | 2499        | 740 514 0300        | to        | 0499        |
| 644 373 9083        | to        | 9099        | 663 938 9200        | to        | 9299        | 692 727 9362        | to        | 9399        | 740 523 7432        | to        | 7449        |
| 644 380 1460        | to        | 1499        | 664 253 8000        | to        | 8499        | 692 798 1800        | to        | 1899        | 740 535 1555        | to        | 1580        |
| 644 733 4715        | to        | 4799        | 664 656 3055        | to        | 3099        | 693 249 0779        | to        | 0799        | 740 557 3570        | to        | 3579        |
| 644 900 9712        | to        | 9799        | 665 174 6400        | to        | 6499        | 693 249 0877        | to        | 1699        | 740 650 4104        | to        | 4140        |
| 644 901 0109        | to        | 1299        | 665 274 8208        | to        | 8299        | 693 445 0566        | to        | 0999        | 740 684 0620        | to        | 0800        |
| 644 901 1325        | to        | 1399        | 666 669 5400        | to        | 5499        | 693 448 8500        | to        | 8999        | 740 701 6105        | to        | 6114        |
| 644 923 6800        | to        | 7799        | 666 132 8226        | to        | 8299        | 693 645 9583        | to        | 9599        | 740 705 9790        | to        | 9799        |
| 644 932 4655        | to        | 4699        | 666 696 2209        | to        | 2299        | 693 965 4200        | to        | 4299        | 740 726 6400        | to        | 6500        |
| 645 318 7240        | to        | 7499        | 666 696 2309        | to        | 2399        | 695 741 2906        | to        | 2999        | 740 748 8319        | to        | 8329        |
| 645 333 1766        | to        | 1799        | 667 032 9300        | to        | 9399        | 695 947 8518        | to        | 8599        | 740 765 3306        | to        | 3399        |
| 645 790 8632        | to        | 8699        | 667 729 5529        | to        | 5599        | 696 662 8247        | to        | 8299        | 740 774 8434        | to        | 8499        |
| 645 821 0657        | to        | 0699        | 668 383 8400        | to        | 8699        | 697 447 8285        | to        | 8296        | 740 779 4259        | to        | 4299        |
| 645 930 7948        | to        | 7999        | <b>670 368 3400</b> | <b>to</b> | <b>3499</b> | 698 042 4816        | to        | 4899        | 740 786 1885        | to        | 1899        |
| 645 975 0737        | to        | 0762        | 670 369 7336        | to        | 7399        | 698 131 2138        | to        | 2157        | 740 790 5989        | to        | 5999        |
| 646 242 6200        | to        | 6299        | 670 750 7169        | to        | 7199        | 698 227 0000        | to        | 0099        | 740 803 4870        | to        | 4879        |
| 646 270 7639        | to        | 7799        | 671 046 6200        | to        | 6399        | <b>700 065 2570</b> | <b>to</b> | <b>2599</b> | 740 820 4854        | to        | 7836        |
| 646 798 4000        | to        | 4999        | 671 251 5448        | to        | 5499        | 700 065 4800        | to        | 4899        | 740 827 7578        | to        | 7594        |
| 647 048 7035        | to        | 7099        | 671 926 5600        | to        | 5799        | 700 190 3350        | to        | 3359        | 740 917 7490        | to        | 7499        |
| 647 049 2900        | to        | 2999        | 672 444 2000        | to        | 2999        | 700 228 6048        | to        | 6099        | 740 918 5531        | to        | 5549        |
| 647 398 8300        | to        | 8399        | 672 828 3410        | to        | 3499        | 700 650 0452        | to        | 0499        | 741 037 8528        | to        | 8551        |
| 647 398 8481        | to        | 8499        | 673 167 5776        | to        | 5799        | 700 666 1323        | to        | 1349        | 742 030 6135        | to        | 6149        |
| 647 437 3000        | to        | 4999        | 675 464 3700        | to        | 3799        | 700 786 9106        | to        | 9142        | 742 033 2663        | to        | 2674        |
| 647 811 2188        | to        | 2199        | 675 464 4000        | to        | 4199        | 700 859 0744        | to        | 0758        | 742 040 3300        | to        | 3309        |
| 648 009 6057        | to        | 6099        | 676 365 5958        | to        | 5999        | 701 028 6780        | to        | 6899        | 742 112 8155        | to        | 8199        |
| 648 163 5300        | to        | 5499        | 676 669 1024        | to        | 1099        | 701 213 3900        | to        | 3999        | 742 151 5000        | to        | 5014        |
| 648 722 5283        | to        | 5299        | 677 126 6734        | to        | 6799        | 701 267 2000        | to        | 3999        | 742 191 4640        | to        | 4649        |
| 648 892 3164        | to        | 3199        | 677 333 9979        | to        | 9999        | 701 335 7312        | to        | 7399        | 742 192 5210        | to        | 5224        |
| 649 100 3989        | to        | 3999        | 677 466 1088        | to        | 1099        | 701 369 2005        | to        | 2050        | 742 222 9200        | to        | 9210        |
| 649 647 0370        | to        | 0399        | 678 071 4500        | to        | 4799        | 701 499 2260        | to        | 2299        | 742 228 9660        | to        | 9669        |
| 649 647 0522        | to        | 0599        | 678 096 7531        | to        | 7599        | 701 503 2247        | to        | 2299        | 742 247 6980        | to        | 6989        |
| 649 647 5237        | to        | 5399        | 679 909 2578        | to        | 2599        | 701 541 2271        | to        | 2299        | 742 290 0936        | to        | 0950        |
| 649 647 9100        | to        | 9299        | <b>680 112 9565</b> | <b>to</b> | <b>9599</b> | 701 553 6557        | to        | 6599        | 742 302 7600        | to        | 7699        |
| 649 666 7800        | to        | 8299        | 680 244 0903        | to        | 0999        | 701 578 7460        | to        | 7469        | 742 305 3711        | to        | 3799        |
| <b>650 114 7707</b> | <b>to</b> | <b>7719</b> | 680 412 6046        | to        | 6099        | 701 578 7475        | to        | 7499        | 742 305 3800        | to        | 3899        |
| 650 130 3400        | to        | 3599        | 680 761 6800        | to        | 6899        | 701 601 3457        | to        | 3499        | 742 305 3900        | to        | 3999        |
| 650 213 0406        | to        | 0499        | 681 677 0540        | to        | 0699        | 701 605 5913        | to        | 5999        | 742 305 4000        | to        | 4099        |
| 650 555 1749        | to        | 1799        | 682 070 1029        | to        | 1099        | 701 695 3982        | to        | 3999        | 742 305 4100        | to        | 4199        |
| 650 564 1900        | to        | 1999        | 682 956 6280        | to        | 6299        | 701 695 4148        | to        | 4199        | <b>805 885 8411</b> | <b>to</b> | <b>8499</b> |
| 650 627 4212        | to        | 4299        | 682 956 6490        | to        | 6599        | 701 695 4227        | to        | 4299        | 806 087 1100        | to        | 1499        |
| 650 736 2043        | to        | 2099        | 682 956 6700        | to        | 6799        | 701 708 1741        | to        | 1799        | 806 268 9275        | to        | 9299        |
| 650 739 1540        | to        | 1699        | 682 965 1178        | to        | 1199        | 701 736 3966        | to        | 3999        | 806 534 3400        | to        | 3477        |
| 651 741 4415        | to        | 4499        | 682 965 1201        | to        | 1299        | 701 772 0870        | to        | 0899        | 807 342 3283        | to        | 3399        |

|                     |           |             |                     |           |             |                     |           |             |                     |           |             |
|---------------------|-----------|-------------|---------------------|-----------|-------------|---------------------|-----------|-------------|---------------------|-----------|-------------|
| 808 086 7100        | to        | 7199        | 855 361 3390        | to        | 3399        | 902 198 9769        | to        | 9799        | 918 460 0602        | to        | 0699        |
| 808 090 3440        | to        | 3499        | 856 226 0490        | to        | 0499        | 902 948 1269        | to        | 1299        | 918 951 7231        | to        | 7299        |
| 808 325 5161        | to        | 5699        | 856 656 5800        | to        | 5999        | 902 985 0833        | to        | 0899        | 919 519 2786        | to        | 2799        |
| 808 784 8000        | to        | 8299        | 856 752 0200        | to        | 0299        | 903 370 6934        | to        | 6999        | 919 536 0770        | to        | 0799        |
| <b>830 125 0672</b> | <b>to</b> | <b>0699</b> | 857 111 1352        | to        | 1399        | 904 600 6523        | to        | 6599        | 919 814 3095        | to        | 3199        |
| 830 602 5800        | to        | 5999        | 857 279 3450        | to        | 3499        | 904 892 0378        | to        | 0399        | 919 889 5110        | to        | 5134        |
| 830 610 3700        | to        | 3799        | 857 843 4000        | to        | 4099        | 904 892 0648        | to        | 1299        | 919 889 5137        | to        | 5176        |
| 830 983 3500        | to        | 3599        | 858 124 7644        | to        | 7699        | 905 056 2216        | to        | 2299        | 919 889 5178        | to        | 5199        |
| 830 983 3635        | to        | 3699        | 858 756 3111        | to        | 3299        | 905 510 6647        | to        | 6799        | 919 889 5030        | to        | 5070        |
| 831 354 1387        | to        | 1399        | 859 063 8200        | to        | 8699        | 905 510 6900        | to        | 7099        | 919 889 5090        | to        | 5099        |
| 831 815 8240        | to        | 8299        | 859 190 0600        | to        | 0644        | 905 794 0000        | to        | 0199        | 919 915 2774        | to        | 2787        |
| 832 525 3810        | to        | 3899        | 859 437 5538        | to        | 5599        | 905 794 0288        | to        | 0299        | <b>920 155 4662</b> | <b>to</b> | <b>4687</b> |
| 833 159 1884        | to        | 1899        | 859 811 2888        | to        | 2899        | 905 873 6900        | to        | 6999        | 920 309 9039        | to        | 9199        |
| 833 456 2567        | to        | 2599        | 859 855 8873        | to        | 8999        | 905 873 7100        | to        | 7299        | 920 771 5321        | to        | 5399        |
| 833 566 3015        | to        | 3071        | <b>860 240 8520</b> | <b>to</b> | <b>8599</b> | 905 880 8900        | to        | 8999        | 920 857 5500        | to        | 8899        |
| 834 130 5200        | to        | 5299        | 860 275 3900        | to        | 3999        | 905 889 7100        | to        | 7199        | 920 864 3480        | to        | 3499        |
| 834 316 5444        | to        | 5499        | 860 518 9629        | to        | 9699        | 906 158 1508        | to        | 1599        | 920 963 4567        | to        | 4599        |
| 834 354 8747        | to        | 8766        | 860 600 0021        | to        | 0999        | 906 558 8812        | to        | 8899        | 921 333 7400        | to        | 7499        |
| 834 354 8824        | to        | 8838        | 861 158 2350        | to        | 2599        | 906 882 2214        | to        | 2299        | 921 477 3762        | to        | 3799        |
| 835 269 5700        | to        | 5799        | 861 367 5400        | to        | 5499        | 907 725 8500        | to        | 8599        | 922 278 1048        | to        | 1399        |
| 835 496 7303        | to        | 7399        | 861 637 6010        | to        | 6099        | 907 815 0216        | to        | 0257        | 922 280 2019        | to        | 2099        |
| 835 539 5200        | to        | 5999        | 861 979 7292        | to        | 7499        | 908 622 4225        | to        | 4235        | 922 280 2233        | to        | 2299        |
| 835 813 3015        | to        | 3099        | 862 216 6100        | to        | 6199        | 908 936 9254        | to        | 9299        | 922 773 0459        | to        | 0499        |
| 837 672 8967        | to        | 8999        | 862 263 9213        | to        | 9299        | 909 066 4494        | to        | 7499        | 923 032 7000        | to        | 7399        |
| 837 784 3282        | to        | 3299        | 862 271 0800        | to        | 0999        | 909 067 7400        | to        | 7499        | 923 045 3630        | to        | 3699        |
| 838 176 8377        | to        | 8399        | 862 271 5000        | to        | 5099        | 909 100 1787        | to        | 1799        | 923 484 3600        | to        | 3699        |
| 838 518 1257        | to        | 1299        | 863 871 5138        | to        | 5199        | 909 100 1900        | to        | 2099        | 923 493 9403        | to        | 9599        |
| 839 718 8257        | to        | 8299        | 863 949 5300        | to        | 5399        | 909 355 0422        | to        | 0499        | 923 493 9681        | to        | 9699        |
| <b>840 323 0600</b> | <b>to</b> | <b>0699</b> | 864 088 8200        | to        | 8299        | 909 568 8900        | to        | 9099        | 923 604 4424        | to        | 4499        |
| 840 875 6235        | to        | 6299        | 864 426 3972        | to        | 3999        | 909 568 9300        | to        | 9499        | 923 810 7800        | to        | 8299        |
| 840 910 0900        | to        | 0999        | 864 520 6117        | to        | 6136        | 909 725 7307        | to        | 7399        | 924 252 1200        | to        | 1299        |
| 841 349 5000        | to        | 5099        | 865 151 0526        | to        | 0599        | 909 833 0947        | to        | 0999        | 924 252 1400        | to        | 1499        |
| 841 805 7747        | to        | 7899        | 865 500 4034        | to        | 4099        | <b>910 219 8631</b> | <b>to</b> | <b>8699</b> | 924 533 0711        | to        | 0799        |
| 841 805 7944        | to        | 8099        | 865 883 6082        | to        | 6099        | 910 265 1100        | to        | 1199        | 924 533 2343        | to        | 2399        |
| 842 226 0685        | to        | 0695        | 866 004 3000        | to        | 3999        | 910 471 7273        | to        | 7299        | 924 533 2428        | to        | 2499        |
| 842 685 4600        | to        | 4699        | 866 442 4100        | to        | 4899        | 910 536 2505        | to        | 2599        | 924 685 1957        | to        | 1999        |
| 842 685 4742        | to        | 4999        | 867 366 9108        | to        | 9118        | 910 958 7499        | to        | 7599        | 924 946 6300        | to        | 6699        |
| 842 860 0300        | to        | 0399        | 867 633 7403        | to        | 7499        | 911 140 1000        | to        | 2199        | 925 333 5900        | to        | 6099        |
| 842 898 5582        | to        | 5599        | 867 737 5623        | to        | 5699        | 911 245 2545        | to        | 2599        | 925 336 2300        | to        | 2399        |
| 843 062 7100        | to        | 7199        | 868 169 4529        | to        | 4599        | 911 268 9077        | to        | 9099        | 926 432 5907        | to        | 5999        |
| 843 077 6288        | to        | 6299        | 868 173 8400        | to        | 8599        | 911 400 8948        | to        | 8999        | 926 436 3600        | to        | 3699        |
| 843 077 6378        | to        | 6399        | 868 514 9000        | to        | 9099        | 911 508 1620        | to        | 1799        | 927 765 6257        | to        | 6299        |
| 843 758 5769        | to        | 5778        | 868 566 9200        | to        | 9299        | 911 509 9310        | to        | 9399        | 928 197 8100        | to        | 8199        |
| 843 786 2554        | to        | 2699        | 869 200 0000        | to        | 9999        | 911 523 3000        | to        | 3999        | 928 197 8283        | to        | 8299        |
| 845 656 8165        | to        | 8199        | 869 387 1150        | to        | 1199        | 912 057 9922        | to        | 9999        | 928 856 2059        | to        | 2068        |
| 845 727 2100        | to        | 2199        | 869 505 3500        | to        | 3599        | 912 882 0563        | to        | 0899        | <b>930 078 5800</b> | <b>to</b> | <b>5899</b> |
| 845 746 2618        | to        | 2635        | 869 523 7033        | to        | 7099        | 913 605 2218        | to        | 2299        | 930 219 1722        | to        | 1799        |
| 846 390 7531        | to        | 7599        | 869 566 6150        | to        | 6167        | 913 709 2429        | to        | 2499        | 930 335 7810        | to        | 7819        |
| 846 918 0572        | to        | 0599        | 869 776 8785        | to        | 8786        | 913 818 3501        | to        | 3999        | 931 097 9259        | to        | 9299        |
| 847 237 7690        | to        | 7699        | 869 800 0000        | to        | 9999        | 914 063 4300        | to        | 4399        | 931 156 1502        | to        | 1579        |
| 847 284 2481        | to        | 2499        | <b>870 054 4814</b> | <b>to</b> | <b>4899</b> | 914 346 7621        | to        | 7644        | 931 156 1600        | to        | 1625        |
| 847 374 7055        | to        | 7065        | 870 491 4812        | to        | 4849        | 914 453 1366        | to        | 1399        | 931 156 1671        | to        | 1699        |
| 847 374 7055        | to        | 7065        | 870 536 5820        | to        | 5829        | 914 529 6185        | to        | 6299        | 932 506 6400        | to        | 6599        |
| 847 636 5304        | to        | 5399        | 870 541 7167        | to        | 7239        | 914 896 4658        | to        | 4699        | 932 732 1796        | to        | 1799        |
| 847 700 5447        | to        | 5499        | 870 575 8155        | to        | 8999        | 915 187 8774        | to        | 8779        | 932 827 9026        | to        | 9099        |
| 847 723 7500        | to        | 7599        | 870 589 0485        | to        | 0494        | 915 300 2783        | to        | 2799        | 932 957 2300        | to        | 2399        |
| 849 485 3427        | to        | 3499        | 870 691 7060        | to        | 7099        | 915 546 6822        | to        | 6999        | 933 060 6160        | to        | 6189        |
| 849 520 9850        | to        | 9899        | 872 028 4850        | to        | 4899        | 915 646 5183        | to        | 5199        | 933 387 2541        | to        | 2561        |
| 849 608 1357        | to        | 1399        | 872 029 9306        | to        | 9399        | 915 671 3963        | to        | 3980        | 933 760 3609        | to        | 4199        |
| 849 792 2600        | to        | 2699        | 872 078 3709        | to        | 3799        | 915 671 3982        | to        | 3999        | 933 894 0928        | to        | 0999        |
| <b>850 546 1862</b> | <b>to</b> | <b>1899</b> | 872 100 0445        | to        | 0459        | 915 675 2217        | to        | 2299        | 934 018 2729        | to        | 2741        |
| 851 143 6826        | to        | 6844        | <b>900 556 4178</b> | <b>to</b> | <b>4199</b> | 916 440 3377        | to        | 3399        | 934 180 0300        | to        | 0399        |
| 851 209 9880        | to        | 9899        | 900 845 0044        | to        | 0099        | 916 670 6352        | to        | 6399        | 934 236 3954        | to        | 3999        |
| 851 928 9221        | to        | 9299        | 900 936 0217        | to        | 0299        | 916 682 5300        | to        | 5399        | 934 622 8717        | to        | 8999        |
| 852 589 6560        | to        | 6599        | 900 936 0435        | to        | 0499        | 916 694 1414        | to        | 1499        | 935 216 0312        | to        | 0399        |
| 853 049 3646        | to        | 3699        | 901 058 5255        | to        | 5280        | 916 703 0802        | to        | 0821        | 935 843 2202        | to        | 2247        |
| 854 304 4089        | to        | 4999        | 901 273 1082        | to        | 1099        | 917 089 0709        | to        | 0799        | 936 024 8889        | to        | 8899        |
| 854 529 2200        | to        | 2299        | 901 287 5143        | to        | 5199        | 917 089 0842        | to        | 0899        | 936 339 4455        | to        | 4499        |
| 854 532 0000        | to        | 2999        | 901 291 2789        | to        | 2799        | 917 216 2928        | to        | 2999        |                     |           |             |
| 855 001 6204        | to        | 6249        | 901 525 7122        | to        | 7199        | 917 370 6300        | to        | 6499        |                     |           |             |
| 855 319 9364        | to        | 9399        | 902 089 1253        | to        | 1299        | 917 486 4900        | to        | 4999        |                     |           |             |

## Missing, Lost, or Stolen Canadian Money Order Forms

**Do Not Cash — Upon Receipt, Notify Local Postal Inspectors**

Provide this listing to all Postal Service™ employees responsible for accepting and cashing postal money orders. Destroy all interim notices when the numbers listed appear in the *Postal Bulletin*. The new money order serial

numbers consist of the first 9 digits. The tenth digit is a check digit only.

Do not cash outdated money orders **104 151 601 to 692 600 000**. Advise holders to send invalid money orders to Canada Post Corporation, Ottawa, Canada K1A 0B1. Check for altered dollar amounts by holding money orders to the light.

|                    |           |              |                    |           |              |                    |           |              |                    |           |              |
|--------------------|-----------|--------------|--------------------|-----------|--------------|--------------------|-----------|--------------|--------------------|-----------|--------------|
| 719 869 731        | to        | 9 760        | 728 702 338        | to        | 2 400        | 734 950 111        | to        | 0 170        | 742 325 668        | to        | 5 700        |
| <b>720 227 871</b> | <b>to</b> | <b>7 930</b> | 728 915 371        | to        | 5 850        | 735 120 331        | to        | 0 840        | 742 408 771        | to        | 8 830        |
| 720 227 949        | to        | 7 960        | 728 953 141        | to        | 3 410        | 735 283 008        | to        | 3 020        | 742 512 120        | to        | 2 150        |
| 720 368 543        | to        | 8 570        | 728 954 280        | to        | 4 310        | 735 293 131        | to        | 3 220        | 742 684 849        | to        | 4 890        |
| 720 392 151        | to        | 2 570        | 729 169 081        | to        | 9 140        | 735 635 010        | to        | 5 040        | 742 839 553        | to        | 9 630        |
| 720 556 491        | to        | 6 640        | 729 363 841        | to        | 3 870        | 735 783 961        | to        | 3 990        | 742 913 668        | to        | 3 700        |
| 720 558 621        | to        | 8 650        | 729 682 891        | to        | 3 190        | 735 803 401        | to        | 3 430        | 742 917 287        | to        | 7 296        |
| 720 575 361        | to        | 5 570        | 729 838 940        | to        | 9 070        | 736 005 420        | to        | 5 440        | 742 921 891        | to        | 1 980        |
| 720 590 152        | to        | 0 179        | 729 839 101        | to        | 9 130        | 736 366 021        | to        | 6 110        | 742 983 631        | to        | 3 810        |
| 721 638 331        | to        | 9 170        | <b>730 077 683</b> | <b>to</b> | <b>7 840</b> | 736 624 456        | to        | 4 500        | 743 020 021        | to        | 0 170        |
| 721 815 391        | to        | 5 420        | 730 109 847        | to        | 9 880        | 736 670 851        | to        | 1 060        | 743 206 491        | to        | 6 500        |
| 721 969 713        | to        | 9 740        | 730 373 761        | to        | 3 850        | 736 767 061        | to        | 7 090        | 743 235 992        | to        | 6 050        |
| 722 072 137        | to        | 2 160        | 730 501 951        | to        | 2 130        | 736 767 093        | to        | 7 120        | 743 940 631        | to        | 0 900        |
| 722 378 265        | to        | 8 280        | 730 519 379        | to        | 9 470        | 736 982 191        | to        | 2 370        | 743 978 011        | to        | 8 070        |
| 722 413 990        | to        | 4 004        | 730 569 278        | to        | 9 360        | 736 982 551        | to        | 2 730        | 744 234 751        | to        | 4 780        |
| 722 764 948        | to        | 4 980        | 730 711 711        | to        | 1 740        | 737 110 141        | to        | 0 170        | 744 499 591        | to        | 9 680        |
| 722 825 840        | to        | 5 889        | 730 722 991        | to        | 3 230        | 737 185 501        | to        | 5 710        | 744 626 901        | to        | 6 910        |
| 723 153 841        | to        | 3 850        | 730 845 970        | to        | 5 990        | 737 317 321        | to        | 7 350        | 745 388 794        | to        | 8 910        |
| 723 237 616        | to        | 7 630        | 730 888 291        | to        | 8 320        | 737 517 781        | to        | 7 840        | 746 446 806        | to        | 6 820        |
| 723 331 081        | to        | 1 110        | 730 927 591        | to        | 7 680        | 737 628 181        | to        | 8 210        | 746 818 351        | to        | 8 410        |
| 723 496 443        | to        | 6 470        | 731 307 914        | to        | 7 930        | 737 634 258        | to        | 4 270        | 747 245 266        | to        | 5 280        |
| 723 967 291        | to        | 7 320        | 731 402 431        | to        | 2 460        | 738 361 971        | to        | 1 980        | 747 364 813        | to        | 4 830        |
| 724 655 196        | to        | 5 340        | 731 407 232        | to        | 7 320        | 738 447 601        | to        | 7 660        | 747 501 434        | to        | 1 450        |
| 724 711 441        | to        | 1 500        | 731 588 301        | to        | 8 340        | 738 648 355        | to        | 8 450        | 747 739 891        | to        | 0 070        |
| 724 711 538        | to        | 1 560        | 731 767 273        | to        | 7 320        | 738 849 811        | to        | 9 900        | 748 148 649        | to        | 8 760        |
| 724 793 221        | to        | 3 250        | 731 781 061        | to        | 1 120        | 738 892 270        | to        | 2 290        | 748 259 960        | to        | 9 970        |
| 724 908 109        | to        | 8 120        | 731 837 821        | to        | 7 910        | 738 997 259        | to        | 7 380        | 748 565 162        | to        | 5 280        |
| 724 937 461        | to        | 7 670        | 731 841 377        | to        | 1 450        | 739 161 451        | to        | 1 540        | 748 874 988        | to        | 5 030        |
| 725 163 118        | to        | 3 151        | 732 018 481        | to        | 8 600        | 739 219 381        | to        | 9 440        | 749 137 381        | to        | 7 410        |
| 725 202 735        | to        | 2 750        | 732 067 972        | to        | 8 370        | 739 740 151        | to        | 0 180        | 749 190 192        | to        | 0 210        |
| 725 398 591        | to        | 8 800        | 732 188 649        | to        | 8 670        | 739 793 491        | to        | 3 520        | 749 685 421        | to        | 5 450        |
| 725 464 591        | to        | 4 920        | 732 193 460        | to        | 3 470        | 739 793 527        | to        | 3 550        | 749 846 791        | to        | 6 850        |
| 725 475 321        | to        | 5 330        | 732 201 241        | to        | 1 390        | 739 942 621        | to        | 2 650        | 749 993 131        | to        | 3 580        |
| 725 711 057        | to        | 1 070        | 732 220 431        | to        | 0 440        | 739 999 231        | to        | 9 320        | <b>750 071 587</b> | <b>to</b> | <b>1 610</b> |
| 725 738 581        | to        | 8 730        | 732 355 201        | to        | 5 380        | <b>740 011 517</b> | <b>to</b> | <b>1 530</b> | 750 408 167        | to        | 8 183        |
| 725 981 311        | to        | 1 430        | 732 472 320        | to        | 2 560        | 740 030 701        | to        | 0 970        | 750 438 421        | to        | 8 501        |
| 725 987 835        | to        | 7 880        | 732 541 605        | to        | 1 620        | 740 261 740        | to        | 1 820        | 750 743 911        | to        | 4 030        |
| 726 060 811        | to        | 0 900        | 732 572 221        | to        | 2 490        | 740 265 811        | to        | 6 290        | 750 779 118        | to        | 9 400        |
| 726 391 970        | to        | 2 520        | 732 586 479        | to        | 6 710        | 740 299 111        | to        | 9 170        | 750 910 981        | to        | 1 010        |
| 726 484 771        | to        | 4 800        | 732 994 037        | to        | 4 080        | 740 299 231        | to        | 9 260        | 750 960 841        | to        | 0 900        |
| 726 493 351        | to        | 5 300        | 733 163 449        | to        | 3 460        | 740 329 266        | to        | 9 320        | 751 296 211        | to        | 6 240        |
| 726 504 031        | to        | 4 063        | 733 297 171        | to        | 7 290        | 740 889 081        | to        | 9 090        | 751 539 121        | to        | 9 180        |
| 726 504 070        | to        | 4 090        | 733 446 631        | to        | 7 110        | 741 010 421        | to        | 0 530        | 751 541 311        | to        | 1 790        |
| 726 504 331        | to        | 4 390        | 733 474 665        | to        | 4 770        | 741 113 041        | to        | 3 370        | 751 757 641        | to        | 7 700        |
| 726 563 701        | to        | 4 060        | 733 704 482        | to        | 4 570        | 741 373 891        | to        | 4 340        | 751 936 951        | to        | 7 010        |
| 726 599 371        | to        | 9 460        | 733 751 041        | to        | 1 130        | 741 452 369        | to        | 2 490        | 751 951 861        | to        | 1 890        |
| 726 626 356        | to        | 6 370        | 734 009 101        | to        | 9 130        | 741 492 991        | to        | 3 140        | 751 999 021        | to        | 9 110        |
| 727 182 271        | to        | 2 510        | 734 290 759        | to        | 0 770        | 741 553 460        | to        | 3 470        | 752 139 516        | to        | 9 570        |
| 727 416 181        | to        | 6 240        | 734 389 273        | to        | 9 290        | 741 764 431        | to        | 4 520        | 752 182 892        | to        | 2 950        |
| 727 481 431        | to        | 1 460        | 734 440 031        | to        | 0 111        | 741 764 431        | to        | 4 520        | 752 206 861        | to        | 7 100        |
| 727 749 241        | to        | 9 780        | 734 797 201        | to        | 7 320        | 742 178 834        | to        | 8 880        | 752 295 241        | to        | 5 600        |
| 728 382 331        | to        | 2 480        | 734 939 611        | to        | 9 640        | 742 325 500        | to        | 5 520        | 752 731 351        | to        | 1 410        |

|                    |           |              |                    |           |              |                    |           |              |                    |           |              |
|--------------------|-----------|--------------|--------------------|-----------|--------------|--------------------|-----------|--------------|--------------------|-----------|--------------|
| 752 767 441        | to        | 7 470        | 762 593 431        | to        | 3 460        | 773 208 991        | to        | 9 290        | 800 427 530        | to        | 7 540        |
| 753 008 941        | to        | 9 030        | 763 155 160        | to        | 5 180        | 773 231 311        | to        | 1 340        | 800 872 741        | to        | 2 830        |
| 753 194 311        | to        | 4 370        | 763 178 631        | to        | 8 660        | 773 348 739        | to        | 8 940        | 801 349 801        | to        | 9 830        |
| 753 620 378        | to        | 0 400        | 763 506 001        | to        | 6 060        | 773 348 739        | to        | 8 940        | 801 676 681        | to        | 7 100        |
| 754 013 917        | to        | 3 940        | 763 522 141        | to        | 2 470        | 773 575 891        | to        | 5 950        | 802 967 821        | to        | 7 940        |
| 754 161 061        | to        | 1 120        | 763 717 694        | to        | 7 800        | 773 852 971        | to        | 3 030        | 803 217 601        | to        | 7 780        |
| 754 358 445        | to        | 8 610        | 763 826 461        | to        | 6 520        | 775 373 449        | to        | 3 460        | 803 729 731        | to        | 9 850        |
| 754 410 451        | to        | 0 660        | 763 900 460        | to        | 0 471        | <b>789 257 191</b> | <b>to</b> | <b>7 250</b> | 803 747 402        | to        | 7 520        |
| 754 438 393        | to        | 8 410        | 763 900 479        | to        | 0 530        | <b>790 448 020</b> | <b>to</b> | <b>8 460</b> | 804 138 181        | to        | 8 420        |
| 754 493 109        | to        | 3 130        | 763 917 271        | to        | 7 750        | 790 597 485        | to        | 7 530        | 804 428 224        | to        | 8 250        |
| 754 664 182        | to        | 4 220        | 764 125 801        | to        | 5 860        | 790 911 883        | to        | 1 900        | 804 682 411        | to        | 2 710        |
| 754 816 377        | to        | 6 470        | 764 284 525        | to        | 4 560        | 791 057 441        | to        | 7 550        | 805 272 525        | to        | 2 540        |
| 755 487 421        | to        | 7 600        | 764 526 241        | to        | 6 330        | 791 239 081        | to        | 9 290        | 805 523 445        | to        | 3 460        |
| 755 592 901        | to        | 3 140        | 764 601 421        | to        | 1 600        | 791 374 483        | to        | 4 500        | 805 745 704        | to        | 5 730        |
| 755 790 020        | to        | 0 030        | 764 650 231        | to        | 0 470        | 791 387 971        | to        | 8 030        | 806 452 907        | to        | 2 980        |
| 755 791 730        | to        | 1 800        | 764 984 371        | to        | 4 850        | 791 447 521        | to        | 7 850        | 806 744 781        | to        | 4 850        |
| 755 926 951        | to        | 7 070        | 765 003 667        | to        | 3 680        | 791 451 151        | to        | 1 240        | 806 982 181        | to        | 2 300        |
| 755 934 332        | to        | 4 510        | 765 042 517        | to        | 2 540        | 791 500 009        | to        | 0 470        | 807 764 791        | to        | 4 910        |
| 755 957 701        | to        | 8 000        | 765 194 728        | to        | 4 970        | 791 771 431        | to        | 1 490        | 808 089 931        | to        | 9 960        |
| 755 962 981        | to        | 3 280        | 765 387 365        | to        | 7 450        | 792 004 293        | to        | 4 320        | 808 656 423        | to        | 6 450        |
| 756 035 371        | to        | 5 490        | 765 541 801        | to        | 2 100        | 792 018 379        | to        | 8 420        | 808 753 771        | to        | 3 800        |
| 756 301 257        | to        | 1 290        | 765 638 461        | to        | 8 970        | 792 070 621        | to        | 0 740        | 809 189 001        | to        | 9 010        |
| 756 371 565        | to        | 1 580        | 765 647 101        | to        | 7 190        | 792 145 211        | to        | 5 230        | 809 886 879        | to        | 6 930        |
| 756 876 031        | to        | 6 120        | 765 813 781        | to        | 4 029        | 792 391 381        | to        | 1 620        | 809 890 489        | to        | 0 500        |
| 756 876 151        | to        | 6 240        | 765 879 314        | to        | 9 390        | 792 452 779        | to        | 2 790        | <b>810 323 734</b> | <b>to</b> | <b>3 760</b> |
| 756 970 129        | to        | 0 140        | 765 954 001        | to        | 4 030        | 792 772 728        | to        | 2 770        | 810 367 116        | to        | 7 140        |
| 757 059 613        | to        | 9 630        | 766 120 286        | to        | 0 320        | 792 903 511        | to        | 3 990        | 810 526 351        | to        | 6 500        |
| 757 078 540        | to        | 8 560        | 766 125 716        | to        | 5 750        | 793 282 518        | to        | 2 533        | 810 806 911        | to        | 6 940        |
| 757 086 209        | to        | 6 240        | 766 158 824        | to        | 8 840        | 794 041 831        | to        | 2 040        | 810 807 211        | to        | 7 240        |
| 757 240 591        | to        | 0 650        | 766 388 433        | to        | 8 460        | 794 397 709        | to        | 7 780        | 811 423 021        | to        | 3 110        |
| 757 277 371        | to        | 7 700        | 766 509 421        | to        | 9 660        | 794 581 741        | to        | 2 040        | 811 517 221        | to        | 7 239        |
| 757 291 591        | to        | 2 730        | 766 572 901        | to        | 3 020        | 794 592 122        | to        | 2 150        | 811 721 101        | to        | 1 130        |
| 757 964 251        | to        | 4 280        | 766 748 500        | to        | 8 521        | 795 032 251        | to        | 2 340        | 812 025 721        | to        | 5 900        |
| 758 067 001        | to        | 7 090        | 767 024 341        | to        | 4 370        | 795 796 291        | to        | 6 350        | 812 093 073        | to        | 3 130        |
| 758 105 221        | to        | 5 250        | 767 326 471        | to        | 6 590        | 796 070 139        | to        | 0 160        | 812 100 821        | to        | 0 840        |
| 758 324 941        | to        | 5 000        | 767 332 561        | to        | 2 950        | 796 143 151        | to        | 3 630        | 812 465 251        | to        | 5 610        |
| 758 593 628        | to        | 3 650        | 768 009 841        | to        | 9 960        | 796 159 725        | to        | 9 740        | 812 918 341        | to        | 8 670        |
| 758 709 038        | to        | 9 060        | 768 011 489        | to        | 1 520        | 796 169 306        | to        | 9 340        | 812 918 701        | to        | 8 760        |
| 758 744 101        | to        | 4 160        | 768 177 980        | to        | 7 990        | 796 373 406        | to        | 3 430        | 813 050 491        | to        | 0 520        |
| 758 850 883        | to        | 0 900        | 768 391 081        | to        | 1 170        | 796 602 961        | to        | 3 050        | 813 073 171        | to        | 3 200        |
| 758 860 951        | to        | 1 550        | 768 661 569        | to        | 1 650        | 796 708 441        | to        | 8 500        | 813 398 476        | to        | 8 550        |
| 759 152 851        | to        | 2 880        | 769 000 051        | to        | 0 080        | 796 886 281        | to        | 6 430        | 813 713 971        | to        | 4 000        |
| 759 740 941        | to        | 1 090        | 769 050 841        | to        | 0 900        | 796 901 701        | to        | 2 000        | 813 858 121        | to        | 8 150        |
| <b>760 004 596</b> | <b>to</b> | <b>4 610</b> | 769 159 081        | to        | 9 178        | 796 975 466        | to        | 5 590        | 814 789 330        | to        | 9 349        |
| 760 118 191        | to        | 8 250        | 769 737 496        | to        | 7 510        | 797 272 917        | to        | 2 950        | 814 984 656        | to        | 4 680        |
| 760 155 001        | to        | 5 090        | 769 778 491        | to        | 8 730        | 797 519 441        | to        | 9 460        | 815 016 020        | to        | 6 030        |
| 760 378 002        | to        | 8 020        | 769 827 331        | to        | 7 450        | 797 519 731        | to        | 0 240        | 815 199 410        | to        | 9 420        |
| 760 692 722        | to        | 2 749        | <b>770 216 071</b> | <b>to</b> | <b>6 100</b> | 797 535 181        | to        | 5 330        | 815 240 491        | to        | 0 520        |
| 761 055 460        | to        | 5 480        | 770 723 281        | to        | 3 400        | 797 646 151        | to        | 6 180        | 815 755 591        | to        | 5 620        |
| 761 169 781        | to        | 9 810        | 770 790 451        | to        | 0 480        | 798 040 053        | to        | 0 080        | 815 755 622        | to        | 5 650        |
| 761 504 941        | to        | 5 120        | 770 915 150        | to        | 5 490        | 798 055 813        | to        | 5 830        | 815 806 381        | to        | 6 680        |
| 761 516 836        | to        | 6 910        | 771 455 551        | to        | 5 610        | 798 055 891        | to        | 5 950        | 816 126 834        | to        | 6 870        |
| 761 613 588        | to        | 3 600        | 771 609 661        | to        | 9 690        | 798 326 371        | to        | 6 520        | 816 156 721        | to        | 6 780        |
| 761 688 631        | to        | 8 690        | 771 932 551        | to        | 2 580        | 798 339 167        | to        | 9 210        | 816 580 903        | to        | 0 920        |
| 761 805 199        | to        | 5 240        | 772 057 224        | to        | 7 440        | 798 562 411        | to        | 2 440        | 816 945 571        | to        | 5 600        |
| 761 826 106        | to        | 6 120        | 772 162 660        | to        | 3 070        | 798 632 461        | to        | 2 490        | 817 253 011        | to        | 3 280        |
| 761 881 171        | to        | 1 560        | 772 718 615        | to        | 8 640        | 798 807 151        | to        | 7 510        | 817 763 881        | to        | 4 060        |
| 761 975 641        | to        | 5 670        | 772 940 140        | to        | 0 160        | 798 944 761        | to        | 5 030        | 818 330 562        | to        | 0 610        |
| 761 975 886        | to        | 5 895        | 772 970 886        | to        | 0 940        | 799 118 616        | to        | 8 640        | 818 459 641        | to        | 9 670        |
| 762 304 144        | to        | 4 170        | 773 009 419        | to        | 9 430        | 799 133 191        | to        | 3 220        | 818 926 273        | to        | 6 320        |
| 762 324 931        | to        | 4 960        | 773 112 031        | to        | 2 060        | 799 177 626        | to        | 7 650        | 818 950 351        | to        | 0 380        |
| 762 439 261        | to        | 9 290        | 773 125 387        | to        | 5 410        | 799 854 751        | to        | 5 200        | 818 962 492        | to        | 2 530        |
| 762 524 158        | to        | 4 220        | 773 179 320        | to        | 9 410        | <b>800 044 320</b> | <b>to</b> | <b>4 410</b> | 819 032 341        | to        | 2 730        |
| 762 584 872        | to        | 4 970        | 773 202 989        | to        | 3 140        | 800 211 901        | to        | 2 440        | 819 127 054        | to        | 7 080        |

|                    |                 |             |          |             |          |             |          |
|--------------------|-----------------|-------------|----------|-------------|----------|-------------|----------|
| 819 278 540        | to 8 670        | 822 703 442 | to 3 470 | 826 226 644 | to 6 670 | 828 539 341 | to 9 370 |
| 819 544 681        | to 4 740        | 822 900 991 | to 1 020 | 826 582 951 | to 3 430 | 828 732 331 | to 2 390 |
| 819 928 441        | to 8 650        | 822 925 951 | to 6 100 | 826 720 201 | to 0 230 | 828 807 781 | to 7 840 |
| <b>820 034 406</b> | <b>to 4 430</b> | 823 284 931 | to 4 990 | 827 005 671 | to 5 830 | 828 830 952 | to 0 963 |
| 820 070 761        | to 1 540        | 823 293 031 | to 3 210 | 827 287 861 | to 7 950 | 828 939 781 | to 0 050 |
| 820 191 342        | to 1 360        | 823 556 011 | to 6 100 | 827 291 502 | to 1 520 | 829 002 721 | to 2 870 |
| 820 274 856        | to 4 880        | 824 078 341 | to 8 370 | 827 575 381 | to 5 470 | 829 005 301 | to 5 540 |
| 820 600 171        | to 0 230        | 824 156 325 | to 6 340 | 827 609 085 | to 9 100 | 829 080 241 | to 0 330 |
| 821 172 241        | to 2 360        | 824 511 252 | to 1 270 | 827 619 811 | to 9 840 | 829 160 986 | to 1 000 |
| 821 229 661        | to 9 720        | 824 588 281 | to 8 370 | 827 883 511 | to 3 600 | 829 176 841 | to 6 930 |
| 821 229 743        | to 9 780        | 825 140 397 | to 0 460 | 828 160 441 | to 0 530 | 829 471 561 | to 1 590 |
| 821 903 731        | to 3 910        | 825 409 651 | to 9 680 | 828 376 201 | to 6 260 | 829 561 065 | to 1 080 |
| 821 927 841        | to 7 850        | 825 472 171 | to 2 200 | 828 441 602 | to 1 630 | 829 566 481 | to 6 510 |
| 822 505 801        | to 5 830        | 826 042 898 | to 2 920 | 828 539 316 | to 9 340 | 829 569 931 | to 9 960 |

— Criminal Investigations Group, U.S. Postal Inspection Service, 2-23-23

### Verifying U.S. Postal Service Money Orders

Follow these steps to cash a Postal Service™ money order:

1. Check that the amount does not exceed the legal limit: \$1,000 for domestic, and \$700 for international Postal Service money orders.
2. Check that the proper security features are present:
  - When held to the light, a watermark of Benjamin Franklin is repeated from top to bottom on the left side.
  - When held to the light, a dark line (security thread) runs from top to bottom with the word “USPS” repeated.
  - When there is discoloration around the dollar amounts, this might indicate the amounts were changed.

These appear in Postal Service Notice 299, *U.S. Postal Money Order Reference Card*, or online at [usps.com/shop/money-orders.htm](https://usps.com/shop/money-orders.htm).

3. If the money order seems suspicious, call the U.S. Postal Service Money Order Verification System at 866-459-7822.

Provide this information to local banks and retailers, as they also receive Postal Service money orders for cashing.

— *Delivery and Retail Customer Service Operations, 2-23-23*

### Counterfeit Canadian Money Order Forms

#### Do Not Cash

To be posted and used by retail window employees. As directed, destroy previous notices. Destroy all interim notices when the numbers listed appear in the *Postal Bulletin*.

|             |             |             |
|-------------|-------------|-------------|
| 671,819,086 | 683,594,542 | 687,262,503 |
| 676,612,640 | 684,683,610 | 687,262,525 |
| 677,891,039 | 686,619,878 | 687,262,526 |
| 678,282,493 | 686,619,886 | 687,287,578 |
| 678,916,031 | 686,619,887 | 687,287,581 |
| 679,552,215 | 686,794,382 | 687,287,582 |
| 679,694,334 | 686,794,426 | 694,063,898 |
| 679,751,983 | 686,794,427 | 694,063,899 |
| 679,800,207 | 686,794,431 | 694,063,980 |
| 681,130,536 | 687,262,502 | 701,321,725 |
| 681,844,376 |             |             |

— *Criminal Investigations Group, U.S. Postal Inspection Service, 2-23-23*

### Toll-Free Number Available to Verify Canadian Money Orders

The Canada Post Corporation has a toll-free number that cashing agents can call to verify the validity of Canadian Postal Money Orders. The number is 800-563-0444.

This toll-free number is printed on the back of the Canadian Postal Money Orders.

— *Criminal Investigations Group, U.S. Postal Inspection Service, 2-23-23*

## Other Information

### Overseas Military/Diplomatic Mail

Mail addressed to military and diplomatic post offices overseas is subject to certain conditions or restrictions of mailing regarding content, preparation, and handling. The APO/FPO/DPO table outlines these conditions by APO/FPO/DPO ZIP Codes™ through the use of footnoted mailing restrictions codes (see the [Restrictions](#) page following the table).

Acceptance clerks must use the table with the Retail System Software terminal to determine which APO/FPO/DPO ZIP Codes are active and which conditions of mailing apply.

The entries under “Changes” appear in bold in the following APO/FPO/DPO table:

### Changes

| APO/FPO/DPO  | Action                     | Effective Date | See Restrictions        |
|--------------|----------------------------|----------------|-------------------------|
| APO AE 09890 | Close                      | 02/10/2023     |                         |
| APO AA 34050 | Close                      | 02/10/2023     |                         |
| APO AA 34051 | Close                      | 02/10/2023     |                         |
| APO AA 34052 | Close                      | 02/10/2023     |                         |
| APO AA 34053 | Close                      | 02/10/2023     |                         |
| APO AA 34054 | Close                      | 02/10/2023     |                         |
| FPO AP 96542 | Add C, C2, R; Remove V, Z1 | 02/06/2023     | B-C-C2-F-F1-F2-F3-R-S   |
| FPO AP 96543 | Add C, C2, R; Remove V, Z1 | 02/06/2023     | B-C-C2-F-F1-F2-F3-P-R-S |

We have eliminated “Not Active” entries from the table below to save space and paper.

### APO/FPO/DPO Table

| APO/<br>FPO/<br>DPO | See<br>Restrictions                     | APO/<br>FPO/<br>DPO | See<br>Restrictions             | APO/<br>FPO/<br>DPO | See<br>Restrictions                      | APO/<br>FPO/<br>DPO | See<br>Restrictions                               |
|---------------------|---|---------------------|---------------------------------|---------------------|--|---------------------|---|
| 09002               | A-B-C-C2-F-F3-H-N-R-S-V-Z1              | 09021               | B-C-C2-D-E-F3-H-M-R-S-U-Z1      | 09107               | B-C-C2-D-E-F-F3-H-M-R-S-U                | 09170               | A-B-C2-F-F1-F3-J-L-M-N-R-R1-S-T-V-X-Z1            |
| 09003               | B-C-C2-D-E-F-F3-H-M-P-R-S-U             | 09034               | B-C-C2-D-E-F-F3-H-M-R-S-U       | 09112               | B-C-C2-D-E-F-F3-H-M-R-S-U                | 09171               | A-B-C1-C2-E3-F-F1-F3-J-L-M-N-R-R1-S-T-V-X-Z1      |
| 09004               | B-C-C2-D-E-F3-H-M-R-S-U                 | 09044               | B-C-C2-D-F-F3-H-R-S-U           | 09114               | B-C-C2-D-E-F-F3-H-M-R-S-U                | 09172               | B-C-C2-D-E-F-F3-H-M-R-S-U                         |
| 09005               | B-C-C2-D-E-F-F3-H-M-P-R-S               | 09046               | B-C-C2-D-E-F-F3-H-M-R-S-U       | 09115               | A-B-C2-F-F3-H-N-R-S-V-Z1                 | 09173               | B-C-C2-D-E-F-F3-H-M-R-S-U                         |
| 09006               | B-C-C2-D-E-F-F3-H-M-R-S-U               | 09049               | B-C-C2-D-E-F-F3-H-M-R-S-U       | 09116               | A-B-C2-F-F3-H-N-R-S-V-Z1                 | 09174               | B-C-C2-F-F1-F3-L-N-R-R1-S-T-V-X-Z1                |
| 09008               | A-B-C2-F-F3-H-N-R-S-V-Z1                | 09053               | B-C-C2-D-E-F-F3-H-M-R-S-U       | 09117               | A-B-C-C2-F-F3-H-N-R-S-V-Z1               | 09175               | A-B-C1-C2-E2-F-F1-F3-H1-J-L-M-N-R-R1-S-T-V-W-X-Z1 |
| 09009               | B-C-C2-D-E-F3-H-M-R-S-U-Z1              | 09060               | B-C-C2-D-E-F1-F3-H-M-N-R-S-U-Z1 | 09123               | B-C-C2-D-E-F3-H-M-R-S-U-Z1               | 09176               | A-B-C2-F-F1-F3-J-L-M-N-R-R1-S-T-V-X-Z1            |
| 09010               | B-C-C2-D-E-F-F3-H-M-R-S-U2              | 09067               | B-C-C2-D-E-F-F3-H-M-R-S-U       | 09126               | B-C-C2-F3-H-M-P-R-S-Z1                   | 09177               | B-C-C2-D-E-F-F3-H-M-R-S-U                         |
| 09011               | B-C-C2-D-E-F3-H-M-R-S                   | 09068               | B-C-C2-D-E-F3-H-R-S-U-Z1        | 09128               | B-C-C2-D-E-F-F3-H-M-R-S-U                | 09178               | B-C1-C2-E2-F1-F3-I3-L-M-N-R-S-T-V-X-Z1            |
| 09012               | B-C-C2-D-E-F3-H-M-R-S-U-Z1              | 09069               | A-B-C-C2-D-E-F3-H-N-R-S-U-V     | 09131               | B-C-C2-D-E-F-F3-H-M-R-S-U                | 09179               | A-B-C-C1-C2-F-F1-F3-J-L-M-N-R-R1-S-T-V-X-Z1       |
| 09013               | B-C-C2-D-E-F-F1-F3-H-M-R-S-U-Z1         | 09079               | B-C-C2-D-E-F-F3-H-M-R-S-U       | 09135               | A-B-C2-F-F3-H-N-R-S-U-V-Z1               | 09180               | B-C-C2-D-E-F-F3-H-M-R-S-U                         |
| 09014               | B-C-C2-D-E-F3-H-M-P-R-S-U               | 09094               | B-C-C2-D-F3-H-M-P-R-S-Z1        | 09136               | B-C-C2-D-E-F-F3-H-M-P-R-S-U              | 09186               | B-C-C2-D-E-F-F3-H-M-P-R-S-U                       |
| 09015               | A-B-C-C1-C2-F-F1-F3-J-L-M-N-R-R1-S-V-Z1 | 09095               | B-C-C2-D-E-F-F3-H-M-R-S-U       | 09138               | B-C-C2-D-F-F3-H-M-R-S-U                  | 09203               | A-B-C-C1-C2-F-F1-F3-I3-J-L-M-N-R-R1-T-V-Z1        |
| 09016               | B-C-C2-D-E-F1-F3-H-M-R-S-U              | 09096               | B-C-C2-D-E-F-F3-H-M-R-S-U       | 09140               | B-C-C2-D-E-F-F3-H-M-R-S-U                | 09204               | B-C-F3-M-N-R-S-V-Z1                               |
| 09017               | A-B-C2-F-F3-H-N-R-S-V-Z1                | 09101               | A-B-C-C2-F-F3-H-N-Q-R-S-V-Z1    | 09142               | B-C-C2-D-E-F-F3-H-M-R-S-U                |                     |   |
| 09018               | A-B-C-C2-F-F3-H-N-R-S-V-Z1              | 09103               | A-B-C-C2-F-F3-H-N-R-S-V-Z1      | 09154               | B-C-C2-D-E-F-F3-H-M-R-S-U                |                     |   |
| 09020               | B-C-C2-D-E-F-F3-H-M-R-S-U               | 09104               | B-C-C2-D-F3-H-M-R-S-U-Z1        | 09160               | B-C-C2-D-F-F1-F3-H-J-L-M-N-R-R1-T-U-V-Z1 |                     |   |

| APO/<br>FPO/<br>DPO | See<br>Restrictions                                  | APO/<br>FPO/<br>DPO | See<br>Restrictions                                 | APO/<br>FPO/<br>DPO | See<br>Restrictions                             | APO/<br>FPO/<br>DPO | See<br>Restrictions              |
|---------------------|--|---------------------|---|---------------------|---|---------------------|----------------------------------|
| 09205               | A-B-C-C2-E2-F-F3-M-N-R-S-T-V-X                       | 09292               | A-B-C-C2-E-E2-E3-F1-F3-H-H1-J-L-M-N-R-R1-S-T-V-X-Z1 | 09421               | B-C-C1-C2-F3-M-R-S-U-Z1                         | 09517               | B-C-C2-F-F1-F3-R-R1-S-V          |
| 09211               | B-C-C2-D-E-E-F-F3-H-M-P-R-S-U                        | 09293               | A-B-C-C1-C2-E-E2-F1-F3-I3-L-M-N-R-S-T-V-X-Z1        | 09447               | B-C-C1-C2-F3-M-R-S-U-V-Z1                       | 09520               | B-F-F1-F3-R-R1-S-V               |
| 09213               | B-C2-F-F1-F3-H-J-L-M-N-R-R1-T-U-V-Z1                 | 09294               | B-C-C1-C2-E2-F1-F3-H1-L-N-R-R1-S-T-V-X-Z1           | 09454               | B-C-C1-C2-F3-M-R-S-U-V-Z1                       | 09522               | B-F-F1-F3-R-S-V                  |
| 09214               | B-C-C2-D-E-E-F3-H-M-R-S-U-Z1                         | 09295               | B-C-C1-C2-E2-F1-F3-H1-J-L-M-N-R-R1-S-T-V-X-Z1       | 09456               | B-C-C1-C2-F3-M-N-R-S-U-V-Z1                     | 09523               | B-C-C2-F-F1-F3-R-R1-S-V          |
| 09216               | B,C,F1,F3,M,N,R,S,V,Z1                               | 09301               | A-B-C1-C2-E2-F-F1-F3-H1-I3-L-M-N-R-R1-S-T-U4-V-Z1   | 09459               | B-C-C1-C2-F3-M-R-S-U-Z1                         | 09524               | B-C-C2-F-F1-F3-R-R1-S-V          |
| 09227               | B-C-C2-D-E-E-F-F3-H-M-R-S-U                          | 09304               | A-B-C-C1-C2-F-F1-F3-H-M-N-R-S-V-Z1                  | 09461               | B-C-C1-C2-F3-M-P-R-S-U-Z1                       | 09532               | B-C-C2-F-F1-F3-R-R1-S-V          |
| 09240               | A-B-C1-C2-F-F3-H-N-R-S-V                             | 09305               | A-B-C1-E2-F-F1-F3-H1-I3-M-N-R-R1-S-T-V-Z1           | 09463               | B-C-C1-C2-F3-M-R-S-U-Z1                         | 09533               | B-V                              |
| 09241               | A-B-C-C2-F3-N-R-S-U-Z1                               | 09306               | A-B-C1-E2-F-F1-F3-H1-R-R1-S-U2-V-Z1                 | 09466               | B-C-C1-C2-F3-R-S-U-Z1                           | 09534               | B-F-F1-F3-R-R1-S-V               |
| 09242               | A-B-C1-C2-F-F3-H-N-R-S-V                             | 09307               | B-C-C2-F-F3-N-R-R1-S-Z1                             | 09467               | B-E-E1-F-F3-J-L-M-N-R-S-T-V-X-Z1                | 09541               | A-B-C-F-F3-M-N-S-V-Z1            |
| 09250               | B-C-C2-D-E-E-F-F3-H-M-R-S-U                          | 09309               | A-B-C-C1-C2-E2-F-F1-F3-H1-M-N-R-R1-S-V-Z1           | 09468               | B-C-C1-C2-F3-M-R-S-U-Z1                         | 09542               | A-B-C-F-F3-M-N-S-V-Z1            |
| 09261               | B-C-C2-D-E-E-F3-H-M-N-R-S-U-V-Z1                     | 09310               | A-B-C1-C2-E2-F-F1-F3-H1-I3-L-M-N-R-R1-S-T-U4-V-Z1   | 09469               | B-C-C1-C2-F3-R-S-U-Z1                           | 09543               | A-B-C-F-F3-M-N-S-V-Z1            |
| 09263               | B-C-C2-D-E-E-F3-H-M-R-S-U                            | 09311               | A-B-C1-C2-E2-F-F1-F3-H1-I3-L-M-N-R-R1-S-T-U4-V-Z1   | 09470               | B-C-C1-C2-F3-M-R-S-U-Z1                         | 09544               | A-B-C-F-F3-M-N-S-V-Z1            |
| 09264               | B-C-C2-D-E-E-F-F3-H-M-R-S-U                          | 09312               | A-B-C1-C2-E2-F-F1-F3-H1-I3-L-M-N-R-R1-S-T-U4-V-Z1   | 09487               | A-B-C-C1-C2-E2-F1-F3-I3-L-M-N-R-R1-S-T-V-W-X-Z1 | 09545               | A-B-C-F-F3-M-N-S-V-Z1            |
| 09265               | B-C-D-F-F1-H-J-L-M-N-R-S-T-U-V-Z1                    | 09315               | A-B-C1-E2-F-F3-N-R-R1-S-V-Z1                        | 09488               | A-B-C-C1-C2-E2-F3-J-L-M-N-S-T-V-W-X-Z1          | 09550               | B-C-C2-F-F1-F3-R-R1-S-V          |
| 09266               | A-B-C2-F3-S-U-R-V-Z1                                 | 09316               | A-B-C1-E2-F-F1-F3-H1-I3-M-N-R-R1-S-T-V-Z1           | 09489               | A-B-C-C1-C2-E2-F1-F3-L-M-N-R-R1-S-T-V-W-X-Z1    | 09554               | B-C-C2-F-F1-F3-R-R1-S-V          |
| 09276               | A-B-F-F3-I3-L-M-N-R-S-T-V-X-Z1                       | 09321               | A-B-C1-C2-E2-F-F3-H1-M-N-R-R1-S-V-Z1                | 09490               | A-B-C1-C2-E2-F-F1-F3-H1-J-L-M-N-R-R1-S-T-V-X-Z1 | 09556               | B-F-F1-R-R1-V                    |
| 09277               | A-B-E-E1-E2-F1-F3-I3-L-N-R-S-T-V-X-Z1                | 09330               | A-B-C1-C2-D-E-E2-F-F1-F3-H-H1-M-R-R1-S-V-Z1         | 09491               | A-B-C1-C2-E2-F1-F3-H1-J-L-M-N-R-R1-S-T-V-X-Z1   | 09564               | B-C-C2-F-F1-F3-R-R1-S-V          |
| 09278               | A-B-F-F3-I3-L-M-N-R-S-T-V-X-Z1                       | 09333               | A-B-C-C1-C2-E2-F-F1-F3-H1-I3-M-N-R-R1-S-V-V1-Z1     | 09494               | B-C-C1-C2-F3-M-R-S-U-Z1                         | 09565               | B-C-C2-F-F1-F3-R-R1-S-V          |
| 09279               | A-B-E-E1-F-F3-I3-L-M-N-R-S-T-V-X-Z1                  | 09343               | A-B-C1-C2-F-F3-M-N-R-R1-S-V-Z1                      | 09498               | B-C1-C2-F-F1-F3-J-L-N-R-R1-T-V-Z1               | 09566               | B-C-C2-E2-E3-F-F1-F3-R-R1-S-V    |
| 09280               | A-B-C-C1-C2-E-E2-F1-F3-H-I3-L-M-N-R-S-T-V-W-X-Z1     | 09348               | A-B-C1-E2-F-F1-F3-H1-I3-M-N-R-R1-S-T-V-Z1           | 09501               | B-V   | 09567               | B-C-C2-E2-E3-F-F1-F3-R-R1-S-V    |
| 09281               | A-B-C1-C2-E2-E3-F-F1-F3-H-H1-J-L-M-N-R-R1-S-T-V-X-Z1 | 09357               | A-B-C1-E2-F-F3-H1-M-R-V-Z1                          | 09502               | B-V   | 09568               | B-C-C2-F-F1-F3-R-R1-S-V          |
| 09282               | A-B-C1-C2-E2-E3-F-F1-F3-H-H1-J-L-M-N-R-R1-S-T-V-X-Z1 | 09365               | A-B-C-C1-E2-F-F3-H1-M-N-R-V-Z1                      | 09503               | B-F-F1-R-R1-V                                   | 09569               | B-C-C2-E2-E3-F-F1-F3-R-R1-S-V-Z1 |
| 09283               | A-B-E-E1-F-F3-L-M-N-R-S-T-V-X-Z1                     | 09366               | A-B-C-C1-E2-F-F1-F3-H-H1-M-R-R1-S-V-Z1              | 09504               | B-V   | 09570               | B-C-C2-F-F1-F3-R-R1-S-V          |
| 09284               | A-B-C-C2-F-F3-I3-L-M-N-R-S-T-V-X-Z1                  | 09401               | B-C-C1-C2-F3-M-R-S-U-Z1                             | 09505               | B-V   | 09573               | B-C-C2-E2-E3-F-F1-F3-R-R1-S-V-Z1 |
| 09285               | A-B-C-E-E-1-F1-F3-H-I3-L-M-N-R-S-T-V-X-Z1            | 09403               | B-C-C1-C2-F3-M-R-S-U-Z1                             | 09506               | B-V   | 09574               | B-F-F1-R-R1-V                    |
| 09287               | B-C2-E1-F1-F3-J-L-N-R-S-T-V-X-Z1                     | 09410               | C-C2-F-F1-F3-N-R-S-U2                               | 09507               | B-V   | 09575               | B-C-C2-F-F1-F3-R-R1-S-V          |
| 09288               | A-B-C-C1-C2-E2-F1-F3-H-H1-J-L-M-N-R-R1-S-T-V-X-Z1    |                     |   | 09508               | B-C-C2-F-F3-R-R1-S-V                            | 09576               | B-C-C2-F-F1-F3-R-R1-S-V          |
| 09289               | B-E2-F1-F3-H1-J-L-M-N-R-R1-S-T-U2-V-X-Z1             |                     |   | 09509               | B-C-C2-F-F3-R-R1-S-V                            | 09577               | B-C-C2-F-F1-F3-R-R1-S-V          |
| 09290               | A-B-F1-F3-J-L-M-N-R-S-T-U2-V-X-Z1                    |                     |   | 09510               | B-C-C2-F-F3-R-R1-S-V                            | 09578               | B-C-C2-F-F1-F3-R-R1-S-V          |
| 09291               | B-C-C1-C2-E2-F1-F3-H1-L-N-R-R1-S-T-V-X-Z1            |                     |   | 09511               | B-C-C2-F-F3-R-R1-S-V                            | 09579               | B-C-C2-F-F1-F3-R-R1-S-V          |
|                     |  |                     |   | 09512               | B-C-C2-F-F1-F3-R-R1-S-V                         | 09581               | B-C-C2-F-F1-F3-R-R1-S-V          |
|                     |  |                     |   | 09513               | B-C-C2-F-F1-F3-R-R1-S-V                         | 09582               | B-C-C2-F-F1-F3-R-R1-S-V          |
|                     |  |                     |   | 09514               | B-C-C2-F-F1-F3-R-R1-V                           | 09583               | B-C-C2-F-F1-F3-R-R1-S-V          |
|                     |  |                     |   | 09516               | B-C-C2-F-F1-F3-R-R1-S-V                         | 09586               | B-C-C2-F-F1-F3-R-R1-S-V          |
|                     |  |                     |   |                     |   | 09587               | B-C-C2-F-F1-F3-R-R1-S-V          |
|                     |  |                     |   |                     |   | 09588               | B-C-C2-F-F1-F3-R-R1-S-V          |
|                     |  |                     |   |                     |   | 09589               | B-F-F1-F3-R-S-V                  |

| APO/<br>FPO/<br>DPO | See<br>Restrictions                           | APO/<br>FPO/<br>DPO | See<br>Restrictions                        | APO/<br>FPO/<br>DPO | See<br>Restrictions                             | APO/<br>FPO/<br>DPO | See<br>Restrictions                              |
|---------------------|---|---------------------|--|---------------------|---|---------------------|--|
| 09590               | B-C-C2-F-F1-F3-R-R1-S-V                       | 09648               | B-C2-F3-N-R-S-U-V-Z1                       | 09736               | A-B-C1-F-F1-F3-J-L-M-N-R-R1-T-V-Z1              | 09808               | A-B-C1-C2-E2-F-F1-F3-H-H1-J-L-N-R-R1-T-V-Z1      |
| 09591               | B-C-C2-F-F1-F3-R-R1-S-V                       | 09649               | B-C2-F3-N-R-S-U-Z1                         | 09737               | A-B-C1-C2-F-F1-F3-I3-J-L-M-N-R-R1-T-V-W-Y-Z-Z1  | 09809               | B-C1-C2-E3-F-F1-F3-J-L-N-T-V-Z1                  |
| 09592               | B-C-C2-F-F1-F3-R-R1-S-V                       | 09701               | A-B-C1-C2-F-F1-F3-J-L-M-N-R-R1-T-V-Z1      | 09738               | A-B-C1-C2-F-F1-F3-J-L-M-N-R-R1-T-V-Z1           | 09810               | A-B-C2-F-F1-F3-N-R-S-V-Z1                        |
| 09593               | B-F-F1-F3-R-S-V                               | 09702               | B-C-C2-F-F1-M-R-R1-S-U                     | 09739               | A-B-C1-C2-F-F1-F3-J-L-M-N-R-R1-T-V-Z1           | 09811               | A-B-C-C2-E-E2-E3-F1-F3-H-H1-J-M-N-R-R1-S-U-V-Z1  |
| 09594               | B-C-C1-C2-F-F1-F3-R-R1-S-V                    | 09704               | B-C-F-F1-F3-R-R1-S-U2-V                    | 09741               | A-B-C1-C2-E2-F-F1-F3-H1-J-L-M-N-R-R1-T-V-W-Y-Z1 | 09812               | B-E2-E3-F-F1-I-J-L-N-R-T-U-V-Z-Z1                |
| 09595               | B-C-C2-F-F1-F3-I3-J-R-R1-S-V-V1-Z1            | 09705               | B-C-C1-C2-F1-F3-M-R-R1-S-U                 | 09742               | A-B-C2-F-F1-F3-J-L-M-N-R-R1-T-V-Z1              | 09813               | A-B-C1-C2-E2-E3-F1-F3-J-L-N-R-R1-T-V-Z1          |
| 09596               | B-F-F1-R-R1-V                                 | 09706               | B-C-C2-F3-M-N-R-S-U-V-Z1                   | 09743               | A-B-C2-F-F1-F3-J-L-M-N-R-R1-T-V-Z1              | 09814               | B-C2-E2-E3-F-F1-F3-I3-J-L-N-R-R1-T-V-Z-Z1        |
| 09599               | B-F-F1-R-R1-V                                 | 09707               | B-C2-F-F1-F3-J-L-M-N-R-R1-T-V-Z1           | 09744               | A-B-C1-C2-F-F1-F3-J-L-M-N-R-R1-T-V-Z1           | 09815               | A-B-C-C2-E-E2-E3-F1-F3-H-H1-J-M-N-R-R1-S-U-V-Z1  |
| 09600               | B-C-C2-F-F1-F3-R-S-U-Z1                       | 09708               | B-C-C1-C2-F-F3-M-R-R1-S-U                  | 09745               | A-B-C2-F-F1-F3-M-N-R-R1-S-V-Z1                  | 09816               | A-B-C1-C2-E2-E3-F1-F3-J-L-N-R-R1-T-V-Z1          |
| 09602               | B-C-C2-F-F1-F3-N-R-S-U-V                      | 09709               | B-C1-C2-E2-F-F1-F3-H-H1-J-L-N-R-R1-T-V-Z1  | 09748               | A-B-C1-C2-F-F1-F3-J-L-M-N-R-R1-T-V-Z1           | 09817               | A-B-C1-C2-E2-E3-F1-F3-H-H1-J-L-M-N-R-R1-T-V-Z1   |
| 09603               | B-C-C2-F-F1-F3-R-S-U-V-Z1                     | 09710               | B-C-C1-F-F1-J-L-M-N-R-R1-T-U-V-Z1          | 09749               | A-B-C2-F-F3-H-N-R-S-U-V-Z1                      | 09818               | A-B-C-C2-F-F3-M-R-S-V-Z1                         |
| 09604               | B-C-C2-F-F1-F3-P-R-S-U-V-Z1                   | 09711               | A-B-C-C2-E2-F-F1-F3-M-N-R-S-T-V-X          | 09750               | A-B-C1-C2-F-F1-F3-J-L-M-N-R-R1-T-V-Z1           | 09819               | A-B-C-C1-C2-E2-F-F1-F3-H-H1-M-R-R1-S-V-Z1        |
| 09605               | B-C-C2-D-F-F3-H-M-R-S-U-V                     | 09712               | A-B-C2-F-F3-H-R-S-U-V-Z1                   | 09751               | B-C-C2-D-E-F-F3-H-M-R-S-U                       | 09820               | A-B-C2-F-F1-F3-H-H1-J-L-M-N-R-R1-T-V-Z1          |
| 09606               | B-C-C2-D-F-F3-H-M-R-S-U-V                     | 09714               | B-C-C1-C2-F-F3-M-R-R1-S-U                  | 09752               | B-C-C2-D-F-F3-H-R-S-U                           | 09821               | A-B-C-C2-F-F3-N-R-S-V-Z1                         |
| 09608               | B-C-F-F3-N-R-S-U-V-Z1                         | 09715               | B-F-F1-J-L-M-N-R-T-V-Z1                    | 09753               | A-B-C-C1-C2-D-E-F1-F3-H-M-N-R-S-V-W-Z1          | 09822               | A-B-C-C2-F-F3-M-R-S-V-Z1                         |
| 09609               | B-C-C2-F-F3-N-R-S-U-V-Z1                      | 09716               | B-C-C2-F-F1-F3-J-L-M-N-R-R1-T-V-Z1         | 09754               | A-B-C-C2-F-F3-H-N-R-S-V-Z1                      | 09823               | A-B-C1-C2-F-F1-F3-J-L-M-N-R-R1-T-V-Z1            |
| 09610               | B-C-C2-F-F1-F3-M-R-S-U-V-Z1                   | 09717               | A-B-C-C2-F3-M-R-S-V-W-Z1                   | 09755               | A-B-C-C1-C2-D-F-F1-F3-J-L-M-N-Q-R1-S-T-V-Z1     | 09824               | A-B-C-C2-F-F3-M-R-S-V-Z1                         |
| 09613               | B-C-C2-F-F3-N-R-S-U-V                         | 09718               | B-F-F1-J-L-M-N-R-T-U-V-Z1                  | 09759               | A-B-C-C1-C2-E2-F-F1-F3-J-L-N-R-R1-T-V-Z1        | 09825               | A-B-C1-C2-F-F1-F3-J-L-M-N-R-R1-T-V-Z1            |
| 09614               | A-B-C1-C2-E2-F-F1-F3-H1-J-L-M-N-R-R1-T-V-W-Z1 | 09719               | B-C-C2-D-F3-M-R-S-U-V-Z1                   | 09761               | B-C2-F-F1-F3-M-R-R1-S-V-Z1                      | 09826               | A-B-C1-C2-E1-E2-E3-F-F1-F3-J-L-M-N-R-R1-T-V-W-Z1 |
| 09618               | B-C-C2-F-F3-R-S-U-Z1                          | 09720               | B-C2-F3-M-R-S-U-V-Z1                       | 09762               | A-B-C2-E3-F-F1-F3-J-L-N-R-R1-T-V-Z1             | 09827               | A-B-F-F1-J-L-M-N-R-T-V-Z1                        |
| 09620               | B-C-C2-F-F3-R-S-U-V-Z1                        | 09722               | A-B-C-C2-F-F3-H-N-R-S-V-Z1                 | 09769               | A-B-C-C1-C2-F-F1-F3-J-L-M-N-R-R1-T-V-Z1         | 09828               | A-B-C1-C2-F-F1-F3-I3-L-N-R-R1-T-V-Z-Z1           |
| 09621               | B-C-F-F3-R-U-Z1                               | 09723               | B-C2-F-F1-F3-J-L-M-N-R-R1-T-V-Z1           | 09777               | A-B-C-C1-C2-E1-F-F1-F3-J-L-M-N-R-R1-T-V-Z1      | 09829               | B-C-N-R-V-Z1                                     |
| 09622               | B-C-C2-F-F3-R-S-U-Z1                          | 09724               | B-C-C1-C2-F-F3-M-R-R1-S-U                  | 09780               | A-B-C2-F-F3-H-N-R-S-V                           | 09830               | B-C-F-F1-F3-J-L-M-N-R-R1-S-T-V-Z1                |
| 09623               | B-C-C2-F-F3-R-S-U-V-Z1                        | 09725               | A-B-C2-F-F3-H-N-Q-R-S-V-V1-Z1              | 09801               | A-B-C1-E2-F-F3-H1-M-N-R-R1-S-V-Z1               | 09831               | B-C1-C2-D-F-F1-F3-H-H1-I3-L-M-N-R-R1-S-T-V-W-Z1  |
| 09624               | B-C-C2-F-F1-F3-I3-L-N-R-R1-T-U-V-Z-Z1         | 09726               | B-F-F1-J-L-M-N-R-T-U-V-Z1                  | 09802               | A-B-C-C2-E-E2-E3-F1-F3-H-H1-J-M-N-R-R1-S-U-V-Z1 | 09832               | A-B-C-C1-C2-E2-E3-F1-F3-H-H1-J-M-N-R-R1-S-V-Z1   |
| 09625               | B-C-C2-F-F3-N-R-S-U-Z1                        | 09727               | A-B-C1-C2-F-F1-F3-J-L-M-N-R-R1-T-V-Z1      | 09803               | A-B-C-C2-E-E2-E3-F1-F3-H-H1-J-M-N-R-R1-S-U-V-Z1 | 09833               | B-C-C2-E2-E3-F-F1-F3-R-R1-S-U-Z1                 |
| 09627               | B-C-C2-F-F3-R-S-U-V-Z1                        | 09728               | A-B-C-C1-C2-F-F1-F3-J-L-N-R-R1-T-V-Z1      | 09804               | A-B-C-C2-F-F1-F3-M-N-R-S-V-Z1                   | 09834               | A-B-C1-C2-F-F1-F3-J-L-M-N-R-R1-V-Z1              |
| 09630               | B-C-C2-F-F3-R-S-U-V                           | 09729               | B-C-C2-F-F3-N-R-R1-S-U-V-Z1                | 09805               | B-C-C2-E2-E3-F-F1-F3-R-R1-S-Z1                  | 09837               | B-E2-E3-F1-F3-R-S-V-Z1                           |
| 09633               | B-C-C2-D-F-F3-M-R-S-U-U1-U2-U3-V-Z1           | 09730               | A-B-C1-C2-F-F1-F3-J-L-M-N-R-R1-T-V-Z1      | 09807               | A-B-C1-C2-E2-F-F1-F3-H1-I3-M-N-R-R1-S-T-V-Z1    | 09838               | B-C-C2-E2-E3-F-F1-F3-R-S-U-Z1                    |
| 09634               | A-B-C2-F-F3-M-N-R-S-V                         | 09731               | A-B-C1-C2-F-F1-F3-J-L-M-N-R-R1-T-V-Z1      |                     |   |                     |  |
| 09636               | B-C-C2-F-F3-R-S-U-V-Z1                        | 09732               | B-F-F3-N-S-V-Z1                            |                     |   |                     |  |
| 09642               | B-C2-F-F1-F3-J-L-M-N-R-T-U-V                  | 09733               | B-F-F3-N-R-S-V-Z1                          |                     |   |                     |  |
| 09643               | B-C-C2-F3-M-R-S-U-V-Z1                        | 09734               | A-B-C-C1-C2-F-F1-F3-I3-J-L-M-N-R-R1-T-V-Z1 |                     |   |                     |  |
| 09645               | B-C-C1-E1-E2-F-F1-F3-M-R-S-U-X-Z1             | 09735               | B-F3-N-R-S-V-Z1                            |                     |   |                     |  |
| 09647               | B-C2-F1-F3-M-N-R-S-U-Z1                       |                     |  |                     |   |                     |  |

| APO/<br>FPO/<br>DPO | See<br>Restrictions                                 | APO/<br>FPO/<br>DPO | See<br>Restrictions                        | APO/<br>FPO/<br>DPO | See<br>Restrictions                        | APO/<br>FPO/<br>DPO | See<br>Restrictions                    |
|---------------------|---|---------------------|--|---------------------|--|---------------------|--|
| 09842               | A-B-C1-C2-F-F1-F3-J-L-N-R-R1-T-V-Z1                 | 09898               | B-C-C1-C2-E2-F-F1-F2-H1-N-R-R1-S-U2-V-Z1   | 34030               | B-C1-C2-F-F1-F3-J-L-M-N-R-R1-T-V-Z1        | 34093               | B-C-C2-F-F1-F3-R-R1-S-V                |
| 09844               | A-B-C1-C2-F-F1-F3-J-L-M-N-R-R1-T-V-Z1               | 09902               | A-B-C1-C2-E2-F-F3-H1-M-R-R1-S-V-Z1         | 34031               | B-C1-C2-F-F1-F3-J-L-M-N-R-R1-T-V-Z1        | 34094               | B-F-F1-F3-R-R1-S-V                     |
| 09845               | A-B-C1-C2-E3-F-F1-F3-J-L-M-N-R-R1-T-V-Z1            | 09903               | B-C1-E2-F1-F3-S-V-Z1                       | 34032               | B-C1-C2-F-F1-F3-J-L-M-N-R-R1-T-V-Z1        | 34095               | B-F-F1-R-R1-V                          |
| 09846               | A-B-C1-C2-F-F1-F3-J-L-N-R-R1-T-V-Z1                 | 09904               | B-C1-E2-F1-F3-S-V-Z1                       | 34033               | B-C1-C2-F-F1-F3-I3-L-M-N-R-T-V-Z1          | 96201               | A-B-F-F1-F3-M-R-S-U                    |
| 09847               | B-C-C2-F-F1-F3-J-L-M-N-R-R1-S-T-V-Z1                | 09908               | A-B-C2-F-F1-F3-N-R-R1-S-V-Z1               | 34034               | B-C1-C2-F-F1-F3-I3-L-M-N-R-R1-T-V-Z1       | 96202               | A-B-C2-F-F1-F3-M-R-S-U                 |
| 09848               | A-B-C2-F-F3-M-R-S-V-Z1                              | 09909               | A-B-C2-F-F1-F3-N-R-R1-S-V-V1-Z1            | 34035               | B-C1-C2-F-F1-F3-H-J-L-M-N-R-R1-T-V-Z1      | 96203               | A-B-F-F1-F3-M-R-S-U                    |
| 09853               | B-C1-C2-E2-F-F1-F3-H1-N-R-R1-S-U2-V-Z1              | 09974               | B-F1-F3-J-L-M-N-R-S-T-U2-V-X-Z1            | 34036               | B-C1-C2-F-F1-F3-J-L-M-N-R-R1-T-V-Z1        | 96205               | A-B-C-C2-F-F1-F3-M-R-S-U               |
| 09854               | A-B-C1-C2-F-F1-F3-J-L-N-R-R1-S-T-V-Z1               | 09975               | B-F1-F3-I3-L-M-N-R-S-T-U2-V-X-Z1           | 34037               | B-C-C1-C2-F-F1-F3-H-J-L-M-N-R-R1-T-V-Z1    | 96206               | A-B-C-C2-F-F1-F3-M-R-S-U               |
| 09855               | A-B-C-C1-C2-E2-F-F1-F3-H1-M-R-R1-S-U2-V-Z1          | 09976               | B-F1-F3-J-L-M-N-R-S-T-U2-V-X-Z1            | 34039               | B-C1-C2-F-F1-J-L-M-N-T-V-Z1                | 96207               | A-B-F-F1-F3-M-R-S-U-V                  |
| 09857               | A-B-C2-E2-F-F1-F3-13-L-M-N-R-R1-S-T-V-Z1            | 09977               | B-F1-F3-J-L-M-N-R-S-T-U2-V-X-Z1            | 34041               | B-C1-C2-F-F1-F3-J-L-M-N-R-R1-T-V-Z1        | 96208               | A-B-F-F1-F3-M-R-S-U                    |
| 09858               | A-B-C-C1-C2-E2-E3-F1-F3-H-H1-J-M-N-R-R1-S-U-V-Z1    | 09978               | B-C-C2-D-E1-F-F1-F3-H-H1-M-N-R-R1-S-T-X-Z1 | 34042               | A-B-C-F-F1-F3-M-N-R-S-U-V-W-Z1             | 96209               | A-B-C1-C2-F-F1-J-L-M-N-T-U-V-Z1        |
| 09859               | B-C-C1-C2-E2-E3-F-F1-F3-H1-R-R1-S-U-Z1              | 09980               | B-C-C1-C2-F1-F3-J-L-M-N-R-R1-S-T-V-X-Z1    | 34055               | B-C1-C2-F-F1-F3-J-L-M-N-R-R1-T-V-Z1        | 96210               | A-B-C1-C2-F-F1-F3-I3-L-M-N-R-R1-T-V-Z1 |
| 09860               | A-B-C2-F-F1-F3-J-L-M-N-R-R1-S-T-V-Z1                | 09981               | B-C-C1-C2-F1-F3-J-L-M-N-R-R1-S-T-V-X-Z1    | 34058               | B-C2-F-F1-F2-F3-R-R1-S-V-Z1                | 96212               | B-F-F1-F2-H-M-W-Z1                     |
| 09862               | A-B-C-C2-F-F1-F3-I3-L-M-N-R-R1-S-T-V-X-Z1           | 09982               | B-C-C1-C2-F1-F3-J-L-M-N-R-R1-S-T-V-X-Z1    | 34060               | B-C1-C2-E2-F-F1-F3-J-L-M-N-R-R1-T-V-Z1     | 96213               | A-B-C-C2-F1-F3-N-R-S                   |
| 09864               | A-B-C-C1-C2-E2-F1-F3-L-M-N-R-R1-S-T-V-W-Z1          | 09983               | B-C-C1-C2-F1-F3-J-L-M-N-R-R1-S-T-V-X-Z1    | 34066               | B-C1-C2-F-F1-F3-I3-J-L-M-N-R-R1-S-T-V-X-Z1 | 96214               | A-B-C-C2-F1-F3-R-S-U                   |
| 09867               | A-B-C-C1-C2-E2-F1-F3-L-M-N-R-R1-S-T-V-W-Z1          | 09984               | B-C-C1-C2-F1-F3-J-L-M-N-R-R1-S-T-V-X-Z1    | 34067               | B-C1-C2-F-F1-F3-J-L-M-N-R-R1-S-T-V-X-Z1    | 96218               | A-B-F-F1-F3-M-R-S-U                    |
| 09869               | A-B-C1-C2-E2-F1-F3-L-M-N-R-R1-S-T-V-W-Z1            | 34001               | A-B-C1-C2-F-F1-F3-J-L-M-N-R-R1-S-T-V-Z1    | 34068               | B-C1-C2-F-F1-F3-J-L-M-N-R-R1-S-T-V-X-Z1    | 96224               | A-B-F-F1-F3-M-R-S-U                    |
| 09870               | A-B-C1-C2-E2-F-F1-F3-H1-I3-L-M-N-R-R1-S-T-U4-V-Z1   | 34002               | B-C1-C2-F-F1-F3-J-L-M-N-R-R1-T-V-Z1        | 34069               | B-C1-C2-F-F1-F3-I3-J-L-M-N-R-R1-S-T-V-X-Z1 | 96251               | A-B-F-F1-F3-M-R-S-U                    |
| 09873               | A-B-C1-C2-E2-F-F1-F3-H1-I3-L-M-N-R-R1-S-T-U-U4-V-Z1 | 34004               | B-C1-C2-F-F1-F3-J-L-M-N-R-R1-T-V-Z1        | 34072               | B-C-C2-F1-F3-J-L-M-N-R-S-T-V-X-Z1          | 96257               | A-B-F-F1-F3-S-U                        |
| 09874               | A-B-C1-C2-E2-F-F1-F3-H1-I3-L-M-N-R-R1-S-T-U-U4-V-Z1 | 34007               | B-F-F1-H-J-M-N-R-R1-V-Z1                   | 34078               | B-F1-F3-N-R-S-V-Z1                         | 96258               | A-F-F3-M-P-R-S-U                       |
| 09875               | A-B-C1-C2-E2-F-F1-F3-H1-I3-L-M-N-R-R1-S-T-U-U4-V-Z1 | 34008               | B-C1-C2-D-E1-F-F1-H-H1-J-L-M-N-R-R1-T-V-Z1 | 34080               | B-F-F1-R-R1-V                              | 96260               | A-B-F-F1-F3-M-R-S-U                    |
| 09877               | A-B-C-C2-E-E2-E3-F1-F3-H-H1-J-M-N-R-R1-S-U-V-Z1     | 34009               | B-C2-F-F1-F3-R-S-V                         | 34081               | B-F-F1-R-R1-V                              | 96262               | A-B-C2-F-F1-F3-R-S-U                   |
| 09880               | A-B-C1-C2-E2-F-F1-F3-H1-J-L-N-R-R1-S-T-U-V-Z1       | 34010               | B-C2-F-F1-F3-R-S-V                         | 34082               | B-F-F1-R-R1-V                              | 96264               | A-B-C-C2-F1-F3-R-S-U                   |
| 09892               | A-B-C1-C2-E2-F-F1-F3-J-L-M-N-R-R1-T-V-Z1            | 34011               | B-C1-C2-E2-F-F1-F3-J-L-M-N-R-R1-T-V-Z1     | 34083               | B-F-F1-R-R1-V                              | 96269               | A-B-C-C2-F1-F2-F3-R-S-U-Z1             |
| 09895               | A-B-C1-C2-E2-F-F1-F3-J-L-M-N-R-R1-T-V-Z1            | 34020               | B-C1-C2-F-F1-F3-J-L-M-N-R-R1-T-V-Z1        | 34084               | B-F-F1-R-R1-V                              | 96271               | A-B-F-F3-M-P-R-S-U                     |
|                     |   | 34021               | B-C1-C2-F-F1-F3-J-L-M-N-R-R1-T-V-Z1        | 34085               | B-C-C1-C2-E2-E3-F-F1-F3-H1-J-R-R1-S-T-V-V1 | 96273               | A-B-C2-F-F1-F3-M-R-S-U                 |
|                     |   | 34022               | B-C1-C2-F-F1-F3-J-L-M-N-R-R1-T-V-Z1        | 34086               | B-C-C1-C2-E2-E3-F-F1-F3-H1-J-R-R1-S-T-V-V1 | 96275               | A-B-F-F1-F3-M-R-S-U                    |
|                     |   | 34023               | B-C1-C2-F-F1-F3-J-L-M-N-R-R1-T-V-Z1        | 34087               | B-C-C2-E2-F-F1-F3-R-R1-S-V                 | 96276               | A-B-C-C2-F1-F3-R-S                     |
|                     |   | 34024               | B-C1-C2-F-F1-F3-J-L-M-N-R-R1-T-V-Z1        | 34088               | B-C-C2-F-F1-F3-R-R1-S-V                    | 96278               | A-B-C-C2-F1-F3-R-S-U                   |
|                     |   | 34025               | B-F-F1-F3-J-L-M-N-R-R1-T-V-Z1              | 34089               | B-C-C2-F-F1-F3-R-R1-S-V                    | 96283               | A-B-F-F1-F3-S-U                        |
|                     |   |                     |  | 34090               | B-C-C2-F-F1-F3-R-R1-S-V                    | 96284               | A-B-C2-F-F1-F3-M-R-S-U                 |
|                     |   |                     |  | 34091               | B-C-C2-E2-E3-F-F1-F3-R-R1-S-V-Z1           | 96297               | A-B-F-F1-F3-R-S-U                      |
|                     |   |                     |  | 34092               | B-C-C2-F-F1-F3-R-R1-S-V-Z1                 | 96300               | A-B-F3-M-R-S-V-Z1                      |
|                     |   |                     |  |                     |  | 96301               | A-B-C-C2-F-F3-M-N-R-S-U2-W             |
|                     |   |                     |  |                     |  | 96303               | B-C1-C2-F-F1-H-J-L-M-N-T-V-W-Z1        |

| APO/<br>FPO/<br>DPO | See<br>Restrictions               | APO/<br>FPO/<br>DPO | See<br>Restrictions                            | APO/<br>FPO/<br>DPO | See<br>Restrictions                                | APO/<br>FPO/<br>DPO | See<br>Restrictions            |
|---------------------|-----------------------------------|---------------------|--|---------------------|--|---------------------|--------------------------------|
| 96306               | B-F-F1-F2-F3-H-M-R-S-W-Z1         | 96379               | B-C-C2-F-F3-M-R-S-W                            | 96549               | A-B-C1-C2-F-F1-H-J-L-M-N-R-R1-S-T-V-Z1             | 96650               | B-F-F1-R-R1-V                  |
| 96309               | B-C-C2-F-F1-F3-M-N-R-S-V-W        | 96380               | B-C-C2-F-F3-M-R-S-W                            | 96550               | A-B-H-M-N-U-V-Z1                                   | 96657               | B-C-C2-F-F1-F3-R-R1-S-V        |
| 96310               | B-C-C2-F-F3-M-R-S-W               | 96382               | B-C-C2-F-F3-M-R-S-W                            | 96551               | A-B-C1-C2-F-F1-H-J-L-M-N-R-R1-S-T-V-Z1             | 96660               | B-C-C2-F-F1-F3-R-R1-S-V        |
| 96311               | B-C-C2-F-F3-M-R-S-W               | 96384               | B-C-C2-F-F3-M-R-S-W                            | 96552               | B-Z1   | 96661               | B-C-C2-F-F1-F3-R-R1-S-V        |
| 96315               | B-C-C2-F-F3-M-R-S-W               | 96385               | B-C-C2-F-F3-M-R-S-W                            | 96553               | A-B-C-C2-F-F1-F3-H-M-N-R-S-U                       | 96662               | B-C-C2-F-F1-F3-R-R1-S-V        |
| 96319               | B-C-C2-F3-M-R-S-W                 | 96386               | B-C-C2-F-F3-M-R-S-W                            | 96554               | A-B-C1-C2-F-F1-H-J-L-M-N-R-R1-S-T-V-Z1             | 96663               | B-C-C2-F-F1-F3-R-R1-S-V        |
| 96321               | B-F-F1-F2-F3-H-M-R-S-W-Z1         | 96387               | B-C-C2-F-F3-M-R-S-W                            | 96555               | A-B-F-F3-M-R-S-V                                   | 96664               | B-C-C2-F-F1-F3-R-R1-S-V        |
| 96322               | B-F-F1-F2-F3-H-M-R-S-W-Z1         | 96388               | B-C-C2-F-F3-M-R-S-W                            | 96557               | A-B-F-F3-M-R-S-V                                   | 96665               | B-C-C2-F-F1-F3-R-R1-S-V        |
| 96326               | B-C-C2-F-F3-M-R-S-W               | 96389               | B-C-C2-F-F3-M-R-S-W                            | 96562               | A-B-C1-C2-D-E2-E3-F-F1-H-H1-I3-L-M-N-R-R1-S-T-V-Z1 | 96666               | B-C-C2-F-F1-F3-R-R1-S-V        |
| 96328               | B-C-C2-F3-M-R-S-W                 | 96401               | B-C-F-F3-N-R-S-V-V1-Z1                         | 96577               | A-B-C2-F-F3-H-M-N-R-S-U                            | 96667               | B-C-C2-F-F1-F3-R-R1-S-V        |
| 96331               | A-B-C-C2-F-F1-F3-J-L-M-N-R-S-U2-W | 96502               | A-B-C-C1-C2-F-F1-F3-J-M-N-R-R1-S-T-U-V         | 96578               | B-C-C2-F1-F3-H-J-N-R-S                             | 96668               | B-C-C2-F-F1-F3-R-R1-S-V        |
| 96336               | B-C-C2-F3-M-R-S-V-W               | 96504               | A-B-C-C1-C2-F-F1-F3-I3-L-M-N-R-R1-T-V-W-Z-Z1   | 96595               | B-F-F3-R-S-V-Z1                                    | 96669               | B-C-C2-F-F1-F3-R-R1-S-V        |
| 96337               | B-C2-F-F1-F3-M-R-R1-S-W           | 96505               | A-B-C-C1-C2-F-F1-F3-I3-L-M-N-R-R1-S-T-V-W-Z-Z1 | 96598               | B-C2-F3-I3-N-R-S-V-V1                              | 96670               | B-C-C2-F-F1-F3-R-R1-S-V        |
| 96338               | A-B-C-C2-F-F3-M-R-S-U2-W          | 96507               | A-B-C1-C2-F-F1-H-J-L-M-N-T-V-Z1                | 96599               | B-C2-F3-N-R-S-V                                    | 96671               | B-C-C2-F-F1-F3-R-R1-S-V        |
| 96339               | A-B-C-C2-F-F3-M-N-R-S-U2-W        | 96510               | B-I3-N-V                                       | 96601               | B-V  | 96672               | B-C-C2-F-F1-F3-R-R1-S-V        |
| 96343               | A-B-F-F3-M-P-R-S-U2               | 96511               | B-I3-N-V                                       | 96602               | B-V  | 96673               | B-C-C2-F-F1-F3-R-R1-S-V        |
| 96346               | B-F-F1-F2-F3-H-M-R-S-W-Z1         | 96515               | B-C-D-E1-F-F1-F3-H-H1-M-N-R-S-T-Z1             | 96603               | B-V  | 96674               | B-C-C2-F-F1-F3-R-R1-S-V        |
| 96347               | B-C2-F-F1-F2-F3-H-M-R-S-W-Z1      | 96516               | B-C-C2-D-E1-E2-F-F1-F3-H-H1-M-N-R-S-T-Z1       | 96604               | B-V  | 96675               | B-C-C2-F-F1-F3-R-R1-S-V        |
| 96349               | B-C-C2-F-F1-F2-F3-H-M-R-S-Z1      | 96517               | B-C-D-E1-E2-F-F1-F3-H-H1-M-N-R-T-U-V-Z1        | 96605               | B-V  | 96676               | B-C-C2-F-F1-F3-R-R1-S-V        |
| 96350               | B-F-F1-F2-F3-H-M-R-S-W-Z1         | 96520               | B-F-N-U3-V                                     | 96606               | B-C-C2-F-F3-M-R-S-V-W                              | 96677               | B-C-C2-F-F1-F3-R-R1-S-V        |
| 96351               | B-C-C2-F-F1-F2-F3-H-M-R-R1-S-T-Z1 | 96521               | B-C1-C2-F-F1-J-L-M-N-R-R1-S-T-V-Z1             | 96607               | B-V  | 96678               | B-C-C2-F-F1-F3-R-R1-S-V        |
| 96362               | B-C2-F-F1-F2-F3-H-M-R-S-W-Z1      | 96530               | A-B-C1-C2-F-F1-H-H1-J-L-M-N-R-R1-S-T-V-Z1      | 96608               | B-E2-F-H1-R1-U2-V-Z1                               | 96679               | B-C-C2-F-F1-F3-R-R1-S-V        |
| 96365               | B-C-C2-F3-M-R-S-W-V               | 96531               | A-B-C-C2-F-F1-F3-H-M-N-R-S-U-V                 | 96609               | B-E2-F-H1-R1-U2-V-Z1                               | 96681               | B-V                            |
| 96367               | B-C-C2-F3-L-M-R-S-W               | 96532               | A-B-C1-C2-F-F1-H-J-L-M-N-R-R1-S-T-V-Z1         | 96610               | B-C-C2-F-F3-H1-R-R1-S-U2-V-Z1                      | 96682               | B-C-C2-F-F1-F3-R-R1-S-V        |
| 96368               | B-C-C2-F3-M-R-S-W                 | 96533               | A-B-C-C2-F-F1-F2-F3-R-R1-S-U-V-Z1              | 96611               | B-C-C2-F-F3-H1-R-R1-S-U2-V-Z1                      | 96683               | B-C-C2-F-F1-F3-R-R1-S-V        |
| 96370               | B-F-F1-F2-H-M-W-Z1                | 96535               | A-B-C1-C2-F-F1-J-L-M-N-R-R1-S-T-V-Z1           | 96612               | B-C-C2-F-F3-H1-R-R1-S-U2-V-Z1                      | 96686               | B-C-C2-F-F1-F3-R-R1-S-V        |
| 96371               | B-C-C2-F-F3-M-R-S-W               | 96537               | B-V-Z1   | 96613               | B-C-C2-F-F3-H1-R-R1-S-U2-V-Z1                      | 96688               | B-C-C2-F-F1-F3-R-R1-S-V        |
| 96372               | B-C-C2-F-F3-M-R-S-W               | 96540               | B-F1-F2-F3-S-V-Z1                              | 96615               | B-F-F1-R-R1-V                                      | 96689               | B-C-C2-F-F1-F3-R-R1-S-V        |
| 96373               | B-C-C2-F-F3-M-R-S-W               | <b>96542</b>        | <b>B-C-C2-F-F1-F2-F3-R-S</b>                   | 96616               | B-C2-F-F1-F3-R-R1-S-V                              | 96691               | B-C-C2-F-F1-F3-R-R1-S-V        |
| 96374               | B-C-C2-F-F3-M-R-S-W               | <b>96543</b>        | <b>B-C-C2-F-F1-F2-F3-P-R-S</b>                 | 96619               | B-C-C2-F1-F3-R-S-V                                 | 96692               | B-C-C2-F-F1-F3-R-R1-S-V        |
| 96375               | B-C-C2-F-F3-M-R-S-W               | 96548               | A-B-C2-F-F1-F3-H-M-R-S-U                       | 96620               | B-C-C2-F-F1-F3-R-R1-S-V                            | 96693               | B-C-C2-F-F1-F3-R-R1-S-V        |
| 96376               | B-C-C2-F-F3-M-R-S-W               |                     |  | 96628               | B-C-C2-F-F1-F3-R-R1-S-V                            | 96694               | B-C-C2-F-F1-F3-I3-J-R-R1-S-V-Z |
| 96377               | B-C-C2-F-F3-M-R-S-W               |                     |  | 96629               | B-C-C2-F-F1-F3-R-R1-S-V                            | 96695               | B-C-C2-F-F1-F3-R-R1-S-V        |
| 96378               | B-C-C2-F-F3-M-R-S-W               |                     |  | 96632               | B-C-C2-F-F1-F3-R-R1-S-V                            | 96696               | B-F-F1-R-R1-V                  |
|                     |                                   |                     |  | 96633               | B-V  | 96698               | B-C-C2-F-F1-F3-R-R1-S-V        |
|                     |                                   |                     |  | 96641               | B-V  |                     |                                |
|                     |                                   |                     |  | 96642               | B-V  |                     |                                |
|                     |                                   |                     |  | 96643               | B-F-F1-F3-R-R1-S-V                                 |                     |                                |
|                     |                                   |                     |  | 96644               | B-V  |                     |                                |
|                     |                                   |                     |  | 96645               | B-V  |                     |                                |
|                     |                                   |                     |  | 96649               | B-C-C2-F-F1-F3-R-R1-S-V                            |                     |                                |

## RESTRICTIONS

## LEGEND

PS Form 2976, *Customs — CN 22 (Old C 1) and Sender's Declaration* (green label)

PS Form 2976-A, *Customs Declaration and Dispatch Note*

PS Form 2976-B, *Priority Mail Express International Shipping Label and Customs Form*

|        |   |
|--------|---|
| ATF    | = Bureau of Alcohol, Tobacco, Firearms, and Explosives              |
| Box C  | = Department of State (DOS) contractor personnel                    |
| Box R  | = Retired military personnel  |
| DPO    | = Diplomatic Post Office  |
| MPO    | = Military Post Office  |
| PACT   | = Prevent All Cigarette Trafficking Act                             |
| PAL    | = Parcel Airlift  |
| PMEMS  | = Priority Mail Express Military Service                            |
| PUB 52 | = Publication 52, <i>Hazardous, Restricted, and Perishable Mail</i> |
| SAM    | = Space Available Mail  |
| USDA   | = United States Department of Agriculture                           |

**Note:** Mail order catalogs are prohibited as SAM or PAL mail.

**A.** Securities, currency, or precious metals, including in their raw, unmanufactured state, are prohibited. Official Mail shipments are exempt from this restriction.

**A1.** Reserved for future use.

**A2.** Reserved for future use.

**B.** Other than for PMEMS and the exceptions listed below, a customs declaration PS Form 2976 or PS Form 2976-A is required for all items weighing 16 ounces or more, and for all items (regardless of weight) containing potentially dutiable mail contents (e.g., merchandise or goods) addressed to or from this ZIP Code. Other than the exceptions listed below, all PMEMS mailpieces (regardless of mail contents or weight) addressed to or from this ZIP Code must bear a properly completed PS Form 2976-B. The surface area of the address side of the mailpiece must be large enough to contain the applicable customs declaration. The following exceptions apply to known mailers, who for this purpose are defined as follows:

- Business mailers who enter volume mailings through business mail entry units or other bulk mail acceptance locations, pay postage through advance deposit accounts, use permit imprints for postage payment, and submit completed postage statements at the time of entry that certify that the mailpieces contain no dangerous materials that are prohibited by postal regulations. Such business mailers are exempt from providing customs documentation on non-dutiable letters and printed matter.
- All federal, state, and local government agencies whose mailings are regarded as "Official Mail." Such agencies are exempt from providing customs documentation, except for any items addressed to an MPO or DPO to which restriction "B2" applies.

**B2.** All federal, state, and local government agencies must complete customs documentation when sending potentially dutiable mail addressed to or from this MPO or DPO.

**C.** Cigarettes and other tobacco products, including tobacco leaves, chewing and pipe tobacco, snuff, and cigars are prohibited, including those that are authorized in Publication 52 under PACT.

**C1.** Obscene and horror articles, images, prints, paintings, cards, films, videotapes, comic books, etc., are prohibited.

**C2.** E-cigarettes and related products (e.g., nicotine liquids, e-liquids, parts, or supplies) are prohibited.

**D.** Coffee is prohibited.

**E.** Medicines (prescription, over-the-counter, vitamins, and supplements) are prohibited when mailed to individuals for human or animal use. This prohibition does not apply when medicines are sent as Official Mail only between specifically designated agencies such as pharmaceutical distributors, hospitals, clinics, and pharmacies.

**E1.** Mailers are responsible to ensure that all medicines and vaccines conform to host nation laws.

**E2.** Any matter depicting nude or seminude persons, pornographic, or sexual items are prohibited. Non-authorized political materials are prohibited. Religious materials contrary to the Islamic faith are prohibited in bulk quantities, but individual items for the personal use of the addressee are permissible.

**E3.** Radio transceivers, cordless/cellular telephones, global positioning systems, scanners, base stations, and handheld transmitters are prohibited.

**F.** Firearms of any type are prohibited, except firearms mailed to or by official U.S. government agencies. This restriction does not apply to firearms mailed from this MPO ZIP Code, provided ATF and USPS regulations are met. Antique firearms do not require an ATF form.

**F1.** Weapons of any type are prohibited.

**F2.** Mailing firearms to or from this MPO ZIP Code is restricted to one shotgun and one single shot .22 caliber rifle per individual.

**F3.** Replica weapons and inert explosive devices (such as grenades) and weapons parts are prohibited.

**G.** Parcels of any class are prohibited.

**H.** Meats, including preserved meats, bones, skin, hair, feathers, horns or hoofs of hoofed animals, and wool samples whether hermetically sealed or not, are prohibited.

**H1.** Pork or pork by-products are prohibited.

**I.** Reserved for future use.

**I1.** Reserved for future use.

**I2.** Reserved for future use.

**I3.** Mail of all classes must fit in a mail sack. Mail may not exceed the following dimensions:

- Maximum length 27 inches.
- Maximum width 14 inches.
- Maximum height 14 inches.

**J.** Standard Post and Parcel Select parcels may not exceed 108 inches in length and girth combined.

**K.** Reserved for future use.

**L.** All Official Mail is prohibited.

**M.** Fruits, vegetables, live animals, and live plants are prohibited.

**N.** Registered Mail service is prohibited.

**O.** Reserved for future use.

**P.** Official Mail only.

**Q.** Mail may not exceed 66 pounds, and size is limited to 42 inches maximum length and 72 inches maximum length and girth combined.

**R.** All alcoholic beverages, including those mailable under Publication 52, Part 421, are prohibited.

**R1.** Materials used in the production of alcoholic beverages (i.e., distilling material, hops, malts, yeast, etc.) are prohibited.

**S.** Synthetic cannabinoids used to stimulate the central nervous system commonly known as "synthetic marijuana," "K2," or "Spice" are prohibited.

**T.** Mailings of household shipments and case lots of food to or from an MPO require military transportation office approval prior to mailing. Mailings to or from a DPO require pre-approval from the Diplomatic Pouch and Mail Director.

**U.** Mail addressed to Retirees (Box R) is limited to 16 ounces and up to a 90-day supply of TRICARE medications. This restriction does not apply to mail endorsed "Free Matter for the Blind or Handicapped."

**U1.** Mail is limited to First-Class Mail items, including audio and video media, weighing 13 ounces or less. This limitation does not apply to Official Mail.

**U2.** Retirees (Box R) are not authorized mail service.

**U3.** Reserved for future use.

**U4.** Mail addressed to Box C is limited to 2 lbs.

**V.** PMEMS is not available.

**V1.** Electronic Delivery status information for Extra Services is not available on *USPS.com*. Manual record of delivery may be available upon request.

**W.** Hermetically sealed packages of meat products bearing USDA certification, such as dried beef, salami, and sausage, may be mailed. 200 grams of tobacco per parcel are permitted duty free.

**X.** Cremated remains are prohibited.

**Y.** Mail is limited to First-Class Mail and Priority Mail items only. This restriction also applies to Official Mail.

**Z.** No outside pieces (OSPs).

**Z1.** The following restriction is applicable only to International Service Centers (ISC)/Exchange Offices. An Anti-Pilferage Seal (Item No O817E or O818A) is required on all pouches and sacks.

## Thrift Savings Plan Fact Sheet

| ANNUAL RETURNS | G Fund | F Fund | U.S. Aggregate Index | C Fund | S&P 500 Stock Index | S Fund | Dow Jones U.S. Completion TSM Index | I Fund | EAFE Stock Index |
|----------------|--------|--------|----------------------|--------|---------------------|--------|-------------------------------------|--------|------------------|
| 2015           | 2.04   | 0.91   | 0.55                 | 1.46   | 1.38                | -2.92  | -3.42                               | -0.51  | -0.81            |
| 2016           | 1.82   | 2.91   | 2.65                 | 12.01  | 11.96               | 16.35  | 15.75                               | 2.10   | 1.00             |
| 2017           | 2.33   | 3.82   | 3.54                 | 21.82  | 21.83               | 18.22  | 18.12                               | 25.42  | 25.03            |
| 2018           | 2.91   | 0.15   | 0.01                 | -4.41  | -4.38               | -9.26  | -9.57                               | -13.43 | -13.79           |
| 2019           | 2.24   | 8.68   | 8.72                 | 31.45  | 31.49               | 27.97  | 27.94                               | 22.47  | 22.01            |
| 2020           | 0.97   | 7.50   | 7.51                 | 18.31  | 18.40               | 31.85  | 32.17                               | 8.17   | 7.82             |
| 2021           | 1.38   | -1.46  | -1.54                | 28.68  | 28.71               | 12.45  | 12.35                               | 11.45  | 11.26            |
| 2022           | 2.98   | -12.83 | -13.01               | -18.13 | -18.11              | -26.26 | -26.54                              | -13.94 | -14.45           |

| MONTHLY RETURNS | G Fund      | F Fund      | U.S. Aggregate Index | C Fund      | S&P 500 Stock Index | S * Fund     | Dow Jones U.S. Completion TSM Index | I * Fund    | EAFE Stock Index |
|-----------------|-------------|-------------|----------------------|-------------|---------------------|--------------|-------------------------------------|-------------|------------------|
| <b>2022</b>     |             |             |                      |             |                     |              |                                     |             |                  |
| Feb             | 0.14        | -1.08       | -1.12                | -2.99       | -2.99               | 0.03         | -0.02                               | -2.61       | -1.77            |
| Mar             | 0.17        | -2.73       | -2.78                | 3.72        | 3.71                | 0.90         | 0.86                                | -0.33       | 0.64             |
| Apr             | 0.20        | -3.75       | -3.79                | -8.72       | -8.72               | -10.57       | -10.58                              | -6.39       | -6.47            |
| May             | 0.21        | 1.13        | 0.64                 | -1.65       | 0.18                | -3.53        | -2.24                               | 1.19        | 0.75             |
| June            | 0.29        | -1.94       | -1.57                | -6.55       | -8.25               | -7.95        | -9.26                               | -8.21       | -9.28            |
| July            | 0.26        | 2.47        | 2.44                 | 9.22        | 9.22                | 10.32        | 10.26                               | 5.15        | 4.98             |
| Aug             | 0.25        | -2.80       | -2.83                | -4.08       | -4.08               | -2.08        | -2.11                               | -5.79       | -4.75            |
| Sept            | 0.28        | -4.31       | -4.32                | -9.21       | -9.21               | -9.91        | -9.93                               | -9.40       | -9.35            |
| Oct             | 0.34        | -1.26       | -1.30                | 8.10        | 8.10                | 8.59         | 8.53                                | 5.98        | 5.38             |
| Nov             | 0.35        | 3.70        | 3.68                 | 5.58        | 5.59                | 3.59         | 3.59                                | 13.72       | 11.26            |
| Dec             | 0.32        | -0.65       | -0.45                | -5.78       | -5.76               | -6.55        | -6.53                               | -1.85       | 0.08             |
| <b>2023</b>     |             |             |                      |             |                     |              |                                     |             |                  |
| Jan             | 0.34        | 3.25        | 3.08                 | 6.28        | 6.28                | 10.82        | 10.80                               | 8.43        | 8.10             |
| <b>YTD</b>      | <b>0.34</b> | <b>3.25</b> | <b>3.08</b>          | <b>6.28</b> | <b>6.28</b>         | <b>10.82</b> | <b>10.80</b>                        | <b>8.43</b> | <b>8.10</b>      |

The G Fund is managed internally by the Federal Retirement Thrift Investment Board. Assets of the F, C, S, and I Funds are managed externally. The Board currently has contracts with BlackRock Institutional Trust Company, N.A., to manage the F, C, S, and I Fund assets. The F, C, S, and I Funds invest in commingled trust funds, in which the assets of tax-deferred employee benefit plans are combined and invested together. The F, C, S, and I Funds and the BlackRock funds are passively managed index funds. Future performance of the funds will vary and may be significantly different from the returns shown above. See the *Summary of the*

*Thrift Savings Plan* for detailed information about the funds and their investment risks. The monthly returns of the TSP Funds represent net earnings for the month after deduction of accrued administrative expenses and, except for the G Fund, after deduction of trading costs and accrued investment management fees as well. The returns for the four indexes shown do not include any of these deductions.

\* Implemented May 2001.

**See next page for L Funds.**

**L Funds**

| <b>Annual Returns</b> | <b>L Income</b> | <b>L 2020</b> | <b>L 2030</b> | <b>L 2040</b> | <b>L 2050</b> |
|-----------------------|-----------------|---------------|---------------|---------------|---------------|
| 2015                  | 1.85            | 1.35          | 1.04          | 0.73          | 0.45          |
| 2016                  | 3.58            | 5.47          | 7.07          | 7.90          | 8.65          |
| 2017                  | 6.19            | 9.86          | 14.54         | 16.77         | 18.81         |
| 2018                  | 0.71            | -0.36         | -3.58         | -4.89         | -6.02         |
| 2019                  | 7.60            | 9.38          | 17.60         | 20.69         | 23.33         |
| 2020                  | 5.15            |               | 11.26         | 13.16         | 14.79         |

| <b>Annual Returns</b> | <b>L Income</b> | <b>L 2025</b> | <b>L 2030</b> | <b>L 2035</b> | <b>L 2040</b> | <b>L 2045</b> | <b>L 2050</b> | <b>L 2055</b> | <b>L 2060</b> | <b>L 2065</b> |
|-----------------------|-----------------|---------------|---------------|---------------|---------------|---------------|---------------|---------------|---------------|---------------|
| 2021                  | 5.42            | 9.75          | 12.37         | 13.43         | 14.51         | 15.40         | 16.34         | 19.90         | 19.90         | 19.90         |
| 2022                  | -2.70           | -6.72         | -10.32        | -11.65        | -12.90        | -14.03        | -15.05        | -17.60        | -17.61        | -17.62        |

| <b>Monthly Returns</b> | <b>L Income</b> | <b>L 2025</b> | <b>L 2030</b> | <b>L 2035</b> | <b>L 2040</b> | <b>L 2045</b> | <b>L 2050</b> | <b>L 2055</b> | <b>L 2060</b> | <b>L 2065</b> |
|------------------------|-----------------|---------------|---------------|---------------|---------------|---------------|---------------|---------------|---------------|---------------|
| <b>2022</b>            |                 |               |               |               |               |               |               |               |               |               |
| Feb                    | -0.51           | -1.01         | -1.45         | -1.61         | -1.76         | -1.89         | -2.01         | -2.38         | -2.38         | -2.38         |
| Mar                    | 0.49            | 0.85          | 1.14          | 1.21          | 1.29          | 1.34          | 1.42          | 1.88          | 1.88          | 1.87          |
| Apr                    | -2.04           | -3.59         | -5.12         | -5.63         | -6.12         | -6.56         | -6.97         | -8.11         | -8.11         | -8.11         |
| May                    | 0.04            | -0.15         | -0.35         | -0.41         | -0.48         | -0.54         | -0.61         | -0.89         | -0.89         | -0.89         |
| June                   | -1.60           | -2.98         | -4.37         | -4.84         | -5.29         | -5.69         | -6.07         | -7.25         | -7.25         | -7.25         |
| July                   | 2.21            | 3.50          | 5.00          | 5.47          | 5.92          | 6.33          | 6.71          | 7.89          | 7.90          | 7.90          |
| Aug                    | -1.04           | -1.83         | -2.74         | -3.03         | -3.30         | -3.55         | -3.77         | -4.36         | -4.36         | -4.36         |
| Sept                   | -2.33           | -3.98         | -5.85         | -6.44         | -7.01         | -7.50         | -7.97         | -9.29         | -9.29         | -9.29         |
| Oct                    | 1.98            | 3.07          | 4.52          | 4.91          | 5.32          | 5.66          | 6.02          | 7.36          | 7.36          | 7.36          |
| Nov                    | 2.41            | 3.62          | 5.21          | 5.69          | 6.15          | 6.55          | 6.93          | 8.03          | 8.03          | 8.03          |
| Dec                    | -0.90           | -1.65         | -2.64         | -2.93         | -3.22         | -3.47         | -3.71         | -4.48         | -4.49         | -4.49         |
| <b>2023</b>            |                 |               |               |               |               |               |               |               |               |               |
| Jan                    | 2.26            | 3.28          | 4.87          | 5.33          | 5.78          | 6.17          | 6.54          | 7.62          | 7.62          | 7.63          |
| <b>YTD</b>             | <b>2.26</b>     | <b>3.28</b>   | <b>4.87</b>   | <b>5.33</b>   | <b>5.78</b>   | <b>6.17</b>   | <b>6.54</b>   | <b>7.62</b>   | <b>7.62</b>   | <b>7.63</b>   |

The TSP also added six new L Funds that have 5-year increments rather than the previous 10-year increments.

## Freely Associated States Restrictions

We list the mailing restrictions for Freely Associated States (FAS) in the Pull-Out section of the *Postal Bulletin*. All FAS Restrictions will be updated periodically.

### Freely Associated States

Mail addressed to freely associated states is subject to certain conditions or restrictions of mailing regarding content, preparation, and handling. The following FAS Restrictions table outlines these conditions as listed by each affected FAS ZIP Code™ through the use of footnoted mailing restrictions codes (see the [Restrictions](#) following the table). For more information on available extra services for FAS destinations, see *Mailing Standards of the United States Postal Service, Domestic Mail Manual (DMM®)*, part 503.

Acceptance clerks must use the table with the Retail System Software terminal to determine which FAS ZIP Codes are active and which conditions of mailing apply.

### FAS Restrictions Table

| FAS Table                      | See Restrictions |
|--------------------------------|------------------|
| 96939                          | A, B             |
| 96940                          | A, B             |
| 96941                          | A, B             |
| 96942                          | A, B             |
| 96943                          | A, B             |
| 96944                          | A, B             |
| 96960                          | A, B             |
| 96970                          | A, B, D          |
| Marshall Islands               | C                |
| Federated States of Micronesia | C                |

### RESTRICTIONS LEGEND

PS Form 2976, *Customs Declaration CN 22 – Sender's Declaration*

PS Form 2976-A, *Customs Declaration and Dispatch Note*

FAS = Freely Associated State

- A.** Bank currency (coin and paper) is prohibited.
- B.** Signature Confirmation, Signature Confirmation Restricted Delivery, Adult Signature Requested, Adult Signature Restricted Delivery, Certified Mail Adult Signature Required, and Certified Mail Adult Signature Restricted Delivery not available.
- C.** Collect on Delivery is prohibited.
- D.** Betel nut (Areca catechu) is prohibited.

— *Asia-Pacific Relations,  
Global Business, 2-23-23*

## Stamp Announcement 23-15: Tulip Blossoms Stamps



©2022 USPS

On April 5, 2023, in Woodburn, OR, the United States Postal Service® will issue the *Tulip Blossoms* stamps (Forever® priced at the First-Class Mail® rate) in 10 designs, in a pressure-sensitive adhesive (PSA) double-sided booklet of 20 stamps (Item 684200), a PSA coil of 3,000 stamps (Item 751500), and a PSA coil of 10,000 stamps (Item 761700). These stamps will go on sale nationwide April 5, 2023, and must not be sold or canceled before the first-day-of-issue.

Ten different stamps in a booklet of 20, as well as coils of 3,000 and 10,000, feature close-up photographs of beautiful tulip blossoms in a rainbow of colors. Each flower fills almost the entire frame of each stamp, with just the top of the stem showing. Art director Greg Breeding designed the stamps with existing photographs by Denise Ippolito.

**Availability to Post Offices: Item 684200, Tulip Blossoms (Forever Priced at the First-Class Mail Rate) Double-sided Booklet of 20 Stamps**

Stamp Fulfillment Services will not make an automatic push distribution to Post Offices. Post Offices may begin ordering stamps before the first-day-of-issue through SFS Web at [sfsweb.usps.gov/sfsweb](https://sfsweb.usps.gov/sfsweb).

**Availability to Post Offices: Item 751500, Tulip Blossoms (Forever Priced at the First-Class Mail Rate) Coil of 3,000 Stamps**

Stamp Fulfillment Services will not make an automatic push distribution to Post Offices. Post Offices may begin ordering stamps before the first-day-of-issue through SFS Web at [sfsweb.usps.gov/sfsweb](https://sfsweb.usps.gov/sfsweb).

**Availability to Post Offices: Item 761700, Tulip Blossoms (Forever Priced at the First-Class Mail Rate) Coil of 10,000 Stamps**

Stamp Fulfillment Services will not make an automatic push distribution to Post Offices. Post Offices may begin ordering stamps before the first-day-of-issue through SFS Web at [sfsweb.usps.gov/sfsweb](https://sfsweb.usps.gov/sfsweb).

**How to Order the First-Day-of-Issue Postmark**

Customers have 120 days to obtain the first-day-of-issue postmark by mail. They may purchase new stamps at their local Post Office™ or at The Postal Store® website at [store.usps.com/store/home](https://store.usps.com/store/home). They must affix the stamps to envelopes of their choice, address the envelopes (to themselves or others), and place them in a larger envelope addressed to:

FDOI – Tulip Blossoms Stamps  
USPS Stamp Fulfillment Services  
8300 NE Underground Drive, Suite 300  
Kansas City, MO 64144-9900

After applying the first-day-of-issue postmark, the Postal Service™ will return the envelopes through the mail. There is no charge for the postmark up to a quantity of 50. There is a 5-cent charge for each additional postmark over 50. All orders must be postmarked by August 5, 2023.

**How to Order First-Day Covers**

The Postal Service also offers first-day covers for new stamp issues and Postal Service stationery items postmarked with the official first-day-of-issue cancellation. Each item has an individual catalog number and is offered

in the *USA Philatelic* catalog and online at [store.usps.com/store/home](https://store.usps.com/store/home). Customers may register to receive a free *USA Philatelic* catalog online at [usps.com/philatelic](https://usps.com/philatelic).

**Locally produced items are not authorized. Only merchandise that has been approved and assigned an item number by Headquarters Retail Marketing may be produced and sold.**

|                               |   |
|-------------------------------|---|
| Issue:                        | <i>Tulip Blossoms</i> Stamps  |
| Item Number:                  | 684200  |
| Denomination & Type of Issue: | First-Class Mail Forever  |
| Format:                       | Double-sided Booklet of 20 (10 designs)   |
| Series:                       | N/A   |
| Issue Date & City:            | April 5, 2023, Woodburn, OR 97071   |
| Designer:                     | Greg Breeding, Charlottesville, VA  |
| Art Director:                 | Greg Breeding, Charlottesville, VA  |
| Existing Photos:              | Denise Ippolito   |
| Modeler:                      | Sandra Lane / Michelle Finn   |
| Manufacturing Process:        | Offset  |
| Printer:                      | Banknote Corporation of America   |
| Press Type:                   | Alprinta 74   |
| Stamps per Booklet:           | 20  |
| Print Quantity:               | 500,000,000 stamps  |
| Paper Type:                   | Phosphor Tagged Paper, Block  |
| Adhesive Type:                | Pressure-sensitive  |
| Colors:                       | Cyan, Magenta, Yellow, Black  |
| Stamp Orientation:            | Vertical  |
| Image Area (w x h):           | 0.77 x 1.05 in / 19.558 x 26.67 mm  |
| Stamp Size (w x h):           | 0.91 x 1.19 in / 23.114 x 30.226 mm   |
| Booklet Size (w x h):         | 5.743 x 2.375 in / 145.872 x 60.325 mm  |
| Plate Size:                   | 800 stamps per revolution   |
| Plate Numbers:                | "B" followed by four (4) single digits  |
| Marginal Markings:            | Header: "Tulip Blossoms" Twenty First-Class Forever Stamps • ©2022 USPS in peel strip area • Barcode • USPS logo • Promotional text • Plate number in peel strip area |

|                               |   |
|-------------------------------|---|
| Issue:                        | <i>Tulip Blossoms</i> Stamps                    |
| Item Number:                  | 751500  |
| Denomination & Type of Issue: | First-Class Mail Forever                        |
| Format:                       | Coil of 3,000 (10 designs)                      |
| Series:                       | N/A   |
| Issue Date & City:            | April 5, 2023, Woodburn, OR 97071               |
| Designer:                     | Greg Breeding, Charlottesville, VA              |
| Art Director:                 | Greg Breeding, Charlottesville, VA              |
| Existing Photos:              | Denise Ippolito                                 |
| Modeler:                      | Sandra Lane / Michelle Finn                     |
| Manufacturing Process:        | Offset  |
| Printer:                      | Banknote Corporation of America                 |
| Press Type:                   | Alprinta 74                                     |
| Stamps per Coil:              | 3,000   |
| Print Quantity:               | 12,000,000 stamps                               |
| Paper Type:                   | Phosphor Tagged Paper, Overall                  |
| Adhesive Type:                | Pressure-sensitive                              |
| Colors:                       | Cyan, Magenta, Yellow, Black                    |
| Stamp Orientation:            | Vertical  |
| Image Area (w x h):           | 0.73 x 0.84 in / 18.542 x 21.336 mm             |
| Stamp Size (w x h):           | 0.87 x 0.98 in / 22.098 x 24.892 mm             |
| Plate Size:                   | 540 stamps per revolution                       |
| Plate Number:                 | "B" followed by four (4) single digits          |
| Coil Number                   | Plate number every 27th stamp below stamp image |
| Frequency:                    |   |

|                               |   |
|-------------------------------|---|
| Issue:                        | <i>Tulip Blossoms</i> Stamps                    |
| Item Number:                  | 761700  |
| Denomination & Type of Issue: | First-Class Mail Forever                        |
| Format:                       | Coil of 10,000 (10 designs)                     |
| Series:                       | N/A   |
| Issue Date & City:            | April 5, 2023, Woodburn, OR 97071               |
| Designer:                     | Greg Breeding, Charlottesville, VA              |
| Art Director:                 | Greg Breeding, Charlottesville, VA              |
| Existing Photos:              | Denise Ippolito                                 |
| Modeler:                      | Sandra Lane / Michelle Finn                     |
| Manufacturing Process:        | Offset  |
| Printer:                      | Banknote Corporation of America                 |
| Press Type:                   | Alprinta 74                                     |
| Stamps per Coil:              | 10,000  |
| Print Quantity:               | 30,000,000 stamps                               |
| Paper Type:                   | Phosphor Tagged Paper, Overall                  |
| Adhesive Type:                | Pressure-sensitive                              |
| Colors:                       | Cyan, Magenta, Yellow, Black                    |
| Stamp Orientation:            | Vertical  |
| Image Area (w x h):           | 0.73 x 0.84 in / 18.542 x 21.336 mm             |
| Stamp Size (w x h):           | 0.87 x 0.98 in / 22.098 x 24.892 mm             |
| Plate Size:                   | 540 stamps per revolution                       |
| Plate Number:                 | "B" followed by four (4) single digits          |
| Coil Number                   | Plate number every 27th stamp below stamp image |
| Frequency:                    |   |

— *Stamp Services, Marketing, 2-23-23*

## Stamp Stock Items Withdrawn from Regular Sale and from Sale at Philatelic Centers

Effective close-of-business March 31, 2023, all Post Offices, stations, branches, postal stores, vending outlets, and authorized philatelic centers must:

- Completely withdraw the stamp stock items listed in the table and their related vending and store-prepared stamp items from sale; and
- Prepare the items for destruction.

Submit items to destruction sites *only* during your return cycle according to local established procedures, under the guidelines in Handbook F-101, *Field Accounting Procedures*, and subchapter 11-6, "Returning Stock to the Stamp Distribution Office or Stamp Distribution Center."

Do not permit sales of the stamp stock items and their related vending and store-prepared stamp items listed in the table at retail counters and outlets after March 31, 2023.

### Stamps Items to Withdraw from Sale

| Item   | Description  |
|--------|--|
| 120100 | (NonMach) <i>California Dogface</i>                        |
| 121500 | \$8.95 <i>Monument Valley Priority Mail</i> ®              |
| 129800 | \$26.95 <i>Palace of Fine Arts Priority Mail Express</i> ® |
| 480100 | (Forever®) <i>Lunar New Year • Year of the Ox</i> Pane/20  |
| 480200 | (Forever) <i>Chien-Shiung Wu</i>                           |
| 480400 | (Forever) <i>Heritage Breeds</i> Pane/20                   |
| 480700 | (Forever) <i>Mystery Message</i>                           |
| 481000 | (Forever) <i>Mid-Atlantic Lighthouses</i> Pane/20          |
| 572400 | (Forever) <i>Made of Hearts</i>                            |
| 683100 | (Forever) <i>Garden Beauty Booklet</i> /20                 |

— Stamp Services,  
Marketing, 2-23-23

## Pictorial Postmarks Announcement

As a community service, the Postal Service™ offers pictorial postmarks to commemorate local events celebrated in communities throughout the nation. A list of events for which pictorial postmarks are authorized appears on the following pages. The sponsor of the pictorial postmark appears in italics under the date. Also provided are illustrations of these postmarks.

People attending these local events may obtain the postmark in person at the temporary Post Office™ station established there. Those who cannot attend the event but who wish to obtain the postmark may submit a mail order request. Pictorial postmarks are available only for the dates indicated, and *requests must be postmarked no later than 30 days following the requested pictorial postmark date.*

All requests must include a stamped envelope or postcard bearing at least the minimum First-Class Mail® postage. Items submitted for postmark may not include

postage issued after the date of the requested postmark. Such items will be returned unserved.

Customers wishing to obtain a postmark must affix stamps to any envelope or postcard of their choice, address the envelope or postcard to themselves or others, insert a card of postcard thickness in envelopes for sturdiness, and tuck in the flap. Place the envelope or postcard in a larger envelope and address it to: Pictorial Postmarks, followed by the Name of the Station, Address, City, State, ZIP+4® Code, as listed next to the postmark.

Customers can also send stamped envelopes and postcards without addresses for postmark, as long as they supply a larger envelope with adequate postage and their return address. After applying the pictorial postmark, the Postal Service returns the items (with or without addresses) under addressed protective cover.

The following pictorial postmarks have been extended for 30 days:



February 14, 2023

*Auglaize County Historical Society*  
Cridersville Station, OH 45806  
Postmaster  
111 East Main Street  
Cridersville, OH 45806-9998



February 14, 2023

*Auglaize County Historical Society*  
Minster Station, OH 45865  
Postmaster  
62 East 4th Street  
Minster, OH 45865-9998



February 14, 2023

*Auglaize County Historical Society*  
New Bremen Station, OH 45869  
Postmaster  
111 North Main Street  
New Bremen, OH 45869-9998



February 14, 2023

*Auglaize County Historical Society*  
New Knoxville Station, OH 45871  
Postmaster  
105 South Main Street  
New Knoxville, OH 45871-9998



February 14, 2023 — St. Johns STA, Ohio 45884

February 14, 2023

*Auglaize County Historical Society*  
 St. Johns Station, OH 45884  
 Postmaster  
 19210 Center Street  
 Saint Johns, OH 45884-9998



February 14, 2023 — St. Marys STA, Ohio 45885

February 14, 2023

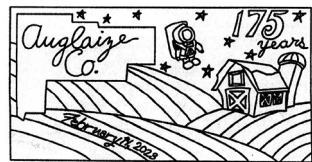
*Auglaize County Historical Society*  
 St Marys Station, OH 45885  
 Postmaster  
 120 North Chestnut Street  
 Saint Marys, OH 45885-9998



February 14, 2023 — Uniopolis STA, Ohio 45888

February 14, 2023

*Auglaize County Historical Society*  
 Uniopolis Station, OH 45888  
 Postmaster  
 7 Main Street  
 Uniopolis, OH 45888-9998



February 14, 2023—Wapakoneta STA, Ohio 45895

February 14, 2023

*Auglaize County Historical Society*  
 Wapakoneta Station, OH 45895  
 Postmaster  
 12 Willipie Street  
 Wapakoneta, OH 45895-9998



February 14, 2023 — Waynesfield STA, Ohio 45896

February 14, 2023

*Auglaize County Historical Society*  
 Waynesfield Station, OH 45896  
 Postmaster  
 109 North Westminster Street  
 Waynesfield, OH 45896-9998



February 14, 2023

*Friends of Hartville*  
 Valentine Station  
 Postmaster  
 PO Box 9998  
 Hartville, WY 82215-9998



February 24, 2023  
*Anchorage Philatelic Society*  
 APEX Station  
 Postmaster  
 3720 Barrow Street  
 Anchorage, AK 99599-9996



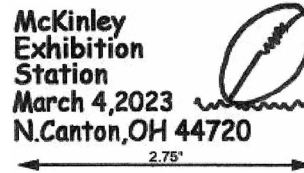
happy st. patrick's  
 day station

MAR 1, 2023  
 st. patrick, mo  
 63466

March 1–31, 2023  
*Shrine of St. Patrick*  
 Happy St. Patrick's Day  
 Station  
 Postmaster  
 2 Erin Circle  
 St Patrick, MO 63466-9998



February 24, 2023  
*Tropa XXV*  
 La Legendaria Station  
 Customer Relations  
 Specialist  
 585 Avenue Franklin D.  
 Roosevelt, Suite 223  
 San Juan, PR 00936-9998



March 4, 2023  
*McKinley Stamp Club*  
 McKinley Exhibition Station  
 Postmaster  
 4735 Massillon Road  
 Green, OH 44232-9998



February 24–25, 2023  
*Stamp Collectors Club of Toledo*  
 Toledo Stamp Expo Station  
 Postmaster  
 6923 Angola Road  
 Holland, OH 43528-9998



March 4, 2023  
*Anchorage Philatelic Society*  
 Big Race Station  
 Postmaster  
 3720 Barrow Street  
 Anchorage, AK 99599-9998



February 25, 2023  
*Lincoln Stamp Club*  
 LINPEX Station  
 Postmaster  
 PO Box 9998  
 Lincoln, NE 68501-9998



March 4, 2023  
*Knoxville Philatelic Society*  
 KnoxPEX Station  
 Postmaster  
 1237 East Weisgarbar  
 Knoxville, TN 37950-9998



February 25–26, 2023  
*United States Postal Service*  
 San Diego Stamp Show  
 Station  
 Postmaster  
 11251 Rancho Carmel Drive  
 San Diego, CA 92199-9998



March 5, 2023  
*McKinley Stamp Club*  
 McKinley Exhibition Station  
 Postmaster  
 4735 Massillon Road  
 Green, OH 44232-9998

— Stamp Services,  
 Marketing, 2-23-23

### How to Order the First-Day-of-Issue Digital Color or Traditional Postmarks

Customers have 120 days to obtain the first-day-of-issue postmarks by mail. Each cover must have sufficient postage to meet First-Class Mail® requirements. Customers may purchase new stamps at their local Post Office™, by phone at 844-737-7826, or on The Postal Store® website at [usps.com/shop](https://usps.com/shop).

#### Digital Color Postmarks

Only select stamp issues offer a digital color postmark. Customers may submit #6 or #10 envelopes constructed of paper rated as "laser safe." The Postal Service™ recommends envelopes of 80-pound Accent Opaque, acid-free, 9/16-inch side seams with no glue on the flap. The maximum size of all digital color postmarks is 2 inches (vertically) by 4 inches (horizontally). Allow sufficient space on the envelope to accommodate the postmark. Do not use self-adhesive labels for addresses on the envelope. Two test envelopes must be included. There is a minimum of 10 envelopes at 50 cents per postmark required at the time of servicing. Customers must submit a check, money order, or credit card for payment.

The Postal Service reserves the right to not accept hand-painted and other cachet envelopes that are not compatible with our digital color postmark equipment. The Postal Service also reserves the right to substitute traditional black rubber postmarks if use of nonspecified envelopes results in poor image quality or damage to equipment.

Customers must affix the stamps to the envelopes and address them to themselves or others for return through the mail. Or, they may include an additional self-addressed return envelope, large enough to accommodate their canceled items, with sufficient postage affixed for return of

their postmarked items. Address customer requests for digital color postmarks to:

FDOI – (Name of Stamp Issue)  
USPS Stamp Fulfillment Services  
8300 NE Underground Drive, Suite 300  
Kansas City, MO 64144-9900

After applying the first-day-of-issue postmark, the Postal Service will return the envelopes to the customer by U.S. Mail®.

#### Traditional Postmarks

Customers must affix the stamps to the envelopes and address them to themselves or others for return through the mail. Or, they may include an additional self-addressed return envelope, large enough to accommodate their canceled items, with sufficient postage affixed for return of their postmarked items. Address customer requests for traditional postmarks to:

FDOI – (Name of Stamp Issue)  
USPS Stamp Fulfillment Services  
8300 NE Underground Drive, Suite 300  
Kansas City, MO 64144-9900

After applying the first-day-of-issue postmark, the Postal Service will return the envelopes to the customer by U.S. Mail. There is no charge for the first 50 postmarks. There is a 5-cent charge for each additional postmark over 50. Customers must submit a check, money order, or credit card for payment.

Locally produced items are not authorized. Only merchandise that has been approved and assigned an item number by Headquarters Retail Marketing may be produced and sold.



\_\_\_\_\_  
FIRST DAY OF ISSUE  
\_\_\_\_\_

#### FDOI – Red Fox Stamp

USPS Stamp Fulfillment Services  
8300 NE Underground Drive, Suite 300  
Kansas City, MO 64144-9900

May 5, 2023

#### Black and White Pictorial



\_\_\_\_\_  
FIRST DAY OF ISSUE  
\_\_\_\_\_

#### FDOI – School Bus Stamp

USPS Stamp Fulfillment Services  
8300 NE Underground Drive, Suite 300  
Kansas City, MO 64144-9900

May 5, 2023

#### Black and White Pictorial



**FDI – Lunar New Year: Year of the Rabbit Stamp**

USPS Stamp Fulfillment Services  
8300 NE Underground Drive, Suite 300  
Kansas City, MO 64144-9900

May 12, 2023

**Digital Color Pictorial**



**FDI – Lunar New Year: Year of the Rabbit Stamp**

USPS Stamp Fulfillment Services  
8300 NE Underground Drive, Suite 300  
Kansas City, MO 64144-9900

May 12, 2023

**Black and White Pictorial**



**FDI – Love 2023 Stamps**

USPS Stamp Fulfillment Services  
8300 NE Underground Drive, Suite 300  
Kansas City, MO 64144-9900

May 19, 2023

**Digital Color Pictorial**



**FDI – Love 2023 Stamps**

USPS Stamp Fulfillment Services  
8300 NE Underground Drive, Suite 300  
Kansas City, MO 64144-9900

May 19, 2023

**Black and White Pictorial**

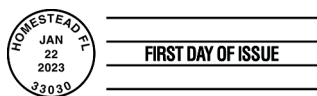


**FDI – Florida Everglades Stamp**

USPS Stamp Fulfillment Services  
8300 NE Underground Drive, Suite 300  
Kansas City, MO 64144-9900

May 22, 2023

**Digital Color Pictorial**



**FDI – Florida Everglades Stamp**

USPS Stamp Fulfillment Services  
8300 NE Underground Drive, Suite 300  
Kansas City, MO 64144-9900

May 22, 2023

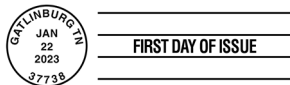
**Black and White Pictorial**



**FDI – Great Smoky Mountains Stamp**

USPS Stamp Fulfillment Services  
8300 NE Underground Drive, Suite 300  
Kansas City, MO 64144-9900  
May 22, 2023

Digital Color Pictorial



**FDI – Great Smoky Mountains Stamp**

USPS Stamp Fulfillment Services  
8300 NE Underground Drive, Suite 300  
Kansas City, MO 64144-9900  
May 22, 2023

Black and White Pictorial



**FDI – Ernest J. Gaines Stamp**

USPS Stamp Fulfillment Services  
8300 NE Underground Drive, Suite 300  
Kansas City, MO 64144-9900  
May 23, 2023

Digital Color Pictorial



**FDI – Ernest J. Gaines Stamp**

USPS Stamp Fulfillment Services  
8300 NE Underground Drive, Suite 300  
Kansas City, MO 64144-9900  
May 23, 2023

Black and White Pictorial



**FDI – Women's Soccer Stamp**

USPS Stamp Fulfillment Services  
8300 NE Underground Drive, Suite 300  
Kansas City, MO 64144-9900  
June 16, 2023

Digital Color Pictorial



**FDI – Women's Soccer Stamp**

USPS Stamp Fulfillment Services  
8300 NE Underground Drive, Suite 300  
Kansas City, MO 64144-9900  
June 16, 2023

Black and White Pictorial

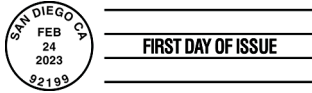


**Digital Color Pictorial**

**FDOI – Floral Geometry Stamp**

USPS Stamp Fulfillment Services  
8300 NE Underground Drive, Suite 300  
Kansas City, MO 64144-9900

June 24, 2023



**Black and White Pictorial**

**FDOI – Floral Geometry Stamp**

USPS Stamp Fulfillment Services  
8300 NE Underground Drive, Suite 300  
Kansas City, MO 64144-9900

June 24, 2023



**Black and White Pictorial**

**FDOI – Patriotic Block Stamp**

USPS Stamp Fulfillment Services  
8300 NE Underground Drive, Suite 300  
Kansas City, MO 64144-9900

July 1, 2023



**Digital Color Pictorial**

**FDOI – Toni Morrison Stamp**

USPS Stamp Fulfillment Services  
8300 NE Underground Drive, Suite 300  
Kansas City, MO 64144-9900

July 7, 2023



**Black and White Pictorial**

**FDOI – Toni Morrison Stamp**

USPS Stamp Fulfillment Services  
8300 NE Underground Drive, Suite 300  
Kansas City, MO 64144-9900

July 7, 2023



**Digital Color Pictorial**

**FDOI – Railroad Stations Stamps**

USPS Stamp Fulfillment Services  
8300 NE Underground Drive, Suite 300  
Kansas City, MO 64144-9900

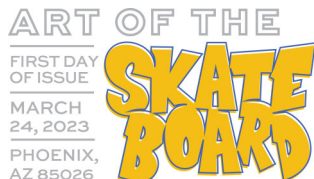
July 9, 2023



**FDOI – Railroad Stations Stamps**  
USPS Stamp Fulfillment Services  
8300 NE Underground Drive, Suite 300  
Kansas City, MO 64144-9900

July 9, 2023

**Black and White Pictorial**



**FDOI – Art of the Skateboard Stamps**  
USPS Stamp Fulfillment Services  
8300 NE Underground Drive, Suite 300  
Kansas City, MO 64144-9900

July 24, 2023

**Digital Color Pictorial**



**FDOI – Art of the Skateboard Stamps**  
USPS Stamp Fulfillment Services  
8300 NE Underground Drive, Suite 300  
Kansas City, MO 64144-9900

July 24, 2023

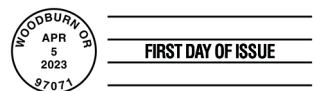
**Black and White Pictorial**



**FDOI – Tulip Blossoms Stamps**  
USPS Stamp Fulfillment Services  
8300 NE Underground Drive, Suite 300  
Kansas City, MO 64144-9900

August 5, 2023

**Digital Color Pictorial**



**FDOI – Tulip Blossoms Stamps**  
USPS Stamp Fulfillment Services  
8300 NE Underground Drive, Suite 300  
Kansas City, MO 64144-9900

August 5, 2023

**Black and White Pictorial**

Add Joy to Your Mailings with  
**Love 2023**  
**Forever<sup>®</sup> Stamps**



ON SALE NATIONWIDE: **JANUARY 19, 2023**

