



## Beware of Text Message Scams

See page 3

# Contents

## COVER STORY

Beware of Text Message Scams . . . . . 3

## POLICIES, PROCEDURES, AND FORMS UPDATES

### Manuals

DMM Revision: Using Return Addresses. . . . . 4

IMM Revision: Individual Country Listing for Egypt. . . . . 4

IMM Revision: Individual Country Listing for Japan . . . . . 5

### Publications

Publication 431 Revision: Changes to Post Office Box Service and Caller Service Fee Groups . . . . . 6

## ORGANIZATION INFORMATION

### Environmental Management

Waste Management for Universal Waste Lamps. . . . . 7

### Information Security

Managers Must Review Access to USPS Systems. . . . . 8

Think Before You Post on Social Media . . . . . 8

### Stamp Services

Stamp Announcement 23-16: U.S. Flag Stamp . . . . . 9

Update: Stamp Announcement 23-2: School Bus Stamp . . . . . 32

Pictorial Postmarks Announcement . . . . . 32

How to Order the First-Day-of-Issue Digital Color or Traditional Postmarks . . . . . 34

### Supply Management

USPS Headquarters Managers and Field Installation Heads: March 2023 Annual Capital Property Review. . . . . 39

## PULL-OUT INFORMATION

Elimination of Corporate Accounts . . . . . 11

### Fraud

Invalid USPS Corporate Account Numbers. . . . . 12

Missing, Lost, or Stolen U.S. Money Order Forms . . . . . 13

Missing, Lost, or Stolen Canadian Money Order Forms . . . . . 19

Verifying U.S. Postal Service Money Orders . . . . . 21

Counterfeit Canadian Money Order Forms . . . . . 21

Toll-Free Number Available to Verify Canadian Money Orders . . . . . 21

### Other Information

Overseas Military/Diplomatic Mail . . . . . 22

Freely Associated States Restrictions. . . . . 30

## POSTAL BULLETIN 2022 ANNUAL INDEX

2022 Annual Index . . . . . PB 22616 (1-26-23)

Find the latest in mail and delivery information and services offered by U.S. Postal® in the *Postal Bulletin* at [about.usps.com/postal-bulletin](https://about.usps.com/postal-bulletin)

**Mail Moment®**

# Cover Story

## Beware of Text Message Scams

Phishing is the fraudulent practice of sending emails or other messages claiming to be from trustworthy companies. These messages encourage individuals to disclose personal information, such as passwords and credit card numbers.

Many people don't realize that cybercriminals can also deliver phishing attacks through text messages, which is known as smishing. These types of scams often mimic a government agency, bank, or delivery company to appear legitimate.

Some of the common indicators of a smishing scheme include messaging that creates a sense of urgency with phrases like:

- "Your account has been suspended."
- "There is suspicious activity on your account."
- "There is an error with your shipping address."
- "There is a package waiting for you at the post office."

USPS® does not send unsolicited text messages. If you receive a message from USPS about a package that you did not send, *do not click on the message* as it is likely a smishing scam.

Keep your information secure with these tips:

- **Do not click.** Do not open any link or attachment from a sender you cannot verify.
- **Report the message to your service provider.** Copy the message and forward it to 7726 (SPAM). This will help your wireless provider identify and block similar messages in the future.

Additionally, USPS offers a free service called Informed Delivery®, which is available to anyone with a residential address or PO Box™ in an eligible ZIP Code™. With Informed Delivery, users can get preview images of incoming mail, as well as status updates for incoming and outbound packages. Find out if you are eligible for this service at [usps.com/manage/informed-delivery.htm](https://usps.com/manage/informed-delivery.htm).

For more information about smishing scams:

- Visit the CyberSafe at USPS® pages on *Blue* ([blue.usps.gov/cyber](https://blue.usps.gov/cyber)) and *LiteBlue* ([lite-blue.usps.gov/cyber](https://lite-blue.usps.gov/cyber)).
- Visit the Monthly Awareness Campaigns page at [blue.usps.gov/cyber/communications.htm](https://blue.usps.gov/cyber/communications.htm).

— Corporate Information Security Office,  
Chief Information Security Officer, 3-9-23

# Policies, Procedures, and Forms Updates

## Manuals

### DMM Revision: Using Return Addresses

Effective July 9, 2023, the Postal Service™ will revise *Mailing Standards of the United States Postal Service, Domestic Mail Manual (DMM®)*, section 602.1.5.4, to clarify standards for using a return address on domestic mailpieces.

DMM 602.1.5.4 specifies that when U.S. postage is applied to a domestic mailpiece, only a domestic return address is authorized. This section also currently provides an exception that allows a domestic mailpiece to have a foreign return address in certain circumstances as a courtesy.

This exceptional treatment is no longer consistent with changes in international requirements that have evolved in recent years. Moreover, the Postal Service incurs destination-country delivery charges for items returned abroad with a foreign return address, and it does not receive corresponding international postage revenue to cover such costs. The original intent to provide an exception that allowed a foreign return address on a domestic mailpiece is, thus, no longer feasible. Therefore, the Postal Service is accordingly revising section 602.1.5.4 to remove the exception that allowed a domestic mailpiece to bear a foreign return address. After this change takes effect, a domestic mailpiece will be required to bear only a domestic return address.

Although the Postal Service will not publish this revision in the DMM until July 9, 2023, the standards are effective April 1, 2023.

### ***Mailing Standards of the United States Postal Service, Domestic Mail Manual (DMM)***

\* \* \* \* \*

#### **600 Basic Standards for All Mailing Services**

\* \* \* \* \*

#### **602 Addressing**

##### **1.0 Elements of Addressing**

\* \* \* \* \*

##### **1.5 Return Addresses**

\* \* \* \* \*

*[Revise the title and text of 1.5.4 to read as follows:]*

##### **1.5.4 Using Return Addresses**

Regardless of destination, when U.S. postage is applied to a domestic mailpiece, as defined under 608.2.1 and 608.2.2, only a domestic return address is authorized.

\* \* \* \* \*

The Postal Service will incorporate this revision into the July 9, 2023, edition of the online DMM, which is available via Postal Explorer® at [pe.usps.com](https://pe.usps.com).

— Product Classification,  
Product Solutions, 3-9-23

### IMM Revision: Individual Country Listing for Egypt

Effective March 9, 2023, the Postal Service™ is revising the Individual Country Listing for Egypt in *Mailing Standards of the United States Postal Service, International Mail Manual (IMM®)* to reflect an additional restriction.

This revision is based on a formal request that Egypt Post (the designated postal operator of Egypt) made through the Universal Postal Union via *International Bureau Circular* 179, dated November 7, 2022, and through subsequent information received by email on January 15, 2023.

### ***Mailing Standards of the United States Postal Service, International Mail Manual (IMM)***

\* \* \* \* \*

#### **Individual Country Listings**

\* \* \* \* \*

#### **Egypt**

##### **Country Conditions for Mailing**

\* \* \* \* \*

**Restrictions**

[Add a new first entry to read as follows:]

Electronic payment cards mailed to Egypt have the following restrictions, in accordance with national legislation, Egyptian Customs Authorities, and Egypt Post (the designated postal operator of Egypt):

- An electronic payment card (card) must bear the name of the recipient.
- The sender of a card must use a USPS service that requires the recipient to sign a receipt at the time of delivery.
- Egypt Post must deliver a card to the recipient named on the mail item or to a person authorized by virtue of

a proxy that clearly states that the authorized person is entitled to receive the card on behalf of the recipient.

- The recipient must provide proof of identity (i.e., a National ID or passport).
- The recipient or authorized proxy must sign a receipt at the time of delivery.

\* \* \* \* \*

Although effective March 9, 2023, the Postal Service will incorporate this revision into a later edition of the online IMM, which is available via Postal Explorer® at [pe.usps.com](https://pe.usps.com).

— Product Classification, Product Solutions, 3-9-23

**IMM Revision: Individual Country Listing for Japan**

Effective March 9, 2023, the Postal Service™ is revising the Individual Country Listing for Japan in *Mailing Standards of the United States Postal Service*, International Mail Manual (IMM®) to note an additional observation regarding labels on mail destined to Japan.

This revision is based on a formal request that Japan Post (the designated postal operator of Japan) made through the Universal Postal Union via *International Bureau Circular* 112, dated July 4, 2022, and through subsequent information received by email on November 24, 2022.

**Mailing Standards of the United States Postal Service, International Mail Manual (IMM)**

\* \* \* \* \*

**Individual Country Listings**

\* \* \* \* \*

**Japan**

**Country Conditions for Mailing**

\* \* \* \* \*

**Observations**

\* \* \* \* \*

[Add a fourth entry to read as follows:]

4. To improve the readability of postal labels in order to enhance customs clearance and the processing and delivery of mail destined to Japan, Japan Post requests that the mailer use labels made from non-thermal paper and recommends a font size of 10 points for the destination and sender’s addresses.

\* \* \* \* \*

Although effective March 9, 2023, the Postal Service will incorporate this revision into a later edition of the online IMM, which is available via Postal Explorer® at [pe.usps.com](https://pe.usps.com).

— Product Classification, Product Solutions, 3-9-23

## Publications

### Publication 431 Revision: Changes to Post Office Box Service and Caller Service Fee Groups

Effective March 9, 2023, Publication 431, *Post Office Box Service and Caller Service Fee Groups*, is revised to include the following changes.

#### **Publication 431, *Post Office Box Service and Caller Service Fee Groups***

\* \* \* \* \*

[Delete the following entries:]

ZIP Code	Fee Group
48870	7
62083	5
88323	5

\* \* \* \* \*

The online version of Publication 431 is dated July 2013. Publication 431 is currently available on the Postal Service™ PolicyNet website ([blue.usps.gov/cpim](https://blue.usps.gov/cpim)):

- Go to [blue.usps.gov](https://blue.usps.gov).
- In the left-hand column, click *Essential Links*, and then click *PolicyNet*.
- Go to the right-hand side under “Published Forms and Directives.”
- Click *Publications*.

Offices with WebBATS Manager/Supervisor access can view current Publication 431 information by going to the WebBATS Edit Facility Information page, as follows:

1. Go to the WebBATS main menu, and select Utility> Facility>Edit Facility option.
2. View the Fee Group field on the Edit Facility Information page.

— *Post Office Operations,  
Retail and Post Office Operations, 3-9-23*



# Organization Information

## Environmental Management

### Waste Management for Universal Waste Lamps

Waste lamps include inoperable or broken electric lamps (or light bulbs). Waste lamps are a potential safety and environmental concern because they may contain mercury or other toxic heavy metals. For this reason, several types of waste lamps are regulated as universal waste and require special management and disposal. Common types of lamps used by USPS® that must be managed as universal waste include:

- **Fluorescent Lamps.** This category includes 4-foot and 8-foot linear, U-shaped, circular, and compact fluorescent lamp bulbs. Also included are “green-tipped” or “low-mercury” lamps, which must be managed the same as other fluorescent lamps.
- **Neon Lamps.** Often used in brightly colored signs, neon lights that emit colors other than red use gases that may contain mercury.
- **High-Intensity Discharge (HID) Lamps.** HID lamps are often associated with large interior spaces with high ceilings, such as warehouses, and exterior lighting, such as peripheral security lighting, streetlights, and fuel island lighting. They may also be found in newer motor vehicle headlights, as well as LCD or DLP projection television sets or projection displays.
- **LED Lamps.** LED lamps may contain federally regulated metals like lead, chromium, or selenium. LED lamps are now available in 4-foot and 8-foot linear tube sizes. Multiple LED bulbs are typically contained in an LED lamp.
- **Ultraviolet (UV) Lamps.** UV lamps emit high intensity UV light. Small UV lamps may be present in USPS mail sorting automation platforms, such as the Advanced Facer Canceler System. UV bulbs may also be used in disinfection and germicidal lighting systems.

Incandescent and halogen bulbs — which typically do not contain mercury or toxic metals and are non-hazardous — can be disposed of in the trash or dumpster.

### Waste Lamp Management Requirements

USPS sites must store universal waste lamps in clearly labeled, closed containers and properly train employees to manage these wastes and maintain recycling records. Additionally, sites must arrange for universal waste lamp pick-up (or mailback) and subsequent off-site recycling within 1 year (365 days) of the original waste generation date. Per USPS policy, facilities that generate universal waste must also perform a monthly inspection of their universal waste storage accumulation area.

**Important Safety Reminder:** Do not send waste bulbs or lamps through the mail to the Atlanta Mail Recovery Center, Tampa/Ybor City Logistics and Distribution Center, or the Topeka Material Distribution Center.

### Recycling Options

USPS has contracts for universal waste management with Cleanlites Recycling, Inc. Recycling services are available in eBuy+ by searching under catalog name USA Lamp and Ballast Recycling, Inc. Services include both mailback recycling containers and on-site waste pick-up.

For more information about recycling waste lamps:

- Review the *Environmental Compliance Bulletin for Waste Lamp Management* at [blue.usps.gov/sustainability/environmental/\\_pdf/waste/ecb-waste-lamps.pdf](https://blue.usps.gov/sustainability/environmental/_pdf/waste/ecb-waste-lamps.pdf).
- Visit the Waste Light Bulbs and Lamps page at [blue.usps.gov/sustainability/bulb-recycling.htm](https://blue.usps.gov/sustainability/bulb-recycling.htm).
- Consult your designated environmental contact at [blue.usps.gov/sustainability/contact.htm](https://blue.usps.gov/sustainability/contact.htm).

— Environmental Affairs and Corporate Sustainability,  
Corporate Affairs, 3-9-23

## Information Security

### Managers Must Review Access to USPS Systems

Managers must review employee and contractor access to USPS® applications and systems before March 29, 11:59 P.M. Central Time.

The periodic reviews are required under the Sarbanes-Oxley Act. Information about this law can be found at [blue.usps.gov/sox/sox-overview.htm](http://blue.usps.gov/sox/sox-overview.htm).

To review employee and contractor access, managers must:

- Verify users are properly assigned to them and that their occupation or position titles are correct. This data must be consistent with employees' PS Form 50, *Notification of Personnel Action*.

- Ensure users' access to systems and applications are restricted to only what is required to perform their current job duties.

Managers must perform the reviews using both eAccess ([eaccess.usps.gov/ords/eaccessnp/sso\\_std.sso\\_welcome](http://eaccess.usps.gov/ords/eaccessnp/sso_std.sso_welcome)) and ARIS ([aris.usps.gov/identityiq/login.jsf?prompt=true](http://aris.usps.gov/identityiq/login.jsf?prompt=true)).

For instructions on performing both kinds of reviews, visit [usps.servicenowservices.com/sp?id=index](http://usps.servicenowservices.com/sp?id=index).

— Corporate Information Security Office  
Chief Information Security Officer, 3-9-23

### Think Before You Post on Social Media

Posting photos on social media while you are away from home can leave you vulnerable to malicious acts.

Cybercriminals can use these photos and any other data you post online to get information about your personal and professional life and use it for a fraudulent purpose. This collection of data is a form of social engineering called pretexting, in which cybercriminals make up scenarios to manipulate victims into sharing information.

Social engineering encompasses a wide range of malicious activities that use manipulation to trick users into giving away private information and includes pretexting, phishing, vishing, or smishing.

Employees and contractors should be aware that social engineering attacks are not limited to personal devices. USPS-issued devices, such as laptops, cell phones, and

tablets are susceptible to these kinds of attacks, which could damage the USPS® network and its operations.

Here are some tips to help avoid a social engineering attack:

- Limit shared information, especially about your family, job, or other personal details.
- Verify that senders are who they claim to be and don't send information if you have any doubts.
- If you suspect you are being targeted on your USPS-issued device, report the threat to the Cybersecurity Operations Center by calling 866-877-7247 or sending an email to [CyberSafe@usps.gov](mailto:CyberSafe@usps.gov).

For more information, visit [blue.usps.gov/cyber](http://blue.usps.gov/cyber) or [lite-blue.usps.gov/cyber](http://lite-blue.usps.gov/cyber).

— Corporate Information Security Office  
Chief Information Security Officer, 3-9-23



## Stamp Services

### Stamp Announcement 23-16: U.S. Flag Stamp



©2022 USPS

On April 10, 2023, in Freedom, ME, the United States Postal Service® will issue the *U.S. Flag* stamp (Forever® priced at the First-Class Mail® rate) in one design, in the following formats:

- A pressure-sensitive adhesive (PSA) pane of 20 stamps (Item 122700).
- A PSA double-sided booklet of 20 stamps (Item 684300).
- A PSA coil of 100 stamps (Item 740700).
- A PSA coil of 3,000 stamps (Item 751300).
- A PSA coil of 10,000 stamps (Item 761400).

This stamp will go on sale nationwide April 10, 2023, and must not be sold or canceled before the first-day-of-issue.

With the issuance of the 2023 *U.S. Flag* stamp, the Postal Service™ continues its long tradition of honoring the American flag. The stamp art bears a straightforward graphic design of the red, white, and blue. Providing a solid foundation for the flag are the words “FREEDOM” in gray and, below it, “FOREVER / USA.” Art director Antonio Alcalá designed the stamp with existing art by Hong Li.

#### **Availability to Post Offices: Item 122700, U.S. Flag (Forever Priced at the First-Class Mail Rate), Pane of 20 Stamps**

Stamp Fulfillment Services will not make an automatic push distribution to Post Offices. Post Offices may begin ordering stamps before the first-day-of-issue through SFS Web at [sfsweb.usps.gov/sfsweb](https://sfsweb.usps.gov/sfsweb).

#### **Availability to Post Offices: Item 684300, U.S. Flag (Forever Priced at the First-Class Mail Rate), Double-sided Booklet of 20 Stamps**

Stamp Fulfillment Services will not make an automatic push distribution to Post Offices. Post Offices may begin ordering stamps before the first-day-of-issue through SFS Web at [sfsweb.usps.gov/sfsweb](https://sfsweb.usps.gov/sfsweb).

#### **Availability to Post Offices: Item 740700, U.S. Flag (Forever Priced at the First-Class Mail Rate), Coil of 100 Stamps**

Stamp Fulfillment Services will not make an automatic push distribution to Post Offices. Post Offices may begin ordering stamps before the first-day-of-issue through SFS Web at [sfsweb.usps.gov/sfsweb](https://sfsweb.usps.gov/sfsweb).

#### **Availability to Post Offices: Item 751300, U.S. Flag (Forever Priced at the First-Class Mail Rate), Coil of 3,000 Stamps**

Stamp Fulfillment Services will not make an automatic push distribution to Post Offices. Post Offices may begin ordering stamps before the first-day-of-issue through SFS Web at [sfsweb.usps.gov/sfsweb](https://sfsweb.usps.gov/sfsweb).

#### **Availability to Post Offices: Item 761400, U.S. Flag (Forever Priced at the First-Class Mail Rate), Coil of 10,000 Stamps**

Stamp Fulfillment Services will not make an automatic push distribution to Post Offices. Post Offices may begin ordering stamps before the first-day-of-issue through SFS Web at [sfsweb.usps.gov/sfsweb](https://sfsweb.usps.gov/sfsweb).

#### **How to Order the First-Day-of-Issue Postmark**

Customers have 120 days to obtain the first-day-of-issue postmark by mail. They may purchase new stamps at their local Post Office™ or at The Postal Store® website at [store.usps.com/store/home](https://store.usps.com/store/home). They must affix the stamps to envelopes of their choice, address the envelopes (to themselves or others), and place them in a larger envelope addressed to:

FDOI – U.S. Flag Stamp  
USPS Stamp Fulfillment Services  
8300 NE Underground Drive, Suite 300  
Kansas City, MO 64144-9900

After applying the first-day-of-issue postmark, the Postal Service will return the envelopes through the mail. There is no charge for the postmark up to a quantity of 50. There is a 5-cent charge for each additional postmark over 50. All orders must be postmarked by August 10, 2023.

### How to Order First-Day Covers

The Postal Service also offers first-day covers for new stamp issues and Postal Service stationery items postmarked with the official first-day-of-issue cancellation. Each item has an individual catalog number and is offered in the *USA Philatelic* catalog and online at [store.usps.com/store/home](https://store.usps.com/store/home). Customers may register to receive a free *USA Philatelic* catalog online at [usps.com/philatelic](https://usps.com/philatelic).

**Locally produced items are not authorized. Only merchandise that has been approved and assigned an item number by Headquarters Retail Marketing may be produced and sold.**

Issue:	<i>U.S. Flag</i> Stamp
Item Number:	122700
Denomination & Type of Issue:	First-Class Mail Forever
Format:	Pane of 20 (1 design)
Series:	N/A
Issue Date & City:	April 10, 2023, Freedom, ME 04941
Art Director:	Antonio Alcalá, Alexandria, VA
Designer:	Antonio Alcalá, Alexandria, VA
Existing Art:	Hong Li
Modeler:	Sandra Lane / Michelle Finn
Manufacturing Process:	Offset, Microprint
Printer:	Banknote Corporation of America
Press Type:	Alprinta 74
Stamps per Pane:	20
Print Quantity:	100,000,000
Paper Type:	Phosphor Tagged, Block
Adhesive Type:	Pressure-sensitive
Processed at:	Banknote Corporation of America
Stamp Orientation:	Vertical
Image Area (w x h):	0.73 x 0.84 in / 18.542 x 21.336 mm
Stamp Size (w x h):	0.87 x 0.98 in / 22.098 x 24.892 mm
Pane Size (w x h):	5.30 x 4.88 in / 134.62 x 123.952 mm
Colors:	Pantone 3546C, Pantone Cool Gray 5C, Pantone 7687C
Plate Size:	320 stamps per revolution
Plate Number:	"B" followed by three (3) single digits
Marginal Markings:	
Front:	Plate number in four corners
Back:	©2022 USPS • USPS logo • 2 barcodes (122700) • Plate position diagram (8) • Promotional text

Issue:	<i>U.S. Flag</i> Stamp
Item Number:	684300
Denomination & Type of Issue:	First-Class Mail Forever
Format:	Double-sided Booklet of 20 (1 design)
Series:	N/A
Issue Date & City:	April 10, 2023, Freedom, ME 04941
Art Director:	Antonio Alcalá, Alexandria, VA
Designer:	Antonio Alcalá, Alexandria, VA
Illustrator:	Hong Li
Modeler:	Joseph Sheeran
Manufacturing Process:	Offset, Microprint
Printer:	Ashton Potter (USA) Ltd. (APU)
Press Type:	Muller A76
Stamps per Booklet:	20
Print Quantity:	900,000,000 stamps
Paper Type:	Nonphosphored Type III, Block Tagged
Adhesive Type:	Pressure-sensitive
Processed at:	Ashton Potter (USA) Ltd. (APU)
Stamp Orientation:	Vertical
Image Area (w x h):	0.73 x 0.84 in / 18.542 x 21.336 mm
Stamp Size (w x h):	0.87 x 0.98 in / 22.098 x 24.892 mm
Full Booklet Size (w x h):	5.52 x 1.96 in / 140.208 x 49.784 mm
Colors:	Pantone 7687C, Pantone 3546C, Pantone Cool Gray 5C
Plate Size:	1040 stamps per revolution
Plate Number:	"P" followed by three (3) single digits
Marginal Markings:	Header: "U.S. FLAG", 20 First-Class Forever Stamps • ©2022 USPS in peel strip area • Barcode • USPS logo • Promotional text • Plate number in peel strip area

Issue:	<i>U.S. Flag</i> Stamp
Item Number:	684300
Denomination & Type of Issue:	First-Class Mail Forever
Format:	Double-sided Booklet of 20 (1 design)
Series:	N/A
Issue Date & City:	April 10, 2023, Freedom, ME 04941
Art Director:	Antonio Alcalá, Alexandria, VA
Designer:	Antonio Alcalá, Alexandria, VA
Illustrator:	Hong Li
Modeler:	Sandra Lane / Michelle Finn
Manufacturing Process:	Offset, Microprint
Printer:	Banknote Corporation of America
Press Type:	Alprinta 74
Stamps per Booklet:	20
Print Quantity:	900,000,000 stamps
Paper Type:	Phosphor Tagged, Block
Adhesive Type:	Pressure-sensitive
Processed at:	Banknote Corporation of America
Stamp Orientation:	Vertical
Image Area (w x h):	0.73 x 0.84 in / 18.542 x 21.336 mm
Stamp Size (w x h):	0.87 x 0.98 in / 22.098 x 24.892 mm
Full Booklet Size (w x h):	5.52 x 1.96 in / 140.208 x 49.784 mm
Colors:	Pantone 3546C, Pantone Cool Gray 5C, Pantone 7687C
Plate Size:	800 stamps per revolution
Plate Number:	"B" followed by three (3) single digits
Marginal Markings:	Header: "U.S. FLAG", 20 First-Class Forever Stamps • ©2022 USPS in peel strip area • Barcode • USPS logo • Promotional text • Plate number in peel strip area

# Pull-Out Information

## Elimination of Corporate Accounts

The Postal Service™ is discontinuing USPSCA®, a corporate account payment method used for Express Mail Corporate Accounts (EMCA) and Priority Mail Express Manifest Accounts. USPSCAs — also known as United States Postal Service Corporate Accounts — are pre-funded by customers to ship documents or packages by Priority Mail Express®.

Effective January 1, 2023, the Postal Service began closing inactive USPSCA accounts and will discontinue the corporate account payment method on July 1 due to rising costs and declining demand.

Customers who use USPSCA are encouraged to switch to an available alternative payment method. Alternative payment methods may include Click-N-Ship® (CNS), USPS Ship, Electronic Verification System (eVS®), ePostage®, PC Postage®, or Meter.

For information on how to migrate, customers should contact their Sales Account/Business Service Network Representative or their local Post Office™, or they can send an email to the Mailing and Shipping Solutions Center at [MSSC@usps.gov](mailto:MSSC@usps.gov).

Any account with a positive or negative balance can make payments or request a refund by contacting [MSSC@usps.gov](mailto:MSSC@usps.gov):

- Refund requests must include a signed authorization on letterhead, the USPSCA (or EMCA) number, business name, and location.

- Accounts with a negative balance after July 1, 2023, will be sent to Accounts Receivable for collection.

Additionally, some customers shipping packages containing cremated remains or shipping to an Army Post Office/Fleet Post Office/Diplomatic Post Office using a Retail Systems Software (RSS) 4 x 6 label (labels printed at the Post Office counter) were *not processed* by the EMCA system. This resulted in affected customer accounts not being charged.

In March 2023, USPS will contact impacted customers by mail (and include invoices dating from October 1, 2021, to the current date).

Customers may continue to use RSS 4 x 6 labels until July 1 and USPS will continue to monitor unprocessed EMCA transactions. Customers will receive a final invoice in July after all USPS Corporate Accounts are permanently closed. We apologize for any inconvenience to our valued USPSCA customers.

For questions about the elimination of Corporate Accounts or the cremated remains/U.S. Possessions, Territories, or Freely Associated States (PTFAS) invoicing, send an email to [MSSC@usps.gov](mailto:MSSC@usps.gov) or call 877-672-0007.

— *Shipping and Commerce Product Management,  
Business Solutions, 3-9-23*

## Fraud

### Invalid USPS Corporate Account Numbers

Provide this listing to Contract Postal Units and acceptance clerks in non-POS locations without intranet access to validate a USPS Corporate Account (USPSCA) number online. For all other locations, online USPSCA validation is preferred. This list supersedes all previous notices, which you must recycle.

Acceptance clerks must not accept Priority Mail Express® shipments bearing an invalid USPSCA number in the “Payment by Account” or “Agreement Number” section of the label or form.

**Note:** The first 6 digits of a 9-digit Custom Designed Service and Next Day Pickup Agreement make up the Corporate Account Number.

005691	021177	033002	<b>105324</b>	124187	223281	473150	<b>608032</b>	754027	875121	931775	995022
008176	021636	056013	107997	125228	<b>326003</b>	495078	<b>708474</b>	757072	<b>901629</b>	933181	995356
010806	021774	070421	110398	152668	380180	<b>537392</b>	725044	<b>811045</b>	904532	941004	997170
015810	022631	076080	113018	185066	<b>441823</b>	553006	752076	853411	921198	941516	
018005	027188	077311	117097	<b>223027</b>	454436	554787	752118	853902	927981	959064	

— Product Information Requirements, Mail Entry and Payment Technology, 3-9-23

### Missing, Lost, or Stolen U.S. Money Order Forms

#### Do Not Cash — Upon Receipt, Notify Local Postal Inspectors

Provide this listing to all Postal Service™ employees responsible for accepting and cashing postal money orders. Destroy all interim notices when the numbers listed appear in the *Postal Bulletin*. The new money order serial

numbers consist of the first 10 digits. The eleventh digit is a check digit only.

Do not cash outdated money orders **104 151 601 to 692 600 000**. Advise holders to send invalid money orders to Canada Post Corporation, Ottawa, Canada K1A 0B1. Check for altered dollar amounts by holding money orders to the light.

<b>010 001 0200 to 0299</b>	043 205 5922 to 5999	083 784 8886 to 8899	174 281 9347 to 9399
010 504 1932 to 1999	044 087 3457 to 3499	083 913 6915 to 6999	175 251 2600 to 0699
011 582 1889 to 1899	044 087 4000 to 4099	084 478 3920 to 3999	176 281 7937 to 7950
011 588 2900 to 3099	044 226 2487 to 2512	086 000 8271 to 8299	176 281 7963 to 7999
012 441 0784 to 0799	044 306 4200 to 4299	086 798 3840 to 3849	176 731 6586 to 6599
012 579 5675 to 5699	044 306 4370 to 4599	088 404 4472 to 4499	178 254 5000 to 9999
013 289 6176 to 6199	045 524 4121 to 4298	088 404 5584 to 5699	178 881 9900 to 9999
013 610 0014 to 0099	046 800 9870 to 9899	088 757 8688 to 8699	<b>180 031 2089 to 2098</b>
014 932 1000 to 1099	047 352 4000 to 4099	088 757 9400 to 9499	180 403 7723 to 7741
014 972 0800 to 0899	048 383 7650 to 7659	089 358 2248 to 2257	180 428 4580 to 0599
015 363 0065 to 0099	048 396 3647 to 3699	<b>090 663 9678 to 9684</b>	182 368 7544 to 0599
017 028 3200 to 3299	<b>051 142 0755 to 0799</b>	091 818 0071 to 0099	182 475 3229 to 3258
018 569 5333 to 5399	051 774 8857 to 8899	093 106 9346 to 9355	182 475 3904 to 3933
018 986 5264 to 5299	051 781 2875 to 2885	093 203 0500 to 0599	182 631 0031 to 0099
019 518 2814 to 2899	051 977 7010 to 7023	093 684 3630 to 3699	182 911 6539 to 6600
020 698 5159 to 5199	052 058 7115 to 7199	094 081 5074 to 5099	184 218 2760 to 2799
<b>020 844 7307 to 7399</b>	054 450 1130 to 1167	094 216 2555 to 2599	185 828 1474 to 1499
020 972 8948 to 8999	057 670 0563 to 0599	094 580 7062 to 7099	186 132 7583 to 0599
022 021 9110 to 9181	058 187 3836 to 3899	094 639 4200 to 4299	186 629 0589 to 0599
022 037 1411 to 1499	058 523 3003 to 3099	095 070 7186 to 7199	187 184 6177 to 0199
022 527 9201 to 9210	058 591 1153 to 1299	095 076 8300 to 8399	187 323 8200 to 8299
022 529 1882 to 1899	058 895 3746 to 3799	095 354 6864 to 6899	187 441 6080 to 6099
023 637 7169 to 7199	059 986 0814 to 0899	097 224 1350 to 1599	188 831 6774 to 6799
024 380 4100 to 4199	<b>060 406 7650 to 7699</b>	<b>100 160 3800 to 3899</b>	188 835 6370 to 6399
024 496 6870 to 6896	063 491 8122 to 8199	104 667 6400 to 6499	189 083 1064 to 1099
025 092 0987 to 0999	063 916 9968 to 9999	104 876 8937 to 8999	189 660 9583 to 9599
025 369 5535 to 5599	064 091 4500 to 4599	112 049 4413 to 4499	<b>191 179 0377 to 0399</b>
025 729 1151 to 1199	065 170 0471 to 0499	112 870 9765 to 9799	192 050 5762 to 5781
025 729 1643 to 1799	065 255 7909 to 7999	113 319 2000 to 2099	194 456 8600 to 0699
026 492 3180 to 3199	065 392 6345 to 6399	114 402 3850 to 3899	195 194 6881 to 6899
027 361 0430 to 0499	066 099 2014 to 2099	114 866 5368 to 5397	195 874 1112 to 1199
027 369 4482 to 4495	066 648 2880 to 2899	116 154 2800 to 2899	196 979 0524 to 0599
027 671 8762 to 8776	066 787 3639 to 3699	116 986 4400 to 4499	197 244 6100 to 6199
027 787 9886 to 9899	066 845 7500 to 9999	117 175 1647 to 5169	197 244 6300 to 6399
027 965 9487 to 9499	067 093 3869 to 3899	117 951 4687 to 4699	197 244 6400 to 6499
028 100 8069 to 8099	068 895 0334 to 0399	117 951 5200 to 5299	197 244 6500 to 6599
028 191 1852 to 1999	<b>070 724 4488 to 4499</b>	119 786 3051 to 3064	197 244 6600 to 6699
028 850 3000 to 3199	070 841 9181 to 9199	119 815 8961 to 6199	197 244 6700 to 6799
029 510 1500 to 1599	070 844 2546 to 2599	119 850 7400 to 7499	197 244 6800 to 8999
<b>030 687 0903 to 0999</b>	070 916 1340 to 1399	119 850 7700 to 7999	198 285 2556 to 2566
030 701 3442 to 3499	071 047 5768 to 5799	<b>121 634 0460 to 0499</b>	199 105 0778 to 0799
031 077 4507 to 4799	071 179 9800 to 9899	122 451 9879 to 9899	199 678 2968 to 2999
032 295 7500 to 9999	071 386 3682 to 3699	122 714 6805 to 6900	<b>202 748 5133 to 5199</b>
034 394 1000 to 1099	071 507 6840 to 6899	124 916 0304 to 0499	202 748 5245 to 5299
034 943 0400 to 0799	072 045 9641 to 9699	126 423 0136 to 0169	202 748 5300 to 5399
035 035 4337 to 4399	072 675 8287 to 8299	127 500 2328 to 2399	202 748 5400 to 5499
037 312 7500 to 7599	073 763 0867 to 0876	<b>160 901 2254 to 2299</b>	203 256 1240 to 1299
037 706 9578 to 9599	073 763 0878 to 0887	161 103 6581 to 6599	204 230 3577 to 3595
037 805 3677 to 3699	073 763 0889 to 0898	161 194 2857 to 0899	205 019 0174 to 0199
037 909 5490 to 5499	077 617 5481 to 5499	162 032 4447 to 4499	206 936 3184 to 3199
037 931 4660 to 4699	077 999 4001 to 4090	163 257 1085 to 1099	207 196 9900 to 9999
039 145 6521 to 6595	078 174 4475 to 4499	164 359 2406 to 2499	207 204 0700 to 0799
<b>040 024 3901 to 3999</b>	078 219 4931 to 4999	166 101 1433 to 1499	207 204 0800 to 0899
040 674 7100 to 7199	078 250 4756 to 4799	167 555 5201 to 5212	207 514 3857 to 3899
040 688 8816 to 8899	078 823 8312 to 8399	167 555 5214 to 5299	208 556 4707 to 4799
041 299 6752 to 6799	079 374 0300 to 2499	169 618 6274 to 6299	<b>210 057 4038 to 4047</b>
041 623 8889 to 8899	079 807 2342 to 2399	<b>171 806 6878 to 6893</b>	210 221 0548 to 0599
041 803 6565 to 6599	<b>082 721 0228 to 0254</b>	173 639 4685 to 4699	214 061 4711 to 4724
043 129 1968 to 1997	083 140 5000 to 7499	174 238 2779 to 2799	214 303 6311 to 6325



262 567 1788 to 1799  
263 254 2500 to 2500  
263 340 0000 to 0099  
263 340 0100 to 0199  
263 340 0500 to 0599  
263 340 0600 to 0699  
263 340 2700 to 2799  
263 340 2800 to 2899  
263 340 3000 to 3099  
264 341 2360 to 2399  
264 380 4000 to 4099  
264 380 4100 to 4199  
264 799 6049 to 6099  
264 860 7832 to 7868  
265 127 3658 to 3699  
265 380 7111 to 7137  
265 444 4762 to 4799  
265 548 7074 to 7099  
266 106 0000 to 2499  
266 129 5809 to 5899  
266 673 0000 to 2499  
266 749 7900 to 7999  
266 868 0952 to 0999  
266 868 1028 to 1099  
266 868 1100 to 1199  
266 868 1200 to 1299  
267 296 1237 to 1299  
267 324 8946 to 8998  
268 072 1203 to 1299  
**271 660 4333 to 4400**  
273 520 0000 to 9999  
273 520 6000 to 8999  
273 775 7700 to 7899  
273 882 1913 to 1998  
274 750 0300 to 0400  
274 782 0549 to 0599  
279 517 9330 to 9399  
279 517 9594 to 9599  
279 517 9623 to 9699  
**282 667 2500 to 4999**  
**302 000 0000 to 9999**  
**349 746 2056 to 2099**  
**350 518 7350 to 7374**  
**360 011 1690 to 1699**  
360 168 6008 to 6099  
360 173 8800 to 8899  
360 324 2326 to 2399  
362 861 3064 to 3099  
**373 006 2176 to 2199**  
374 768 2600 to 2699  
375 169 4400 to 4599  
375 829 3400 to 3499  
375 851 9100 to 9199  
376 196 0911 to 0999  
378 085 3679 to 3699  
378 351 1063 to 1099  
379 843 5100 to 5199  
**380 093 9600 to 9699**  
380 165 1165 to 1199  
381 325 4500 to 4599  
381 604 2510 to 2699  
381 645 9525 to 9599  
383 314 3968 to 3999  
383 892 1000 to 1344  
383 892 1382 to 1399  
384 925 3641 to 3654  
385 568 2331 to 2399  
385 599 7554 to 7575  
385 774 2024 to 2099  
386 624 1412 to 1599  
386 883 8936 to 8999  
387 314 5574 to 5599  
387 837 6300 to 6399  
388 828 0656 to 0699

389 696 2400 to 2799  
389 846 3104 to 3135  
389 846 3145 to 3195  
389 887 9211 to 9230  
389 887 9234 to 9299  
**390 001 3182 to 3199**  
390 001 3500 to 3699  
390 545 5974 to 5999  
391 104 6146 to 6199  
391 574 1466 to 1499  
391 783 3020 to 3599  
391 792 6100 to 6199  
392 668 2956 to 2999  
392 854 8500 to 8899  
393 584 7566 to 7699  
393 650 0074 to 0099  
393 838 8316 to 8499  
393 893 6007 to 6099  
394 126 6907 to 6999  
394 189 0405 to 0599  
394 822 3243 to 3278  
394 990 1810 to 1899  
395 343 3264 to 3299  
395 373 3035 to 3099  
395 396 9649 to 9799  
395 970 3240 to 3299  
397 622 4054 to 4099  
397 819 8902 to 8999  
398 149 7200 to 7699  
399 070 0872 to 0899  
399 156 7119 to 7199  
399 203 5064 to 5099  
399 296 9910 to 9999  
399 396 8935 to 8999  
399 792 7775 to 7799  
399 792 8300 to 8399  
**400 427 1051 to 1999**  
401 045 1505 to 1549  
401 045 1571 to 1599  
401 294 2700 to 2799  
401 310 9505 to 9599  
401 382 5312 to 5399  
402 578 7876 to 7899  
403 125 6744 to 6799  
403 260 7000 to 7499  
403 280 6470 to 6499  
403 685 8600 to 8699  
404 003 0300 to 0399  
404 041 8838 to 8899  
404 071 4268 to 4299  
404 347 5356 to 5399  
404 347 5548 to 5599  
404 726 4500 to 4599  
404 961 5001 to 5199  
405 325 0188 to 0198  
406 009 4587 to 4599  
406 260 6830 to 6899  
406 459 6641 to 6999  
406 733 3000 to 3999  
407 545 1557 to 1599  
407 594 0412 to 0599  
407 692 9100 to 9299  
407 959 2190 to 2199  
408 265 2275 to 2288  
408 499 7700 to 7799  
408 499 7900 to 7999  
408 682 8484 to 8599  
408 698 7015 to 7099  
409 072 3941 to 3999  
**410 491 2311 to 2399**  
410 694 8400 to 8599  
410 775 1500 to 1599  
410 795 7927 to 7999  
410 867 0917 to 0966

410 867 0970 to 0999  
411 868 1023 to 1199  
411 922 2322 to 2399  
412 193 0900 to 0999  
412 395 8599 to 8699  
412 485 6500 to 6599  
412 485 6610 to 6699  
412 885 5953 to 5999  
414 193 3608 to 3674  
414 193 3677 to 3699  
414 411 7348 to 7399  
414 640 0757 to 0799  
414 965 1727 to 1799  
417 302 8104 to 8199  
417 387 6532 to 6599  
417 496 6800 to 6999  
417 871 9250 to 9299  
417 930 9533 to 9599  
418 164 6500 to 6799  
418 423 9863 to 9899  
418 633 5922 to 5999  
418 719 8520 to 8599  
418 744 2235 to 2299  
418 962 2848 to 2899  
419 543 0286 to 0299  
419 730 0300 to 0399  
**420 277 0015 to 0049**  
420 599 0734 to 0798  
420 661 4115 to 4199  
420 758 9500 to 9699  
420 969 3951 to 3971  
420 969 3973 to 3999  
421 116 3565 to 3599  
421 130 9300 to 9399  
421 313 4500 to 4999  
421 364 5537 to 5599  
421 656 2609 to 2699  
421 988 9700 to 9799  
422 172 4667 to 4699  
422 484 4212 to 4299  
422 556 1270 to 1299  
422 587 7024 to 7099  
422 819 7533 to 7599  
422 842 5073 to 5087  
422 907 7563 to 7599  
424 500 6050 to 6099  
424 641 8500 to 8599  
424 871 6600 to 6699  
425 298 2352 to 2399  
425 418 4269 to 4299  
425 418 4405 to 4499  
426 547 4566 to 4599  
427 412 6337 to 6499  
427 481 0900 to 0999  
428 027 2742 to 2752  
429 474 4172 to 4199  
429 889 2900 to 2999  
**430 150 4401 to 4599**  
430 172 9800 to 9899  
430 177 1900 to 2099  
430 444 9500 to 9699  
430 664 4070 to 4099  
432 168 8419 to 8499  
432 708 6800 to 6999  
432 744 1544 to 1599  
432 995 9775 to 9799  
433 003 5800 to 5899  
433 757 3047 to 3099  
433 765 4003 to 4099  
434 482 7060 to 7199  
434 513 2386 to 2399  
434 968 3076 to 3092  
435 303 1831 to 1842  
435 303 1986 to 1999

435 666 6092 to 6399  
436 082 6400 to 6899  
436 160 6441 to 6499  
437 316 7115 to 7199  
437 427 0500 to 3499  
439 179 2300 to 2399  
439 310 0458 to 0499  
**440 698 1947 to 1999**  
440 858 6300 to 6399  
440 858 6420 to 7299  
441 199 1655 to 1699  
443 127 3648 to 3699  
443 127 4000 to 4099  
443 673 7900 to 7999  
443 800 9335 to 9399  
444 382 8822 to 8899  
444 390 1667 to 1699  
444 457 3854 to 3899  
**450 048 4173 to 4199**  
450 048 4442 to 4699  
450 560 5173 to 5199  
450 620 3077 to 3099  
450 620 3135 to 3199  
450 780 2716 to 2799  
450 801 2700 to 2799  
451 109 2967 to 2984  
451 115 4110 to 4125  
451 115 4127 to 4199  
451 746 0700 to 0799  
452 265 0074 to 0099  
452 265 0246 to 0299  
452 265 0335 to 0999  
452 509 1169 to 1199  
452 855 6471 to 6499  
452 890 4679 to 4799  
452 900 8215 to 8238  
453 117 9146 to 9199  
453 334 3631 to 3699  
453 603 7841 to 7891  
453 650 1140 to 1199  
453 741 1300 to 1399  
454 013 2919 to 2999  
454 186 2411 to 2499  
454 268 4883 to 4899  
454 302 5400 to 5499  
454 490 8300 to 8399  
454 547 7434 to 7499  
454 922 4867 to 4895  
455 221 1348 to 1499  
455 364 2147 to 2199  
455 399 5400 to 5499  
455 476 0676 to 0699  
455 543 0618 to 0699  
456 410 9006 to 9099  
456 470 4146 to 4299  
456 619 4460 to 4499  
457 333 2686 to 2699  
457 729 1767 to 1777  
457 937 8615 to 8699  
458 028 9810 to 9899  
458 057 2712 to 2999  
458 069 9537 to 9599  
458 069 9665 to 9699  
458 337 5222 to 5299  
458 354 7653 to 7999  
458 671 8678 to 8699  
458 671 8721 to 8798  
458 847 5044 to 5999  
459 274 7624 to 7699  
459 365 5432 to 5499  
459 378 5764 to 5799  
459 472 4816 to 4999  
**460 349 6878 to 6899**  
460 550 1909 to 1999









## Missing, Lost, or Stolen Canadian Money Order Forms

**Do Not Cash — Upon Receipt, Notify Local Postal Inspectors**

Provide this listing to all Postal Service™ employees responsible for accepting and cashing postal money orders. Destroy all interim notices when the numbers listed appear in the *Postal Bulletin*. The new money order serial

numbers consist of the first 9 digits. The tenth digit is a check digit only.

Do not cash outdated money orders **104 151 601 to 692 600 000**. Advise holders to send invalid money orders to Canada Post Corporation, Ottawa, Canada K1A 0B1. Check for altered dollar amounts by holding money orders to the light.

719 869 731	to	9 760	728 702 338	to	2 400	734 950 111	to	0 170	742 325 668	to	5 700
<b>720 227 871</b>	<b>to</b>	<b>7 930</b>	728 915 371	to	5 850	735 120 331	to	0 840	742 408 771	to	8 830
720 227 949	to	7 960	728 953 141	to	3 410	735 283 008	to	3 020	742 512 120	to	2 150
720 368 543	to	8 570	728 954 280	to	4 310	735 293 131	to	3 220	742 684 849	to	4 890
720 392 151	to	2 570	729 169 081	to	9 140	735 635 010	to	5 040	742 839 553	to	9 630
720 556 491	to	6 640	729 363 841	to	3 870	735 783 961	to	3 990	742 913 668	to	3 700
720 558 621	to	8 650	729 682 891	to	3 190	735 803 401	to	3 430	742 917 287	to	7 296
720 575 361	to	5 570	729 838 940	to	9 070	736 005 420	to	5 440	742 921 891	to	1 980
720 590 152	to	0 179	729 839 101	to	9 130	736 366 021	to	6 110	742 983 631	to	3 810
721 638 331	to	9 170	<b>730 077 683</b>	<b>to</b>	<b>7 840</b>	736 624 456	to	4 500	743 020 021	to	0 170
721 815 391	to	5 420	730 109 847	to	9 880	736 670 851	to	1 060	743 206 491	to	6 500
721 969 713	to	9 740	730 373 761	to	3 850	736 767 061	to	7 090	743 235 992	to	6 050
722 072 137	to	2 160	730 501 951	to	2 130	736 767 093	to	7 120	743 940 631	to	0 900
722 378 265	to	8 280	730 519 379	to	9 470	736 982 191	to	2 370	743 978 011	to	8 070
722 413 990	to	4 004	730 569 278	to	9 360	736 982 551	to	2 730	744 234 751	to	4 780
722 764 948	to	4 980	730 711 711	to	1 740	737 110 141	to	0 170	744 499 591	to	9 680
722 825 840	to	5 889	730 722 991	to	3 230	737 185 501	to	5 710	744 626 901	to	6 910
723 153 841	to	3 850	730 845 970	to	5 990	737 317 321	to	7 350	745 388 794	to	8 910
723 237 616	to	7 630	730 888 291	to	8 320	737 517 781	to	7 840	746 446 806	to	6 820
723 331 081	to	1 110	730 927 591	to	7 680	737 628 181	to	8 210	746 818 351	to	8 410
723 496 443	to	6 470	731 307 914	to	7 930	737 634 258	to	4 270	747 245 266	to	5 280
723 967 291	to	7 320	731 402 431	to	2 460	738 361 971	to	1 980	747 364 813	to	4 830
724 655 196	to	5 340	731 407 232	to	7 320	738 447 601	to	7 660	747 501 434	to	1 450
724 711 441	to	1 500	731 588 301	to	8 340	738 648 355	to	8 450	747 739 891	to	0 070
724 711 538	to	1 560	731 767 273	to	7 320	738 849 811	to	9 900	748 148 649	to	8 760
724 793 221	to	3 250	731 781 061	to	1 120	738 892 270	to	2 290	748 259 960	to	9 970
724 908 109	to	8 120	731 837 821	to	7 910	738 997 259	to	7 380	748 565 162	to	5 280
724 937 461	to	7 670	731 841 377	to	1 450	739 161 451	to	1 540	748 874 988	to	5 030
725 163 118	to	3 151	732 018 481	to	8 600	739 219 381	to	9 440	749 137 381	to	7 410
725 202 735	to	2 750	732 067 972	to	8 370	739 740 151	to	0 180	749 190 192	to	0 210
725 398 591	to	8 800	732 188 649	to	8 670	739 793 491	to	3 520	749 685 421	to	5 450
725 464 591	to	4 920	732 193 460	to	3 470	739 793 527	to	3 550	749 846 791	to	6 850
725 475 321	to	5 330	732 201 241	to	1 390	739 942 621	to	2 650	749 993 131	to	3 580
725 711 057	to	1 070	732 220 431	to	0 440	739 999 231	to	9 320	<b>750 071 587</b>	<b>to</b>	<b>1 610</b>
725 738 581	to	8 730	732 355 201	to	5 380	<b>740 011 517</b>	<b>to</b>	<b>1 530</b>	750 408 167	to	8 183
725 981 311	to	1 430	732 472 320	to	2 560	740 030 701	to	0 970	750 438 421	to	8 501
725 987 835	to	7 880	732 541 605	to	1 620	740 261 740	to	1 820	750 743 911	to	4 030
726 060 811	to	0 900	732 572 221	to	2 490	740 265 811	to	6 290	750 779 118	to	9 400
726 391 970	to	2 520	732 586 479	to	6 710	740 299 111	to	9 170	750 910 981	to	1 010
726 484 771	to	4 800	732 994 037	to	4 080	740 299 231	to	9 260	750 960 841	to	0 900
726 493 351	to	5 300	733 163 449	to	3 460	740 329 266	to	9 320	751 296 211	to	6 240
726 504 031	to	4 063	733 297 171	to	7 290	740 889 081	to	9 090	751 539 121	to	9 180
726 504 070	to	4 090	733 446 631	to	7 110	741 010 421	to	0 530	751 541 311	to	1 790
726 504 331	to	4 390	733 474 665	to	4 770	741 113 041	to	3 370	751 757 641	to	7 700
726 563 701	to	4 060	733 704 482	to	4 570	741 373 891	to	4 340	751 936 951	to	7 010
726 599 371	to	9 460	733 751 041	to	1 130	741 452 369	to	2 490	751 951 861	to	1 890
726 626 356	to	6 370	734 009 101	to	9 130	741 492 991	to	3 140	751 999 021	to	9 110
727 182 271	to	2 510	734 290 759	to	0 770	741 553 460	to	3 470	752 139 516	to	9 570
727 416 181	to	6 240	734 389 273	to	9 290	741 764 431	to	4 520	752 182 892	to	2 950
727 481 431	to	1 460	734 440 031	to	0 111	741 764 431	to	4 520	752 206 861	to	7 100
727 749 241	to	9 780	734 797 201	to	7 320	742 178 834	to	8 880	752 295 241	to	5 600
728 382 331	to	2 480	734 939 611	to	9 640	742 325 500	to	5 520	752 731 351	to	1 410



819 278 540	to 8 670	822 703 442	to 3 470	826 226 644	to 6 670	828 539 341	to 9 370
819 544 681	to 4 740	822 900 991	to 1 020	826 582 951	to 3 430	828 732 331	to 2 390
819 928 441	to 8 650	822 925 951	to 6 100	826 720 201	to 0 230	828 807 781	to 7 840
<b>820 034 406</b>	<b>to 4 430</b>	823 284 931	to 4 990	827 005 671	to 5 830	828 830 952	to 0 963
820 070 761	to 1 540	823 293 031	to 3 210	827 287 861	to 7 950	828 939 781	to 0 050
820 191 342	to 1 360	823 556 011	to 6 100	827 291 502	to 1 520	829 002 721	to 2 870
820 274 856	to 4 880	824 078 341	to 8 370	827 575 381	to 5 470	829 005 301	to 5 540
820 600 171	to 0 230	824 156 325	to 6 340	827 609 085	to 9 100	829 080 241	to 0 330
821 172 241	to 2 360	824 511 252	to 1 270	827 619 811	to 9 840	829 160 986	to 1 000
821 229 661	to 9 720	824 588 281	to 8 370	827 883 511	to 3 600	829 176 841	to 6 930
821 229 743	to 9 780	825 140 397	to 0 460	828 160 441	to 0 530	829 471 561	to 1 590
821 903 731	to 3 910	825 409 651	to 9 680	828 376 201	to 6 260	829 561 065	to 1 080
821 927 841	to 7 850	825 472 171	to 2 200	828 441 602	to 1 630	829 566 481	to 6 510
822 505 801	to 5 830	826 042 898	to 2 920	828 539 316	to 9 340	829 569 931	to 9 960

— Criminal Investigations Group, U.S. Postal Inspection Service, 3-9-23

### Verifying U.S. Postal Service Money Orders

Follow these steps to cash a Postal Service™ money order:

1. Check that the amount does not exceed the legal limit: \$1,000 for domestic, and \$700 for international Postal Service money orders.
2. Check that the proper security features are present:
  - When held to the light, a watermark of Benjamin Franklin is repeated from top to bottom on the left side.
  - When held to the light, a dark line (security thread) runs from top to bottom with the word “USPS” repeated.
  - When there is discoloration around the dollar amounts, this might indicate the amounts were changed.

These appear in Postal Service Notice 299, *U.S. Postal Money Order Reference Card*, or online at [usps.com/shop/money-orders.htm](https://usps.com/shop/money-orders.htm).

3. If the money order seems suspicious, call the U.S. Postal Service Money Order Verification System at 866-459-7822.

Provide this information to local banks and retailers, as they also receive Postal Service money orders for cashing.

— *Delivery and Retail Customer Service Operations, 3-9-23*

### Counterfeit Canadian Money Order Forms

#### Do Not Cash

To be posted and used by retail window employees. As directed, destroy previous notices. Destroy all interim notices when the numbers listed appear in the *Postal Bulletin*.

671,819,086	683,594,542	687,262,503
676,612,640	684,683,610	687,262,525
677,891,039	686,619,878	687,262,526
678,282,493	686,619,886	687,287,578
678,916,031	686,619,887	687,287,581
679,552,215	686,794,382	687,287,582
679,694,334	686,794,426	694,063,898
679,751,983	686,794,427	694,063,899
679,800,207	686,794,431	694,063,980
681,130,536	687,262,502	701,321,725
681,844,376		

— *Criminal Investigations Group, U.S. Postal Inspection Service, 3-9-23*

### Toll-Free Number Available to Verify Canadian Money Orders

The Canada Post Corporation has a toll-free number that cashing agents can call to verify the validity of Canadian Postal Money Orders. The number is 800-563-0444.

This toll-free number is printed on the back of the Canadian Postal Money Orders.

— *Criminal Investigations Group, U.S. Postal Inspection Service, 3-9-23*

## Other Information

### Overseas Military/Diplomatic Mail

Mail addressed to military and diplomatic post offices overseas is subject to certain conditions or restrictions of mailing regarding content, preparation, and handling. The APO/FPO/DPO table outlines these conditions by APO/FPO/DPO ZIP Codes™ through the use of footnoted mailing restrictions codes (see the [Restrictions](#) page following the table).

Acceptance clerks must use the table with the Retail System Software terminal to determine which APO/FPO/DPO ZIP Codes are active and which conditions of mailing apply.

The entries under “Changes” appear in bold in the following APO/FPO/DPO table:

### Changes

<b>APO/FPO/DPO</b>	<b>Action</b>	<b>Effective Date</b>	<b>See Restrictions</b>
APO AE 09008	Add C; Remove Z	02/16/2023	A-B-C-C2-F-F3-H-N-R-S-V-Z1
APO AE 09017	Add C; Remove Z	02/15/2023	A-B-C-C2-F-F3-H-N-R-S-V-Z1
APO AE 09018	Remove Z	02/16/2023	A-B-C-C2-F-F3-H-N-R-S-V-Z1
APO AE 09103	Remove Z	02/16/2023	A-B-C-C2-F-F3-H-N-R-S-V-Z1
DPO AE 09160	Add S, X; Remove D, F	02/13/2023	B-C-C2-F1-F3-H-J-L-M-N-R-R1-S-T-U-V-X-Z1
DPO AE 09170	Add C; Remove F	02/13/2023	A-B-C-C2-F1-F3-J-L-M-N-R-R1-S-T-V-X-Z1
DPO AE 09171	Add C; Remove F	02/13/2023	A-B-C-C1-C2-E3-F1-F3-J-L-M-N-R-R1-S-T-V-X-Z1
DPO AE 09174	Remove F	02/13/2023	B-C-C2-F1-F3-L-N-R-R1-S-T-V-Z1
DPO AE 09175	Add C; Remove F	02/13/2023	A-B-C-C1-C2-E2-F1-F3-H1-J-L-M-N-R-R1-S-T-V-W-X-Z1
DPO AE 09176	Add C; Remove F	02/13/2023	A-B-C-C2-F1-F3-J-L-M-N-R-R1-S-T-V-X-Z1
DPO AE 09179	Remove F	02/13/2023	A-B-C-C1-C2-F1-F3-J-L-M-N-R-R1-S-T-V-X-Z1
DPO AE 09203	Add S, X; Remove F	02/13/2023	A-B-C-C1-C2-F1-F3-I3-J-L-M-N-R-R1-S-T-V-X-Z1
DPO AE 09213	Add C, S, X; Remove F	02/13/2023	B-C-C2-F1-F3-H-J-L-M-N-R-R1-S-T-U-V-X-Z1
DPO AE 09281	Add C; Remove F	02/13/2023	A-B-C-C1-C2-E2-E3-F1-F3-H-H1-J-L-M-N-R-R1-S-T-V-X-Z1
DPO AE 09282	Add C; Remove F	02/13/2023	A-B-C-C1-C2-E2-E3-F1-F3-H-H1-J-L-M-N-R-R1-S-T-V-X-Z1
DPO AE 09283	Add C, C2, F1; Remove F	02/13/2023	A-B-C-C2-E-E1-F1-F3-L-M-N-R-S-T-V-X-Z1
DPO AE 09284	Add F1; Remove F, X, Z1	02/13/2023	A-B-C-C2-F1-F3-I3-L-M-N-R-S-T-V-Z
DPO AE 09301	Add C; X; Remove F	02/13/2023	A-B-C-C1-C2-E2-F1-F3-H1-I3-L-M-N-R-R1-S-T-U4-V-X-Z1
DPO AE 09310	Add C; Remove C2, F, Z1	02/13/2023	A-B-C-C1-E2-F1-F3-H1-I3-L-M-N-R-R1-S-T-U4-V-Z
DPO AE 09312	Add C; Remove C2, F	02/13/2023	A-B-C-C1-E2-F1-F3-H1-I3-L-M-N-R-R1-S-T-U4-V-X-Z1
FPO AE 09424	Open	02/21/2023	B-C-C2-F1-F3-M-N-R-S-U-Z1
DPO AE 09467	Add C, C2, F1, W; Remove F	02/13/2023	B-C-C2-E-E1-F1-F3-J-L-M-N-R-S-T-V-W-X-Z1
DPO AE 09488	Add F1, R	02/13/2023	A-B-C-C1-C2-E2-F1-F3-J-L-M-N-R-S-T-V-W-X-Z1
DPO AE 09498	Add C, M, S, X; Remove F	02/13/2023	B-C-C1-C2-F1-F3-J-L-M-N-R-R1-S-T-V-X-Z1
DPO AE 09614	Add C, S, X; Remove F	02/13/2023	A-B-C-C1-C2-E2-F1-F3-H1-J-L-M-N-R-R1-S-T-U-V-X-Z1
DPO AE 09624	Add M, S, X; Remove F, Z	02/13/2023	B-C-C2-F1-F3-I3-L-M-N-R-R1-S-T-U-V-X-Z1
DPO AE 09642	Add C, S, X; Remove F	02/13/2023	B-C-C2-F1-F3-J-L-M-N-R-S-T-U-V-X
DPO AE 09701	Add C, S, X; Remove F	02/13/2023	A-B-C-C1-C2-F1-F3-J-L-M-N-R-R1-S-T-V-X-Z1
DPO AE 09707	Add C, S, X; Remove F	02/13/2023	B-C-C2-F1-F3-J-L-M-N-R-R1-S-T-V-X-Z1
DPO AE 09709	Add C, S, X; Remove F	02/13/2023	B-C-C1-C2-E2-F1-F3-H-H1-J-L-N-R-R1-S-T-V-X-Z1
DPO AE 09716	Add S, X; Remove F	02/13/2023	B-C-C2-F1-F3-J-L-M-N-R-R1-S-T-V-X-Z1
DPO AE 09723	Add C, S, X; Remove F	02/13/2023	B-C-C2-F1-F3-J-L-M-N-R-R1-S-T-V-X-Z1
DPO AE 09727	Add C, S, X; Remove F	02/13/2023	A-B-C-C1-C2-F1-F3-J-L-M-N-R-R1-S-T-V-X-Z1
DPO AE 09728	Add M, S, X; Remove F	02/13/2023	A-B-C-C1-C2-F1-F3-J-L-M-N-R-R1-S-T-V-X-Z1
DPO AE 09730	Add C, S, X; Remove F	02/13/2023	A-B-C-C1-C2-F1-F3-J-L-M-N-R-R1-S-T-V-X-Z1
DPO AE 09731	Add C, S, X; Remove F	02/13/2023	A-B-C-C1-C2-F1-F3-J-L-M-N-R-R1-S-T-V-X-Z1
DPO AE 09734	Add S, X; Remove F	02/13/2023	A-B-C-C1-C2-F1-F3-I3-J-L-M-N-R-R1-S-T-V-X-Z1
DPO AE 09736	Add C, C2, S, X; Remove F	02/13/2023	A-B-C-C1-C2-F1-F3-J-L-M-N-R-R1-S-T-V-X-Z1
DPO AE 09737	Add C, S, X; Remove F	02/13/2023	A-B-C-C1-C2-F1-F3-I3-J-L-M-N-R-R1-S-T-V-W-X-Y-Z1
DPO AE 09738	Add C, S, X; Remove F	02/13/2023	A-B-C-C1-C2-F1-F3-J-L-M-N-R-R1-S-T-V-X-Z1
DPO AE 09739	Add C, S, X; Remove F	02/13/2023	A-B-C-C1-C2-F1-F3-J-L-M-N-R-R1-S-T-V-X-Z1
DPO AE 09741	Add C, S, X; Remove F	02/13/2023	A-B-C-C1-C2-E2-F1-F3-H1-J-L-M-N-R-R1-S-T-V-W-X-Y-Z1
DPO AE 09742	Add C, C1, S, X; Remove F	02/13/2023	A-B-C-C1-C2-F1-F3-J-L-M-N-R-R1-S-T-V-X-Z1



<b>APO/FPO/DPO</b>	<b>Action</b>	<b>Effective Date</b>	<b>See Restrictions</b>
DPO AE 09744	Add C, S, X; Remove F	02/13/2023	A-B-C-C1-C2-F1-F3-J-L-M-N-R-R1-S-T-V-X-Z1
DPO AE 09748	Add C, S, X; Remove F	02/13/2023	A-B-C-C1-C2-F1-F3-J-L-M-N-R-R1-S-T-V-X-Z1
DPO AE 09750	Add C, S, X; Remove F	02/13/2023	A-B-C-C1-C2-F1-F3-J-L-M-N-R-R1-S-T-V-X-Z1
APO AE 09756	Open	03/09/2023	A-B-E3-F-F1-F3-J-L-N-Q-R-R1-S-T-V-Z1
DPO AE 09759	Add M, S, X; Remove F	02/13/2023	A-B-C-C1-C2-E2-F1-F3-J-L-M-N-R-R1-S-T-V-X-Z1
DPO AE 09762	Add C, M, S, Y; Remove F	02/13/2023	A-B-C-C1-E3-F1-F3-J-L-M-N-R-R1-S-T-V-Y-Z1
DPO AE 09769	Add S, X; Remove F.	02/13/2023	A-B-C-C1-C2-F1-F3-J-L-M-N-R-R1-S-T-V-X-Z1
DPO AE 09777	Add S, X; Remove F	02/13/2023	A-B-C-C1-C2-E1-F1-F3-J-L-M-N-R-R1-S-T-V-X-Z1
DPO AE 09802	Add X; Remove F	02/13/2023	A-B-C-C2-D-F1-F3-H-H1-I3-L-M-N-R-R1-S-T-V-W-X-Z1
DPO AE 09808	Add C, M, S, X; Remove F	02/13/2023	A-B-C-C1-C2-E2-F1-F3-H-H1-J-L-M-N-R-R1-S-T-V-X-Z1
DPO AE 09809	Add C, M, R, S, X; Remove F	02/13/2023	B-C-C1-C2-E3-F1-F3-J-L-M-N-R-S-T-V-X-Z1
DPO AE 09813	Add C, S, X; Remove F	02/13/2023	A-B-C-C1-C2-E2-E3-F1-F3-J-L-N-R-R1-S-T-V-X-Z1
DPO AE 09814	Add C, M, S, X; Remove F	02/13/2023	B-C-C2-E2-E3-F1-F3-I3-J-L-M-N-R-R1-S-T-V-X-Z1
DPO AE 09816	Add C, M, S, X; Remove F	02/13/2023	A-B-C-C1-C2-E2-E3-F1-F3-J-L-M-N-R-R1-S-T-V-X-Z1
DPO AE 09817	Add C, S, X; Remove F	02/13/2023	A-B-C-C1-C2-E2-E3-F1-F3-H-H1-J-L-M-N-R-R1-S-T-V-X-Z1
DPO AE 09820	Add C, S, X; Remove F	02/13/2023	A-B-C-C2-F1-F3-H-H1-J-L-M-N-R-R1-S-T-V-X-Z1
DPO AE 09823	Add C, S, X; Remove F	02/13/2023	A-B-C-C1-C2-F1-F3-J-L-M-N-R-R1-S-T-V-X-Z1
DPO AE 09825	Add C, S, X; Remove F	02/13/2023	A-B-C-C1-C2-F1-F3-J-L-M-N-R-R1-S-T-V-X-Z1
DPO AE 09826	Add C, S, X; Remove F	02/13/2023	A-B-C-C1-C2-E1-E2-E3-F1-F3-J-L-M-N-R-R1-S-T-V-W-X-Z1
DPO AE 09828	Add C, M, S, X; Remove F	02/13/2023	A-B-C-C1-C2-F1-F3-I3-L-M-N-R-R1-S-T-V-X-Z1
DPO AE 09831	Add C, M, S, X; Remove F	02/13/2023	B-C-C1-C2-F1-F3-J-L-M-N-R-R1-S-T-V-X-Z1
DPO AE 09836	Add C, S, T, X; Remove F	02/13/2023	A-B-C-C1-C2-F1-F3-J-L-M-N-R-R1-S-T-V-X-Z1
DPO AE 09842	Add C, E3, M, S, X; Remove F	02/13/2023	A-B-C-C1-C2-E3-F1-F3-J-L-M-N-R-R1-S-T-V-X-Z1
DPO AE 09844	Add C, S, X; Remove F	02/13/2023	A-B-C-C1-C2-F1-F3-J-L-M-N-R-R1-S-T-V-X-Z1
DPO AE 09845	Add C, S, X; Remove F	02/13/2023	A-B-C-C1-C2-E3-F1-F3-J-L-M-N-R-R1-S-T-V-X-Z1
DPO AE 09846	Add C, M, S, X; Remove F	02/13/2023	A-B-C-C1-C2-F1-F3-J-L-M-N-R-R1-S-T-V-X-Z1
DPO AE 09847	Add X; Remove F	02/13/2023	B-C-C2-F1-F3-J-L-M-N-R-R1-S-T-V-X-Z1
DPO AE 09854	Add C, M, X; Remove F	02/13/2023	A-B-C-C1-C2-F1-F3-J-L-M-N-R-R1-S-T-V-X-Z1
DPO AE 09857	Add C, X; Remove F	02/13/2023	A-B-C-C2-E2-F1-F3-I3-L-M-N-R-R1-S-T-V-X-Z1
DPO AE 09860	Add C, X; Remove F	02/13/2023	A-B-C-C2-F1-F3-J-L-M-N-R-R1-S-T-V-X-Z1
DPO AE 09862	Remove F	02/13/2023	A-B-C-C2-F1-F3-I3-L-M-N-R-R1-S-T-V-X-Z1
DPO AE 09864	Add X	02/13/2023	A-B-C-C1-C2-E2-F1-F3-L-M-N-R-R1-S-T-V-W-X-Z1
DPO AE 09867	Add X	02/13/2023	A-B-C-C1-C2-E2-F1-F3-L-M-N-R-R1-S-T-V-W-X-Z1
DPO AE 09869	Add C, X	02/13/2023	A-B-C-C1-C2-E2-F1-F3-L-M-N-R-R1-S-T-V-W-X-Z1
DPO AE 09870	Add C, X; Remove F	02/13/2023	A-B-C-C1-C2-E2-F1-F3-H1-I3-L-M-N-R-R1-S-T-U4-V-X-Z1
DPO AE 09873	Add C, X; Remove F	02/13/2023	A-B-C-C1-C2-E2-F1-F3-H1-I3-L-M-N-R-R1-S-T-U4-V-X-Z1
DPO AE 09874	Add C, X; Remove F	02/13/2023	A-B-C-C1-C2-E2-F1-F3-H1-I3-L-M-N-R-R1-S-T-U4-V-X-Z1
DPO AE 09892	Add C, S, X; Remove F	02/13/2023	A-B-C-C1-C2-E2-F1-F3-J-L-M-N-R-R1-S-T-V-X-Z1
DPO AA 34001	Add C, X; Remove F	02/13/2023	A-B-C-C1-C2-F1-F3-J-L-M-N-R-R1-S-T-V-X-Z1
DPO AA 34002	Add C, S, X; Remove F	02/13/2023	B-C-C1-C2-F1-F3-J-L-M-N-R-R1-S-T-V-X-Z1
DPO AA 34004	Add C, S, X; Remove F	02/13/2023	B-C-C1-C2-F1-F3-J-L-M-N-R-R1-S-T-V-X-Z1
DPO AA 34008	Add C, F3, S, X; Remove F	02/13/2023	B-C-C1-C2-D-E1-F1-F3-H-H1-J-L-M-N-R-R1-S-T-V-X-Z
DPO AA 34011	Add C, S, X; Remove F	02/13/2023	B-C-C1-C2-E2-F1-F3-J-L-M-N-R-R1-S-T-V-X-Z1
DPO AA 34020	Add C, S, X; Remove F	02/13/2023	B-C-C1-C2-F1-F3-J-L-M-N-R-R1-S-T-V-X-Z1
DPO AA 34021	Add C, S, X; Remove F	02/13/2023	B-C-C1-C2-F1-F3-J-L-M-N-R-R1-S-T-V-X-Z1
DPO AA 34022	Add C, S, X; Remove F	02/13/2023	B-C-C1-C2-F1-F3-J-L-M-N-R-R1-S-T-V-X-Z1
DPO AA 34023	Add C, S, X; Remove F	02/13/2023	B-C-C1-C2-F1-F3-J-L-M-N-R-R1-S-T-V-X-Z1
DPO AA 34024	Add C, S, X; Remove F	02/13/2023	B-C-C1-C2-F1-F3-J-L-M-N-R-R1-S-T-V-X-Z1
DPO AA 34030	Add C, S, X; Remove F	02/13/2023	B-C-C1-C2-F1-F3-J-L-M-N-R-R1-S-T-V-X-Z1
DPO AA 34031	Add C, S, X; Remove F	02/13/2023	B-C-C1-C2-F1-F3-J-L-M-N-R-R1-S-T-V-X-Z1
DPO AA 34032	Add C, S, X; Remove F	02/13/2023	B-C-C1-C2-F1-F3-J-L-M-N-R-R1-S-T-V-X-Z1
DPO AA 34033	Add C, S, X; Remove F	02/13/2023	B-C-C1-C2-F1-F3-I3-L-M-N-R-S-T-V-X-Z1
DPO AA 34034	Add C, S, X; Remove F	02/13/2023	B-C-C1-C2-F1-F3-I3-L-M-N-R-R1-S-T-V-X-Z1
DPO AA 34035	Add C, S, X; Remove F	02/13/2023	B-C-C1-C2-F1-F3-H-J-L-M-N-R-R1-S-T-V-X-Z1
DPO AA 34036	Add C, S, X; Remove F	02/13/2023	B-C-C1-C2-F1-F3-J-L-M-N-R-R1-S-T-V-X-Z1

APO/FPO/DPO	Action	Effective Date	See Restrictions
DPO AA 34037	Add S, X; Remove F	02/13/2023	B-C-C1-C2-F1-F3-H-J-L-M-N-R-R1-S-T-V-X-Z1
DPO AA 34039	Add C, F3, R, R1, S, X; Remove F	02/13/2023	B-C-C1-C2-F1-F3-J-L-M-N-R-R1-S-T-V-X-Z1
DPO AA 34041	Add C, S, X; Remove F	02/13/2023	B-C-C1-C2-F1-F3-J-L-M-N-R-R1-S-T-V-X-Z1
DPO AA 34055	Add C, S, X; Remove F	02/13/2023	B-C-C1-C2-F1-F3-J-L-M-N-R-R1-S-T-V-X-Z1
DPO AA 34060	Add C, S, X; Remove F	02/13/2023	B-C-C1-C2-E2-F1-F3-J-L-M-N-R-R1-S-T-V-X-Z1
DPO AA 34066	Add C; Remove F, Z	02/13/2023	B-C-C1-C2-F1-F3-I3-J-L-M-N-R-R1-S-T-V-X-Z1
DPO AA 34067	Add C; Remove F	02/13/2023	B-C-C1-C2-F1-F3-J-L-M-N-R-R1-S-T-V-X-Z1
DPO AA 34068	Add C; Remove F	02/13/2023	B-C-C1-C2-F1-F3-J-L-M-N-R-R1-S-T-V-X-Z1
DPO AA 34069	Add C; Remove F	02/13/2023	B-C-C1-C2-F1-F3-I3-J-L-M-N-R-R1-S-T-V-X-Z1
DPO AP 96209	Add C, F3, R, S, X; Remove F	02/13/2023	A-B-C-C1-C2-F1-F3-J-L-M-N-R-S-T-U-V-X-Z1
DPO AP 96210	Add C, S, X; Remove F	02/13/2023	A-B-C-C1-C2-F1-F3-I3-L-M-N-R-R1-S-T-V-X-Z1
DPO AP 96303	Add C, F3, R, S, X; Remove F	02/13/2023	B-C-C1-C2-F1-F3-H-J-L-M-N-R-S-T-V-W-X-Z1
DPO AP 96504	Add S, X; Remove F	02/13/2023	A-B-C-C1-C2-F1-F3-I3-L-M-N-R-R1-S-T-V-W-X-Z1
DPO AP 96505	Add X; Remove F	02/13/2023	A-B-C-C1-C2-F1-F3-I3-L-M-N-R-R1-S-T-V-W-X-Z1
DPO AP 96507	Add C, F3, R, S, X; Remove F	02/13/2023	A-B-C-C1-C2-F1-F3-H-J-L-M-N-R-S-T-V-X-Z1
DPO AP 96521	Add C, F3, X	02/13/2023	B-C-C1-C2-F1-F3-J-L-M-N-R-R1-S-T-V-X-Z1
DPO AP 96530	Add C, F3, X; Remove F	02/13/2023	A-B-C-C1-C2-F1-F3-H-H1-J-L-M-N-R-R1-S-T-V-X-Z1
DPO AP 96532	Add C, F3, X; Remove F	02/13/2023	A-B-C-C1-C2-F1-F3-H-J-L-M-N-R-R1-S-T-V-X-Z1
DPO AP 96535	Add C, F3, X; Remove F	02/13/2023	A-B-C-C1-C2-F1-F3-J-L-M-N-R-R1-S-T-V-X-Z1
DPO AP 96549	Add C, F3, X; Remove F	02/13/2023	A-B-C-C1-C2-F1-F3-H-J-L-M-N-R-R1-S-T-V-X-Z1
DPO AP 96551	Add C, F3, X; Remove F	02/13/2023	A-B-C-C1-C2-F1-F3-H-J-L-M-N-R-R1-S-T-V-X-Z1
DPO AP 96554	Add C, F3, X; Remove F	02/13/2023	A-B-C-C1-C2-F1-F3-H-J-L-M-N-R-R1-S-T-V-X-Z1
DPO AP 96562	Add C, F3, X; Remove F	02/13/2023	A-B-C-C1-C2-D-E2-E3-F1-F3-H-H1-I3-L-M-N-R-R1-S-T-V-X-Z1

We have eliminated “Not Active” entries from the table below to save space and paper.

**APO/FPO/DPO Table**

APO/FPO/DPO	See Restrictions	APO/FPO/DPO	See Restrictions	APO/FPO/DPO	See Restrictions	APO/FPO/DPO	See Restrictions
09002	A-B-C-C2-F-F3-H-N-R-S-V-Z1	09020	B-C-C2-D-E-F-F3-H-M-R-S-U	<b>09103</b>	<b>A-B-C-C2-F-F3-H-N-R-S-V-Z1</b>	09142	B-C-C2-D-E-F-F3-H-M-R-S-U
09003	B-C-C2-D-E-F-F3-H-M-P-R-S-U	09021	B-C-C2-D-E-F-F3-H-M-R-S-U-Z1	09104	B-C-C2-D-F3-H-M-R-S-U-Z1	09154	B-C-C2-D-E-F-F3-H-M-R-S-U
09004	B-C-C2-D-E-F-F3-H-M-R-S-U	09034	B-C-C2-D-E-F-F3-H-M-R-S-U	09107	B-C-C2-D-E-F-F3-H-M-R-S-U	<b>09160</b>	<b>B-C-C2-F1-F3-H-J-L-M-N-R-R1-S-T-U-V-X-Z1</b>
09005	B-C-C2-D-E-F-F3-H-M-P-R-S	09044	B-C-C2-D-F-F3-H-R-S-U	09112	B-C-C2-D-E-F-F3-H-M-R-S-U	<b>09170</b>	<b>A-B-C-C2-F1-F3-J-L-M-N-R-R1-S-T-V-X-Z1</b>
09006	B-C-C2-D-E-F-F3-H-M-R-S-U	09046	B-C-C2-D-E-F-F3-H-M-R-S-U	09114	B-C-C2-D-E-F-F3-H-M-R-S-U	<b>09171</b>	<b>A-B-C-C1-C2-E3-F1-F3-J-L-M-N-R-R1-S-T-V-X-Z1</b>
<b>09008</b>	<b>A-B-C-C2-F-F3-H-N-R-S-V-Z1</b>	09049	B-C-C2-D-E-F-F3-H-M-R-S-U	09115	A-B-C2-F-F3-H-N-R-S-V-Z1	09172	B-C-C2-D-E-F-F3-H-M-R-S-U
09009	B-C-C2-D-E-F-F3-H-M-R-S-U-Z1	09053	B-C-C2-D-E-F-F3-H-M-R-S-U	09116	A-B-C2-F-F3-H-N-R-S-V-Z1	09173	B-C-C2-D-E-F-F3-H-M-R-S-U
09010	B-C-C2-D-E-F-F3-H-M-R-S-U2	09060	B-C-C2-D-E-F1-F3-H-M-N-R-S-U-Z1	09117	A-B-C-C2-F-F3-H-N-R-S-V-Z1	<b>09174</b>	<b>B-C-C2-F1-F3-L-N-R-R1-S-T-V-Z1</b>
09011	B-C-C2-D-E-F-F3-H-M-R-S	09067	B-C-C2-D-E-F-F3-H-M-R-S-U	09123	B-C-C2-D-E-F-F3-H-M-R-S-U-Z1	<b>09175</b>	<b>A-B-C-C1-C2-E2-F1-F3-H1-J-L-M-N-R-R1-S-T-V-W-X-Z1</b>
09012	B-C-C2-D-E-F-F3-H-M-R-S-U-Z1	09068	B-C-C2-D-E-F3-H-R-S-U-Z1	09126	B-C-C2-F3-H-M-P-R-S-Z1	<b>09176</b>	<b>A-B-C-C2-F1-F3-J-L-M-N-R-R1-S-T-V-X-Z1</b>
09013	B-C-C2-D-E-F-F1-F3-H-M-R-S-U-Z1	09069	A-B-C-C2-D-E-F3-H-N-R-S-U-V	09128	B-C-C2-D-E-F-F3-H-M-R-S-U	09177	B-C-C2-D-E-F-F3-H-M-R-S-U
09014	B-C-C2-D-E-F-F3-H-M-P-R-S-U	09079	B-C-C2-D-E-F-F3-H-M-R-S-U	09131	B-C-C2-D-E-F-F3-H-M-R-S-U	09178	B-C1-C2-E2-F1-F3-I3-L-M-N-R-S-T-V-X-Z1
09015	A-B-C-C1-C2-F-F1-F3-J-L-M-N-R-R1-S-V-Z1	09094	B-C-C2-D-F3-H-M-P-R-S-Z1	09135	A-B-C2-F-F3-H-N-R-S-U-V-Z1	<b>09179</b>	<b>A-B-C-C1-C2-F1-F3-J-L-M-N-R-R1-S-T-V-X-Z1</b>
09016	B-C-C2-D-E-F1-F3-H-M-R-S-U	09095	B-C-C2-D-E-F-F3-H-M-R-S-U	09136	B-C-C2-D-E-F-F3-H-M-P-R-S-U	09180	B-C-C2-D-E-F-F3-H-M-R-S-U
<b>09017</b>	<b>A-B-C-C2-F-F3-H-N-R-S-V-Z1</b>	09096	B-C-C2-D-E-F-F3-H-M-R-S-U	09138	B-C-C2-D-F-F3-H-M-R-S-U		
<b>09018</b>	<b>A-B-C-C2-F-F3-H-N-R-S-V-Z1</b>	09101	A-B-C-C2-F-F3-H-N-Q-R-S-V-Z1	09140	B-C-C2-D-E-F-F3-H-M-R-S-U		

APO/ FPO/ DPO	See Restrictions	APO/ FPO/ DPO	See Restrictions	APO/ FPO/ DPO	See Restrictions	APO/ FPO/ DPO	See Restrictions
09186	B-C-C2-D-E-F-F3-H-M-P-R-S-U	09290	A-B-F1-F3-J-L-M-N-R-S-T-U2-V-X-Z1	09410	C-C2-F-F1-F3-N-R-S-U2	09516	B-C-C2-F-F1-F3-R-R1-S-V
<b>09203</b>	<b>A-B-C-C1-C2-F1-F3-I3-J-L-M-N-R-R1-S-T-V-X-Z-Z1</b>	09291	B-C-C1-C2-E2-F1-F3-H1-L-N-R-R1-S-T-V-X-Z1	09421	B-C-C1-C2-F3-M-R-S-U-Z1	09517	B-C-C2-F-F1-F3-R-R1-S-V
09204	B-C-F3-M-N-R-S-V-Z1	09292	A-B-C-C2-E-E2-E3-F1-F3-H-H1-J-L-M-N-R-R1-S-T-V-X-Z1	<b>09424</b>	<b>B-C-C2-F1-F3-M-N-R-S-U-Z1</b>	09520	B-F-F1-F3-R-R1-S-V
09205	A-B-C-C2-E2-F-F3-M-N-R-S-T-V-X	09293	A-B-C-C1-C2-E-E2-F1-F3-I3-L-M-N-R-S-T-V-X-Z-Z1	09447	B-C-C1-C2-F3-M-R-S-U-V-Z1	09522	B-F-F1-F3-R-S-V
09211	B-C-C2-D-E-F-F3-H-M-P-R-S-U	09294	B-C-C1-C2-E2-F1-F3-H1-L-N-R-R1-S-T-V-X-Z1	09454	B-C-C1-C2-F3-M-R-S-U-V-Z1	09523	B-C-C2-F-F1-F3-R-R1-S-V
<b>09213</b>	<b>B-C-C2-F1-F3-H-J-L-M-N-R-R1-S-T-U-V-X-Z1</b>	09295	B-C-C1-C2-E2-F1-F3-H1-J-L-M-N-R-R1-S-T-V-X-Z1	09456	B-C-C1-C2-F3-M-N-R-S-U-V-Z1	09524	B-C-C2-F-F1-F3-R-R1-S-V
09214	B-C-C2-D-E-F3-H-M-R-S-U-Z1	<b>09301</b>	<b>A-B-C-C1-C2-E2-F1-F3-H1-I3-L-M-N-R-R1-S-T-U4-V-X-Z-Z1</b>	09459	B-C-C1-C2-F3-M-R-S-U-Z1	09532	B-C-C2-F-F1-F3-R-R1-S-V
09216	B,C,F1,F3,M,N,R,S,V,Z1	09304	A-B-C-C1-C2-F-F1-F3-H-M-N-R-S-V-Z-Z1	09461	B-C-C1-C2-F3-M-P-R-S-U-Z1	09533	B-V
09227	B-C-C2-D-E-F-F3-H-M-R-S-U	09305	A-B-C1-E2-F-F1-F3-H1-I3-M-N-R-R1-S-T-V-Z-Z1	09463	B-C-C1-C2-F3-M-R-S-U-Z1	09534	B-F-F1-F3-R-R1-S-V
09240	A-B-C1-C2-F-F3-H-N-R-S-V	09306	A-B-C1-E2-F-F1-F3-H1-R-R1-S-U2-V-Z1	09464	B-C-C1-C2-F3-R-S-U-Z1	09541	A-B-C-F-F3-M-N-S-V-Z1
09241	A-B-C-C2-F3-N-R-S-U-Z1	09307	B-C-C2-F-F3-N-R-R1-S-Z1	<b>09467</b>	<b>B-C-C2-E-E1-F1-F3-J-L-M-N-R-S-T-V-W-X-Z1</b>	09542	A-B-C-F-F3-M-N-S-V-Z1
09242	A-B-C1-C2-F-F3-H-N-R-S-V	09309	A-B-C-C1-C2-E2-F-F1-F3-H1-M-N-R-R1-S-V-Z1	09468	B-C-C1-C2-F3-M-R-S-U-Z1	09543	A-B-C-F-F3-M-N-S-V-Z1
09250	B-C-C2-D-E-F-F3-H-M-R-S-U	<b>09310</b>	<b>A-B-C-C1-E2-F1-F3-H1-I3-L-M-N-R-R1-S-T-U4-V-Z</b>	09469	B-C-C1-C2-F3-R-S-U-Z1	09544	A-B-C-F-F3-M-N-S-V-Z1
09261	B-C-C2-D-E-F3-H-M-N-R-S-U-V-Z1	09311	A-B-C1-C2-E2-F-F1-F3-H1-I3-L-M-N-R-R1-S-T-U4-V-Z-Z1	09470	B-C-C1-C2-F3-M-R-S-U-Z1	09545	A-B-C-F-F3-M-N-S-V-Z1
09263	B-C-C2-D-E-F3-H-M-R-S-U	<b>09312</b>	<b>A-B-C-C1-E2-F1-F3-H1-I3-L-M-N-R-R1-S-T-U-U4-V-X-Z-Z1</b>	09477	A-B-C-C1-C2-E2-F1-F3-I3-L-M-N-R-R1-S-T-V-W-X-Z-Z1	09550	B-C-C2-F-F1-F3-R-R1-S-V
09264	B-C-C2-D-E-F-F3-H-M-R-S-U	09315	A-B-C1-E2-F-F3-N-R-R1-S-V-Z1	09487	A-B-C-C1-C2-E2-F1-F3-I3-L-M-N-R-R1-S-T-V-W-X-Z-Z1	09554	B-C-C2-F-F1-F3-R-R1-S-V
09265	B-C-D-F-F1-H-J-L-M-N-R-S-T-U-V-Z1	09316	A-B-C1-E2-F-F1-F3-H1-I3-M-N-R-R1-S-T-V-Z-Z1	<b>09488</b>	<b>A-B-C-C1-C2-E2-F1-F3-J-L-M-N-R-S-T-V-W-X-Z1</b>	09556	B-F-F1-R-R1-V
09266	A-B-C2-F3-S-U-R-V-Z1	09321	A-B-C1-C2-E2-F-F3-H1-M-N-R-R1-S-V-Z1	09489	A-B-C-C1-C2-E2-F1-F3-I3-L-M-N-R-R1-S-T-V-W-X-Z1	09564	B-C-C2-F-F1-F3-R-R1-S-V
09276	A-B-F-F3-I3-L-M-N-R-S-T-V-X-Z-Z1	09330	A-B-C1-C2-D-E-E2-F-F1-F3-H-H1-M-R-R1-S-V-Z1	09490	A-B-C1-C2-E2-F-F1-F3-H1-J-L-M-N-R-R1-S-T-V-X-Z1	09565	B-C-C2-F-F1-F3-R-R1-S-V
09277	A-B-E-E1-E2-F1-F3-I3-L-N-R-S-T-V-X-Z-Z1	09333	A-B-C-C1-C2-E2-F-F1-F3-H1-I3-M-N-R-R1-S-V1-Z-Z1	09491	A-B-C1-C2-E2-F1-F3-H1-J-L-M-N-R-R1-S-T-V-Z1	09566	B-C-C2-E2-E3-F-F1-F3-R-R1-S-V
09278	A-B-F-F3-I3-L-M-N-R-S-T-V-X-Z-Z1	09343	A-B-C1-C2-F-F3-M-N-R-R1-S-V-Z1	09494	B-C-C1-C2-F3-M-R-S-U-Z1	09567	B-C-C2-E2-E3-F-F1-F3-R-R1-S-V
09279	A-B-E-E1-F-F3-I3-L-M-N-R-S-T-V-X-Z-Z1	09348	A-B-C1-E2-F-F1-F3-H1-I3-M-N-R-R1-S-T-V-Z-Z1	<b>09498</b>	<b>B-C-C1-C2-F1-F3-J-L-M-N-R-R1-S-T-V-X-Z1</b>	09568	B-C-C2-F-F1-F3-R-R1-S-V
09280	A-B-C-C1-C2-E-E2-F1-F3-H-I3-L-M-N-R-S-T-V-W-X-Z-Z1	09357	A-B-C1-E2-F-F3-H1-M-R-V-Z1	09501	B-V	09569	B-C-C2-E2-E3-F-F1-F3-R-R1-S-V-Z1
<b>09281</b>	<b>A-B-C-C1-C2-E2-E3-F1-F3-H-H1-J-L-M-N-R-R1-S-T-V-X-Z1</b>	09365	A-B-C-C1-E2-F-F3-H1-M-N-R-V-Z1	09502	B-V	09570	B-C-C2-F-F1-F3-R-R1-S-V
<b>09282</b>	<b>A-B-C-C1-C2-E2-E3-F1-F3-H-H1-J-L-M-N-R-R1-S-T-V-X-Z1</b>	09366	A-B-C-C1-E2-F-F1-F3-H-H1-M-R-R1-S-V-Z1	09503	B-F-F1-R-R1-V	09573	B-C-C2-E2-E3-F-F1-F3-R-R1-S-V-Z1
<b>09283</b>	<b>A-B-C-C2-E-E1-F1-F3-L-M-N-R-S-T-V-X-Z1</b>	09401	B-C-C1-C2-F3-M-R-S-U-Z1	09504	B-V	09574	B-F-F1-R-R1-V
<b>09284</b>	<b>A-B-C-C2-F1-F3-I3-L-M-N-R-S-T-V-Z</b>	09403	B-C-C1-C2-F3-M-R-S-U-Z1	09505	B-V	09575	B-C-C2-F-F1-F3-R-R1-S-V
09285	A-B-C-E-E1-F1-F3-H-I3-L-M-N-R-S-T-V-X-Z-Z1			09506	B-V	09576	B-C-C2-F-F1-F3-R-R1-S-V
09287	B-C2-E1-F1-F3-J-L-N-R-S-T-V-X-Z1			09507	B-V	09577	B-C-C2-F-F1-F3-R-R1-S-V
09288	A-B-C-C1-C2-E2-F1-F3-H-H1-J-L-M-N-R-R1-S-T-V-X-Z1			09508	B-C-C2-F-F3-R-R1-S-V	09578	B-C-C2-F-F1-F3-R-R1-S-V
09289	B-E2-F1-F3-H1-J-L-M-N-R-R1-S-T-U2-V-X-Z1			09509	B-C-C2-F-F3-R-R1-S-V	09579	B-C-C2-F-F1-F3-R-R1-S-V
				09510	B-C-C2-F-F3-R-R1-S-V	09581	B-C-C2-F-F1-F3-R-R1-S-V
				09511	B-C-C2-F-F3-R-R1-S-V	09582	B-C-C2-F-F1-F3-R-R1-S-V
				09512	B-C-C2-F-F1-F3-R-R1-S-V	09583	B-C-C2-F-F1-F3-R-R1-S-V
				09513	B-C-C2-F-F1-F3-R-R1-S-V	09586	B-C-C2-F-F1-F3-R-R1-S-V
				09514	B-C-C2-F-F1-F3-R-R1-V		

APO/ FPO/ DPO	See Restrictions	APO/ FPO/ DPO	See Restrictions	APO/ FPO/ DPO	See Restrictions	APO/ FPO/ DPO	See Restrictions
09587	B-C-C2-F-F1-F3-R-R1-S-V	09643	B-C-C2-F3-M-R-S-U-V-Z1	09731	<b>A-B-C-C1-C2-F1-F3-J-L-M-N-R-R1-S-T-V-X-Z1</b>	09780	A-B-C2-F-F3-H-N-R-S-V
09588	B-C-C2-F-F1-F3-R-R1-S-V	09645	B-C-C1-E1-E2-F-F1-F3-M-R-S-U-X-Z1	09732	B-F-F3-N-S-V-Z-Z1	09801	A-B-C1-E2-F-F3-H1-M-N-R-R1-S-V-Z1
09589	B-F-F1-F3-R-S-V	09647	B-C2-F1-F3-M-N-R-S-U-Z1	09733	B-F-F3-N-R-S-V-Z	09802	<b>A-B-C-C2-D-F1-F3-H1-I3-L-M-N-R-R1-S-T-V-W-X-Z-Z1</b>
09590	B-C-C2-F-F1-F3-R-R1-S-V	09648	B-C2-F3-N-R-S-U-V-Z1	09734	<b>A-B-C-C1-C2-F1-F3-I3-J-L-M-N-R-R1-S-T-V-X-Z-Z1</b>	09803	A-B-C-C2-E-E2-E3-F1-F3-H-H1-J-M-N-R-R1-S-U-V-Z1
09591	B-C-C2-F-F1-F3-R-R1-S-V	09649	B-C2-F3-N-R-S-U-Z1	09735	B-F3-N-R-S-V-Z-Z1	09804	A-B-C-C2-F-F1-F3-M-N-R-S-V-Z1
09592	B-C-C2-F-F1-F3-R-R1-S-V	09701	<b>A-B-C-C1-C2-F1-F3-J-L-M-N-R-R1-S-T-V-X-Z1</b>	09736	<b>A-B-C-C1-C2-F1-F3-J-L-M-N-R-R1-S-T-V-X-Z1</b>	09805	B-C-C2-E2-E3-F-F1-F3-R-R1-S-Z1
09593	B-F-F1-F3-R-S-V	09702	B-C-C2-F-F1-M-R-R1-S-U	09737	<b>A-B-C-C1-C2-F1-F3-I3-J-L-M-N-R-R1-S-T-V-W-X-Y-Z-Z1</b>	09807	A-B-C1-C2-E2-F-F1-F3-H1-I3-M-N-R-R1-S-T-V-Z-Z1
09594	B-C-C1-C2-F-F1-F3-R-R1-S-V	09704	B-C-F-F1-F3-R-R1-S-U2-V	09738	<b>A-B-C-C1-C2-F1-F3-J-L-M-N-R-R1-S-T-V-X-Z1</b>	09808	<b>A-B-C-C1-C2-E2-F1-F3-H-H1-J-L-M-N-R-R1-S-T-V-X-Z1</b>
09595	B-C-C2-F-F1-F3-I3-J-R-R1-S-V-V1-Z1	09705	B-C-C1-C2-F1-F3-M-R-R1-S-U	09739	<b>A-B-C-C1-C2-F1-F3-J-L-M-N-R-R1-S-T-V-X-Z1</b>	09809	<b>B-C-C1-C2-E3-F1-F3-J-L-M-N-R-S-T-V-X-Z1</b>
09596	B-F-F1-R-R1-V	09706	B-C-C2-F3-M-N-R-S-U-V-Z1	09741	<b>A-B-C-C1-C2-E2-F1-F3-H1-J-L-M-N-R-R1-S-T-V-W-X-Y-Z1</b>	09810	A-B-C2-F-F1-F3-N-R-S-V-Z1
09599	B-F-F1-R-R1-V	09707	<b>B-C-C2-F1-F3-J-L-M-N-R-R1-S-T-V-X-Z1</b>	09742	<b>A-B-C-C1-C2-F1-F3-J-L-M-N-R-R1-S-T-V-X-Z1</b>	09811	A-B-C-C2-E-E2-E3-F1-F3-H-H1-J-M-N-R-R1-S-U-V-Z1
09600	B-C-C2-F-F1-F3-R-S-U-Z1	09708	B-C-C1-C2-F-F3-M-R-R1-S-U	09743	A-B-C-C2-F-F3-H-N-R-S-V-Z-Z1	09812	B-E2-E3-F-F1-I-J-L-N-R-T-U-V-Z-Z1
09602	B-C-C2-F-F1-F3-N-R-S-U-V	09709	<b>B-C-C1-C2-E2-F1-F3-H-H1-J-L-N-R-R1-S-T-V-X-Z1</b>	09744	<b>A-B-C-C1-C2-F1-F3-J-L-M-N-R-R1-S-T-V-X-Z1</b>	09813	<b>A-B-C-C1-C2-E2-E3-F1-F3-J-L-N-R-R1-S-T-V-X-Z1</b>
09603	B-C-C2-F-F1-F3-R-S-U-V-Z1	09710	B-C-C1-F-F1-J-L-M-N-R-R1-T-U-V-Z1	09745	A-B-C2-F-F1-F3-M-N-R-R1-S-V-Z1	09814	<b>B-C-C2-E2-E3-F1-F3-I3-J-L-M-N-R-R1-S-T-V-X-Z-Z1</b>
09604	B-C-C2-F-F1-F3-P-R-S-U-V-Z1	09711	A-B-C-C2-E2-F-F1-F3-M-N-R-S-T-V-X	09748	<b>A-B-C-C1-C2-F1-F3-J-L-M-N-R-R1-S-T-V-X-Z1</b>	09815	A-B-C-C2-E-E2-E3-F1-F3-H-H1-J-M-N-R-R1-S-U-V-Z1
09605	B-C-C2-D-F-F3-H-M-R-S-U-V	09712	A-B-C2-F-F3-H-R-S-U-V-Z1	09749	A-B-C2-F-F3-H-N-R-S-U-V-Z1	09816	<b>A-B-C-C1-C2-E2-E3-F1-F3-J-L-M-N-R-R1-S-T-V-X-Z1</b>
09606	B-C-C2-D-F-F3-H-M-R-S-U-V	09714	B-C-C1-C2-F-F3-M-R-R1-S-U	09751	B-C-C2-D-E-F-F3-H-M-R-S-U	09817	<b>A-B-C-C1-C2-E2-E3-F1-F3-H-H1-J-L-M-N-R-R1-S-T-V-X-Z1</b>
09608	B-C-F-F3-N-R-S-U-V-Z1	09715	B-F-F1-J-L-M-N-R-T-V-Z1	09752	B-C-C2-D-F-F3-H-R-S-U	09818	A-B-C-C2-F-F3-M-R-S-V-Z1
09609	B-C-C2-F-F3-N-R-S-U-V-Z1	09716	<b>B-C-C2-F1-F3-J-L-M-N-R-R1-S-T-V-X-Z1</b>	09753	A-B-C-C1-C2-D-E-F1-F3-H-M-N-R-S-V-W-Z1	09819	A-B-C-C1-C2-E2-F-F1-F3-H-H1-M-R-R1-S-V-Z1
09610	B-C-C2-F-F1-F3-M-R-S-U-V-Z1	09717	A-B-C-C2-F3-M-R-S-V-W-Z1	09754	A-B-C-C2-F-F3-H-N-R-S-V-Z-Z1	09820	<b>A-B-C-C2-F1-F3-H-H1-J-L-M-N-R-R1-S-T-V-X-Z1</b>
09613	B-C-C2-F-F3-N-R-S-U-V	09718	B-F-F1-J-L-M-N-R-T-U-V-Z1	09755	A-B-C-C1-C2-D-F-F1-F3-J-L-M-N-Q-R-R1-S-T-V-Z1	09821	A-B-C-C2-F-F3-N-R-S-V-Z1
09614	<b>A-B-C-C1-C2-E2-F1-F3-H1-J-L-M-N-R-R1-S-T-U-V-X-Z1</b>	09719	B-C-C2-D-F3-M-R-S-U-V-Z1	09756	<b>A-B-E3-F-F1-F3-J-L-N-Q-R-R1-S-T-V-Z1</b>	09822	A-B-C-C2-F-F3-M-R-S-V-Z1
09618	B-C-C2-F-F3-R-S-U-Z1	09720	B-C2-F3-M-R-S-U-V-Z1	09759	<b>A-B-C-C1-C2-E2-F1-F3-J-L-M-N-R-R1-S-T-V-X-Z1</b>	09823	<b>A-B-C-C1-C2-F1-F3-J-L-M-N-R-R1-S-T-V-X-Z1</b>
09620	B-C-C2-F-F3-R-S-U-V-Z1	09722	A-B-C-C2-F-F3-H-N-R-S-V-Z-Z1	09761	B-C2-F-F1-F3-M-R-R1-S-V-Z-Z1	09824	A-B-C-C2-F-F3-M-R-S-V-Z1
09621	B-C-F-F3-R-U-Z1	09723	<b>B-C-C2-F1-F3-J-L-M-N-R-R1-S-T-V-X-Z1</b>	09762	<b>A-B-C-C1-E3-F1-F3-J-L-M-N-R-R1-S-T-V-Y-Z1</b>	09825	<b>A-B-C-C1-C2-F1-F3-J-L-M-N-R-R1-S-T-V-X-Z1</b>
09622	B-C-C2-F-F3-R-S-U-Z1	09724	B-C-C1-C2-F-F3-M-R-R1-S-U	09769	<b>A-B-C-C1-C2-F1-F3-J-L-M-N-R-R1-S-T-V-X-Z1</b>	09826	<b>A-B-C-C1-C2-E1-E2-E3-F1-F3-J-L-M-N-R-R1-S-T-V-W-X-Z1</b>
09623	B-C-C2-F-F3-R-S-U-V-Z1	09725	A-B-C2-F-F3-H-N-Q-R-S-V-V1-Z-Z1	09777	<b>A-B-C-C1-C2-E1-F1-F3-J-L-M-N-R-R1-S-T-V-X-Z1</b>	09827	A-B-F-F1-J-L-M-N-R-T-V-Z1
09624	<b>B-C-C2-F1-F3-I3-L-M-N-R-R1-S-T-U-V-X-Z1</b>	09726	B-F-F1-J-L-M-N-R-T-U-V-Z1				
09625	B-C-C2-F-F3-N-R-S-U-Z1	09727	<b>A-B-C-C1-C2-F1-F3-J-L-M-N-R-R1-S-T-V-X-Z1</b>				
09627	B-C-C2-F-F3-R-S-U-V-Z1	09728	<b>A-B-C-C1-C2-F1-F3-J-L-M-N-R-R1-S-T-V-X-Z1</b>				
09630	B-C-C2-F-F3-R-S-U-V	09729	B-C-C2-F-F3-N-R-R1-S-U-V-Z1				
09633	B-C-C2-D-F-F3-M-R-S-U-U1-U2-U3-V-Z1	09730	<b>A-B-C-C1-C2-F1-F3-J-L-M-N-R-R1-S-T-V-X-Z1</b>				
09634	A-B-C2-F-F3-M-N-R-S-V						
09636	B-C-C2-F-F3-R-S-U-V-Z1						
09642	<b>B-C-C2-F1-F3-J-L-M-N-R-S-T-U-V-X</b>						

APO/ FPO/ DPO	See Restrictions	APO/ FPO/ DPO	See Restrictions	APO/ FPO/ DPO	See Restrictions	APO/ FPO/ DPO	See Restrictions
09828	A-B-C-C1-C2-F1-F3-I3-L-M-N-R-R1-S-T-V-X-Z-Z1	09870	A-B-C-C1-C2-E2-F1-F3-H1-I3-L-M-N-R-R1-S-T-U4-V-X-Z-Z1	34008	B-C-C1-C2-D-E1-F1-F3-H-H1-J-L-M-N-R-R1-S-T-V-X-Z	34068	B-C-C1-C2-F1-F3-J-L-M-N-R-R1-S-T-V-X-Z1
09829	B-C-N-R-V-Z1	09873	A-B-C-C1-C2-E2-F1-F3-H1-I3-L-M-N-R-R1-S-T-U4-V-X-Z-Z1	34009	B-C2-F-F1-F3-R-S-V	34069	B-C-C1-C2-F1-F3-I3-J-L-M-N-R-R1-S-T-V-X-Z-Z1
09830	B-C-F-F1-F3-J-L-M-N-R-R1-S-T-V-Z1	09874	A-B-C-C1-C2-E2-F1-F3-H1-I3-L-M-N-R-R1-S-T-U4-V-X-Z-Z1	34010	B-C2-F-F1-F3-R-S-V	34072	B-C-C2-F1-F3-J-L-M-N-R-S-T-V-X-Z1
09831	B-C-C1-C2-F1-F3-J-L-M-N-R-R1-S-T-V-X-Z1	09875	A-B-C1-C2-E2-F-F1-F3-H1-I3-L-M-N-R-R1-S-T-U4-V-Z-Z1	34011	B-C-C1-C2-E2-F1-F3-J-L-M-N-R-R1-S-T-V-X-Z1	34078	B-F1-F3-N-R-S-V-Z1
09832	A-B-C-C1-C2-E2-E3-F1-F3-H-H1-J-M-N-R-R1-S-V-Z1	09877	A-B-C-C2-E-E2-E3-F1-F3-H-H1-J-M-N-R-R1-S-U-V-Z1	34020	B-C-C1-C2-F1-F3-J-L-M-N-R-R1-S-T-V-X-Z1	34080	B-F-F1-R-R1-V
09834	B-C-C2-E2-E3-F-F1-F3-R-R1-S-U-Z1	09880	A-B-C1-C2-E2-F-F1-F3-H1-J-L-M-N-R-R1-S-T-U-V-Z1	34021	B-C-C1-C2-F1-F3-J-L-M-N-R-R1-S-T-V-X-Z1	34081	B-F-F1-R-R1-V
09836	A-B-C-C1-C2-F1-F3-J-L-M-N-R-R1-S-T-V-X-Z1	09888	A-B-C1-C2-E2-F-F1-F3-H1-J-L-M-N-R-R1-S-T-U-V-Z1	34022	B-C-C1-C2-F1-F3-J-L-M-N-R-R1-S-T-V-X-Z1	34082	B-F-F1-R-R1-V
09837	B-E2-E3-F1-F3-R-S-V-Z1	09892	A-B-C-C1-C2-E2-F1-F3-J-L-M-N-R-R1-S-T-V-X-Z1	34023	B-C-C1-C2-F1-F3-J-L-M-N-R-R1-S-T-V-X-Z1	34083	B-F-F1-R-R1-V
09838	B-C-C2-E2-E3-F-F1-F3-R-S-U-Z1	09895	A-B-C1-C2-E2-F-F1-F3-J-L-M-N-R-R1-S-T-V-W-Z1	34024	B-C-C1-C2-F1-F3-J-L-M-N-R-R1-S-T-V-X-Z1	34084	B-F-F1-R-R1-V
09842	A-B-C-C1-C2-E3-F1-F3-J-L-M-N-R-R1-S-T-V-X-Z1	09898	B-C-C1-C2-E2-F-F1-F2-H1-N-R-R1-S-U2-V-Z1	34025	B-F-F1-F3-J-L-M-N-R-R1-T-V-Z1	34085	B-C-C1-C2-E2-E3-F-F1-F3-H1-J-R-R1-S-T-V-V1
09844	A-B-C-C1-C2-F1-F3-J-L-M-N-R-R1-S-T-V-X-Z1	09902	A-B-C1-C2-E2-F-F3-H1-M-R-R1-S-V-Z1	34030	B-C-C1-C2-F1-F3-J-L-M-N-R-R1-S-T-V-X-Z1	34086	B-C-C1-C2-E2-E3-F-F1-F3-H1-J-R-R1-S-T-V-V1
09845	A-B-C-C1-C2-E3-F1-F3-J-L-M-N-R-R1-S-T-V-X-Z1	09903	B-C1-E2-F1-F3-S-V-Z1	34031	B-C-C1-C2-F1-F3-J-L-M-N-R-R1-S-T-V-X-Z1	34087	B-C-C2-E2-F-F1-F3-R-R1-S-V
09846	A-B-C-C1-C2-F1-F3-J-L-M-N-R-R1-S-T-V-X-Z1	09904	B-C1-E2-F1-F3-S-V-Z1	34032	B-C-C1-C2-F1-F3-J-L-M-N-R-R1-S-T-V-X-Z1	34088	B-C-C2-F-F1-F3-R-R1-S-V
09847	B-C-C2-F1-F3-J-L-M-N-R-R1-S-T-V-X-Z1	09908	A-B-C2-F-F1-F3-N-R-R1-S-V-Z1	34033	B-C-C1-C2-F1-F3-I3-L-M-N-R-S-T-V-X-Z-Z1	34089	B-C-C2-F-F1-F3-R-R1-S-V
09848	A-B-C2-F-F3-M-R-S-V-Z1	09909	A-B-C2-F-F1-F3-N-R-R1-S-V-V1-Z1	34034	B-C-C1-C2-F1-F3-I3-L-M-N-R-R1-S-T-V-X-Z-Z1	34090	B-C-C2-F-F1-F3-R-R1-S-V
09853	B-C1-C2-E2-F-F1-F3-H1-N-R-R1-S-U2-V-Z1	09974	B-F1-F3-J-L-M-N-R-S-T-U2-V-X-Z1	34035	B-C-C1-C2-F1-F3-H-J-L-M-N-R-R1-S-T-V-X-Z1	34091	B-C-C2-E2-E3-F-F1-F3-R-R1-S-V-Z1
09854	A-B-C-C1-C2-F1-F3-J-L-M-N-R-R1-S-T-V-X-Z1	09975	B-F1-F3-I3-L-M-N-R-S-T-U2-V-X-Z-Z1	34036	B-C-C1-C2-F1-F3-J-L-M-N-R-R1-S-T-V-X-Z1	34092	B-C-C2-F-F1-F3-R-R1-S-V-Z1
09855	A-B-C-C1-C2-E2-F-F1-F3-H1-M-R-R1-S-U2-V-Z1	09976	B-F1-F3-J-L-M-N-R-S-T-U2-V-X-Z1	34037	B-C-C1-C2-F1-F3-H-J-L-M-N-R-R1-S-T-V-X-Z1	34093	B-C-C2-F-F1-F3-R-R1-S-V
09857	A-B-C-C2-E2-F1-F3-I3-L-M-N-R-R1-S-T-V-X-Z-Z1	09977	B-F1-F3-J-L-M-N-R-S-T-U2-V-X-Z1	34039	B-C-C1-C2-F1-F3-J-L-M-N-R-R1-S-T-V-X-Z1	34094	B-F-F1-F3-R-R1-S-V
09858	A-B-C-C1-C2-E2-E3-F1-F3-H-H1-J-M-N-R-R1-S-U-V-Z1	09978	B-C-C2-D-E1-F-F1-F3-H-H1-M-N-R-R1-S-T-X-Z1	34041	B-C-C1-C2-F1-F3-J-L-M-N-R-R1-S-T-V-X-Z1	34095	B-F-F1-R-R1-V
09859	B-C-C1-C2-E2-E3-F-F1-F3-H1-R-R1-S-U-Z1	09980	B-C-C1-C2-F1-F3-J-L-M-N-R-R1-S-T-V-X-Z1	34042	A-B-C-F-F1-F3-M-N-R-S-U-V-W-Z1	96201	A-B-F-F1-F3-M-R-S-U
09860	A-B-C-C2-F1-F3-J-L-M-N-R-R1-S-T-V-X-Z1	09981	B-C-C1-C2-F1-F3-J-L-M-N-R-R1-S-T-V-X-Z1	34055	B-C-C1-C2-F1-F3-J-L-M-N-R-R1-S-T-V-X-Z1	96202	A-B-C2-F-F1-F3-M-R-S-U
09862	A-B-C-C2-F1-F3-I3-L-M-N-R-R1-S-T-V-X-Z-Z1	09982	B-C-C1-C2-F1-F3-J-L-M-N-R-R1-S-T-V-X-Z1	34058	B-C2-F-F1-F2-F3-R-R1-S-V-Z1	96203	A-B-F-F1-F3-M-R-S-U
09864	A-B-C-C1-C2-E2-F1-F3-L-M-N-R-R1-S-T-V-W-X-Z1	09983	B-C-C1-C2-F1-F3-J-L-M-N-R-R1-S-T-V-X-Z1	34060	B-C-C1-C2-E2-F1-F3-J-L-M-N-R-R1-S-T-V-X-Z1	96204	A-B-F-F1-F3-M-R-S-U
09867	A-B-C-C1-C2-E2-F1-F3-L-M-N-R-R1-S-T-V-W-X-Z1	09984	B-C-C1-C2-F1-F3-J-L-M-N-R-R1-S-T-V-X-Z1	34066	B-C-C1-C2-F1-F3-I3-J-L-M-N-R-R1-S-T-V-X-Z1	96205	A-B-C-C2-F-F1-F3-M-R-S-U
09869	A-B-C-C1-C2-E2-F1-F3-L-M-N-R-R1-S-T-V-W-X-Z1	34001	A-B-C-C1-C2-F1-F3-J-L-M-N-R-R1-S-T-V-X-Z1	34067	B-C-C1-C2-F1-F3-J-L-M-N-R-R1-S-T-V-X-Z1	96206	A-B-C-C2-F-F1-F3-M-R-S-U
		34002	B-C-C1-C2-F1-F3-J-L-M-N-R-R1-S-T-V-X-Z1			96207	A-B-F-F1-F3-M-R-S-U-V
		34004	B-C-C1-C2-F1-F3-J-L-M-N-R-R1-S-T-V-X-Z1			96208	A-B-F-F1-F3-M-R-S-U
		34007	B-F-F1-H-J-M-N-R-R1-V-Z1			96209	A-B-C-C1-C2-F1-F3-J-L-M-N-R-S-T-U-V-X-Z1

APO/ FPO/ DPO	See Restrictions	APO/ FPO/ DPO	See Restrictions	APO/ FPO/ DPO	See Restrictions	APO/ FPO/ DPO	See Restrictions
96260	A-B-F-F1-F3-M-R-S-U	96368	B-C-C2-F3-M-R-S-W	96548	A-B-C2-F-F1-F3-H-M-R-S-U	96645	B-V
96262	A-B-C2-F-F1-F3-R-S-U-V-Z1	96370	B-F-F1-F2-H-M-W-Z1			96649	B-C-C2-F-F1-F3-R-R1-S-V
96264	A-B-C-C2-F1-F3-R-S-U	96371	B-C-C2-F-F3-M-R-S-W	<b>96549</b>	<b>A-B-C-C1-C2-F1-F3-H-J-L-M-N-R-R1-S-T-V-X-Z1</b>	96650	B-F-F1-R-R1-V
96266	A-B-C-C2-F1-F3-R-S-U	96372	B-C-C2-F-F3-M-R-S-W	96550	A-B-H-M-N-U-V-Z1	96657	B-C-C2-F-F1-F3-R-R1-S-V
96269	A-B-C-C2-F1-F2-F3-R-S-U-Z1	96373	B-C-C2-F-F3-M-R-S-W	<b>96551</b>	<b>A-B-C-C1-C2-F1-F3-H-J-L-M-N-R-R1-S-T-V-X-Z1</b>	96660	B-C-C2-F-F1-F3-R-R1-S-V
96271	A-B-F-F3-M-P-R-S-U	96374	B-C-C2-F-F3-M-R-S-W	96552	B-Z1	96661	B-C-C2-F-F1-F3-R-R1-S-V
96273	A-B-C2-F-F1-F3-M-R-S-U	96375	B-C-C2-F-F3-M-R-S-W	96553	A-B-C-C2-F-F1-F3-H-M-N-R-S-U	96662	B-C-C2-F-F1-F3-R-R1-S-V
96275	A-B-F-F1-F3-M-R-S-U	96376	B-C-C2-F-F3-M-R-S-W	<b>96554</b>	<b>A-B-C-C1-C2-F1-F3-H-J-L-M-N-R-R1-S-T-V-X-Z1</b>	96663	B-C-C2-F-F1-F3-R-R1-S-V
96276	A-B-C-C2-F1-F3-R-S-U	96377	B-C-C2-F-F3-M-R-S-W	96555	A-B-F-F3-M-R-S-V	96664	B-C-C2-F-F1-F3-R-R1-S-V
96278	A-B-C-C2-F1-F3-R-S-U	96378	B-C-C2-F-F3-M-R-S-W	96557	A-B-F-F3-M-R-S-V	96665	B-C-C2-F-F1-F3-R-R1-S-V
96283	A-B-F-F1-F3-S-U	96379	B-C-C2-F-F3-M-R-S-W	<b>96562</b>	<b>A-B-C-C1-C2-D-E2-E3-F1-F3-H-H1-I3-L-M-N-R-R1-S-T-V-X-Z-Z1</b>	96666	B-C-C2-F-F1-F3-R-R1-S-V
96284	A-B-C2-F-F1-F3-M-R-S-U	96380	B-C-C2-F-F3-M-R-S-W	96577	A-B-C2-F-F3-H-M-N-R-S-U	96667	B-C-C2-F-F1-F3-R-R1-S-V
96297	A-B-F-F1-F3-R-S-U	96382	B-C-C2-F-F3-M-R-S-W	96578	B-C-C2-F1-F3-H-J-N-R-S	96668	B-C-C2-F-F1-F3-R-R1-S-V
96300	A-B-F3-M-R-S-V-Z1	96384	B-C-C2-F-F3-M-R-S-W	96595	B-F-F3-R-S-V-Z1	96669	B-C-C2-F-F1-F3-R-R1-S-V
96301	A-B-C-C2-F-F3-M-N-R-S-U2-W	96385	B-C-C2-F-F3-M-R-S-W	96598	B-C2-F3-I3-N-R-S-V-V1	96670	B-C-C2-F-F1-F3-R-R1-S-V
<b>96303</b>	<b>B-C-C1-C2-F1-F3-H-J-L-M-N-R-S-T-V-W-X-Z1</b>	96386	B-C-C2-F-F3-M-R-S-W	96599	B-C2-F3-N-R-S-V	96671	B-C-C2-F-F1-F3-R-R1-S-V
96306	B-F-F1-F2-F3-H-M-R-S-W-Z1	96387	B-C-C2-F-F3-M-R-S-W	96601	B-V	96672	B-C-C2-F-F1-F3-R-R1-S-V
96309	B-C-C2-F-F1-F3-M-N-R-S-V-W	96388	B-C-C2-F-F3-M-R-S-W	96602	B-V	96673	B-C-C2-F-F1-F3-R-R1-S-V
96310	B-C-C2-F-F3-M-R-S-W	96389	B-C-C2-F-F3-M-R-S-W	96603	B-V	96674	B-C-C2-F-F1-F3-R-R1-S-V
96311	B-C-C2-F-F3-M-R-S-W	96401	B-C-F-F3-N-R-S-V-V1-Z1	96604	B-V	96675	B-C-C2-F-F1-F3-R-R1-S-V
96315	B-C-C2-F-F3-M-R-S-W	96502	A-B-C-C1-C2-F-F1-F3-J-M-N-R-R1-S-T-U-V	96605	B-V	96677	B-C-C2-F-F1-F3-R-R1-S-V
96319	B-C-C2-F3-M-R-S-W	<b>96504</b>	<b>A-B-C-C1-C2-F1-F3-I3-L-M-N-R-R1-S-T-V-W-X-Z-Z1</b>	96606	B-C-C2-F-F3-M-R-S-V-W	96678	B-C-C2-F-F1-F3-R-R1-S-V
96321	B-F-F1-F2-F3-H-M-R-S-W-Z1	<b>96505</b>	<b>A-B-C-C1-C2-F1-F3-I3-L-M-N-R-R1-S-T-V-W-X-Z-Z1</b>	96607	B-V	96679	B-C-C2-F-F1-F3-R-R1-S-V
96322	B-F-F1-F2-F3-H-M-R-S-W-Z1	<b>96507</b>	<b>A-B-C-C1-C2-F1-F3-H-J-L-M-N-R-S-T-V-X-Z1</b>	96608	B-E2-F-H1-R1-U2-V-Z1	96681	B-V
96326	B-C-C2-F-F3-M-R-S-W	96510	B-I3-N-V	96609	B-E2-F-H1-R1-U2-V-Z1	96682	B-C-C2-F-F1-F3-R-R1-S-V
96328	B-C-C2-F3-M-R-S-W	96511	B-I3-N-V	96610	B-C-C2-F-F3-H1-R-R1-S-U2-V-Z1	96683	B-C-C2-F-F1-F3-R-R1-S-V
96331	A-B-C-C2-F-F1-F3-J-L-M-N-R-S-U2-W	96515	B-C-D-E1-F-F1-F3-H-H1-M-N-R-S-T-Z1	96611	B-C-C2-F-F3-H1-R-R1-S-U2-V-Z1	96686	B-C-C2-F-F1-F3-R-R1-S-V
96336	B-C-C2-F3-M-R-S-V-W	96516	B-C-C2-D-E1-E2-F-F1-F3-H-H1-M-N-R-S-T-Z1	96612	B-C-C2-F-F3-H1-R-R1-S-U2-V-Z1	96688	B-C-C2-F-F1-F3-R-R1-S-V
96337	B-C2-F-F1-F3-M-R-R1-S-W	96517	B-C-D-E1-E2-F-F1-F3-H-H1-M-N-R-T-U-V-Z1	96613	B-C-C2-F-F3-H1-R-R1-S-U2-V-Z1	96689	B-C-C2-F-F1-F3-R-R1-S-V
96338	A-B-C-C2-F-F3-M-R-S-U2-W	96520	B-F-N-U3-V	96615	B-F-F1-R-R1-V	96691	B-C-C2-F-F1-F3-R-R1-S-V
96339	A-B-C-C2-F-F3-M-N-R-S-U2-W	<b>96521</b>	<b>B-C-C1-C2-F-F1-F3-J-L-M-N-R-R1-S-T-V-X-Z1</b>	96616	B-C2-F-F1-F3-R-R1-S-V	96692	B-C-C2-F-F1-F3-R-R1-S-V
96343	A-B-F-F3-M-P-R-S-U2	<b>96530</b>	<b>A-B-C-C1-C2-F1-F3-H-H1-J-L-M-N-R-R1-S-T-V-X-Z1</b>	96619	B-C-C2-F1-F3-R-S-V	96693	B-C-C2-F-F1-F3-R-R1-S-V
96346	B-F-F1-F2-F3-H-M-R-S-W-Z1	96531	A-B-C-C2-F-F1-F3-H-M-N-R-S-U-V	96620	B-C-C2-F-F1-F3-R-R1-S-V	96694	B-C-C2-F-F1-F3-I3-J-R-R1-S-V-Z
96347	B-C2-F-F1-F2-F3-H-M-R-S-W-Z1	<b>96532</b>	<b>A-B-C-C1-C2-F1-F3-H-J-L-M-N-R-R1-S-T-V-X-Z1</b>	96628	B-C-C2-F-F1-F3-R-R1-S-V	96695	B-C-C2-F-F1-F3-R-R1-S-V
96349	B-C-C2-F-F1-F2-F3-H-M-R-S-Z1	96534	A-B-C-C2-F-F1-F2-F3-R-R1-S-U-V-Z1	96629	B-C-C2-F-F1-F3-R-R1-S-V	96696	B-F-F1-R-R1-V
96350	B-F-F1-F2-F3-H-M-R-S-W-Z1	<b>96535</b>	<b>A-B-C-C1-C2-F1-F3-J-L-M-N-R-R1-S-T-V-X-Z1</b>	96641	B-V	96698	B-C-C2-F-F1-F3-R-R1-S-V
96351	B-C-C2-F-F1-F2-F3-H-M-R-R1-S-T-Z1	96537	B-V-Z1	96642	B-V		
96362	B-C2-F-F1-F2-F3-H-M-R-S-W-Z1	96540	B-F1-F2-F3-S-V-Z1	96643	B-F-F1-F3-R-R1-S-V		
96365	B-C-C2-F3-M-R-S-W-V	96542	B-C-C2-F-F1-F2-F3-R-S	96644	B-V		
96367	B-C-C2-F3-L-M-R-S-W	96543	B-C-C2-F-F1-F2-F3-P-R-S				

## RESTRICTIONS

## LEGEND

PS Form 2976, *Customs — CN 22 (Old C 1) and Sender's Declaration* (green label)

PS Form 2976-A, *Customs Declaration and Dispatch Note*

PS Form 2976-B, *Priority Mail Express International Shipping Label and Customs Form*

ATF	= Bureau of Alcohol, Tobacco, Firearms, and Explosives
Box C	= Department of State (DOS) contractor personnel
Box R	= Retired military personnel
DPO	= Diplomatic Post Office
MPO	= Military Post Office
PACT	= Prevent All Cigarette Trafficking Act
PAL	= Parcel Airlift
PMEMS	= Priority Mail Express Military Service
PUB 52	= Publication 52, <i>Hazardous, Restricted, and Perishable Mail</i>
SAM	= Space Available Mail
USDA	= United States Department of Agriculture

**Note:** Mail order catalogs are prohibited as SAM or PAL mail.

**A.** Securities, currency, or precious metals, including in their raw, unmanufactured state, are prohibited. Official Mail shipments are exempt from this restriction.

**A1.** Reserved for future use.

**A2.** Reserved for future use.

**B.** Other than for PMEMS and the exceptions listed below, a customs declaration PS Form 2976 or PS Form 2976-A is required for all items weighing 16 ounces or more, and for all items (regardless of weight) containing potentially dutiable mail contents (e.g., merchandise or goods) addressed to or from this ZIP Code. Other than the exceptions listed below, all PMEMS mailpieces (regardless of mail contents or weight) addressed to or from this ZIP Code must bear a properly completed PS Form 2976-B. The surface area of the address side of the mailpiece must be large enough to contain the applicable customs declaration. The following exceptions apply to known mailers, who for this purpose are defined as follows:

- Business mailers who enter volume mailings through business mail entry units or other bulk mail acceptance locations, pay postage through advance deposit accounts, use permit imprints for postage payment, and submit completed postage statements at the time of entry that certify that the mailpieces contain no dangerous materials that are prohibited by postal regulations. Such business mailers are exempt from providing customs documentation on non-dutiable letters and printed matter.
- All federal, state, and local government agencies whose mailings are regarded as "Official Mail." Such agencies are exempt from providing customs documentation, except for any items addressed to an MPO or DPO to which restriction "B2" applies.

**B2.** All federal, state, and local government agencies must complete customs documentation when sending potentially dutiable mail addressed to or from this MPO or DPO.

**C.** Cigarettes and other tobacco products, including tobacco leaves, chewing and pipe tobacco, snuff, and cigars are prohibited, including those that are authorized in Publication 52 under PACT.

**C1.** Obscene and horror articles, images, prints, paintings, cards, films, videotapes, comic books, etc., are prohibited.

**C2.** E-cigarettes and related products (e.g., nicotine liquids, e-liquids, parts, or supplies) are prohibited.

**D.** Coffee is prohibited.

**E.** Medicines (prescription, over-the-counter, vitamins, and supplements) are prohibited when mailed to individuals for human or animal use. This prohibition does not apply when medicines are sent as Official Mail only between specifically designated agencies such as pharmaceutical distributors, hospitals, clinics, and pharmacies.

**E1.** Mailers are responsible to ensure that all medicines and vaccines conform to host nation laws.

**E2.** Any matter depicting nude or seminude persons, pornographic, or sexual items are prohibited. Non-authorized political materials are prohibited. Religious materials contrary to the Islamic faith are prohibited in bulk quantities, but individual items for the personal use of the addressee are permissible.

**E3.** Radio transceivers, cordless/cellular telephones, global positioning systems, scanners, base stations, and handheld transmitters are prohibited.

**F.** Firearms of any type are prohibited, except firearms mailed to or by official U.S. government agencies. This restriction does not apply to firearms mailed from this MPO ZIP Code, provided ATF and USPS regulations are met. Antique firearms do not require an ATF form.

**F1.** Weapons of any type are prohibited.

**F2.** Mailing firearms to or from this MPO ZIP Code is restricted to one shotgun and one single shot .22 caliber rifle per individual.

**F3.** Replica weapons and inert explosive devices (such as grenades) and weapons parts are prohibited.

**G.** Parcels of any class are prohibited.

**H.** Meats, including preserved meats, bones, skin, hair, feathers, horns or hoofs of hoofed animals, and wool samples whether hermetically sealed or not, are prohibited.

**H1.** Pork or pork by-products are prohibited.

**I.** Reserved for future use.

**I1.** Reserved for future use.

**I2.** Reserved for future use.

**I3.** Mail of all classes must fit in a mail sack. Mail may not exceed the following dimensions:

- Maximum length 27 inches.
- Maximum width 14 inches.
- Maximum height 14 inches.

**J.** Standard Post and Parcel Select parcels may not exceed 108 inches in length and girth combined.

**K.** Reserved for future use.

**L.** All Official Mail is prohibited.

**M.** Fruits, vegetables, live animals, and live plants are prohibited.

**N.** Registered Mail service is prohibited.

**O.** Reserved for future use.

**P.** Official Mail only.

**Q.** Mail may not exceed 66 pounds, and size is limited to 42 inches maximum length and 72 inches maximum length and girth combined.

**R.** All alcoholic beverages, including those mailable under Publication 52, Part 421, are prohibited.

**R1.** Materials used in the production of alcoholic beverages (i.e., distilling material, hops, malts, yeast, etc.) are prohibited.

**S.** Synthetic cannabinoids used to stimulate the central nervous system commonly known as "synthetic marijuana," "K2," or "Spice" are prohibited.

**T.** Mailings of household shipments and case lots of food to or from an MPO require military transportation office approval prior to mailing. Mailings to or from a DPO require pre-approval from the Diplomatic Pouch and Mail Director.

**U.** Mail addressed to Retirees (Box R) is limited to 16 ounces and up to a 90-day supply of TRICARE medications. This restriction does not apply to mail endorsed "Free Matter for the Blind or Handicapped."

**U1.** Mail is limited to First-Class Mail items, including audio and video media, weighing 13 ounces or less. This limitation does not apply to Official Mail.

**U2.** Retirees (Box R) are not authorized mail service.

**U3.** Reserved for future use.

**U4.** Mail addressed to Box C is limited to 2 lbs.

**V.** PMEMS is not available.

**V1.** Electronic Delivery status information for Extra Services is not available on *USPS.com*. Manual record of delivery may be available upon request.

**W.** Hermetically sealed packages of meat products bearing USDA certification, such as dried beef, salami, and sausage, may be mailed. 200 grams of tobacco per parcel are permitted duty free.

**X.** Cremated remains are prohibited.

**Y.** Mail is limited to First-Class Mail and Priority Mail items only. This restriction also applies to Official Mail.

**Z.** No outside pieces (OSPs).

**Z1.** The following restriction is applicable only to International Service Centers (ISC)/Exchange Offices. An Anti-Pilferage Seal (Item No O817E or O818A) is required on all pouches and sacks.



## Freely Associated States Restrictions

We list the mailing restrictions for Freely Associated States (FAS) in the Pull-Out section of the *Postal Bulletin*. All FAS Restrictions will be updated periodically.

### Freely Associated States

Mail addressed to freely associated states is subject to certain conditions or restrictions of mailing regarding content, preparation, and handling. The following FAS Restrictions table outlines these conditions as listed by each affected FAS ZIP Code™ through the use of footnoted mailing restrictions codes (see the [Restrictions](#) following the table). For more information on available extra services for FAS destinations, see *Mailing Standards of the United States Postal Service, Domestic Mail Manual (DMM®)*, part 503.

Acceptance clerks must use the table with the Retail System Software terminal to determine which FAS ZIP Codes are active and which conditions of mailing apply.

### FAS Restrictions Table

FAS Table	See Restrictions
96939	A, B
96940	A, B
96941	A, B
96942	A, B
96943	A, B
96944	A, B
96960	A, B
96970	A, B, D
Marshall Islands	C
Federated States of Micronesia	C

### RESTRICTIONS LEGEND

PS Form 2976, *Customs Declaration CN 22 – Sender's Declaration*

PS Form 2976-A, *Customs Declaration and Dispatch Note*

FAS = Freely Associated State

- A.** Bank currency (coin and paper) is prohibited.
- B.** Signature Confirmation, Signature Confirmation Restricted Delivery, Adult Signature Requested, Adult Signature Restricted Delivery, Certified Mail Adult Signature Required, and Certified Mail Adult Signature Restricted Delivery not available.
- C.** Collect on Delivery is prohibited.
- D.** Betel nut (Areca catechu) is prohibited.

— *Asia-Pacific Relations,  
Global Business, 3-9-23*

Stamp Announcement 23-16: U.S. Flag Stamp (continued)

Issue:	<i>U.S. Flag Stamp</i>
Item Number:	740700
Denomination & Type of Issue:	First-Class Mail Forever
Format:	Coil of 100 (1 design)
Series:	N/A
Issue Date & City:	April 10, 2023, Freedom, ME 04941
Art Director:	Antonio Alcalá, Alexandria, VA
Designer:	Antonio Alcalá, Alexandria, VA
Illustrator:	Hong Li
Modeler:	Joseph Sheeran
Manufacturing Process:	Offset, Microprint
Printer:	Ashton Potter (USA) Ltd. (APU)
Press Type:	Muller A76
Stamps per Coil:	100
Print Quantity:	1,350,000,000 stamps
Paper Type:	Nonphosphored Type III, Block Tagged
Adhesive Type:	Pressure-sensitive
Processed at:	Ashton Potter (USA) Ltd. (APU)
Colors:	Pantone 7687C, Pantone 3546C, Pantone Cool Gray 5C
Stamp Orientation:	Vertical
Image Area (w x h):	0.73 x 0.84 in / 18.542 x 21.336 mm
Stamp Size (w x h):	0.87 x 0.98 in / 22.098 x 24.892 mm
Plate Size:	744 stamps per revolution
Plate Number:	"P" followed by three (3) single digits
Coil Number Frequency:	Plate number every 31st stamp below stamp image

Issue:	<i>U.S. Flag Stamp</i>
Item Number:	751300
Denomination & Type of Issue:	First-Class Mail Forever
Format:	Coil of 3,000 (1 design)
Series:	N/A
Issue Date & City:	April 10, 2023, Freedom, ME 04941
Art Director:	Antonio Alcalá, Alexandria, VA
Designer:	Antonio Alcalá, Alexandria, VA
Illustrator:	Hong Li
Modeler:	Sandra Lane / Michelle Finn
Manufacturing Process:	Offset, Microprint
Printer:	Banknote Corporation of America
Press Type:	Alprinta 74
Stamps per Coil:	3,000
Print Quantity:	15,000,000 stamps
Paper Type:	Phosphor Tagged, Overall
Adhesive Type:	Pressure-sensitive
Processed at:	Banknote Corporation of America
Colors:	Pantone 3546C, Pantone Cool Gray 5C, Pantone 7687C
Stamp Orientation:	Vertical
Image Area (w x h):	0.73 x 0.84 in / 18.542 x 21.336 mm
Stamp Size (w x h):	0.87 x 0.98 in / 22.098 x 24.892 mm
Plate Size:	540 stamps per revolution
Plate Number:	"B" followed by three (3) single digits
Coil Number Frequency:	Plate number every 27th stamp below stamp image

Issue:	<i>U.S. Flag Stamp</i>
Item Number:	740700
Denomination & Type of Issue:	First-Class Mail Forever
Format:	Coil of 100 (1 design)
Series:	N/A
Issue Date & City:	April 10, 2023, Freedom, ME 04941
Art Director:	Antonio Alcalá, Alexandria, VA
Designer:	Antonio Alcalá, Alexandria, VA
Illustrator:	Hong Li
Modeler:	Sandra Lane / Michelle Finn
Manufacturing Process:	Offset, Microprint
Printer:	Banknote Corporation of America
Press Type:	Alprinta 74
Stamps per Coil:	100
Print Quantity:	1,350,000,000 stamps
Paper Type:	Phosphor Tagged, Overall
Adhesive Type:	Pressure-sensitive
Processed at:	Banknote Corporation of America
Colors:	Pantone 3546C, Pantone Cool Gray 5C, Pantone 7687C
Stamp Orientation:	Vertical
Image Area (w x h):	0.73 x 0.84 in / 18.542 x 21.336 mm
Stamp Size (w x h):	0.87 x 0.98 in / 22.098 x 24.892 mm
Plate Size:	744 stamps per revolution
Plate Number:	"B" followed by three (3) single digits
Coil Number Frequency:	Plate number every 31st stamp below stamp image

Issue:	<i>U.S. Flag Stamp</i>
Item Number:	761400
Denomination & Type of Issue:	First-Class Mail Forever
Format:	Coil of 10,000 (1 design)
Series:	N/A
Issue Date & City:	April 10, 2023, Freedom, ME 04941
Art Director:	Antonio Alcalá, Alexandria, VA
Designer:	Antonio Alcalá, Alexandria, VA
Illustrator:	Hong Li
Modeler:	Sandra Lane / Michelle Finn
Manufacturing Process:	Offset, Microprint
Printer:	Banknote Corporation of America
Press Type:	Alprinta 74
Stamps per Coil:	10,000
Print Quantity:	125,000,000 stamps
Paper Type:	Phosphor Tagged, Overall
Adhesive Type:	Pressure-sensitive
Processed at:	Banknote Corporation of America
Colors:	Pantone 3546C, Pantone Cool Gray 5C, Pantone 7687C
Stamp Orientation:	Vertical
Image Area (w x h):	0.73 x 0.84 in / 18.542 x 21.336 mm
Stamp Size (w x h):	0.87 x 0.98 in / 22.098 x 24.892 mm
Plate Size:	540 stamps per revolution
Plate Number:	"B" followed by three (3) single digits
Coil Number Frequency:	Plate number every 27th stamp below stamp image

## Update: Stamp Announcement 23-2: School Bus Stamp

In the article titled “Stamp Announcement 23-2: School Bus Stamp” in *Postal Bulletin* 22612, (12-1-22, page 29), the Image Size (w x h) in the technical details table was listed incorrectly for the coil of 100 stamps.

The correct Image Size (w x h) for the *School Bus* coil of 100 stamps is shown here:

Image Size (w x h):	0.84 x 0.73 in / 21.336 x 18.542 mm
---------------------	-------------------------------------

— Stamp Services,  
Marketing, 3-9-23

## Pictorial Postmarks Announcement

As a community service, the Postal Service™ offers pictorial postmarks to commemorate local events celebrated in communities throughout the nation. A list of events for which pictorial postmarks are authorized appears on the following pages. The sponsor of the pictorial postmark appears in italics under the date. Also provided are illustrations of these postmarks.

People attending these local events may obtain the postmark in person at the temporary Post Office™ station established there. Those who cannot attend the event but who wish to obtain the postmark may submit a mail order request. Pictorial postmarks are available only for the dates indicated, and *requests must be postmarked no later than 30 days following the requested pictorial postmark date.*

All requests must include a stamped envelope or postcard bearing at least the minimum First-Class Mail® postage. Items submitted for postmark may not include

postage issued after the date of the requested postmark. Such items will be returned unserved.

Customers wishing to obtain a postmark must affix stamps to any envelope or postcard of their choice, address the envelope or postcard to themselves or others, insert a card of postcard thickness in envelopes for sturdiness, and tuck in the flap. Place the envelope or postcard in a larger envelope and address it to: Pictorial Postmarks, followed by the Name of the Station, Address, City, State, ZIP+4® Code, as listed next to the postmark.

Customers can also send stamped envelopes and postcards without addresses for postmark, as long as they supply a larger envelope with adequate postage and their return address. After applying the pictorial postmark, the Postal Service returns the items (with or without addresses) under addressed protective cover.

The following pictorial postmark has been extended for 60 days:



March 8, 2023

*United States Postal Service*  
National Museum of American Diplomacy Station  
National Postal Museum Philatelic Clerk  
2 Massachusetts Avenue NE  
Washington, DC 20002-9997

The following pictorial postmarks have been extended for 30 days:



February 5, 2023

*Boy Scouts of America*  
Barefoot Mailman Station  
Postmaster  
2200 Northwest 72nd Avenue, #514  
Miami, FL 33152-9998



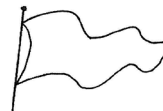
February 24, 2023

*United States Postal Service*  
Black History Month Station  
Postmaster  
501 Southwest 5th Street  
Lawton, OK 73501-9998

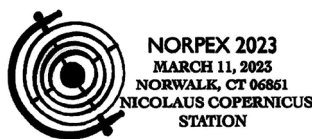


March 11, 2023  
City of Parkland, Florida  
60th Anniversary Station  
Postmaster  
1900 West Oakland Park  
Boulevard  
Fort Lauderdale, FL 33310-9998

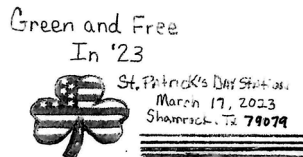
March 17, 2023  
Garfield-Perry Station  
Cleveland, OH 44136



March 17-19, 2023  
Garfield-Perry Stamp Club  
Garfield-Perry Station  
Postmaster  
2200 Orange Avenue, #206  
Cleveland, OH 44101-9998



March 11, 2023  
Norwalk Stamp Club  
Nicolaus Copernicus  
Station  
Postmaster  
16 Washington Street  
Norwalk, CT 06856-9998



March 17-20, 2023  
St. Patrick's Association -  
City of Shamrock  
St. Patrick's Station  
Postmaster  
210 North Madden Street  
Shamrock, TX 79079-9998



March 11, 18, & 25, 2023  
Thurman Community  
Association  
Thurman Maple Days  
Station  
Postmaster  
3930 Main Street  
Warrensburg, NY 12885-9998

— Stamp Services,  
Marketing, 3-9-23

## How to Order the First-Day-of-Issue Digital Color or Traditional Postmarks

Customers have 120 days to obtain the first-day-of-issue postmarks by mail. Each cover must have sufficient postage to meet First-Class Mail® requirements. Customers may purchase new stamps at their local Post Office™, by phone at 844-737-7826, or on The Postal Store® website at [usps.com/shop](https://usps.com/shop).

### Digital Color Postmarks

Only select stamp issues offer a digital color postmark. Customers may submit #6 or #10 envelopes constructed of paper rated as “laser safe.” The Postal Service™ recommends envelopes of 80-pound Accent Opaque, acid-free, 9/16-inch side seams with no glue on the flap. The maximum size of all digital color postmarks is 2 inches (vertically) by 4 inches (horizontally). Allow sufficient space on the envelope to accommodate the postmark. Do not use self-adhesive labels for addresses on the envelope. Two test envelopes must be included. There is a minimum of 10 envelopes at 50 cents per postmark required at the time of servicing. Customers must submit a check, money order, or credit card for payment.

The Postal Service reserves the right to not accept hand-painted and other cachet envelopes that are not compatible with our digital color postmark equipment. The Postal Service also reserves the right to substitute traditional black rubber postmarks if use of nonspecified envelopes results in poor image quality or damage to equipment.

Customers must affix the stamps to the envelopes and address them to themselves or others for return through the mail. Or, they may include an additional self-addressed return envelope, large enough to accommodate their canceled items, with sufficient postage affixed for return of

their postmarked items. Address customer requests for digital color postmarks to:

FDOI – (Name of Stamp Issue)  
USPS Stamp Fulfillment Services  
8300 NE Underground Drive, Suite 300  
Kansas City, MO 64144-9900

After applying the first-day-of-issue postmark, the Postal Service will return the envelopes to the customer by U.S. Mail®.

### Traditional Postmarks

Customers must affix the stamps to the envelopes and address them to themselves or others for return through the mail. Or, they may include an additional self-addressed return envelope, large enough to accommodate their canceled items, with sufficient postage affixed for return of their postmarked items. Address customer requests for traditional postmarks to:

FDOI – (Name of Stamp Issue)  
USPS Stamp Fulfillment Services  
8300 NE Underground Drive, Suite 300  
Kansas City, MO 64144-9900

After applying the first-day-of-issue postmark, the Postal Service will return the envelopes to the customer by U.S. Mail. There is no charge for the first 50 postmarks. There is a 5-cent charge for each additional postmark over 50. Customers must submit a check, money order, or credit card for payment.

Locally produced items are not authorized. Only merchandise that has been approved and assigned an item number by Headquarters Retail Marketing may be produced and sold.



FIRST DAY OF ISSUE

#### FDOI – Red Fox Stamp

USPS Stamp Fulfillment Services  
8300 NE Underground Drive, Suite 300  
Kansas City, MO 64144-9900

May 5, 2023

#### Black and White Pictorial



FIRST DAY OF ISSUE

#### FDOI – School Bus Stamp

USPS Stamp Fulfillment Services  
8300 NE Underground Drive, Suite 300  
Kansas City, MO 64144-9900

May 5, 2023

#### Black and White Pictorial



**FDI – Lunar New Year: Year of the Rabbit Stamp**

USPS Stamp Fulfillment Services  
8300 NE Underground Drive, Suite 300  
Kansas City, MO 64144-9900

May 12, 2023

**Digital Color Pictorial**



**FDI – Lunar New Year: Year of the Rabbit Stamp**

USPS Stamp Fulfillment Services  
8300 NE Underground Drive, Suite 300  
Kansas City, MO 64144-9900

May 12, 2023

**Black and White Pictorial**



**FDI – Love 2023 Stamps**

USPS Stamp Fulfillment Services  
8300 NE Underground Drive, Suite 300  
Kansas City, MO 64144-9900

May 19, 2023

**Digital Color Pictorial**



**FDI – Love 2023 Stamps**

USPS Stamp Fulfillment Services  
8300 NE Underground Drive, Suite 300  
Kansas City, MO 64144-9900

May 19, 2023

**Black and White Pictorial**

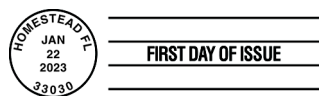


**FDI – Florida Everglades Stamp**

USPS Stamp Fulfillment Services  
8300 NE Underground Drive, Suite 300  
Kansas City, MO 64144-9900

May 22, 2023

**Digital Color Pictorial**



**FDI – Florida Everglades Stamp**

USPS Stamp Fulfillment Services  
8300 NE Underground Drive, Suite 300  
Kansas City, MO 64144-9900

May 22, 2023

**Black and White Pictorial**

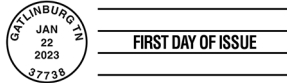


Digital Color Pictorial

**FDOI – Great Smoky Mountains Stamp**

USPS Stamp Fulfillment Services  
8300 NE Underground Drive, Suite 300  
Kansas City, MO 64144-9900

May 22, 2023



Black and White Pictorial

**FDOI – Great Smoky Mountains Stamp**

USPS Stamp Fulfillment Services  
8300 NE Underground Drive, Suite 300  
Kansas City, MO 64144-9900

May 22, 2023



Digital Color Pictorial

**FDOI – Ernest J. Gaines Stamp**

USPS Stamp Fulfillment Services  
8300 NE Underground Drive, Suite 300  
Kansas City, MO 64144-9900

May 23, 2023



Black and White Pictorial

**FDOI – Ernest J. Gaines Stamp**

USPS Stamp Fulfillment Services  
8300 NE Underground Drive, Suite 300  
Kansas City, MO 64144-9900

May 23, 2023



Digital Color Pictorial

**FDOI – Women's Soccer Stamp**

USPS Stamp Fulfillment Services  
8300 NE Underground Drive, Suite 300  
Kansas City, MO 64144-9900

June 16, 2023



Black and White Pictorial

**FDOI – Women's Soccer Stamp**

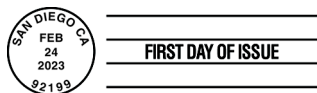
USPS Stamp Fulfillment Services  
8300 NE Underground Drive, Suite 300  
Kansas City, MO 64144-9900

June 16, 2023



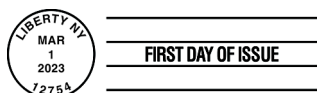
**FD0I – Floral Geometry Stamp**  
 USPS Stamp Fulfillment Services  
 8300 NE Underground Drive, Suite 300  
 Kansas City, MO 64144-9900  
 June 24, 2023

Digital Color Pictorial



**FD0I – Floral Geometry Stamp**  
 USPS Stamp Fulfillment Services  
 8300 NE Underground Drive, Suite 300  
 Kansas City, MO 64144-9900  
 June 24, 2023

Black and White Pictorial



**FD0I – Patriotic Block Stamp**  
 USPS Stamp Fulfillment Services  
 8300 NE Underground Drive, Suite 300  
 Kansas City, MO 64144-9900  
 July 1, 2023

Black and White Pictorial



**FD0I – Toni Morrison Stamp**  
 USPS Stamp Fulfillment Services  
 8300 NE Underground Drive, Suite 300  
 Kansas City, MO 64144-9900  
 July 7, 2023

Digital Color Pictorial



**FD0I – Toni Morrison Stamp**  
 USPS Stamp Fulfillment Services  
 8300 NE Underground Drive, Suite 300  
 Kansas City, MO 64144-9900  
 July 7, 2023

Black and White Pictorial



**FD0I – Railroad Stations Stamps**  
 USPS Stamp Fulfillment Services  
 8300 NE Underground Drive, Suite 300  
 Kansas City, MO 64144-9900  
 July 9, 2023

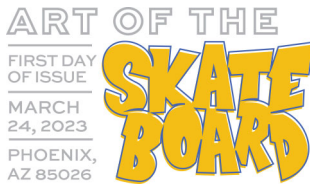
Digital Color Pictorial



**FD0I – Railroad Stations Stamps**  
 USPS Stamp Fulfillment Services  
 8300 NE Underground Drive, Suite 300  
 Kansas City, MO 64144-9900  
 July 9, 2023

Black and White Pictorial



**Digital Color Pictorial****FDOI – Art of the Skateboard Stamps**

USPS Stamp Fulfillment Services  
8300 NE Underground Drive, Suite 300  
Kansas City, MO 64144-9900

July 24, 2023

**Black and White Pictorial****FDOI – Art of the Skateboard Stamps**

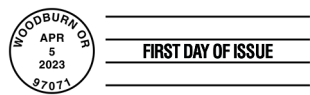
USPS Stamp Fulfillment Services  
8300 NE Underground Drive, Suite 300  
Kansas City, MO 64144-9900

July 24, 2023

**Digital Color Pictorial****FDOI – Tulip Blossoms Stamps**

USPS Stamp Fulfillment Services  
8300 NE Underground Drive, Suite 300  
Kansas City, MO 64144-9900

August 5, 2023

**Black and White Pictorial****FDOI – Tulip Blossoms Stamps**

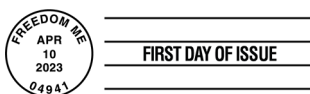
USPS Stamp Fulfillment Services  
8300 NE Underground Drive, Suite 300  
Kansas City, MO 64144-9900

August 5, 2023

**Digital Color Pictorial****FDOI – U.S. Flag Stamp**

USPS Stamp Fulfillment Services  
8300 NE Underground Drive, Suite 300  
Kansas City, MO 64144-9900

August 10, 2023

**Black and White Pictorial****FDOI – U.S. Flag Stamp**

USPS Stamp Fulfillment Services  
8300 NE Underground Drive, Suite 300  
Kansas City, MO 64144-9900

August 10, 2023

## Supply Management

### USPS Headquarters Managers and Field Installation Heads: March 2023 Annual Capital Property Review

The Annual Capital Property Review takes place March 6–31, 2023. If you are the Material Accountability Officer (MAO) or responsible for conducting the Annual Capital Property Review and you need training or guidance, please contact your supporting Asset Accountability Service Center at [blue.usps.gov/purchase/assetmgnt/am\\_aasc\\_home.htm](https://blue.usps.gov/purchase/assetmgnt/am_aasc_home.htm).

The MAO training course is also available on the HERO website (see course #2021SUPM4590SS01). This course provides basic instructions on how to track, transfer, and dispose of equipment, and offers guidance on completing the Annual Capital Property Review.

— *Asset Management Performance and Accountability, Supply Management, 3-9-23*



475 L'ENFANT PLAZA SW  
WASHINGTON DC 20260-5540

First-Class Mail  
Postage & Fees Paid  
USPS  
Permit No. G-10

Celebrate with  
***Lunar New Year • Year of the Rabbit***  
Forever® Stamps



ON SALE NATIONWIDE: JANUARY 12, 2023

