

Postal Bulletin

Published Since March 4, 1880

June 29, 2023
PB 22627



Winning Shipping Business with USPS Ground Advantage™

See page 3

Contents

COVER STORY

Winning Shipping Business with USPS Ground Advantage	3
--	---

POLICIES, PROCEDURES, AND FORMS UPDATES

Manuals

DMM Revision: Collapsing Zones — Bound Printed Matter	5
DMM Revision: Hazardous Materials Refund Eligibility	7
DMM Revision: Publication 199 Title Change	8
DMM Revision: Postage Stamp Denominations	10
DMM Revision: Sectional Center Facility Pallet Discount	11
IMM Revision: Individual Country Listing for Singapore	14

Publications

Correction: Publication 431 Revision: Changes to Post Office Box Service and Caller Service Fee Groups	15
--	----

ORGANIZATION INFORMATION

Environmental Management

Used Battery Disposal Requirements	16
--	----

Finance

Equipment Maintenance Allowance Schedule for Rural Routes	37
Maintain Updated Withholding Information in PostalEASE	40

Information Security

Always Back Up Your Data	40
--------------------------------	----

International Mail

Price Changes for International Mailing Services	41
--	----

Stamp Services

Stamp Announcement 23-25: Life Magnified Stamps	42
---	----

Stamp Announcement 23-26: Thinking of You Stamps	44
Pictorial Postmarks Announcement	46
How to Order the First-Day-of-Issue Digital Color or Traditional Postmarks	47

PULL-OUT INFORMATION

Fraud

Invalid USPS Corporate Account Numbers	17
Missing, Lost, or Stolen U.S. Money Order Forms	18
Missing, Lost, or Stolen Canadian Money Order Forms	25
Verifying U.S. Postal Service Money Orders	27
Counterfeit Canadian Money Order Forms	27
Toll-Free Number Available to Verify Canadian Money Orders	27

Other Information

Overseas Military/Diplomatic Mail	28
Thrift Savings Plan Fact Sheet	34
Freely Associated States Restrictions	36

POSTAL BULLETIN 2022 ANNUAL INDEX

2022 Annual Index	PB 22616 (1-26-23)
-------------------------	--------------------

Find the latest in mail and delivery information and services offered by U.S. Postal® in the *Postal Bulletin* at about.usps.com/postal-bulletin

Mail Moment®

Cover Story

Winning Shipping Business with USPS Ground Advantage

Launching on July 9, 2023, USPS Ground Advantage™ is the Postal Service's enhanced ground solution that will provide a simple, reliable, and more affordable ground shipping solution for packages with 2–5 day delivery within the continental U.S.

USPS Ground Advantage will combine current USPS Retail Ground®, First-Class Package Service®, and Parcel Select Ground® services, as well as returns options such as First-Class Package Return® service and Ground Returns, into a single, streamlined ground shipping service.

Key Features of USPS Ground Advantage

- Packages will be delivered in 2–5 business days.¹
- Affordable ounce and pound-based shipping options range from 1 ounce to 70 pounds.
- Items weighing up to 15.999 ounces will be priced in 4-ounce, 8-ounce, 12-ounce, and up to 15.999-ounce increments for both retail and commercial channels.
- Packages greater than 15.999 ounces will be charged by the pound, in 1-pound increments, up to 70 pounds.
- \$100 insurance will be included for both outbound and return shipments. Customers can purchase up to \$5,000 in additional coverage against loss or damage for merchandise.
- Free Package Pickup² service at home or in-office.
- A variety of postage payment options across various platforms, including the enhanced Click-N-Ship® with access to commercial rates for commercial customers. Additional postage payment options will include USPS Retail Post Offices, online postage, and more.
- Tracking included to check the status and confirm package delivery.
- Business customers can use USPS Ground Advantage return service as a convenient option for customers who need to send items back.
- A primary option for sending hazardous materials (HAZMAT) that are only mailable using ground transportation (see usps.com/ship/shipping-restrictions.htm#hazmat).

How Will the U.S. Postal Service Ensure the Success of USPS Ground Advantage and its Other Products?

USPS® is modernizing its core offerings in alignment with the *Delivering for America* plan (see about.usps.com/what/strategic-plans/delivering-for-america/assets/usps-dfa-two-year-report.pdf).

The enhancements made in this plan will enable tremendous growth opportunities and create new business realities, in which the Postal Service™ is investing heavily to ensure the plan's success. The Postal Service is leaning into four capability buckets that will positively transform the business and lay the groundwork for the organization to succeed:

- **Transportation capability.** Strategically repositioned the transportation network that improves surface routing and leads to less reliance on the Postal Service's air network. The Postal Service is maximizing its truck utilization while meeting service standards through logically sequenced routes.
- **Technology capability.** Investment in technology solutions that provide modernized customer platforms, and improvement of the Postal Service's digital network, which creates tangible value and a strong cybersecurity posture. These actions coupled with a technologically talented workforce have led to full-featured, one-stop shop solutions³. Businesses are now able to interface with USPS like never before, including harnessing the power of improved Click-N-Ship with access to commercial pricing. Also, customers will have access to simple integration across marketplaces using Application Program Interfaces in a frictionless onboarding experience³.
- **Processing capability.** Upgraded daily processing capacity to include 8.5 million square feet of space across 50 locations. The Postal Service has also increased its number of high-speed package sorters by more than 50 percent with the purchase and installation of 249 new machines in the last two years and 149 new package sorting machines in FY 2023 alone³. These machines, coupled with increased operating precision, boosted daily package processing capacity to 60 million, which is a capacity of more than 10 million higher than the package volume recorded in the agency's busiest day in the 2022 peak season³.

Further capability enhancements include six Sorting and Delivery Center openings, and a plan to acquire more than 106 thousand new vehicles by 2028³. Of these 106,000 vehicle acquisitions, at least 66,000 of them would encompass battery-electric delivery vehicles³. The Postal Service also has 11 Regional Processing and Distribution Centers in development, that together will result in a best-in-class processing and delivery operations network.

- **Workforce capability.** Transition USPS to an Employer of Choice through workforce capability improvements: converting 125 thousand pre-career workers to full-time career employees since October 2020; implementing a new organizational design; promoting employee retention through new front-line supervisor tools and resources; promoting workforce development; and cultivating a culture of engaged, collaborative leaders³.

How Will USPS Meet Evolving Customer Needs and Shipping Trends?

As a result of these endeavors, USPS is positioned to meet customer demand with USPS Ground Advantage by offering the right product, at the right price, with the right service. USPS Ground Advantage will, in turn, support customers' evolving needs for a low-priced, medium-speed ground shipping product. Data showed that customers demanded this type of product and will welcome the delivery of USPS Ground Advantage, which is good for businesses of all sizes. The Postal Service is committed to continually focusing on the development of flexible, solution-oriented products.

What is the Value of USPS and USPS Ground Advantage Relative to Other Carriers and their Ground Products?

While other carriers are adding fees and increasing shipping rates, USPS Ground Advantage's lower shipping rates reaffirms the Postal Service's commitment to support businesses of all sizes and across all industries with affordable, reliable, and simple mail and package delivery with the right service at the right price. The pricing for USPS Ground Advantage will be competitive in the shipping industry and will reflect a 1.4 percent pricing decrease relative to current USPS ground products. USPS Ground Advantage Retail prices will decrease 3.2 percent and USPS Ground Advantage Commercial published prices will decrease 0.7 percent.

USPS Ground Advantage is a perfect solution for shippers that need affordable domestic ground shipping to all 50 states and U.S. territories in 2–5 days¹. This option will benefit consumers as well as commercial customers as USPS Ground Advantage will be widely adopted across various postage channels.

USPS Ground Advantage was launched to provide solutions for customers of all sizes and across all industries. The integrated ground network, technology advances, upgraded process capacity, and workforce development will give USPS Ground Advantage the foundation to offer simple, reliable, and more affordable 2–5 day shipping to its customers, and at the same time, position USPS to grow its business and become the shipper of choice.

USPS: Delivering for America

The launch of USPS Ground Advantage is an integral element of the Postal Service's 10-year *Delivering for America* plan, a plan that collectively incorporates legislative action and one that relies on the Postal Service generating \$24 billion in additional revenue over the next 10 years. USPS Ground Advantage will favorably influence three key plan tenets:

- Bold approach to growth, innovation, and continued relevance.
- Service standard changes to improve reliability.
- Fully-optimized surface and air transportation network; with emphasis on the surface network to fill the trucks and add density between origin and destination pairs.

For the full 10-year *Delivering for America* plan, visit about.usps.com/what/strategic-plans/delivering-for-america.

— *Strategy and Development, Business Solutions, 6-29-23*

1. Expected delivery in 2–5 business days. Packages greater than 15.999 ounces going to certain places (including Alaska, Hawaii, and offshore destinations) will receive slower service. Packages containing hazardous materials or live animals may also receive slower service.

2. For details on free Package Pickup, visit tools.usps.com/schedule-pickup-steps.htm.

3. According to the *Delivering for America Plan* at about.usps.com/what/strategic-plans/delivering-for-america/assets/usps-dfa-two-year-report.pdf.

Policies, Procedures, and Forms Updates

Manuals

DMM Revision: Collapsing Zones — Bound Printed Matter

Effective November 6, 2023, the Postal Service™ will revise *Mailing Standards of the United States Postal Service*, Domestic Mail Manual (DMM®), in various sections, to implement Postal Service changes related to collapsed zones for Bound Printed Matter.

Although the Postal Service will not publish these revisions in the DMM until November 6, 2023, the standards are effective July 9, 2023.

Mailing Standards of the United States Postal Service, Domestic Mail Manual (DMM)

* * * * *
200 Commercial Mail Letters, Cards, Flats, and Parcels

* * * * *
260 Commercial Mail Bound Printed Matter

263 Prices and Eligibility
1.0 Prices and Fees

* * * * *
1.1 Nonpresorted Bound Printed Matter
* * * * *

1.1.1 Prices
[Revise the first sentence of 1.1.1 to read as follows:]
BPM prices are based on the weight of a single addressed piece or one pound, whichever is heavier.***

* * * * *
1.2 Presorted and Carrier Route Bound Printed Matter
* * * * *

1.2.7 Computing Postage for Permit Imprint
* * * * *

[Revise the first sentence of 1.2.7a(1) to read as follows:]
1. For pieces weighing 1 pound or less, compute the per pound price by multiplying the total number of addressed pieces by the 1-pound price for the price category.***

* * * * *

[Revise the first sentence of 1.2.7a(2) to read as follows:]

2. For pieces weighing more than 1 pound, compute the per pound price by multiplying the unrounded total weight of the addressed pieces by the pound price for the category.***

* * * * *

4.0 Price Eligibility for Bound Printed Matter

4.1 Price Eligibility

[Revise the introductory paragraph of 4.1 to read as follows:]

BPM prices are based on the weight of a single addressed piece or 1 pound, whichever is heavier. Price categories are as follows:***

* * * * *

264 Postage Payment and Documentation

1.0 Basic Standards for Postage Payment

1.1 Postage Payment Options

[Revise the text of 1.1 to read as follows:]

The mailer is responsible for proper postage payment. Subject to the corresponding standards, postage and fees for Bound Printed Matter must be paid by permit imprint, as defined in 604.5.0. Mailings may contain nonidentical-weight pieces only when authorized by the director, Business Acceptance Solutions (see 608.8.0 for address), unless mailed as specified in 2.2.

* * * * *

265 Mail Preparation

* * * * *

5.0 Preparing Presorted Flats

* * * * *

5.3 Sacking

* * * * *

[Delete sections 5.3.2 and 5.3.3 in their entirety and renumber current sections 5.3.4 and 5.3.5 as 5.3.2 and 5.3.3, respectively.]

* * * * *

6.0 Preparing Carrier Route Flats

* * * * *

6.3 Sacking

* * * * *

[Delete sections 6.3.2 and 6.3.3 in their entirety and renumber current sections 6.3.4 through 6.3.7 as 6.3.2 through 6.3.5, respectively.]

* * * * *

8.0 Preparing Presorted Parcels**8.1 Basic Standards**

[Delete the title of “8.1.1 General,” move the text of that section under “8.1 Basic Standards,” and delete sections 8.1.2 and 8.1.3 in their entirety.]

* * * * *

9.0 Preparing Carrier Route Parcels**9.1 Basic Standards**

* * * * *

[Delete sections 9.1.2 and 9.1.3 in their entirety and renumber current section 9.1.4 as 9.1.2.]

* * * * *

266 Enter and Deposit

* * * * *

2.0 Presenting a Mailing

* * * * *

[Delete sections 2.3 and 2.4 in their entirety and renumber current sections 2.5 and 2.6 as 2.3 and 2.4, respectively.]

2.3 NDC Acceptance

* * * * *

[Delete item b. of renumbered 2.3 and renumber current item c. as item b.]

* * * * *

3.0 Destination Entry

* * * * *

3.7 Verification**3.7.1 Mail Separation and Presentation**

[Delete item b. and renumber current items c. through f. as items b. through e.]

* * * * *

4.0 Destination Network Distribution Center (DNDC) Entry

* * * * *

4.3 Acceptance at Designated SCF — Mailer Benefit

[Delete item f. and renumber current item g. as item f.]

* * * * *

705 Advanced Preparation and Special Postage Payment Systems

* * * * *

9.0 Combining Bundles of Automation and Nonautomation Flats in Flat Trays

* * * * *

9.4 Bound Printed Matter**9.4.1 Basic Standards**

* * * * *

[Revise item e. to read as follows:]

- e. The prices for pieces in the Presorted price mailing qualifying for and claiming the barcode discount are applied based on meeting the sortation requirements in 265.7.0. The prices for pieces in the Presorted price mailing are based on meeting the sortation requirements in 265.5.0.

* * * * *

The Postal Service will incorporate these revisions into the November 6, 2023, edition of the online DMM, which is available via Postal Explorer[®] at pe.usps.com.

— Product Classification,
Product Solutions, 6-29-23

DMM Revision: Hazardous Materials Refund Eligibility

Effective July 9, 2023, the Postal Service™ will revise *Mailing Standards of the United States Postal Service, Domestic Mail Manual (DMM®)*, section 604.9.5.5, to reflect changes in refund eligibility for Priority Mail Express® products containing hazardous materials (HAZMAT).

The Postal Service published a *Federal Register* notice (88 FR 24483-24490) announcing that the Postal Service will amend the DMM regarding refund eligibility of Priority Mail Express products containing HAZMAT. Under the new provision published in the notice, postage will not be refunded if guaranteed service was not provided because a shipment containing live animals or hazardous materials was delivered, or delivery was attempted within 3 days of the date of mailing.

This standard is effective July 9, 2023.

Mailing Standards of the United States Postal Service, Domestic Mail Manual (DMM)

* * * * *

600 Basic Standards for All Mailing Services

* * * * *

604 Postage Payment Methods and Refunds

* * * * *

9.0 Exchanges and Refunds

* * * * *

9.5 Priority Mail Express Postage and Fees Refunds

* * * * *

9.5.5 Refunds Not Given

* * * * *

[Revise the text of item g. to read as follows:]

g. The shipment contained live animals or hazardous materials and was delivered, or delivery was attempted within 3 days of the date of mailing.

* * * * *

The Postal Service will incorporate this revision into the next edition of the online DMM, which is available via Postal Explorer® at pe.usps.com.

— Product Classification,
Product Solutions, 6-29-23

DMM Revision: Publication 199 Title Change

Effective November 6, 2023, the Postal Service™ will revise *Mailing Standards of the United States Postal Service*, Domestic Mail Manual (DMM®), in various sections, to reflect a change in the title of Publication 199, *Intelligent Mail Package Barcode (IMpb) Implementation Guide for: Confirmation Services and Electronic Verification System (eVS) Mailers*.

The title of Publication 199 has changed to *Intelligent Mail Package Barcode (IMpb) Implementation Guide for: Confirmation Services and Electronic Payment Systems*. Publication 199 is available on PostalPro at postalpro.usps.com.

Although the Postal Service will not publish these revisions in the DMM until November 6, 2023, the standards are effective immediately.

Mailing Standards of the United States Postal Service, Domestic Mail Manual (DMM)

	*	*	*	*	*
100	Retail Mail Letters, Cards, Flats, and Parcels				
	*	*	*	*	*
110	Retail Mail Priority Mail Express				
	*	*	*	*	*
115	Mail Prepayment				
	*	*	*	*	*
2.0	Priority Mail Express 1-Day and 2-Day				
2.1	Mailing Label				
	*	*	*	*	*

[Revise the parenthetical sentence at the end of item b. to read as follows:]

- b. *** (See Publication 199, *Intelligent Mail Package Barcode (IMpb) Implementation Guide for: Confirmation Services and Electronic Payment Systems*, available on PostalPro at postalpro.usps.com).

	*	*	*	*	*
200	Commercial Mail Letters, Cards, Flats, and Parcels				
	*	*	*	*	*
204	Barcode Standards				
	*	*	*	*	*

2.0 Standards for Package and Extra Service Barcodes

2.1 Intelligent Mail Package Barcode

* * * * *

2.1.3 Barcode Data Fields

[Revise the last sentence of the introductory text of 2.1.3 to read as follows:]

***Detailed specifications are provided in Publication 199, *Intelligent Mail Package Barcode (IMpb) Implementation Guide for: Confirmation Services and Electronic Payment Systems*, available on PostalPro at postalpro.usps.com.

* * * * *

2.1.8 Compliance Quality Thresholds

[Revise the last sentence of the text of 2.1.8 to read as follows:]

***For details, see Publication 199, *Intelligent Mail Package Barcode (IMpb) Implementation Guide for: Confirmation Services and Electronic Payment Systems*, available on PostalPro at postalpro.usps.com.

* * * * *

210 Commercial Mail Priority Mail Express

213 Prices and Eligibility

* * * * *

3.0 Basic Eligibility Standards for Priority Mail Express

* * * * *

3.2 IMpb Standards

[Revise the second sentence of the text of 3.2 to read as follows:]

Unless otherwise excepted, mailers of mailpieces not meeting the requirements for use of unique Intelligent Mail package barcodes or extra services barcodes, as outlined in section 204.2.1.8 and Publication 199, *Intelligent Mail Package Barcode (IMpb) Implementation Guide for: Confirmation Services and Electronic Payment Systems*, will be assessed an IMpb noncompliance fee.

* * * * *

215 Mail Preparation

* * * * *

2.0 Priority Mail Express 1-Day and 2-Day

2.1 Mailing Label

* * * * *

[Revise the parenthetical sentence at the end of item b. to read as follows:]

- b. *******(See Publication 199, *Intelligent Mail Package Barcode (IMpb) Implementation Guide for: Confirmation Services and Electronic Payment Systems*, available on PostalPro at postalpro.usps.com).

* * * * *

220 Commercial Mail Priority Mail

223 Prices and Eligibility

* * * * *

3.0 Basic Eligibility Standards for Priority Mail

* * * * *

3.2 IMpb Standards

[Revise the third sentence of the text of 3.2 to read as follows:]

Unless otherwise excepted, mailers of mailpieces not meeting the requirements for use of unique Intelligent Mail package barcodes or extra services barcodes, as outlined in section 204.2.1.8 and Publication 199, *Intelligent Mail Package Barcode (IMpb) Implementation Guide for: Confirmation Services and Electronic Payment Systems*, will be assessed an IMpb noncompliance fee.

* * * * *

250 Commercial Mail Parcel Select Parcels

253 Prices and Eligibility

* * * * *

3.0 Basic Eligibility Standards for Parcel Select Parcels

* * * * *

3.3 IMpb Smtandards

[Revise the second sentence of the text of 3.3 to read as follows:]

Unless otherwise excepted, mailers of mailpieces not meeting the requirements for use of unique Intelligent Mail package barcodes or extra services barcodes, as outlined in section 204.2.1.8 and Publication 199, *Intelligent Mail Package Barcode (IMpb) Implementation Guide for: Confirmation Services and Electronic Payment Systems*, will be assessed an IMpb noncompliance fee.

* * * * *

280 Commercial Mail First-Class Package Service – Commercial

283 Prices and Eligibility

* * * * *

3.0 Basic Eligibility Standards for First-Class Package Service – Commercial

* * * * *

3.4 IMpb Standards

[Revise the second sentence of the text of 3.4 to read as follows:]

Unless otherwise excepted, mailers of mailpieces not meeting the requirements for use of unique Intelligent Mail package barcodes or extra services barcodes, as outlined in section 204.2.1.8 and Publication 199, *Intelligent Mail Package Barcode (IMpb) Implementation Guide for: Confirmation Services and Electronic Payment Systems*, will be assessed an IMpb noncompliance fee.

* * * * *

The Postal Service will incorporate these revisions into the November 6, 2023, edition of the online DMM, which is available via Postal Explorer® at pe.usps.com.

– Product Classification, Product Solutions, 6-29-23

DMM Revision: Postage Stamp Denominations

Effective July 9, 2023, the Postal Service™ will revise *Mailing Standards of the United States Postal Service, Domestic Mail Manual (DMM®)*, section 604.1.1, to reflect an update in Postal Service postage stamp prices and denominations resulting from the Postal Regulatory Commission's recent approval of Market Dominant pricing adjustments. The standards are effective July 9, 2023.

Mailing Standards of the United States Postal Service, Domestic Mail Manual (DMM)

* * * * *

600 Basic Standards for All Mailing Services

* * * * *

604 Postage Payment Methods and Refunds

1.0 Stamps

1.1 Postage Stamp Denominations

* * * * *

[Revise the text of the table to read as follows:]

TYPE AND FORMAT		DENOMINATION
Regular Postage	Panes	\$0.01, .02, .03, .04, .05, .10, .40, \$1, \$2, \$5, \$9.65, \$10, and \$28.75
	Coils of 3,000 stamps	\$0.01, .02, .03, .04, .05, .10, and .40
	Coils of 10,000 stamps	\$0.01, .02, .03, .04, .05, .10, and .40
Precanceled Presorted Price Postage – First-Class Mail and USPS Marketing Mail	Coils of 3,000 and 10,000 stamps	Various nondenominated (available only to permit holders).
Semipostal	Breast Cancer Research, Save Vanishing Species, Alzheimer's, and Healing PTSD stamps	Postage value equivalent to FCM single-piece 1-ounce stamped letter price. Price also includes a contribution to the specific cause and a nominal amount of not less than 15 percent to offset costs incurred by the Postal Service in managing the Semipostal program.
Forever Stamp (Nondenominated)	Panes of up to 24 stamps	If labeled "Global Forever", the current FCMI 1-ounce stamped letter price.
	Booklets of 10 and 20 stamps	
	Coils of 100, 3,000, and 10,000 stamps	
	Panes of up to 20 stamps	The following nondenominated stamps will always be equal in value to the applicable price for the price category printed on them, at the time of use: <ul style="list-style-type: none"> ■ The current FCM additional-ounce price. ■ FCM non-machinable surcharge price. ■ FCM 2-ounce stamped letter price. ■ FCM 3-ounce stamped letter price. ■ FCM postcard price. Commemorative stamps are Forever stamps and equal to the current FCM single-piece 1-ounce stamped letter price. If labeled "Global Forever," the current FCMI 1-ounce stamped letter price applies.
	Coils of 100 stamps	The current FCM additional-ounce price and FCM postcard price.
Panes of up to 20 stamps	Commemorative stamps are Forever stamps and equal to the current FCM single-piece 1-ounce stamped letter price. If labeled "Global Forever", the current FCMI 1-ounce stamped letter price.	

* * * * *

The Postal Service will incorporate these revisions into the next edition of the online DMM, which is available via Postal Explorer® at pe.usps.com.

DMM Revision: Sectional Center Facility Pallet Discount

Effective November 6, 2023, the Postal Service™ will revise *Mailing Standards of the United States Postal Service*, Domestic Mail Manual (DMM®), in various sections, to reflect a change in standards for the Postal Service Sectional Center Facility (SCF) pallet discount for USPS Marketing Mail® letters, and to clarify changes that became effective January 22, 2023, related to the Postal Service SCF pallet discount for USPS Marketing Mail flats.

In the article titled, “New Mailing Standards for Domestic Mailing Services Products” in *Postal Bulletin 22614* (12-29-22, pages 5–6), the Postal Service published revised standards for claiming the SCF pallet discount for USPS Marketing Mail flats. Those revisions were incorporated into the January 22, 2023, DMM edition.

Although the Postal Service will not publish these revisions in the DMM until November 6, 2023, the standards are effective immediately for USPS Marketing Mail flats and on July 9, 2023, for USPS Marketing Mail letters.

Mailing Standards of the United States Postal Service, Domestic Mail Manual (DMM)

*	*	*	*	*
200	Commercial Mail Letters, Cards, Flats, and Parcels			
	*	*	*	*
240	Commercial Mail USPS Marketing Mail			
243	Prices and Eligibility			
	*	*	*	*
5.0	Additional Eligibility Standards for Nonautomation USPS Marketing Mail Letters, Flats, and Presorted USPS Marketing Mail Parcels			
	*	*	*	*
5.4	Machinable Price Application — Letters			
	<i>[Add new title “5.4.1 General” immediately above the introductory text and renumber current 5.4.1 as 5.4.2.]</i>			
	*	*	*	*
	<i>[Add new 5.4.3 to read as follows and renumber current 5.4.2 “Mixed AADC Price” as 5.4.4:]</i>			
5.4.3	AADC USPS Marketing Mail Letter-Shaped Pieces SCF Pallet Discount Eligibility			
	The SCF pallet discount applies to AADC-eligible USPS Marketing Mail letter-shaped pieces that are palletized under 705.8.10.3e and 705.8.10.3f and entered at Origin (None), DNDC, or DSCF entry.			
	*	*	*	*

5.5 Nonmachinable Price Application — Letters

[Revise the text of section 5.5 in its entirety to read as follows:]

5.5.1 General

Nonmachinable prices in 1.0 apply only to USPS Marketing Mail letter-size pieces (including card-size pieces) that meet the criteria in 201.2.1 for nonmachinable letters. Nonmachinable saturation or high-density letter-size pieces are subject to applicable saturation or high-density nonautomation letter prices.

5.5.2 5-Digit Price

The 5-digit price applies to letter-size pieces subject to nonmachinable prices in quantities of 150 or more pieces for a 5-digit ZIP Code prepared in 5-digit trays (and overflow pieces in 3-digit or ADC trays) under 245.5.0.

5.5.3 5-Digit USPS Marketing Mail Letter-Shaped Pieces SCF Pallet Discount Eligibility

The SCF pallet discount applies to 5-digit-eligible pieces that are palletized under 705.8.10.3a to 705.8.10.3f and entered at Origin (None), DNDC, or DSCF entry.

5.5.4 3-Digit Price

The 3-digit price applies to letter-size pieces subject to nonmachinable prices in quantities of 150 or more pieces for a 3-digit ZIP Code prepared in 3-digit trays (and overflow pieces in ADC or MADC trays) under 245.5.0.

5.5.5 3-Digit USPS Marketing Mail Letter-Shaped Pieces SCF Pallet Discount Eligibility

The SCF pallet discount applies to 3-digit-eligible USPS Marketing Mail letter-shaped pieces that are palletized under 705.8.10.3e and 705.8.10.3f and entered at Origin (None), DNDC, or DSCF entry.

5.5.6 ADC Price

The ADC price applies to letter-size pieces subject to nonmachinable prices in 3-digit origin/entry trays and to pieces in quantities of 150 or more for an ADC prepared in ADC trays (and overflow pieces in MADC trays) under 245.5.0.

5.5.7 ADC USPS Marketing Mail Letter-Shaped Pieces SCF Pallet Discount Eligibility

The SCF pallet discount applies to ADC-eligible USPS Marketing Mail letter-shaped pieces that are palletized under 705.8.10.3e and 705.8.10.3f and entered at Origin (None), DNDC, or DSCF entry.

5.5.8 Mixed ADC Price

The mixed ADC price applies to letter-size pieces that are subject to nonmachinable prices and prepared in mixed ADC trays.

5.6 Nonautomation Price Application — Flats

* * * * *

[Add new 5.6.2 to read as follows and renumber current 5.6.2 as 5.6.3:]

5.6.2 5-Digit USPS Marketing Mail Flat-Shaped Pieces SCF Pallet Discount Eligibility

The SCF pallet discount applies to 5-digit-eligible USPS Marketing Mail flat-shaped pieces that are palletized under 705.8.10.3d, 705.8.10.3e, and 705.8.10.3f and entered at Origin (None), DNDC, or DSCF entry.

* * * * *

[Add new 5.6.4 to read as follows and renumber current 5.6.3 as 5.6.5:]

5.6.4 3-Digit USPS Marketing Mail Flat-Shaped Pieces SCF Pallet Discount Eligibility

The SCF pallet discount applies to 3-digit-eligible USPS Marketing Mail flat-shaped pieces that are palletized under 705.8.10.3e and 705.8.10.3f and entered at Origin (None), DNDC, or DSCF entry.

* * * * *

[Add new 5.6.6 to read as follows and renumber current 5.6.4 as 5.6.7:]

5.6.6 ADC USPS Marketing Mail Flat-Shaped Pieces SCF Pallet Discount Eligibility

The SCF pallet discount applies to ADC-eligible USPS Marketing Mail flat-shaped pieces that are palletized under 705.8.10.3e and 705.8.10.3f and entered at Origin (None), DNDC, or DSCF entry.

* * * * *

6.0 Additional Eligibility Standards for Enhanced Carrier Route USPS Marketing Mail Letters and Flats

* * * * *

6.3 Basic Price Enhanced Carrier Route Standards

* * * * *

[Add new 6.3.3 to read as follows and renumber current 6.3.3 and 6.3.4 as 6.3.4 and 6.3.5:]

6.3.3 Basic Carrier Route USPS Marketing Mail Letter-Shaped Pieces SCF Pallet Discount Eligibility

The SCF pallet discount applies to Basic Carrier Route-eligible USPS Marketing Mail letter-shaped pieces that are palletized under 705.8.10.3a to 705.8.10.3f and entered at Origin (None), DNDC, or DSCF entry.

[Add new 6.3.6 to read as follows:]

6.3.6 Basic Carrier Route USPS Marketing Mail Flat-Shaped Pieces SCF Pallet Discount Eligibility

The SCF pallet discount applies to Basic Carrier Route-eligible USPS Marketing Mail flat-shaped pieces that are palletized under 705.8.10.3d, 705.8.10.3e, and 705.8.10.3f and entered at Origin (None), DNDC, or DSCF entry.

6.4 High Density and High Density Plus (Enhanced Carrier Route) Standards — Letters

* * * * *

[Add new 6.4.3 to read as follows:]

6.4.3 High Density and High Density Plus USPS Marketing Mail Letter-Shaped Pieces SCF Pallet Discount Eligibility

The SCF pallet discount applies to High Density- and High Density Plus-eligible USPS Marketing Mail letter-shaped pieces that are palletized under 705.8.10.3a to 705.8.10.3f and entered at Origin (None), DNDC, or DSCF entry.

6.5 High Density and High Density Plus (Enhanced Carrier Route) Standards — Flats

* * * * *

[Add new 6.5.5 and 6.5.6 to read as follows:]

6.5.5 High Density USPS Marketing Mail Flat-Shaped Pieces SCF Pallet Discount Eligibility

The SCF pallet discount applies to 125 or more High Density-eligible USPS Marketing Mail flat-shaped pieces that are palletized under 705.8.10.3d, 705.8.10.3e, and 705.8.10.3f and entered at Origin (None), DNDC, or DSCF entry.

6.5.6 High Density Plus USPS Marketing Mail Flat-Shaped Pieces SCF Pallet Discount Eligibility

The SCF pallet discount applies to 300 or more High Density Plus-eligible USPS Marketing Mail flat-shaped pieces that are palletized under 705.8.10.3d, 705.8.10.3e, and 705.8.10.3f and entered at Origin (None), DNDC, or DSCF entry.

6.6 Saturation ECR Standards — Letters

* * * * *

[Add new 6.6.3 to read as follows:]

6.6.3 Saturation USPS Marketing Mail Letter-Shaped Pieces SCF Pallet Discount Eligibility

The SCF pallet discount applies to at least 90 percent or more of the total number of active residential addresses, or 75 percent or more of the total number of active possible delivery addresses, on each carrier route that are palletized under 705.8.10.3a to 705.8.10.3f and entered at Origin (None), DNDC, or DSCF entry.

6.7 Saturation Enhanced Carrier Route Standards – Flats

* * * * *

[Add new 6.7.4 to read as follows:]

6.7.4 Saturation USPS Marketing Mail Flat-Shaped Pieces SCF Pallet Discount Eligibility

The SCF pallet discount applies to at least 90 percent or more of the total number of active residential addresses, or 75 percent or more of the total number of active possible delivery addresses, on each carrier route that are palletized under 705.8.10.3d, 705.8.10.3e, and 705.8.10.3f and entered at Origin (None), DNDC, or DSCF entry.

7.0 Eligibility Standards for Automation USPS Marketing Mail

* * * * *

7.3 Price Application for Automation Letters

[Add new title “7.3.1 General” immediately above the text of 7.3.]

* * * * *

[Add new 7.3.2 and 7.3.3 to read as follows:]

7.3.2 5-Digit USPS Marketing Mail Letter-Shaped Pieces SCF Pallet Discount Eligibility

The SCF pallet discount applies to 5-digit-eligible USPS Marketing Mail letter-shaped pieces that are palletized under 705.8.10.3a to 705.8.10.3f and entered at Origin (None), DNDC, or DSCF entry.

7.3.3 AADC USPS Marketing Mail Letter-Shaped Pieces SCF Pallet Discount Eligibility

The SCF pallet discount applies to AADC-eligible USPS Marketing Mail letter-shaped pieces that are palletized under 705.8.10.3e and 705.8.10.3f and entered at Origin (None), DNDC, or DSCF entry.

7.4 Price Application for Automation Flats

[Add new title “7.4.1 General” immediately above the text of 7.4.]

* * * * *

[Add new 7.4.2 through 7.4.4 to read as follows:]

7.4.2 5-Digit USPS Marketing Mail Flat-Shaped Pieces SCF Pallet Discount Eligibility

The SCF pallet discount applies to 5-digit-eligible USPS Marketing Mail flat-shaped pieces that are palletized under 705.8.10.3d, 705.8.10.3e, and 705.8.10.3f and entered at Origin (None), DNDC, or DSCF entry.

7.4.3 3-Digit USPS Marketing Mail Flat-Shaped Pieces SCF Pallet Discount Eligibility

The SCF pallet discount applies to 3-digit-eligible USPS Marketing Mail flat-shaped pieces that are palletized under 705.8.10.3e and 705.8.10.3f and entered at Origin (None), DNDC, or DSCF entry.

7.4.4 ADC USPS Marketing Mail Flat-Shaped Pieces SCF Pallet Discount Eligibility

The SCF pallet discount applies to ADC-eligible USPS Marketing Mail flat-shaped pieces that are palletized under 705.8.10.3e and 705.8.10.3f and entered at Origin (None), DNDC, or DSCF entry.

* * * * *

700 Special Standards

* * * * *

705 Advanced Preparation and Special Postage Payment Systems

* * * * *

8.0 Preparing Pallets

* * * * *

8.10 Pallet Presort and Labeling

* * * * *

8.10.3 USPS Marketing Mail or Parcel Select Lightweight – Bundles, Sacks, or Trays

* * * * *

[Revise the first sentence of the introductory text of item c. to read as follows]

c. 5-digit carrier routes, required except for trays, permitted for bundles, sacks, trays, and cartons.***

* * * * *

[Revise the first sentence of the introductory text of item e. to read as follows]

e. 3-digit, optional, option not available for parcels other than Product Sample parcels or for bundles for 3-digit ZIP Code prefixes marked “N” in L002.***

* * * * *

[Revise the introductory text of item f. to read as follows]

f. SCF, required, permitted for bundles, trays, and sacks (irregular parcels only). The pallet may contain carrier route, automation price, and/or Presorted price mail for the 3-digit ZIP Code groups in L005, or

L051 for Parcel Select Lightweight sacks. Mailers may, at their option, place AADC trays on SCF pallets when the tray's "label to" 3-digit ZIP Code (from L801) is within that SCF's service area. Mailers may also, at their option, place mixed ADC or mixed AADC trays, labeled per L010, on an SCF pallet entered at the SCF facility responsible for processing

mixed ADC or mixed AADC trays for that NDC/ASF facility. Labeling:

* * * * *

The Postal Service will incorporate these revisions into the November 6, 2023, edition of the online DMM, which is available via Postal Explorer® at pe.usps.com.

— Product Classification,
Product Solutions, 6-29-23

IMM Revision: Individual Country Listing for Singapore

Effective June 29, 2023, the Postal Service™ is revising the Individual Country Listing for Singapore in *Mailing Standards of the United States Postal Service*, International Mail Manual (IMM®) to provide information on the Goods and Services Tax (GST) for goods sent to Singapore.

This revision is based on a formal request that Singapore Post Limited (SingPost, the designated postal operator of Singapore) made through the Universal Postal Union via *International Bureau Circular 173*, dated November 7, 2022.

Mailing Standards of the United States Postal Service, International Mail Manual (IMM)

* * * * *

Individual Country Listings

* * * * *

Singapore

Country Conditions for Mailing

* * * * *

Observations

* * * * *

[Add an entry to read as follows (adding a 1 before the first entry):]

- As of January 1, 2023, the Goods and Services Tax (GST) import relief threshold exemption of 400 Singapore dollars (SGD) is abolished for Business to

Consumer (B2C) mailers that meet both of the following conditions:

- Have an annual global turnover exceeding 1 million SGD.
- Send B2C supplies of low-value goods (LVG — i.e., less than \$400 SGD) to Singapore exceeding 100,000 SGD.

Such mailers must register and pay the GST when sending goods to Singapore.

SingPost (the designated operator of Singapore) recommends that such B2C mailers place the GST registration number and the GST amount paid in the exporter reference field of the customs declaration form or, when applicable, on the commercial invoice affixed to the exterior of the item. For more information regarding GST, mailers may visit [iras.gov.sg/taxes/goods-services-tax-\(gst\)/gst-and-digital-economy/gst-on-imports-of-low-value-goods](https://iras.gov.sg/taxes/goods-services-tax-(gst)/gst-and-digital-economy/gst-on-imports-of-low-value-goods) or contact the Inland Revenue Authority of Singapore (IRAS) at iras.gov.sg/contact-us.

* * * * *

Although effective June 29, 2023, the Postal Service will incorporate this revision into a later edition of the online IMM (after the one scheduled for July 9, 2023). The IMM is available via Postal Explorer® at pe.usps.com.

— Product Classification,
Product Solutions, 6-29-23

Publications

Correction: Publication 431 Revision: Changes to Post Office Box Service and Caller Service Fee Groups

Effective June 29, 2023, Publication 431, *Post Office Box Service and Caller Service Fee Groups*, is revised to include the following changes.

Publication 431, *Post Office Box Service and Caller Service Fee Groups*

* * * * *

[Revise the following entries:]

ZIP Code	Fee Group
00963C	34
78004	35

* * * * *

[Delete the following entries:]

ZIP Code	Fee Group
46769	2
94806B	32

* * * * *

The online version of Publication 431 is dated July 2013. Publication 431 is currently available on the Postal Service™ PolicyNet website (blue.usps.gov/cpim):

- Go to blue.usps.gov.
- In the left-hand column, click *Essential Links*, and then click *PolicyNet*.
- Go to the right-hand side under “Published Forms and Directives.”
- Click *Publications*.

Offices with WebBATS Manager/Supervisor access can view current Publication 431 information by going to the WebBATS Edit Facility Information page, as follows:

1. Go to the WebBATS main menu, and select Utility> Facility>Edit Facility option.
2. View the Fee Group field on the Edit Facility Information page.

— *Post Office Operations,
Retail and Post Office Operations, 6-29-23*

Organization Information

Environmental Management

Used Battery Disposal Requirements

Most used batteries contain hazardous components and cannot be disposed of in the trash. These batteries are typically regulated as Universal Waste and are subject to strict management requirements. Examples of regulated Universal Waste include spent or inoperable batteries from mobile scanners, phones, laptops, and other electronic equipment.

USPS® sites must recycle Universal Waste batteries using the following services provided by Cleanlites Recy-

cling, Inc. on eBay+ (see USA Lamp & Ballast Recycling, Inc. catalog):

- **Mailback services.** Waste batteries must only be shipped via FedEx®, using the appropriate Cleanlites “LampMaster” recycling kits.
- **Direct or on-site pickup services.** Sites with large quantities of Universal Waste batteries can schedule a direct pickup.

Important: Do *NOT* send waste batteries to the Atlanta Mail Recovery Center, Ybor City Processing and Distribution Center (Tampa Logistics and Distribution Center), or the Topeka Material Distribution Center.

USPS employees must determine the battery type and follow the appropriate handling, storage, and disposal procedures (see table):

Used Battery Type	Waste Classification	Recycling Method
Alkaline batteries	Non-hazardous Waste	Recycle through a local recycling center or through Cleanlites’ recycling service on eBay+. When recycling is impractical, alkaline batteries can be disposed of in the trash. Note: Alkaline batteries in California must be managed as a Universal Waste and recycled through Cleanlites’ recycling services on eBay+.
Small non-alkaline dry cell batteries and small sealed lead-acid batteries	Universal Waste	Recycle through Cleanlites’ recycling service on eBay+.
Large lead-acid batteries	Not classified as Universal Waste (or Hazardous Waste) if they are reclaimed/recycled.	Arrange pickup of vehicular lead-acid batteries through the facility’s vehicle battery supplier and pickup of industrial lead-acid batteries through EnerSys® Inc.

For more information, about battery disposal and recycling:

- Consult your designated environmental contact at blue.usps.gov/sustainability/contact.htm.
- Review the guidance from *Environmental Compliance Bulletin: Used Batteries* at blue.usps.gov/sustainability/environmental/_pdf/waste/ecb-used-batteries.pdf.

- Visit the Environmental Affairs battery recycling website at blue.usps.gov/sustainability/battery-recycling.htm.

— *Environmental Affairs and Corporate Sustainability, Corporate Affairs, 6-29-23*

Pull-Out Information

Fraud

Invalid USPS Corporate Account Numbers

Provide this listing to Contract Postal Units and acceptance clerks in non-POS locations without intranet access to validate a USPS Corporate Account (USPSCA) number online. For all other locations, online USPSCA validation is preferred. This list supersedes all previous notices, which you must recycle.

Acceptance clerks must not accept Priority Mail Express® shipments bearing an invalid USPSCA number in the “Payment by Account” or “Agreement Number” section of the label or form.

Note: The first 6 digits of a 9-digit Custom Designed Service and Next Day Pickup Agreement make up the Corporate Account Number.

005919	020340	060025	085468	115936	132421	276081	380188	481317	612038	761829	921655	995501
009572	020573	060227	088443	115948	135241	286037	381413	486295	616048	770193	925058	995808
010782	021015	061517	088575	115985	142017	295470	402956	494251	628153	811040	926203	995883
011048	022569	069046	092464	117605	148410	301912	405184	495146	641696	832044	928191	997104
014930	023700	071615	092586	118035	171020	303641	420048	495465	641763	846052	931868	997243
014975	026083	071660	094440	118862	191468	326184	436217	497050	666020	852775	940956	998208
015181	027018	075479	100595	119029	192778	330182	437056	515090	681621	900543	941745	998510
015478	027329	076544	102093	119032	196053	331771	441746	551871	722098	900685	948490	999221
016046	028035	077509	103351	119210	220298	331838	453043	553900	730164	900730	968438	
016888	029129	077602	108171	119293	221248	332194	454775	604157	740577	907793	968644	
018104	029291	078203	109419	119320	221655	333824	463050	606772	744071	907999	968657	
018157	033251	080503	110120	119356	222002	340818	467080	607304	744131	911244	970844	
018762	044102	080643	110213	121251	235435	342039	472020	607364	750004	915500	982275	
019017	054010	080669	115560	130281	272290	349257	480533	608035	752541	918174	995190	

— Product Information Requirements, Mail Entry and Payment Technology, 6-29-23

Missing, Lost, or Stolen U.S. Money Order Forms

Do Not Cash — Upon Receipt, Notify Local Postal Inspectors

Provide this listing to all Postal Service™ employees responsible for accepting and cashing postal money orders. Destroy all interim notices when the numbers listed appear in the *Postal Bulletin*. The new money order serial

numbers consist of the first 10 digits. The eleventh digit is a check digit only.

Do not cash outdated money orders **104 151 601 to 692 600 000**. Advise holders to send invalid money orders to Canada Post Corporation, Ottawa, Canada K1A 0B1. Check for altered dollar amounts by holding money orders to the light.

010 001 0200	to	0299	040 688 8816	to	8899	077 617 5481	to	5499	126 423 0136	to	0169
010 504 1932	to	1999	041 299 6752	to	6799	077 999 4001	to	4090	127 500 2328	to	2399
011 582 1889	to	1899	041 623 8889	to	8899	078 174 4475	to	4499	160 901 2254	to	2299
011 588 2900	to	3099	041 803 6565	to	6599	078 219 4931	to	4999	161 103 6581	to	6599
012 441 0784	to	0799	043 129 1968	to	1997	078 250 4756	to	4799	161 194 2857	to	0899
012 579 5675	to	5699	043 205 5922	to	5999	078 823 8312	to	8399	162 032 4447	to	4499
013 289 6176	to	6199	044 087 3457	to	3499	079 374 0300	to	2499	163 257 1085	to	1099
013 610 0014	to	0099	044 087 4000	to	4099	079 807 2342	to	2399	164 359 2406	to	2499
014 932 1000	to	1099	044 226 2487	to	2512	082 721 0228	to	0254	166 101 1433	to	1499
014 972 0800	to	0899	044 306 4200	to	4299	083 140 5000	to	7499	167 555 5201	to	5212
015 363 0065	to	0099	044 306 4370	to	4599	083 784 8886	to	8899	167 555 5214	to	5299
017 028 3200	to	3299	045 524 4121	to	4298	083 913 6915	to	6999	169 618 6274	to	6299
018 569 5333	to	5399	046 800 9870	to	9899	084 478 3920	to	3999	171 806 6878	to	6893
018 986 5264	to	5299	047 352 4000	to	4099	086 000 8271	to	8299	173 639 4685	to	4699
019 518 2814	to	2899	048 383 7650	to	7659	086 798 3840	to	3849	174 238 2779	to	2799
020 698 5159	to	5199	048 396 3647	to	3699	088 404 4472	to	4499	174 281 9347	to	9399
020 844 7307	to	7399	051 142 0755	to	0799	088 404 5584	to	5699	175 251 2600	to	0699
020 972 8948	to	8999	051 774 8857	to	8899	088 757 8688	to	8699	176 281 7937	to	7950
022 021 9110	to	9181	051 781 2875	to	2885	088 757 9400	to	9499	176 281 7963	to	7999
022 037 1411	to	1499	051 977 7010	to	7023	089 358 2248	to	2257	176 731 6586	to	6599
022 527 9201	to	9210	052 058 7115	to	7199	090 663 9678	to	9684	178 254 5000	to	9999
022 529 1882	to	1899	054 450 1130	to	1167	091 818 0071	to	0099	178 881 9900	to	9999
023 637 7169	to	7199	057 670 0563	to	0599	093 106 9346	to	9355	180 031 2089	to	2098
024 380 4100	to	4199	058 187 3836	to	3899	093 203 0500	to	0599	180 403 7723	to	7741
024 496 6870	to	6896	058 523 3003	to	3099	093 684 3630	to	3699	180 428 4580	to	0599
025 092 0987	to	0999	058 591 1153	to	1299	094 081 5074	to	5099	182 368 7544	to	0599
025 369 5535	to	5599	058 895 3746	to	3799	094 216 2555	to	2599	182 475 3229	to	3258
025 729 1151	to	1199	059 986 0814	to	0899	094 580 7062	to	7099	182 475 3904	to	3933
025 729 1643	to	1799	060 406 7650	to	7699	094 639 4200	to	4299	182 631 0031	to	0099
026 492 3180	to	3199	063 491 8122	to	8199	095 070 7186	to	7199	182 911 6539	to	6600
027 361 0430	to	0499	063 916 9968	to	9999	095 076 8300	to	8399	184 218 2760	to	2799
027 369 4482	to	4495	064 091 4500	to	4599	095 354 6864	to	6899	185 828 1474	to	1499
027 671 8762	to	8776	065 170 0471	to	0499	097 224 1350	to	1599	186 132 7583	to	0599
027 787 9886	to	9899	065 255 7909	to	7999	100 160 3800	to	3899	186 629 0589	to	0599
027 965 9487	to	9499	065 392 6345	to	6399	104 667 6400	to	6499	187 184 6177	to	0199
028 100 8069	to	8099	066 099 2014	to	2099	104 876 8937	to	8999	187 323 8200	to	8299
028 191 1852	to	1999	066 648 2880	to	2899	112 049 4413	to	4499	187 441 6080	to	6099
028 850 3000	to	3199	066 787 3639	to	3699	112 870 9765	to	9799	188 831 6774	to	6799
029 510 1500	to	1599	066 845 7500	to	9999	113 319 2000	to	2099	188 835 6370	to	6399
030 687 0903	to	0999	067 093 3869	to	3899	114 402 3850	to	3899	189 083 1064	to	1099
030 701 3442	to	3499	068 895 0334	to	0399	114 866 5368	to	5397	189 660 9583	to	9599
031 077 4507	to	4799	070 724 4488	to	4499	116 154 2800	to	2899	191 179 0377	to	0399
032 295 7500	to	9999	070 841 9181	to	9199	116 986 4400	to	4499	192 050 5762	to	5781
034 394 1000	to	1099	070 844 2546	to	2599	117 175 1647	to	5169	194 456 8600	to	0699
034 943 0400	to	0799	070 916 1340	to	1399	117 951 4687	to	4699	195 194 6881	to	6899
035 035 4337	to	4399	071 047 5768	to	5799	117 951 5200	to	5299	195 874 1112	to	1199
037 312 7500	to	7599	071 179 9800	to	9899	119 786 3051	to	3064	196 979 0524	to	0599
037 706 9578	to	9599	071 386 3682	to	3699	119 815 8961	to	6199	197 244 6100	to	6199
037 805 3677	to	3699	071 507 6840	to	6899	119 850 7400	to	7499	197 244 6300	to	6399
037 909 5490	to	5499	072 045 9641	to	9699	119 850 7700	to	7999	197 244 6400	to	6499
037 931 4660	to	4699	072 675 8287	to	8299	121 634 0460	to	0499	197 244 6500	to	6599
039 145 6521	to	6595	073 763 0867	to	0876	122 451 9879	to	9899	197 244 6600	to	6699
040 024 3901	to	3999	073 763 0878	to	0887	122 714 6805	to	6900	197 244 6700	to	6799
040 674 7100	to	7199	073 763 0889	to	0898	124 916 0304	to	0499	197 244 6800	to	8999

198 285 2556	to	2566	242 591 2048	to	2099	256 134 9850	to	9859	259 218 1400	to	1499
199 105 0778	to	0799	242 735 0388	to	0398	256 134 9860	to	9869	259 218 1500	to	1599
199 678 2968	to	2999	242 951 7276	to	7299	256 134 9870	to	9879	259 218 1600	to	1699
202 748 5133	to	5199	243 535 6370	to	6399	256 134 9880	to	9889	259 590 5654	to	5699
202 748 5245	to	5299	244 004 9985	to	9999	256 134 9890	to	9899	259 670 8268	to	8299
202 748 5300	to	5399	244 004 9985	to	9999	256 247 6900	to	6999	259 835 6238	to	6399
202 748 5400	to	5499	244 268 9765	to	9799	256 550 5536	to	5545	259 835 6701	to	6799
203 256 1240	to	1299	244 347 4471	to	4499	256 799 2257	to	2299	260 224 4600	to	4699
204 230 3577	to	3595	249 056 1551	to	1599	257 154 8763	to	8799	260 224 5941	to	5999
205 019 0174	to	0199	249 336 9438	to	9499	257 154 8800	to	8899	260 310 2821	to	2899
206 936 3184	to	3199	249 399 4000	to	4099	257 765 4567	to	4599	260 452 0010	to	0022
207 196 9900	to	9999	249 399 4100	to	4199	257 765 4610	to	4696	260 452 0049	to	4299
207 204 0700	to	0799	249 399 4200	to	4299	257 765 4737	to	4799	260 553 8200	to	8299
207 204 0800	to	0899	249 399 4300	to	4399	257 792 7800	to	7889	260 553 8600	to	8699
207 514 3857	to	3899	249 399 4400	to	4499	257 792 7900	to	7999	260 553 9600	to	9799
208 556 4707	to	4799	249 399 4500	to	4599	257 792 8000	to	8099	260 553 9800	to	9899
210 057 4038	to	4047	249 399 4600	to	4699	257 856 9863	to	9899	260 553 9900	to	9999
210 221 0548	to	0599	249 399 4700	to	4799	258 103 1773	to	1782	260 761 1603	to	1662
214 061 4711	to	4724	249 399 4800	to	4899	258 405 1800	to	1899	261 183 2100	to	2299
214 303 6311	to	6325	249 399 4900	to	4999	258 405 1900	to	1999	261 426 0408	to	0499
214 303 6239	to	6258	250 159 7502	to	7599	258 405 3300	to	3399	262 082 8000	to	8099
214 877 4251	to	4273	250 566 9644	to	9699	258 405 3400	to	3499	262 082 8100	to	8199
215 252 3918	to	3992	250 661 8425	to	8499	258 405 3500	to	3599	262 082 8200	to	8299
217 585 1400	to	1499	251 335 5731	to	5799	258 405 3700	to	3799	262 082 8300	to	8399
218 698 2157	to	2199	251 379 2380	to	2399	258 405 3800	to	3899	262 082 8400	to	8499
218 746 0800	to	0899	252 005 7626	to	7699	258 405 3900	to	3999	262 288 7302	to	7399
219 095 0100	to	0399	252 421 8401	to	8499	258 405 4000	to	4099	262 288 7400	to	7499
219 389 1885	to	1899	252 464 2810	to	2899	258 405 4100	to	4199	262 288 9900	to	9999
219 568 7435	to	7456	252 612 3683	to	3699	258 405 4200	to	4299	262 337 2600	to	2699
219 568 7469	to	7487	252 469 2125	to	2199	258 405 4600	to	4699	262 337 2700	to	2700
221 316 5757	to	5799	252 833 3286	to	3297	258 405 5600	to	5699	262 337 2800	to	2800
223 476 3914	to	3999	253 470 3948	to	3999	258 405 5700	to	5799	262 337 2900	to	2900
223 565 4921	to	4957	253 565 7400	to	7499	258 405 5800	to	5899	262 337 3000	to	3099
223 565 4979	to	4999	254 252 2800	to	2899	258 405 5900	to	5999	262 337 3100	to	3199
224 636 4745	to	4765	254 252 2900	to	2999	258 405 6000	to	6099	262 337 3200	to	3299
224 636 4776	to	4799	254 252 3000	to	3099	258 405 6100	to	6199	262 337 3300	to	3399
224 636 4855	to	4885	254 252 3100	to	3199	258 405 6200	to	6299	262 337 3400	to	3499
224 636 4932	to	4948	254 252 3200	to	3299	258 405 6300	to	6399	262 337 3500	to	3599
224 636 4950	to	4962	254 252 3300	to	3399	258 405 6400	to	6499	262 337 3600	to	3699
224 636 4985	to	4999	254 252 3400	to	3499	258 405 6800	to	6899	262 337 3700	to	3799
224 723 0757	to	0799	254 252 3500	to	3599	258 405 6900	to	6999	262 337 3800	to	3899
224 730 2207	to	2299	254 252 3600	to	3699	258 405 7000	to	7099	262 337 3900	to	3999
225 970 0500	to	0599	254 252 3700	to	3799	258 405 7100	to	7199	262 337 4000	to	4099
225 970 0600	to	0699	254 252 3800	to	3899	258 405 7200	to	7299	262 337 4100	to	4199
225 970 0700	to	0799	254 252 3900	to	3999	258 405 7300	to	7399	262 337 4200	to	4299
227 033 8679	to	8699	254 252 4000	to	4099	258 405 7400	to	7499	262 337 4300	to	4399
227 275 9400	to	9999	254 252 4100	to	4199	258 405 7800	to	7899	262 337 4400	to	4499
228 463 2456	to	2499	254 252 4200	to	4299	258 405 7900	to	7999	262 337 4500	to	4599
228 510 4852	to	4899	254 252 4300	to	4399	258 405 8000	to	8099	262 337 4600	to	4699
229 462 8451	to	8475	254 252 4400	to	4499	258 405 8100	to	8199	262 337 4700	to	4799
229 668 5977	to	5999	254 252 4500	to	4599	258 405 8200	to	8299	262 337 4800	to	4899
229 923 9176	to	9199	254 252 4600	to	4699	258 405 8300	to	8399	262 337 4900	to	4999
229 924 6696	to	6699	254 252 4700	to	4799	258 405 8400	to	8499	262 337 5000	to	5099
230 051 9500	to	9999	254 252 4800	to	4899	258 405 8500	to	8599	262 337 5100	to	5199
236 366 2431	to	2499	254 252 4900	to	4999	258 405 8600	to	8699	262 337 5200	to	5299
236 607 6882	to	6899	254 565 7607	to	7700	258 405 8700	to	8799	262 337 5300	to	5399
236 660 5853	to	5872	254 907 1203	to	1299	258 405 8800	to	8899	262 337 5400	to	5499
239 322 5200	to	5299	255 185 9527	to	9599	258 405 8900	to	8999	262 337 5500	to	5599
239 322 5400	to	5499	255 397 1557	to	1576	258 405 9600	to	9699	262 337 5600	to	5699
239 322 5600	to	5699	255 425 2989	to	2998	258 405 9700	to	9799	262 337 5700	to	5799
239 322 5800	to	5899	255 728 6412	to	6499	258 405 9800	to	9899	262 337 5800	to	5899
239 322 5900	to	5999	255 728 9842	to	9899	258 405 9900	to	9999	262 337 5900	to	5999
239 607 4783	to	4799	256 134 9833	to	9839	259 014 9989	to	9999	262 337 6000	to	6099
240 593 1879	to	1899	256 134 9840	to	9849	259 062 4788	to	4798	262 337 6100	to	6199

262 337 6200	to	6299	263 340 0500	to	0599	385 774 2024	to	2099	406 733 3000	to	3999
262 337 6300	to	6399	263 340 0600	to	0699	386 624 1412	to	1599	407 545 1557	to	1599
262 337 6400	to	6499	263 340 2700	to	2799	386 883 8936	to	8999	407 594 0412	to	0599
262 337 6500	to	6599	263 340 2800	to	2899	387 314 5574	to	5599	407 692 9100	to	9299
262 337 6600	to	6699	263 340 3000	to	3099	387 837 6300	to	6399	407 959 2190	to	2199
262 337 6700	to	6799	264 341 2360	to	2399	388 828 0656	to	0699	408 265 2275	to	2288
262 337 6800	to	6899	264 380 4000	to	4099	389 696 2400	to	2799	408 499 7700	to	7799
262 337 6900	to	6999	264 380 4100	to	4199	389 846 3104	to	3135	408 499 7900	to	7999
262 337 7000	to	7099	264 799 6049	to	6099	389 846 3145	to	3195	408 682 8484	to	8599
262 337 7100	to	7199	264 860 7832	to	7868	389 887 9211	to	9230	408 698 7015	to	7099
262 337 7200	to	7299	265 127 3658	to	3699	389 887 9234	to	9299	409 072 3941	to	3999
262 337 7300	to	7399	265 380 7111	to	7137	390 001 3182 to 3199			410 491 2311 to 2399		
262 337 7400	to	7499	265 444 4762	to	4799	390 001 3500	to	3699	410 694 8400	to	8599
262 337 7500	to	7599	265 548 7074	to	7099	390 545 5974	to	5999	410 775 1500	to	1599
262 337 7600	to	7699	266 106 0000	to	2499	391 104 6146	to	6199	410 795 7927	to	7999
262 337 7700	to	7799	266 129 5809	to	5899	391 574 1466	to	1499	410 867 0917	to	0966
262 337 7800	to	7899	266 673 0000	to	2499	391 783 3020	to	3599	410 867 0970	to	0999
262 337 7900	to	7999	266 749 7900	to	7999	391 792 6100	to	6199	411 868 1023	to	1199
262 337 8000	to	8099	266 868 0952	to	0999	392 668 2956	to	2999	411 922 2322	to	2399
262 337 8100	to	8199	266 868 1028	to	1099	392 854 8500	to	8899	412 193 0900	to	0999
262 337 8200	to	8299	266 868 1100	to	1199	393 584 7566	to	7699	412 395 8599	to	8699
262 337 8300	to	8399	266 868 1200	to	1299	393 650 0074	to	0099	412 485 6500	to	6599
262 337 8400	to	8499	267 296 1237	to	1299	393 838 8316	to	8499	412 485 6610	to	6699
262 337 8500	to	8599	267 324 8946	to	8998	393 893 6007	to	6099	412 885 5953	to	5999
262 337 8600	to	8699	268 072 1203	to	1299	394 126 6907	to	6999	414 193 3608	to	3674
262 337 8700	to	8799	271 660 4333 to 4400			394 189 0405	to	0599	414 193 3677	to	3699
262 337 8800	to	8899	273 520 0000	to	9999	394 822 3243	to	3278	414 411 7348	to	7399
262 337 8900	to	8999	273 520 6000	to	8999	394 990 1810	to	1899	414 640 0757	to	0799
262 337 9000	to	9099	273 775 7700	to	7899	395 343 3264	to	3299	414 965 1727	to	1799
262 337 9100	to	9199	273 882 1913	to	1998	395 373 3035	to	3099	417 302 8104	to	8199
262 337 9200	to	9299	274 750 0300	to	0400	395 396 9649	to	9799	417 387 6532	to	6599
262 337 9300	to	9399	274 782 0549	to	0599	395 970 3240	to	3299	417 496 6800	to	6999
262 337 9400	to	9499	279 517 9330	to	9399	397 622 4054	to	4099	417 871 9250	to	9299
262 337 9500	to	9599	279 517 9594	to	9599	397 819 8902	to	8999	417 930 9533	to	9599
262 337 9600	to	9699	279 517 9623	to	9699	398 149 7200	to	7699	418 164 6500	to	6799
262 337 9700	to	9799	282 667 2500 to 4999			399 070 0872	to	0899	418 423 9863	to	9899
262 337 9800	to	9899	302 000 0000 to 9999			399 156 7119	to	7199	418 633 5922	to	5999
262 337 9900	to	9999	349 746 2056 to 2099			399 203 5064	to	5099	418 719 8520	to	8599
262 472 3188	to	3199	350 518 7350 to 7374			399 296 9910	to	9999	418 744 2235	to	2299
262 472 3200	to	3299	360 011 1690 to 1699			399 396 8935	to	8999	418 962 2848	to	2899
262 546 3100	to	3199	360 168 6008	to	6099	399 792 7775	to	7799	419 543 0286	to	0299
262 546 3200	to	3299	360 173 8800	to	8899	399 792 8300	to	8399	419 730 0300	to	0399
262 546 3300	to	3399	360 324 2326	to	2399	400 427 1051 to 1999			420 277 0015 to 0049		
262 546 3400	to	3499	362 861 3064	to	3099	401 045 1505	to	1549	420 599 0734	to	0798
262 546 3500	to	3599	373 006 2176 to 2199			401 045 1571	to	1599	420 661 4115	to	4199
262 546 3600	to	3699	374 768 2600	to	2699	401 294 2700	to	2799	420 758 9500	to	9699
262 546 3900	to	3999	375 169 4400	to	4599	401 310 9505	to	9599	420 969 3951	to	3971
262 546 4300	to	4399	375 829 3400	to	3499	401 382 5312	to	5399	420 969 3973	to	3999
262 546 4400	to	4499	375 851 9100	to	9199	402 578 7876	to	7899	421 116 3565	to	3599
262 546 4500	to	4599	376 196 0911	to	0999	403 125 6744	to	6799	421 130 9300	to	9399
262 546 4600	to	4699	378 085 3679	to	3699	403 260 7000	to	7499	421 313 4500	to	4999
262 546 4700	to	4799	378 351 1063	to	1099	403 280 6470	to	6499	421 364 5537	to	5599
262 546 4800	to	4899	379 843 5100	to	5199	403 685 8600	to	8699	421 656 2609	to	2699
262 546 4900	to	4999	380 093 9600 to 9699			404 003 0300	to	0399	421 988 9700	to	9799
262 546 7100	to	7199	380 165 1165	to	1199	404 041 8838	to	8899	422 172 4667	to	4699
262 546 7200	to	7299	381 325 4500	to	4599	404 071 4268	to	4299	422 484 4212	to	4299
262 546 7300	to	7399	381 604 2510	to	2699	404 347 5356	to	5399	422 556 1270	to	1299
262 546 7400	to	7499	381 645 9525	to	9599	404 347 5548	to	5599	422 587 7024	to	7099
262 546 9800	to	9899	383 314 3968	to	3999	404 726 4500	to	4599	422 819 7533	to	7599
262 546 9900	to	9999	383 892 1000	to	1344	404 961 5001	to	5199	422 842 5073	to	5087
262 567 1788	to	1799	383 892 1382	to	1399	405 325 0188	to	0198	422 907 7563	to	7599
263 254 2500	to	2500	384 925 3641	to	3654	406 009 4587	to	4599	424 500 6050	to	6099
263 340 0000	to	0099	385 568 2331	to	2399	406 260 6830	to	6899	424 641 8500	to	8599
263 340 0100	to	0199	385 599 7554	to	7575	406 459 6641	to	6999	424 871 6600	to	6699

425 298 2352	to	2399	453 603 7841	to	7891	469 666 9900	to	9999	486 559 7555	to	7599
425 418 4269	to	4299	453 650 1140	to	1199	469 678 1900	to	1999	486 696 3023	to	3199
425 418 4405	to	4499	453 741 1300	to	1399	469 781 4900	to	4999	488 173 7900	to	7999
426 547 4566	to	4599	454 013 2919	to	2999	469 947 6960	to	6999	488 206 4100	to	4199
427 412 6337	to	6499	454 186 2411	to	2499	470 755 5800	to	5818	488 226 0200	to	0299
427 481 0900	to	0999	454 268 4883	to	4899	471 918 0300	to	0999	488 709 3906	to	3999
428 027 2742	to	2752	454 302 5400	to	5499	471 985 2408	to	2419	488 855 8359	to	8399
429 474 4172	to	4199	454 490 8300	to	8399	472 191 6700	to	6799	489 181 8963	to	8999
429 889 2900	to	2999	454 547 7434	to	7499	472 270 2555	to	2599	489 223 2000	to	2099
430 150 4401	to	4599	454 922 4867	to	4895	472 987 0213	to	0241	489 311 1930	to	1999
430 172 9800	to	9899	455 221 1348	to	1499	472 987 0290	to	0299	489 318 6200	to	6300
430 177 1900	to	2099	455 364 2147	to	2199	473 151 2069	to	2199	489 384 0027	to	0099
430 444 9500	to	9699	455 399 5400	to	5499	473 666 9138	to	9199	489 427 0658	to	0899
430 664 4070	to	4099	455 476 0676	to	0699	473 952 3429	to	3499	489 997 5252	to	5299
432 168 8419	to	8499	455 543 0618	to	0699	474 108 5402	to	5499	490 669 5850	to	6099
432 708 6800	to	6999	456 410 9006	to	9099	474 356 5193	to	5299	490 717 7080	to	7099
432 744 1544	to	1599	456 470 4146	to	4299	474 949 3366	to	3399	490 721 6000	to	6099
432 995 9775	to	9799	456 619 4460	to	4499	475 134 9362	to	9399	490 793 1500	to	2099
433 003 5800	to	5899	457 333 2686	to	2699	475 167 9667	to	9699	490 886 8171	to	8199
433 757 3047	to	3099	457 729 1767	to	1777	475 319 3415	to	3499	490 977 9221	to	9240
433 765 4003	to	4099	457 937 8615	to	8699	475 319 3649	to	3799	491 258 8100	to	9099
434 482 7060	to	7199	458 028 9810	to	9899	475 340 6400	to	6599	491 567 1376	to	1399
434 513 2386	to	2399	458 057 2712	to	2999	475 424 8410	to	8499	492 254 4800	to	4899
434 968 3076	to	3092	458 069 9537	to	9599	475 629 9156	to	9199	492 283 5100	to	5199
435 303 1831	to	1842	458 069 9665	to	9699	475 850 6101	to	6199	492 610 6813	to	6899
435 303 1986	to	1999	458 337 5222	to	5299	475 875 2500	to	2599	493 394 5568	to	5599
435 666 6092	to	6399	458 354 7653	to	7999	476 169 8264	to	8299	493 470 2562	to	2599
436 082 6400	to	6899	458 671 8678	to	8699	476 189 3000	to	3499	493 473 7700	to	7799
436 160 6441	to	6499	458 671 8721	to	8798	476 331 2480	to	2499	493 716 2153	to	2199
437 316 7115	to	7199	458 847 5044	to	5999	477 289 8601	to	8699	494 206 2972	to	2999
437 427 0500	to	3499	459 274 7624	to	7699	477 681 5206	to	5299	494 217 3446	to	3999
439 179 2300	to	2399	459 365 5432	to	5499	478 010 4243	to	4268	494 224 0500	to	0599
439 310 0458	to	0499	459 378 5764	to	5799	478 010 4270	to	4291	495 145 0600	to	0699
440 698 1947	to	1999	459 472 4816	to	4999	478 450 5071	to	5099	496 209 7425	to	7499
440 858 6300	to	6399	460 349 6878	to	6899	478 469 7838	to	7858	496 213 8728	to	8799
440 858 6420	to	7299	460 550 1909	to	1999	478 469 7883	to	7899	496 474 5226	to	5248
441 199 1655	to	1699	460 997 5234	to	5299	479 280 9800	to	9899	497 053 8517	to	8699
443 127 3648	to	3699	461 973 6443	to	6499	479 365 9116	to	9176	497 854 8673	to	8699
443 127 4000	to	4099	462 152 0107	to	0299	479 412 9900	to	9999	498 449 8888	to	8899
443 673 7900	to	7999	462 274 1072	to	1099	479 667 6190	to	6199	498 929 8285	to	8499
443 800 9335	to	9399	462 277 8373	to	8399	479 748 9680	to	9699	498 936 5310	to	5399
444 382 8822	to	8899	462 554 6051	to	6099	479 860 7000	to	7199	499 016 5425	to	5499
444 390 1667	to	1699	463 011 5529	to	5540	480 526 2000	to	2099	499 440 8575	to	8899
444 457 3854	to	3899	463 176 4115	to	4199	480 640 6330	to	6399	499 731 6717	to	6799
450 048 4173	to	4199	463 176 4229	to	4299	480 658 0568	to	0599	500 064 1858	to	1869
450 048 4442	to	4699	463 185 2600	to	2799	480 689 5100	to	5199	500 070 5725	to	7799
450 560 5173	to	5199	463 227 7711	to	7799	481 072 9463	to	9499	501 058 0016	to	0026
450 620 3077	to	3099	463 414 4869	to	4899	481 673 0074	to	0095	501 331 0300	to	0399
450 620 3135	to	3199	463 808 3484	to	3499	482 527 1500	to	1599	501 460 0977	to	0999
450 780 2716	to	2799	463 945 7400	to	7899	482 541 5255	to	5299	502 227 7645	to	7699
450 801 2700	to	2799	464 629 9000	to	9399	482 729 6800	to	6899	502 424 0200	to	0499
451 109 2967	to	2984	464 711 4332	to	4399	483 363 7207	to	7299	502 424 0600	to	0699
451 115 4110	to	4125	465 692 3963	to	3999	483 402 2356	to	2399	502 496 6923	to	6999
451 115 4127	to	4199	465 698 8300	to	8599	483 486 5100	to	5199	503 003 2700	to	2899
451 746 0700	to	0799	465 743 7745	to	7799	483 632 1521	to	1599	503 194 5144	to	5153
452 265 0074	to	0099	466 798 6056	to	6067	483 632 2600	to	2799	503 790 9922	to	9948
452 265 0246	to	0299	467 147 4300	to	4399	483 849 1615	to	1699	504 045 4030	to	4099
452 265 0335	to	0999	468 079 5782	to	5799	484 174 4803	to	5299	504 166 0200	to	0599
452 509 1169	to	1199	469 067 2817	to	2899	484 323 8900	to	9199	504 240 1062	to	1399
452 855 6471	to	6499	469 127 8000	to	8199	484 680 5000	to	5038	504 805 3300	to	3499
452 890 4679	to	4799	469 213 0359	to	0399	484 680 5040	to	5074	505 096 0662	to	0699
452 900 8215	to	8238	469 213 0500	to	0599	484 680 5077	to	5099	505 893 7739	to	7799
453 117 9146	to	9199	469 561 8011	to	8099	485 029 4913	to	4999	505 893 7800	to	7999
453 334 3631	to	3699	469 658 1961	to	1999	486 176 0600	to	0699	506 124 0800	to	0999

506 165 7027	to	0099	609 289 6123	to	6199	632 500 0000	to	640 3999	647 398 8481	to	8499
506 502 5209	to	5299	609 438 4400	to	4499	633 110 4165	to	4199	647 437 3000	to	4999
506 756 1682	to	1699	609 493 1100	to	1199	633 110 4303	to	4499	647 811 2188	to	2199
506 756 1700	to	1799	609 766 8091	to	8999	633 438 6429	to	6599	648 009 6057	to	6099
506 756 1800	to	1899	609 825 4100	to	4115	633 588 7173	to	7182	648 163 5300	to	5499
506 836 5326	to	5399	609 884 2981	to	2999	634 725 0700	to	0799	648 722 5283	to	5299
508 488 6226	to	6299	609 893 1000	to	1099	634 803 3239	to	3299	648 892 3164	to	3199
508 789 8332	to	8399	610 092 3200	to	3299	634 807 2474	to	2499	649 100 3989	to	3999
508 789 8400	to	8499	610 582 4200	to	4299	634 827 5900	to	5999	649 647 0370	to	0399
509 909 0425	to	0435	611 879 6939	to	6999	634 886 3428	to	3499	649 647 0522	to	0599
510 150 2400	to	2499	612 291 8013	to	8099	635 559 3449	to	3499	649 647 5237	to	5399
510 381 3200	to	3299	612 751 5171	to	5199	636 289 6214	to	6299	649 647 9100	to	9299
510 587 9500	to	9599	612 751 5226	to	5299	636 634 8007	to	8042	649 666 7800	to	8299
510 587 9659	to	9699	612 751 6083	to	6099	637 150 1200	to	1299	650 114 7707	to	7719
510 269 9770	to	9999	612 751 6268	to	6299	637 562 5828	to	5899	650 130 3400	to	3599
511 021 5042	to	5099	612 751 6572	to	6599	638 042 1647	to	1699	650 213 0406	to	0499
511 021 5100	to	5199	612 774 2111	to	2199	638 049 4984	to	4999	650 555 1749	to	1799
511 468 1747	to	1799	612 774 2254	to	2299	638 318 1115	to	1199	650 564 1900	to	1999
511 844 0100	to	0199	612 774 2500	to	2599	638 318 1453	to	1499	650 627 4212	to	4299
511 844 0340	to	0399	614 469 0979	to	0999	638 885 0000	to	0299	650 736 2043	to	2099
512 805 3913	to	3919	614 474 3000	to	3099	638 903 4362	to	4373	650 739 1540	to	1699
513 046 0700	to	0726	614 521 3490	to	3499	639 415 1929	to	1999	651 741 4415	to	4499
513 149 0600	to	0699	614 645 1800	to	1899	639 415 2019	to	2099	651 882 2800	to	2899
513 445 3000	to	3199	614 832 1100	to	2099	639 420 6200	to	6299	652 754 6317	to	6399
513 466 2034	to	2044	615 017 7505	to	7599	639 469 3517	to	3799	653 131 4945	to	4999
513 539 9052	to	9099	617 711 6609	to	6699	639 605 2143	to	2199	653 426 3300	to	3399
513 539 9267	to	9299	617 760 5266	to	5299	639 657 8600	to	8799	653 455 4874	to	4899
513 539 9800	to	9899	617 813 3601	to	3699	640 289 7500	to	7599	654 238 0000	to	0399
513 539 9985	to	9999	618 840 9200	to	9299	640 289 7700	to	7999	654 404 3065	to	3092
513 606 5459	to	5490	619 551 7229	to	7299	641 170 4420	to	4499	654 962 2900	to	3199
513 812 1751	to	1799	619 859 3000	to	3099	641 318 3133	to	3199	655 103 5081	to	5199
514 103 3600	to	3699	620 073 9400	to	9499	641 378 6500	to	6999	655 523 2600	to	2999
514 103 3700	to	3799	621 614 7907	to	7930	641 383 8739	to	8799	656 305 2448	to	2499
514 103 3800	to	3899	621 614 7932	to	7999	641 877 3187	to	3299	657 347 4438	to	4999
600 645 3223	to	3299	621 648 8021	to	8199	641 877 3310	to	3399	657 710 8100	to	8999
601 339 1200	to	1399	621 648 8500	to	8599	642 355 8094	to	8199	657 780 0985	to	0999
601 653 5884	to	5899	621 904 8351	to	8599	642 355 8308	to	8999	658 586 1400	to	1499
601 661 7700	to	7799	621 916 1978	to	1989	642 900 0018	to	0099	658 877 8000	to	8199
601 682 5343	to	5399	622 989 8032	to	8099	643 030 6254	to	6299	658 880 8000	to	8199
601 928 1600	to	1699	623 076 9300	to	9399	644 066 0882	to	0899	659 398 7300	to	7399
602 512 2972	to	2999	623 819 5006	to	5099	644 069 0600	to	0699	659 706 8113	to	8199
602 555 2400	to	2799	623 895 8200	to	8399	644 077 7506	to	7699	659 846 7837	to	7899
602 829 7061	to	7099	623 917 0000	to	0099	644 085 8157	to	8199	660 510 4100	to	4199
603 483 9572	to	9599	623 917 0200	to	0299	644 112 9839	to	9899	660 673 0400	to	0599
603 490 7200	to	7299	624 468 5288	to	5299	644 373 9083	to	9099	661 488 5000	to	5099
603 678 7100	to	7199	624 665 3162	to	3198	644 380 1460	to	1499	661 609 9100	to	9199
603 678 7662	to	7699	625 088 6735	to	6799	644 733 4715	to	4799	661 716 9420	to	9499
603 678 7902	to	7999	625 916 9500	to	9799	644 900 9712	to	9799	661 906 6522	to	6599
603 678 8418	to	8499	625 968 8956	to	8999	644 901 0109	to	1299	662 021 8332	to	8399
603 678 8700	to	9999	627 005 3938	to	3999	644 901 1325	to	1399	662 068 0700	to	0899
604 086 0880	to	0899	627 384 3907	to	4099	644 923 6800	to	7799	662 553 0774	to	0799
604 349 1414	to	1499	627 496 7549	to	7599	644 932 4655	to	4699	663 078 7034	to	7099
604 503 7776	to	7799	627 708 3605	to	3699	645 318 7240	to	7499	663 763 5300	to	5399
605 520 9037	to	9099	627 776 2500	to	2599	645 333 1766	to	1799	663 883 7039	to	7499
605 685 4010	to	4099	628 226 3100	to	3199	645 790 8632	to	8699	663 938 9200	to	9299
605 988 6467	to	6499	628 814 4702	to	4799	645 821 0657	to	0699	664 253 8000	to	8499
607 689 7951	to	7960	628 851 9689	to	9699	645 930 7948	to	7999	664 656 3055	to	3099
607 728 1276	to	1299	629 510 7200	to	7299	645 975 0737	to	0762	665 174 6400	to	6499
608 727 7100	to	7199	629 964 4200	to	4294	646 242 6200	to	6299	665 274 8208	to	8299
608 727 7273	to	7599	630 389 3056	to	3071	646 270 7639	to	7799	665 669 5400	to	5499
608 813 9950	to	9999	630 463 0588	to	0599	646 798 4000	to	4999	666 132 8226	to	8299
609 067 5325	to	5399	631 459 9117	to	9199	647 048 7035	to	7099	666 696 2209	to	2299
609 067 5488	to	5499	631 762 9325	to	9399	647 049 2900	to	2999	666 696 2309	to	2399
609 067 5600	to	5699	632 217 4933	to	4999	647 398 8300	to	8399	667 032 9300	to	9399

667 729 5529	to	5599	692 727 9362	to	9399	740 252 9265	to	9294	833 159 1884	to	1899
668 383 8400	to	8699	692 798 1800	to	1899	740 255 1718	to	1799	833 456 2567	to	2599
670 368 3400	to	3499	693 249 0779	to	0799	740 274 2602	to	2619	833 566 3015	to	3071
670 369 7336	to	7399	693 249 0877	to	1699	740 277 0366	to	0392	834 130 5200	to	5299
670 750 7169	to	7199	693 445 0566	to	0999	740 332 7658	to	7671	834 316 5444	to	5499
671 046 6200	to	6399	693 448 8500	to	8999	740 348 6641	to	6658	834 354 8747	to	8766
671 251 5448	to	5499	693 645 9583	to	9599	740 351 4790	to	4799	834 354 8824	to	8838
671 926 5600	to	5799	693 965 4200	to	4299	740 374 7416	to	7499	835 269 5700	to	5799
672 444 2000	to	2999	695 741 2906	to	2999	740 470 2420	to	2443	835 496 7303	to	7399
672 828 3410	to	3499	695 947 8518	to	8599	740 514 0300	to	0499	835 539 5200	to	5999
673 167 5776	to	5799	696 662 8247	to	8299	740 523 7432	to	7449	835 813 3015	to	3099
675 464 3700	to	3799	697 447 8285	to	8296	740 535 1555	to	1580	837 672 8967	to	8999
675 464 4000	to	4199	698 042 4816	to	4899	740 557 3570	to	3579	837 784 3282	to	3299
676 365 5958	to	5999	698 131 2138	to	2157	740 650 4104	to	4140	838 176 8377	to	8399
676 669 1024	to	1099	698 227 0000	to	0099	740 684 0620	to	0800	838 518 1257	to	1299
677 126 6734	to	6799	700 065 2570	to	2599	740 701 6105	to	6114	839 718 8257	to	8299
677 333 9979	to	9999	700 065 4800	to	4899	740 705 9790	to	9799	840 323 0600	to	0699
677 466 1088	to	1099	700 190 3350	to	3359	740 726 6400	to	6500	840 875 6235	to	6299
678 071 4500	to	4799	700 228 6048	to	6099	740 748 8319	to	8329	840 910 0900	to	0999
678 096 7531	to	7599	700 650 0452	to	0499	740 765 3306	to	3399	841 349 5000	to	5099
679 909 2578	to	2599	700 666 1323	to	1349	740 774 8434	to	8499	841 805 7747	to	7899
680 112 9565	to	9599	700 786 9106	to	9142	740 779 4259	to	4299	841 805 7944	to	8099
680 244 0903	to	0999	700 859 0744	to	0758	740 786 1885	to	1899	842 226 0685	to	0695
680 412 6046	to	6099	701 028 6780	to	6899	740 790 5989	to	5999	842 685 4600	to	4699
680 761 6800	to	6899	701 213 3900	to	3999	740 803 4870	to	4879	842 685 4742	to	4999
681 677 0540	to	0699	701 267 2000	to	3999	740 820 4854	to	7836	842 860 0300	to	0399
682 070 1029	to	1099	701 335 7312	to	7399	740 827 7578	to	7594	842 898 5582	to	5599
682 956 6280	to	6299	701 369 2005	to	2050	740 917 7490	to	7499	843 062 7100	to	7199
682 956 6490	to	6599	701 499 2260	to	2299	740 918 5531	to	5549	843 077 6288	to	6299
682 956 6700	to	6799	701 503 2247	to	2299	741 037 8528	to	8551	843 077 6378	to	6399
682 965 1178	to	1199	701 541 2271	to	2299	742 030 6135	to	6149	843 758 5769	to	5778
682 965 1201	to	1299	701 553 6557	to	6599	742 033 2663	to	2674	843 786 2554	to	2699
683 118 2389	to	2399	701 578 7460	to	7469	742 040 3300	to	3309	845 656 8165	to	8199
683 378 2000	to	2099	701 578 7475	to	7499	742 112 8155	to	8199	845 727 2100	to	2199
683 378 2117	to	2299	701 601 3457	to	3499	742 151 5000	to	5014	845 746 2618	to	2635
683 415 1200	to	1499	701 605 5913	to	5999	742 191 4640	to	4649	846 390 7531	to	7599
683 444 8159	to	8199	701 695 3982	to	3999	742 192 5210	to	5224	846 918 0572	to	0599
685 154 7780	to	7789	701 695 4148	to	4199	742 222 9200	to	9210	847 237 7690	to	7699
685 297 7645	to	7699	701 695 4227	to	4299	742 228 9660	to	9669	847 284 2481	to	2499
685 623 5264	to	5299	701 708 1741	to	1799	742 247 9680	to	9689	847 374 7055	to	7065
685 650 9487	to	9499	701 736 3966	to	3999	742 290 0936	to	0950	847 374 7055	to	7065
685 669 4200	to	4299	701 772 0870	to	0899	742 302 7600	to	7699	847 636 5304	to	5399
685 757 8452	to	8499	701 838 2800	to	2899	742 305 3711	to	3799	847 700 5447	to	5499
686 071 2694	to	2799	701 941 0600	to	0699	742 305 3800	to	3899	847 723 7500	to	7599
686 176 3333	to	3354	702 171 1603	to	1699	742 305 3900	to	3999	849 485 3427	to	3499
686 372 3200	to	3299	702 195 5109	to	5199	742 305 4000	to	4099	849 520 9850	to	9899
686 644 5879	to	5899	702 254 9300	to	9399	742 305 4100	to	4199	849 608 1357	to	1399
686 899 1371	to	1399	702 264 7569	to	7599	805 885 8411	to	8499	849 792 2600	to	2699
686 931 7636	to	7699	702 519 0513	to	0524	806 087 1100	to	1499	850 546 1862	to	1899
687 601 0973	to	0999	702 713 1800	to	1809	806 268 9275	to	9299	851 143 6826	to	6844
687 614 6774	to	6799	702 821 5730	to	5799	806 534 3400	to	3477	851 209 9880	to	9899
688 120 9000	to	9999	702 821 5805	to	5899	807 342 3283	to	3399	851 928 9221	to	9299
688 314 3107	to	3191	702 844 6975	to	6994	808 086 7100	to	7199	852 589 6560	to	6599
690 291 1361	to	1371	702 846 6331	to	6399	808 090 3440	to	3499	853 049 3646	to	3699
690 788 2877	to	2899	702 848 3900	to	3999	808 325 5161	to	5699	854 304 4089	to	4999
690 893 5344	to	5399	702 857 7302	to	7499	808 784 8000	to	8299	854 529 2200	to	2299
690 893 5512	to	5599	702 878 0114	to	0199	830 125 0672	to	0699	854 532 0000	to	2999
690 904 1300	to	1599	703 364 1707	to	1799	830 602 5800	to	5999	855 001 6204	to	6249
690 941 6000	to	6199	740 002 7710	to	7719	830 610 3700	to	3799	855 319 9364	to	9399
691 313 6383	to	6399	740 037 6730	to	6800	830 983 3500	to	3599	855 361 3390	to	3399
691 313 6600	to	6699	740 119 2275	to	2284	830 983 3635	to	3699	856 226 0490	to	0499
691 582 8003	to	8099	740 130 6688	to	6698	831 354 1387	to	1399	856 656 5800	to	5999
691 664 1800	to	1999	740 144 2780	to	2795	831 815 8240	to	8299	856 752 0200	to	0299
691 664 2400	to	2499	740 241 9049	to	9099	832 525 3810	to	3899	857 111 1352	to	1399

857 279 3450	to	3499	872 028 4850	to	4899	911 245 2545	to	2599	922 278 1048	to	1399
857 843 4000	to	4099	872 029 9306	to	9399	911 268 9077	to	9099	922 280 2019	to	2099
858 124 7644	to	7699	872 078 3709	to	3799	911 400 8948	to	8999	922 280 2233	to	2299
858 756 3111	to	3299	872 100 0445	to	0459	911 508 1620	to	1799	922 773 0459	to	0499
859 063 8200	to	8699	900 556 4178	to	4199	911 509 9310	to	9399	923 032 7000	to	7399
859 190 0600	to	0644	900 845 0044	to	0099	911 523 3000	to	3999	923 045 3630	to	3699
859 437 5538	to	5599	900 936 0217	to	0299	912 057 9922	to	9999	923 484 3600	to	3699
859 811 2888	to	2899	900 936 0435	to	0499	912 882 0563	to	0899	923 493 9403	to	9599
859 855 8873	to	8999	901 058 5255	to	5280	913 605 2218	to	2299	923 493 9681	to	9699
860 240 8520	to	8599	901 273 1082	to	1099	913 709 2429	to	2499	923 604 4424	to	4499
860 275 3900	to	3999	901 287 5143	to	5199	913 818 3501	to	3999	923 810 7800	to	8299
860 518 9629	to	9699	901 291 2789	to	2799	914 063 4300	to	4399	924 252 1200	to	1299
860 600 0021	to	0999	901 525 7122	to	7199	914 346 7621	to	7644	924 252 1400	to	1499
861 158 2350	to	2599	902 089 1253	to	1299	914 453 1366	to	1399	924 533 0711	to	0799
861 367 5400	to	5499	902 198 9769	to	9799	914 529 6185	to	6299	924 533 2343	to	2399
861 637 6010	to	6099	902 948 1269	to	1299	914 896 4658	to	4699	924 533 2428	to	2499
861 979 7292	to	7499	902 985 0833	to	0899	915 187 8774	to	8779	924 685 1957	to	1999
862 216 6100	to	6199	903 370 6934	to	6999	915 300 2783	to	2799	924 946 6300	to	6699
862 263 9213	to	9299	904 600 6523	to	6599	915 546 6822	to	6999	925 333 5900	to	6099
862 271 0800	to	0999	904 892 0378	to	0399	915 646 5183	to	5199	925 336 2300	to	2399
862 271 5000	to	5099	904 892 0648	to	1299	915 671 3963	to	3980	926 432 5907	to	5999
863 871 5138	to	5199	905 056 2216	to	2299	915 671 3982	to	3999	926 436 3600	to	3699
863 949 5300	to	5399	905 510 6647	to	6799	915 675 2217	to	2299	927 765 6257	to	6299
864 088 8200	to	8299	905 510 6900	to	7099	916 440 3377	to	3399	928 197 8100	to	8199
864 426 3972	to	3999	905 794 0000	to	0199	916 670 6352	to	6399	928 197 8283	to	8299
864 520 6117	to	6136	905 794 0288	to	0299	916 682 5300	to	5399	928 856 2059	to	2068
865 151 0526	to	0599	905 873 6900	to	6999	916 694 1414	to	1499	930 078 5800	to	5899
865 500 4034	to	4099	905 873 7100	to	7299	916 703 0802	to	0821	930 219 1722	to	1799
865 883 6082	to	6099	905 880 8900	to	8999	917 089 0709	to	0799	930 335 7810	to	7819
866 004 3000	to	3999	905 889 7100	to	7199	917 089 0842	to	0899	931 097 9259	to	9299
866 442 4100	to	4899	906 158 1508	to	1599	917 216 2928	to	2999	931 156 1502	to	1579
867 366 9108	to	9118	906 558 8812	to	8899	917 370 6300	to	6499	931 156 1600	to	1625
867 633 7403	to	7499	906 982 2214	to	2299	917 486 4900	to	4999	931 156 1671	to	1699
867 737 5623	to	5699	907 725 8500	to	8599	918 460 0602	to	0699	932 506 6400	to	6599
868 169 4529	to	4599	907 815 0216	to	0257	918 951 7231	to	7299	932 732 1796	to	1799
868 173 8400	to	8599	908 622 4225	to	4235	919 519 2786	to	2799	932 827 9026	to	9099
868 514 9000	to	9099	908 936 9254	to	9299	919 536 0770	to	0799	932 957 2300	to	2399
868 566 9200	to	9299	909 066 4494	to	7499	919 814 3095	to	3199	933 060 6160	to	6189
869 200 0000	to	9999	909 067 7400	to	7499	919 889 5110	to	5134	933 387 2541	to	2561
869 387 1150	to	1199	909 100 1787	to	1799	919 889 5137	to	5176	933 760 3609	to	4199
869 505 3500	to	3599	909 100 1900	to	2099	919 889 5178	to	5199	933 894 0928	to	0999
869 523 7033	to	7099	909 355 0422	to	0499	919 889 5030	to	5070	934 018 2729	to	2741
869 566 6150	to	6167	909 568 8900	to	9099	919 889 5090	to	5099	934 180 0300	to	0399
869 776 8785	to	8786	909 568 9300	to	9499	919 915 2774	to	2787	934 236 3954	to	3999
869 800 0000	to	999 9999	909 725 7307	to	7399	920 155 4662	to	4687	934 622 8717	to	8999
870 054 4814	to	4899	909 833 0947	to	0999	920 309 9039	to	9199	935 216 0312	to	0399
870 491 4812	to	4849	910 219 8631	to	8699	920 771 5321	to	5399	935 843 2202	to	2247
870 536 5820	to	5829	910 265 1100	to	1199	920 857 5500	to	5899	936 024 8889	to	8899
870 541 7167	to	7239	910 471 7273	to	7299	920 864 3480	to	3499	936 339 4455	to	4499
870 575 8155	to	8999	910 536 2505	to	2599	920 963 4567	to	4599			
870 589 0485	to	0494	910 958 7499	to	7599	921 333 7400	to	7499			
870 691 7060	to	7099	911 140 1000	to	2199	921 477 3762	to	3799			

Missing, Lost, or Stolen Canadian Money Order Forms

Do Not Cash — Upon Receipt, Notify Local Postal Inspectors

Provide this listing to all Postal Service™ employees responsible for accepting and cashing postal money orders. Destroy all interim notices when the numbers listed appear in the *Postal Bulletin*. The new money order serial

numbers consist of the first 9 digits. The tenth digit is a check digit only.

Do not cash outdated money orders **104 151 601 to 692 600 000**. Advise holders to send invalid money orders to Canada Post Corporation, Ottawa, Canada K1A 0B1. Check for altered dollar amounts by holding money orders to the light.

719 869 731	to	9 760	728 382 331	to	2 480	734 797 201	to	7 320	741 764 431	to	4 520
720 227 871	to	7 930	728 702 338	to	2 400	734 939 611	to	9 640	742 178 834	to	8 880
720 227 949	to	7 960	728 915 371	to	5 850	734 950 111	to	0 170	742 325 500	to	5 520
720 368 543	to	8 570	728 953 141	to	3 410	735 120 331	to	0 840	742 325 668	to	5 700
720 392 151	to	2 570	728 954 280	to	4 310	735 283 008	to	3 020	742 408 771	to	8 830
720 556 491	to	6 640	729 169 081	to	9 140	735 293 131	to	3 220	742 512 120	to	2 150
720 558 621	to	8 650	729 363 841	to	3 870	735 635 010	to	5 040	742 684 849	to	4 890
720 575 361	to	5 570	729 682 891	to	3 190	735 783 961	to	3 990	742 839 553	to	9 630
720 590 152	to	0 179	729 838 940	to	9 070	735 803 401	to	3 430	742 913 668	to	3 700
721 638 331	to	9 170	729 839 101	to	9 130	736 005 420	to	5 440	742 917 287	to	7 296
721 815 391	to	5 420	730 077 683	to	7 840	736 366 021	to	6 110	742 921 891	to	1 980
721 969 713	to	9 740	730 109 847	to	9 880	736 624 456	to	4 500	742 983 631	to	3 810
722 072 137	to	2 160	730 373 761	to	3 850	736 670 851	to	1 060	743 020 021	to	0 170
722 378 265	to	8 280	730 501 951	to	2 130	736 767 061	to	7 090	743 206 491	to	6 500
722 413 990	to	4 004	730 519 379	to	9 470	736 767 093	to	7 120	743 235 992	to	6 050
722 764 948	to	4 980	730 569 278	to	9 360	736 982 191	to	2 370	743 940 631	to	0 900
722 825 840	to	5 889	730 711 711	to	1 740	736 982 551	to	2 730	743 978 011	to	8 070
723 153 841	to	3 850	730 722 991	to	3 230	737 110 141	to	0 170	744 234 751	to	4 780
723 237 616	to	7 630	730 845 970	to	5 990	737 185 501	to	5 710	744 499 591	to	9 680
723 331 081	to	1 110	730 888 291	to	8 320	737 317 321	to	7 350	744 626 901	to	6 910
723 496 443	to	6 470	730 927 591	to	7 680	737 517 781	to	7 840	745 388 794	to	8 910
723 967 291	to	7 320	731 307 914	to	7 930	737 628 181	to	8 210	746 446 806	to	6 820
724 655 196	to	5 340	731 402 431	to	2 460	737 634 258	to	4 270	746 818 351	to	8 410
724 711 441	to	1 500	731 407 232	to	7 320	738 361 971	to	1 980	747 245 266	to	5 280
724 711 538	to	1 560	731 588 301	to	8 340	738 447 601	to	7 660	747 364 813	to	4 830
724 793 221	to	3 250	731 767 273	to	7 320	738 648 355	to	8 450	747 501 434	to	1 450
724 908 109	to	8 120	731 781 061	to	1 120	738 849 811	to	9 900	747 739 891	to	0 070
724 937 461	to	7 670	731 837 821	to	7 910	738 892 270	to	2 290	748 148 649	to	8 760
725 163 118	to	3 151	731 841 377	to	1 450	738 997 259	to	7 380	748 259 960	to	9 970
725 202 735	to	2 750	732 018 481	to	8 600	739 161 451	to	1 540	748 565 162	to	5 280
725 398 591	to	8 800	732 067 972	to	8 370	739 219 381	to	9 440	748 874 988	to	5 030
725 464 591	to	4 920	732 188 649	to	8 670	739 740 151	to	0 180	749 137 381	to	7 410
725 475 321	to	5 330	732 193 460	to	3 470	739 793 491	to	3 520	749 190 192	to	0 210
725 711 057	to	1 070	732 201 241	to	1 390	739 793 527	to	3 550	749 685 421	to	5 450
725 738 581	to	8 730	732 220 431	to	0 440	739 942 621	to	2 650	749 846 791	to	6 850
725 981 311	to	1 430	732 355 201	to	5 380	739 999 231	to	9 320	749 993 131	to	3 580
725 987 835	to	7 880	732 472 320	to	2 560	740 011 517	to	1 530	750 071 587	to	1 610
726 060 811	to	0 900	732 541 605	to	1 620	740 030 701	to	0 970	750 408 167	to	8 183
726 391 970	to	2 520	732 572 221	to	2 490	740 261 740	to	1 820	750 438 421	to	8 501
726 484 771	to	4 800	732 586 479	to	6 710	740 265 811	to	6 290	750 743 911	to	4 030
726 493 351	to	5 300	732 994 037	to	4 080	740 299 111	to	9 170	750 779 118	to	9 400
726 504 031	to	4 063	733 163 449	to	3 460	740 299 231	to	9 260	750 910 981	to	1 010
726 504 070	to	4 090	733 297 171	to	7 290	740 329 266	to	9 320	750 960 841	to	0 900
726 504 331	to	4 390	733 446 631	to	7 110	740 889 081	to	9 090	751 296 211	to	6 240
726 563 701	to	4 060	733 474 665	to	4 770	741 010 421	to	0 530	751 539 121	to	9 180
726 599 371	to	9 460	733 704 482	to	4 570	741 113 041	to	3 370	751 541 311	to	1 790
726 626 356	to	6 370	733 751 041	to	1 130	741 373 891	to	4 340	751 757 641	to	7 700
727 182 271	to	2 510	734 009 101	to	9 130	741 452 369	to	2 490	751 936 951	to	7 010
727 416 181	to	6 240	734 290 759	to	0 770	741 492 991	to	3 140	751 951 861	to	1 890
727 481 431	to	1 460	734 389 273	to	9 290	741 553 460	to	3 470	751 999 021	to	9 110
727 749 241	to	9 780	734 440 031	to	0 111	741 764 431	to	4 520	752 139 516	to	9 570

752 182 892	to	2 950	762 324 931	to	4 960	773 112 031	to	2 060	799 177 626	to	7 650
752 206 861	to	7 100	762 439 261	to	9 290	773 125 387	to	5 410	799 854 751	to	5 200
752 295 241	to	5 600	762 524 158	to	4 220	773 179 320	to	9 410	800 044 320	to	4 410
752 731 351	to	1 410	762 584 872	to	4 970	773 202 989	to	3 140	800 211 901	to	2 440
752 767 441	to	7 470	762 593 431	to	3 460	773 208 991	to	9 290	800 427 530	to	7 540
753 008 941	to	9 030	763 155 160	to	5 180	773 231 311	to	1 340	800 872 741	to	2 830
753 194 311	to	4 370	763 178 631	to	8 660	773 348 739	to	8 940	801 349 801	to	9 830
753 620 378	to	0 400	763 506 001	to	6 060	773 348 739	to	8 940	801 676 681	to	7 100
754 013 917	to	3 940	763 522 141	to	2 470	773 575 891	to	5 950	802 967 821	to	7 940
754 161 061	to	1 120	763 717 694	to	7 800	773 852 971	to	3 030	803 217 601	to	7 780
754 358 445	to	8 610	763 826 461	to	6 520	775 373 449	to	3 460	803 729 731	to	9 850
754 410 451	to	0 660	763 900 460	to	0 471	789 257 191	to	7 250	803 747 402	to	7 520
754 438 393	to	8 410	763 900 479	to	0 530	790 448 020	to	8 460	804 138 181	to	8 420
754 493 109	to	3 130	763 917 271	to	7 750	790 597 485	to	7 530	804 428 224	to	8 250
754 664 182	to	4 220	764 125 801	to	5 860	790 911 883	to	1 900	804 682 411	to	2 710
754 816 377	to	6 470	764 284 525	to	4 560	791 057 441	to	7 550	805 272 525	to	2 540
755 487 421	to	7 600	764 526 241	to	6 330	791 239 081	to	9 290	805 523 445	to	3 460
755 592 901	to	3 140	764 601 421	to	1 600	791 374 483	to	4 500	805 745 704	to	5 730
755 790 020	to	0 030	764 650 231	to	0 470	791 387 971	to	8 030	806 452 907	to	2 980
755 791 730	to	1 800	764 984 371	to	4 850	791 447 521	to	7 850	806 744 781	to	4 850
755 926 951	to	7 070	765 003 667	to	3 680	791 451 151	to	1 240	806 982 181	to	2 300
755 934 332	to	4 510	765 042 517	to	2 540	791 500 009	to	0 470	807 764 791	to	4 910
755 957 701	to	8 000	765 194 728	to	4 970	791 771 431	to	1 490	808 089 931	to	9 960
755 962 981	to	3 280	765 387 365	to	7 450	792 004 293	to	4 320	808 656 423	to	6 450
756 035 371	to	5 490	765 541 801	to	2 100	792 018 379	to	8 420	808 753 771	to	3 800
756 301 257	to	1 290	765 638 461	to	8 970	792 070 621	to	0 740	809 189 001	to	9 010
756 371 565	to	1 580	765 647 101	to	7 190	792 145 211	to	5 230	809 886 879	to	6 930
756 876 031	to	6 120	765 813 781	to	4 029	792 391 381	to	1 620	809 890 489	to	0 500
756 876 151	to	6 240	765 879 314	to	9 390	792 452 779	to	2 790	810 323 734	to	3 760
756 970 129	to	0 140	765 954 001	to	4 030	792 772 728	to	2 770	810 367 116	to	7 140
757 059 613	to	9 630	766 120 286	to	0 320	792 903 511	to	3 990	810 526 351	to	6 500
757 078 540	to	8 560	766 125 716	to	5 750	793 282 518	to	2 533	810 806 911	to	6 940
757 086 209	to	6 240	766 158 824	to	8 840	794 041 831	to	2 040	810 807 211	to	7 240
757 240 591	to	0 650	766 388 433	to	8 460	794 397 709	to	7 780	811 423 021	to	3 110
757 277 371	to	7 700	766 509 421	to	9 660	794 581 741	to	2 040	811 517 221	to	7 239
757 291 591	to	2 730	766 572 901	to	3 020	794 592 122	to	2 150	811 721 101	to	1 130
757 964 251	to	4 280	766 748 500	to	8 521	795 032 251	to	2 340	812 025 721	to	5 900
758 067 001	to	7 090	767 024 341	to	4 370	795 796 291	to	6 350	812 093 073	to	3 130
758 105 221	to	5 250	767 326 471	to	6 590	796 070 139	to	0 160	812 100 821	to	0 840
758 324 941	to	5 000	767 332 561	to	2 950	796 143 151	to	3 630	812 465 251	to	5 610
758 593 628	to	3 650	768 009 841	to	9 960	796 159 725	to	9 740	812 918 341	to	8 670
758 709 038	to	9 060	768 011 489	to	1 520	796 169 306	to	9 340	812 918 701	to	8 760
758 744 101	to	4 160	768 177 980	to	7 990	796 373 406	to	3 430	813 050 491	to	0 520
758 850 883	to	0 900	768 391 081	to	1 170	796 602 961	to	3 050	813 073 171	to	3 200
758 860 951	to	1 550	768 661 569	to	1 650	796 708 441	to	8 500	813 398 476	to	8 550
759 152 851	to	2 880	769 000 051	to	0 080	796 886 281	to	6 430	813 713 971	to	4 000
759 740 941	to	1 090	769 050 841	to	0 900	796 901 701	to	2 000	813 858 121	to	8 150
760 004 596	to	4 610	769 159 081	to	9 178	796 975 466	to	5 590	814 789 330	to	9 349
760 118 191	to	8 250	769 737 496	to	7 510	797 272 917	to	2 950	814 984 656	to	4 680
760 155 001	to	5 090	769 778 491	to	8 730	797 519 441	to	9 460	815 016 020	to	6 030
760 378 002	to	8 020	769 827 331	to	7 450	797 519 731	to	0 240	815 199 410	to	9 420
760 692 722	to	2 749	770 216 071	to	6 100	797 535 181	to	5 330	815 240 491	to	0 520
761 055 460	to	5 480	770 723 281	to	3 400	797 646 151	to	6 180	815 755 591	to	5 620
761 169 781	to	9 810	770 790 451	to	0 480	798 040 053	to	0 080	815 755 622	to	5 650
761 504 941	to	5 120	770 915 150	to	5 490	798 055 813	to	5 830	815 806 381	to	6 680
761 516 836	to	6 910	771 455 551	to	5 610	798 055 891	to	5 950	816 126 834	to	6 870
761 613 588	to	3 600	771 609 661	to	9 690	798 326 371	to	6 520	816 156 721	to	6 780
761 688 631	to	8 690	771 932 551	to	2 580	798 339 167	to	9 210	816 580 903	to	0 920
761 805 199	to	5 240	772 057 224	to	7 440	798 562 411	to	2 440	816 945 571	to	5 600
761 826 106	to	6 120	772 162 660	to	3 070	798 632 461	to	2 490	817 253 011	to	3 280
761 881 171	to	1 560	772 718 615	to	8 640	798 807 151	to	7 510	817 763 881	to	4 060
761 975 641	to	5 670	772 940 140	to	0 160	798 944 761	to	5 030	818 330 562	to	0 610
761 975 886	to	5 895	772 970 886	to	0 940	799 118 616	to	8 640	818 459 641	to	9 670
762 304 144	to	4 170	773 009 419	to	9 430	799 133 191	to	3 220	818 926 273	to	6 320

818 950 351	to 0 380	821 903 731	to 3 910	825 472 171	to 2 200	828 539 316	to 9 340
818 962 492	to 2 530	821 927 841	to 7 850	826 042 898	to 2 920	828 539 341	to 9 370
819 032 341	to 2 730	822 505 801	to 5 830	826 226 644	to 6 670	828 732 331	to 2 390
819 127 054	to 7 080	822 703 442	to 3 470	826 582 951	to 3 430	828 807 781	to 7 840
819 278 540	to 8 670	822 900 991	to 1 020	826 720 201	to 0 230	828 830 952	to 0 963
819 544 681	to 4 740	822 925 951	to 6 100	827 005 671	to 5 830	828 939 781	to 0 050
819 928 441	to 8 650	823 284 931	to 4 990	827 287 861	to 7 950	829 002 721	to 2 870
820 034 406	to 4 430	823 293 031	to 3 210	827 291 502	to 1 520	829 005 301	to 5 540
820 070 761	to 1 540	823 556 011	to 6 100	827 575 381	to 5 470	829 080 241	to 0 330
820 191 342	to 1 360	824 078 341	to 8 370	827 609 085	to 9 100	829 160 986	to 1 000
820 274 856	to 4 880	824 156 325	to 6 340	827 619 811	to 9 840	829 176 841	to 6 930
820 600 171	to 0 230	824 511 252	to 1 270	827 883 511	to 3 600	829 471 561	to 1 590
821 172 241	to 2 360	824 588 281	to 8 370	828 160 441	to 0 530	829 561 065	to 1 080
821 229 661	to 9 720	825 140 397	to 0 460	828 376 201	to 6 260	829 566 481	to 6 510
821 229 743	to 9 780	825 409 651	to 9 680	828 441 602	to 1 630	829 569 931	to 9 960

– Criminal Investigations Group, U.S. Postal Inspection Service, 6-29-23

Verifying U.S. Postal Service Money Orders

Follow these steps to cash a Postal Service™ money order:

1. Check that the amount does not exceed the legal limit: \$1,000 for domestic, and \$700 for international Postal Service money orders.
2. Check that the proper security features are present:
 - When held to the light, a watermark of Benjamin Franklin is repeated from top to bottom on the left side.
 - When held to the light, a dark line (security thread) runs from top to bottom with the word “USPS” repeated.
 - When there is discoloration around the dollar amounts, this might indicate the amounts were changed.

These appear in Postal Service Notice 299, *U.S. Postal Money Order Reference Card*, or online at usps.com/shop/money-orders.htm.

3. If the money order seems suspicious, call the U.S. Postal Service Money Order Verification System at 866-459-7822.

Provide this information to local banks and retailers, as they also receive Postal Service money orders for cashing.

– *Delivery and Retail Customer Service Operations, 6-29-23*

Counterfeit Canadian Money Order Forms

Do Not Cash

To be posted and used by retail window employees. As directed, destroy previous notices. Destroy all interim notices when the numbers listed appear in the *Postal Bulletin*.

671,819,086	683,594,542	687,262,503
676,612,640	684,683,610	687,262,525
677,891,039	686,619,878	687,262,526
678,282,493	686,619,886	687,287,578
678,916,031	686,619,887	687,287,581
679,552,215	686,794,382	687,287,582
679,694,334	686,794,426	694,063,898
679,751,983	686,794,427	694,063,899
679,800,207	686,794,431	694,063,980
681,130,536	687,262,502	701,321,725
681,844,376		

– *Criminal Investigations Group, U.S. Postal Inspection Service, 6-29-23*

Toll-Free Number Available to Verify Canadian Money Orders

The Canada Post Corporation has a toll-free number that cashing agents can call to verify the validity of Canadian Postal Money Orders. The number is 800-563-0444.

This toll-free number is printed on the back of the Canadian Postal Money Orders.

– *Criminal Investigations Group, U.S. Postal Inspection Service, 6-29-23*

Other Information

Overseas Military/Diplomatic Mail

Mail addressed to military and diplomatic post offices overseas is subject to certain conditions or restrictions of mailing regarding content, preparation, and handling. The APO/FPO/DPO table outlines these conditions by APO/FPO/DPO ZIP Codes™ through the use of footnoted mailing restrictions codes (see the [Restrictions](#) page following the table).

Acceptance clerks must use the table with the Retail System Software terminal to determine which APO/FPO/DPO ZIP Codes are active and which conditions of mailing apply.

We have eliminated “Not Active” entries from the table below to save space and paper.

APO/FPO/DPO Table

APO/ FPO/ DPO	See Restrictions	APO/ FPO/ DPO	See Restrictions	APO/ FPO/ DPO	See Restrictions	APO/ FPO/ DPO	See Restrictions
09002	A-B-C-C2-F-F3-H-N-R-S-V-Z1	09053	B-C-C2-D-E-F-F3-H-M-R-S-U	09135	A-B-C2-F-F3-H-N-R-S-U-V-Z1	09205	A-B-C-C2-E2-F-F3-M-N-R-S-T-V-X
09003	B-C-C2-D-E-F-F3-H-M-P-R-S-U	09060	B-C-C2-D-E-F1-F3-H-M-N-R-S-U-Z1	09136	B-C-C2-D-E-F-F3-H-M-P-R-S-U	09211	B-C-C2-D-E-F-F3-H-M-P-R-S-U
09004	B-C-C2-D-E-F3-H-M-R-S-U	09067	B-C-C2-D-E-F-F3-H-M-R-S-U	09138	B-C-C2-D-F-F3-H-M-R-S-U	09213	B-C-C2-F1-F3-H-J-L-M-N-R-R1-S-T-U-V-X-Z1
09005	B-C-C2-D-E-F-F3-H-M-P-R-S	09068	B-C-C2-D-E-F3-H-R-S-U-Z1	09140	B-C-C2-D-E-F-F3-H-M-R-S-U	09214	B-C-C2-D-E-F3-H-M-R-S-U-Z1
09006	B-C-C2-D-E-F-F3-H-M-R-S-U	09069	A-B-C-C2-D-E-F3-H-N-R-S-U-V	09142	B-C-C2-D-E-F-F3-H-M-R-S-U	09216	B,C,F1,F3,M,N,R,S,V,Z1
09008	A-B-C-C2-F-F3-H-N-R-S-V-Z1	09079	B-C-C2-D-E-F-F3-H-M-R-S-U	09154	B-C-C2-D-E-F-F3-H-M-R-S-U	09227	B-C-C2-D-E-F-F3-H-M-R-S-U
09009	B-C-C2-D-E-F3-H-M-R-S-U-Z1	09094	B-C-C2-D-F3-H-M-P-R-S-Z1	09160	B-C-C2-F1-F3-H-J-L-M-N-R-R1-S-T-U-V-X-Z1	09240	A-B-C1-C2-F-F3-H-N-R-S-V
09010	B-C-C2-D-E-F-F3-H-M-R-S-U2	09095	B-C-C2-D-E-F-F3-H-M-R-S-U	09170	A-B-C-C2-F1-F3-J-L-M-N-R-R1-S-T-V-X-Z1	09241	A-B-C-C2-F3-N-R-S-U-Z1
09011	B-C-C2-D-E-F3-H-M-R-S	09096	B-C-C2-D-E-F-F3-H-M-R-S-U	09171	A-B-C-C1-C2-E3-F1-F3-J-L-M-N-R-R1-S-T-V-X-Z1	09242	A-B-C-C1-C2-F-F3-H-N-R-S-V
09012	B-C-C2-D-E-F3-H-M-R-S-U-Z1	09101	A-B-C-C2-F-F3-H-N-Q-R-S-V-Z1	09172	B-C-C2-D-E-F-F3-H-M-R-S-U	09250	B-C-C2-D-E-F-F3-H-M-R-S-U
09013	B-C-C2-D-E-F-F1-F3-H-M-R-S-U-Z1	09103	A-B-C-C2-F-F3-H-N-R-S-V-Z1	09173	B-C-C2-D-E-F-F3-H-M-R-S-U	09261	B-C-C2-D-E-F3-H-M-N-R-S-U-V-Z1
09014	B-C-C2-D-E-F3-H-M-P-R-S-U	09104	B-C-C2-D-F3-H-M-R-S-U-Z1	09174	B-C-C2-F1-F3-L-N-R-R1-S-T-V-Z1	09263	B-C-C2-D-E-F3-H-M-R-S-U
09015	A-B-C-C1-C2-F-F1-F3-J-L-M-N-R-R1-S-V-Z1	09107	B-C-C2-D-E-F-F3-H-M-R-S-U	09175	A-B-C-C1-C2-E2-F1-F3-H1-J-L-M-N-R-R1-S-T-V-W-X-Z1	09264	B-C-C2-D-E-F-F3-H-M-R-S-U
09016	B-C-C2-D-E-F1-F3-H-M-R-S-U	09112	B-C-C2-D-E-F-F3-H-M-R-S-U	09176	A-B-C-C2-F1-F3-J-L-M-N-R-R1-S-T-V-X-Z1	09265	B-C-D-F-F1-H-J-L-M-N-R-S-T-U-V-Z1
09017	A-B-C-C2-F-F3-H-N-R-S-V-Z1	09114	B-C-C2-D-E-F-F3-H-M-R-S-U	09177	B-C-C2-D-E-F-F3-H-M-R-S-U	09266	A-B-C2-F3-S-U-R-V-Z1
09018	A-B-C-C2-F-F3-H-N-R-S-V-Z1	09116	A-B-C-C2-F-F3-H-N-R-S-V-Z1	09178	B-C1-C2-E2-F1-F3-I3-L-M-N-R-S-T-V-X-Z1	09276	A-B-F-F3-I3-L-M-N-R-S-T-V-X-Z1
09020	B-C-C2-D-E-F-F3-H-M-R-S-U	09117	A-B-C-C2-F-F3-H-N-R-S-V-Z1	09179	A-B-C-C1-C2-F1-F3-J-L-M-N-R-R1-S-T-V-X-Z1	09277	A-B-E-E1-E2-F1-F3-I3-L-N-R-S-T-V-X-Z1
09021	B-C-C2-D-E-F3-H-M-R-S-U-Z1	09118	A-B-C-C2-F-F1-F3-M-N-R-R1-S-V-Z1	09180	B-C-C2-D-E-F-F3-H-M-R-S-U	09278	A-B-F-F3-I3-L-M-N-R-S-T-V-X-Z1
09034	B-C-C2-D-E-F-F3-H-M-R-S-U	09123	B-C-C2-D-E-F3-H-M-R-S-U-Z1	09186	B-C-C2-D-E-F-F3-H-M-P-R-S-U	09279	A-B-E-E1-F-F3-I3-L-M-N-R-S-T-V-X-Z1
09044	B-C-C2-D-E-F-F3-H-R-S-U	09126	B-C-C2-F3-H-M-P-R-S-Z1	09203	A-B-C-C1-C2-F1-F3-I3-J-L-M-N-R-R1-S-T-V-X-Z1	09280	A-B-C-C1-C2-E-E2-F1-F3-H-I3-L-M-N-R-S-T-V-W-X-Z1
09046	B-C-C2-D-E-F-F3-H-M-R-S-U	09128	B-C-C2-D-E-F-F3-H-M-R-S-U	09204	B-C-F3-M-N-R-S-V-Z1	09281	A-B-C-C1-C2-E2-E3-F1-F3-H-H1-J-L-M-N-R-R1-S-T-V-X-Z1
09049	B-C-C2-D-E-F-F3-H-M-R-S-U	09131	B-C-C2-D-E-F-F3-H-M-R-S-U			09282	A-B-C-C1-C2-E2-E3-F1-F3-H-H1-J-L-M-N-R-R1-S-T-V-X-Z1

APO/ FPO/ DPO	See Restrictions	APO/ FPO/ DPO	See Restrictions	APO/ FPO/ DPO	See Restrictions	APO/ FPO/ DPO	See Restrictions
09283	A-B-C-C2-E-E1-F1-F3-L-M-N-R-S-T-V-X-Z1	09330	A-B-C1-C2-D-E-E2-F-F1-F3-H-H1-M-R-R1-S-V-Z1	09491	A-B-C1-C2-E2-F1-F3-H1-J-L-M-N-R-R1-S-T-V-Z1	09567	B-C-C2-E2-E3-F-F1-F3-R-R1-S-V
09284	A-B-C-C2-F1-F3-I3-L-M-N-R-S-T-V-Z	09333	A-B-C-C1-C2-E2-F-F1-F3-H1-I3-M-N-R-R1-S-V-V1-Z-Z1	09494	B-C-C1-C2-F3-M-R-S-U-Z1	09568	B-C-C2-F-F1-F3-R-R1-S-V
09285	A-B-C-E-E1-F1-F3-H-I3-L-M-N-R-S-T-V-X-Z-Z1	09343	A-B-C1-C2-F-F3-M-N-R-R1-S-V-Z1	09498	B-C-C1-C2-F1-F3-J-L-M-N-R-R1-S-T-V-X-Z1	09569	B-C-C2-E2-E3-F-F1-F3-R-R1-S-V-Z1
09287	B-C2-E1-F1-F3-J-L-N-R-S-T-V-X-Z1	09348	A-B-C1-E2-F-F1-F3-H1-I3-M-N-R-R1-S-T-V-Z-Z1	09501	B-V	09570	B-C-C2-F-F1-F3-R-R1-S-V
09288	A-B-C-C1-C2-E2-F1-F3-H-H1-J-L-M-N-R-R1-S-T-V-X-Z1	09357	A-B-C1-E2-F-F3-H1-M-R-V-Z1	09502	B-V	09573	B-C-C2-E2-E3-F-F1-F3-R-R1-S-V-Z1
09289	B-E2-F1-F3-H1-J-L-M-N-R-R1-S-T-U2-V-X-Z1	09365	A-B-C-C1-E2-F-F3-H1-M-N-R-V-Z1	09503	B-F-F1-R-R1-V	09574	B-F-F1-R-R1-V
09290	A-B-F1-F3-J-L-M-N-R-S-T-U2-V-X-Z1	09366	A-B-C-C1-E2-F-F1-F3-H-H1-M-R-R1-S-V-Z1	09504	B-V	09575	B-C-C2-F-F1-F3-R-R1-S-V
09291	B-C-C1-C2-E2-F1-F3-H1-L-N-R-R1-S-T-V-X-Z1	09401	B-C-C1-C2-F3-M-R-S-U-Z1	09505	B-V	09576	B-C-C2-F-F1-F3-R-R1-S-V
09292	A-B-C-C2-E-E2-E3-F1-F3-H-H1-J-L-M-N-R-R1-S-T-V-X-Z1	09403	B-C-C1-C2-F3-M-R-S-U-Z1	09506	B-V	09577	B-C-C2-F-F1-F3-R-R1-S-V
09293	A-B-C-C1-C2-E-E2-F1-F3-I3-L-M-N-R-S-T-V-X-Z-Z1	09410	C-C2-F-F1-F3-N-R-S-U2	09507	B-V	09578	B-C-C2-F-F1-F3-R-R1-S-V
09294	B-C-C1-C2-E2-F1-F3-H1-L-N-R-R1-S-T-V-X-Z1	09421	B-C-C1-C2-F3-M-R-S-U-Z1	09508	B-C-C2-F-F3-R-R1-S-V	09579	B-C-C2-F-F1-F3-R-R1-S-V
09295	B-C-C1-C2-E2-F1-F3-H1-J-L-M-N-R-R1-S-T-V-X-Z1	09424	B-C-C2-F1-F3-M-N-R-S-U-Z1	09509	B-C-C2-F-F3-R-R1-S-V	09581	B-C-C2-F-F1-F3-R-R1-S-V
09301	A-B-C-C1-C2-E2-F1-F3-H1-I3-L-M-N-R-R1-S-T-U4-V-X-Z-Z1	09447	B-C-C1-C2-F3-M-R-S-U-V-Z1	09510	B-C-C2-F-F3-R-R1-S-V	09582	B-C-C2-F-F1-F3-R-R1-S-V
09304	A-B-C-C1-C2-F-F1-F3-H-M-N-R-S-V-Z-Z1	09454	B-C-C1-C2-F3-M-R-S-U-V-Z1	09511	B-C-C2-F-F3-R-R1-S-V	09583	B-C-C2-F-F1-F3-R-R1-S-V
09305	A-B-C1-E2-F-F1-F3-H1-I3-M-N-R-R1-S-T-V-Z-Z1	09456	B-C-C1-C2-F3-M-N-R-S-U-V-Z1	09512	B-C-C2-F-F1-F3-R-R1-S-V	09586	B-C-C2-F-F1-F3-R-R1-S-V
09306	A-B-C1-E2-F-F1-F3-H1-R-R1-S-U2-V-Z1	09459	B-C-C1-C2-F3-M-R-S-U-Z1	09513	B-C-C2-F-F1-F3-R-R1-S-V	09587	B-C-C2-F-F1-F3-R-R1-S-V
09307	B-C-C2-F-F3-N-R-R1-S-Z1	09461	B-C-C1-C2-F3-M-P-R-S-U-Z1	09514	B-C-C2-F-F1-F3-R-R1-V	09588	B-C-C2-F-F1-F3-R-R1-S-V
09309	A-B-C-C1-C2-E2-F-F1-F3-H1-M-N-R-R1-S-V-Z1	09463	B-C-C1-C2-F3-M-R-S-U-Z1	09516	B-C-C2-F-F1-F3-R-R1-S-V	09589	B-F-F1-F3-R-S-V
09310	A-B-C-C1-E2-F1-F3-H1-I3-L-M-N-R-R1-S-T-U4-V-Z	09464	B-C-C1-C2-F3-R-S-U-Z1	09517	B-C-C2-F-F1-F3-R-R1-S-V	09590	B-C-C2-F-F1-F3-R-R1-S-V
09311	A-B-C1-C2-E2-F-F1-F3-H1-I3-L-M-N-R-R1-S-T-U4-V-Z-Z1	09467	B-C-C2-E-E1-F1-F3-J-L-M-N-R-S-T-V-W-X-Z1	09520	B-F-F1-F3-R-R1-S-V	09591	B-C-C2-F-F1-F3-R-R1-S-V
09312	A-B-C-C1-E2-F1-F3-H1-I3-L-M-N-R-R1-S-T-U-U4-V-X-Z-Z1	09468	B-C-C1-C2-F3-M-R-S-U-Z1	09522	B-F-F1-F3-R-S-V	09592	B-C-C2-F-F1-F3-R-R1-S-V
09315	A-B-C1-E2-F-F3-N-R-R1-S-V-Z1	09469	B-C-C1-C2-F3-R-S-U-Z1	09523	B-C-C2-F-F1-F3-R-R1-S-V	09593	B-F-F1-F3-R-S-V
09316	A-B-C1-E2-F-F1-F3-H1-I3-M-N-R-R1-S-T-V-Z-Z1	09470	B-C-C1-C2-F3-M-R-S-U-Z1	09524	B-C-C2-F-F1-F3-R-R1-S-V	09594	B-C-C1-C2-F-F1-F3-R-R1-S-V
09321	A-B-C1-C2-E2-F-F3-H1-M-N-R-R1-S-V-Z1	09487	A-B-C-C1-C2-E2-F1-F3-I3-L-M-N-R-R1-S-T-V-W-X-Z-Z1	09541	A-B-C-F-F3-M-N-S-V-Z1	09595	B-C-C2-F-F1-F3-I3-J-R-R1-S-V-V1-Z1
		09488	A-B-C-C1-C2-E2-F1-F3-J-L-M-N-R-S-T-V-W-X-Z1	09542	A-B-C-F-F3-M-N-S-V-Z1	09596	B-F-F1-R-R1-V
		09489	A-B-C-C1-C2-E2-F1-F3-L-M-N-R-R1-S-T-V-W-X-Z1	09543	A-B-C-F-F3-M-N-S-V-Z1	09597	B-F-F1-R-R1-V
		09490	A-B-C1-C2-E2-F-F1-F3-H1-J-L-M-N-R-R1-S-T-V-X-Z1	09544	A-B-C-F-F3-M-N-S-V-Z1	09600	B-C-C2-F-F1-F3-R-S-U-Z1
				09545	A-B-C-F-F3-M-N-S-V-Z1	09602	B-C-C2-F-F1-F3-N-R-S-U-V
				09550	B-C-C2-F-F1-F3-R-R1-S-V	09603	B-C-C2-F-F1-F3-R-S-U-V-Z1
				09554	B-C-C2-F-F1-F3-R-R1-S-V	09604	B-C-C2-F-F1-F3-P-R-S-U-V-Z1
				09556	B-F-F1-R-R1-V	09605	B-C-C2-D-F-F3-H-M-R-S-U-V
				09564	B-C-C2-F-F1-F3-R-R1-S-V	09606	B-C-C2-D-F-F3-H-M-R-S-U-V
				09565	B-C-C2-F-F1-F3-R-R1-S-V	09608	B-C-F-F3-N-R-S-U-V-Z1
				09566	B-C-C2-E2-E3-F-F1-F3-R-R1-S-V		

APO/ FPO/ DPO	See Restrictions	APO/ FPO/ DPO	See Restrictions	APO/ FPO/ DPO	See Restrictions	APO/ FPO/ DPO	See Restrictions
09609	B-C-C2-F-F3-N-R-S-U-V-Z1	09712	A-B-C2-F-F3-H-R-S-U-V-Z1	09748	A-B-C-C1-C2-F1-F3-J-L-M-N-R-R1-S-T-V-X-Z1	09813	A-B-C-C1-C2-E2-E3-F1-F3-J-L-N-R-R1-S-T-V-X-Z1
09610	B-C-C2-F-F1-F3-M-R-S-U-V-Z1	09714	B-C-C1-C2-F-F3-M-R-R1-S-U	09749	A-B-C2-F-F3-H-N-R-S-U-V-Z1	09814	B-C-C2-E2-E3-F1-F3-I3-J-L-M-N-R-R1-S-T-V-X-Z1
09613	B-C-C2-F-F3-N-R-S-U-V	09715	B-F-F1-J-L-M-N-R-T-V-Z1	09750	A-B-C-C1-C2-F1-F3-J-L-M-N-R-R1-S-T-V-X-Z1	09815	A-B-C-C2-E-E2-E3-F1-F3-H-H1-J-M-N-R-R1-S-U-V-Z1
09614	A-B-C-C1-C2-E2-F1-F3-H1-J-L-M-N-R-R1-S-T-U-V-X-Z1	09716	B-C-C2-F1-F3-J-L-M-N-R-R1-S-T-V-X-Z1	09751	B-C-C2-D-E-F-F3-H-M-R-S-U	09816	A-B-C-C1-C2-E2-E3-F1-F3-J-L-M-N-R-R1-S-T-V-X-Z1
09618	B-C-C2-F-F3-R-S-U-Z1	09717	A-B-C-C2-F3-M-R-S-V-W-Z1	09752	B-C-C2-D-F-F3-H-R-S-U	09817	A-B-C-C1-C2-E2-E3-F1-F3-H-H1-J-L-M-N-R-R1-S-T-V-X-Z1
09620	B-C-C2-F-F3-R-S-U-V-Z1	09718	B-F-F1-J-L-M-N-R-T-U-V-Z1	09753	A-B-C-C1-C2-D-E-F1-F3-H-M-N-R-S-V-W-Z1	09818	A-B-C-C1-C2-E2-E3-F1-F3-H-H1-J-L-M-N-R-R1-S-T-V-X-Z1
09621	B-C-F-F3-R-U-Z1	09719	B-C-C2-D-F3-M-R-S-U-V-Z1	09754	A-B-C-C2-F-F3-H-N-R-S-V-Z-Z1	09819	A-B-C-C1-C2-E2-F-F1-F3-H-H1-M-R-R1-S-V-Z1
09622	B-C-C2-F-F3-R-S-U-Z1	09720	B-C2-F3-M-R-S-U-V-Z1	09755	A-B-C-C1-C2-D-F-F1-F3-J-L-M-N-Q-R-R1-S-T-V-Z1	09820	A-B-C-C2-F1-F3-H-H1-J-L-M-N-R-R1-S-T-V-X-Z1
09623	B-C-C2-F-F3-R-S-U-V-Z1	09722	A-B-C-C2-F-F3-H-N-R-S-V-Z-Z1	09756	A-B-E3-F-F1-F3-J-L-N-Q-R-R1-S-T-V-Z1	09821	A-B-C-C2-F-F3-N-R-S-V-Z1
09624	B-C-C2-F1-F3-I3-L-M-N-R-R1-S-T-U-V-X-Z1	09723	B-C-C2-F1-F3-J-L-M-N-R-R1-S-T-V-X-Z1	09757	A-B-C-C1-C2-E2-F1-F3-J-L-M-N-R-R1-S-T-V-X-Z1	09822	A-B-C-C2-F-F3-M-R-S-V-Z1
09625	B-C-C2-F-F3-N-R-S-U-Z1	09724	B-C-C1-C2-F-F3-M-R-R1-S-U	09758	A-B-C-C1-C2-E2-F1-F3-J-L-M-N-R-R1-S-T-V-X-Z1	09823	A-B-C-C1-C2-F1-F3-J-L-M-N-R-R1-S-T-V-X-Z1
09627	B-C-C2-F-F3-R-S-U-V-Z1	09725	A-B-C2-F-F3-H-N-Q-R-S-V-V1-Z-Z1	09759	B-C2-F-F1-F3-M-R-R1-S-V-Z-Z1	09824	A-B-C-C2-F-F3-M-R-S-V-Z1
09630	B-C-C2-F-F3-R-S-U-V	09726	B-F-F1-J-L-M-N-R-T-U-V-Z1	09760	A-B-C-C1-E3-F1-F3-J-L-M-N-R-R1-S-T-V-Y-Z1	09825	A-B-C-C1-C2-F1-F3-J-L-M-N-R-R1-S-T-V-X-Z1
09633	B-C-C2-D-F-F3-M-R-S-U-U1-U2-U3-V-Z1	09727	A-B-C-C1-C2-F1-F3-J-L-M-N-R-R1-S-T-V-X-Z1	09761	A-B-C-C1-E3-F1-F3-J-L-M-N-R-R1-S-T-V-Y-Z1	09826	A-B-C-C1-C2-E1-E2-E3-F1-F3-J-L-M-N-R-R1-S-T-V-W-X-Z1
09634	A-B-C2-F-F3-M-N-R-S-V	09728	A-B-C-C1-C2-F1-F3-J-L-M-N-R-R1-S-T-V-X-Z1	09762	A-B-C-C1-E3-F1-F3-J-L-M-N-R-R1-S-T-V-Y-Z1	09827	A-B-C-C1-C2-E1-E2-E3-F1-F3-J-L-M-N-R-R1-S-T-V-W-X-Z1
09636	B-C-C2-F-F3-R-S-U-V-Z1	09729	B-C-C2-F-F3-N-R-R1-S-U-V-Z1	09763	A-B-C-C1-E3-F1-F3-J-L-M-N-R-R1-S-T-V-Y-Z1	09828	A-B-C-C1-C2-F1-F3-I3-L-M-N-R-R1-S-T-V-X-Z1
09642	B-C-C2-F1-F3-J-L-M-N-R-S-T-U-V-X	09730	A-B-C-C1-C2-F1-F3-J-L-M-N-R-R1-S-T-V-X-Z1	09764	A-B-C-C1-E3-F1-F3-J-L-M-N-R-R1-S-T-V-Y-Z1	09829	B-C-N-R-V-Z1
09643	B-C-C2-F3-M-R-S-U-V-Z1	09731	A-B-C-C1-C2-F1-F3-J-L-M-N-R-R1-S-T-V-X-Z1	09765	A-B-C-C1-E3-F1-F3-J-L-M-N-R-R1-S-T-V-Y-Z1	09830	B-C-F-F1-F3-J-L-M-N-R-R1-S-T-V-Z1
09645	B-C-C1-E1-E2-F-F1-F3-M-R-S-U-X-Z1	09732	B-F-F3-N-S-V-Z-Z1	09766	A-B-C-C1-E3-F1-F3-J-L-M-N-R-R1-S-T-V-Y-Z1	09831	B-C-C1-C2-F1-F3-J-L-M-N-R-R1-S-T-V-X-Z1
09647	B-C2-F1-F3-M-N-R-S-U-Z1	09733	B-F-F3-N-R-S-V-Z	09767	A-B-C-C1-E3-F1-F3-J-L-M-N-R-R1-S-T-V-Y-Z1	09832	A-B-C-C1-C2-E2-E3-F1-F3-H-H1-J-M-N-R-R1-S-V-Z1
09648	B-C2-F3-N-R-S-U-V-Z1	09734	A-B-C-C1-C2-F1-F3-I3-J-L-M-N-R-R1-S-T-V-X-Z1	09768	A-B-C-C1-E3-F1-F3-J-L-M-N-R-R1-S-T-V-Y-Z1	09833	B-C-C2-E2-E3-F-F1-F3-R-R1-S-U-Z1
09649	B-C2-F3-N-R-S-U-Z1	09735	B-F3-N-R-S-V-Z-Z1	09769	A-B-C-C1-E3-F1-F3-J-L-M-N-R-R1-S-T-V-Y-Z1	09834	A-B-C-C1-C2-F1-F3-J-L-M-N-R-R1-S-T-V-X-Z1
09701	A-B-C-C1-C2-F1-F3-J-L-M-N-R-R1-S-T-V-X-Z1	09736	A-B-C-C1-C2-F1-F3-J-L-M-N-R-R1-S-T-V-X-Z1	09770	A-B-C-C1-E3-F1-F3-J-L-M-N-R-R1-S-T-V-Y-Z1	09835	B-E2-E3-F1-F3-R-S-V-Z1
09702	B-C-C2-F-F1-M-R-R1-S-U	09737	A-B-C-C1-C2-F1-F3-I3-J-L-M-N-R-R1-S-T-V-W-X-Y-Z-Z1	09771	A-B-C-C1-E3-F1-F3-J-L-M-N-R-R1-S-T-V-Y-Z1	09836	B-C-C2-E2-E3-F-F1-F3-R-S-U-Z1
09704	B-C-C2-F-F1-F3-R-R1-S-U2-V	09738	A-B-C-C1-C2-F1-F3-J-L-M-N-R-R1-S-T-V-X-Z1	09772	A-B-C-C1-E3-F1-F3-J-L-M-N-R-R1-S-T-V-Y-Z1	09837	A-B-C-C1-C2-E3-F1-F3-J-L-M-N-R-R1-S-T-V-X-Z1
09705	B-C-C1-C2-F1-F3-M-R-R1-S-U	09739	A-B-C-C1-C2-F1-F3-J-L-M-N-R-R1-S-T-V-X-Z1	09773	A-B-C-C1-E3-F1-F3-J-L-M-N-R-R1-S-T-V-Y-Z1	09838	B-E2-E3-F1-F3-R-S-V-Z1
09706	B-C-C2-F3-M-N-R-S-U-V-Z1	09740	A-B-C-C1-C2-F1-F3-I3-J-L-M-N-R-R1-S-T-V-X-Z1	09774	A-B-C-C1-E3-F1-F3-J-L-M-N-R-R1-S-T-V-Y-Z1	09839	B-C-C2-E2-E3-F-F1-F3-R-R1-S-U-Z1
09707	B-C-C2-F1-F3-J-L-M-N-R-R1-S-T-V-X-Z1	09741	A-B-C-C1-C2-E2-F1-F3-H1-J-L-M-N-R-R1-S-T-V-W-X-Y-Z1	09775	A-B-C-C1-E3-F1-F3-J-L-M-N-R-R1-S-T-V-Y-Z1	09840	A-B-C-C1-C2-E3-F1-F3-J-L-M-N-R-R1-S-T-V-X-Z1
09708	B-C-C1-C2-F-F3-M-R-R1-S-U	09742	A-B-C-C1-C2-F1-F3-J-L-M-N-R-R1-S-T-V-X-Z1	09776	A-B-C-C1-E3-F1-F3-J-L-M-N-R-R1-S-T-V-Y-Z1	09841	A-B-C-C1-C2-E3-F1-F3-J-L-M-N-R-R1-S-T-V-X-Z1
09709	B-C-C1-C2-E2-F1-F3-H-H1-J-L-N-R-R1-S-T-V-X-Z1	09743	A-B-C-C2-F-F3-H-N-R-S-V-Z-Z1	09777	A-B-C-C1-E3-F1-F3-J-L-M-N-R-R1-S-T-V-Y-Z1	09842	A-B-C-C1-C2-E3-F1-F3-J-L-M-N-R-R1-S-T-V-X-Z1
09710	B-C-C1-F-F1-J-L-M-N-R-R1-T-U-V-Z1	09744	A-B-C-C1-C2-F1-F3-J-L-M-N-R-R1-S-T-V-X-Z1	09778	A-B-C-C1-E3-F1-F3-J-L-M-N-R-R1-S-T-V-Y-Z1	09843	A-B-C-C1-C2-E3-F1-F3-J-L-M-N-R-R1-S-T-V-X-Z1
09711	A-B-C-C2-E2-F-F1-F3-M-N-R-S-T-V-X	09745	A-B-C2-F-F1-F3-M-N-R-R1-S-V-Z1	09779	A-B-C-C1-E3-F1-F3-J-L-M-N-R-R1-S-T-V-Y-Z1	09844	A-B-C-C1-C2-F1-F3-J-L-M-N-R-R1-S-T-V-X-Z1

APO/ FPO/ DPO	See Restrictions	APO/ FPO/ DPO	See Restrictions	APO/ FPO/ DPO	See Restrictions	APO/ FPO/ DPO	See Restrictions
09845	A-B-C-C1-C2-E3-F1-F3-J-L-M-N-R-R1-S-T-V-X-Z1	09902	A-B-C1-C2-E2-F-F3-H1-M-R-R1-S-V-Z1	34032	B-C-C1-C2-F1-F3-J-L-M-N-R-R1-S-T-V-X-Z1	96201	A-B-F-F1-F3-M-R-S-U
09846	A-B-C-C1-C2-F1-F3-J-L-M-N-R-R1-S-T-V-X-Z1	09903	B-C1-E2-F1-F3-S-V-Z1	34033	B-C-C1-C2-F1-F3-I3-L-M-N-R-S-T-V-X-Z1	96202	A-B-C-C2-F-F1-F3-M-R-S
09847	B-C-C2-F1-F3-J-L-M-N-R-R1-S-T-V-X-Z1	09904	B-C1-E2-F1-F3-S-V-Z1	34034	B-C-C1-C2-F1-F3-I3-L-M-N-R-R1-S-T-V-X-Z1	96203	A-B-F-F1-F3-M-R-S-U
09848	A-B-C2-F-F3-M-R-S-V-Z1	09908	A-B-C2-F-F1-F3-N-R-R1-S-V-Z1	34035	B-C-C1-C2-F1-F3-H-J-L-M-N-R-R1-S-T-V-X-Z1	96204	A-B-C-C2-F-F1-F3-M-R-S-U-U2
09853	B-C1-C2-E2-F-F1-F3-H1-N-R-R1-S-U2-V-Z1	09909	A-B-C2-F-F1-F3-N-R-R1-S-V-V1-Z1	34036	B-C-C1-C2-F1-F3-J-L-M-N-R-R1-S-T-V-X-Z1	96205	B-C-C2-F-F1-F3-M-P-R-S-U
09854	A-B-C-C1-C2-F1-F3-J-L-M-N-R-R1-S-T-V-X-Z1	09974	B-F1-F3-J-L-M-N-R-S-T-U2-V-X-Z1	34037	B-C-C1-C2-F1-F3-H-J-L-M-N-R-R1-S-T-V-X-Z1	96206	A-B-C-C2-F-F1-F3-M-R-S-U
09855	A-B-C-C1-C2-E2-F-F1-F3-H1-M-R-R1-S-U2-V-Z1	09975	B-F1-F3-I3-L-M-N-R-S-T-U2-V-X-Z1	34039	B-C-C1-C2-F1-F3-J-L-M-N-R-R1-S-T-V-X-Z1	96207	A-B-F-F1-F3-M-R-S-U-V
09857	A-B-C-C2-E2-F1-F3-I3-L-M-N-R-R1-S-T-V-X-Z1	09976	B-F1-F3-J-L-M-N-R-S-T-U2-V-X-Z1	34041	B-C-C1-C2-F1-F3-J-L-M-N-R-R1-S-T-V-X-Z1	96208	A-B-C-C2-F-F1-F3-M-R-S-U
09858	A-B-C-C1-C2-E2-E3-F1-F3-H-H1-J-M-N-R-R1-S-U-V-Z1	09977	B-F1-F3-J-L-M-N-R-S-T-U2-V-X-Z1	34042	A-B-C-F-F1-F3-M-N-R-S-U-V-W-Z1	96209	A-B-C-C1-C2-F1-F3-J-L-M-N-R-S-T-U-V-X-Z1
09859	B-C-C1-C2-E2-E3-F-F1-F3-H1-R-R1-S-U-Z1	09978	B-C-C2-D-E1-F-F1-F3-H-H1-M-N-R-R1-S-T-X-Z1	34055	B-C-C1-C2-F1-F3-J-L-M-N-R-R1-S-T-V-X-Z1	96210	A-B-C-C1-C2-F1-F3-I3-L-M-N-R-R1-S-T-V-X-Z1
09860	A-B-C-C2-F1-F3-J-L-M-N-R-R1-S-T-V-X-Z1	09980	B-C-C1-C2-F1-F3-J-L-M-N-R-R1-S-T-V-X-Z1	34058	B-C2-F-F1-F2-F3-R-R1-S-V-Z1	96212	B-F-F1-F2-H-M-W-Z1
09862	A-B-C-C2-F1-F3-I3-L-M-N-R-R1-S-T-V-X-Z1	09981	B-C-C1-C2-F1-F3-J-L-M-N-R-R1-S-T-V-X-Z1	34060	B-C-C1-C2-E2-F1-F3-J-L-M-N-R-R1-S-T-V-X-Z1	96213	A-B-C-C2-F1-F3-N-R-S
09864	A-B-C-C1-C2-E2-F1-F3-L-M-N-R-R1-S-T-V-W-X-Z1	09982	B-C-C1-C2-F1-F3-J-L-M-N-R-R1-S-T-V-X-Z1	34066	B-C-C1-C2-F1-F3-I3-J-L-M-N-R-R1-S-T-V-X-Z1	96214	A-B-C-C2-F1-F3-N-R-S-U
09867	A-B-C-C1-C2-E2-F1-F3-L-M-N-R-R1-S-T-V-W-X-Z1	09983	B-C-C1-C2-F1-F3-J-L-M-N-R-R1-S-T-V-X-Z1	34067	B-C-C1-C2-F1-F3-J-L-M-N-R-R1-S-T-V-X-Z1	96218	A-B-C-C2-F-F1-F3-M-R-S-U
09869	A-B-C-C1-C2-E2-F1-F3-L-M-N-R-R1-S-T-V-W-X-Z1	09984	B-C-C1-C2-F1-F3-J-L-M-N-R-R1-S-T-V-X-Z1	34068	B-C-C1-C2-F1-F3-J-L-M-N-R-R1-S-T-V-X-Z1	96224	A-B-C-C2-F-F1-F3-M-R-S-U
09870	A-B-C-C1-C2-E2-F1-F3-H1-I3-L-M-N-R-R1-S-T-U4-V-X-Z1	34001	A-B-C-C1-C2-F1-F3-J-L-M-N-R-R1-S-T-V-X-Z1	34069	B-C-C1-C2-F1-F3-I3-J-L-M-N-R-R1-S-T-V-X-Z1	96251	A-B-C-C2-F-F1-F3-M-R-S-U
09873	A-B-C-C1-C2-E2-F1-F3-H1-I3-L-M-N-R-R1-S-T-U4-V-X-Z1	34002	B-C-C1-C2-F1-F3-J-L-M-N-R-R1-S-T-V-X-Z1	34072	B-C-C2-F1-F3-J-L-M-N-R-R1-S-T-V-X-Z1	96257	A-B-F-F1-F3-S-U
09874	A-B-C-C1-C2-E2-F1-F3-H1-I3-L-M-N-R-R1-S-T-U4-V-X-Z1	34004	B-C-C1-C2-F1-F3-J-L-M-N-R-R1-S-T-V-X-Z1	34078	B-F-F1-F3-N-R-S-V-Z1	96258	B-C-C2-F-F1-F3-M-P-R-S
09875	A-B-C1-C2-E2-F-F1-F3-H1-I3-L-M-N-R-R1-S-T-U4-V-Z1	34007	B-F-F1-H-J-M-N-R-R1-V-Z1	34080	B-F-F1-R-R1-V	96260	A-B-C-C2-F-F1-F3-M-R-S-U
09877	A-B-C-C2-E-E2-E3-F1-F3-H-H1-J-M-N-R-R1-S-U-V-Z1	34008	B-C-C1-C2-D-E1-F1-F3-H-H1-J-L-M-N-R-R1-S-T-V-X-Z	34081	B-F-F1-R-R1-V	96262	A-B-C2-F-F1-F3-R-S-U-V-Z1
09880	A-B-C1-C2-E2-F-F1-F3-H1-J-L-N-R-R1-S-T-U-V-Z1	34009	B-C2-F-F1-F3-R-S-V	34082	B-F-F1-R-R1-V	96264	A-B-C-C2-F1-F3-R-S-U
09892	A-B-C-C1-C2-E2-F1-F3-J-L-M-N-R-R1-S-T-V-X-Z1	34010	B-C2-F-F1-F3-R-S-V	34083	B-F-F1-R-R1-V	96266	A-B-C-C2-F1-F3-R-S-U
09895	A-B-C1-C2-E2-F-F1-F3-J-L-M-N-R-T-V-W-Z1	34011	B-C-C1-C2-E2-F1-F3-J-L-M-N-R-R1-S-T-V-X-Z1	34084	B-F-F1-R-R1-V	96269	A-B-C-C2-F1-F2-F3-R-S-U-Z1
09898	B-C-C1-C2-E2-F-F1-F2-H1-N-R-R1-S-U2-V-Z1	34020	B-C-C1-C2-F1-F3-J-L-M-N-R-R1-S-T-V-X-Z1	34085	B-C-C1-C2-E2-E3-F-F1-F3-H1-J-R-R1-S-T-V-V1	96271	B-C-C2-F-F1-F3-M-P-R-S
		34021	B-C-C1-C2-F1-F3-J-L-M-N-R-R1-S-T-V-X-Z1	34086	B-C-C1-C2-E2-E3-F-F1-F3-H1-J-R-R1-S-T-V-V1	96273	B-C-C2-F-F1-F3-M-R-S-U
		34022	B-C-C1-C2-F1-F3-J-L-M-N-R-R1-S-T-V-X-Z1	34087	B-C-C2-E2-F-F1-F3-R-R1-S-V	96275	A-B-F-F1-F3-M-R-S-U
		34023	B-C-C1-C2-F1-F3-J-L-M-N-R-R1-S-T-V-X-Z1	34088	B-C-C2-F-F1-F3-R-R1-S-V	96276	A-B-C-C2-F1-F3-R-S
		34024	B-C-C1-C2-F1-F3-J-L-M-N-R-R1-S-T-V-X-Z1	34089	B-C-C2-F-F1-F3-R-R1-S-V	96278	A-B-C-C2-F1-F3-R-S-U
		34025	B-F-F1-F3-J-L-M-N-R-R1-T-V-Z1	34090	B-C-C2-F-F1-F3-R-R1-S-V	96283	A-B-F-F1-F3-S-U
		34030	B-C-C1-C2-F1-F3-J-L-M-N-R-R1-S-T-V-X-Z1	34091	B-C-C2-E2-E3-F-F1-F3-R-R1-S-V-Z1	96284	A-B-C-C2-F-F1-F3-M-R-S-U
		34031	B-C-C1-C2-F1-F3-J-L-M-N-R-R1-S-T-V-X-Z1	34092	B-C-C2-F-F1-F3-R-R1-S-V-Z1	96297	A-B-C-C2-F-F1-F3-M-R-S-U
				34093	B-C-C2-F-F1-F3-R-R1-S-V	96300	A-B-F3-M-R-S-V-Z1
				34094	B-F-F1-F3-R-R1-S-V	96301	A-B-C-C2-F-F3-M-N-R-S-U2-W
				34095	B-F-F1-R-R1-V	96303	B-C-C1-C2-F1-F3-H-J-L-M-N-R-S-T-V-W-X-Z1
						96306	B-F-F1-F2-F3-H-M-R-S-W-Z1

APO/ FPO/ DPO	See Restrictions	APO/ FPO/ DPO	See Restrictions	APO/ FPO/ DPO	See Restrictions	APO/ FPO/ DPO	See Restrictions
96309	B-C-C2-F-F1-F3-M-N-R-S-V-W	96401	B-C-F-F3-N-R-S-V-V1-Z1	96555	A-B-C-C2-F-F1-F3-M-R-S-U2-V	96661	B-C-C2-F-F1-F3-R-R1-S-V
96310	B-C-C2-F-F3-M-R-S-W	96502	A-B-C-C1-C2-F-F1-F3-J-M-N-R-R1-S-T-U-V	96557	A-B-C-C2-F-F1-F3-M-R-S-U2-V	96662	B-C-C2-F-F1-F3-R-R1-S-V
96311	B-C-C2-F-F3-M-R-S-W	96504	A-B-C-C1-C2-F1-F3-I3-L-M-N-R-R1-S-T-V-W-X-Z-Z1	96562	A-B-C-C1-C2-D-E2-E3-F1-F3-H-H1-I3-L-M-N-R-R1-S-T-V-X-Z-Z1	96663	B-C-C2-F-F1-F3-R-R1-S-V
96315	B-C-C2-F-F3-M-R-S-W	96505	A-B-C-C1-C2-F1-F3-I3-L-M-N-R-R1-S-T-V-W-X-Z-Z1	96577	A-B-C2-F-F3-H-M-N-R-S-U	96664	B-C-C2-F-F1-F3-R-R1-S-V
96319	B-C-C2-F3-M-R-S-W	96506	B-C-C2-D-E1-E2-F-F1-F3-H-H1-M-N-R-S-T-Z1	96578	B-C-C2-F1-F3-H-J-N-R-S	96665	B-C-C2-F-F1-F3-R-R1-S-V
96321	B-F-F1-F2-F3-H-M-R-S-W-Z1	96507	A-B-C-C1-C2-F1-F3-H-J-L-M-N-R-S-T-V-X-Z1	96595	B-F-F3-R-S-V-Z1	96666	B-C-C2-F-F1-F3-R-R1-S-V
96322	B-F-F1-F2-F3-H-M-R-S-W-Z1	96510	B-I3-N-V	96598	B-C2-F3-I3-N-R-S-V-V1	96667	B-C-C2-F-F1-F3-R-R1-S-V
96326	B-C-C2-F-F3-M-R-S-W	96511	B-I3-N-V	96599	B-C2-F3-N-R-S-V	96668	B-C-C2-F-F1-F3-R-R1-S-V
96328	B-C-C2-F3-M-R-S-W	96515	B-C-D-E1-F-F1-F3-H-H1-M-N-R-S-T-Z1	96601	B-V	96669	B-C-C2-F-F1-F3-R-R1-S-V
96331	A-B-C-C2-F-F1-F3-J-L-M-N-R-S-U2-W	96516	B-C-C2-D-E1-E2-F-F1-F3-H-H1-M-N-R-S-T-Z1	96602	B-V	96670	B-C-C2-F-F1-F3-R-R1-S-V
96336	B-C-C2-F3-M-R-S-V-W	96517	B-C-D-E1-E2-F-F1-F3-H-H1-M-N-R-T-U-V-Z1	96603	B-V	96671	B-C-C2-F-F1-F3-R-R1-S-V
96337	B-C2-F-F1-F3-M-R-R1-S-W	96520	B-F-N-U3-V	96604	B-V	96672	B-C-C2-F-F1-F3-R-R1-S-V
96338	A-B-C-C2-F-F3-M-R-S-U2-W	96521	B-C-C1-C2-F-F1-F3-J-L-M-N-R-R1-S-T-V-X-Z1	96605	B-V	96673	B-C-C2-F-F1-F3-R-R1-S-V
96339	A-B-C-C2-F-F3-M-N-R-S-U2-W	96530	A-B-C-C1-C2-F1-F3-H-H1-J-L-M-N-R-R1-S-T-V-X-Z1	96606	B-C-C2-F-F3-M-R-S-V-W	96674	B-C-C2-F-F1-F3-R-R1-S-V
96343	A-B-F-F3-M-P-R-S-U2	96531	A-B-C-C2-F-F1-F3-H-M-N-R-S-U-V	96607	B-V	96675	B-C-C2-F-F1-F3-R-R1-S-V
96346	B-F-F1-F2-F3-H-M-R-S-W-Z1	96532	A-B-C-C1-C2-F1-F3-H-J-L-M-N-R-R1-S-T-V-X-Z1	96608	B-E2-F-H1-R1-U2-V-Z1	96677	B-C-C2-F-F1-F3-R-R1-S-V
96347	B-C2-F-F1-F2-F3-H-M-R-S-W-Z1	96534	A-B-C-C2-F-F1-F2-F3-R-R1-S-U-V-Z1	96609	B-E2-F-H1-R1-U2-V-Z1	96678	B-C-C2-F-F1-F3-R-R1-S-V
96349	B-C-C2-F-F1-F2-F3-H-M-R-S-Z1	96535	A-B-C-C1-C2-F1-F3-J-L-M-N-R-R1-S-T-V-X-Z1	96610	B-C-C2-F-F3-H1-R-R1-S-U2-V-Z1	96679	B-C-C2-F-F1-F3-R-R1-S-V
96350	B-F-F1-F2-F3-H-M-R-S-W-Z1	96537	B-V-Z1	96611	B-C-C2-F-F3-H1-R-R1-S-U2-V-Z1	96681	B-V
96351	B-C-C2-F-F1-F2-F3-H-M-R-S-Z1	96540	B-F1-F2-F3-S-V-Z1	96612	B-C-C2-F-F3-H1-R-R1-S-U2-V-Z1	96682	B-C-C2-F-F1-F3-R-R1-S-V
96362	B-C2-F-F1-F2-F3-H-M-R-S-W-Z1	96542	B-C-C2-F-F1-F2-F3-R-S	96613	B-C-C2-F-F3-H1-R-R1-S-U2-V-Z1	96683	B-C-C2-F-F1-F3-R-R1-S-V
96365	B-C-C2-F3-M-R-S-W-V	96543	B-C-C2-F-F1-F2-F3-P-R-S	96615	B-F-F1-R-R1-V	96686	B-C-C2-F-F1-F3-R-R1-S-V
96367	B-C-C2-F3-L-M-R-S-W	96544	A-B-C2-F-F1-F3-H-M-R-S-U	96616	B-C2-F-F1-F3-R-R1-S-V	96691	B-C-C2-F-F1-F3-R-R1-S-V
96368	B-C-C2-F3-M-R-S-W	96548	A-B-C-C1-C2-F1-F3-H-J-L-M-N-R-R1-S-T-V-X-Z1	96619	B-C-C2-F1-F3-R-S-V	96692	B-C-C2-F-F1-F3-R-R1-S-V
96370	B-F-F1-F2-H-M-W-Z1	96549	A-B-C-C1-C2-F1-F3-H-J-L-M-N-R-R1-S-T-V-X-Z1	96620	B-C-C2-F-F1-F3-R-R1-S-V	96693	B-C-C2-F-F1-F3-R-R1-S-V
96371	B-C-C2-F-F3-M-R-S-W	96550	A-B-H-M-N-U-V-Z1	96628	B-C-C2-F-F1-F3-R-R1-S-V	96694	B-C-C2-F-F1-F3-I3-J-R-R1-S-V-Z
96372	B-C-C2-F-F3-M-R-S-W	96551	A-B-C-C1-C2-F1-F3-H-J-L-M-N-R-R1-S-T-V-X-Z1	96629	B-C-C2-F-F1-F3-R-R1-S-V	96695	B-C-C2-F-F1-F3-R-R1-S-V
96373	B-C-C2-F-F3-M-R-S-W	96552	B-Z1	96632	B-C-C2-F-F1-F3-R-R1-S-V	96696	B-F-F1-R-R1-V
96374	B-C-C2-F-F3-M-R-S-W	96553	A-B-C-C2-F-F1-F3-H-M-N-R-S-U	96633	B-V	96698	B-C-C2-F-F1-F3-R-R1-S-V
96375	B-C-C2-F-F3-M-R-S-W	96554	A-B-C-C1-C2-F1-F3-H-J-L-M-N-R-R1-S-T-V-X-Z1	96641	B-V		
96376	B-C-C2-F-F3-M-R-S-W			96642	B-V		
96377	B-C-C2-F-F3-M-R-S-W			96643	B-F-F1-F3-R-R1-S-V		
96378	B-C-C2-F-F3-M-R-S-W			96644	B-V		
96379	B-C-C2-F-F3-M-R-S-W			96645	B-V		
96380	B-C-C2-F-F3-M-R-S-W			96649	B-C-C2-F-F1-F3-R-R1-S-V		
96382	B-C-C2-F-F3-M-R-S-W			96650	B-F-F1-R-R1-V		
96384	B-C-C2-F-F3-M-R-S-W			96657	B-C-C2-F-F1-F3-R-R1-S-V		
96385	B-C-C2-F-F3-M-R-S-W			96660	B-C-C2-F-F1-F3-R-R1-S-V		
96386	B-C-C2-F-F3-M-R-S-W						
96387	B-C-C2-F-F3-M-R-S-W						
96388	B-C-C2-F-F3-M-R-S-W						
96389	B-C-C2-F-F3-M-R-S-W						

RESTRICTIONS

LEGEND

PS Form 2976, *Customs — CN 22 (Old C 1) and Sender's Declaration*
 PS Form 2976-A, *Customs Declaration and Dispatch Note*
 PS Form 2976-B, *Priority Mail Express International Shipping Label and Customs Form*

ATF = Bureau of Alcohol, Tobacco, Firearms, and Explosives
 Box C = Department of State (DOS) contractor personnel
 Box R = Retired military personnel
 DPO = Diplomatic Post Office
 MPO = Military Post Office
 PACT = Prevent All Cigarette Trafficking Act
 PAL = Parcel Airlift
 PMEMS = Priority Mail Express Military Service
 PUB 52 = Publication 52, *Hazardous, Restricted, and Perishable Mail*
 SAM = Space Available Mail
 USDA = United States Department of Agriculture

Note: Mail order catalogs are prohibited as SAM or PAL mail.

A. Securities, currency, or precious metals, including in their raw, unmanufactured state, are prohibited. Official Mail shipments are exempt from this restriction.

A1. Reserved for future use.

A2. Reserved for future use.

B. Other than for PMEMS and the exceptions listed below, a customs declaration PS Form 2976 or PS Form 2976-A is required for all items weighing 16 ounces or more, and for all items (regardless of weight) containing potentially dutiable mail contents (e.g., merchandise or goods) addressed to or from this ZIP Code. Other than the exceptions listed below, all PMEMS mailpieces (regardless of mail contents or weight) addressed to or from this ZIP Code must bear a properly completed PS Form 2976-B. The surface area of the address side of the mailpiece must be large enough to contain the applicable customs declaration. The following exceptions apply to known mailers, who for this purpose are defined as follows:

- Business mailers who enter volume mailings through business mail entry units or other bulk mail acceptance locations, pay postage through advance deposit accounts, use permit imprints for postage payment, and submit completed postage statements at the time of entry that certify that the mailpieces contain no dangerous materials that are prohibited by postal regulations. Such business mailers are exempt from providing customs documentation on non-dutiable letters and printed matter.
- All federal, state, and local government agencies whose mailings are regarded as "Official Mail." Such agencies are exempt from providing customs documentation, except for any items addressed to an MPO or DPO to which restriction "B2" applies.

B2. All federal, state, and local government agencies must complete customs documentation when sending potentially dutiable mail addressed to or from this MPO or DPO.

C. Cigarettes and other tobacco products, including tobacco leaves, chewing and pipe tobacco, snuff, and cigars are prohibited, including those that are authorized in Publication 52 under PACT.

C1. Obscene and horror articles, images, prints, paintings, cards, films, videotapes, comic books, etc., are prohibited.

C2. E-cigarettes and related products (e.g., nicotine liquids, e-liquids, parts, or supplies) are prohibited.

D. Coffee is prohibited.

E. Medicines (prescription, over-the-counter, vitamins, and supplements) are prohibited when mailed to individuals for human or animal use. This prohibition does not apply when medicines are sent as Official Mail only between specifically designated agencies such as pharmaceutical distributors, hospitals, clinics, and pharmacies.

E1. Mailers are responsible to ensure that all medicines and vaccines conform to host nation laws.

E2. Any matter depicting nude or seminude persons, pornographic, or sexual items are prohibited. Non-authorized political materials are prohibited. Religious materials contrary to the Islamic faith are prohibited in bulk quantities, but individual items for the personal use of the addressee are permissible.

E3. Radio transceivers, cordless/cellular telephones, global positioning systems, scanners, base stations, and handheld transmitters are prohibited.

F. Firearms of any type are prohibited, except firearms mailed to or by official U.S. government agencies. This restriction does not apply to firearms mailed from this MPO ZIP Code, provided ATF and USPS regulations are met. Antique firearms do not require an ATF form.

F1. Weapons of any type are prohibited.

F2. Mailing firearms to or from this MPO ZIP Code is restricted to one shotgun and one single shot .22 caliber rifle per individual.

F3. Replica weapons and inert explosive devices (such as grenades) and weapons parts are prohibited.

G. Parcels of any class are prohibited.

H. Meats, including preserved meats, bones, skin, hair, feathers, horns or hoofs of hoofed animals, and wool samples whether hermetically sealed or not, are prohibited.

H1. Pork or pork by-products are prohibited.

I. Reserved for future use.

I1. Reserved for future use.

I2. Reserved for future use.

I3. Mail of all classes must fit in a mail sack. Mail may not exceed the following dimensions:

- Maximum length 27 inches.
- Maximum width 14 inches.
- Maximum height 14 inches.

J. Standard Post and Parcel Select parcels may not exceed 108 inches in length and girth combined.

K. Reserved for future use.

L. All Official Mail is prohibited.

M. Fruits, vegetables, live animals, and live plants are prohibited.

N. Registered Mail service is prohibited.

O. Reserved for future use.

P. Official Mail only.

Q. Mail may not exceed 66 pounds, and size is limited to 42 inches maximum length and 72 inches maximum length and girth combined.

R. All alcoholic beverages, including those mailable under Publication 52, Part 421, are prohibited.

R1. Materials used in the production of alcoholic beverages (i.e., distilling material, hops, malts, yeast, etc.) are prohibited.

S. Synthetic cannabinoids used to stimulate the central nervous system commonly known as "synthetic marijuana," "K2," or "Spice" are prohibited.

T. Mailings of household shipments and case lots of food to or from an MPO require military transportation office approval prior to mailing. Mailings to or from a DPO require pre-approval from the Diplomatic Pouch and Mail Director.

U. Mail addressed to Retirees (Box R) is limited to 16 ounces and up to a 90-day supply of TRICARE medications. This restriction does not apply to mail endorsed "Free Matter for the Blind or Handicapped."

U1. Mail is limited to First-Class Mail items, including audio and video media, weighing 13 ounces or less. This limitation does not apply to Official Mail.

U2. Retirees (Box R) are not authorized mail service.

U3. Reserved for future use.

U4. Mail addressed to Box C is limited to 2 lbs.

V. PMEMS is not available.

V1. Electronic Delivery status information for Extra Services is not available on *USPS.com*. Manual record of delivery may be available upon request.

W. Hermetically sealed packages of meat products bearing USDA certification, such as dried beef, salami, and sausage, may be mailed. 200 grams of tobacco per parcel are permitted duty free.

X. Cremated remains are prohibited.

Y. Mail is limited to First-Class Mail and Priority Mail items only. This restriction also applies to Official Mail.

Z. No outside pieces (OSPs).

Z1. The following restriction is applicable only to International Service Centers (ISC)/Exchange Offices. An Anti-Pilferage Seal (Item No O817E or O818A) is required on all pouches and sacks.

Thrift Savings Plan Fact Sheet

ANNUAL RETURNS	G Fund	F Fund	U.S. Aggregate Index	C Fund	S&P 500 Stock Index	S Fund	Dow Jones U.S. Completion TSM Index	I Fund	EAFE Stock Index
2015	2.04	0.91	0.55	1.46	1.38	-2.92	-3.42	-0.51	-0.81
2016	1.82	2.91	2.65	12.01	11.96	16.35	15.75	2.10	1.00
2017	2.33	3.82	3.54	21.82	21.83	18.22	18.12	25.42	25.03
2018	2.91	0.15	0.01	-4.41	-4.38	-9.26	-9.57	-13.43	-13.79
2019	2.24	8.68	8.72	31.45	31.49	27.97	27.94	22.47	22.01
2020	0.97	7.50	7.51	18.31	18.40	31.85	32.17	8.17	7.82
2021	1.38	-1.46	-1.54	28.68	28.71	12.45	12.35	11.45	11.26
2022	2.98	-12.83	-13.01	-18.13	-18.11	-26.26	-26.54	-13.94	-14.45

MONTHLY RETURNS	G Fund	F Fund	U.S. Aggregate Index	C Fund	S&P 500 Stock Index	S * Fund	Dow Jones U.S. Completion TSM Index	I * Fund	EAFE Stock Index
2022									
June	0.29	-1.94	-1.57	-6.55	-8.25	-7.95	-9.26	-8.21	-9.28
July	0.26	2.47	2.44	9.22	9.22	10.32	10.26	5.15	4.98
Aug	0.25	-2.80	-2.83	-4.08	-4.08	-2.08	-2.11	-5.79	-4.75
Sept	0.28	-4.31	-4.32	-9.21	-9.21	-9.91	-9.93	-9.40	-9.35
Oct	0.34	-1.26	-1.30	8.10	8.10	8.59	8.53	5.98	5.38
Nov	0.35	3.70	3.68	5.58	5.59	3.59	3.59	13.72	11.26
Dec	0.32	-0.65	-0.45	-5.78	-5.76	-6.55	-6.53	-1.85	0.08
2023									
Jan	0.34	3.25	3.08	6.28	6.28	10.82	10.80	8.43	8.10
Feb	0.28	-2.58	-2.59	-2.44	-2.44	-1.63	-1.66	-2.84	-2.09
Mar	0.35	2.55	2.54	3.67	3.67	-2.90	-2.90	3.11	2.48
Apr	0.30	0.60	0.61	1.56	1.56	-2.18	-2.18	2.87	2.82
May	0.31	-1.10	-1.09	0.43	0.43	0.44	0.44	-4.01	4.23
YTD	1.59	2.62	2.46	9.63	9.65	4.00	3.94	7.26	6.81

The G Fund is managed internally by the Federal Retirement Thrift Investment Board. Assets of the F, C, S, and I Funds are managed externally. The Board currently has contracts with BlackRock Institutional Trust Company, N.A., to manage the F, C, S, and I Fund assets. The F, C, S, and I Funds invest in commingled trust funds, in which the assets of tax-deferred employee benefit plans are combined and invested together. The F, C, S, and I Funds and the BlackRock funds are passively managed index funds. Future performance of the funds will vary and may be significantly different from the returns shown above. See the *Summary of the*

Thrift Savings Plan for detailed information about the funds and their investment risks. The monthly returns of the TSP Funds represent net earnings for the month after deduction of accrued administrative expenses and, except for the G Fund, after deduction of trading costs and accrued investment management fees as well. The returns for the four indexes shown do not include any of these deductions.

* Implemented May 2001.

See next page for L Funds.

L Funds

Annual Returns	L Income	L 2020	L 2030	L 2040	L 2050
2015	1.85	1.35	1.04	0.73	0.45
2016	3.58	5.47	7.07	7.90	8.65
2017	6.19	9.86	14.54	16.77	18.81
2018	0.71	-0.36	-3.58	-4.89	-6.02
2019	7.60	9.38	17.60	20.69	23.33
2020	5.15		11.26	13.16	14.79

Annual Returns	L Income	L 2025	L 2030	L 2035	L 2040	L 2045	L 2050	L 2055	L 2060	L 2065
2021	5.42	9.75	12.37	13.43	14.51	15.40	16.34	19.90	19.90	19.90
2022	-2.70	-6.72	-10.32	-11.65	-12.90	-14.03	-15.05	-17.60	-17.61	-17.62

Monthly Returns	L Income	L 2025	L 2030	L 2035	L 2040	L 2045	L 2050	L 2055	L 2060	L 2065
2022										
June	-1.60	-2.98	-4.37	-4.84	-5.29	-5.69	-6.07	-7.25	-7.25	-7.25
July	2.21	3.50	5.00	5.47	5.92	6.33	6.71	7.89	7.90	7.90
Aug	-1.04	-1.83	-2.74	-3.03	-3.30	-3.55	-3.77	-4.36	-4.36	-4.36
Sept	-2.33	-3.98	-5.85	-6.44	-7.01	-7.50	-7.97	-9.29	-9.29	-9.29
Oct	1.98	3.07	4.52	4.91	5.32	5.66	6.02	7.36	7.36	7.36
Nov	2.41	3.62	5.21	5.69	6.15	6.55	6.93	8.03	8.03	8.03
Dec	-0.90	-1.65	-2.64	-2.93	-3.22	-3.47	-3.71	-4.48	-4.49	-4.49
2023										
Jan	2.26	3.28	4.87	5.33	5.78	6.17	6.54	7.62	7.62	7.63
Feb	-0.55	-0.94	-1.54	-1.72	-1.88	-2.03	-2.16	-2.43	-2.44	-2.44
Mar	1.05	1.38	1.87	2.01	2.14	2.24	2.34	2.54	2.55	2.55
Apr	0.63	0.79	1.07	1.13	1.20	1.25	1.31	1.48	1.48	1.48
May	-0.12	-0.30	-0.63	-0.72	-0.81	-0.89	-0.96	-1.12	-1.12	-1.12
YTD	3.29	4.22	5.64	6.02	6.40	6.72	7.03	8.04	8.04	8.04

The TSP added six new L Funds that have 5-year increments rather than the previous 10-year increments.

Freely Associated States Restrictions

We list the mailing restrictions for Freely Associated States (FAS) in the Pull-Out section of the *Postal Bulletin*. All FAS Restrictions will be updated periodically.

Freely Associated States

Mail addressed to freely associated states is subject to certain conditions or restrictions of mailing regarding content, preparation, and handling. The following FAS Restrictions table outlines these conditions as listed by each affected FAS ZIP Code™ through the use of footnoted mailing restrictions codes (see the [Restrictions](#) following the table). For more information on available extra services for FAS destinations, see *Mailing Standards of the United States Postal Service, Domestic Mail Manual (DMM®)*, part 503.

Acceptance clerks must use the table with the Retail System Software terminal to determine which FAS ZIP Codes are active and which conditions of mailing apply.

FAS Restrictions Table

FAS Table	See Restrictions
96939	A, B
96940	A, B
96941	A, B
96942	A, B
96943	A, B
96944	A, B
96960	A, B
96970	A, B, D
Marshall Islands	C
Federated States of Micronesia	C

RESTRICTIONS LEGEND

PS Form 2976, *Customs Declaration CN 22 – Sender's Declaration*

PS Form 2976-A, *Customs Declaration and Dispatch Note*

FAS = Freely Associated State

- A.** Bank currency (coin and paper) is prohibited.
- B.** Signature Confirmation, Signature Confirmation Restricted Delivery, Adult Signature Requested, Adult Signature Restricted Delivery, Certified Mail Adult Signature Required, and Certified Mail Adult Signature Restricted Delivery not available.
- C.** Collect on Delivery is prohibited.
- D.** Betel nut (Areca catechu) is prohibited.

— *Asia-Pacific Relations,
Global Business, 6-29-23*

Finance

Equipment Maintenance Allowance Schedule for Rural Routes

Rural Carriers

In accordance with the provisions of Article 9, Section 2.J.3, of Handbook EL-902, *Agreement Between the United States Postal Service and the National Rural Letter Carriers' Association*, effective July 1, 2023 (pay period 15-23), the equipment maintenance allowance (EMA) will increase to 95.0 cents per mile. The EMA is 95.0 cents per mile, or a minimum of \$38.00 per day, whichever is greater.

Auxiliary Rural Carriers, Rural Carrier Reliefs, Rural Carrier Associates, Rural Carrier Part-Time Flexibles, and Auxiliary Assistance

Employees providing auxiliary assistance or serving auxiliary routes under the provisions of Article 9, Section 2.J.5, receive an EMA of 95.0 cents per mile or \$10.10 per hour, whichever is greater. This EMA must not exceed the amount provided in the special equipment maintenance allowance for the route stops and miles.

EMA Rate Schedule

The EMA rate schedule on pages [38](#) and [39](#) supersedes all previously published EMA schedules for employees receiving EMA.

— *Collective Bargaining and Arbitration,
Labor Relations, 6-29-23*

EMA Rate Schedule (page 2 of 2)

DATE 06-15-23
PAGE 2

R A T E S C H E D U L E

RURAL EQUIPMENT MAINTENANCE

MINNEAPOLIS ISC
REPORT AAQ530P1

EFFECTIVE PP-YR 15-23

MILES STOPS =

MILES	STOPS =	*0640**0660**0680**0700**0720**0740**0760**0780**0800**0820**0840**0860**0880**0900**0920**0940**0960**0980**1000
8	39.50	39.60 39.70 39.80 39.90 40.00 40.10 40.20 40.30 40.40 40.50 40.60 40.70 40.80 40.90 41.00 41.10 41.20 41.30
9	39.60	39.70 39.80 39.90 40.00 40.10 40.20 40.30 40.40 40.50 40.60 40.70 40.80 40.90 41.00 41.10 41.20 41.30 41.40
10	39.70	39.80 39.90 40.00 40.10 40.20 40.30 40.40 40.50 40.60 40.70 40.80 40.90 41.00 41.10 41.20 41.30 41.40 41.50
11	39.80	39.90 40.00 40.10 40.20 40.30 40.40 40.50 40.60 40.70 40.80 40.90 41.00 41.10 41.20 41.30 41.40 41.50 41.60
12	39.90	40.00 40.10 40.20 40.30 40.40 40.50 40.60 40.70 40.80 40.90 41.00 41.10 41.20 41.30 41.40 41.50 41.60 41.70
13	40.00	40.10 40.20 40.30 40.40 40.50 40.60 40.70 40.80 40.90 41.00 41.10 41.20 41.30 41.40 41.50 41.60 41.70 41.80
14	40.10	40.20 40.30 40.40 40.50 40.60 40.70 40.80 40.90 41.00 41.10 41.20 41.30 41.40 41.50 41.60 41.70 41.80 41.90
15	40.20	40.30 40.40 40.50 40.60 40.70 40.80 40.90 41.00 41.10 41.20 41.30 41.40 41.50 41.60 41.70 41.80 41.90 42.00
16	40.30	40.40 40.50 40.60 40.70 40.80 40.90 41.00 41.10 41.20 41.30 41.40 41.50 41.60 41.70 41.80 41.90 42.00 42.10
17	40.40	40.50 40.60 40.70 40.80 40.90 41.00 41.10 41.20 41.30 41.40 41.50 41.60 41.70 41.80 41.90 42.00 42.10 42.20
18	40.50	40.60 40.70 40.80 40.90 41.00 41.10 41.20 41.30 41.40 41.50 41.60 41.70 41.80 41.90 42.00 42.10 42.20 42.30
19	40.60	40.70 40.80 40.90 41.00 41.10 41.20 41.30 41.40 41.50 41.60 41.70 41.80 41.90 42.00 42.10 42.20 42.30 42.40
20	40.70	40.80 40.90 41.00 41.10 41.20 41.30 41.40 41.50 41.60 41.70 41.80 41.90 42.00 42.10 42.20 42.30 42.40 42.50
21	40.80	40.90 41.00 41.10 41.20 41.30 41.40 41.50 41.60 41.70 41.80 41.90 42.00 42.10 42.20 42.30 42.40 42.50 42.60
22	40.90	41.00 41.10 41.20 41.30 41.40 41.50 41.60 41.70 41.80 41.90 42.00 42.10 42.20 42.30 42.40 42.50 42.60 42.70
23	41.00	41.10 41.20 41.30 41.40 41.50 41.60 41.70 41.80 41.90 42.00 42.10 42.20 42.30 42.40 42.50 42.60 42.70 42.80
24	41.10	41.20 41.30 41.40 41.50 41.60 41.70 41.80 41.90 42.00 42.10 42.20 42.30 42.40 42.50 42.60 42.70 42.80 42.90
25	41.20	41.30 41.40 41.50 41.60 41.70 41.80 41.90 42.00 42.10 42.20 42.30 42.40 42.50 42.60 42.70 42.80 42.90 43.00
26	41.30	41.40 41.50 41.60 41.70 41.80 41.90 42.00 42.10 42.20 42.30 42.40 42.50 42.60 42.70 42.80 42.90 43.00 43.10
27	41.40	41.50 41.60 41.70 41.80 41.90 42.00 42.10 42.20 42.30 42.40 42.50 42.60 42.70 42.80 42.90 43.00 43.10 43.20
28	41.50	41.60 41.70 41.80 41.90 42.00 42.10 42.20 42.30 42.40 42.50 42.60 42.70 42.80 42.90 43.00 43.10 43.20 43.30
29	41.60	41.70 41.80 41.90 42.00 42.10 42.20 42.30 42.40 42.50 42.60 42.70 42.80 42.90 43.00 43.10 43.20 43.30 43.40
30	41.70	41.80 41.90 42.00 42.10 42.20 42.30 42.40 42.50 42.60 42.70 42.80 42.90 43.00 43.10 43.20 43.30 43.40 43.50
31	41.80	41.90 42.00 42.10 42.20 42.30 42.40 42.50 42.60 42.70 42.80 42.90 43.00 43.10 43.20 43.30 43.40 43.50 43.60
32	41.90	42.00 42.10 42.20 42.30 42.40 42.50 42.60 42.70 42.80 42.90 43.00 43.10 43.20 43.30 43.40 43.50 43.60 43.70
33	42.00	42.10 42.20 42.30 42.40 42.50 42.60 42.70 42.80 42.90 43.00 43.10 43.20 43.30 43.40 43.50 43.60 43.70 43.80
34	42.10	42.20 42.30 42.40 42.50 42.60 42.70 42.80 42.90 43.00 43.10 43.20 43.30 43.40 43.50 43.60 43.70 43.80 43.90
35	42.20	42.30 42.40 42.50 42.60 42.70 42.80 42.90 43.00 43.10 43.20 43.30 43.40 43.50 43.60 43.70 43.80 43.90 44.00
36	42.30	42.40 42.50 42.60 42.70 42.80 42.90 43.00 43.10 43.20 43.30 43.40 43.50 43.60 43.70 43.80 43.90 44.00 44.10
37	42.40	42.50 42.60 42.70 42.80 42.90 43.00 43.10 43.20 43.30 43.40 43.50 43.60 43.70 43.80 43.90 44.00 44.10 44.20
38	42.50	42.60 42.70 42.80 42.90 43.00 43.10 43.20 43.30 43.40 43.50 43.60 43.70 43.80 43.90 44.00 44.10 44.20 44.30
39	42.60	42.70 42.80 42.90 43.00 43.10 43.20 43.30 43.40 43.50 43.60 43.70 43.80 43.90 44.00 44.10 44.20 44.30 44.40
40	42.70	42.80 42.90 43.00 43.10 43.20 43.30 43.40 43.50 43.60 43.70 43.80 43.90 44.00 44.10 44.20 44.30 44.40 44.50
41	42.80	42.90 43.00 43.10 43.20 43.30 43.40 43.50 43.60 43.70 43.80 43.90 44.00 44.10 44.20 44.30 44.40 44.50 44.60
42	42.90	43.00 43.10 43.20 43.30 43.40 43.50 43.60 43.70 43.80 43.90 44.00 44.10 44.20 44.30 44.40 44.50 44.60 44.70
43	43.00	

Maintain Updated Withholding Information in PostalEASE

As employees of the United States Postal Service®, we have a legal, moral, and fiduciary obligation to obey the tax laws of our country. As both citizens and public servants who are obligated to uphold the public trust, we are ethically mandated to complete and file all required tax forms for our federal, state, and where applicable, local taxes. We are required by appropriate taxation laws to pay our required taxes in a timely and accurate manner.

Employees are reminded that they are bound by the materials contained within the *Code of Ethics, Principles of Ethical Conduct for Government Officers and Employees*. This includes Principle 12, which states:

“Employees shall satisfy in good faith their obligations as citizens, including all just financial obligations, especially those — such as federal, state, and local taxes — that are imposed by law.”

Postal Service employees must adhere to the highest possible ethical standards concerning the payment of their taxes and other debts. You are personally responsible for ensuring correct federal, state, and local taxes are deducted from your pay. If you are subject to federal, state, or local taxes, and the correct deductions are not being withheld from your pay, you must take immediate action to ensure appropriate tax withholdings.

The Internal Revenue Service (IRS) offers several online resources to help taxpayers bring taxes withheld closer to what is owed. These resources are available anytime on irs.gov. They include:

- A tax withholding estimator, which helps determine the correct amount of federal tax to withhold: irs.gov/individuals/tax-withholding-estimator.
- Complete information on withholding, estimated taxes, FAQs, and more: irs.gov/individuals/employees/tax-withholding.

Information Security

Always Back Up Your Data

A backup is a copy of all your essential files, such as family photos, home videos, documents, and emails. Instead of storing your files in one spot (like your computer or mobile device), you can upload a copy of everything to a safe place.

Losing files is common. One small incident or failure could destroy the important data you value the most. When a computer is damaged or stops working, the stored data — irreplaceable family or vacation photos, videos, or text messages — could be lost forever, unless it has been previously copied or backed up.

Update Federal and/or State Tax Withholdings

- Complete the federal Form W-4, *Withholding Allowance Certificate*, and the state equivalent of the federal Form W-4 (e.g., to update Minnesota tax withholdings, complete Form W-4MN, *Minnesota Withholding Allowance/Exemption Certificate*). Complete the federal Form W-4 if your state does not have its own state equivalent of the federal Form W-4.
- Go to the *LiteBlue* home page at liteblue.usps.gov to access the *PostalEASE* App.
- Update your federal W-4 Payroll Module and/or your State Tax Payroll Module.
- If you do not have access to a computer or the Internet, you can call *PostalEASE* toll-free at 877-477-3273, option 1, and follow the instructions.

Note: It is to your advantage to complete the paper form before your *PostalEASE* update, as the paper form comes with helpful instructions for complex state withholding selections.

If you need assistance, contact the HR Shared Service Center at 877-477-3273, option 5. Employees with hearing disabilities can call the Federal Relay Service at 800-877-8339.

For more information about local taxes, see “Local Tax Code Information” in *Postal Bulletin* 22615 (1-12-23, pages 40–41).

The Postal Service is prohibited from providing any tax advice to employees. Any questions regarding your tax liability or responsibility must be directed to the IRS or a qualified tax preparer.

— Payroll,
Controller, 6-29-23

According to the Federal Trade Commission at consumer.ftc.gov/articles/protect-your-personal-information-and-data, it is vital to keep your security software, internet browser, and computer updated. Criminals are on the lookout for any weakness they can use to exploit your data. Updating your software regularly as soon as a new version becomes available helps ensure you have the critical patches and defenses in place against security threats.

Check out these facts from the experts at World Backup Day (worldbackupday.com/en):

- 30 percent of all computers are infected with malware.

- 113 phones are lost or stolen every minute.
- 21 percent of computer users have never backed up their data.
- 29 percent of data loss cases are caused by accident.

If you need USPS-approved, encrypted devices (i.e., flash drives and hard drives) to back up your files, they can be purchased through the eBuy+ catalog. Devices purchased outside of the eBuy+ catalog are strictly prohibited and not approved for use with USPS® equipment. A full list

of approved removable memory devices can be found on the CyberSafe webpage at blue.usps.gov/cyber.

Employees and contractors are reminded to never store personal data on Postal Service™ computers or devices. For more information about backups, visit blue.usps.gov/cyber or liteblue.usps.gov/cyber, as well as the Monthly Awareness Campaigns page at blue.usps.gov/cyber/communications.htm.

— Corporate Information Security Office
Chief Information Security Officer, 6-29-23

International Mail

Price Changes for International Mailing Services

Effective July 9, 2023, the Postal Service™ will revise Notice 123, *Price List*, to reflect changes to prices and fees for the International Mailing Services noted in this article. The following information is based on Postal Regulatory Commission (PRC) Order No. 6526 issued on May 31, 2023, in PRC Docket No. R2023-2. In that order, the PRC concluded that the price adjustments contained in the Postal Service’s notice may go into effect on July 9, 2023. The order is available on the PRC website at prc.gov.

On July 9, 2023, the Postal Service will increase prices for the following market-dominant international services:

- **First-Class Mail International® (FCMI):** The price for a single-piece postcard will be \$1.50 worldwide. The price for the FCMI letter nonmachinable surcharge will remain at \$0.40. The FCMI single-piece letter and flat prices will be as follows:

Letters				
Weight Not Over (oz.)	Price Groups			
	1	2	3-5	6-9
1	\$1.50	\$1.50	\$1.50	\$1.50
2	1.50	2.27	2.80	2.60
3	2.15	3.00	4.10	3.69
3.5	2.75	3.76	5.40	4.78

Flats				
Weight Not Over (oz.)	Price Groups			
	1	2	3-5	6-9
1	\$3.00	\$3.00	\$3.00	\$3.00
2	3.29	3.90	4.23	4.17
3	3.57	4.78	5.45	5.33
4	3.82	5.67	6.71	6.49
5	4.10	6.56	7.93	7.65
6	4.37	7.44	9.16	8.82
7	4.65	8.34	10.39	9.97
8	4.92	9.22	11.61	11.13
12	6.29	11.13	14.08	13.54
15.994	7.65	13.05	16.54	15.93

- **International Extra Services and Fees:** The Postal Service will increase prices for certain market-dominant International Extra Services as noted:
- **Certificate of Mailing service:** Fees for Certificate of Mailing service for FCMI will increase as follows:

Certificate of Mailing	
Individual Pieces	Fee
Individual article (PS Form 3817), First-Class Mail International only	\$1.95
Duplicate copy of PS Form 3817 or PS Form 3665 (per page), First-Class Mail International only	1.95
Firm mailing sheet (PS Form 3665), per piece (minimum 3), First-Class Mail International only	0.57
Bulk Quantities	
For first 1,000 pieces (or fraction thereof), First-Class Mail International only	\$10.90
Each additional 1,000 pieces (or fraction thereof), First-Class Mail International only	1.40
Duplicate copy of PS Form 3606, First-Class Mail International only	1.95

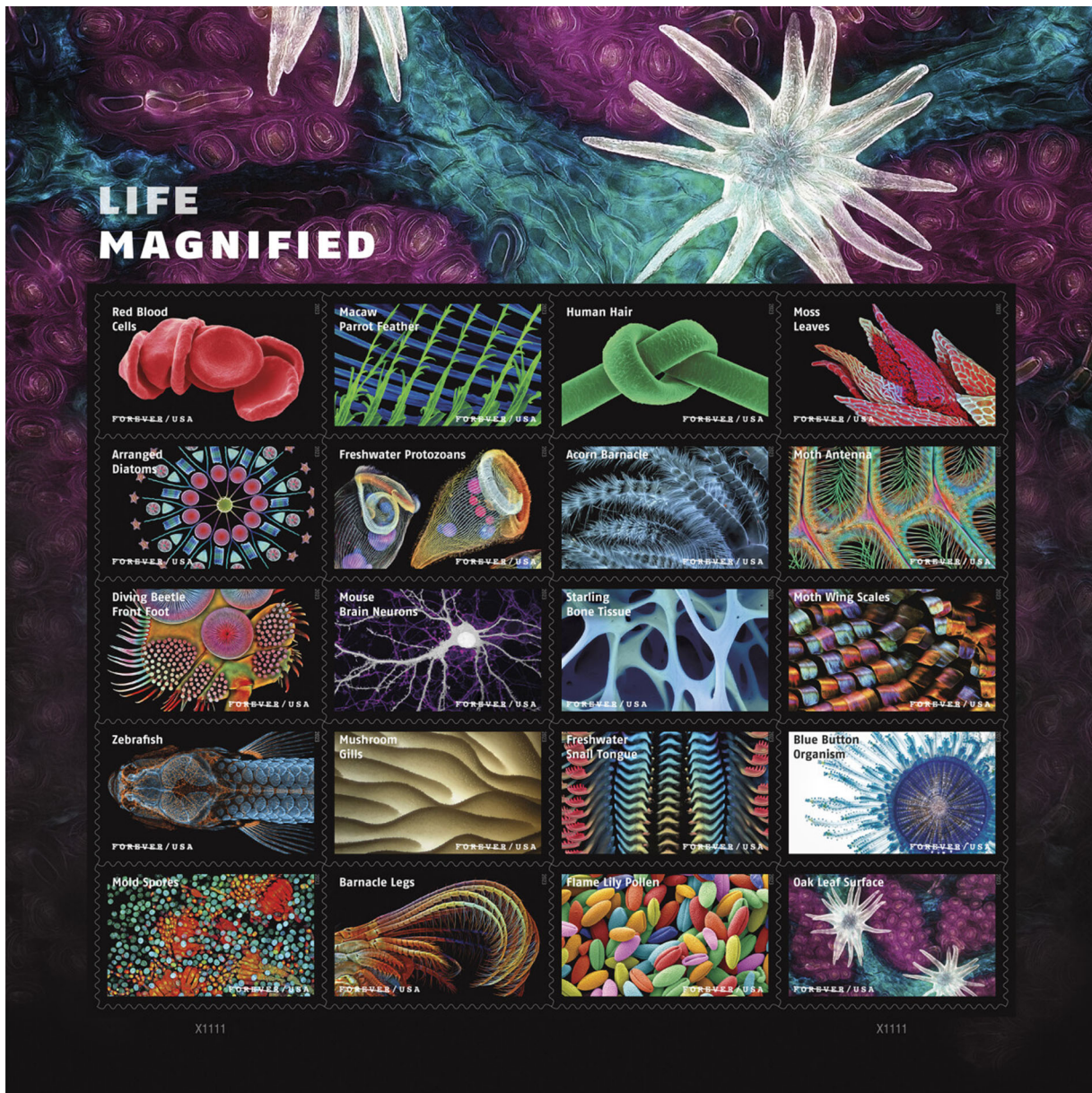
- **Registered Mail® service:** The price for international Registered Mail service for FCMI will increase to \$20.25.
- **Return Receipt service:** The price for international Return Receipt service for FCMI will increase to \$5.65.
- **Customs Clearance and Delivery Fee:** The Customs Clearance and Delivery Fee per dutiable item for Inbound Letter Post letters and flats will increase to \$8.30.
- **International Business Reply™ service (IBRS):** The price for IBRS cards will increase to \$2.10, and the price for IBRS envelopes (up to 2 ounces) will increase to \$2.65.

The Postal Service will incorporate these revisions into the July 9, 2023, edition of Notice 123, *Price List*, which is available via Postal Explorer® at pe.usps.com.

— Product Classification,
Product Solutions, 6-29-23

Stamp Services

Stamp Announcement 23-25: Life Magnified Stamps



©2022 USPS

On August 10, 2023, in Cleveland, OH, the United States Postal Service® will issue the *Life Magnified* stamps (Forever® priced at the First-Class Mail® rate) in 20 designs, in a pressure-sensitive adhesive (PSA) pane of 20 stamps (Item 484000). These stamps will go on sale nationwide August 10, 2023, and must not be sold or canceled before the first-day-of-issue. **The *Life Magnified* commemorative pane of 20 stamps must not be split and the stamps must not be sold individually.**

The *Life Magnified* stamps explore life on Earth, as few have ever seen it. Twenty stamps feature different images taken with microscopes and highly specialized photographic techniques that capture details of life undetectable by the human eye. Each stamp includes the name of the specimen that is showcased. Art director Derry Noyes designed the stamps and the stamp pane using existing photographs.

Availability to Post Offices: Item 484000, Life Magnified (Forever Priced at the First-Class Mail Rate), Pane of 20 Stamps

Stamp Fulfillment Services will not make an automatic push distribution to Post Offices. Post Offices may begin ordering stamps before the first-day-of-issue through SFS Web at sfsweb.usps.gov/sfsweb.

How to Order the First-Day-of-Issue Postmark

Customers have 120 days to obtain the first-day-of-issue postmark by mail. They may purchase new stamps at their local Post Office™ or at The Postal Store® website at store.usps.com/store/home. They must affix the stamps to envelopes of their choice, address the envelopes (to themselves or others), and place them in a larger envelope addressed to:

FDOI – Life Magnified Stamps
 USPS Stamp Fulfillment Services
 8300 NE Underground Drive, Suite 300
 Kansas City, MO 64144-9900

After applying the first-day-of-issue postmark, the Postal Service™ will return the envelopes through the mail. There is no charge for the postmark up to a quantity of 50. There is a 5-cent charge for each additional postmark over 50. All orders must be postmarked by December 10, 2023.

How to Order First-Day Covers

The Postal Service also offers first-day covers for new stamp issues and Postal Service stationery items post-marked with the official first-day-of-issue cancellation. Each item has an individual catalog number and is offered in the *USA Philatelic* catalog and online at store.usps.com/store/home. Customers may register to receive a free *USA Philatelic* catalog online at usps.com/philatelic.

Locally produced items are not authorized. Only merchandise that has been approved and assigned an item number by Headquarters Retail Marketing may be produced and sold.

Issue:	<i>Life Magnified</i> Stamps
Item Number:	484000
Denomination & Type of Issue:	First-Class Mail Forever
Format:	Pane of 20 (20 designs)
Series:	N/A
Issue Date & City:	August 10, 2023, Cleveland, OH 44101
Art Director:	Derry Noyes, Washington, DC
Designer:	Derry Noyes, Washington, DC
Existing Photo:	Don Komarechka
Existing Photo:	David Liittschwager
Existing Photos:	Tagide deCarvalho
Existing Photos:	Charles Krebs
Existing Photos:	Igor Siwanowicz
Existing Photos:	Steve Gschmeissner
Existing Photos:	Dennis Kunkel
Existing Photos:	Jason Kirk
Modeler:	Sandra Lane / Michelle Finn
Manufacturing Process:	Offset, Flexographic
Printer:	Banknote Corporation of America
Press Type:	Gallus RCS
Stamps per Pane:	20
Print Quantity:	32,000,000 stamps
Paper Type:	Phosphor Tagged Paper, Block
Adhesive Type:	Pressure-sensitive
Colors:	Cyan, Magenta, Yellow, Black
Stamp Orientation:	Horizontal
Image Area (w x h):	1.42 x 0.84 in / 36.068 x 21.336 mm
Overall Size (w x h):	1.56 x 0.98 in / 39.624 x 24.892 mm
Full Pane Size (w x h):	7.25 x 7.25 in / 184.150 x 184.150 mm
Press Sheets Size (w x h):	14.75 x 22.25 in / 374.65 x 565.15 mm
Plate Size:	120 stamps per revolution
Plate Number:	"B" followed by four (4) single digits in two corners
Marginal Markings:	
Front:	Header: <i>Life Magnified</i> • Plate number in bottom two corners
Back:	©2022 USPS • USPS logo • Two barcodes (484000) • Plate position diagram (6) • Promotional text

— Stamp Services,
 Marketing, 6-29-23

How to Order the First-Day-of-Issue Postmark

Customers have 120 days to obtain the first-day-of-issue postmark by mail. They may purchase new stamps at their local Post Office™ or at The Postal Store® website at store.usps.com/store/home. They must affix the stamps to envelopes of their choice, address the envelopes (to themselves or others), and place them in a larger envelope addressed to:

FDOI – Thinking of You Stamps
 USPS Stamp Fulfillment Services
 8300 NE Underground Drive, Suite 300
 Kansas City, MO 64144-9900

After applying the first-day-of-issue postmark, the Postal Service™ will return the envelopes through the mail. There is no charge for the postmark up to a quantity of 50. There is a 5-cent charge for each additional postmark over 50. All orders must be postmarked by December 11, 2023.

How to Order First-Day Covers

The Postal Service also offers first-day covers for new stamp issues and Postal Service stationery items postmarked with the official first-day-of-issue cancellation. Each item has an individual catalog number and is offered in the *USA Philatelic* catalog and online at store.usps.com/store/home. Customers may register to receive a free *USA Philatelic* catalog online at usps.com/philatelic.

Locally produced items are not authorized. Only merchandise that has been approved and assigned an item number by Headquarters Retail Marketing may be produced and sold.

Issue:	<i>Thinking of You Stamps</i>
Item Number:	484100
Denomination & Type of Issue:	First-Class Mail Forever
Format:	Pane of 20 (5 designs)
Series:	N/A
Issue Date & City:	August 11, 2023, Cleveland, OH 44101
Art Director:	Greg Breeding, Charlottesville, VA
Designer:	Greg Breeding, Charlottesville, VA
Illustrator:	Ellen Surrey, Van Nuys, CA
Modeler:	Sandra Lane / Michelle Finn
Manufacturing Process:	Offset, Flexographic
Printer:	Banknote Corporation of America
Press Type:	Gallus RCS
Stamps per Pane:	20
Print Quantity:	25,000,000 stamps
Paper Type:	Phosphor Tagged Paper, Block
Adhesive Type:	Pressure-sensitive
Colors:	Cyan, Magenta, Yellow, Black, PMS1605C, PMS 7579C, PMS 637C, PMS 4067C, PMS 124C
Stamp Orientation:	Vertical
Image Area (w x h):	0.77 x 1.05 in / 19.558 x 26.67 mm
Overall Size (w x h):	0.91 x 1.19 in / 23.114 x 30.226 mm
Full Pane Size (w x h):	7.22 x 7.58 in / 183.388 x 192.532 mm
Press Sheets Size (w x h):	14.44 x 15.16 in / 366.776 x 385.064 mm
Plate Size:	80 stamps per revolution
Plate Number:	“B” followed by nine (9) single digits in four corners
Marginal Markings:	
Front:	Header: Decorative Decals with friendly expressions • Plate number in four corners of the pane
Back:	©2022 USPS • USPS logo • Two barcodes (484100) • Plate position diagram (4) • Promotional text

– Stamp Services,
 Marketing, 6-29-23

Pictorial Postmarks Announcement

As a community service, the Postal Service™ offers pictorial postmarks to commemorate local events celebrated in communities throughout the nation. A list of events for which pictorial postmarks are authorized appears on the following pages. The sponsor of the pictorial postmark appears in italics under the date. Also provided are illustrations of these postmarks.

People attending these local events may obtain the postmark in person at the temporary Post Office™ station established there. Those who cannot attend the event but who wish to obtain the postmark may submit a mail order request. Pictorial postmarks are available only for the dates indicated, and *requests must be postmarked no later than 30 days following the requested pictorial postmark date.*

All requests must include a stamped envelope or postcard bearing at least the minimum First-Class Mail® postage. Items submitted for postmark may not include

postage issued after the date of the requested postmark. Such items will be returned unserved.

Customers wishing to obtain a postmark must affix stamps to any envelope or postcard of their choice, address the envelope or postcard to themselves or others, insert a card of postcard thickness in envelopes for sturdiness, and tuck in the flap. Place the envelope or postcard in a larger envelope and address it to: Pictorial Postmarks, followed by the Name of the Station, Address, City, State, ZIP+4® Code, as listed next to the postmark.

Customers can also send stamped envelopes and postcards without addresses for postmark, as long as they supply a larger envelope with adequate postage and their return address. After applying the pictorial postmark, the Postal Service returns the items (with or without addresses) under addressed protective cover.

The following pictorial postmark has been extended for 60 days:

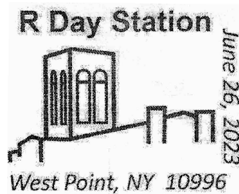


June 17, 2023

Fort Ward Sewer District

Fort Ward Station
Postmaster
271 Winslow Way East
Bainbridge Island, WA 98110-3020

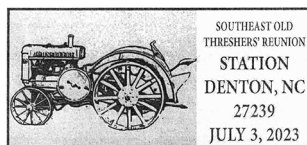
The following pictorial postmark has been extended for 30 days:



June 26, 2023

West Point Parents Club of Michigan

R Day Station
Postmaster
634 Swift Road
West Point, NY 10996



July 3, 2023

Denton Farm Park
Southeast Old Threshers'
Reunion Station
Postmaster
PO Box 9998
Denton, NC 27239-9998

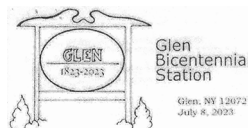


July 4, 2023

Lions Club
Pony Express Station
Postmaster
115 North Pine Street
Ten Sleep, WY 82442



July 7, 2023
United States Postal Service
White Cloud
Sesquicentennial Station
Postmaster
PO Box 9998
White Cloud, MI 49349



July 8, 2023
Town of Glen Bicentennial
Committee
Glen Bicentennial Station
Postmaster
26 Main Street, Suite 5
Fultonville, NY 12072

– Stamp Services,
Marketing, 6-29-23

How to Order the First-Day-of-Issue Digital Color or Traditional Postmarks

Customers have 120 days to obtain the first-day-of-issue postmarks by mail. Each cover must have sufficient postage to meet First-Class Mail® requirements. Customers may purchase new stamps at their local Post Office™, by phone at 844-737-7826, or on The Postal Store® website at usps.com/shop.

Digital Color Postmarks

Only select stamp issues offer a digital color postmark. Customers may submit #6 or #10 envelopes constructed of paper rated as “laser safe.” The Postal Service™ recommends envelopes of 80-pound Accent Opaque, acid-free, 9/16-inch side seams with no glue on the flap. The maximum size of all digital color postmarks is 2 inches (vertically) by 4 inches (horizontally). Allow sufficient space on the envelope to accommodate the postmark. Do not use self-adhesive labels for addresses on the envelope. Two test envelopes must be included. There is a minimum of 10 envelopes at 50 cents per postmark required at the time of servicing. Customers must submit a check, money order, or credit card for payment.

The Postal Service reserves the right to not accept hand-painted and other cachet envelopes that are not compatible with our digital color postmark equipment. The Postal Service also reserves the right to substitute traditional black rubber postmarks if use of nonspecified envelopes results in poor image quality or damage to equipment.

Customers must affix the stamps to the envelopes and address them to themselves or others for return through the mail. Or, they may include an additional self-addressed return envelope, large enough to accommodate their can-

celed items, with sufficient postage affixed for return of their postmarked items. Address customer requests for digital color postmarks to:

FDOI – (Name of Stamp Issue)
USPS Stamp Fulfillment Services
8300 NE Underground Drive, Suite 300
Kansas City, MO 64144-9900

After applying the first-day-of-issue postmark, the Postal Service will return the envelopes to the customer by U.S. Mail®.

Traditional Postmarks

Customers must affix the stamps to the envelopes and address them to themselves or others for return through the mail. Or, they may include an additional self-addressed return envelope, large enough to accommodate their canceled items, with sufficient postage affixed for return of their postmarked items. Address customer requests for traditional postmarks to:

FDOI – (Name of Stamp Issue)
USPS Stamp Fulfillment Services
8300 NE Underground Drive, Suite 300
Kansas City, MO 64144-9900

After applying the first-day-of-issue postmark, the Postal Service will return the envelopes to the customer by U.S. Mail. There is no charge for the first 50 postmarks. There is a 5-cent charge for each additional postmark over 50. Customers must submit a check, money order, or credit card for payment.

Locally produced items are not authorized. Only merchandise that has been approved and assigned an item number by Headquarters Retail Marketing may be produced and sold.



FIRST DAY OF ISSUE

FDI – Patriotic Block Stamp

USPS Stamp Fulfillment Services
8300 NE Underground Drive, Suite 300
Kansas City, MO 64144-9900

July 1, 2023

Black and White Pictorial



FDI – Toni Morrison Stamp

USPS Stamp Fulfillment Services
8300 NE Underground Drive, Suite 300
Kansas City, MO 64144-9900

July 7, 2023

Digital Color Pictorial



FDI – Toni Morrison Stamp

USPS Stamp Fulfillment Services
8300 NE Underground Drive, Suite 300
Kansas City, MO 64144-9900

July 7, 2023

Black and White Pictorial



FDI – Railroad Stations Stamps

USPS Stamp Fulfillment Services
8300 NE Underground Drive, Suite 300
Kansas City, MO 64144-9900

July 9, 2023

Digital Color Pictorial

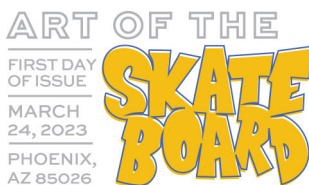


FDI – Railroad Stations Stamps

USPS Stamp Fulfillment Services
8300 NE Underground Drive, Suite 300
Kansas City, MO 64144-9900

July 9, 2023

Black and White Pictorial



FDI – Art of the Skateboard Stamps

USPS Stamp Fulfillment Services
8300 NE Underground Drive, Suite 300
Kansas City, MO 64144-9900

July 24, 2023

Digital Color Pictorial



FDI – Art of the Skateboard Stamps

USPS Stamp Fulfillment Services
8300 NE Underground Drive, Suite 300
Kansas City, MO 64144-9900

July 24, 2023

Black and White Pictorial

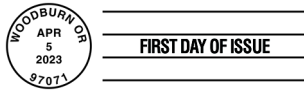


Digital Color Pictorial

FDI – Tulip Blossoms Stamps

USPS Stamp Fulfillment Services
8300 NE Underground Drive, Suite 300
Kansas City, MO 64144-9900

August 5, 2023



Black and White Pictorial

FDI – Tulip Blossoms Stamps

USPS Stamp Fulfillment Services
8300 NE Underground Drive, Suite 300
Kansas City, MO 64144-9900

August 5, 2023

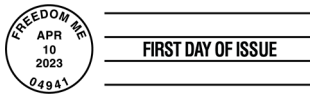


Digital Color Pictorial

FDI – U.S. Flag Stamp

USPS Stamp Fulfillment Services
8300 NE Underground Drive, Suite 300
Kansas City, MO 64144-9900

August 10, 2023

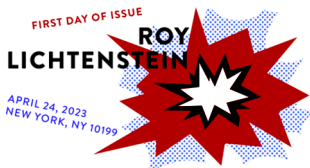


Black and White Pictorial

FDI – U.S. Flag Stamp

USPS Stamp Fulfillment Services
8300 NE Underground Drive, Suite 300
Kansas City, MO 64144-9900

August 10, 2023



Digital Color Pictorial

FDI – Roy Lichtenstein Stamps

USPS Stamp Fulfillment Services
8300 NE Underground Drive, Suite 300
Kansas City, MO 64144-9900

August 24, 2023



Black and White Pictorial

FDI – Roy Lichtenstein Stamps

USPS Stamp Fulfillment Services
8300 NE Underground Drive, Suite 300
Kansas City, MO 64144-9900

August 24, 2023



Digital Color Pictorial

FDI – Tomie dePaola Stamp

USPS Stamp Fulfillment Services
8300 NE Underground Drive, Suite 300
Kansas City, MO 64144-9900

September 5, 2023



FDOI – Tomie dePaola Stamp
USPS Stamp Fulfillment Services
8300 NE Underground Drive, Suite 300
Kansas City, MO 64144-990027

September 5, 2023

Black and White Pictorial



FDOI – Chief Standing Bear Stamp
USPS Stamp Fulfillment Services
8300 NE Underground Drive, Suite 300
Kansas City, MO 64144-9900

September 12, 2023

Digital Color Pictorial



FDOI – Chief Standing Bear Stamp
USPS Stamp Fulfillment Services
8300 NE Underground Drive, Suite 300
Kansas City, MO 64144-9900

September 12, 2023

Black and White Pictorial



FDOI – Endangered Species Stamps
USPS Stamp Fulfillment Services
8300 NE Underground Drive, Suite 300
Kansas City, MO 64144-9900

September 19, 2023

Digital Color Pictorial



FDOI – Endangered Species Stamps
USPS Stamp Fulfillment Services
8300 NE Underground Drive, Suite 300
Kansas City, MO 64144-9900

September 19, 2023

Black and White Pictorial



FDOI – Waterfalls Stamps
USPS Stamp Fulfillment Services
8300 NE Underground Drive, Suite 300
Kansas City, MO 64144-9900

October 13, 2023

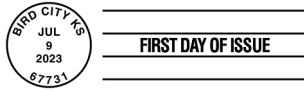
Digital Color Pictorial



FDOI – Waterfalls Stamps
USPS Stamp Fulfillment Services
8300 NE Underground Drive, Suite 300
Kansas City, MO 64144-9900

October 13, 2023

Black and White Pictorial



FIRST DAY OF ISSUE

FDI – Northern Cardinal Stamped Envelope

USPS Stamp Fulfillment Services
8300 NE Underground Drive, Suite 300
Kansas City, MO 64144-9900
November 9, 2023

Black and White Pictorial



Digital Color Pictorial

FDI – John Lewis Stamp

USPS Stamp Fulfillment Services
8300 NE Underground Drive, Suite 300
Kansas City, MO 64144-9900
November 21, 2023



Black and White Pictorial

FDI – John Lewis Stamp

USPS Stamp Fulfillment Services
8300 NE Underground Drive, Suite 300
Kansas City, MO 64144-9900
November 21, 2023



Digital Color Pictorial

FDI – Life Magnified Stamps

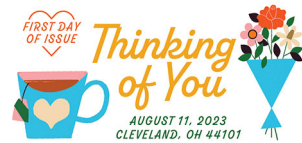
USPS Stamp Fulfillment Services
8300 NE Underground Drive, Suite 300
Kansas City, MO 64144-9900
December 10, 2023



Black and White Pictorial

FDI – Life Magnified Stamps

USPS Stamp Fulfillment Services
8300 NE Underground Drive, Suite 300
Kansas City, MO 64144-9900
December 10, 2023



Digital Color Pictorial

FDI – Thinking of You Stamps

USPS Stamp Fulfillment Services
8300 NE Underground Drive, Suite 300
Kansas City, MO 64144-9900
December 11, 2023



Black and White Pictorial

FDI – Thinking of You Stamps

USPS Stamp Fulfillment Services
8300 NE Underground Drive, Suite 300
Kansas City, MO 64144-9900
December 11, 2023



475 L'ENFANT PLAZA SW
WASHINGTON DC 20260-5540

First-Class Mail
Postage & Fees Paid
USPS
Permit No. G-10

Celebrate Summer Vacation with **Sailboats** Postcard Rate Stamps



ON SALE NATIONWIDE: **JANUARY 22, 2023**

