

September is National Preparedness Month

Helping Older Adults Prepare for Emergencies

See page 3

Contents

COVER STORY

Helping Older Adults Prepare for Emergencies 3

POLICIES, PROCEDURES, AND FORMS UPDATES

Manuals

IMM Revision: Individual Country Listing for Bahrain 4

IMM Revision: Individual Country Listing for Kuwait 4

IMM Revision: Individual Country Listing for Uruguay 5

IMM Revision: Mailable Dangerous Goods 5

Publications

Publication 52 Revision: Electronic Indicators for Mailing Hazardous Materials 6

Publication 52 Revision: Product Classification and Pricing and Classification Service Center Manager Title Change, Small-Quantity Provision, and Mail Product Updates 9

Publication 431 Revision: Changes to Post Office Box Service and Caller Service Fee Groups 35

ORGANIZATION INFORMATION

Finance

Fiscal Year 2023 Closing Guidance: Message from the Vice President, Controller 36

Information Security

Think Before You Download That App 39

Mailing and Shipping Services

First-Class Mail and USPS Marketing Mail Growth Incentives 40

Stamp Services

Stamp Announcement 23-32: Winter Woodland Animals Stamps 41

Update: Stamp Announcement 23-29: Snow Globes

Stamps 42

Pictorial Postmarks Announcement 43

How to Order the First-Day-of-Issue Digital Color or Traditional Postmarks 44

PULL-OUT INFORMATION

Fraud

Missing, Lost, or Stolen U.S. Money Order Forms 17

Missing, Lost, or Stolen Canadian Money Order Forms 24

Verifying U.S. Postal Service Money Orders 26

Counterfeit Canadian Money Order Forms 26

Toll-Free Number Available to Verify Canadian Money Orders 26

Other Information

Overseas Military/Diplomatic Mail 27

Freely Associated States Restrictions 32

POSTAL BULLETIN 2023 SEMI-ANNUAL INDEX

2023 Semi-Annual Index PB 22629 (7-27-23)

Find the latest in mail and delivery information
and services offered by U.S. Postal®
in the *Postal Bulletin* at
about.usps.com/postal-bulletin

Mail Moment®

Cover Story

Helping Older Adults Prepare for Emergencies

Natural catastrophes and man-made emergencies affect everyone involved in some way, though these situations are often amplified for communities with older adults.

These individuals often rely on accessible features, such as electrical power, elevators, accessible transportation, and accessible communication, all of which may become unavailable during an emergency event.

Anyone can find preparing for and responding to unexpected emergencies and disasters challenging, time-consuming, and anxiety-inducing. We encourage all to advocate for the health and happiness of older adults and promote their status as esteemed members of our communities.

How can we help older adults prepare for emergencies?

- Create an emergency tool kit based on their unique disabilities or special needs, such as transportation, shelter, and escape routes.
- Create a support network that can help during an emergency.
- Acknowledge that mobility limitations may make it difficult for some individuals to use the stairs or move quickly for long distances.
- Ensure that food items are available for individual dietary restrictions.
- Make a detailed list of all prescription medications.
- Distribute portable notification devices that indicate if someone is knocking on the door, ringing the doorbell, or calling on the phone.

- Familiarize them with all escape routes and locations of emergency doors and exits on each building floor where they work, live, and visit.
- Request that a panic/push-button be installed in work and living areas so that others can be notified of their location in an emergency.
- Ensure that assisted devices, such as canes, walkers, lightweight manual wheelchairs, hearing aids, and breathing apparatus are included in your plan.
- Ensure that residents of high-rise buildings know the building superintendent's name, phone number, and contact names of floor monitors and evacuation drill coordinators.

These and other preventative actions can serve as a roadmap for creating a preparedness plan for older adults with disabilities or other special needs, and as a point of reference in the event of a disaster.

Use the following resources to develop or enhance strategies for emergency preparedness:

- The USPS® National Preparedness page at blue.usps.gov/nationalpreparedness/personal-preparedness.htm.
- U.S. Department of Homeland Security at ready.gov/older-adults.
- American Red Cross at redcross.org.

— *National Preparedness,
Corporate Affairs, 9-7-23*

Policies, Procedures, and Forms Updates

Manuals

IMM Revision: Individual Country Listing for Bahrain

Effective September 7, 2023, the Postal Service™ is revising the Individual Country Listing for Bahrain in *Mailing Standards of the United States Postal Service, International Mail Manual (IMM)*® to add an observation regarding certain addressee contact information for items containing goods mailed to Bahrain.

This revision is based on a formal request that Bahrain Post (the designated postal operator of Bahrain) made through the Universal Postal Union (UPU) via *International Bureau Circular* 131, dated August 14, 2023.

Mailing Standards of the United States Postal Service, International Mail Manual (IMM)

* * * * *

Individual Country Listings

* * * * *

Bahrain

Country Conditions for Mailing

* * * * *

Observations

[Add a new entry to read as follows:]

For each item containing goods mailed to Bahrain, include on the customs declaration form the addressee's telephone number. This contact number assists Bahrain Post (the designated postal operator of Bahrain) in notifying the addressee when the item has arrived. If an undeliverable item does not contain the addressee's correct contact number, Bahrain Post will leave a notice at the addressee's address, and if the item is not collected within 30 days, Bahrain Post will return it to the country of origin.

* * * * *

Although effective September 7, 2023, the Postal Service will incorporate this revision into a later edition of the online IMM (after the one scheduled for September 11, 2023). The IMM is available via Postal Explorer® at pe.usps.com.

— Product Classification,
Product Solutions, 9-7-23

IMM Revision: Individual Country Listing for Kuwait

Effective September 7, 2023, the Postal Service™ is revising the Individual Country Listing for Kuwait in *Mailing Standards of the United States Postal Service, International Mail Manual (IMM)*® to add an observation noting that the mailer must include all relevant documentation when mailing items containing goods to Kuwait.

This revision is based on a formal request that the Ministry of Communications (the designated postal operator of Kuwait) made through the Universal Postal Union via *International Bureau Circular* 120, dated July 24, 2023.

Mailing Standards of the United States Postal Service, International Mail Manual (IMM)

* * * * *

Individual Country Listings

* * * * *

Kuwait

Country Conditions for Mailing

* * * * *

Observations

[Add a new entry to read as follows (adding "1" before the first entry):]

- The mailer must attach all necessary or relevant documentation, including invoices, export/import licenses, certificates of origin, health certificates, etc., to the inside or outside of the item to expedite customs clearance of goods mailed to Kuwait.

* * * * *

Although effective September 7, 2023, the Postal Service will incorporate this revision into a later edition of the online IMM (after the one scheduled for September 11, 2023). The IMM is available via Postal Explorer® at pe.usps.com.

— Product Classification,
Product Solutions, 9-7-23

IMM Revision: Individual Country Listing for Uruguay

Effective September 7, 2023, the Postal Service™ is revising the Individual Country Listing for Uruguay in *Mailing Standards of the United States Postal Service, International Mail Manual (IMM®)* to add the following:

- A prohibition regarding lithium batteries and cells.
- An observation regarding certain addressee contact information for goods mailed to Uruguay.

These revisions are based on formal requests that Correo Uruguayo (the designated postal operator of Uruguay) made through the Universal Postal Union (UPU) via *International Bureau Circular (IBC) 198*, dated December 14, 2020, and *IBC 207*, dated December 19, 2022.

Mailing Standards of the United States Postal Service, International Mail Manual (IMM)

* * * * *

Individual Country Listings

* * * * *

Uruguay

Country Conditions for Mailing

Prohibitions

* * * * *

IMM Revision: Mailable Dangerous Goods

Effective September 7, 2023, the Postal Service™ is revising *Mailing Standards of the United States Postal Service, International Mail Manual (IMM®)*, section 135.62, to reflect current lithium battery mailing requirements. This revision aligns the policy with parts 349, 622, and 623 of Publication 52, *Hazardous, Restricted, and Perishable Mail*, as published in the article titled “Publication 52 Correction: Required Hazardous Materials Separations” in *Postal Bulletin* 22617 (2-9-23, pages 8–15).

Mailing Standards of the United States Postal Service, International Mail Manual (IMM)

* * * * *

1 International Mail Services

* * * * *

130 Mailability

* * * * *

[Add a new entry in alphabetical order to read as follows:]

Lithium batteries and cells, including those properly installed in the equipment they are intended to operate.

* * * * *

Observations

* * * * *

[Add a new entry to read as follows:]

5. For each item containing goods mailed to Uruguay, include on the customs declaration form the addressee’s mobile telephone number and, if possible, the addressee’s email address. This contact information assists Correo Uruguayo (the designated postal operator of Uruguay) to expedite delivery.

* * * * *

Although effective September 7, 2023, the Postal Service will incorporate these revisions into a later edition of the online IMM (after the one scheduled for September 11, 2023). The IMM is available via Postal Explorer® at pe.usps.com.

— Product Classification,
Product Solutions, 9-7-23

135 Mailable Dangerous Goods

* * * * *

135.6 Batteries

* * * * *

135.62 General

[Revise the text to read as follows:]

Only new lithium cells and batteries under 135.63 and 135.64 that are properly installed in the equipment they are intended to operate may be sent internationally or to, from, or between APO, FPO, or DPO locations when not restricted or prohibited by the destination country or APO, FPO, or DPO location. For specific country restrictions, see the applicable Individual Country Listing. For specific APO, FPO, or DPO restrictions, see the information for the destination ZIP Code in the article titled “Overseas Military/Diplomatic Mail” published in each issue of the *Postal Bulletin*.

The following items are prohibited and may not be mailed internationally or to, from, or between APO, FPO, or DPO locations under any circumstances:

- New lithium batteries packed with or sent separately from equipment.
- Used, damaged, defective, or recalled lithium batteries installed in, packed with, or sent separately from equipment.
- Used, damaged, or defective electronic devices (excluding devices that are new in original packaging, and manufacturer-certified new or refurbished devices) containing or packaged with lithium batteries.

For more information, see Publication 52, parts 349, 622, and 623.

* * * * *

Although effective September 7, 2023, the Postal Service will incorporate this revision into a later edition of the online IMM (after the one scheduled for September 11, 2023). The IMM is available via Postal Explorer® at pe.usps.com.

— *Product Classification,
Product Solutions, 9-7-23*

Publications

Publication 52 Revision: Electronic Indicators for Mailing Hazardous Materials

The Postal Service™ will revise Publication 52, *Hazardous, Restricted, and Perishable Mail* (Pub 52), to incorporate new requirements, which became effective July 9, 2023, for mailers to use unique Service Type Codes (STC) and Extra Service Codes (ESC) for package shipments containing hazardous material (HAZMAT) or dangerous goods (DG).

This data must be submitted to the Postal Service electronically through a Shipping Service File (SSF) before or concurrent with tendering packages containing HAZMAT or DG. HAZMAT shipped internationally is referred to as DG.

These new requirements, published as a final rule in the *Federal Register* on April 21, 2023, are in addition to current Pub 52 regulations and do not exempt mailers from complying with existing standards. This rule standardizes the acceptance and handling of package shipments containing HAZMAT or DG by collecting electronic data to ensure these items are appropriately handled regarding the category of HAZMAT or DG contained within the package, and to create electronic manifests for the Postal Service's air carrier suppliers.

Mailpieces containing only button-cell batteries installed in equipment, or no more than four lithium cells or two lithium batteries installed in equipment they operate, (i.e., cell phones, tablets, digital readers, or glucose monitors, etc.) are not required to bear the lithium-battery mark, domestically, when no more than two mailpieces are in a single consignment, according to Pub 52, part 349.

Therefore, domestic mailpieces containing new devices in original unopened packaging, or manufacturer-certified new or refurbished devices containing or packaged with

lithium batteries that do not have a lithium-battery mark applied to the mailpiece, are exempt from the requirement to apply STCs.

Upon full implementation of electronic indicators on July 9, 2023, mailers may submit a request to be released from the requirement to separate hazardous materials from non-hazardous materials when tendering to the Postal Service. Internal Postal Service data will be used to validate compliance with this rule before the Postal Service approves the customer's release from the separation requirement.

Requests must be submitted to the director, Product Classification, at 475 L'Enfant Plaza SW, Room 4446, Washington, DC 20260-5015.

This rule also clarifies that HAZMAT or DG is not eligible to be mailed in letter- or flat-sized mailpieces. Additional details about this rule are available at [federalregister.gov/documents/2023/04/21/2023-08479/electronic-indicators-for-the-mailing-of-hazardous-materials](https://www.federalregister.gov/documents/2023/04/21/2023-08479/electronic-indicators-for-the-mailing-of-hazardous-materials).

Although the Postal Service will not publish these revisions in Publication 52 until later, these standards became effective July 9, 2023, unless otherwise specified.

Publication 52, Hazardous, Restricted and Perishable Mail

* * * * *

3 Hazardous Materials

* * * * *

32 General

* * * * *

323 Mailer Responsibility

[Revise the text of 323 to read as follows:]

323.1 General

Full responsibility rests with the mailer to comply with all Postal Service and non-Postal Service laws and regulations in mailing hazardous material. Anyone who mails, or causes to be mailed, a nonmailable or improperly packaged hazardous material may be subject to legal penalties (i.e., fines and/or imprisonment), including but not limited to those specified in 18 U.S.C. Transporting hazardous materials before entry as U.S. Mail and after receipt from the Postal Service is subject to DOT regulations.

323.2 Service Type Codes

Mailers tendering to the Postal Service packages containing hazardous materials must use a unique Service Type Code (STC) for domestic outbound and return packages that corresponds to the product being shipped (e.g., Priority Mail, Parcel Select Lightweight, and USPS Ground Advantage). The STC is required regardless of whether mailpieces are entered at origin or for destination entry. If purchasing an eligible extra service, mailers must use the STC indicating the product and extra service. Extra services permitted with hazardous materials mailings are:

- a. Signature Confirmation.
- b. Insurance less than or equal to \$500.
- c. Insurance over \$500.
- d. Signature Requested for Priority Mail Express.
- e. Adult Signature over 21 for Priority Mail Express (tobacco/Electronic Nicotine Delivery System [ENDS] products).
- f. Adult Signature over 21 for Priority Mail (ENDS products).

A list of HAZMAT STCs and ESCs is in Appendix G and Pub 199.

323.3 Extra Service Codes

Mailers tendering to the Postal Service packages containing hazardous materials must use ESC 857. Mailers may optionally use one of 23 unique content-specific Extra Service Codes (ESC) for domestic outbound and return packages that corresponds to the specific category of hazardous material contained within the mailpiece. If one of the content-specific ESC is used, then ESC 857 may be omitted when not enough extra-service code fields are available for the package details. A list of ESCs is in Appendix G and Pub 199.

Note: While using the content-specific ESC is currently a recommended practice, the Postal Service may make this requirement mandatory in the future.

323.4 Additional GS1 DotMatrix (2D) IMpb

Effective January 21, 2024, in addition to including the appropriate STC in the one-dimensional GS1-128 IMpb barcode on the address label, the Postal Service requires adding two (2) supplemental GS1-DataMatrix (2D) IMpbs to domestic shipping labels for mailpieces containing hazardous materials — one in the address block to the left of the delivery address and one in the lower right corner of the shipping label. For more information on the GS1-DataMatrix (2D) IMpbs, see GS1 (2D) information and barcode specifications at gs1.org/docs/barcodes/GS1_DataMatrix_Guide-line.pdf and postalpro.usps.com/shipping/impb/2d-impb-guide

323.5 Shipping Service File

Mailers shipping hazardous materials domestically utilizing PC Postage, eVS, USPS Ship, and/or ePostage platforms must incorporate the applicable Service Type Code (STC) and/or Extra Service Code (ESC) listed in Appendix G and Pub 199, and transmit a Shipping Services File (SSF) using Version 1.7 or higher or Shipping Partner Event File (SPEF) using Version 5.0 or higher to the Postal Service before, or concurrent with, tendering any hazardous materials shipments.

323.6 Legacy Postage and Hard-Copy Postage Statements

Mailers using legacy postage meters or hard-copy postage forms must present hazardous materials mailings to a Postal Service retail or business mail entry unit for acceptance.

323.7 USPS-Generated Shipping Labels

At the time of label generation, mailers using a label that USPS generated (including but not limited to USPS APIs, WebTools, Click-n-Ship, or Merchant Returns Application) must indicate whether the shipment contains hazardous materials.

* * * * *

6 International Mail

62 Hazardous Materials: International Mail

621 General Requirements

* * * * *

[Add new section 621.5 to read as follows:]

621.5 Extra Service Codes and Shipping Service Files

Mailers shipping dangerous goods internationally, including to APO/FPO/DPO destinations utilizing PC Postage, eVS, USPS Ship, and ePostage platforms, must include ESC 857 and incorporate the applicable content-specific Extra Service Code (ESC) listed in Appendix G and Pub

199, and transmit a Shipping Services File (SSF) using Version 1.7 or higher or Shipping Partner Event File (SPEF) using Version 5.0 or higher to the Postal Service before, or concurrent with, tendering dangerous goods shipments.

* * * * *

[Add new Appendix G to read as follows:]

Appendix G

Hazardous Materials Service Type Codes (STCs) and Extra Service Codes (ESCs)

This appendix contains a complete list of Service Type Codes (STCs) and Extra Service Codes (ESCs) to be applied within the tracking barcodes and electronic data submission for shipments containing hazardous materials or dangerous goods (See 323.2 and 323.3):

STCs Domestic Outbound (Required)

The following STCs are required when shipping domestic hazardous materials, unless an STC from the STCs Domestic Outbound “Optional” table is used:

760	Priority Mail Express Signature Waived — Hazardous Materials
116	Priority Mail USPS Tracking — Hazardous Materials
184	USPS Ground Advantage (up to 15.999 oz) USPS Tracking — Hazardous Materials
395	Parcel Select USPS Tracking — Hazardous Materials
785	Parcel Select Lightweight USPS Tracking — Hazardous Materials
362	USPS Ground Advantage (one pound or more) USPS Tracking — Hazardous Materials

STCs Domestic Outbound (Optional)

The following STCs are optional unless one of the applicable Extra Services is selected when shipping domestic hazardous materials:

761	Priority Mail Express Signature Requested — Hazardous Materials
762	Priority Mail Express with Insurance — Hazardous Materials
763	Priority Mail Express with Insurance Restricted Delivery — Hazardous Materials
764	Priority Mail Express Adult Signature Over 21 — Hazardous Materials
120	Priority Mail Insurance <= \$500 — Hazardous Materials
323	Priority Mail Insurance > \$500 — Hazardous Materials
075	Priority Mail Adult Signature Over 21 — Hazardous Materials
063	Priority Mail Signature Confirmation — Hazardous Materials
185	USPS Ground Advantage (up to 15.999 oz) Insurance <= \$500 — Hazardous Materials
186	USPS Ground Advantage (up to 15.999 oz) Insurance > \$500 — Hazardous Materials
363	USPS Ground Advantage (one pound or more) Insurance <= \$500 — Hazardous Materials
365	USPS Ground Advantage (one pound or more) Insurance > \$500 — Hazardous Materials
166	USPS Ground Advantage (up to 15.999 oz) Signature Confirmation — Hazardous Materials
483	Parcel Select Insurance <= \$500 — Hazardous Materials
628	Parcel Select Insurance > \$500 — Hazardous Materials

646	Parcel Select Signature Confirmation Hazardous Materials
786	Parcel Select Lightweight Insurance <= \$500 — Hazardous Materials
787	Parcel Select Lightweight Insurance >500 — Hazardous Materials
749	Parcel Select Lightweight Signature Confirmation — Hazardous Materials

STCs Domestic Returns (Required)

The following STCs for domestic hazardous materials returns packages are required, unless an STC from the STCs Domestic Returns “Optional” list is used:

676	PRS — Hazardous Materials
187	USPS Ground Advantage Returns (up to 15.999 oz) — Hazardous Materials
385	USPS Ground Advantage Returns (one pound or more) — Hazardous Materials
037	Priority Mail Return Service — Hazardous Materials
217	USPS Ground Advantage Returns (up to 15.999 oz) — Division 6.2 Hazardous Materials
218	USPS Ground Advantage Returns (one pound or more) — Division 6.2 Hazardous Materials
219	Priority Mail Return Service — Division 6.2 Hazardous Materials
859	PRS: HAZMAT — Division 6.2 Hazardous Materials

STCs Domestic Returns (Optional)

The following STCs are optional for domestic hazardous materials returns packages unless the applicable Extra Service is selected:

190	USPS Ground Advantage Returns (up to 15.999 oz) Insurance <= \$500 — Hazardous Materials
191	USPS Ground Advantage Returns (up to 15.999 oz) Insurance > \$500 — Hazardous Materials
388	USPS Ground Advantage Returns (one pound or more) Insurance <= \$500 — Hazardous Materials
399	USPS Ground Advantage Returns (one pound or more) Insurance > \$500 — Hazardous Materials
515	Priority Mail Return Service Insurance <= \$500 — Hazardous Materials
517	Priority Mail Return Service Insurance > \$500 — Hazardous Materials
678	PRS Insurance > \$500 — Hazardous Materials

ESCs Domestic (Optional)

The following is a list of category-specific ESCs that may be used in conjunction with an STC if the mailer chooses:

810	Air Eligible Ethanol Package
811	Class 1 — Toy Propellant/Safety Fuse Package
812	Class 3 — Flammable Liquid Package
813	Class 7 — Radioactive Materials Package
814	Class 8 — Corrosive Materials Package
815	Class 8 — Nonspillable Wet Battery Package
816	Class 9 — Lithium Battery Marked — Ground Only Package
817	Class 9 — Lithium Battery — Returns Package
818	Class 9 — Lithium batteries, marked package
819	Class 9 — Dry Ice Package
820	Class 9 — Lithium batteries, unmarked package
821	Class 9 — Magnetized Materials Package
822	Division 4.1 — Flammable solids and Safety Matches Package

823	Division 5.1 – Oxidizers Package
824	Division 5.2 – Organic Peroxides Package
825	Division 6.1 – Toxic Materials Package
826	Division 6.2 – Infectious Substances Package
827	Excepted Quantity Provision Package
828	Ground Only Hazardous Materials
829	ID8000 Consumer Commodity Package
830	Lighters Package
831	LTD QTY Ground Package
832	Small Quantity Provision Package

ESCs Domestic and International, including APO/FPO/DPO (Required)

The following ESCs must be provided for all shipments containing hazardous materials or dangerous goods:

857	Hazardous Materials
-----	---------------------

ESCs International and APO/FPO/DPO (Required)

The following is a list of ESCs required for use in the mailers Shipping Service File, when tendering the following dangerous goods internationally with the Postal Service:

813	Class 7 – Radioactive Materials Package
820	Class 9 – Lithium batteries, unmarked package*
826	Division 6.2 – Infectious Substances Package

* The batteries must be installed in the equipment being shipped and must not bear markings or labels identifying the contents as lithium batteries.

* * * * *

The Postal Service will incorporate these revisions into the next edition of Publication 52, which is available via Postal Explorer® at pe.usps.com.

– Product Classification, Product Solutions, 9-7-23

Publication 52 Revision: Product Classification and Pricing and Classification Service Center Manager Title Change, Small-Quantity Provision, and Mail Product Updates

The Postal Service™ will revise Publication 52, *Hazardous, Restricted, and Perishable Mail* (Pub 52), in various sections, to reflect certain Postal Service changes that became effective July 9, 2023 (unless otherwise specified).

Pub 52 is being revised to:

- Reflect a title change to director for the Postal Service department Product Classification and the Pricing and Classification Service Center (PCSC) manager.
- Restore the small-quantity provision inadvertently removed from the text of Pub 52.
- Include inner-receptacle quantity limits in the associated small-quantity packaging instructions.
- Replace references to obsolete Merchandise Return with USPS Returns®.
- Eliminate references to First-Class Mail®, Parcel Select Ground®, and USPS Retail Ground®.
- Clarify in Exhibit 526.6, “Requirements for Mailing Small, Harmless, Cold-Blooded Animals (Except Snakes, Turtles, and Turtle Eggs),” that water is allowed when mailing fish.

Although these revisions will not be published in Publication 52 until later, these changes are effective immediately unless otherwise specified, except for the rebranding of First-Class Package Service® to USPS Advantage™ Ground, and the discontinuation of USPS Retail Ground and Parcel Select Ground products. Those changes became effective July 9, 2023, and will be addressed fully in a future edition of Pub 52.

Publication 52, Hazardous, Restricted, and Perishable Mail

* * * * *

2 General Guidelines

21 Mailability

* * * * *

214 Appeals

[Revise the text of 214 to read as follows:]

A mailer who receives an adverse decision from a postmaster may file a written appeal with the PCSC (see 213 for address), which issues the final agency decision. After the PCSC issues an initial ruling, the mailer may appeal to the director, Product Classification, USPS Headquarters, Washington, DC, who has the authority to render a final decision on the appeal.

Mailers may file a written appeal of a final Postal Service agency decision with the USPS Recorder, Judicial Officer, under the rules of procedure in 39 CFR 953.

DIRECTOR, PRODUCT CLASSIFICATION
U.S. POSTAL SERVICE
475 L'ENFANT PLAZA SW, RM 4446
WASHINGTON, DC 20260-5015

RECORDER
JUDICIAL OFFICER
U.S. POSTAL SERVICE
2101 WILSON BLVD, STE 600
ARLINGTON, VA 22201-3078

* * * * *

22 Marking Requirements**221 General**

* * * * *

221.2 Ancillary Endorsements*[Revise the text of 221.2 to read as follows:]*

A mailer endorsement may be used to request forwarding, return, or address-correction service for items that are undeliverable as addressed (see DMM 507).

Mailpieces containing hazardous materials mailed via surface transportation (327.1b) must bear one of the following endorsements:

- a. "Address Service Requested;"
- b. "Forwarding Service Requested;" or
- c. "Return Service Requested."

Mailers are not permitted to use the endorsement "Change Service Requested" for mailpieces containing hazardous materials.

* * * * *

228 Shipping Papers*[Revise the first paragraph of 228 to read as follows:]*

Mailable hazardous materials eligible to be sent by Priority Mail Express or Priority Mail must be packaged, labeled, and appropriately documented for air transportation, as required by federal regulations and subchapter 22.

* * * * *

23 Handling Hazardous Materials*[Revise the text of subchapter 23 to read as follows:]***231 General**

A potentially dangerous situation exists whenever hazardous materials, restricted matter, or perishable matter is being moved from one place to another. Careless handling can result in serious injury to the general public and Postal Service personnel, damage to other mail and Postal Service equipment, and delays in processing and delivering mail.

The *Postal Operations Manual* (POM) provides additional instructions for handling hazardous materials in the mail.

232 Nonmailable Hazardous Materials Found in the Mailstream

When any mailpiece containing a nonmailable hazardous material is found in the mailstream, the procedures in POM 139.117 must be followed if the materials present an immediate threat to persons or property. When there is no immediate threat to persons or property, follow the procedures in POM 139.118.

* * * * *

3 Hazardous Materials

* * * * *

32 General

* * * * *

325 DOT Hazardous Materials Warning Labels and Markings**325.1 General Requirements**

* * * * *

[Revise the last paragraph of 325.1 to read as follows:]

Limited Quantity or UN3373 markings may be permitted to be displayed at a reduced size with special authorization from the director, Product Classification (see 214 for address).

325.2 Nonmailable Warning Labels and Marks

* * * * *

[Revise the last sentence of the Note to read as follows:]

***DOT warning labels must meet size and color requirements in 49CFR §172.407 through 172.446 unless special authorization from the director, Product Classification, is obtained as outlined in 325.1.

* * * * *

325.4 Limited Quantity Markings

* * * * *

[Revise the text of item d. to read as follows:]

- d. Applying a reduced-size (50mm or 25mm with a DOT Special Permit) limited quantity mark requires prior written approval from the director of Product Classification (see 214 for address).

* * * * *

327 Transportation Requirements**327.1 General***[Revise the text of 327.1 to read as follows:]*

The following applies:

- a. *Air Transportation.* When eligibility for air transportation is sought, mailable hazardous materials eligible for air transportation per subchapter 34 must be sent as Priority Mail Express or Priority Mail. Mailers must prepare mailpieces to meet all requirements that apply to air transportation. Mailpieces must be properly packaged and labeled within DMM requirements and the operator variations of the air carrier. When required, a shipper's declaration for dangerous goods must be affixed to the outside of the mailpiece.

Note: Mailable hazardous materials that are prohibited from air transportation may not be sent as Priority Mail Express or Priority Mail.

- b. *Surface Transportation.* All hazardous materials eligible to be sent as Parcel Select Lightweight or USPS Ground Advantage must be prepared under the requirements that apply to surface transportation. A mailpiece containing mailable hazardous materials utilizing Parcel Select Lightweight or USPS Ground Advantage must not, under any circumstance, be transported on air transportation, except for items identified in 327.2g.

327.2 Air Transportation Prohibitions

[Revise the introductory text of 327.2 to read as follows:]

All mailable hazardous materials sent as Priority Mail Express or Priority Mail must meet requirements for air transportation. The following types of hazardous materials are always prohibited on air transportation regardless of class of mail:

* * * * *

33 Hazard Classes

* * * * *

336 USPS Limited Quantity Surface Materials

[Revise the text of 336 to read as follows:]

This category is only applicable for materials that present a limited hazard during transportation due to their form, quantity, and packaging. It is intended for surface transportation and is unique to domestic Postal Service networks. The following applies:

- a. Limited Quantity Surface Materials are prohibited in Priority Mail Express, Priority Mail, and all classes of international mail.
- b. Placing surface transportation labels or associated text markings on any air-eligible mail service to circumvent air transportation is prohibited.
- c. These materials generally must also qualify as a consumer commodity to be permitted in the Postal Service network.
- d. This material includes those previously classified as ORM-D (“Other Regulated Material”). See 332 and Appendix A.

* * * * *

[Add new part 338 to read as follows, renumber current part 338 as 339, and delete current part 339 in its entirety:]

338 Small Quantity

338.1 Definition

A *small quantity* is the maximum amount of a specific hazardous material that when transported by domestic highway and rail transportation is not subject to any DOT requirements (e.g., packaging, marking, labeling, etc.) other than those specified in 49 CFR 173.4. Not every hazardous material is eligible to be shipped as a small quantity. Additionally, for Postal Service purposes, Class 1, Class 2, Division 6.2, and Class 7 materials are not permitted to be sent as a small quantity.

The small-quantity provision is applicable to domestic mail only, and its use is prohibited for international shipments or APO/FPO/DPO mail. The small-quantity provision must only be used for domestic surface transportation (highway or rail).

338.2 Mailability

Hazardous materials listed in the following categories are eligible to be sent in domestic mail under the small-quantity provision, via surface transportation, only when each primary receptacle is limited to 30 milliliters (1 ounce) or less for liquids and 30 grams (1 ounce) or less for solids, as applicable:

- a. Class 3.
- b. Division 4.1.
- c. Division 4.2 (Packing Groups II and III only).
- d. Division 4.3 (Packing Groups II and III only).
- e. Division 5.1.
- f. Division 5.2.
- g. Division 6.1 (Packing Group III only).
- h. Class 8.
- i. Class 9.

338.3 Additional Restrictions

Materials identified in Appendix A as prohibited in table columns (e), “Domestic Mail Air,” and (f), “Domestic Mail Surface,” are ineligible for mailing under the small-quantity provision without regard to their hazard class, division, or packing group.

338.4 Packaging and Marking

Hazardous materials eligible to be shipped under the small-quantity provision permitted in 49 CFR and 338.2 must be prepared following Packaging Instruction 10A in Appendix C. Each mailpiece that qualifies to be sent under the small-quantity provision must be clearly marked on the address side with the following words: “This package conforms to 49 CFR 173.4 for domestic highway or rail transport only.”

* * * * *

339 Packaging Requirements for Hazardous Materials

339.1 DOT Packing Groups

[Revise the third sentence in renumbered 339.1 to read as follows:]

Packaging Group designators are always written in Roman numerals, for example "PG II."

* * * * *

34 Mailability by Hazard Class

341 Explosives (Hazard Class 1)

* * * * *

341.2 Mailability, Packaging, and Marking

* * * * *

[Revise the second sentence of the text of item c. to read as follows:]

- c. ***The only exceptions are for Division 1.4S toy propellant devices and safety fuses that have been approved by the director, Product Classification, USPS Headquarters, Washington, DC, before mailing as stated in 341.***

* * * * *

341.22 Mailable Explosives

* * * * *

[Revise the second sentence of the introductory text of item a. to read as follows:]

- a. ***A toy propellant device assigned UN0454 or NA0323 and classed as a Division 1.4S explosive is eligible for mailing in domestic mail via surface transportation only when prior written permission has been obtained from the director, Product Classification, USPS Headquarters, Washington, DC.***

* * * * *

[Revise the second sentence of item b. to read as follows:]

- b. ***Safety fuses assigned UN0105 as a Division 1.4S explosive may be mailed in domestic mail via surface transportation only when prior written approval has been granted by the director, Product Classification, USPS Headquarters, Washington, DC.***

* * * * *

342 Gases (Hazard Class 2)

* * * * *

342.2 Mailability

[Add the section number and title "342.21 General" above the text immediately under 342.2 and renumber current 342.21 and 342.22 as 342.22 and 342.23.]

342.22 Nonmailable Gases

* * * * *

[Revise the last sentence of item a. in renumbered 342.22 to read as follows:]

- a. ***However, if an approval number is obtained from DOT, consideration for mailing may be requested from the director, PCSC, under the provisions in 343.25.

* * * * *

[Revise the text of the Note in item c. of renumbered 342.22 to read as follows:]

Note: See 342.23 for mailable types of fire extinguishers.

* * * * *

343 Flammable and Combustible Liquids (Hazard Class 3)

* * * * *

343.2 Mailability and Packaging

* * * * *

343.25 Lighters

* * * * *

[Revise the text of item b. to read as follows:]

- b. The prospective mailer of the lighter submits to the PCSC director a written request for authorization to mail the lighter, accompanied by a legible copy of the official DOT notice conveying the approval described in 343.25a, along with a specimen of the actual lighter, the packaging materials in which each lighter is to be mailed, and the number of mailpieces and mailing location; the mailer receives from the PCSC director a letter approving the requested authorization for mailing.

* * * * *

[Revise the text of item d. to read as follows:]

- d. When the mailpiece is presented for mailing, the address side of the mailpiece must prominently display the proper shipping name "Lighter(s)" or "Lighter Refill(s)" followed by the Approval Number (LAA****) and the marking "Surface Only" or "Surface Mail Only," and all preparation and packaging requirements in the PCSC director's approval letter must be met. A

legible copy of the PCSC director’s approval letter must be presented at the time of the first mailing at each Postal Service facility.

* * * * *

343.27 Authorization to Mail Ethanol-Based Flammable Liquids or Solids

* * * * *

[Revise the second paragraph of 343.27 to read as follows:]

Mailers must submit a letter of request to the director, Product Classification (see 214 for address). The request must include a list of each specific product to be mailed under the authorization, an SDS for each product, the office of mailing, and expected frequency and quantity of mailings.

* * * * *

[Revise the first sentence of item a. to read as follows:]

- a. Present a copy of the mailer’s authorization letter from the director, Product Classification, (to be kept on file at the office of mailing) at the time of the mailer’s first mailing at any Postal Service facility.***

* * * * *

[Revise the text of item d. to read as follows:]

- d. Enter parcels using Priority Mail Express or Priority Mail.

* * * * *

346 Toxic Substances and Infectious Substances (Hazard Class 6)

* * * * *

346.2 Mailability

346.21 General

* * * * *

346.212 Division 6.2, Infectious Substances

[Revise the third sentence of item a. to read as follows:]

- a. ***The mailer must receive written approval from the USPS director, Product Classification (see 214 for address).***

* * * * *

[Revise the text of items (1) through (6) of item b. to read as follows:]

- (1) Category B infectious substance — USPS Packaging Instruction 6C.
- (2) Sharps and other mailable regulated medical waste — USPS Packaging Instruction 6D.
- (3) Used health care products — USPS Packaging Instruction 6E.

- (4) Forensic materials — USPS Packaging Instruction 6F.

- (5) Nonregulated materials — USPS Packaging Instruction 6G.

- (6) Exempt human or animal specimens — USPS Packaging Instruction 6H.

* * * * *

346.3 Packaging, Marking, Labeling, and Documentation

* * * * *

346.32 Division 6.2, Infectious Substances

* * * * *

346.321 Category B Infectious Substances

* * * * *

[Revise the second sentence of the introductory text of 346.321 to read as follows:]

A material that is classified as a Category B infectious substance and that meets the definition in 346.12a2 must be triple-packaged, meeting the packaging requirements in 49 CFR 173.199, and sent with Priority Mail or Priority Mail Express service.

* * * * *

346.322 Sharps Waste and Other Mailable Regulated Medical Waste

* * * * *

[Revise the last sentence of the introductory paragraph to read as follows:]

***Regulated medical waste and sharps medical waste as defined in 346.12f and 346.12g and containing materials classified as Category B infectious substances must be marked UN3291 and are permitted for mailing only using USPS Returns Service (see DMM 505.3) via Priority Mail Return Service option, subject to the following requirements:

[Revise the third sentence of the introductory text of item a. to read as follows:]

- a. ***The vendor in whose name the authorization is being sought must submit a written request to the director of Product Classification at Postal Service Headquarters (see 214 for address).***

* * * * *

[Revise the first sentence of item d. to read as follows:]

- d. *Package Testing.* Vendors must submit to the director of Product Classification (see 214 for address) package-testing results from an independent testing

facility for each package for which the vendor is requesting authorization.***

* * * * *

[Revise the third sentence of the introductory text of item f. to read as follows:]

f. ***The vendor may contest a decision to suspend authorization by writing to the director, Product Classification (see 214 for address) within 7 days from the date of the letter of suspension.***

* * * * *

346.323 Used Health Care Products

* * * * *

[Revise the second sentence of the introductory paragraph to read as follows:]

***A used health care product not suspected to contain an infectious material, or that is known or suspected to contain a Category B infectious substance and is being returned to the manufacturer or manufacturer’s designee, is mailable with Priority Mail or Priority Mail Express service subject to the following packaging requirements:

* * * * *

346.324 Forensic Material in Category B

* * * * *

[Revise the last sentence of the introductory paragraph to read as follows:]

***Forensic material known or suspected to contain a Category B infectious substance as identified in 346.321 is mailable utilizing Priority Mail or Priority Mail Express service when triple-packaged in a primary receptacle, secondary container, and a rigid outer shipping container as follows:

* * * * *

346.325 Nonregulated Materials

* * * * *

[Revise the introductory paragraph of 346.325 to read as follows:]

Nonregulated materials as defined in 346.234 are not subject to regulation as hazardous materials, but must be properly packaged when presented for mailing. Regulated medical waste and sharps medical waste must be packaged and mailed under 346.322, and used health care products must be packaged and mailed under 346.323. Exempt human and animal specimens must be packaged under 346.326. Nonregulated materials must be held within a securely sealed primary receptacle. The primary receptacle must be surrounded by sufficient absorbent material (for liquids) and cushioning material to protect the primary

receptacle from breakage. The absorbent material must be capable of taking up the entire liquid contents of the primary receptacle in case of leakage.

* * * * *

346.326 Exempt Human or Animal Specimens

* * * * *

[Delete the last sentence of the text of 346.326.]

* * * * *

4 Restricted Matter

* * * * *

43 Firearms

* * * * *

434 Replica or Inert Explosive Devices

* * * * *

[Revise the text of item b. to read as follows:]

b. Registered Mail service is used.

* * * * *

45 Other Restricted Materials

* * * * *

453 Controlled Substances and Drugs

* * * * *

453.3 Mailability

* * * * *

453.36 Return of Prescription Drugs

[Revise the text of 453.36 to read as follows:]

Mailers may use USPS Returns to return prescription drugs for purposes of drug recalls, voluntary manufacturer withdrawals, and dispensing errors, such as incorrect drug, dosage, or strength, as permitted by 21 CFR 1307.11 or other applicable law. The mailpiece must be addressed to the manufacturer or its registered agent. Manufacturers or their registered agents must furnish mailing containers to their customers to mail back the identified drugs utilizing USPS Returns Service (see DMM 505.3.0) via Priority Mail Return Service option for these mailpieces. Manufacturers or their agents continue to be responsible for maintaining records in compliance with any regulation of the U.S. Drug Enforcement Administration or the U.S. Food and Drug Administration.

453.7 Mail-back Programs

* * * * *

[Revise the second sentence of item a. to read as follows:]

- a. ***DEA-registered mail-back collectors must also obtain an authorization from the USPS director, Product Classification before implementing any mail-back program.***

* * * * *

[Revise the text of 453.7b(4) to read as follows:]

(4) Have postage pre-paid using one of the following products:

- (a) Priority Mail Return Service; or
- (b) Business Reply Mail parcels.

* * * * *

[Revise the first sentence of the introductory text of item d. to read as follows:]

Mailers wishing to conduct a mail-back program must submit a letter of request to the director, Product Classification (see DMM 608.8.1 for address).***

* * * * *

[Revise the text of item e. to read as follows:]

An authorized mail-back collector that terminates, transfers, or discontinues business must provide the director, Product Classification, with the name, registered address, and registration number of the mail-back collector that will receive the remaining mail-back packages, in accordance with DEA regulations.

* * * * *

5 Perishable Matter

* * * * *

52 Animals

* * * * *

526 Mailable Live Animals

* * * * *

526.6 Small, Harmless, Cold-Blooded Animals

* * * * *

Exhibit 526.6

Requirements for Mailing Small, Harmless, Cold-Blooded Animals (Except Snakes, Turtles, and Turtle Eggs)

General Requirements:

* * * * *

[Revise the second bullet of "General Requirements" under Exhibit 526.6 to read as follows:]

- Must not require any food, water (except for fish), or attention during transport.

* * * * *

6 International Mail

* * * * *

62 Hazardous Materials: International Mail

* * * * *

622 Mailable Hazardous Materials

* * * * *

622.2 Biological Substances, Division 6.2

* * * * *

[Revise the address in the text of item c. to read as follows:]

DIRECTOR, PRODUCT CLASSIFICATION
U.S. POSTAL SERVICE
475 L'ENFANT PLAZA SW, RM 4446
WASHINGTON, DC 20260-5015

* * * * *

7 Air Transportation Requirements

71 General

* * * * *

[Revise the second and third paragraphs of 71 to read as follows:]

Full compliance with regulations governing shipping harmful matter by air transportation is essential because these materials can endanger Postal Service employees, airline passengers and personnel, aircraft equipment, and Postal Service equipment and facilities.

For the purposes of this chapter, air transportation requirements apply to all mailable hazardous materials, restricted matter, and perishable matter sent via Priority Mail Express, Priority Mail, or First-Class Package International Service.

* * * * *

72 Hazardous Materials: Air Transportation

721 General Requirements

* * * * *

[Revise the text of item c. to read as follows:]

- c. Be sent by Priority Mail Express, Priority Mail, or First-Class Package International Service.

* * * * *

726 Postal Service Handling

726.1 Acceptance Personnel

* * * * *

[Revise the text of item c. and add new item d. to read as follows:]

- c. The mailpiece is eligible for air transportation and mailed as Priority Mail Express, Priority Mail, or First-Class Package International Service, as permitted.
- d. These mailpieces must never be marked "Surface Mail" or "Surface Mail Only."

[Revise the text of the Note to read as follows:]

Note: For safety reasons, mailers are not permitted to pay postage at Priority Mail Express or Priority Mail prices for mailpieces containing hazardous materials that are not eligible for air transportation.

* * * * *

Appendix C

USPS Packaging Instructions for Mailable Hazardous Materials

* * * * *

USPS Packaging Instructions 1A

Toy Propellant Devices

* * * * *

Required Authorization

[Revise the text to read as follows:]

Prior written permission must be obtained from the following:

DIRECTOR, PRODUCT CLASSIFICATION
USPS HEADQUARTERS
475 L'ENFANT PLAZA SW, ROOM 4446
WASHINGTON, DC 20260

* * * * *

Documentation

* * * * *

[Revise the last sentence of the Note to read as follows:]

Note: ***At the time of mailing, the mailer must present to the Postal Service acceptance clerk a legible photocopy of the Product Classification director's approval letter.

USPS Packaging Instructions 1B

Safety Fuse

* * * * *

Required Authorization

[Revise the text to read as follows:]

Prior written permission must be obtained from the following:

DIRECTOR, PRODUCT CLASSIFICATION
USPS HEADQUARTERS
475 L'ENFANT PLAZA SW, ROOM 4446
WASHINGTON, DC 20260

* * * * *

Documentation

* * * * *

[Revise the last sentence of the Note to read as follows:]

Note: ***At the time of mailing, the mailer must present to the Postal Service acceptance clerk a legible photocopy of the Product Classification director's approval letter.

* * * * *

USPS Packaging Instructions 3C

Flammable Liquid or Gas Lighters

* * * * *

Required Authorization

[Add a new last sentence to the text of section "Required Authorization" to read as follows:]

***The vendor in whose name the authorization is being sought must submit a written request to the director of Pricing and Classification Service Center (see 213 for address).

* * * * *

Marking

* * * * *

[Revise the Note in section "Marking" to read as follows:]

Note: At the time of the mailer's first mailing at each Postal Service facility, the mailer must present to that facility a legible photocopy of the PCSC director's approval letter.

* * * * *

USPS Packaging Instructions 3D

Ethanol-based Flammable Liquids and Solids

[Revise the introductory text to read as follows:]

Certain limited quantities of flammable liquids and solids containing ethyl alcohol are permitted in the domestic mail via air transportation, with special authorization from the director, Product Classification, when all applicable requirements in 343.27 are met.

* * * * *

Pull-Out Information

Fraud

Missing, Lost, or Stolen U.S. Money Order Forms

Do Not Cash — Upon Receipt, Notify Local Postal Inspectors

Provide this listing to all Postal Service™ employees responsible for accepting and cashing postal money orders. Destroy all interim notices when the numbers listed appear in the *Postal Bulletin*. The new money order serial numbers consist of the first 10 digits. The eleventh digit is a check digit only.

Do not cash outdated money orders **104 151 601 to 692 600 000**. Advise holders to send invalid money orders to Canada Post Corporation, Ottawa, Canada K1A 0B1. Check for altered dollar amounts by holding money orders to the light.

010 001 0200 to 0299	035 035 4337 to 4399	066 648 2880 to 2899	094 580 7062 to 7099
010 504 1932 to 1999	037 312 7500 to 7599	066 787 3639 to 3699	094 639 4200 to 4299
011 582 1889 to 1899	037 706 9578 to 9599	066 845 7500 to 9999	095 070 7186 to 7199
011 588 2900 to 3099	037 805 3677 to 3699	067 093 3869 to 3899	095 076 8300 to 8399
012 441 0784 to 0799	037 909 5490 to 5499	068 895 0334 to 0399	095 354 6864 to 6899
012 579 5675 to 5699	037 931 4660 to 4699	070 724 4488 to 4499	097 224 1350 to 1599
013 289 6176 to 6199	039 145 6521 to 6595	070 841 9181 to 9199	100 160 3800 to 3899
013 610 0014 to 0099	040 024 3901 to 3999	070 844 2546 to 2599	104 667 6400 to 6499
014 932 1000 to 1099	040 674 7100 to 7199	070 916 1340 to 1399	104 876 8937 to 8999
014 972 0800 to 0899	040 688 8816 to 8899	071 047 5768 to 5799	112 049 4413 to 4499
015 363 0065 to 0099	041 299 6752 to 6799	071 179 9800 to 9899	112 870 9765 to 9799
017 028 3200 to 3299	041 623 8889 to 8899	071 386 3682 to 3699	113 319 2000 to 2099
018 569 5333 to 5399	041 803 6565 to 6599	071 507 6840 to 6899	114 402 3850 to 3899
018 986 5264 to 5299	043 129 1968 to 1997	072 045 9641 to 9699	114 866 5368 to 5397
019 518 2814 to 2899	043 205 5922 to 5999	072 675 8287 to 8299	116 154 2800 to 2899
020 698 5159 to 5199	044 087 3457 to 3499	073 763 0867 to 0876	116 986 4400 to 4499
020 844 7307 to 7399	044 087 4000 to 4099	073 763 0878 to 0887	117 175 1647 to 5169
020 972 8948 to 8999	044 226 2487 to 2512	073 763 0889 to 0898	117 951 4687 to 4699
022 021 9110 to 9181	044 306 4200 to 4299	077 617 5481 to 5499	117 951 5200 to 5299
022 037 1411 to 1499	044 306 4370 to 4599	077 999 4001 to 4090	119 786 3051 to 3064
022 527 9201 to 9210	045 524 4121 to 4298	078 174 4475 to 4499	119 815 8961 to 6199
022 529 1882 to 1899	046 800 9870 to 9899	078 219 4931 to 4999	119 850 7400 to 7499
023 637 7169 to 7199	047 352 4000 to 4099	078 250 4756 to 4799	119 850 7700 to 7999
024 380 4100 to 4199	048 383 7650 to 7659	078 823 8312 to 8399	121 634 0460 to 0499
024 496 6870 to 6896	048 396 3647 to 3699	079 374 0300 to 2499	122 451 9879 to 9899
025 092 0987 to 0999	051 142 0755 to 0799	079 807 2342 to 2399	122 714 6805 to 6900
025 369 5535 to 5599	051 774 8857 to 8899	082 721 0228 to 0254	124 916 0304 to 0499
025 729 1151 to 1199	051 781 2875 to 2885	083 140 5000 to 7499	126 423 0136 to 0169
025 729 1643 to 1799	051 977 7010 to 7023	083 784 8886 to 8899	127 500 2328 to 2399
026 492 3180 to 3199	052 058 7115 to 7199	083 913 6915 to 6999	160 901 2254 to 2299
027 361 0430 to 0499	054 450 1130 to 1167	084 478 3920 to 3999	161 103 6581 to 6599
027 369 4482 to 4495	057 670 0563 to 0599	086 000 8271 to 8299	161 194 2857 to 0899
027 671 8762 to 8776	058 187 3836 to 3899	086 798 3840 to 3849	162 032 4447 to 4499
027 787 9886 to 9899	058 523 3003 to 3099	088 404 4472 to 4499	163 257 1085 to 1099
027 965 9487 to 9499	058 591 1153 to 1299	088 404 5584 to 5699	164 359 2406 to 2499
028 100 8069 to 8099	058 895 3746 to 3799	088 757 8688 to 8699	166 101 1433 to 1499
028 191 1852 to 1999	059 986 0814 to 0899	088 757 9400 to 9499	167 555 5201 to 5212
028 850 3000 to 3199	060 406 7650 to 7699	089 358 2248 to 2257	167 555 5214 to 5299
029 510 1500 to 1599	063 491 8122 to 8199	090 663 9678 to 9684	169 618 6274 to 6299
030 687 0903 to 0999	063 916 9968 to 9999	091 818 0071 to 0099	171 806 6878 to 6893
030 701 3442 to 3499	064 091 4500 to 4599	093 106 9346 to 9355	173 639 4685 to 4699
031 077 4507 to 4799	065 170 0471 to 0499	093 203 0500 to 0599	174 238 2779 to 2799
032 295 7500 to 9999	065 255 7909 to 7999	093 684 3630 to 3699	174 281 9347 to 9399
034 394 1000 to 1099	065 392 6345 to 6399	094 081 5074 to 5099	175 251 2600 to 0699
034 943 0400 to 0799	066 099 2014 to 2099	094 216 2555 to 2599	176 281 7937 to 7950

176 281 7963	to	7999	219 568 7469	to	7487	252 833 3286	to	3297	258 405 5700	to	5799
176 731 6586	to	6599	221 316 5757	to	5799	253 470 3948	to	3999	258 405 5800	to	5899
178 254 5000	to	9999	223 476 3914	to	3999	253 565 7400	to	7499	258 405 5900	to	5999
178 881 9900	to	9999	223 565 4921	to	4957	254 252 2800	to	2899	258 405 6000	to	6099
180 031 2089	to	2098	223 565 4979	to	4999	254 252 2900	to	2999	258 405 6100	to	6199
180 403 7723	to	7741	224 636 4745	to	4765	254 252 3000	to	3099	258 405 6200	to	6299
180 428 4580	to	0599	224 636 4776	to	4799	254 252 3100	to	3199	258 405 6300	to	6399
182 368 7544	to	0599	224 636 4855	to	4885	254 252 3200	to	3299	258 405 6400	to	6499
182 475 3229	to	3258	224 636 4932	to	4948	254 252 3300	to	3399	258 405 6800	to	6899
182 475 3904	to	3933	224 636 4950	to	4962	254 252 3400	to	3499	258 405 6900	to	6999
182 631 0031	to	0099	224 636 4985	to	4999	254 252 3500	to	3599	258 405 7000	to	7099
182 911 6539	to	6600	224 723 0757	to	0799	254 252 3600	to	3699	258 405 7100	to	7199
184 218 2760	to	2799	224 730 2207	to	2299	254 252 3700	to	3799	258 405 7200	to	7299
185 828 1474	to	1499	225 970 0500	to	0599	254 252 3800	to	3899	258 405 7300	to	7399
186 132 7583	to	0599	225 970 0600	to	0699	254 252 3900	to	3999	258 405 7400	to	7499
186 629 0589	to	0599	225 970 0700	to	0799	254 252 4000	to	4099	258 405 7800	to	7899
187 184 6177	to	0199	227 033 8679	to	8699	254 252 4100	to	4199	258 405 7900	to	7999
187 323 8200	to	8299	227 275 9400	to	9999	254 252 4200	to	4299	258 405 8000	to	8099
187 441 6080	to	6099	228 463 2456	to	2499	254 252 4300	to	4399	258 405 8100	to	8199
188 831 6774	to	6799	228 510 4852	to	4899	254 252 4400	to	4499	258 405 8200	to	8299
188 835 6370	to	6399	229 462 8451	to	8475	254 252 4500	to	4599	258 405 8300	to	8399
189 083 1064	to	1099	229 668 5977	to	5999	254 252 4600	to	4699	258 405 8400	to	8499
189 660 9583	to	9599	229 923 9176	to	9199	254 252 4700	to	4799	258 405 8500	to	8599
191 179 0377	to	0399	229 924 6696	to	6699	254 252 4800	to	4899	258 405 8600	to	8699
192 050 5762	to	5781	230 051 9500	to	9999	254 252 4900	to	4999	258 405 8700	to	8799
194 456 8600	to	0699	236 366 2431	to	2499	254 565 7607	to	7700	258 405 8800	to	8899
195 194 6881	to	6899	236 607 6882	to	6899	254 907 1203	to	1299	258 405 8900	to	8999
195 874 1112	to	1199	236 660 5853	to	5872	255 185 9527	to	9599	258 405 9600	to	9699
196 979 0524	to	0599	239 322 5200	to	5299	255 397 1557	to	1576	258 405 9700	to	9799
197 244 6100	to	6199	239 322 5400	to	5499	255 425 2989	to	2998	258 405 9800	to	9899
197 244 6300	to	6399	239 322 5600	to	5699	255 728 6412	to	6499	258 405 9900	to	9999
197 244 6400	to	6499	239 322 5800	to	5899	255 728 9842	to	9899	259 014 9989	to	9999
197 244 6500	to	6599	239 322 5900	to	5999	256 134 9833	to	9839	259 062 4788	to	4798
197 244 6600	to	6699	239 607 4783	to	4799	256 134 9840	to	9849	259 218 1400	to	1499
197 244 6700	to	6799	240 593 1879	to	1899	256 134 9850	to	9859	259 218 1500	to	1599
197 244 6800	to	8999	242 591 2048	to	2099	256 134 9860	to	9869	259 218 1600	to	1699
198 285 2556	to	2566	242 735 0388	to	0398	256 134 9870	to	9879	259 590 5654	to	5699
199 105 0778	to	0799	242 951 7276	to	7299	256 134 9880	to	9889	259 670 8268	to	8299
199 678 2968	to	2999	243 535 6370	to	6399	256 134 9890	to	9899	259 835 6238	to	6399
202 748 5133	to	5199	244 004 9985	to	9999	256 247 6900	to	6999	259 835 6701	to	6799
202 748 5245	to	5299	244 004 9985	to	9999	256 550 5536	to	5545	260 224 4600	to	4699
202 748 5300	to	5399	244 268 9765	to	9799	256 799 2257	to	2299	260 224 5941	to	5999
202 748 5400	to	5499	244 347 4471	to	4499	257 154 8763	to	8799	260 310 2821	to	2899
203 256 1240	to	1299	249 056 1551	to	1599	257 154 8800	to	8899	260 452 0010	to	0022
204 230 3577	to	3595	249 336 9438	to	9499	257 765 4567	to	4599	260 452 0049	to	4299
205 019 0174	to	0199	249 399 4000	to	4099	257 765 4610	to	4696	260 553 8200	to	8299
206 936 3184	to	3199	249 399 4100	to	4199	257 765 4737	to	4799	260 553 8600	to	8699
207 196 9900	to	9999	249 399 4200	to	4299	257 792 7800	to	7889	260 553 9600	to	9799
207 204 0700	to	0799	249 399 4300	to	4399	257 792 7900	to	7999	260 553 9800	to	9899
207 204 0800	to	0899	249 399 4400	to	4499	257 792 8000	to	8099	260 553 9900	to	9999
207 514 3857	to	3899	249 399 4500	to	4599	257 856 9863	to	9899	260 761 1603	to	1662
208 556 4707	to	4799	249 399 4600	to	4699	258 103 1773	to	1782	261 183 2100	to	2299
210 057 4038	to	4047	249 399 4700	to	4799	258 405 1800	to	1899	261 426 0408	to	0499
210 221 0548	to	0599	249 399 4800	to	4899	258 405 1900	to	1999	262 082 8000	to	8099
214 061 4711	to	4724	249 399 4900	to	4999	258 405 3300	to	3399	262 082 8100	to	8199
214 303 6311	to	6325	250 159 7502	to	7599	258 405 3400	to	3499	262 082 8200	to	8299
214 303 6239	to	6258	250 566 9644	to	9699	258 405 3500	to	3599	262 082 8300	to	8399
214 877 4251	to	4273	250 661 8425	to	8499	258 405 3700	to	3799	262 082 8400	to	8499
215 252 3918	to	3992	251 335 5731	to	5799	258 405 3800	to	3899	262 288 7302	to	7399
217 585 1400	to	1499	251 379 2380	to	2399	258 405 3900	to	3999	262 288 7400	to	7499
218 698 2157	to	2199	252 005 7626	to	7699	258 405 4000	to	4099	262 288 9900	to	9999
218 746 0800	to	0899	252 421 8401	to	8499	258 405 4100	to	4199	262 337 2600	to	2699
219 095 0100	to	0399	252 464 2810	to	2899	258 405 4200	to	4299	262 337 2700	to	2700
219 389 1885	to	1899	252 612 3683	to	3699	258 405 4600	to	4699	262 337 2800	to	2800
219 568 7435	to	7456	252 469 2125	to	2199	258 405 5600	to	5699	262 337 2900	to	2900

262 337 3000	to	3099	262 337 9500	to	9599	279 517 9623	to	9699	399 070 0872	to	0899
262 337 3100	to	3199	262 337 9600	to	9699	282 667 2500	to	4999	399 156 7119	to	7199
262 337 3200	to	3299	262 337 9700	to	9799	302 000 0000	to	9999	399 203 5064	to	5099
262 337 3300	to	3399	262 337 9800	to	9899	349 746 2056	to	2099	399 296 9910	to	9999
262 337 3400	to	3499	262 337 9900	to	9999	350 518 7350	to	7374	399 396 8935	to	8999
262 337 3500	to	3599	262 472 3188	to	3199	360 011 1690	to	1699	399 792 7775	to	7799
262 337 3600	to	3699	262 472 3200	to	3299	360 168 6008	to	6099	399 792 8300	to	8399
262 337 3700	to	3799	262 546 3100	to	3199	360 173 8800	to	8899	400 427 1051	to	1999
262 337 3800	to	3899	262 546 3200	to	3299	360 324 2326	to	2399	401 045 1505	to	1549
262 337 3900	to	3999	262 546 3300	to	3399	362 861 3064	to	3099	401 045 1571	to	1599
262 337 4000	to	4099	262 546 3400	to	3499	373 006 2176	to	2199	401 294 2700	to	2799
262 337 4100	to	4199	262 546 3500	to	3599	374 768 2600	to	2699	401 310 9505	to	9599
262 337 4200	to	4299	262 546 3600	to	3699	375 169 4400	to	4599	401 382 5312	to	5399
262 337 4300	to	4399	262 546 3900	to	3999	375 829 3400	to	3499	402 578 7876	to	7899
262 337 4400	to	4499	262 546 4300	to	4399	375 851 9100	to	9199	403 125 6744	to	6799
262 337 4500	to	4599	262 546 4400	to	4499	376 196 0911	to	0999	403 260 7000	to	7499
262 337 4600	to	4699	262 546 4500	to	4599	378 085 3679	to	3699	403 280 6470	to	6499
262 337 4700	to	4799	262 546 4600	to	4699	378 351 1063	to	1099	403 685 8600	to	8699
262 337 4800	to	4899	262 546 4700	to	4799	379 843 5100	to	5199	404 003 0300	to	0399
262 337 4900	to	4999	262 546 4800	to	4899	380 093 9600	to	9699	404 041 8838	to	8899
262 337 5000	to	5099	262 546 4900	to	4999	380 165 1165	to	1199	404 071 4268	to	4299
262 337 5100	to	5199	262 546 7100	to	7199	381 325 4500	to	4599	404 347 5356	to	5399
262 337 5200	to	5299	262 546 7200	to	7299	381 604 2510	to	2699	404 347 5548	to	5599
262 337 5300	to	5399	262 546 7300	to	7399	381 645 9525	to	9599	404 726 4500	to	4599
262 337 5400	to	5499	262 546 7400	to	7499	383 314 3968	to	3999	404 961 5001	to	5199
262 337 5500	to	5599	262 546 9800	to	9899	383 892 1000	to	1344	405 325 0188	to	0198
262 337 5600	to	5699	262 546 9900	to	9999	383 892 1382	to	1399	406 009 4587	to	4599
262 337 5700	to	5799	262 567 1788	to	1799	384 925 3641	to	3654	406 260 6830	to	6899
262 337 5800	to	5899	263 254 2500	to	2500	385 568 2331	to	2399	406 459 6641	to	6999
262 337 5900	to	5999	263 340 0000	to	0099	385 599 7554	to	7575	406 733 3000	to	3999
262 337 6000	to	6099	263 340 0100	to	0199	385 774 2024	to	2099	407 545 1557	to	1599
262 337 6100	to	6199	263 340 0500	to	0599	386 624 1412	to	1599	407 594 0412	to	0599
262 337 6200	to	6299	263 340 0600	to	0699	386 883 8936	to	8999	407 692 9100	to	9299
262 337 6300	to	6399	263 340 2700	to	2799	387 314 5574	to	5599	407 959 2190	to	2199
262 337 6400	to	6499	263 340 2800	to	2899	387 837 6300	to	6399	408 265 2275	to	2288
262 337 6500	to	6599	263 340 3000	to	3099	388 828 0656	to	0699	408 499 7700	to	7799
262 337 6600	to	6699	264 341 2360	to	2399	389 696 2400	to	2799	408 499 7900	to	7999
262 337 6700	to	6799	264 380 4000	to	4099	389 846 3104	to	3135	408 682 8484	to	8599
262 337 6800	to	6899	264 380 4100	to	4199	389 846 3145	to	3195	408 698 7015	to	7099
262 337 6900	to	6999	264 799 6049	to	6099	389 887 9211	to	9230	409 072 3941	to	3999
262 337 7000	to	7099	264 860 7832	to	7868	389 887 9234	to	9299	410 491 2311	to	2399
262 337 7100	to	7199	265 127 3658	to	3699	390 001 3182	to	3199	410 694 8400	to	8599
262 337 7200	to	7299	265 380 7111	to	7137	390 001 3500	to	3699	410 775 1500	to	1599
262 337 7300	to	7399	265 444 4762	to	4799	390 545 5974	to	5999	410 795 7927	to	7999
262 337 7400	to	7499	265 548 7074	to	7099	391 104 6146	to	6199	410 867 0917	to	0966
262 337 7500	to	7599	266 106 0000	to	2499	391 574 1466	to	1499	410 867 0970	to	0999
262 337 7600	to	7699	266 129 5809	to	5899	391 783 3020	to	3599	411 868 1023	to	1199
262 337 7700	to	7799	266 673 0000	to	2499	391 792 6100	to	6199	411 922 2322	to	2399
262 337 7800	to	7899	266 749 7900	to	7999	392 668 2956	to	2999	412 193 0900	to	0999
262 337 7900	to	7999	266 868 0952	to	0999	392 854 8500	to	8899	412 395 8599	to	8699
262 337 8000	to	8099	266 868 1028	to	1099	393 584 7566	to	7699	412 485 6500	to	6599
262 337 8100	to	8199	266 868 1100	to	1199	393 650 0074	to	0099	412 485 6610	to	6699
262 337 8200	to	8299	266 868 1200	to	1299	393 838 8316	to	8499	412 885 5953	to	5999
262 337 8300	to	8399	267 296 1237	to	1299	393 893 6007	to	6099	414 193 3608	to	3674
262 337 8400	to	8499	267 324 8946	to	8998	394 126 6907	to	6999	414 193 3677	to	3699
262 337 8500	to	8599	268 072 1203	to	1299	394 189 0405	to	0599	414 411 7348	to	7399
262 337 8600	to	8699	271 660 4333	to	4400	394 822 3243	to	3278	414 640 0757	to	0799
262 337 8700	to	8799	273 520 0000	to	9999	394 990 1810	to	1899	414 965 1727	to	1799
262 337 8800	to	8899	273 520 6000	to	8999	395 343 3264	to	3299	417 302 8104	to	8199
262 337 8900	to	8999	273 775 7700	to	7899	395 373 3035	to	3099	417 387 6532	to	6599
262 337 9000	to	9099	273 882 1913	to	1998	395 396 9649	to	9799	417 496 6800	to	6999
262 337 9100	to	9199	274 750 0300	to	0400	395 970 3240	to	3299	417 871 9250	to	9299
262 337 9200	to	9299	274 782 0549	to	0599	397 622 4054	to	4099	417 930 9533	to	9599
262 337 9300	to	9399	279 517 9330	to	9399	397 819 8902	to	8999	418 164 6500	to	6799
262 337 9400	to	9499	279 517 9594	to	9599	398 149 7200	to	7699	418 423 9863	to	9899

418 633 5922	to	5999	443 127 3648	to	3699	462 152 0107	to	0299	479 667 6190	to	6199
418 719 8520	to	8599	443 127 4000	to	4099	462 274 1072	to	1099	479 748 9680	to	9699
418 744 2235	to	2299	443 673 7900	to	7999	462 277 8373	to	8399	479 860 7000	to	7199
418 962 2848	to	2899	443 800 9335	to	9399	462 554 6051	to	6099	480 526 2000 to 2099		
419 543 0286	to	0299	444 382 8822	to	8899	463 011 5529	to	5540	480 640 6330	to	6399
419 730 0300	to	0399	444 390 1667	to	1699	463 176 4115	to	4199	480 658 0568	to	0599
420 277 0015 to 0049			444 457 3854	to	3899	463 176 4229	to	4299	480 689 5100	to	5199
420 599 0734	to	0798	450 048 4173 to 4199			463 185 2600	to	2799	481 072 9463	to	9499
420 661 4115	to	4199	450 048 4442	to	4699	463 227 7711	to	7799	481 673 0074	to	0095
420 758 9500	to	9699	450 560 5173	to	5199	463 414 4869	to	4899	482 527 1500	to	1599
420 969 3951	to	3971	450 620 3077	to	3099	463 808 3484	to	3499	482 541 5255	to	5299
420 969 3973	to	3999	450 620 3135	to	3199	463 945 7400	to	7899	482 729 6800	to	6899
421 116 3565	to	3599	450 780 2716	to	2799	464 629 9000	to	9399	483 363 7207	to	7299
421 130 9300	to	9399	450 801 2700	to	2799	464 711 4332	to	4399	483 402 2356	to	2399
421 313 4500	to	4999	451 109 2967	to	2984	465 692 3963	to	3999	483 486 5100	to	5199
421 364 5537	to	5599	451 115 4110	to	4125	465 698 8300	to	8599	483 632 1521	to	1599
421 656 2609	to	2699	451 115 4127	to	4199	465 743 7745	to	7799	483 632 2600	to	2799
421 988 9700	to	9799	451 746 0700	to	0799	466 798 6056	to	6067	483 849 1615	to	1699
422 172 4667	to	4699	452 265 0074	to	0099	467 147 4300	to	4399	484 174 4803	to	5299
422 484 4212	to	4299	452 265 0246	to	0299	468 079 5782	to	5799	484 323 8900	to	9199
422 556 1270	to	1299	452 265 0335	to	0999	469 067 2817	to	2899	484 680 5000	to	5038
422 587 7024	to	7099	452 509 1169	to	1199	469 127 8000	to	8199	484 680 5040	to	5074
422 819 7533	to	7599	452 855 6471	to	6499	469 213 0359	to	0399	484 680 5077	to	5099
422 842 5073	to	5087	452 890 4679	to	4799	469 213 0500	to	0599	485 029 4913	to	4999
422 907 7563	to	7599	452 900 8215	to	8238	469 561 8011	to	8099	486 176 0600	to	0699
424 500 6050	to	6099	453 117 9146	to	9199	469 658 1961	to	1999	486 559 7555	to	7599
424 641 8500	to	8599	453 334 3631	to	3699	469 666 9900	to	9999	486 696 3023	to	3199
424 871 6600	to	6699	453 603 7841	to	7891	469 678 1900	to	1999	488 173 7900	to	7999
425 298 2352	to	2399	453 650 1140	to	1199	469 781 4900	to	4999	488 206 4100	to	4199
425 418 4269	to	4299	453 741 1300	to	1399	469 947 6960	to	6999	488 226 0200	to	0299
425 418 4405	to	4499	454 013 2919	to	2999	470 755 5800 to 5818			488 709 3906	to	3999
426 547 4566	to	4599	454 186 2411	to	2499	471 918 0300	to	0999	488 855 8359	to	8399
427 412 6337	to	6499	454 268 4883	to	4899	471 985 2408	to	2419	489 181 8963	to	8999
427 481 0900	to	0999	454 302 5400	to	5499	472 191 6700	to	6799	489 223 2000	to	2099
428 027 2742	to	2752	454 490 8300	to	8399	472 270 2555	to	2599	489 311 1930	to	1999
429 474 4172	to	4199	454 547 7434	to	7499	472 987 0213	to	0241	489 318 6200	to	6300
429 889 2900	to	2999	454 922 4867	to	4895	472 987 0290	to	0299	489 384 0027	to	0099
430 150 4401 to 4599			455 221 1348	to	1499	473 151 2069	to	2199	489 427 0658	to	0899
430 172 9800	to	9899	455 364 2147	to	2199	473 666 9138	to	9199	489 997 5252	to	5299
430 177 1900	to	2099	455 399 5400	to	5499	473 952 3429	to	3499	490 669 5850 to 6099		
430 444 9500	to	9699	455 476 0676	to	0699	474 108 5402	to	5499	490 717 7080	to	7099
430 664 4070	to	4099	455 543 0618	to	0699	474 356 5193	to	5299	490 721 6000	to	6099
432 168 8419	to	8499	456 410 9006	to	9099	474 949 3366	to	3399	490 793 1500	to	2099
432 708 6800	to	6999	456 470 4146	to	4299	475 134 9362	to	9399	490 886 8171	to	8199
432 744 1544	to	1599	456 619 4460	to	4499	475 167 9667	to	9699	490 977 9221	to	9240
432 995 9775	to	9799	457 333 2686	to	2699	475 319 3415	to	3499	491 258 8100	to	9099
433 003 5800	to	5899	457 729 1767	to	1777	475 319 3649	to	3799	491 567 1376	to	1399
433 757 3047	to	3099	457 937 8615	to	8699	475 340 6400	to	6599	492 254 4800	to	4899
433 765 4003	to	4099	458 028 9810	to	9899	475 424 8410	to	8499	492 283 5100	to	5199
434 482 7060	to	7199	458 057 2712	to	2999	475 629 9156	to	9199	492 610 6813	to	6899
434 513 2386	to	2399	458 069 9537	to	9599	475 850 6101	to	6199	493 394 5568	to	5599
434 968 3076	to	3092	458 069 9665	to	9699	475 875 2500	to	2599	493 470 2562	to	2599
435 303 1831	to	1842	458 337 5222	to	5299	476 169 8264	to	8299	493 473 7700	to	7799
435 303 1986	to	1999	458 354 7653	to	7999	476 189 3000	to	3499	493 716 2153	to	2199
435 666 6092	to	6399	458 671 8678	to	8699	476 331 2480	to	2499	494 206 2972	to	2999
436 082 6400	to	6899	458 671 8721	to	8798	477 289 8601	to	8699	494 217 3446	to	3999
436 160 6441	to	6499	458 847 5044	to	5999	477 681 5206	to	5299	494 224 0500	to	0599
437 316 7115	to	7199	459 274 7624	to	7699	478 010 4243	to	4268	495 145 0600	to	0699
437 427 0500	to	3499	459 365 5432	to	5499	478 010 4270	to	4291	496 209 7425	to	7499
439 179 2300	to	2399	459 378 5764	to	5799	478 450 5071	to	5099	496 213 8728	to	8799
439 310 0458	to	0499	459 472 4816	to	4999	478 469 7838	to	7858	496 474 5226	to	5248
440 698 1947 to 1999			460 349 6878 to 6899			478 469 7883	to	7899	497 053 8517	to	8699
440 858 6300	to	6399	460 550 1909	to	1999	479 280 9800	to	9899	497 854 8673	to	8699
440 858 6420	to	7299	460 997 5234	to	5299	479 365 9116	to	9176	498 449 8888	to	8899
441 199 1655	to	1699	461 973 6443	to	6499	479 412 9900	to	9999	498 929 8285	to	8499

498 936 5310	to	5399	602 555 2400	to	2799	623 917 0000	to	0099	644 112 9839	to	9899
499 016 5425	to	5499	602 829 7061	to	7099	623 917 0200	to	0299	644 373 9083	to	9099
499 440 8575	to	8899	603 483 9572	to	9599	624 468 5288	to	5299	644 380 1460	to	1499
499 731 6717	to	6799	603 490 7200	to	7299	624 665 3162	to	3198	644 733 4715	to	4799
500 064 1858	to	1869	603 678 7100	to	7199	625 088 6735	to	6799	644 900 9712	to	9799
500 070 5725	to	7799	603 678 7662	to	7699	625 916 9500	to	9799	644 901 0109	to	1299
501 058 0016	to	0026	603 678 7902	to	7999	625 968 8956	to	8999	644 901 1325	to	1399
501 331 0300	to	0399	603 678 8418	to	8499	627 005 3938	to	3999	644 923 6800	to	7799
501 460 0977	to	0999	603 678 8700	to	9999	627 384 3907	to	4099	644 932 4655	to	4699
502 227 7645	to	7699	604 086 0880	to	0899	627 496 7549	to	7599	645 318 7240	to	7499
502 424 0200	to	4099	604 349 1414	to	1499	627 708 3605	to	3699	645 333 1766	to	1799
502 424 0600	to	0699	604 503 7776	to	7799	627 776 2500	to	2599	645 790 8632	to	8699
502 496 6923	to	6999	605 520 9037	to	9099	628 226 3100	to	3199	645 821 0657	to	0699
503 003 2700	to	2899	605 685 4010	to	4099	628 814 4702	to	4799	645 930 7948	to	7999
503 194 5144	to	5153	605 988 6467	to	6499	628 851 9689	to	9699	645 975 0737	to	0762
503 790 9922	to	9948	607 689 7951	to	7960	629 510 7200	to	7299	646 242 6200	to	6299
504 045 4030	to	4099	607 728 1276	to	1299	629 964 4200	to	4294	646 270 7639	to	7799
504 166 0200	to	0599	608 727 7100	to	7199	630 389 3056	to	3071	646 798 4000	to	4999
504 240 1062	to	1399	608 727 7273	to	7599	630 463 0588	to	0599	647 048 7035	to	7099
504 805 3300	to	3499	608 813 9950	to	9999	631 459 9117	to	9199	647 049 2900	to	2999
505 096 0662	to	0699	609 067 5325	to	5399	631 762 9325	to	9399	647 398 8300	to	8399
505 893 7739	to	7799	609 067 5488	to	5499	632 217 4933	to	4999	647 398 8481	to	8499
505 893 7800	to	7999	609 067 5600	to	5699	632 500 0000	to	640 3999	647 437 3000	to	4999
506 124 0800	to	0999	609 289 6123	to	6199	633 110 4165	to	4199	647 811 2188	to	2199
506 165 7027	to	0099	609 438 4400	to	4499	633 110 4303	to	4499	648 009 6057	to	6099
506 502 5209	to	5299	609 493 1100	to	1199	633 438 6429	to	6599	648 163 5300	to	5499
506 756 1682	to	1699	609 766 8091	to	8999	633 588 7173	to	7182	648 722 5283	to	5299
506 756 1700	to	1799	609 825 4100	to	4115	634 725 0700	to	0799	648 892 3164	to	3199
506 756 1800	to	1899	609 884 2981	to	2999	634 803 3239	to	3299	649 100 3989	to	3999
506 836 5326	to	5399	609 893 1000	to	1099	634 807 2474	to	2499	649 647 0370	to	0399
508 488 6226	to	6299	610 092 3200	to	3299	634 827 5900	to	5999	649 647 0522	to	0599
508 789 8332	to	8399	610 582 4200	to	4299	634 886 3428	to	3499	649 647 5237	to	5399
508 789 8400	to	8499	611 879 6939	to	6999	635 559 3449	to	3499	649 647 9100	to	9299
509 909 0425	to	0435	612 291 8013	to	8099	636 289 6214	to	6299	649 666 7800	to	8299
510 150 2400	to	2499	612 751 5171	to	5199	636 634 8007	to	8042	650 114 7707	to	7719
510 381 3200	to	3299	612 751 5226	to	5299	637 150 1200	to	1299	650 130 3400	to	3599
510 587 9500	to	9599	612 751 6083	to	6099	637 562 5828	to	5899	650 213 0406	to	0499
510 587 9659	to	9699	612 751 6268	to	6299	638 042 1647	to	1699	650 555 1749	to	1799
510 269 9770	to	9999	612 751 6572	to	6599	638 049 4984	to	4999	650 564 1900	to	1999
511 021 5042	to	5099	612 774 2111	to	2199	638 318 1115	to	1199	650 627 4212	to	4299
511 021 5100	to	5199	612 774 2254	to	2299	638 318 1453	to	1499	650 736 2043	to	2099
511 468 1747	to	1799	612 774 2500	to	2599	638 885 0000	to	0299	650 739 1540	to	1699
511 844 0100	to	0199	614 469 0979	to	0999	638 903 4362	to	4373	651 741 4415	to	4499
511 844 0340	to	0399	614 474 3000	to	3099	639 415 1929	to	1999	651 882 2800	to	2899
512 805 3913	to	3919	614 521 3490	to	3499	639 415 2019	to	2099	652 754 6317	to	6399
513 046 0700	to	0726	614 645 1800	to	1899	639 420 6200	to	6299	653 131 4945	to	4999
513 149 0600	to	0699	614 832 1100	to	2099	639 469 3517	to	3799	653 426 3300	to	3399
513 445 3000	to	3199	615 017 7505	to	7599	639 605 2143	to	2199	653 455 4874	to	4899
513 466 2034	to	2044	617 711 6609	to	6699	639 657 8600	to	8799	654 238 0000	to	0399
513 539 9052	to	9099	617 760 5266	to	5299	640 289 7500	to	7599	654 404 3065	to	3092
513 539 9267	to	9299	617 813 3601	to	3699	640 289 7700	to	7999	654 962 2900	to	3199
513 539 9800	to	9899	618 840 9200	to	9299	641 170 4420	to	4499	655 103 5081	to	5199
513 539 9985	to	9999	619 551 7229	to	7299	641 318 3133	to	3199	655 523 2600	to	2999
513 606 5459	to	5490	619 859 3000	to	3099	641 378 6500	to	6999	656 305 2448	to	2499
513 812 1751	to	1799	620 073 9400	to	9499	641 383 8739	to	8799	657 347 4438	to	4999
514 103 3600	to	3699	621 614 7907	to	7930	641 877 3187	to	3299	657 710 8100	to	8999
514 103 3700	to	3799	621 614 7932	to	7999	641 877 3310	to	3399	657 780 0985	to	0999
514 103 3800	to	3899	621 648 8021	to	8199	642 355 8094	to	8199	658 586 1400	to	1499
600 645 3223	to	3299	621 648 8500	to	8599	642 355 8308	to	8999	658 877 8000	to	8199
601 339 1200	to	1399	621 904 8351	to	8599	642 900 0018	to	0099	658 880 8000	to	8199
601 653 5884	to	5899	621 916 1978	to	1989	643 030 6254	to	6299	659 398 7300	to	7399
601 661 7700	to	7799	622 989 8032	to	8099	644 066 0882	to	0899	659 706 8113	to	8199
601 682 5343	to	5399	623 076 9300	to	9399	644 069 0600	to	0699	659 846 7837	to	7899
601 928 1600	to	1699	623 819 5006	to	5099	644 077 7506	to	7699	660 510 4100	to	4199
602 512 2972	to	2999	623 895 8200	to	8399	644 085 8157	to	8199	660 673 0400	to	0599

661 488 5000	to	5099	686 372 3200	to	3299	702 254 9300	to	9399	805 885 8411	to	8499
661 609 9100	to	9199	686 644 5879	to	5899	702 264 7569	to	7599	806 087 1100	to	1499
661 716 9420	to	9499	686 899 1371	to	1399	702 519 0513	to	0524	806 268 9275	to	9299
661 906 6522	to	6599	686 931 7636	to	7699	702 713 1800	to	1809	806 534 3400	to	3477
662 021 8332	to	8399	687 601 0973	to	0999	702 821 5730	to	5799	807 342 3283	to	3399
662 068 0700	to	0899	687 614 6774	to	6799	702 821 5805	to	5899	808 086 7100	to	7199
662 553 0774	to	0799	688 120 9000	to	9999	702 844 6975	to	6994	808 090 3440	to	3499
663 078 7034	to	7099	688 314 3107	to	3191	702 846 6331	to	6399	808 325 5161	to	5699
663 763 5300	to	5399	690 291 1361	to	1371	702 848 3900	to	3999	808 784 8000	to	8299
663 883 7039	to	7499	690 788 2877	to	2899	702 857 7302	to	7499	830 125 0672	to	0699
663 938 9200	to	9299	690 893 5344	to	5399	702 878 0114	to	0199	830 602 5800	to	5999
664 253 8000	to	8499	690 893 5512	to	5599	703 364 1707	to	1799	830 610 3700	to	3799
664 656 3055	to	3099	690 904 1300	to	1599	740 002 7710	to	7719	830 983 3500	to	3599
665 174 6400	to	6499	690 941 6000	to	6199	740 037 6730	to	6800	830 983 3635	to	3699
665 274 8208	to	8299	691 313 6383	to	6399	740 119 2275	to	2284	831 354 1387	to	1399
665 669 5400	to	5499	691 313 6600	to	6699	740 130 6688	to	6698	831 815 8240	to	8299
666 132 8226	to	8299	691 582 8003	to	8099	740 144 2780	to	2795	832 525 3810	to	3899
666 696 2209	to	2299	691 664 1800	to	1999	740 241 9049	to	9099	833 159 1884	to	1899
666 696 2309	to	2399	691 664 2400	to	2499	740 252 9265	to	9294	833 456 2567	to	2599
667 032 9300	to	9399	692 727 9362	to	9399	740 255 1718	to	1799	833 566 3015	to	3071
667 729 5529	to	5599	692 798 1800	to	1899	740 274 2602	to	2619	834 130 5200	to	5299
668 383 8400	to	8699	693 249 0779	to	0799	740 277 0366	to	0392	834 316 5444	to	5499
670 368 3400	to	3499	693 249 0877	to	1699	740 332 7658	to	7671	834 354 8747	to	8766
670 369 7336	to	7399	693 445 0566	to	0999	740 348 6641	to	6658	834 354 8824	to	8838
670 750 7169	to	7199	693 448 8500	to	8999	740 351 4790	to	4799	835 269 5700	to	5799
671 046 6200	to	6399	693 645 9583	to	9599	740 374 7416	to	7499	835 496 7303	to	7399
671 251 5448	to	5499	693 965 4200	to	4299	740 470 2420	to	2443	835 539 5200	to	5999
671 926 5600	to	5799	695 741 2906	to	2999	740 514 0300	to	0499	835 813 3015	to	3099
672 444 2000	to	2999	695 947 8518	to	8599	740 523 7432	to	7449	837 672 8967	to	8999
672 828 3410	to	3499	696 662 8247	to	8299	740 535 1555	to	1580	837 784 3282	to	3299
673 167 5776	to	5799	697 447 8285	to	8296	740 557 3570	to	3579	838 176 8377	to	8399
675 464 3700	to	3799	698 042 4816	to	4899	740 650 4104	to	4140	838 518 1257	to	1299
675 464 4000	to	4199	698 131 2138	to	2157	740 684 0620	to	0800	839 718 8257	to	8299
676 365 5958	to	5999	698 227 0000	to	0099	740 701 6105	to	6114	840 323 0600	to	0699
676 669 1024	to	1099	700 065 2570	to	2599	740 705 9790	to	9799	840 875 6235	to	6299
677 126 6734	to	6799	700 065 4800	to	4899	740 726 6400	to	6500	840 910 0900	to	0999
677 333 9979	to	9999	700 190 3350	to	3359	740 748 8319	to	8329	841 349 5000	to	5099
677 466 1088	to	1099	700 228 6048	to	6099	740 765 3306	to	3399	841 805 7747	to	7899
678 071 4500	to	4799	700 650 0452	to	0499	740 774 8434	to	8499	841 805 7944	to	8099
678 096 7531	to	7599	700 666 1323	to	1349	740 779 4259	to	4299	842 226 0685	to	0695
679 909 2578	to	2599	700 786 9106	to	9142	740 786 1885	to	1899	842 685 4600	to	4699
680 112 9565	to	9599	700 859 0744	to	0758	740 790 5989	to	5999	842 685 4742	to	4999
680 244 0903	to	0999	701 028 6780	to	6899	740 803 4870	to	4879	842 860 0300	to	0399
680 412 6046	to	6099	701 213 3900	to	3999	740 820 4854	to	7836	842 898 5582	to	5599
680 761 6800	to	6899	701 267 2000	to	3999	740 827 7578	to	7594	843 062 7100	to	7199
681 677 0540	to	0699	701 335 7312	to	7399	740 917 7490	to	7499	843 077 6288	to	6299
682 070 1029	to	1099	701 369 2005	to	2050	740 918 5531	to	5549	843 077 6378	to	6399
682 956 6280	to	6299	701 499 2260	to	2299	741 037 8528	to	8551	843 758 5769	to	5778
682 956 6490	to	6599	701 503 2247	to	2299	742 030 6135	to	6149	843 786 2554	to	2699
682 956 6700	to	6799	701 541 2271	to	2299	742 033 2663	to	2674	845 656 8165	to	8199
682 965 1178	to	1199	701 553 6557	to	6599	742 040 3300	to	3309	845 727 2100	to	2199
682 965 1201	to	1299	701 578 7460	to	7469	742 112 8155	to	8199	845 746 2618	to	2635
683 118 2389	to	2399	701 578 7475	to	7499	742 151 5000	to	5014	846 390 7531	to	7599
683 378 2000	to	2099	701 601 3457	to	3499	742 191 4640	to	4649	846 918 0572	to	0599
683 378 2117	to	2299	701 605 5913	to	5999	742 192 5210	to	5224	847 237 7690	to	7699
683 415 1200	to	1499	701 695 3982	to	3999	742 222 9200	to	9210	847 284 2481	to	2499
683 444 8159	to	8199	701 695 4148	to	4199	742 228 9660	to	9669	847 374 7055	to	7065
685 154 7780	to	7789	701 695 4227	to	4299	742 247 6980	to	6989	847 374 7055	to	7065
685 297 7645	to	7699	701 708 1741	to	1799	742 290 0936	to	0950	847 636 5304	to	5399
685 623 5264	to	5299	701 736 3966	to	3999	742 302 7600	to	7699	847 700 5447	to	5499
685 650 9487	to	9499	701 772 0870	to	0899	742 305 3711	to	3799	847 723 7500	to	7599
685 669 4200	to	4299	701 838 2800	to	2899	742 305 3800	to	3899	849 485 3427	to	3499
685 757 8452	to	8499	701 941 0600	to	0699	742 305 3900	to	3999	849 520 9850	to	9899
686 071 2694	to	2799	702 171 1603	to	1699	742 305 4000	to	4099	849 608 1357	to	1399
686 176 3333	to	3354	702 195 5109	to	5199	742 305 4100	to	4199	849 792 2600	to	2699

850 546 1862 to 1899	869 505 3500 to 3599	909 725 7307 to 7399	920 864 3480 to 3499
851 143 6826 to 6844	869 523 7033 to 7099	909 833 0947 to 0999	920 963 4567 to 4599
851 209 9880 to 9899	869 566 6150 to 6167	910 219 8631 to 8699	921 333 7400 to 7499
851 928 9221 to 9299	869 776 8785 to 8786	910 265 1100 to 1199	921 477 3762 to 3799
852 589 6560 to 6599	869 800 0000 to 999 9999	910 471 7273 to 7299	922 278 1048 to 1399
853 049 3646 to 3699	870 054 4814 to 4899	910 536 2505 to 2599	922 280 2019 to 2099
854 304 4089 to 4999	870 491 4812 to 4849	910 958 7499 to 7599	922 280 2233 to 2299
854 529 2200 to 2299	870 536 5820 to 5829	911 140 1000 to 2199	922 773 0459 to 0499
854 532 0000 to 2999	870 541 7167 to 7239	911 245 2545 to 2599	923 032 7000 to 7399
855 001 6204 to 6249	870 575 8155 to 8999	911 268 9077 to 9099	923 045 3630 to 3699
855 319 9364 to 9399	870 589 0485 to 0494	911 400 8948 to 8999	923 484 3600 to 3699
855 361 3390 to 3399	870 691 7060 to 7099	911 508 1620 to 1799	923 493 9403 to 9599
856 226 0490 to 0499	872 028 4850 to 4899	911 509 9310 to 9399	923 493 9681 to 9699
856 656 5800 to 5999	872 029 9306 to 9399	911 523 3000 to 3999	923 604 4424 to 4499
856 752 0200 to 0299	872 078 3709 to 3799	912 057 9922 to 9999	923 810 7800 to 8299
857 111 1352 to 1399	872 100 0445 to 0459	912 882 0563 to 0899	924 252 1200 to 1299
857 279 3450 to 3499	900 556 4178 to 4199	913 605 2218 to 2299	924 252 1400 to 1499
857 843 4000 to 4099	900 845 0044 to 0099	913 709 2429 to 2499	924 533 0711 to 0799
858 124 7644 to 7699	900 936 0217 to 0299	913 818 3501 to 3999	924 533 2343 to 2399
858 756 3111 to 3299	900 936 0435 to 0499	914 063 4300 to 4399	924 533 2428 to 2499
859 063 8200 to 8699	901 058 5255 to 5280	914 346 7621 to 7644	924 685 1957 to 1999
859 190 0600 to 0644	901 273 1082 to 1099	914 453 1366 to 1399	924 946 6300 to 6699
859 437 5538 to 5599	901 287 5143 to 5199	914 529 6185 to 6299	925 333 5900 to 6099
859 811 2888 to 2899	901 291 2789 to 2799	914 896 4658 to 4699	925 336 2300 to 2399
859 855 8873 to 8999	901 525 7122 to 7199	915 187 8774 to 8779	926 432 5907 to 5999
860 240 8520 to 8599	902 089 1253 to 1299	915 300 2783 to 2799	926 436 3600 to 3699
860 275 3900 to 3999	902 198 9769 to 9799	915 546 6822 to 6999	927 765 6257 to 6299
860 518 9629 to 9699	902 948 1269 to 1299	915 646 5183 to 5199	928 197 8100 to 8199
860 600 0021 to 0999	902 985 0833 to 0899	915 671 3963 to 3980	928 197 8283 to 8299
861 158 2350 to 2599	903 370 6934 to 6999	915 671 3982 to 3999	928 856 2059 to 2068
861 367 5400 to 5499	904 600 6523 to 6599	915 675 2217 to 2299	930 078 5800 to 5899
861 637 6010 to 6099	904 892 0378 to 0399	916 440 3377 to 3399	930 219 1722 to 1799
861 979 7292 to 7499	904 892 0648 to 1299	916 670 6352 to 6399	930 335 7810 to 7819
862 216 6100 to 6199	905 056 2216 to 2299	916 682 5300 to 5399	931 097 9259 to 9299
862 263 9213 to 9299	905 510 6647 to 6799	916 694 1414 to 1499	931 156 1502 to 1579
862 271 0800 to 0999	905 510 6900 to 7099	916 703 0802 to 0821	931 156 1600 to 1625
862 271 5000 to 5099	905 794 0000 to 0199	917 089 0709 to 0799	931 156 1671 to 1699
863 871 5138 to 5199	905 794 0288 to 0299	917 089 0842 to 0899	932 506 6400 to 6599
863 949 5300 to 5399	905 873 6900 to 6999	917 216 2928 to 2999	932 732 1796 to 1799
864 088 8200 to 8299	905 873 7100 to 7299	917 370 6300 to 6499	932 827 9026 to 9099
864 426 3972 to 3999	905 880 8900 to 8999	917 486 4900 to 4999	932 957 2300 to 2399
864 520 6117 to 6136	905 889 7100 to 7199	918 460 0602 to 0699	933 060 6160 to 6189
865 151 0526 to 0599	906 158 1508 to 1599	918 951 7231 to 7299	933 387 2541 to 2561
865 500 4034 to 4099	906 558 8812 to 8899	919 519 2786 to 2799	933 760 3609 to 4199
865 883 6082 to 6099	906 982 2214 to 2299	919 536 0770 to 0799	933 894 0928 to 0999
866 004 3000 to 3999	907 725 8500 to 8599	919 814 3095 to 3199	934 018 2729 to 2741
866 442 4100 to 4899	907 815 0216 to 0257	919 889 5110 to 5134	934 180 0300 to 0399
867 366 9108 to 9118	908 622 4225 to 4235	919 889 5137 to 5176	934 236 3954 to 3999
867 633 7403 to 7499	908 936 9254 to 9299	919 889 5178 to 5199	934 622 8717 to 8999
867 737 5623 to 5699	909 066 4494 to 7499	919 889 5030 to 5070	935 216 0312 to 0399
868 169 4529 to 4599	909 067 7400 to 7499	919 889 5090 to 5099	935 843 2202 to 2247
868 173 8400 to 8599	909 100 1787 to 1799	919 915 2774 to 2787	936 024 8889 to 8899
868 514 9000 to 9099	909 100 1900 to 2099	920 155 4662 to 4687	936 339 4455 to 4499
868 566 9200 to 9299	909 355 0422 to 0499	920 309 9039 to 9199	
869 200 0000 to 9999	909 568 8900 to 9099	920 771 5321 to 5399	
869 387 1150 to 1199	909 568 9300 to 9499	920 857 5500 to 5899	

Missing, Lost, or Stolen Canadian Money Order Forms

Do Not Cash — Upon Receipt, Notify Local Postal Inspectors

Provide this listing to all Postal Service™ employees responsible for accepting and cashing postal money orders. Destroy all interim notices when the numbers listed appear in the *Postal Bulletin*. The new money order serial

numbers consist of the first 9 digits. The tenth digit is a check digit only.

Do not cash outdated money orders **104 151 601 to 692 600 000**. Advise holders to send invalid money orders to Canada Post Corporation, Ottawa, Canada K1A 0B1. Check for altered dollar amounts by holding money orders to the light.

719 869 731	to	9 760	728 702 338	to	2 400	734 950 111	to	0 170	742 325 668	to	5 700
720 227 871	to	7 930	728 915 371	to	5 850	735 120 331	to	0 840	742 408 771	to	8 830
720 227 949	to	7 960	728 953 141	to	3 410	735 283 008	to	3 020	742 512 120	to	2 150
720 368 543	to	8 570	728 954 280	to	4 310	735 293 131	to	3 220	742 684 849	to	4 890
720 392 151	to	2 570	729 169 081	to	9 140	735 635 010	to	5 040	742 839 553	to	9 630
720 556 491	to	6 640	729 363 841	to	3 870	735 783 961	to	3 990	742 913 668	to	3 700
720 558 621	to	8 650	729 682 891	to	3 190	735 803 401	to	3 430	742 917 287	to	7 296
720 575 361	to	5 570	729 838 940	to	9 070	736 005 420	to	5 440	742 921 891	to	1 980
720 590 152	to	0 179	729 839 101	to	9 130	736 366 021	to	6 110	742 983 631	to	3 810
721 638 331	to	9 170	730 077 683	to	7 840	736 624 456	to	4 500	743 020 021	to	0 170
721 815 391	to	5 420	730 109 847	to	9 880	736 670 851	to	1 060	743 206 491	to	6 500
721 969 713	to	9 740	730 373 761	to	3 850	736 767 061	to	7 090	743 235 992	to	6 050
722 072 137	to	2 160	730 501 951	to	2 130	736 767 093	to	7 120	743 940 631	to	0 900
722 378 265	to	8 280	730 519 379	to	9 470	736 982 191	to	2 370	743 978 011	to	8 070
722 413 990	to	4 004	730 569 278	to	9 360	736 982 551	to	2 730	744 234 751	to	4 780
722 764 948	to	4 980	730 711 711	to	1 740	737 110 141	to	0 170	744 499 591	to	9 680
722 825 840	to	5 889	730 722 991	to	3 230	737 185 501	to	5 710	744 626 901	to	6 910
723 153 841	to	3 850	730 845 970	to	5 990	737 317 321	to	7 350	745 388 794	to	8 910
723 237 616	to	7 630	730 888 291	to	8 320	737 517 781	to	7 840	746 446 806	to	6 820
723 331 081	to	1 110	730 927 591	to	7 680	737 628 181	to	8 210	746 818 351	to	8 410
723 496 443	to	6 470	731 307 914	to	7 930	737 634 258	to	4 270	747 245 266	to	5 280
723 967 291	to	7 320	731 402 431	to	2 460	738 361 971	to	1 980	747 364 813	to	4 830
724 655 196	to	5 340	731 407 232	to	7 320	738 447 601	to	7 660	747 501 434	to	1 450
724 711 441	to	1 500	731 588 301	to	8 340	738 648 355	to	8 450	747 739 891	to	0 070
724 711 538	to	1 560	731 767 273	to	7 320	738 849 811	to	9 900	748 148 649	to	8 760
724 793 221	to	3 250	731 781 061	to	1 120	738 892 270	to	2 290	748 259 960	to	9 970
724 908 109	to	8 120	731 837 821	to	7 910	738 997 259	to	7 380	748 565 162	to	5 280
724 937 461	to	7 670	731 841 377	to	1 450	739 161 451	to	1 540	748 874 988	to	5 030
725 163 118	to	3 151	732 018 481	to	8 600	739 219 381	to	9 440	749 137 381	to	7 410
725 202 735	to	2 750	732 067 972	to	8 370	739 740 151	to	0 180	749 190 192	to	0 210
725 398 591	to	8 800	732 188 649	to	8 670	739 793 491	to	3 520	749 685 421	to	5 450
725 464 591	to	4 920	732 193 460	to	3 470	739 793 527	to	3 550	749 846 791	to	6 850
725 475 321	to	5 330	732 201 241	to	1 390	739 942 621	to	2 650	749 993 131	to	3 580
725 711 057	to	1 070	732 220 431	to	0 440	739 999 231	to	9 320	750 071 587	to	1 610
725 738 581	to	8 730	732 355 201	to	5 380	740 011 517	to	1 530	750 408 167	to	8 183
725 981 311	to	1 430	732 472 320	to	2 560	740 030 701	to	0 970	750 438 421	to	8 501
725 987 835	to	7 880	732 541 605	to	1 620	740 261 740	to	1 820	750 743 911	to	4 030
726 060 811	to	0 900	732 572 221	to	2 490	740 265 811	to	6 290	750 779 118	to	9 400
726 391 970	to	2 520	732 586 479	to	6 710	740 299 111	to	9 170	750 910 981	to	1 010
726 484 771	to	4 800	732 994 037	to	4 080	740 299 231	to	9 260	750 960 841	to	0 900
726 493 351	to	5 300	733 163 449	to	3 460	740 329 266	to	9 320	751 296 211	to	6 240
726 504 031	to	4 063	733 297 171	to	7 290	740 889 081	to	9 090	751 539 121	to	9 180
726 504 070	to	4 090	733 446 631	to	7 110	741 010 421	to	0 530	751 541 311	to	1 790
726 504 331	to	4 390	733 474 665	to	4 770	741 113 041	to	3 370	751 757 641	to	7 700
726 563 701	to	4 060	733 704 482	to	4 570	741 373 891	to	4 340	751 936 951	to	7 010
726 599 371	to	9 460	733 751 041	to	1 130	741 452 369	to	2 490	751 951 861	to	1 890
726 626 356	to	6 370	734 009 101	to	9 130	741 492 991	to	3 140	751 999 021	to	9 110
727 182 271	to	2 510	734 290 759	to	0 770	741 553 460	to	3 470	752 139 516	to	9 570
727 416 181	to	6 240	734 389 273	to	9 290	741 764 431	to	4 520	752 182 892	to	2 950
727 481 431	to	1 460	734 440 031	to	0 111	741 764 431	to	4 520	752 206 861	to	7 100
727 749 241	to	9 780	734 797 201	to	7 320	742 178 834	to	8 880	752 295 241	to	5 600
728 382 331	to	2 480	734 939 611	to	9 640	742 325 500	to	5 520	752 731 351	to	1 410

752 767 441	to	7 470	762 593 431	to	3 460	773 208 991	to	9 290	800 427 530	to	7 540
753 008 941	to	9 030	763 155 160	to	5 180	773 231 311	to	1 340	800 872 741	to	2 830
753 194 311	to	4 370	763 178 631	to	8 660	773 348 739	to	8 940	801 349 801	to	9 830
753 620 378	to	0 400	763 506 001	to	6 060	773 348 739	to	8 940	801 676 681	to	7 100
754 013 917	to	3 940	763 522 141	to	2 470	773 575 891	to	5 950	802 967 821	to	7 940
754 161 061	to	1 120	763 717 694	to	7 800	773 852 971	to	3 030	803 217 601	to	7 780
754 358 445	to	8 610	763 826 461	to	6 520	775 373 449	to	3 460	803 729 731	to	9 850
754 410 451	to	0 660	763 900 460	to	0 471	789 257 191	to	7 250	803 747 402	to	7 520
754 438 393	to	8 410	763 900 479	to	0 530	790 448 020	to	8 460	804 138 181	to	8 420
754 493 109	to	3 130	763 917 271	to	7 750	790 597 485	to	7 530	804 428 224	to	8 250
754 664 182	to	4 220	764 125 801	to	5 860	790 911 883	to	1 900	804 682 411	to	2 710
754 816 377	to	6 470	764 284 525	to	4 560	791 057 441	to	7 550	805 272 525	to	2 540
755 487 421	to	7 600	764 526 241	to	6 330	791 239 081	to	9 290	805 523 445	to	3 460
755 592 901	to	3 140	764 601 421	to	1 600	791 374 483	to	4 500	805 745 704	to	5 730
755 790 020	to	0 030	764 650 231	to	0 470	791 387 971	to	8 030	806 452 907	to	2 980
755 791 730	to	1 800	764 984 371	to	4 850	791 447 521	to	7 850	806 744 781	to	4 850
755 926 951	to	7 070	765 003 667	to	3 680	791 451 151	to	1 240	806 982 181	to	2 300
755 934 332	to	4 510	765 042 517	to	2 540	791 500 009	to	0 470	807 764 791	to	4 910
755 957 701	to	8 000	765 194 728	to	4 970	791 771 431	to	1 490	808 089 931	to	9 960
755 962 981	to	3 280	765 387 365	to	7 450	792 004 293	to	4 320	808 656 423	to	6 450
756 035 371	to	5 490	765 541 801	to	2 100	792 018 379	to	8 420	808 753 771	to	3 800
756 301 257	to	1 290	765 638 461	to	8 970	792 070 621	to	0 740	809 189 001	to	9 010
756 371 565	to	1 580	765 647 101	to	7 190	792 145 211	to	5 230	809 886 879	to	6 930
756 876 031	to	6 120	765 813 781	to	4 029	792 391 381	to	1 620	809 890 489	to	0 500
756 876 151	to	6 240	765 879 314	to	9 390	792 452 779	to	2 790	810 323 734	to	3 760
756 970 129	to	0 140	765 954 001	to	4 030	792 772 728	to	2 770	810 367 116	to	7 140
757 059 613	to	9 630	766 120 286	to	0 320	792 903 511	to	3 990	810 526 351	to	6 500
757 078 540	to	8 560	766 125 716	to	5 750	793 282 518	to	2 533	810 806 911	to	6 940
757 086 209	to	6 240	766 158 824	to	8 840	794 041 831	to	2 040	810 807 211	to	7 240
757 240 591	to	0 650	766 388 433	to	8 460	794 397 709	to	7 780	811 423 021	to	3 110
757 277 371	to	7 700	766 509 421	to	9 660	794 581 741	to	2 040	811 517 221	to	7 239
757 291 591	to	2 730	766 572 901	to	3 020	794 592 122	to	2 150	811 721 101	to	1 130
757 964 251	to	4 280	766 748 500	to	8 521	795 032 251	to	2 340	812 025 721	to	5 900
758 067 001	to	7 090	767 024 341	to	4 370	795 796 291	to	6 350	812 093 073	to	3 130
758 105 221	to	5 250	767 326 471	to	6 590	796 070 139	to	0 160	812 100 821	to	0 840
758 324 941	to	5 000	767 332 561	to	2 950	796 143 151	to	3 630	812 465 251	to	5 610
758 593 628	to	3 650	768 009 841	to	9 960	796 159 725	to	9 740	812 918 341	to	8 670
758 709 038	to	9 060	768 011 489	to	1 520	796 169 306	to	9 340	812 918 701	to	8 760
758 744 101	to	4 160	768 177 980	to	7 990	796 373 406	to	3 430	813 050 491	to	0 520
758 850 883	to	0 900	768 391 081	to	1 170	796 602 961	to	3 050	813 073 171	to	3 200
758 860 951	to	1 550	768 661 569	to	1 650	796 708 441	to	8 500	813 398 476	to	8 550
759 152 851	to	2 880	769 000 051	to	0 080	796 886 281	to	6 430	813 713 971	to	4 000
759 740 941	to	1 090	769 050 841	to	0 900	796 901 701	to	2 000	813 858 121	to	8 150
760 004 596	to	4 610	769 159 081	to	9 178	796 975 466	to	5 590	814 789 330	to	9 349
760 118 191	to	8 250	769 737 496	to	7 510	797 272 917	to	2 950	814 984 656	to	4 680
760 155 001	to	5 090	769 778 491	to	8 730	797 519 441	to	9 460	815 016 020	to	6 030
760 378 002	to	8 020	769 827 331	to	7 450	797 519 731	to	0 240	815 199 410	to	9 420
760 692 722	to	2 749	770 216 071	to	6 100	797 535 181	to	5 330	815 240 491	to	0 520
761 055 460	to	5 480	770 723 281	to	3 400	797 646 151	to	6 180	815 755 591	to	5 620
761 169 781	to	9 810	770 790 451	to	0 480	798 040 053	to	0 080	815 755 622	to	5 650
761 504 941	to	5 120	770 915 150	to	5 490	798 055 813	to	5 830	815 806 381	to	6 680
761 516 836	to	6 910	771 455 551	to	5 610	798 055 891	to	5 950	816 126 834	to	6 870
761 613 588	to	3 600	771 609 661	to	9 690	798 326 371	to	6 520	816 156 721	to	6 780
761 688 631	to	8 690	771 932 551	to	2 580	798 339 167	to	9 210	816 580 903	to	0 920
761 805 199	to	5 240	772 057 224	to	7 440	798 562 411	to	2 440	816 945 571	to	5 600
761 826 106	to	6 120	772 162 660	to	3 070	798 632 461	to	2 490	817 253 011	to	3 280
761 881 171	to	1 560	772 718 615	to	8 640	798 807 151	to	7 510	817 763 881	to	4 060
761 975 641	to	5 670	772 940 140	to	0 160	798 944 761	to	5 030	818 330 562	to	0 610
761 975 886	to	5 895	772 970 886	to	0 940	799 118 616	to	8 640	818 459 641	to	9 670
762 304 144	to	4 170	773 009 419	to	9 430	799 133 191	to	3 220	818 926 273	to	6 320
762 324 931	to	4 960	773 112 031	to	2 060	799 177 626	to	7 650	818 950 351	to	0 380
762 439 261	to	9 290	773 125 387	to	5 410	799 854 751	to	5 200	818 962 492	to	2 530
762 524 158	to	4 220	773 179 320	to	9 410	800 044 320	to	4 410	819 032 341	to	2 730
762 584 872	to	4 970	773 202 989	to	3 140	800 211 901	to	2 440	819 127 054	to	7 080

819 278 540	to 8 670	822 703 442	to 3 470	826 226 644	to 6 670	828 539 341	to 9 370
819 544 681	to 4 740	822 900 991	to 1 020	826 582 951	to 3 430	828 732 331	to 2 390
819 928 441	to 8 650	822 925 951	to 6 100	826 720 201	to 0 230	828 807 781	to 7 840
820 034 406	to 4 430	823 284 931	to 4 990	827 005 671	to 5 830	828 830 952	to 0 963
820 070 761	to 1 540	823 293 031	to 3 210	827 287 861	to 7 950	828 939 781	to 0 050
820 191 342	to 1 360	823 556 011	to 6 100	827 291 502	to 1 520	829 002 721	to 2 870
820 274 856	to 4 880	824 078 341	to 8 370	827 575 381	to 5 470	829 005 301	to 5 540
820 600 171	to 0 230	824 156 325	to 6 340	827 609 085	to 9 100	829 080 241	to 0 330
821 172 241	to 2 360	824 511 252	to 1 270	827 619 811	to 9 840	829 160 986	to 1 000
821 229 661	to 9 720	824 588 281	to 8 370	827 883 511	to 3 600	829 176 841	to 6 930
821 229 743	to 9 780	825 140 397	to 0 460	828 160 441	to 0 530	829 471 561	to 1 590
821 903 731	to 3 910	825 409 651	to 9 680	828 376 201	to 6 260	829 561 065	to 1 080
821 927 841	to 7 850	825 472 171	to 2 200	828 441 602	to 1 630	829 566 481	to 6 510
822 505 801	to 5 830	826 042 898	to 2 920	828 539 316	to 9 340	829 569 931	to 9 960

— Criminal Investigations Group, U.S. Postal Inspection Service, 9-7-23

Verifying U.S. Postal Service Money Orders

Follow these steps to cash a Postal Service™ money order:

1. Check that the amount does not exceed the legal limit: \$1,000 for domestic, and \$700 for international Postal Service money orders.
2. Check that the proper security features are present:
 - When held to the light, a watermark of Benjamin Franklin is repeated from top to bottom on the left side.
 - When held to the light, a dark line (security thread) runs from top to bottom with the word “USPS” repeated.
 - When there is discoloration around the dollar amounts, this might indicate the amounts were changed.

These appear in Postal Service Notice 299, *U.S. Postal Money Order Reference Card*, or online at usps.com/shop/money-orders.htm.

3. If the money order seems suspicious, call the U.S. Postal Service Money Order Verification System at 866-459-7822.

Provide this information to local banks and retailers, as they also receive Postal Service money orders for cashing.

— Delivery and Retail
Customer Service Operations, 9-7-23

Counterfeit Canadian Money Order Forms

Do Not Cash

To be posted and used by retail window employees. As directed, destroy previous notices. Destroy all interim notices when the numbers listed appear in the *Postal Bulletin*.

671,819,086	683,594,542	687,262,503
676,612,640	684,683,610	687,262,525
677,891,039	686,619,878	687,262,526
678,282,493	686,619,886	687,287,578
678,916,031	686,619,887	687,287,581
679,552,215	686,794,382	687,287,582
679,694,334	686,794,426	694,063,898
679,751,983	686,794,427	694,063,899
679,800,207	686,794,431	694,063,980
681,130,536	687,262,502	701,321,725
681,844,376		

— Criminal Investigations Group,
U.S. Postal Inspection Service, 9-7-23

Toll-Free Number Available to Verify Canadian Money Orders

The Canada Post Corporation has a toll-free number that cashing agents can call to verify the validity of Canadian Postal Money Orders. The number is 800-563-0444.

This toll-free number is printed on the back of the Canadian Postal Money Orders.

— Criminal Investigations Group,
U.S. Postal Inspection Service, 9-7-23

Other Information

Overseas Military/Diplomatic Mail

Mail addressed to military and diplomatic post offices overseas is subject to certain conditions or restrictions of mailing regarding content, preparation, and handling. The APO/FPO/DPO table outlines these conditions by APO/FPO/DPO ZIP Codes™ through the use of footnoted mailing restrictions codes (see the [Restrictions](#) page following the table).

Acceptance clerks must use the table with the Retail System Software terminal to determine which APO/FPO/DPO ZIP Codes are active and which conditions of mailing apply.

The entries under “Changes” appear in bold in the following APO/FPO/DPO table:

Changes

APO/FPO/DPO	Action	Effective Date	See Restrictions
APO AP 96548	Add C	08/16/2023	A-B-C-C2-F-F1-F3-H-M-R-S-U

We have eliminated “Not Active” entries from the table below to save space and paper.

APO/FPO/DPO Table

APO/FPO/DPO	See Restrictions	APO/FPO/DPO	See Restrictions	APO/FPO/DPO	See Restrictions	APO/FPO/DPO	See Restrictions
09002	A-B-C-C2-F-F3-H-N-R-S-V-Z1	09069	A-B-C-C2-D-E-F3-H-N-R-S-U-V	09171	A-B-C-C1-C2-E3-F1-F3-J-L-M-N-R-R1-S-T-V-X-Z1	09264	B-C-C2-D-E-F-F3-H-M-R-S-U
09003	B-C-C2-D-E-F-F3-H-M-P-R-S-U	09079	B-C-C2-D-E-F-F3-H-M-R-S-U	09172	B-C-C2-D-E-F-F3-H-M-R-S-U	09265	B-C-D-F-F1-H-J-L-M-N-R-S-T-U-V-Z1
09004	B-C-C2-D-E-F-F3-H-M-R-S-U	09094	B-C-C2-D-F3-H-M-P-R-S-Z1	09173	B-C-C2-D-E-F-F3-H-M-R-S-U	09266	A-B-C2-F3-S-U-R-V-Z1
09005	B-C-C2-D-E-F-F3-H-M-P-R-S	09095	B-C-C2-D-E-F-F3-H-M-R-S-U	09174	B-C-C2-F1-F3-L-N-R-R1-S-T-V-Z1	09276	A-B-F-F3-I3-L-M-N-R-S-T-V-X-Z1
09006	B-C-C2-D-E-F-F3-H-M-R-S-U	09096	B-C-C2-D-E-F-F3-H-M-R-S-U	09175	A-B-C-C1-C2-E2-F1-F3-H1-J-L-M-N-R-R1-S-T-V-W-X-Z1	09277	A-B-E-E1-E2-F1-F3-I3-L-N-R-S-T-V-X-Z1
09008	A-B-C-C2-F-F3-H-N-R-S-V-Z1	09101	A-B-C-C2-F-F3-H-N-Q-R-S-V-Z1	09176	A-B-C-C2-F1-F3-J-L-M-N-R-R1-S-T-V-X-Z1	09278	A-B-F-F3-I3-L-M-N-R-S-T-V-X-Z1
09009	B-C-C2-D-E-F-F3-H-M-R-S-U-Z1	09103	A-B-C-C2-F-F3-H-N-R-S-U-Z1	09177	B-C-C2-D-E-F-F3-H-M-R-S-U	09279	A-B-E-E1-F-F3-I3-L-M-N-R-S-T-V-X-Z1
09010	B-C-C2-D-E-F-F3-H-M-R-S-U2	09104	B-C-C2-D-F3-H-M-R-S-U-Z1	09178	B-C1-C2-E2-F1-F3-I3-L-M-N-R-S-T-V-X-Z1	09280	A-B-C-C1-C2-E-E2-F1-F3-H-I3-L-M-N-R-S-T-V-W-X-Z1
09011	B-C-C2-D-E-F-F3-H-M-R-S	09107	B-C-C2-D-E-F-F3-H-M-R-S-U	09179	A-B-C-C1-C2-F1-F3-J-L-M-N-R-R1-S-T-V-X-Z1	09281	A-B-C-C1-C2-E2-E3-F1-F3-H-H1-J-L-M-N-R-R1-S-T-V-X-Z1
09012	B-C-C2-D-E-F-F3-H-M-R-S-U-Z1	09112	B-C-C2-D-E-F-F3-H-M-R-S-U	09180	B-C-C2-D-E-F-F3-H-M-R-S-U	09282	A-B-C-C1-C2-E2-E3-F1-F3-H-H1-J-L-M-N-R-R1-S-T-V-X-Z1
09013	B-C-C2-D-E-F-F1-F3-H-M-R-S-U-Z1	09114	B-C-C2-D-E-F-F3-H-M-R-S-U	09186	B-C-C2-D-E-F-F3-H-M-P-R-S-U	09283	A-B-C-C2-E-E1-F1-F3-L-M-N-R-S-T-V-X-Z1
09014	B-C-C2-D-E-F-F3-H-M-P-R-S-U	09116	A-B-C-C2-F-F3-H-N-R-S-V-Z1	09203	A-B-C-C1-C2-F1-F3-I3-J-L-M-N-R-R1-S-T-V-X-Z1	09284	A-B-C-C2-F1-F3-I3-L-M-N-R-S-T-V-Z
09015	A-B-C-C1-C2-F-F1-F3-J-L-M-N-R-R1-S-V-Z1	09118	A-B-C-C2-F-F1-F3-M-N-R-R1-S-V-Z1	09204	B-C-F3-M-N-R-S-V-Z1	09285	A-B-C-E-E-1-F1-F3-H-I3-L-M-N-R-S-T-V-X-Z1
09016	B-C-C2-D-E-F1-F3-H-M-R-S-U	09123	B-C-C2-D-E-F-F3-H-M-R-S-U-Z1	09205	A-B-C-C2-E2-F-F3-M-N-R-S-T-V-X	09287	B-C2-E1-F1-F3-J-L-N-R-S-T-V-X-Z1
09017	A-B-C-C2-F-F3-H-N-R-S-V-Z1	09126	B-C-C2-F3-H-M-P-R-S-Z1	09211	B-C-C2-D-E-F-F3-H-M-P-R-S-U	09288	A-B-C-C1-C2-E2-F1-F3-H-H1-J-L-M-N-R-R1-S-T-V-X-Z1
09018	A-B-C-C2-F-F3-H-N-R-S-V-Z1	09128	B-C-C2-D-E-F-F3-H-M-R-S-U	09213	B-C-C2-F1-F3-H-J-L-M-N-R-R1-S-T-U-V-X-Z1	09289	B-E2-F1-F3-H1-J-L-M-N-R-R1-S-T-U2-V-X-Z1
09020	B-C-C2-D-E-F-F3-H-M-R-S-U	09131	B-C-C2-D-E-F-F3-H-M-R-S-U	09214	B-C-C2-D-E-F-F3-H-M-R-S-U-Z1	09290	A-B-F1-F3-J-L-M-N-R-S-T-U2-V-X-Z1
09021	B-C-C2-D-E-F-F3-H-M-R-S-U-Z1	09135	A-B-C2-F-F3-H-N-R-S-U-V-Z1	09216	B,C,F1,F3,M,N,R,S,V,Z1	09291	B-C-C1-C2-E2-F1-F3-H1-L-N-R-R1-S-T-V-X-Z1
09034	B-C-C2-D-E-F-F3-H-M-R-S-U	09136	B-C-C2-D-E-F-F3-H-M-P-R-S-U	09227	B-C-C2-D-E-F-F3-H-M-R-S-U	09292	A-B-C-C2-E-E2-E3-F1-F3-H-H1-J-L-M-N-R-R1-S-T-V-X-Z1
09044	B-C-C2-D-E-F-F3-H-R-S-U	09138	B-C-C2-D-F-F3-H-M-R-S-U	09240	A-B-C1-C2-F-F3-H-N-R-S-V	09293	A-B-C-C1-C2-E-E2-F1-F3-I3-L-M-N-R-S-T-V-X-Z1
09046	B-C-C2-D-E-F-F3-H-M-R-S-U	09140	B-C-C2-D-E-F-F3-H-M-R-S-U	09241	A-B-C-C2-F3-N-R-S-U-Z1	09294	B-C-C1-C2-E2-F1-F3-H1-L-N-R-R1-S-T-V-X-Z1
09049	B-C-C2-D-E-F-F3-H-M-R-S-U	09142	B-C-C2-D-E-F-F3-H-M-R-S-U	09242	A-B-C-C1-C2-F-F3-H-N-R-S-V	09295	B-C-C1-C2-E2-F1-F3-H1-J-L-M-N-R-R1-S-T-V-X-Z1
09053	B-C-C2-D-E-F-F3-H-M-R-S-U	09154	B-C-C2-D-E-F-F3-H-M-R-S-U	09250	B-C-C2-D-E-F-F3-H-M-R-S-U	09301	A-B-C-C1-C2-E2-F1-F3-H1-I3-L-M-N-R-R1-S-T-U4-V-X-Z1
09060	B-C-C2-D-E-F1-F3-H-M-N-R-S-U-Z1	09160	B-C-C2-F1-F3-H-J-L-M-N-R-R1-S-T-U-V-X-Z1	09261	B-C-C2-D-E-F-F3-H-M-N-R-S-U-V-Z1		
09067	B-C-C2-D-E-F-F3-H-M-R-S-U	09170	A-B-C-C2-F1-F3-J-L-M-N-R-R1-S-T-V-X-Z1	09263	B-C-C2-D-E-F-F3-H-M-R-S-U		

APO/ FPO/ DPO	See Restrictions	APO/ FPO/ DPO	See Restrictions	APO/ FPO/ DPO	See Restrictions	APO/ FPO/ DPO	See Restrictions
09304	A-B-C-C1-C2-F-F1-F3-H-M-N-R-S-V-Z-Z1	09489	A-B-C-C1-C2-E2-F1-F3-L-M-N-R-R1-S-T-V-W-X-Z1	09577	B-C-C2-F-F1-F3-R-R1-S-V	09645	B-C-C1-E1-E2-F-F1-F3-M-R-S-U-X-Z1
09305	A-B-C1-E2-F-F1-F3-H1-I3-M-N-R-R1-S-T-V-Z-Z1	09490	A-B-C1-C2-E2-F-F1-F3-H1-J-L-M-N-R-R1-S-T-V-X-Z1	09578	B-C-C2-F-F1-F3-R-R1-S-V	09647	B-C2-F1-F3-M-N-R-S-U-Z1
09306	A-B-C1-E2-F-F1-F3-H1-R-R1-S-U2-V-Z1	09491	A-B-C1-C2-E2-F1-F3-H1-J-L-M-N-R-R1-S-T-V-Z1	09579	B-C-C2-F-F1-F3-R-R1-S-V	09648	B-C2-F3-N-R-S-U-V-Z1
09307	B-C-C2-F-F3-N-R-R1-S-Z1	09494	B-C-C1-C2-F3-M-R-S-U-Z1	09581	B-C-C2-F-F1-F3-R-R1-S-V	09649	B-C2-F3-N-R-S-U-Z1
09309	A-B-C-C1-C2-E2-F-F1-F3-H1-M-N-R-R1-S-V-Z1	09498	B-C-C1-C2-F1-F3-J-L-M-N-R-R1-S-T-V-X-Z1	09582	B-C-C2-F-F1-F3-R-R1-S-V	09701	A-B-C-C1-C2-F1-F3-J-L-M-N-R-R1-S-T-V-X-Z1
09310	A-B-C-C1-E2-F1-F3-H1-I3-L-M-N-R-R1-S-T-U4-V-Z	09501	B-V	09583	B-C-C2-F-F1-F3-R-R1-S-V	09702	B-C-C2-F-F1-M-R-R1-S-U
09311	A-B-C1-C2-E2-F-F1-F3-H1-I3-L-M-N-R-R1-S-T-U4-V-Z-Z1	09502	B-V	09586	B-C-C2-F-F1-F3-R-R1-S-V	09704	B-C-C2-F-F1-F3-R-R1-S-U2-V
09312	A-B-C-C1-E2-F1-F3-H1-I3-L-M-N-R-R1-S-T-U-U4-V-X-Z-Z1	09503	B-F-F1-R-R1-V	09587	B-C-C2-F-F1-F3-R-R1-S-V	09705	B-C-C1-C2-F1-F3-M-R-R1-S-U
09315	A-B-C1-E2-F-F3-N-R-R1-S-V-Z1	09504	B-V	09588	B-C-C2-F-F1-F3-R-R1-S-V	09706	B-C-C2-F3-M-N-R-S-U-V-Z1
09316	A-B-C1-E2-F-F1-F3-H1-I3-M-N-R-R1-S-T-V-Z-Z1	09505	B-V	09590	B-C-C2-F-F1-F3-R-R1-S-V	09707	B-C-C2-F1-F3-J-L-M-N-R-R1-S-T-V-X-Z1
09321	A-B-C1-C2-E2-F-F3-H1-M-N-R-R1-S-V-Z1	09506	B-V	09591	B-C-C2-F-F1-F3-R-R1-S-V	09708	B-C-C1-C2-F-F3-M-R-R1-S-U
09330	A-B-C1-C2-D-E-E2-F-F1-F3-H1-M-R-R1-S-V-Z1	09507	B-V	09592	B-C-C2-F-F1-F3-R-R1-S-V	09709	B-C-C1-C2-E2-F1-F3-H1-J-L-M-N-R-R1-S-T-V-X-Z1
09333	A-B-C-C1-C2-E2-F-F1-F3-H1-I3-M-N-R-R1-S-V-V1-Z-Z1	09508	B-C-C2-F-F3-R-R1-S-V	09594	B-C-C1-C2-F-F1-F3-R-R1-S-V	09710	B-C-C1-F-F1-J-L-M-N-R-R1-T-U-V-Z1
09343	A-B-C1-C2-F-F3-M-N-R-R1-S-V-Z1	09509	B-C-C2-F-F3-R-R1-S-V	09595	B-C-C2-F-F1-F3-I3-J-R-R1-S-V-V1-Z1	09711	A-B-C-C2-E2-F-F1-F3-M-N-R-S-T-V-X
09348	A-B-C1-E2-F-F1-F3-H1-I3-M-N-R-R1-S-T-V-Z-Z1	09510	B-C-C2-F-F3-R-R1-S-V	09596	B-F-F1-R-R1-V	09712	A-B-C2-F-F3-H-R-S-U-V-Z1
09357	A-B-C1-E2-F-F3-H1-M-R-V-Z1	09511	B-C-C2-F-F3-R-R1-S-V	09599	B-F-F1-R-R1-V	09714	B-C-C1-C2-F-F3-M-R-R1-S-U
09365	A-B-C-C1-E2-F-F3-H1-M-N-R-V-Z1	09512	B-C-C2-F-F1-F3-R-R1-S-V	09600	B-C-C2-F-F1-F3-R-S-U-Z1	09715	B-F-F1-J-L-M-N-R-T-V-Z1
09366	A-B-C-C1-E2-F-F1-F3-H1-M-R-R1-S-V-Z1	09513	B-C-C2-F-F1-F3-R-R1-S-V	09602	B-C-C2-F-F1-F3-N-R-S-U-V	09716	B-C-C2-F1-F3-J-L-M-N-R-R1-S-T-V-X-Z1
09401	B-C-C1-C2-F3-M-R-S-U-Z1	09514	B-C-C2-F-F1-F3-R-R1-V	09603	B-C-C2-F-F1-F3-R-S-U-V-Z1	09717	A-B-C-C2-F3-M-R-S-V-W-Z1
09403	B-C-C1-C2-F3-M-R-S-U-Z1	09516	B-C-C2-F-F1-F3-R-R1-S-V	09604	B-C-C2-F-F1-F3-P-R-S-U-V-Z1	09718	B-F-F1-J-L-M-N-R-T-U-V-Z1
09410	B-C-C2-F-F1-F3-N-R-S-U2	09517	B-C-C2-F-F1-F3-R-R1-S-V	09605	B-C-C2-D-F-F3-H-M-R-S-U-V	09719	B-C-C2-D-F3-M-R-S-U-V-Z1
09421	B-C-C1-C2-F3-M-R-S-U-Z1	09520	B-F-F1-F3-R-R1-S-V	09606	B-C-C2-D-F-F3-H-M-R-S-U-V	09720	B-C2-F3-M-R-S-U-V-Z1
09424	B-C-C2-F1-F3-M-N-R-S-U-Z1	09523	B-C-C2-F-F1-F3-R-R1-S-V	09608	B-C-F-F3-N-R-S-U-V-Z1	09722	A-B-C-C2-F-F3-H-N-R-S-V-Z-Z1
09447	B-C-C1-C2-F3-M-R-S-U-V-Z1	09524	B-C-C2-F-F1-F3-R-R1-S-V	09609	B-C-C2-F-F3-N-R-S-U-V-Z1	09723	B-C-C2-F1-F3-J-L-M-N-R-R1-S-T-V-X-Z1
09454	B-C-C1-C2-F3-M-R-S-U-V-Z1	09532	B-C-C2-F-F1-F3-R-R1-S-V	09610	B-C-C2-F-F1-F3-M-R-S-U-V-Z1	09724	B-C-C1-C2-F-F3-M-R-R1-S-U
09456	B-C-C1-C2-F3-M-N-R-S-U-V-Z1	09533	B-V	09613	B-C-C2-F-F3-N-R-S-U-V	09725	A-B-C2-F-F3-H-N-Q-R-S-V-V1-Z-Z1
09459	B-C-C1-C2-F3-M-R-S-U-Z1	09534	B-F-F1-F3-R-R1-S-V	09614	A-B-C-C1-C2-E2-F1-F3-H1-J-L-M-N-R-R1-S-T-U-V-X-Z1	09726	B-F-F1-J-L-M-N-R-T-U-V-Z1
09461	B-C-C1-C2-F3-M-P-R-S-U-Z1	09541	A-B-C-F-F3-M-N-S-V-Z1	09618	B-C-C2-F-F3-R-S-U-Z1	09727	A-B-C-C1-C2-F1-F3-J-L-M-N-R-R1-S-T-V-X-Z1
09463	B-C-C1-C2-F3-M-R-S-U-Z1	09542	A-B-C-F-F3-M-N-S-V-Z1	09620	B-C-C2-F-F3-R-S-U-V-Z1	09728	A-B-C-C1-C2-F1-F3-J-L-M-N-R-R1-S-T-V-X-Z1
09464	B-C-C1-C2-F3-R-S-U-Z1	09544	A-B-C-F-F3-M-N-S-V-Z1	09621	B-C-F-F3-R-U-Z1	09729	B-C-C2-F-F3-N-R-R1-S-U-V-Z1
09467	B-C-C2-E-E1-F1-F3-J-L-M-N-R-S-T-V-W-X-Z1	09545	A-B-C-F-F3-M-N-S-V-Z1	09622	B-C-C2-F-F3-R-S-U-Z1	09730	A-B-C-C1-C2-F1-F3-J-L-M-N-R-R1-S-T-V-X-Z1
09468	B-C-C1-C2-F3-M-R-S-U-Z1	09550	B-C-C2-F-F1-F3-R-R1-S-V	09623	B-C-C2-F-F3-R-S-U-V-Z1	09731	A-B-C-C1-C2-F1-F3-J-L-M-N-R-R1-S-T-V-X-Z1
09469	B-C-C1-C2-F3-R-S-U-Z1	09554	B-C-C2-F-F1-F3-R-R1-S-V	09627	B-C-C2-F-F3-R-S-U-V-Z1	09732	B-F-F3-N-S-V-Z-Z1
09470	B-C-C1-C2-F3-M-R-S-U-Z1	09556	B-F-F1-R-R1-V	09630	B-C-C2-F-F3-R-S-U-V	09733	B-F-F3-N-R-S-V-Z
09487	A-B-C-C1-C2-E2-F1-F3-I3-L-M-N-R-R1-S-T-V-W-X-Z-Z1	09564	B-C-C2-F-F1-F3-R-R1-S-V	09633	B-C-C2-D-F-F3-M-R-S-U-U1-U2-U3-V-Z1	09734	A-B-C-C1-C2-F1-F3-I3-J-L-M-N-R-R1-S-T-V-X-Z1
09488	A-B-C-C1-C2-E2-F1-F3-J-L-M-N-R-S-T-V-W-X-Z1	09565	B-C-C2-F-F1-F3-R-R1-S-V	09634	A-B-C2-F-F3-M-N-R-S-V	09735	B-F3-N-R-S-V-Z-Z1
		09566	B-C-C2-E2-E3-F-F1-F3-R-R1-S-V	09636	B-C-C2-F-F3-R-S-U-V-Z1	09736	A-B-C-C1-C2-F1-F3-J-L-M-N-R-R1-S-T-V-X-Z1
		09567	B-C-C2-E2-E3-F-F1-F3-R-R1-S-V	09642	B-C-C2-F1-F3-J-L-M-N-R-S-T-U-V-X	09737	A-B-C-C1-C2-F1-F3-I3-J-L-M-N-R-R1-S-T-V-W-X-Y-Z-Z1
		09568	B-C-C2-F-F1-F3-R-R1-S-V	09643	B-C-C2-F3-M-R-S-U-V-Z1	09738	A-B-C-C1-C2-F1-F3-J-L-M-N-R-R1-S-T-V-X-Z1
		09569	B-C-C2-E2-E3-F-F1-F3-R-R1-S-V-Z1				
		09570	B-C-C2-F-F1-F3-R-R1-S-V				
		09573	B-C-C2-E2-E3-F-F1-F3-R-R1-S-V-Z1				
		09574	B-F-F1-R-R1-V				
		09575	B-C-C2-F-F1-F3-R-R1-S-V				
		09576	B-C-C2-F-F1-F3-R-R1-S-V				

APO/ FPO/ DPO	See Restrictions	APO/ FPO/ DPO	See Restrictions	APO/ FPO/ DPO	See Restrictions	APO/ FPO/ DPO	See Restrictions
09739	A-B-C-C1-C2-F1-F3-J-L-M-N-R-R1-S-T-V-X-Z1	09815	A-B-C-C2-E-E2-E3-F1-F3-H-H1-J-M-N-R-R1-S-U-V-Z1	09860	A-B-C-C2-F1-F3-J-L-M-N-R-R1-S-T-V-X-Z1	34009	B-C2-F-F1-F3-R-S-V
09741	A-B-C-C1-C2-E2-F1-F3-H1-J-L-M-N-R-R1-S-T-V-W-X-Y-Z1	09816	A-B-C-C1-C2-E2-E3-F1-F3-J-L-M-N-R-R1-S-T-V-X-Z1	09862	A-B-C-C2-F1-F3-I3-L-M-N-R-R1-S-T-V-X-Z1	34010	B-C2-F-F1-F3-R-S-V
09742	A-B-C-C1-C2-F1-F3-J-L-M-N-R-R1-S-T-V-X-Z1	09817	A-B-C-C1-C2-E2-E3-F1-F3-H-H1-J-L-M-N-R-R1-S-T-V-X-Z1	09864	A-B-C-C1-C2-E2-F1-F3-L-M-N-R-R1-S-T-V-W-X-Z1	34011	B-C-C1-C2-E2-F1-F3-J-L-M-N-R-R1-S-T-V-X-Z1
09743	A-B-C-C2-F-F3-H-N-R-S-V-Z1	09818	A-B-C-C2-F-F3-M-R-S-V-Z1	09867	A-B-C-C1-C2-E2-F1-F3-L-M-N-R-R1-S-T-V-W-X-Z1	34020	B-C-C1-C2-F1-F3-J-L-M-N-R-R1-S-T-V-X-Z1
09744	A-B-C-C1-C2-F1-F3-J-L-M-N-R-R1-S-T-V-X-Z1	09819	A-B-C-C1-C2-E2-F-F1-F3-H-H1-M-R-R1-S-V-Z1	09869	A-B-C-C1-C2-E2-F1-F3-L-M-N-R-R1-S-T-V-W-X-Z1	34021	B-C-C1-C2-F1-F3-J-L-M-N-R-R1-S-T-V-X-Z1
09745	A-B-C2-F-F1-F3-M-N-R-R1-S-V-Z1	09820	A-B-C-C2-F1-F3-H-H1-J-L-M-N-R-R1-S-T-V-X-Z1	09870	A-B-C-C1-C2-E2-F1-F3-H1-I3-L-M-N-R-R1-S-T-U4-V-X-Z1	34022	B-C-C1-C2-F1-F3-J-L-M-N-R-R1-S-T-V-X-Z1
09748	A-B-C-C1-C2-F1-F3-J-L-M-N-R-R1-S-T-V-X-Z1	09821	A-B-C-C2-F-F3-N-R-S-V-Z1	09873	A-B-C-C1-C2-E2-F1-F3-H1-I3-L-M-N-R-R1-S-T-U4-V-X-Z1	34023	B-C-C1-C2-F1-F3-J-L-M-N-R-R1-S-T-V-X-Z1
09749	A-B-C2-F-F3-H-N-R-S-U-V-Z1	09822	A-B-C-C2-F-F3-M-R-S-V-Z1	09874	A-B-C-C1-C2-E2-F1-F3-H1-I3-L-M-N-R-R1-S-T-U4-V-X-Z1	34024	B-C-C1-C2-F1-F3-J-L-M-N-R-R1-S-T-V-X-Z1
09750	A-B-C-C1-C2-F1-F3-J-L-M-N-R-R1-S-T-V-X-Z1	09823	A-B-C-C1-C2-F1-F3-J-L-M-N-R-R1-S-T-V-X-Z1	09875	A-B-C1-C2-E2-F-F1-F3-H1-I3-L-M-N-R-R1-S-T-U4-V-X-Z1	34025	B-F-F1-F3-J-L-M-N-R-R1-T-V-Z1
09751	B-C-C2-D-E-F-F3-H-M-R-S-U	09824	A-B-C-C2-F-F3-M-R-S-V-Z1	09877	A-B-C-C2-E-E2-E3-F1-F3-H-H1-J-M-N-R-R1-S-U-V-Z1	34030	B-C-C1-C2-F1-F3-J-L-M-N-R-R1-S-T-V-X-Z1
09752	B-C-C2-D-F-F3-H-R-S-U	09825	A-B-C-C1-C2-F1-F3-J-L-M-N-R-R1-S-T-V-X-Z1	09880	A-B-C1-C2-E2-F-F1-F3-H1-J-L-M-N-R-R1-S-T-U-V-Z1	34031	B-C-C1-C2-F1-F3-J-L-M-N-R-R1-S-T-V-X-Z1
09753	A-B-C-C1-C2-D-E-F1-F3-H-M-N-R-S-V-W-Z1	09826	A-B-C-C1-C2-E1-E2-E3-F1-F3-J-L-M-N-R-R1-S-T-V-W-X-Z1	09882	A-B-C-C1-C2-E2-F-F1-F3-H1-J-L-M-N-R-R1-S-T-U-V-Z1	34032	B-C-C1-C2-F1-F3-J-L-M-N-R-R1-S-T-V-X-Z1
09754	A-B-C-C2-F-F3-H-N-R-S-V-Z1	09827	A-B-F-F1-J-L-M-N-R-T-V-Z1	09892	A-B-C-C1-C2-E2-F1-F3-J-L-M-N-R-R1-S-T-V-X-Z1	34033	B-C-C1-C2-F1-F3-I3-L-M-N-R-S-T-V-X-Z1
09755	A-B-C-C1-C2-D-F-F1-F3-J-L-M-N-Q-R-R1-S-T-V-Z1	09828	A-B-C-C1-C2-F1-F3-I3-L-M-N-R-R1-S-T-V-X-Z1	09895	A-B-C1-C2-E2-F-F1-F3-J-L-M-N-R-T-V-W-Z1	34034	B-C-C1-C2-F1-F3-I3-L-M-N-R-R1-S-T-V-X-Z1
09756	A-B-E3-F-F1-F3-J-L-N-Q-R-R1-S-T-V-Z1	09829	B-C-N-R-V-Z1	09898	B-C-C1-C2-E2-F-F1-F2-H1-N-R-R1-S-U2-V-Z1	34035	B-C-C1-C2-F1-F3-H-J-L-M-N-R-R1-S-T-V-X-Z1
09759	A-B-C-C1-C2-E2-F1-F3-J-L-M-N-R-R1-S-T-V-X-Z1	09830	B-C-F-F1-F3-J-L-M-N-R-R1-S-T-V-Z1	09902	A-B-C1-C2-E2-F-F3-H1-M-R-R1-S-V-Z1	34036	B-C-C1-C2-F1-F3-J-L-M-N-R-R1-S-T-V-X-Z1
09761	B-C2-F-F1-F3-M-R-R1-S-V-Z1	09831	B-C-C1-C2-F1-F3-J-L-M-N-R-R1-S-T-V-X-Z1	09903	B-C1-E2-F1-F3-S-V-Z1	34037	B-C-C1-C2-F1-F3-H-J-L-M-N-R-R1-S-T-V-X-Z1
09762	A-B-C-C1-E3-F1-F3-J-L-M-N-R-R1-S-T-V-Y-Z1	09832	A-B-C-C1-C2-E2-E3-F1-F3-H-H1-J-M-N-R-R1-S-V-Z1	09904	B-C1-E2-F1-F3-S-V-Z1	34039	B-C-C1-C2-F1-F3-J-L-M-N-R-R1-S-T-V-X-Z1
09769	A-B-C-C1-E3-F1-F3-J-L-M-N-R-R1-S-T-V-Y-Z1	09834	B-C-C2-E2-E3-F-F1-F3-R-R1-S-U-Z1	09908	A-B-C2-F-F1-F3-N-R-R1-S-V-Z1	34041	B-C-C1-C2-F1-F3-J-L-M-N-R-R1-S-T-V-X-Z1
09777	A-B-C-C1-C2-E1-F1-F3-J-L-M-N-R-R1-S-T-V-X-Z1	09836	A-B-C-C1-C2-F1-F3-J-L-M-N-R-R1-S-T-V-X-Z1	09909	A-B-C2-F-F1-F3-N-R-R1-S-V-V1-Z1	34042	A-B-C-F-F1-F3-M-N-R-S-U-V-W-Z1
09780	A-B-C2-F-F3-H-N-R-S-V	09837	B-E2-E3-F1-F3-R-S-V-Z1	09974	B-F1-F3-J-L-M-N-R-S-T-U2-V-X-Z1	34055	B-C-C1-C2-F1-F3-J-L-M-N-R-R1-S-T-V-X-Z1
09801	A-B-C1-E2-F-F3-H1-M-N-R-R1-S-V-Z1	09838	B-C-C2-E2-E3-F-F1-F3-R-S-U-Z1	09975	B-F1-F3-I3-L-M-N-R-S-T-U2-V-X-Z1	34058	B-C2-F-F1-F2-F3-R-R1-S-V-Z1
09802	A-B-C-C2-D-F1-F3-H-H1-I3-L-M-N-R-R1-S-T-V-W-X-Z1	09842	A-B-C-C1-C2-E3-F1-F3-J-L-M-N-R-R1-S-T-V-X-Z1	09977	B-F1-F3-J-L-M-N-R-S-T-U2-V-X-Z1	34060	B-C-C1-C2-E2-F1-F3-J-L-M-N-R-R1-S-T-V-X-Z1
09803	A-B-C-C2-E-E2-E3-F1-F3-H-H1-J-M-N-R-R1-S-U-V-Z1	09844	A-B-C-C1-C2-F1-F3-J-L-M-N-R-R1-S-T-V-X-Z1	09978	B-C-C2-D-E1-F-F1-F3-H-H1-M-N-R-R1-S-T-X-Z1	34066	B-C-C1-C2-F1-F3-I3-J-L-M-N-R-R1-S-T-V-X-Z1
09804	A-B-C-C2-F-F1-F3-M-N-R-S-V-Z1	09845	A-B-C-C1-C2-E3-F1-F3-J-L-M-N-R-R1-S-T-V-X-Z1	09980	B-C-C1-C2-F1-F3-J-L-M-N-R-R1-S-T-V-X-Z1	34067	B-C-C1-C2-F1-F3-J-L-M-N-R-R1-S-T-V-X-Z1
09805	B-C-C2-E2-E3-F-F1-F3-R-R1-S-Z1	09846	A-B-C-C1-C2-F1-F3-J-L-M-N-R-R1-S-T-V-X-Z1	09981	B-C-C1-C2-F1-F3-J-L-M-N-R-R1-S-T-V-X-Z1	34068	B-C-C1-C2-F1-F3-J-L-M-N-R-R1-S-T-V-X-Z1
09807	A-B-C1-C2-E2-F-F1-F3-H1-I3-M-N-R-R1-S-T-V-Z1	09847	B-C-C2-F1-F3-J-L-M-N-R-R1-S-T-V-X-Z1	09982	B-C-C1-C2-F1-F3-J-L-M-N-R-R1-S-T-V-X-Z1	34069	B-C-C1-C2-F1-F3-I3-J-L-M-N-R-R1-S-T-V-X-Z1
09808	A-B-C-C1-C2-E2-F1-F3-H-H1-J-L-M-N-R-R1-S-T-V-X-Z1	09848	A-B-C2-F-F3-M-R-S-V-Z1	09983	B-C-C1-C2-F1-F3-J-L-M-N-R-R1-S-T-V-X-Z1	34071	A-B-F1-F3-I3-L-M-N-R-S-T-V-W-X-Z1
09809	B-C-C1-C2-E3-F1-F3-J-L-M-N-R-S-T-V-X-Z1	09853	B-C1-C2-E2-F-F1-F3-H1-N-R-R1-S-U2-V-Z1	09984	B-C-C1-C2-F1-F3-J-L-M-N-R-R1-S-T-V-X-Z1	34072	B-C-C2-F1-F3-J-L-M-N-R-S-T-V-X-Z1
09810	A-B-C2-F-F1-F3-N-R-S-V-Z1	09854	A-B-C-C1-C2-F1-F3-J-L-M-N-R-R1-S-T-V-X-Z1	09988	A-B-C-C1-C2-E2-F-F1-F3-H1-M-R-R1-S-U2-V-Z1	34078	B-F1-F3-N-R-S-V-Z1
09811	A-B-C-C2-E-E2-E3-F1-F3-H-H1-J-M-N-R-R1-S-U-V-Z1	09855	A-B-C-C1-C2-E2-F-F1-F3-H1-M-R-R1-S-U2-V-Z1	34001	A-B-C-C1-C2-F1-F3-J-L-M-N-R-R1-S-T-V-X-Z1	34080	B-F-F1-R-R1-V
09812	B-E2-E3-F-F1-I-J-L-N-R-T-U-V-Z1	09857	A-B-C-C2-E2-F1-F3-I3-L-M-N-R-R1-S-T-V-X-Z1	34002	B-C-C1-C2-F1-F3-J-L-M-N-R-R1-S-T-V-X-Z1	34081	B-F-F1-R-R1-V
09813	A-B-C-C1-C2-E2-E3-F1-F3-J-L-N-R-R1-S-T-V-X-Z1	09858	A-B-C-C1-C2-E2-E3-F1-F3-H-H1-J-M-N-R-R1-S-U-V-Z1	34004	B-C-C1-C2-F1-F3-J-L-M-N-R-R1-S-T-V-X-Z1	34082	B-F-F1-R-R1-V
09814	B-C-C2-E2-E3-F1-F3-I3-J-L-M-N-R-R1-S-T-V-X-Z1	09859	B-C-C1-C2-E2-E3-F-F1-F3-H1-R-R1-S-U-Z1	34007	B-F-F1-H-J-M-N-R-R1-V-Z1	34083	B-F-F1-R-R1-V
				34008	B-C-C1-C2-D-E1-F1-F3-H-H1-J-L-M-N-R-R1-S-T-V-X-Z1	34084	B-F-F1-R-R1-V
						34085	B-C-C1-C2-E2-E3-F-F1-F3-H1-J-R-R1-S-T-V-V1
						34086	B-C-C1-C2-E2-E3-F-F1-F3-H1-J-R-R1-S-T-V-V1
						34087	B-C-C2-E2-F-F1-F3-R-R1-S-V
						34088	B-C-C2-F-F1-F3-R-R1-S-V
						34089	B-C-C2-F-F1-F3-R-R1-S-V
						34090	B-C-C2-F-F1-F3-R-R1-S-V

APO/ FPO/ DPO	See Restrictions	APO/ FPO/ DPO	See Restrictions	APO/ FPO/ DPO	See Restrictions	APO/ FPO/ DPO	See Restrictions
34091	B-C-C2-E2-E3-F-F1-F3-R-R1-S-V-Z1	96321	B-F-F1-F2-F3-H-M-R-S-W-Z1	96521	B-C-C1-C2-F-F1-F3-J-L-M-N-R-R1-S-T-V-X-Z1	96629	B-C-C2-F-F1-F3-R-R1-S-V
34092	B-C-C2-F-F1-F3-R-R1-S-V-Z1	96322	B-F-F1-F2-F3-H-M-R-S-W-Z1	96530	A-B-C-C1-C2-F1-F3-H1-J-L-M-N-R-R1-S-T-V-X-Z1	96632	B-C-C2-F-F1-F3-R-R1-S-V
34093	B-C-C2-F-F1-F3-R-R1-S-V	96326	B-C-C2-F-F3-M-R-S-W	96531	A-B-C-C2-F-F1-F3-H-M-N-R-S-U-V	96633	B-V
34094	B-F-F1-F3-R-R1-S-V	96328	B-C-C2-F3-M-R-S-W	96532	A-B-C-C1-C2-F1-F3-H-J-L-M-N-R-R1-S-T-V-X-Z1	96641	B-V
34095	B-F-F1-R-R1-V	96331	A-B-C-C2-F-F1-F3-J-L-M-N-R-S-U2-W	96533	A-B-C-C1-C2-F1-F3-H-J-L-M-N-R-R1-S-T-V-X-Z1	96642	B-V
96201	A-B-F-F1-F3-M-R-S-U	96336	B-C-C2-F3-M-R-S-V-W	96534	A-B-C-C2-F-F1-F2-F3-R-R1-S-U-V-Z1	96643	B-F-F1-F3-R-R1-S-V
96202	A-B-C-C2-F-F1-F3-M-R-S	96337	B-C2-F-F1-F3-M-R-R1-S-W	96535	A-B-C-C1-C2-F1-F3-J-L-M-N-R-R1-S-T-V-X-Z1	96644	B-V
96203	A-B-F-F1-F3-M-R-S-U	96338	A-B-C-C2-F-F3-M-R-S-U2-W	96537	B-V-Z1	96645	B-V
96204	A-B-C-C2-F-F1-F3-M-R-S-U-U2	96339	A-B-C-C2-F-F3-M-N-R-S-U2-W	96540	B-F1-F2-F3-S-V-Z1	96649	B-C-C2-F-F1-F3-R-R1-S-V
96205	B-C-C2-F-F1-F3-M-P-R-S-U	96343	A-B-F-F3-M-P-R-S-U2	96542	B-C-C2-F-F1-F2-F3-R-S	96650	B-F-F1-R-R1-V
96206	A-B-C-C2-F-F1-F3-M-R-S-U	96346	B-F-F1-F2-F3-H-M-R-S-W-Z1	96543	B-C-C2-F-F1-F2-F3-P-R-S	96657	B-C-C2-F-F1-F3-R-R1-S-V
96207	A-B-F-F1-F3-M-R-S-U-V	96347	B-C2-F-F1-F2-F3-H-M-R-S-W-Z1	96548	A-B-C-C2-F-F1-F3-H-M-R-S-U	96660	B-C-C2-F-F1-F3-R-R1-S-V
96208	A-B-C-C2-F-F1-F3-M-R-S-U	96349	B-C-C2-F-F1-F2-F3-H-M-R-S-Z1	96549	A-B-C-C1-C2-F1-F3-H-J-L-M-N-R-R1-S-T-V-X-Z1	96661	B-C-C2-F-F1-F3-R-R1-S-V
96209	A-B-C-C1-C2-F1-F3-J-L-M-N-R-S-T-U-V-X-Z1	96350	B-F-F1-F2-F3-H-M-R-S-W-Z1	96550	A-B-H-M-N-U-V-Z1	96662	B-C-C2-F-F1-F3-R-R1-S-V
96210	A-B-C-C1-C2-F1-F3-I3-L-M-N-R-R1-S-T-V-X-Z1	96351	B-C-C2-F-F1-F2-F3-H-M-R-S-Z1	96551	A-B-C-C1-C2-F1-F3-H-J-L-M-N-R-R1-S-T-V-X-Z1	96663	B-C-C2-F-F1-F3-R-R1-S-V
96212	B-F-F1-F2-H-M-W-Z1	96362	B-C2-F-F1-F2-F3-H-M-R-S-W-Z1	96552	B-Z1	96664	B-C-C2-F-F1-F3-R-R1-S-V
96213	A-B-C-C2-F1-F3-N-R-S	96365	B-C-C2-F3-M-R-S-W-V	96553	A-B-C-C2-F-F1-F3-H-M-N-R-S-U	96665	B-C-C2-F-F1-F3-R-R1-S-V
96214	A-B-C-C2-F1-F3-N-R-S-U	96367	B-C-C2-F3-L-M-R-S-W	96554	A-B-C-C1-C2-F1-F3-H-J-L-M-N-R-R1-S-T-V-X-Z1	96666	B-C-C2-F-F1-F3-R-R1-S-V
96218	A-B-C-C2-F-F1-F3-M-R-S-U	96368	B-C-C2-F3-M-R-S-W	96555	A-B-C-C2-F-F1-F3-M-R-S-U2-V	96667	B-C-C2-F-F1-F3-R-R1-S-V
96224	A-B-C-C2-F-F1-F3-M-R-S-U	96370	B-F-F1-F2-H-M-W-Z1	96557	A-B-C-C2-F-F1-F3-M-R-S-U2-V	96668	B-C-C2-F-F1-F3-R-R1-S-V
96251	A-B-C-C2-F-F1-F3-M-R-S-U	96371	B-C-C2-F-F3-M-R-S-W	96562	A-B-C-C1-C2-D-E2-E3-F1-F3-H-H1-I3-L-M-N-R-R1-S-T-V-X-Z1	96669	B-C-C2-F-F1-F3-R-R1-S-V
96257	A-B-F-F1-F3-S-U	96372	B-C-C2-F-F3-M-R-S-W	96577	A-B-C2-F-F3-H-M-N-R-S-U	96670	B-C-C2-F-F1-F3-R-R1-S-V
96258	B-C-C2-F-F1-F3-M-P-R-S	96373	B-C-C2-F-F3-M-R-S-W	96578	B-C-C2-F1-F3-H-J-N-R-S	96671	B-C-C2-F-F1-F3-R-R1-S-V
96260	A-B-C-C2-F-F1-F3-M-R-S-U	96374	B-C-C2-F-F3-M-R-S-W	96595	B-F-F3-R-S-V-Z1	96672	B-C-C2-F-F1-F3-R-R1-S-V
96262	A-B-C2-F-F1-F3-R-S-U-V-Z1	96375	B-C-C2-F-F3-M-R-S-W	96598	B-C2-F3-I3-N-R-S-V1	96673	B-C-C2-F-F1-F3-R-R1-S-V
96264	A-B-C-C2-F1-F3-R-S-U	96376	B-C-C2-F-F3-M-R-S-W	96599	B-C2-F3-N-R-S-V	96674	B-C-C2-F-F1-F3-R-R1-S-V
96266	A-B-C-C2-F1-F3-R-S-U	96377	B-C-C2-F-F3-M-R-S-W	96601	B-V	96675	B-C-C2-F-F1-F3-R-R1-S-V
96269	A-B-C-C2-F1-F2-F3-R-S-U-Z1	96378	B-C-C2-F-F3-M-R-S-W	96602	B-V	96677	B-C-C2-F-F1-F3-R-R1-S-V
96271	B-C-C2-F-F1-F3-M-P-R-S	96379	B-C-C2-F-F3-M-R-S-W	96603	B-V	96678	B-C-C2-F-F1-F3-R-R1-S-V
96273	B-C-C2-F-F1-F3-M-R-S-U	96380	B-C-C2-F-F3-M-R-S-W	96604	B-V	96679	B-C-C2-F-F1-F3-R-R1-S-V
96275	A-B-F-F1-F3-M-R-S-U	96382	B-C-C2-F-F3-M-R-S-W	96605	B-V	96681	B-V
96276	A-B-C-C2-F1-F3-R-S	96384	B-C-C2-F-F3-M-R-S-W	96606	B-C-C2-F-F3-M-R-S-V-W	96682	B-C-C2-F-F1-F3-R-R1-S-V
96278	A-B-C-C2-F1-F3-R-S-U	96384	B-C-C2-F-F3-M-R-S-W	96607	B-V	96683	B-C-C2-F-F1-F3-R-R1-S-V
96283	A-B-F-F1-F3-S-U	96385	B-C-C2-F-F3-M-R-S-W	96608	B-E2-F-H1-R1-U2-V-Z1	96686	B-C-C2-F-F1-F3-R-R1-S-V
96284	A-B-C-C2-F-F1-F3-M-R-S-U	96386	B-C-C2-F-F3-M-R-S-W	96609	B-E2-F-H1-R1-U2-V-Z1	96691	B-C-C2-F-F1-F3-R-R1-S-V
96297	A-B-C-C2-F-F1-F3-M-R-S-U	96387	B-C-C2-F-F3-M-R-S-W	96610	B-C-C2-F-F3-H1-R-R1-S-U2-V-Z1	96692	B-C-C2-F-F1-F3-R-R1-S-V
96300	A-B-F3-M-R-S-V-Z1	96388	B-C-C2-F-F3-M-R-S-W	96611	B-C-C2-F-F3-H1-R-R1-S-U2-V-Z1	96693	B-C-C2-F-F1-F3-R-R1-S-V
96301	A-B-C-C2-F-F3-M-N-R-S-U2-W	96389	B-C-C2-F-F3-M-R-S-W	96612	B-C-C2-F-F3-H1-R-R1-S-U2-V-Z1	96694	B-C-C2-F-F1-F3-I3-J-R-R1-S-V-Z
96303	B-C-C1-C2-F1-F3-H-J-L-M-N-R-S-T-V-W-X-Z1	96401	B-C-F-F3-N-R-S-V-V1-Z1	96613	B-C-C2-F-F3-H1-R-R1-S-U2-V-Z1	96695	B-C-C2-F-F1-F3-R-R1-S-V
96306	B-F-F1-F2-F3-H-M-R-S-W-Z1	96502	A-B-C-C1-C2-F-F1-F3-J-M-N-R-R1-S-T-U-V	96615	B-F-F1-R-R1-V	96696	B-F-F1-R-R1-V
96309	B-C-C2-F-F1-F3-M-N-R-S-V-W	96504	A-B-C-C1-C2-F1-F3-I3-L-M-N-R-R1-S-T-V-W-X-Z1	96616	B-C2-F-F1-F3-R-R1-S-V	96698	B-C-C2-F-F1-F3-R-R1-S-V
96310	B-C-C2-F-F3-M-R-S-W	96505	A-B-C-C1-C2-F1-F3-I3-L-M-N-R-R1-S-T-V-W-X-Z1	96619	B-C-C2-F1-F3-R-S-V		
96311	B-C-C2-F-F3-M-R-S-W	96506	B-C-C2-D-E1-E2-F-F1-F3-H-H1-M-N-R-S-T-Z1	96620	B-C-C2-F-F1-F3-R-R1-S-V		
96315	B-C-C2-F-F3-M-R-S-W	96507	A-B-C-C1-C2-F1-F3-H-J-L-M-N-R-S-T-V-X-Z1	96628	B-C-C2-F-F1-F3-R-R1-S-V		
96319	B-C-C2-F3-M-R-S-W	96510	B-I3-N-V				
		96511	B-I3-N-V				
		96515	B-C-D-E1-F-F1-F3-H-H1-M-N-R-S-T-Z1				
		96516	B-C-C2-D-E1-E2-F-F1-F3-H-H1-M-N-R-S-T-Z1				
		96517	B-C-D-E1-E2-F-F1-F3-H-H1-M-N-R-T-U-V-Z1				
		96520	B-F-N-U3-V				

RESTRICTIONS

LEGEND

PS Form 2976, *Customs — CN 22 (Old C 1) and Sender's Declaration*
 PS Form 2976-A, *Customs Declaration and Dispatch Note*
 PS Form 2976-B, *Priority Mail Express International Shipping Label and Customs Form*

ATF = Bureau of Alcohol, Tobacco, Firearms, and Explosives
 Box C = Department of State (DOS) contractor personnel
 Box R = Retired military personnel
 DPO = Diplomatic Post Office
 MPO = Military Post Office
 PACT = Prevent All Cigarette Trafficking Act
 PAL = Parcel Airlift
 PMEMS = Priority Mail Express Military Service
 PUB 52 = Publication 52, *Hazardous, Restricted, and Perishable Mail*
 SAM = Space Available Mail
 USDA = United States Department of Agriculture

Note: Mail order catalogs are prohibited as SAM or PAL mail.

A. Securities, currency, or precious metals, including in their raw, unmanufactured state, are prohibited. Official Mail shipments are exempt from this restriction.

A1. Reserved for future use.

A2. Reserved for future use.

B. Other than for PMEMS and the exceptions listed below, a customs declaration PS Form 2976 or PS Form 2976-A is required for all items weighing 16 ounces or more, and for all items (regardless of weight) containing potentially dutiable mail contents (e.g., merchandise or goods) addressed to or from this ZIP Code. Other than the exceptions listed below, all PMEMS mailpieces (regardless of mail contents or weight) addressed to or from this ZIP Code must bear a properly completed PS Form 2976-B. The surface area of the address side of the mailpiece must be large enough to contain the applicable customs declaration. The following exceptions apply to known mailers, who for this purpose are defined as follows:

- Business mailers who enter volume mailings through business mail entry units or other bulk mail acceptance locations, pay postage through advance deposit accounts, use permit imprints for postage payment, and submit completed postage statements at the time of entry that certify that the mailpieces contain no dangerous materials that are prohibited by postal regulations. Such business mailers are exempt from providing customs documentation on non-dutiable letters and printed matter.
- All federal, state, and local government agencies whose mailings are regarded as "Official Mail." Such agencies are exempt from providing customs documentation, except for any items addressed to an MPO or DPO to which restriction "B2" applies.

B2. All federal, state, and local government agencies must complete customs documentation when sending potentially dutiable mail addressed to or from this MPO or DPO.

C. Cigarettes and other tobacco products, including tobacco leaves, chewing and pipe tobacco, snuff, and cigars are prohibited, including those that are authorized in Publication 52 under PACT.

C1. Obscene and horror articles, images, prints, paintings, cards, films, videotapes, comic books, etc., are prohibited.

C2. E-cigarettes and related products (e.g., nicotine liquids, e-liquids, parts, or supplies) are prohibited.

D. Coffee is prohibited.

E. Medicines (prescription, over-the-counter, vitamins, and supplements) are prohibited when mailed to individuals for human or animal use. This prohibition does not apply when medicines are sent as Official Mail only between specifically designated agencies such as pharmaceutical distributors, hospitals, clinics, and pharmacies.

E1. Mailers are responsible to ensure that all medicines and vaccines conform to host nation laws.

E2. Any matter depicting nude or seminude persons, pornographic, or sexual items are prohibited. Non-authorized political materials are prohibited. Religious materials contrary to the Islamic faith are prohibited in bulk quantities, but individual items for the personal use of the addressee are permissible.

E3. Radio transceivers, cordless/cellular telephones, global positioning systems, scanners, base stations, and handheld transmitters are prohibited.

F. Firearms of any type are prohibited, except firearms mailed to or by official U.S. government agencies. This restriction does not apply to firearms mailed from this MPO ZIP Code, provided ATF and USPS regulations are met. Antique firearms do not require an ATF form.

F1. Weapons of any type are prohibited.

F2. Mailing firearms to or from this MPO ZIP Code is restricted to one shotgun and one single shot .22 caliber rifle per individual.

F3. Replica weapons and inert explosive devices (such as grenades) and weapons parts are prohibited.

G. Parcels of any class are prohibited.

H. Meats, including preserved meats, bones, skin, hair, feathers, horns or hoofs of hoofed animals, and wool samples whether hermetically sealed or not, are prohibited.

H1. Pork or pork by-products are prohibited.

I. Reserved for future use.

I1. Reserved for future use.

I2. Reserved for future use.

I3. Mail of all classes must fit in a mail sack. Mail may not exceed the following dimensions:

- Maximum length 27 inches.
- Maximum width 14 inches.
- Maximum height 14 inches.

J. Standard Post and Parcel Select parcels may not exceed 108 inches in length and girth combined.

K. Reserved for future use.

L. All Official Mail is prohibited.

M. Fruits, vegetables, live animals, and live plants are prohibited.

N. Registered Mail service is prohibited.

O. Reserved for future use.

P. Official Mail only.

Q. Mail may not exceed 66 pounds, and size is limited to 42 inches maximum length and 72 inches maximum length and girth combined.

R. All alcoholic beverages, including those mailable under Publication 52, Part 421, are prohibited.

R1. Materials used in the production of alcoholic beverages (i.e., distilling material, hops, malts, yeast, etc.) are prohibited.

S. Synthetic cannabinoids used to stimulate the central nervous system commonly known as "synthetic marijuana," "K2," or "Spice" are prohibited.

T. Mailings of household shipments and case lots of food to or from an MPO require military transportation office approval prior to mailing. Mailings to or from a DPO require pre-approval from the Diplomatic Pouch and Mail Director.

U. Mail addressed to Retirees (Box R) is limited to 16 ounces and up to a 90-day supply of TRICARE medications. This restriction does not apply to mail endorsed "Free Matter for the Blind or Handicapped."

U1. Mail is limited to First-Class Mail items, including audio and video media, weighing 13 ounces or less. This limitation does not apply to Official Mail.

U2. Retirees (Box R) are not authorized mail service.

U3. Reserved for future use.

U4. Mail addressed to Box C is limited to 2 lbs.

V. PMEMS is not available.

V1. Electronic Delivery status information for Extra Services is not available on *USPS.com*. Manual record of delivery may be available upon request.

W. Hermetically sealed packages of meat products bearing USDA certification, such as dried beef, salami, and sausage, may be mailed. 200 grams of tobacco per parcel are permitted duty free.

X. Cremated remains are prohibited.

Y. Mail is limited to First-Class Mail and Priority Mail items only. This restriction also applies to Official Mail.

Z. No outside pieces (OSPs).

Z1. The following restriction is applicable only to International Service Centers (ISC)/Exchange Offices. An Anti-Pilferage Seal (Item No O817E or O818A) is required on all pouches and sacks.

Freely Associated States Restrictions

We list the mailing restrictions for Freely Associated States (FAS) in the Pull-Out section of the *Postal Bulletin*. All FAS Restrictions will be updated periodically.

Freely Associated States

Mail addressed to freely associated states is subject to certain conditions or restrictions of mailing regarding content, preparation, and handling. The following FAS Restrictions table outlines these conditions as listed by each affected FAS ZIP Code™ through the use of footnoted mailing restrictions codes (see the [Restrictions](#) following the table). For more information on available extra services for FAS destinations, see *Mailing Standards of the United States Postal Service, Domestic Mail Manual (DMM®)*, part 503.

Acceptance clerks must use the table with the Retail System Software terminal to determine which FAS ZIP Codes are active and which conditions of mailing apply.

FAS Restrictions Table

FAS Table	See Restrictions
96939	A, B
96940	A, B
96941	A, B
96942	A, B
96943	A, B
96944	A, B
96960	A, B
96970	A, B, D
Marshall Islands	C
Federated States of Micronesia	C

RESTRICTIONS LEGEND

PS Form 2976, *Customs Declaration CN 22 – Sender's Declaration*

PS Form 2976-A, *Customs Declaration and Dispatch Note*

FAS = Freely Associated State

- A.** Bank currency (coin and paper) is prohibited.
- B.** Signature Confirmation, Signature Confirmation Restricted Delivery, Adult Signature Requested, Adult Signature Restricted Delivery, Certified Mail Adult Signature Required, and Certified Mail Adult Signature Restricted Delivery not available.
- C.** Collect on Delivery is prohibited.
- D.** Betel nut (Areca catechu) is prohibited.

— *Asia-Pacific Relations,
Global Business, 9-7-23*

Publication 52 Revision (continued)

USPS Packaging Instruction 6C

Category B Infectious Substances

* * * * *

Required Authorization

[Revise the second sentence of the first paragraph of the text to read as follows:]

The shipper has the responsibility to ensure awareness of, and compliance with, all other applicable requirements and regulations for mailing these materials. The shipper must be able to provide evidence of compliance before submitting a written request to the director of Product Classification, Postal Service Headquarters (see part 214 for address).

* * * * *

Mailability

* * * * *

[Revise the fourth secondary bullet under the first main bullet "International Mail: Mailable only when:" to read as follows:]

- The director, Product Classification, has granted written approval.

* * * * *

[Revise the second secondary bullet under the second main bullet "Domestic Mail: Mailable only when:" to read as follows:]

- Division 6.2 materials meet the preparation requirements for air transportation and are sent via Priority Mail Express or Priority Mail.

* * * * *

USPS Packaging Instruction 6D

Sharps Waste and Other Regulated Medical Waste

* * * * *

Required Authorization

[Revise the last sentence of the text to read as follows:]

***The vendor in whose name the authorization is being sought must submit a written request to the director of Product Classification, Postal Service Headquarters (see 214 for address).

Mailability

* * * * *

[Revise the text of the second bullet to read as follows:]

Domestic Mail: Permitted only using USPS Returns Service via Priority Mail Return Service option.

* * * * *

Marking

* * * * *

[Revise the text of the third bullet to read as follows:]

- The outer shipping container must bear a properly prepared USPS Returns Service label. The USPS Returns Service permit must be held in the same name as that of the authorized medical waste vendor.

* * * * *

USPS Packaging Instruction 6F

Forensic Material

* * * * *

Mailability

* * * * *

[Revise the fourth secondary bullet under the first main bullet "International Mail: Mailable only when:" to read as follows:]

- The director, Product Classification, has granted written approval.

* * * * *

[Revise the second secondary bullet under the second main bullet "Domestic Mail: Mailable only when:" to read as follows:]

- Division 6.2 materials meet the preparation requirements for air transportation and are sent via Priority Mail Express or Priority Mail.

* * * * *

USPS Packaging Instruction 10A

[Revise the title and introductory paragraph of the section "Small Quantity Provision" to read as follows:]

Small-Quantity Provision

Some types of hazardous materials, as permitted in 338 and 49 CFR 173.4, may be prepared for mailing using the "small-quantity" provision. The small-quantity provision is unique within the United States, and its use is prohibited in international and APO/FPO/DPO mail.

* * * * *

Required Packaging

Inner Receptacle

[Add two new bullets at the beginning of the section to read as follows:]

- Each inner receptacle is limited to 30 milliliters or 1 ounce or less for liquids.
- Each inner receptacle is limited to 30 grams or 1 ounce or less for solids.

* * * * *

Appendix D

Hazardous Materials Definitions

[Revise the definition for "Air transportation" to read as follows:]

Air transportation requirements apply to all mailable hazardous materials sent at Priority Mail Express or Priority Mail prices for domestic shipments, or Priority Mail Express International, Priority Mail International, and First-Class Package International Service prices for international shipments. All mailable hazardous materials sent at those prices must meet the requirements that apply to air transportation. Mailable hazardous materials sent at any of those prices may or may not be transported via air depending on the distance between the point of origination and the point of destination, and the ability of USPS to obtain an air carrier between those points.

* * * * *

[Revise the definition for "Surface transportation" to read as follows:]

Surface transportation requirements apply to all mailable hazardous materials sent at the Parcel Select Lightweight or USPS Ground Advantage prices must meet the requirements that apply to surface transportation.

* * * * *

Index

* * * * *

A

* * * * *

[Revise entry "Aerosols" to read as follows:]

Aerosols, 342.23

* * * * *

B

* * * * *

[Revise entry "Biological products, aerosol" to read as follows:]

Biological products, aerosol, 342.23

* * * * *

[Revise entry "Butane" to read as follows:]

Butane, 342.23

C

* * * * *

[Revise entry "Carbonated beverages" to read as follows:]

Carbonated beverages, 342.23

* * * * *

E

* * * * *

[Revise entry "Electronic tubes" to read as follows:]

Electronic tubes, 342.23

* * * * *

F

* * * * *

[Revise entry "Fire alarm systems, audible" to read as follows:]

Fire alarm systems, audible, 342.23

* * * * *

[Revise entry "Fire extinguishers" to read as follows:]

Fire extinguishers, 342.22, 342.23

* * * * *

[Revise entry "Foodstuffs, aerosol products" to read as follows:]

Foodstuffs, aerosol products, 342.23

* * * * *

G

* * * * *

Gases, 342

[Revise entry "Empty containers" under entry "Gases, 342" to read as follows:]

Empty containers, 342.23

* * * * *

[Revise entry "Mailable gases" under entry "Gases, 342" to read as follows:]

Mailable gases, 342.23

* * * * *

[Revise entry “Nonmailable gases” under entry “Gases, 342” to read as follows:]

Nonmailable gases, 342.22

* * * * *

[Revise entry “Toxic*” under entry “Gases, 342” to read as follows:]

Toxic*, 342.22

* * * * *

L

* * * * *

[Revise entry “Lighters” to read as follows:]

Lighters, 342.22, 343.25

* * * * *

M

[Revise entry “Medical preparations (aerosol)” to read as follows:]

Medical preparations (aerosol), 342.23

* * * * *

O

* * * * *

Oxygen

[Revise the two entries under entry “Oxygen” to read as follows:]

Compressed, 342.23

Refrigerated liquid*, 342.22

* * * * *

P

* * * * *

[Revise entry “Paint products” to read as follows:]

Paint products, aerosol, 342.23

* * * * *

[Revise entry “Propane” to read as follows:]

Propane, 342.23

* * * * *

The Postal Service will incorporate these revisions into the next edition of Publication 52, which is available via Postal Explorer® at pe.usps.com.

— Product Classification,
Product Solutions, 9-7-23

Publication 431 Revision: Changes to Post Office Box Service and Caller Service Fee Groups

Effective September 7, 2023, Publication 431, *Post Office Box Service and Caller Service Fee Groups*, is revised to include the following changes.

Publication 431, Post Office Box Service and Caller Service Fee Groups

* * * * *

[Add the following entries:]

ZIP Code	Fee Group
33991	34

* * * * *

[Delete the following entries:]

ZIP Code	Fee Group
54159	5
54826	5

* * * * *

The online version of Publication 431 is dated July 2013. Publication 431 is currently available on the Postal Service™ PolicyNet website (blue.usps.gov/cpim):

- Go to blue.usps.gov.
- In the left-hand column, click *Essential Links*, and then click *PolicyNet*.
- Go to the right-hand side under “Published Forms and Directives.”
- Click *Publications*.

Offices with WebBATS Manager/Supervisor access can view current Publication 431 information by going to the WebBATS Edit Facility Information page, as follows:

1. Go to the WebBATS main menu, and select Utility> Facility>Edit Facility option.
2. View the Fee Group field on the Edit Facility Information page.

— Post Office Operations,
Retail and Post Office Operations, 9-7-23

Organization Information

Finance

Fiscal Year 2023 Closing Guidance: Message from the Vice President, Controller

Thank you for all of your efforts to control expenses during fiscal year (FY) 2023 and provide timely updates on your expenses so that we maintain complete and accurate financial statements. It is important that we carry this effort through to the end of the fiscal year by controlling discretionary activity. This does not mean curtailing business, but it does mean making prudent choices by deferring or eliminating noncritical activity by purchasing goods or services throughout the fiscal year rather than at the end of it simply because budgeted funds are available. Please encourage your contractors to bill us in a timely manner for goods received and services rendered, or inform us of any billing delays so we can recognize the expense before the end of the fiscal year.

The following instructions will assist you, when appropriate, in helping the Postal Service™ close its financial books in a timely and efficient manner so that we meet our mandate with the Postal Regulatory Commission.

Cara M. Greene
Vice President, Controller

I. Instructions for FY 2023 Closing

We request that all organizations limit their expense and capital expenditures, particularly for Postal Service support equipment, to essential needs. Accordingly, all vice presidents should review discretionary spending to ensure the Postal Service attains its financial target for this fiscal year.

The instruction and reporting dates in this *Postal Bulletin* supplement procedures followed during the normal monthly or quarterly reporting schedule.

II. Fiscal Year

The Postal Service prepares its annual reports on a government FY basis, which comprises 365 days (366 in leap years), always ending on September 30.

III. End of Year Processing Activities and Timelines, Requisitions, and Contract Actions

To ensure timely processing, submit purchase requests, expense and capital requisitions, requests for contract awards, and contract modifications for FY 2023 to Supply Management for processing by the following dates.

Requisitions for Contract Actions (Other than IT and Telecom)

For FY 2023, submit expense requisitions and requests for contract actions to Supply Management before August 31, 2023. Any requests received after this date may not be processed for award and delivery by September 30.

Requisitions for Contract Actions (Capital Purchases)

For FY 2023, submit capital requisitions and requests for contract actions to Supply Management on or before September 6, 2023. Any requests received after this date may not be processed for award by September 30.

Urgency and Prioritization of Peak Season Purchases

In anticipation of peak season needs, submit requisitions with proper supporting documentation in a timely manner to avoid delays. Supplies and equipment used in the prior year's peak season and likely to be used again in the coming peak season must be adequately inventoried and stocked well ahead of time.

Requisitions for FY 2024 Contract Actions

For FY 2024, submit expense and capital requisition requests for contract actions that require a start date before October 1, 2023, to Supply Management by August 31, 2023. Any requests received after this date may not be processed for award by the required start date.

FY Processing of Funds

The St. Louis Accounting Service Center (ASC) and the St. Louis ASC Satellite Office based in San Mateo (formerly known as the San Mateo ASC) will process against the appropriate fiscal year funds based on contract or modification issuance in accordance with the table shown here. Your actual expense may vary as we are required to record our expenses in the month in which the expense is incurred in accordance with U.S. Generally Accepted Accounting Principles (US GAAP). Processing performed by the St. Louis ASC Satellite Office is adjusted through the accrual process further explained in the table.

Types of contracts or modifications	Issue Date	For requisitions received	Funds will be processed against
All contracts or modifications other than IT and telecom	Issued by September 30, 2023	On or before August 31, 2023	FY 2023 funds
Capital purchases		On or before September 6, 2023	FY 2023 funds

Types of contracts or modifications	Issue Date	For requisitions received	Funds will be processed against
All contracts or modifications	Issued after September 30, 2023	On or after September 1, 2023 (Expense) and September 6, 2023 (Capital)	FY 2024 funds

Transmit electronic files to Accounting Services as follows:

Send electronic files for...	To...	No later than...
Contract Authoring and Management System	St. Louis ASC Satellite Office	September 30, 2023
Facilities capital commitments and expense payments	St. Louis ASC	September 30, 2023

IV. Payments and Accruals for Year-End Closing FY 2023

Payments

Submit appropriate receiving reports or certified invoices for goods and services (received by September 30) to the St. Louis ASC Satellite Office no later than October 1, 2023.

1. Expedite processing of receiving reports and certified invoices, as these documents are used to charge expense to the proper FY.
2. Additionally, review contracts to ensure sufficient funds are available by August 31, 2023, to process invoices.

3. Supply Management will process all requisitions for the issuance of contracts against FY 2023 funds according to the following priorities:

- Priority 1 – Capital commitment requisitions.
- Priority 2 – Expense commitment requisitions.

Accruals

We will process monthly accruals for Headquarters (HQ) expense as normal and as communicated to the Executive Leadership Team (ELT) and their budget coordinators.

Note: Any unusual or non-recurring expense must be communicated to the ELT budget coordinators as a possible adjustment to the normal ELT accrual.

1. All HQ accruals will occur at the ELT or VP Finance level.
2. Certified invoices for goods and services received by September 30 must be received by the St. Louis ASC Satellite Office no later than September 30. All invoices not received by the St. Louis ASC Satellite Office by October 1, 2023, will be processed in October 2023 and charged in FY 2024.
3. If goods or services have been received as of September 30, 2023, but the vendor invoice has not been received, approved, and submitted to the St. Louis ASC and the St. Louis ASC Satellite Office for payment, these expenses will need to be accrued. Please contact your respective Budget Coordinator to complete the accrual. This process ensures we record our expenses in the right month and remain compliant with US GAAP.

V. Forms and Other Required Submissions Schedule (Appendix)

The table shown here describes the schedule for submitting forms and other required submissions for FY 2023 Year-End Closing.

Form #	Item	Submit by	Submit to	Received by Date
PS Form 1839	Payment Record for Carrier Drive Out Agreements	Field offices	eWS Online Forms	September 6, 2023
PS Form 1164-A	Claim for Reimbursement for Postal Supervisors (for Employee Business Expenses only)	Field offices	eWS Online Forms	September 6, 2023
PS Form 17	Stamp Requisition/ Stamp Return	Field offices	Stamp Fulfillment Services	September 6, 2023
NA	All Recognition and Incentive Awards	All offices	eAwards	September 6, 2023
PS Form 1233	Project Financial Change/Completion Report – to add site prep cost to existing assets or Construction-In-Progress (CIP)	St. Louis ASC	St. Louis ASC Satellite Office	September 14, 2023
NA	Email from accounting assistant to add inventory items to fixed assets or CIP	Topeka Material Distribution Center (MDC)	St. Louis ASC Satellite Office	September 14, 2023
NA	Government Printing Office	Supply Management (HQ)	St. Louis ASC Satellite Office	September 20, 2023
PS Form 1902	Justification for Billing Accounts Receivable (Non-Payroll)	Field offices	St. Louis ASC Satellite Office	September 20, 2023
NA	Tort claims	All offices	District Tort Claims Coordinator	September 20, 2023
NA	Project facility system	Facilities	St. Louis ASC	September 20, 2023
PS Form 2880	Physical Inventory – Adjustments (Additions/ Reinstatements)	Asset Accountability Service Center	St. Louis ASC Satellite Office	September 20, 2023

Form #	Item	Submit by	Submit to	Received by Date
NA	Hard copy paper commitment documents	Supply Management (HQ)	St. Louis ASC Satellite Office	September 20, 2023
SF 97	The U.S. Government Certificate of Release of a Motor Vehicle	Field offices	St. Louis ASC Satellite Office	September 20, 2023
NA	Vehicle hire payment certification reports	Field offices	Local Vehicle Maintenance Facility (VMF) Manager	September 20, 2023
NA	Inter-Agency Payment and Collection Certified invoices	Field offices	St. Louis ASC Satellite Office	September 20, 2023
NA	Government travel account	eTravel	St. Louis ASC	September 20, 2023
NA	eTravel (approving official)	All offices	St. Louis ASC	September 22, 2023
PS Form 2551	Non-good and Non-service Payment Authorization	All offices	eWS Online Forms	September 22, 2023
PS Form 3533	Application for Refund of Fees, Products, and Withdrawal of Customer Accounts	Field offices	eWS Online Forms	September 22, 2023
PS Form 4587	Request to Repair, Replace, or Dispose of Postal Service-Owned Vehicle	Marlene Kocken – Fleet Management	St. Louis ASC Satellite Office	September 27, 2023
PS Form 1129	Cashier Reimbursement Voucher and Accountability Report (Imprest fund)	All offices (Imprest)	St. Louis ASC Satellite Office	September 27, 2023
NA	Gasoline credit card (fleet card)	U.S. Bank	St. Louis ASC Satellite Office	September 27, 2023
PS Form 2146	Employee's Claim for Personal Property	All offices	St. Louis ASC Satellite Office	September 27, 2023
PS Form 4503	Vehicle Delivery Control Sheet	VMF	Marlene Kocken– Fleet Management	September 29, 2023
PS Form 4541	Order-Invoice for Vehicle Repair (Commercial work order)	Field offices	Local VMF Manager	September 29, 2023
NA	USPS Telecom Data invoices	Calero	St. Louis ASC Satellite Office	September 29, 2023
N/A	National Transportation Services	Supply Management (HQ)	St. Louis ASC Satellite Office	September 29, 2023
NA	eBuy+ utilities	All offices	eBuy+ Post / Certify Module	September 29, 2023
NA	Commitments through APEX-CAMS electronic interface	Supply Management (HQ)	St. Louis ASC Satellite Office	September 29, 2023
NA	Direct Vendor Delivery and eBuy+*	Topeka MDC	St. Louis ASC Satellite Office	September 29, 2023
NA	Telecommunications Expense Management	Raleigh Network Operations	St. Louis ASC Satellite Office	September 29, 2023
NA	Material Distribution Inventory Management System invoices	Topeka MDC	St. Louis ASC Satellite Office	September 29, 2023
NA	National Customer Management System invoices	Stamp Fulfillment Services	St. Louis ASC Satellite Office	September 29, 2023
NA	Program Cost Tracking System invoices (PCTS)	PCTS Systems Administrator	St. Louis ASC Satellite Office	September 29, 2023
NA	UTIL – Energy Initiatives	Energy United/ NISC	St. Louis ASC Satellite Office	September 29, 2023
NA	Solution for Enterprise Asset Management invoices	Topeka MDC	St. Louis ASC Satellite Office	September 29, 2023
NA	iSupplier invoices and contracting officer (CO)/ Contracting officer representative (COR) Invoice approvals and receipt of goods and services	All offices	St. Louis ASC Satellite Office	September 29, 2023
NA	Capital and expense receiving report	All offices	St. Louis ASC Satellite Office	October 2, 2023
NA	Certified Invoices – supplies and services, bulk fuel and oil purchases, motor vehicle parts, non-metered heating fuel	All offices	St. Louis ASC Satellite Office	October 2, 2023
NA	U.S. Bank Visa accrual	U.S. Bank	St. Louis ASC Satellite Office	September 29, 2023
NA	Relocation Management Firm accruals	Accounting (HQ)	Relocation	September 29, 2023
NA	Commercial Bank Reconciliations	JP Morgan Chase	Eagan ASC	October 12, 2023

*Do not place orders for DVD or eBuy+ purchases from September 29 through September 30, 2023, except for critical needs.

Address questions concerning these instructions to the appropriate Accounting Services Center locations or Finance office indicated in the table above.

Information Security

Think Before You Download That App

To protect the United States Postal Service® (USPS®) from rising cyberthreats, the Corporate Information Security Office (CISO) reminds you to think before downloading any apps to your mobile device. USPS has applied security measures that only allow approved business-related apps on USPS-issued mobile devices.

CISO has reviewed and scanned each app in the Infrastructure Tool Kit to ensure they are safe. Mobile apps — which can enhance productivity by making your job quick and easy — must only be downloaded from the USPS App-Store on your device.

Unapproved apps could be harmful and contain malicious software like “malware” that can pose a cybersecurity risk to USPS. If you want to use an app on your USPS-issued mobile device that is not in the USPS App catalog, send an email to the USPS Authorized Apps team at AuthorizedApplications@usps.gov (and copy your manager) with answers to these specific questions:

- What is the app’s name?
- Is the app for Apple or Android?

- What is the business-related problem or opportunity that this app helps solve?
- How does the app enhance the business functionality of your department within USPS?

The USPS Authorized Apps team will determine if the requested app should be added to the USPS App catalog based on the answers submitted along with a technical scan of the app for privacy and security risks.

For general questions regarding mobile app security, send an email to the USPS Authorized Apps team at AuthorizedApplications@usps.gov. The Acceptable Use Policy is also a good reference to explain USPS-associated protocols for mobile device use.

For more information about cybersecurity, visit blue.usps.gov/cyber or liteblue.usps.gov/cyber, as well as the Monthly Awareness Campaigns page at blue.usps.gov/cyber/communications.htm.

— Corporate Information Security Office,
Chief Information Security Officer, 9-7-23

Mailing and Shipping Services

First-Class Mail and USPS Marketing Mail Growth Incentives

On August 11, 2023, the United States Postal Service® (USPS®) filed with the Postal Regulatory Commission a notice of market dominant price change creating two new incentives. As indicated in the filing, the Postal Service™ will offer two new year-long incentives designed to promote the growth of First-Class Mail® (the “First-Class Mail Growth Incentive”) and USPS Marketing Mail® (the “Marketing Mail Growth Incentive”).

The effective date of each incentive is January 1, 2024, and the incentive period runs through December 31, 2024. Qualifying Market Dominant products eligible for the incentive are:

First-Class Mail Growth Incentive

- First-Class Mail Presort Letters.
- First-Class Mail Presort Cards.
- First-Class Mail Presort Flats.

Marketing Mail Growth Incentive

- USPS Marketing Mail Letters and High Density/Saturation Letters.
- USPS Marketing Mail Flats and High Density/Saturation Flats.
- USPS Marketing Mail Carrier Route Letters and Flats.
- USPS Marketing Mail and Saturation Parcels.

Documents pertinent to this notice are available at prc.gov under docket number R2023–3 and on the daily docket for August 11, 2023.

Each Mail Growth Incentive will issue 30 percent postage credits on qualifying CY 2024 volumes that exceed the greater of:

- Corresponding FY 2023 volumes; and
- One million pieces in CY 2024.

Mail owners with fewer than one million pieces in FY 2023 but exceeding one million pieces in CY 2024 will have their incremental volume start at one million pieces, not their FY 2023 volume. Among the requirements to be eligible to claim the postage credits in each of these incentives, a mail owner must:

- Register for the incentive via steps to be announced;
- Mail at least one million qualifying pieces in CY 2024; and
- Mail more qualifying pieces in CY 2024 than they mailed in FY 2023.

Mail owners can participate in either or both Mail Growth Incentives, but the incentives cannot be combined for the purposes of reaching the million-piece minimums or for any other purpose.

USPS will begin registration November 2023, if approved. As part of the registration process, mailers must agree to their baseline volume and meet all eligibility requirements in order to receive postage credits.

Postage credits will be issued to qualified mail owners after 6 months, 9 months, and 12 months from the start of CY 2024. Credits can only be used for future Marketing Mail if earned in the Marketing Mail Growth Incentive and for First-Class Mail if earned in the First-Class Mail Growth Incentive. Credits can be used after they are issued and will expire at the end of CY 2025.

Current information on the requirements to participate in the First-Class Mail and Marketing Mail Growth Incentives, including FAQs, have been posted at postalpro.usps.com/growth-incentive-faqs and will be regularly updated.

— Mailing Services,
Product Solutions, 9-7-23

Stamp Services

Stamp Announcement 23-32: Winter Woodland Animals Stamps



© 2022 USPS

On October 10, 2023, in Woodland, MI, the United States Postal Service® will issue the *Winter Woodland Animals* stamps (Forever® priced at the First-Class Mail® rate), in four designs, in a pressure-sensitive adhesive (PSA) double-sided booklet of 20 stamps (Item 684600). These stamps will go on sale October 10, 2023, and must not be sold or canceled before the first-day-of-issue.

Winter Woodland Animals stamps celebrate four beloved animals in settings befitting the season. Each stamp features a whimsical, graphic image of one of four different woodland animals: a deer, fox, rabbit, and owl. The animals appear with details of their habitat in winter, such as a full or crescent moon, snow-covered trees, holly branches with berries, and delicate snowflakes. Art director Antonio Alcalá designed the stamps with Katie Kirk, who illustrated the stamps.

Availability to Post Offices: Item 684600, Winter Woodland Animals (Forever Priced at the First-Class Mail Rate) Double-sided Booklet of 20 Stamps

Stamp Fulfillment Services will not make an automatic push distribution to Post Offices. Post Offices may begin ordering stamps before the first-day-of-issue through SFS Web at sfsweb.usps.gov/sfsweb.

How to Order the First-Day-of-Issue Postmark

Customers have 120 days to obtain the first-day-of-issue postmark by mail. They may purchase new stamps at their local Post Office™ or at The Postal Store® website at store.usps.com/store/home. They must affix the stamps to envelopes of their choice, address the envelopes (to themselves or others), and place them in a larger envelope addressed to:

FDOI – Winter Woodland Animals Stamps
 USPS Stamp Fulfillment Services
 8300 NE Underground Drive, Suite 300
 Kansas City, MO 64144-9900

After applying the first-day-of-issue postmark, the Postal Service™ will return the envelopes through the mail. There is no charge for the postmark up to a quantity of 50. There is a 5-cent charge for each additional postmark over 50. All orders must be postmarked by February 10, 2024.

How to Order First-Day Covers

The Postal Service also offers first-day covers for new stamp issues and Postal Service stationery items postmarked with the official first-day-of-issue cancellation. Each item has an individual catalog number and is offered in the *USA Philatelic* catalog and online at store.usps.com/store/home. Customers may register to receive a free *USA Philatelic* catalog online at usps.com/philatelic.

Locally produced items are not authorized. Only merchandise that has been approved and assigned an item number by Headquarters Retail Marketing may be produced and sold.

Issue:	<i>Winter Woodland Animals Stamps</i>
Item Number:	684600
Denomination & Type of Issue:	First-Class Mail Forever
Format:	Double-sided Booklet of 20 (4 designs)
Series:	N/A
Issue Date & City:	October 10, 2023, Woodland, MI 48897
Designer:	Antonio Alcalá, Alexandria, VA
Designer:	Katie Kirk, Minneapolis, MN
Art Director:	Antonio Alcalá, Alexandria, VA
Illustrator:	Katie Kirk, Minneapolis, MN
Modeler:	Sandra Lane / Michelle Finn
Manufacturing Process:	Offset
Printer:	Banknote Corporation of America
Press Type:	Alprinta 74
Stamps per Booklet:	20
Print Quantity:	290,000,000 stamps
Paper Type:	Phosphor Tagged Paper, Block
Adhesive Type:	Pressure-sensitive
Colors:	Cyan, Magenta, Yellow, Black, Custom Blue
Stamp Orientation:	Vertical
Image Area (w x h):	0.770 x 1.050 in. / 19.558 x 26.670 mm
Stamp Size (w x h):	0.910 x 1.190 in. / 23.114 x 30.226 mm
Booklet Size (w x h):	5.743 x 2.375 in. / 145.872 x 60.325 mm
Plate Size:	800 stamps per revolution
Plate Numbers:	"B" followed by five (5) single digits
Marginal Markings:	Header: "Winter Woodland Animals" 20 First-Class Forever Stamps • © 2022 USPS in peel strip area • Barcode • USPS logo • Promotional text • Plate number in peel strip area

— *Stamp Services,
Marketing, 9-7-23*

Update: Stamp Announcement 23-29: Snow Globes Stamps

The article titled "Stamp Announcement 23-29: Snow Globes Stamps," in *Postal Bulletin 22630*, (8-10-22, pages 32–33), is updated to include that Stamp Fulfillment Services will complete an automatic distribution shipment of the *Snow Globes* stamps to a select number of offices.

Please check SFS Web at sfsweb.usps.gov/sfsweb to see if you have an order in progress.

— *Stamp Services,
Marketing, 9-7-23*

Pictorial Postmarks Announcement

As a community service, the Postal Service™ offers pictorial postmarks to commemorate local events celebrated in communities throughout the nation. A list of events for which pictorial postmarks are authorized appears on the following pages. The sponsor of the pictorial postmark appears in italics under the date. Also provided are illustrations of these postmarks.

People attending these local events may obtain the postmark in person at the temporary Post Office™ station established there. Those who cannot attend the event but who wish to obtain the postmark may submit a mail order request. Pictorial postmarks are available only for the dates indicated, and *requests must be postmarked no later than 30 days following the requested pictorial postmark date.*

All requests must include a stamped envelope or postcard bearing at least the minimum First-Class Mail® postage. Items submitted for postmark may not include

postage issued after the date of the requested postmark. Such items will be returned unserved.

Customers wishing to obtain a postmark must affix stamps to any envelope or postcard of their choice, address the envelope or postcard to themselves or others, insert a card of postcard thickness in envelopes for sturdiness, and tuck in the flap. Place the envelope or postcard in a larger envelope and address it to: Pictorial Postmarks, followed by the Name of the Station, Address, City, State, ZIP+4® Code, as listed next to the postmark.

Customers can also send stamped envelopes and postcards without addresses for postmark, as long as they supply a larger envelope with adequate postage and their return address. After applying the pictorial postmark, the Postal Service returns the items (with or without addresses) under addressed protective cover.



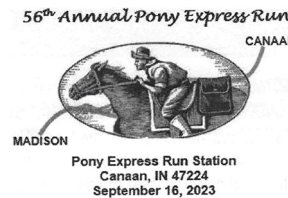
September 8–10, 2023
Homestead Festival Committee
 Homestead Festival Station
 Postmaster
 326 South Main Street,
 PO Box 9998
 Princeton, IL 61356-9998



September 16, 2023
Tuscora Stamp Club
 TUSCOPEX Station
 Postmaster
 210 North Broadway Street
 New Philadelphia, OH
 44663-9998



September 9, 2023
United States Postal Service
 Eastham Windmill Weekend
 Station
 Postmaster
 2365 State Highway
 Eastham, MA 02642



September 16, 2023
United States Postal Service
 Pony Express Run Station
 Postmaster
 8988 North Main Street
 Canaan, IN 47224



September 9, 2023
Big Lick Stamp Club
 ROAPEX Station
 Postmaster
 119 South Pollard Street
 Vinton, VA 24179



September 16, 2023
White Covered Bridge Association
 White Bridge Station
 Postmaster
 PO Box 9998
 Garards Fort, PA 15334

— Stamp Services,
 Marketing, 9-7-23

How to Order the First-Day-of-Issue Digital Color or Traditional Postmarks

Customers have 120 days to obtain the first-day-of-issue postmarks by mail. Each cover must have sufficient postage to meet First-Class Mail® requirements. Customers may purchase new stamps at their local Post Office™, by phone at 844-737-7826, or on The Postal Store® website at usps.com/shop.

Digital Color Postmarks

Only select stamp issues offer a digital color postmark. Customers may submit #6 or #10 envelopes constructed of paper rated as “laser safe.” The Postal Service™ recommends envelopes of 80-pound Accent Opaque, acid-free, 9/16-inch side seams with no glue on the flap. The maximum size of all digital color postmarks is 2 inches (vertically) by 4 inches (horizontally). Allow sufficient space on the envelope to accommodate the postmark. Do not use self-adhesive labels for addresses on the envelope. Two test envelopes must be included. There is a minimum of 10 envelopes at 50 cents per postmark required at the time of servicing. Customers must submit a check, money order, or credit card for payment.

The Postal Service reserves the right to not accept hand-painted and other cachet envelopes that are not compatible with our digital color postmark equipment. The Postal Service also reserves the right to substitute traditional black rubber postmarks if use of nonspecified envelopes results in poor image quality or damage to equipment.

Customers must affix the stamps to the envelopes and address them to themselves or others for return through the mail. Or, they may include an additional self-addressed return envelope, large enough to accommodate their can-

celed items, with sufficient postage affixed for return of their postmarked items. Address customer requests for digital color postmarks to:

FDOI – (Name of Stamp Issue)
USPS Stamp Fulfillment Services
8300 NE Underground Drive, Suite 300
Kansas City, MO 64144-9900

After applying the first-day-of-issue postmark, the Postal Service will return the envelopes to the customer by U.S. Mail®.

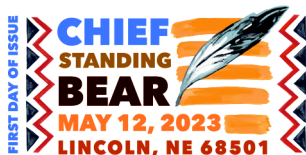
Traditional Postmarks

Customers must affix the stamps to the envelopes and address them to themselves or others for return through the mail. Or, they may include an additional self-addressed return envelope, large enough to accommodate their canceled items, with sufficient postage affixed for return of their postmarked items. Address customer requests for traditional postmarks to:

FDOI – (Name of Stamp Issue)
USPS Stamp Fulfillment Services
8300 NE Underground Drive, Suite 300
Kansas City, MO 64144-9900

After applying the first-day-of-issue postmark, the Postal Service will return the envelopes to the customer by U.S. Mail. There is no charge for the first 50 postmarks. There is a 5-cent charge for each additional postmark over 50. Customers must submit a check, money order, or credit card for payment.

Locally produced items are not authorized. Only merchandise that has been approved and assigned an item number by Headquarters Retail Marketing may be produced and sold.



Digital Color Pictorial

FDOI – Chief Standing Bear Stamp

USPS Stamp Fulfillment Services
8300 NE Underground Drive, Suite 300
Kansas City, MO 64144-9900

September 12, 2023



Black and White Pictorial

FDOI – Chief Standing Bear Stamp

USPS Stamp Fulfillment Services
8300 NE Underground Drive, Suite 300
Kansas City, MO 64144-9900

September 12, 2023



Digital Color Pictorial

FDOI – Endangered Species Stamps

USPS Stamp Fulfillment Services
8300 NE Underground Drive, Suite 300
Kansas City, MO 64144-9900

September 19, 2023



FDI – Endangered Species Stamps
 USPS Stamp Fulfillment Services
 8300 NE Underground Drive, Suite 300
 Kansas City, MO 64144-9900

September 19, 2023

Black and White Pictorial



FDI – Waterfalls Stamps
 USPS Stamp Fulfillment Services
 8300 NE Underground Drive, Suite 300
 Kansas City, MO 64144-9900

October 13, 2023

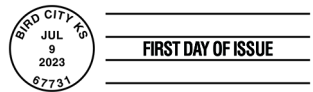
Digital Color Pictorial



FDI – Waterfalls Stamps
 USPS Stamp Fulfillment Services
 8300 NE Underground Drive, Suite 300
 Kansas City, MO 64144-9900

October 13, 2023

Black and White Pictorial



FDI – Northern Cardinal Stamped Envelope
 USPS Stamp Fulfillment Services
 8300 NE Underground Drive, Suite 300
 Kansas City, MO 64144-9900

November 9, 2023

Black and White Pictorial



FDI – John Lewis Stamp
 USPS Stamp Fulfillment Services
 8300 NE Underground Drive, Suite 300
 Kansas City, MO 64144-9900

November 21, 2023

Digital Color Pictorial



FDI – John Lewis Stamp
 USPS Stamp Fulfillment Services
 8300 NE Underground Drive, Suite 300
 Kansas City, MO 64144-9900

November 21, 2023

Black and White Pictorial



FDI – Life Magnified Stamps
 USPS Stamp Fulfillment Services
 8300 NE Underground Drive, Suite 300
 Kansas City, MO 64144-9900

December 10, 2023

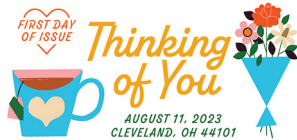
Digital Color Pictorial



FDOI – Life Magnified Stamps
USPS Stamp Fulfillment Services
8300 NE Underground Drive, Suite 300
Kansas City, MO 64144-9900

December 10, 2023

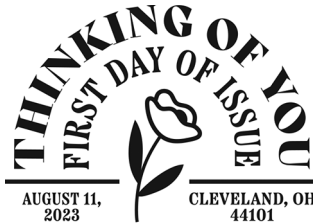
Black and White Pictorial



FDOI – Thinking of You Stamps
USPS Stamp Fulfillment Services
8300 NE Underground Drive, Suite 300
Kansas City, MO 64144-9900

December 11, 2023

Digital Color Pictorial



FDOI – Thinking of You Stamps
USPS Stamp Fulfillment Services
8300 NE Underground Drive, Suite 300
Kansas City, MO 64144-9900

December 11, 2023

Black and White Pictorial



FDOI – Bridges Stamps
USPS Stamp Fulfillment Services
8300 NE Underground Drive, Suite 300
Kansas City, MO 64144-9900

December 24, 2023

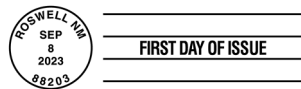
Black and White Pictorial



FDOI – Piñatas! Stamps
USPS Stamp Fulfillment Services
8300 NE Underground Drive, Suite 300
Kansas City, MO 64144-9900

January 8, 2024

Digital Color Pictorial



FDOI – Piñatas! Stamps
USPS Stamp Fulfillment Services
8300 NE Underground Drive, Suite 300
Kansas City, MO 64144-9900

January 8, 2024

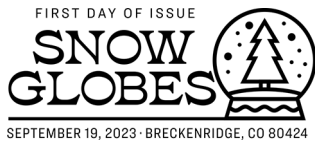
Black and White Pictorial



FDOI – Snow Globes Stamps
USPS Stamp Fulfillment Services
8300 NE Underground Drive, Suite 300
Kansas City, MO 64144-9900

January 19, 2024

Digital Color Pictorial



FDOI – Snow Globes Stamps
 USPS Stamp Fulfillment Services
 8300 NE Underground Drive, Suite 300
 Kansas City, MO 64144-9900

January 19, 2024

Black and White Pictorial



FDOI – OSIRIS-REX Stamp
 USPS Stamp Fulfillment Services
 8300 NE Underground Drive, Suite 300
 Kansas City, MO 64144-9900

January 22, 2024

Digital Color Pictorial



FDOI – OSIRIS-REX Stamp
 USPS Stamp Fulfillment Services
 8300 NE Underground Drive, Suite 300
 Kansas City, MO 64144-9900

January 22, 2024

Black and White Pictorial



FDOI – Ruth Bader Ginsburg Stamp
 USPS Stamp Fulfillment Services
 8300 NE Underground Drive, Suite 300
 Kansas City, MO 64144-9900

February 2, 2024

Digital Color Pictorial



FDOI – Ruth Bader Ginsburg Stamp
 USPS Stamp Fulfillment Services
 8300 NE Underground Drive, Suite 300
 Kansas City, MO 64144-9900

February 2, 2024

Black and White Pictorial



FDOI – Winter Woodland Animals Stamps
 USPS Stamp Fulfillment Services
 8300 NE Underground Drive, Suite 300
 Kansas City, MO 64144-9900

February 10, 2024

Digital Color Pictorial



FDOI – Winter Woodland Animals Stamps
 USPS Stamp Fulfillment Services
 8300 NE Underground Drive, Suite 300
 Kansas City, MO 64144-9900

February 10, 2024

Black and White Pictorial

Brighten Someone's Day with
Thinking of You
Forever® Stamps and Personal Message Stickers



ON SALE NATIONWIDE: AUGUST 11, 2023